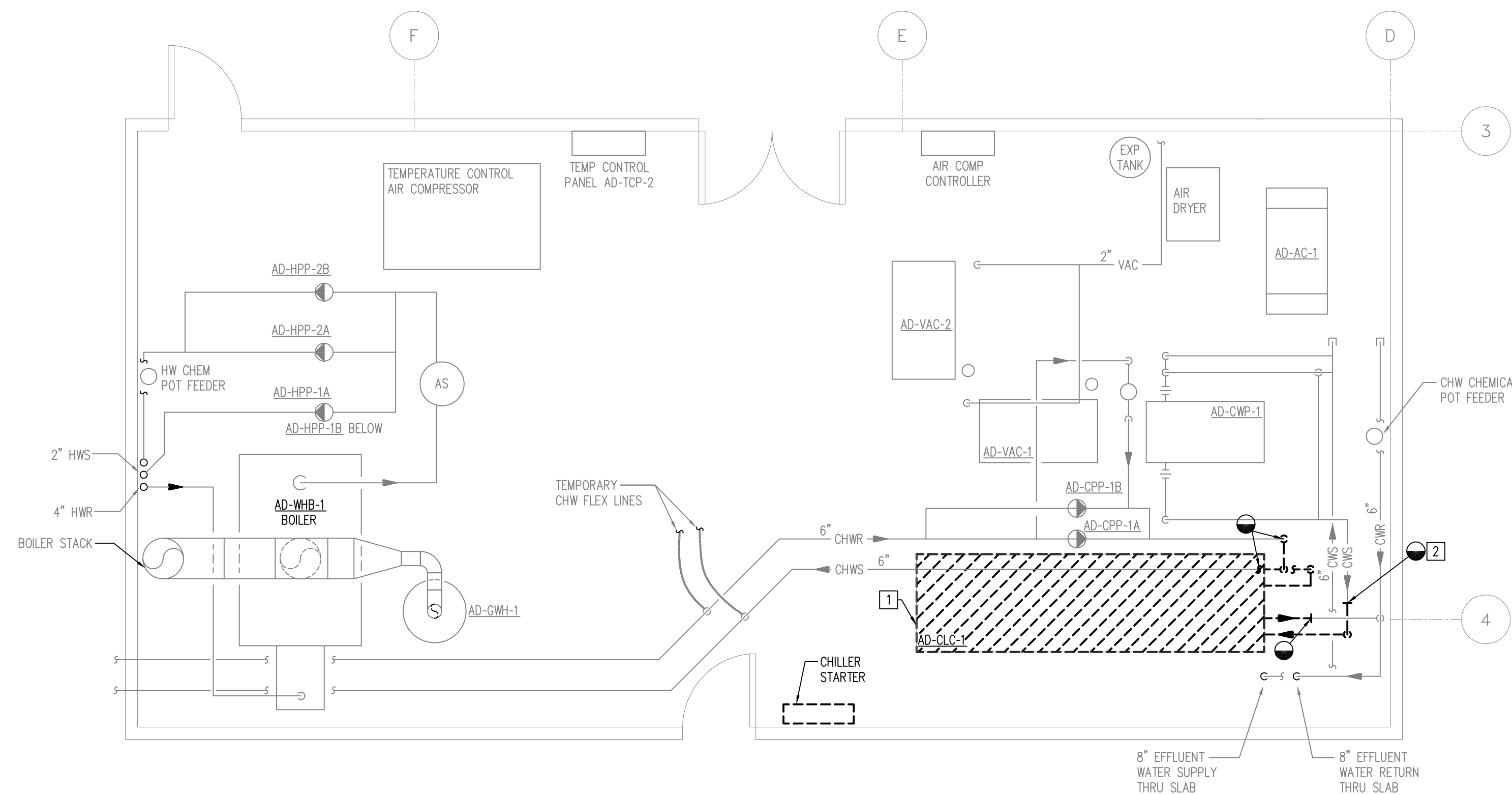


SHEET NOTES

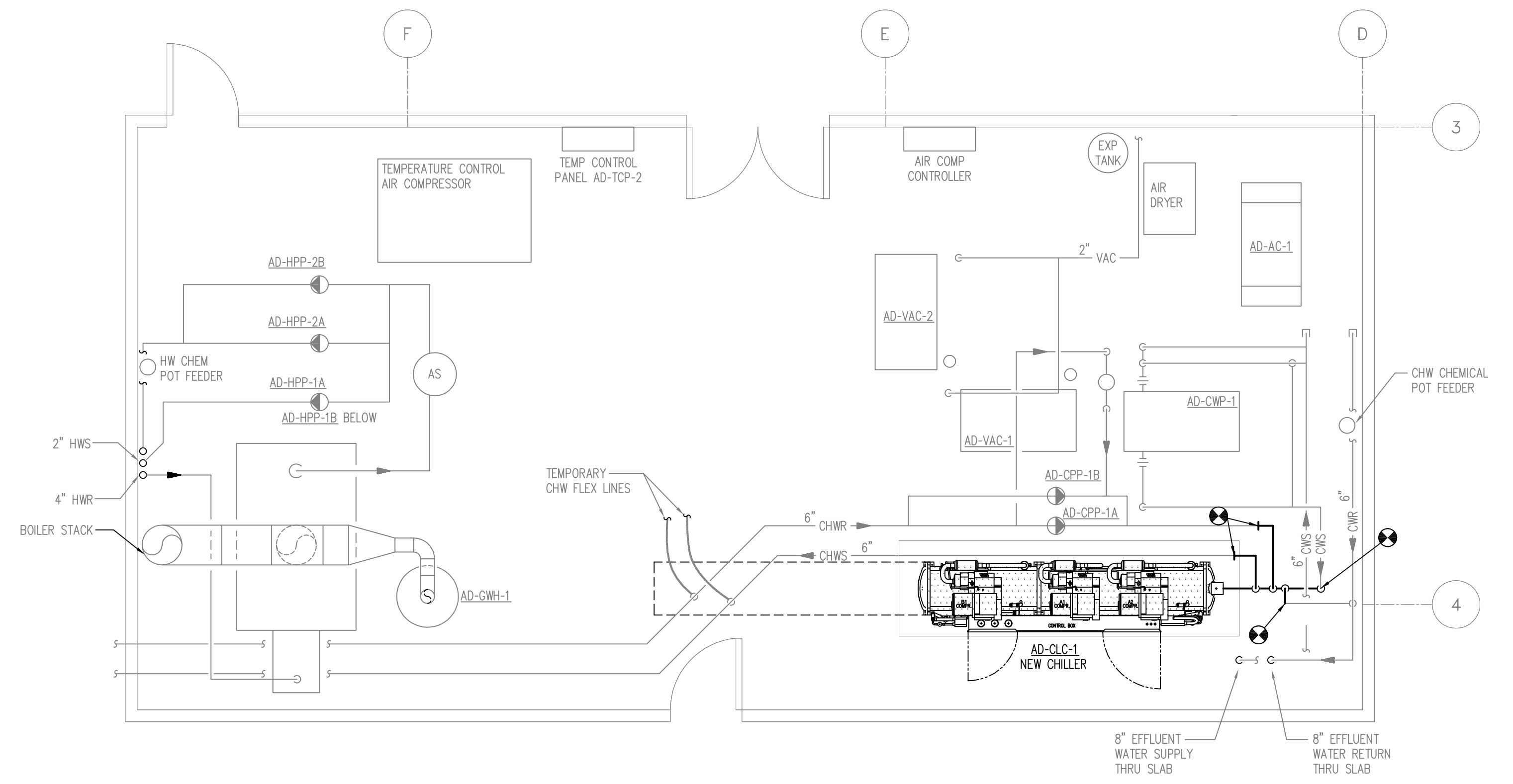
1. REMOVE EXISTING CHILLER, CONSTRUCTION MATERIALS AND ITEMS OF MECHANICAL AND ELECTRICAL EQUIPMENT WHICH ARE REMOVED AND NOT REUSED SHALL BE REMOVED FROM THE JOB-SITE UNLESS INDICATED AS TO BE RETAINED FOR THE OWNER. INCLUDE RIGGING, REMOVAL AND HAULING COST, AS WELL AS ANY SALVAGE VALUE, IN THE CONTRACT.
2. COORDINATE THE DISCONNECTION OF CHILLED WATER AND CONDENSER/EFFLUENT WATER PIPING FOR CONNECTION OF NEW CHILLER.
3. COORDINATE THE DEMOLITION AND THE NEW INSTALL WITH THE CURRENTLY OPERATING TEMPORARY CHILLER.



A LEVEL 1 DEMOLITION-MECHANICAL ROOM
SCALE: 1/4"=1'-0"

SHEET NOTES

- 1] PROVIDE EW CHILLER AD-CLC-1. MOUNT ON EXISTING HOUSEKEEPING PAD.
- 2] CONNECT NEW CHILLED AND CONDENSER WATER SUPPLY AND RETURN TO EXISTING PIPE AT LOCATIONS SHOWN.



A LEVEL 1 ENLARGED PLAN - MECHANICAL ROOM
SCALE: 1/4"=1'-0"

JORGE L. RIVERA
PE #45360

VOLT AIR
CONSULTING ENGINEERS

2101 West Columbus Dr Tampa, Florida 33607
Telephone 888.891.9713 Fax 813.254.8333
COA 27158 Project No. 08013

No.	DATE	REVISIONS
3		
2		
1	04/16/09	ADDENDUM NO. 1 ADDITIONAL WORK

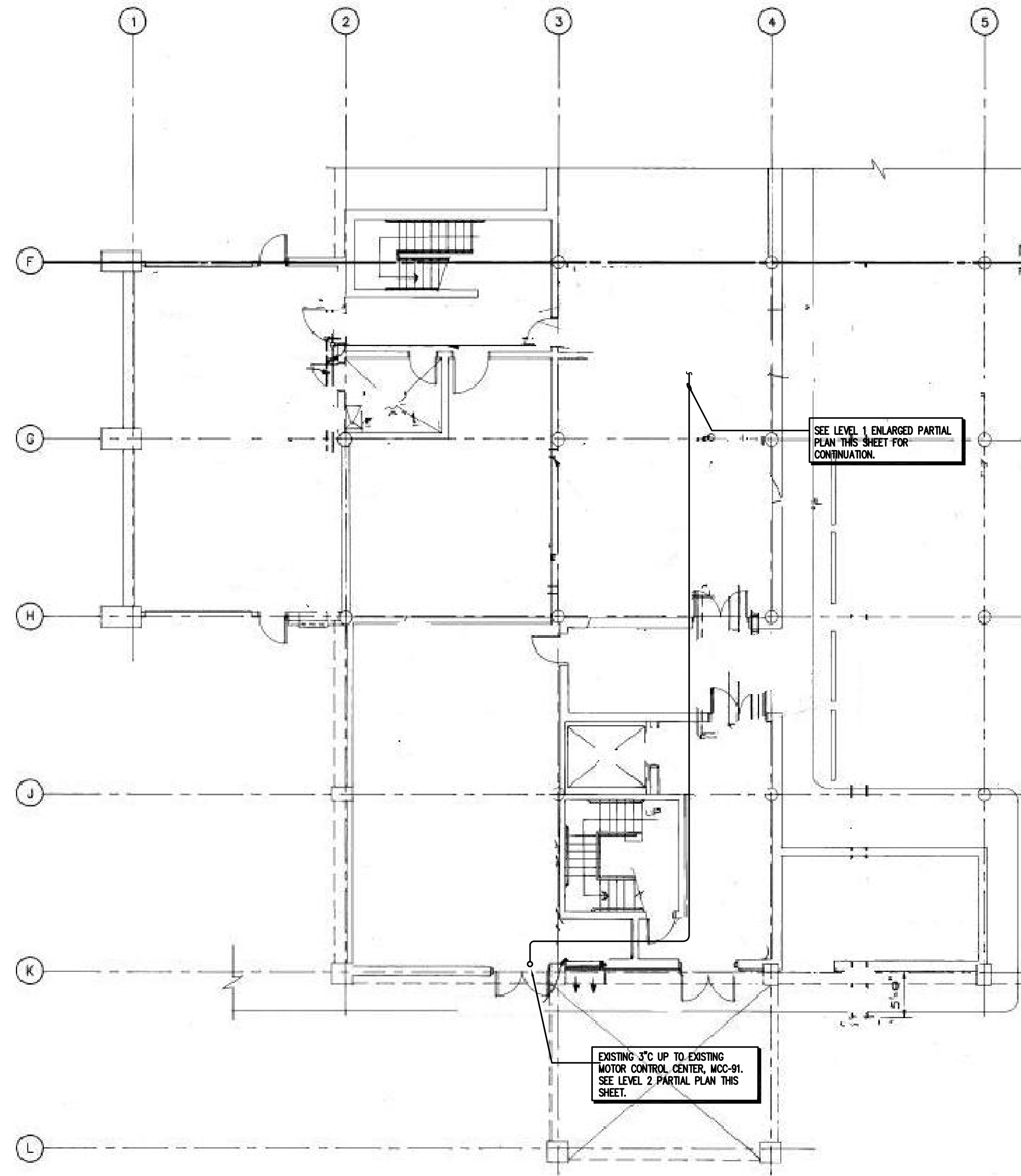
DES: MAG
DRN: MAG
CKD: JLR
DATE: 03/20/09

CITY of TAMPA
WASTEWATER DEPARTMENT

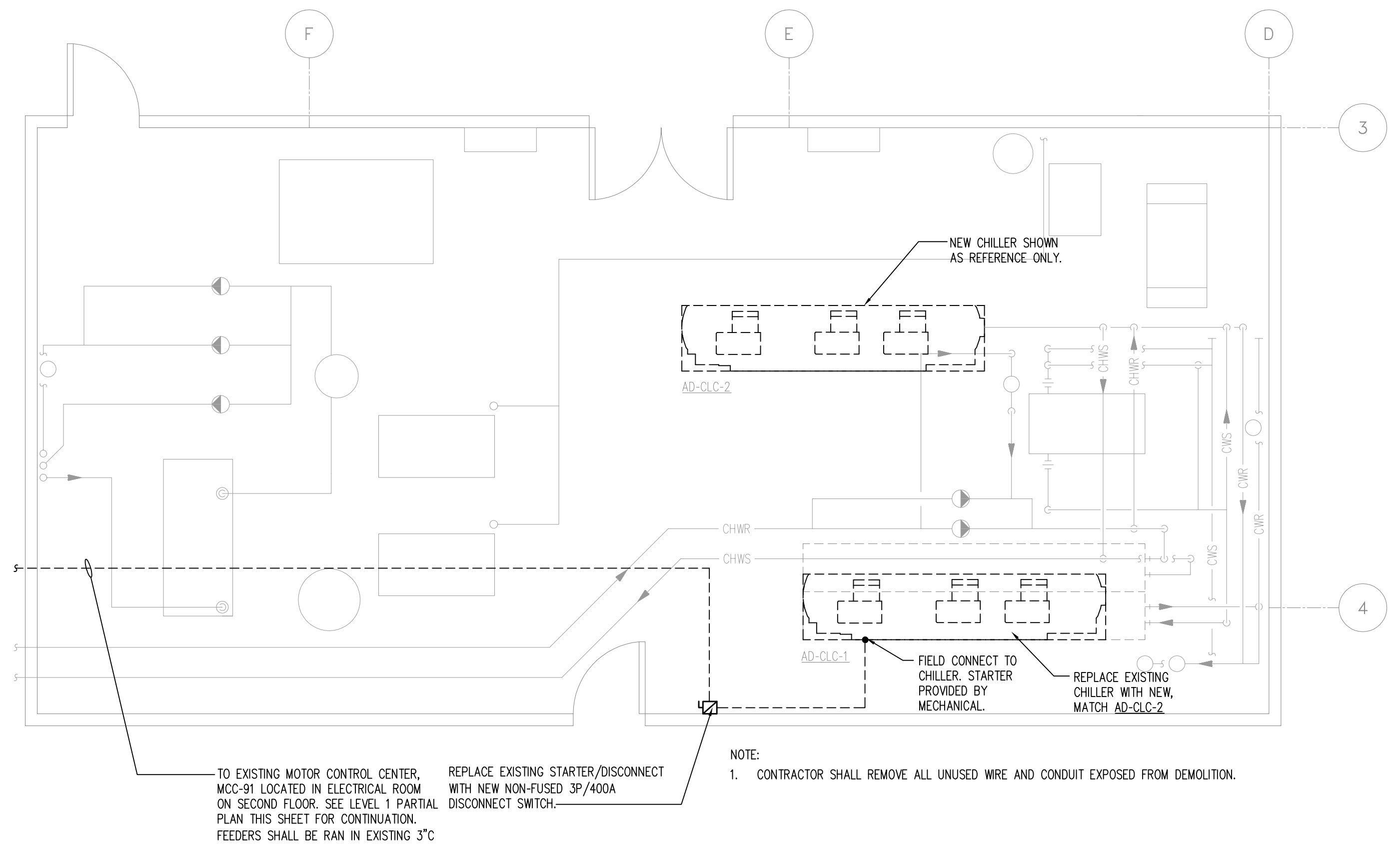
HFC AWTP Administration
HVAC Improvements

LEVEL 1 HVAC ENLARGED
PLAN

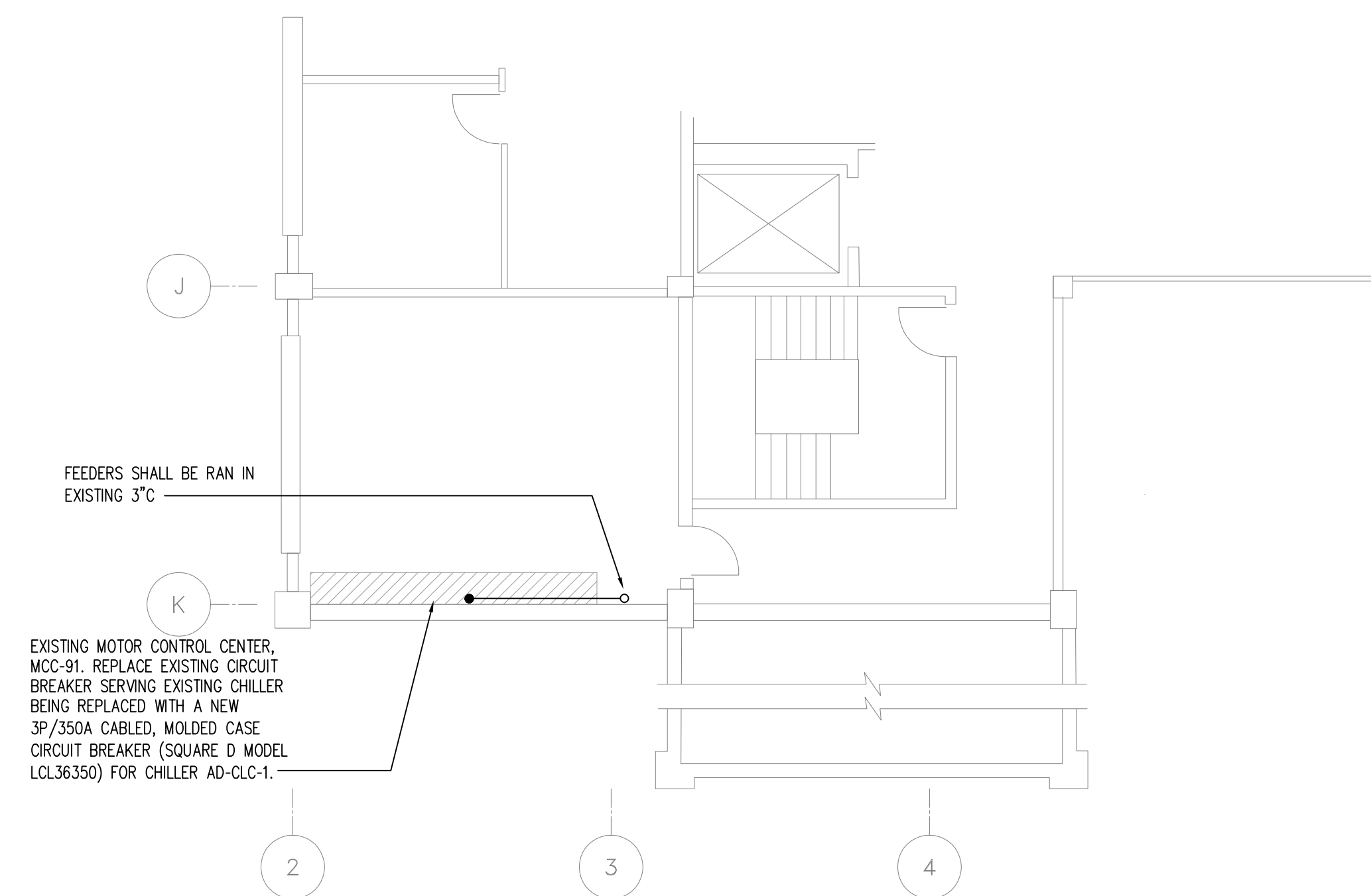
W.O. #5427
SHEET
SMI.1
OF



B LEVEL 1 PARTIAL PLAN - ELECTRICAL
SCALE: 1/8"=1'-0"



A LEVEL 1 ENLARGED PARTIAL PLAN - ELECTRICAL
SCALE: 1/4"=1'-0"



C LEVEL 2 PARTIAL PLAN - ELECTRICAL
SCALE: 1/8"=1'-0"

JULIUS D. DAVIS
PE#58005

VOLT AIR
CONSULTING ENGINEERS
2101 West Columbus Dr Tampa, Florida 33607
Telephone 888.891.9713 Fax 813.254.8333
COA 27158 Project No. 08013

No.	DATE	REVISIONS
3		
2		
1	04/16/09	ADDENDUM NO. 1 ADDITIONAL WORK

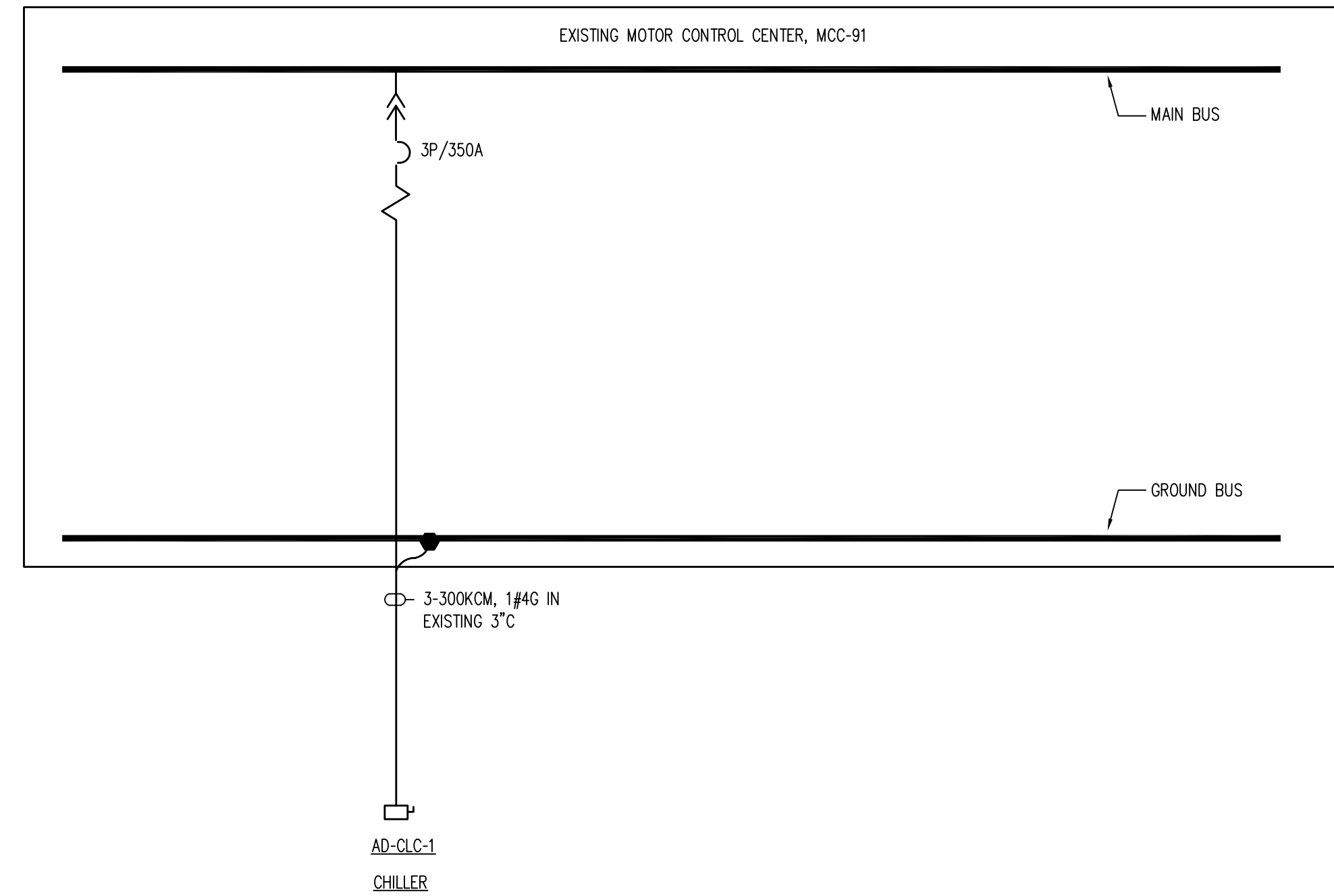
DES: JDD
DRN: R.HILL
CKD: JDD
DATE: 03/20/09

CITY of TAMPA
WASTEWATER DEPARTMENT

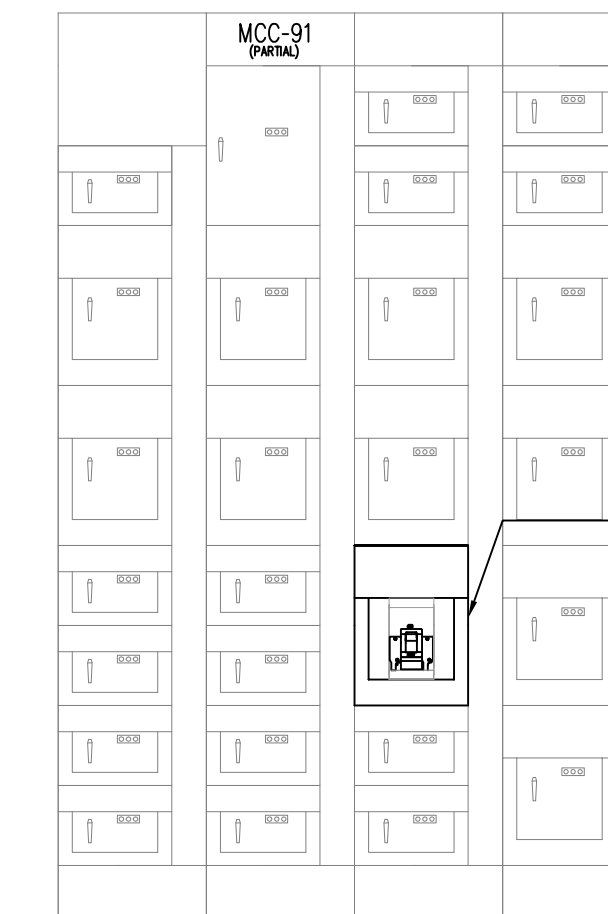
HFC AWTP Administration
HVAC Improvements

ELECTRICAL PARTIAL PLANS

W.O. #5427
SHEET
SEI.1
OF



A EXISTING MCC-91 DIAGRAM
SCALE: 1/8"=1'-0"



REPLACE EXISTING CIRCUIT BREAKER WITH NEW 3P/350 A CABLED, MOLDED CASE CIRCUIT BREAKER (SQUARE D MODEL LCL36350) FOR CHILLER AD-CLC-1

GENERAL NOTES:

- MCC COMPONENTS SHALL BE COMPATIBLE WITH EXISTING STRUCTURE.
- A SCHEMATIC DIAGRAM SHALL BE PROVIDED IN ALL CONTROL ENCLOSURES PRINT POCKETS.

B EXISTING PARTIAL MCC-91 ELEVATION
SCALE: N.T.S.

JULIUS D. DAVIS
PE#58005

VOLT AIR
CONSULTING ENGINEERS
2101 West Columbus Dr Tampa, Florida 33607
Telephone 888.891.9713 Fax 813.254.8333
COA 27158 Project No. 08013

No.	DATE	REVISIONS
3		
2		
1	04/16/09	ADDENDUM NO. 1 ADDITIONAL WORK

DES: JDD
DRN: R.HILL
CKD: JDD
DATE: 03/20/09

CITY of TAMPA
WASTEWATER DEPARTMENT

HFC AWTP Administration
HVAC Improvements

**ELECTRICAL ONE LINE
DIAGRAM**

W.O. #5427
SHEET
SEI.2
OF