



CITY OF TAMPA

Pam Iorio, Mayor

CONTRACT ADMINISTRATION DEPARTMENT

David L. Vaughn, AIA, Director

ADDENDUM NO. 1

DATE: OCTOBER 17, 2008

Contract 08-C-00045; Citywide Roadway Improvements FY09/10

Bidders on the above referenced project are hereby notified that the following clarifications are made to the Contract Documents. BIDS TO BE SUBMITTED SHALL CONFORM TO THIS NOTICE.

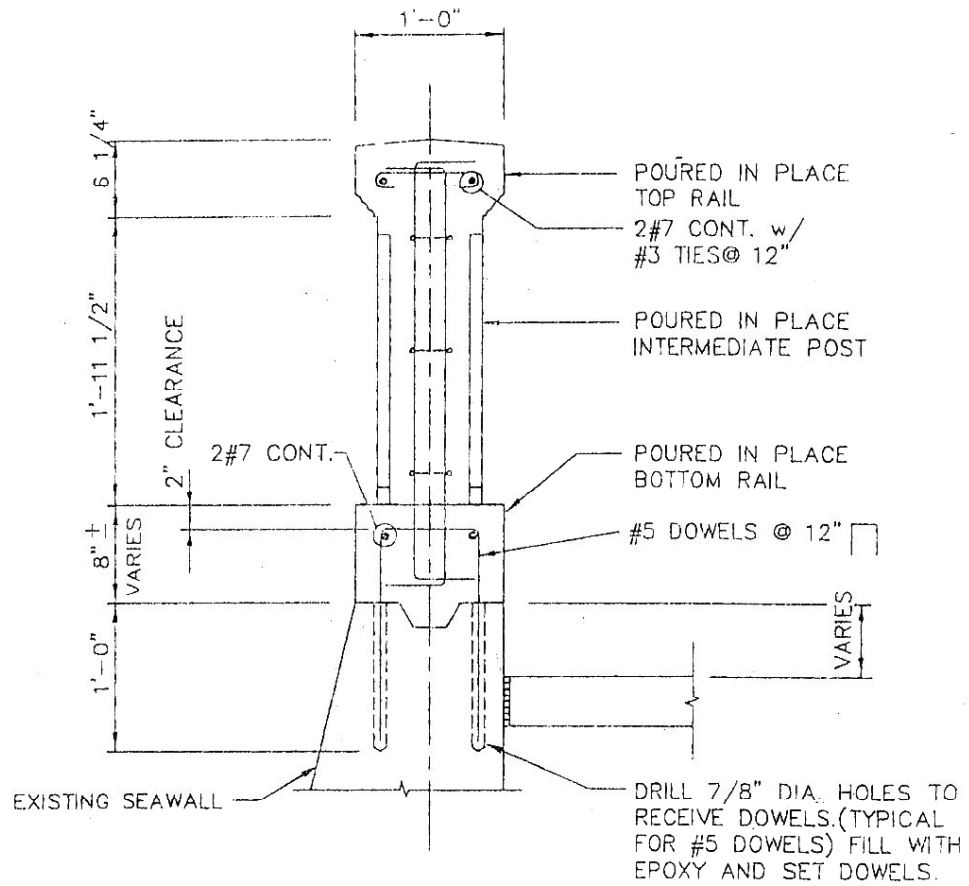
Item 1: Specific Provisions: Insert, after page SP-35, the attached Ballustrade Details, pages SP-36 through SP-44.

All other provisions of the Contract Documents and Specifications not in conflict with this clarification shall remain in full force and effect.

Jim Greiner, P.E., Contract Manager
Contract Administration Department

306 E. Jackson Street, 4N • Tampa, Florida 33602 • (813) 274-8456 • FAX: (813) 274-8080

TampaGov
www.tampagov.net

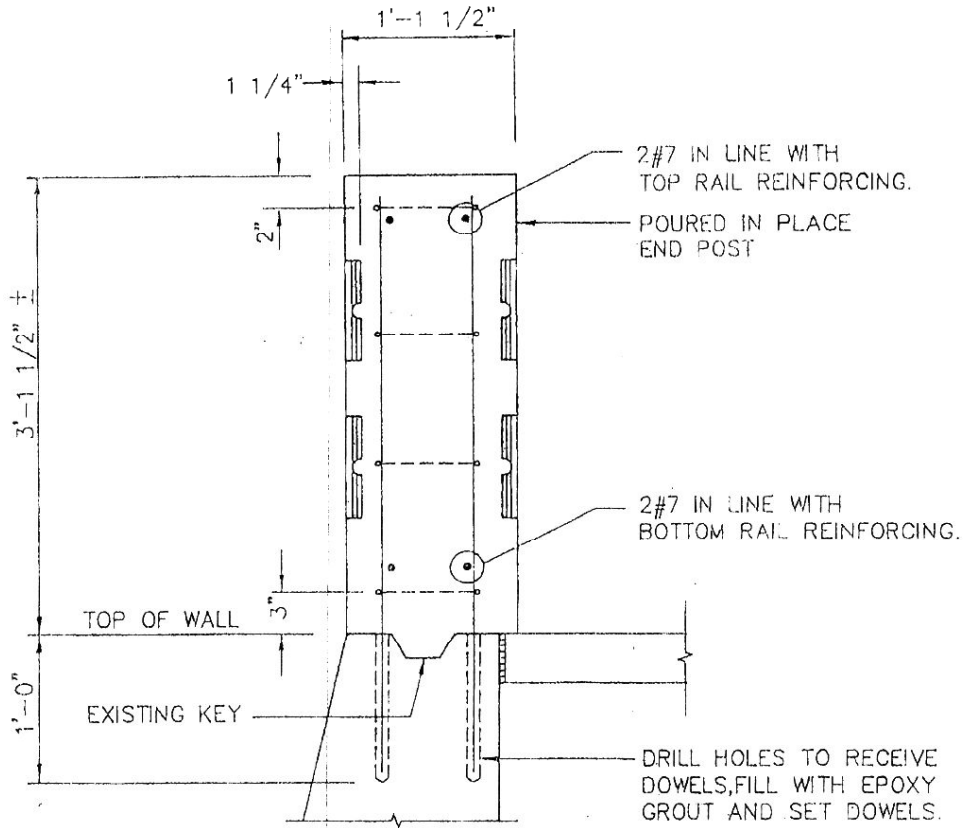


SECTION—THROUGH INTERMEDIATE POST

2
S2

SC: 1"=1'-0"

SP. 36

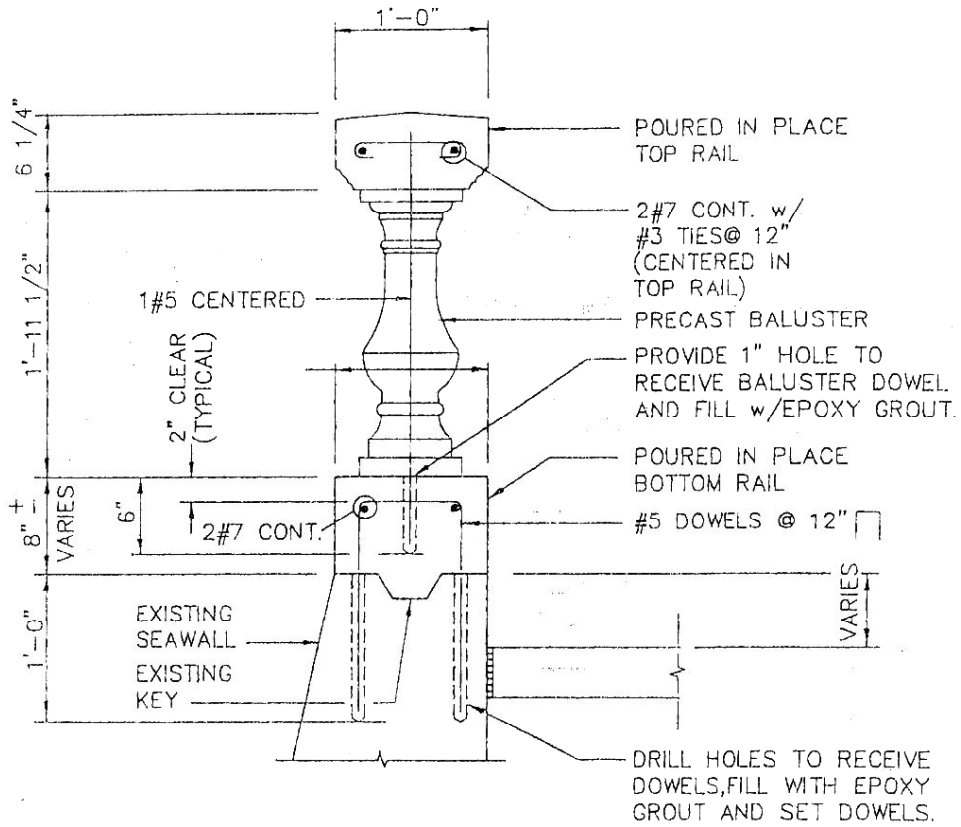


3
S2

SECTION—THROUGH END WALL POST

SC: 1"=1'-0"

SP-37



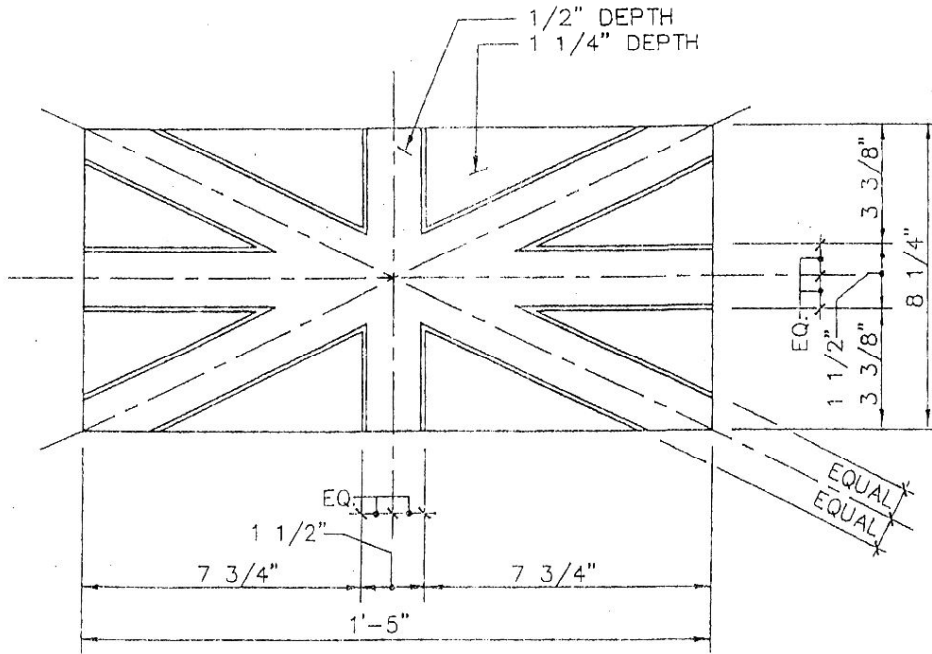
SEE DETAIL $\frac{5}{S3}$ & $\frac{6}{S3}$
 FOR BALUSTRADE NOT IN LINE WITH SEAWALL.

$\frac{4}{S2}$

NEW BALUSTRADE DETAIL

SC: 1" = 1'-0"

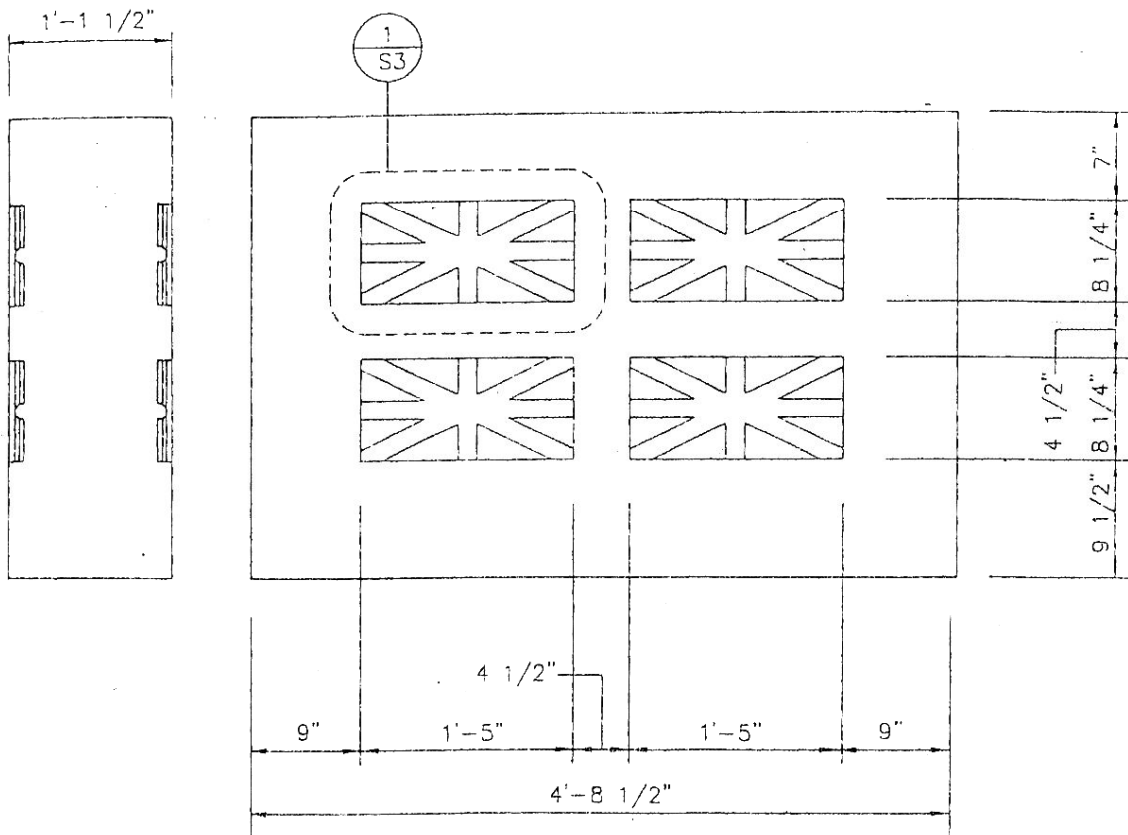
SP. 38



1
S3

END WALL POST INSET DETAIL

SP-39

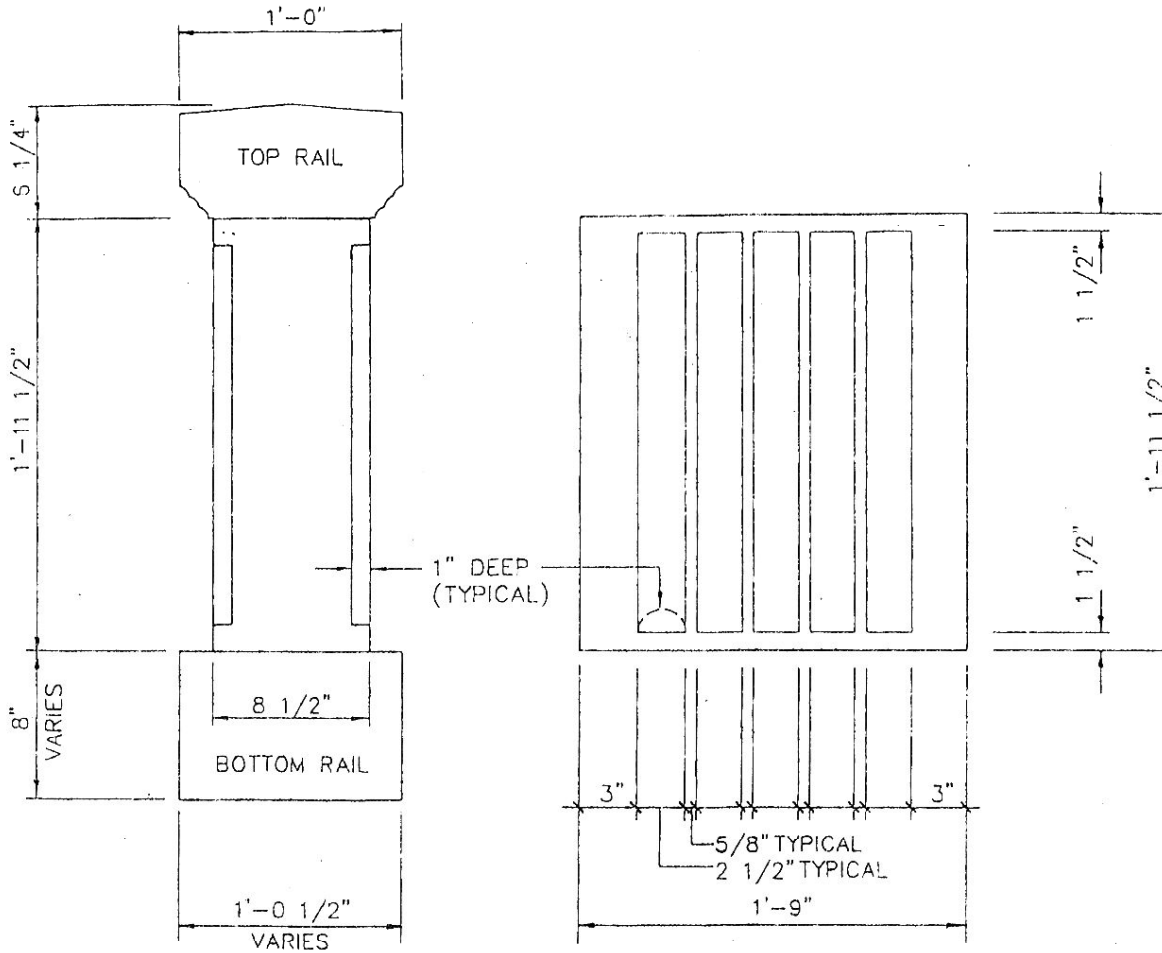


2
S3

END WALL POST DETAIL

SC: 1" = 1'-0"

SP-40

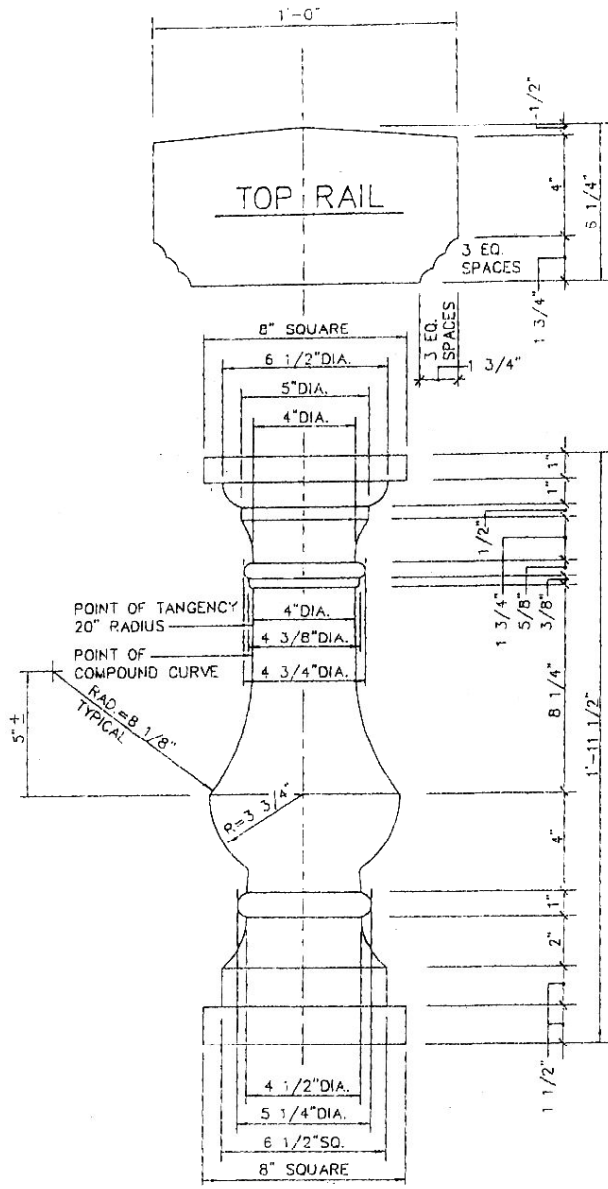


3
 S3

INTERMEDIATE POST DETAIL

SC: 1 1/2" = 1'-0"

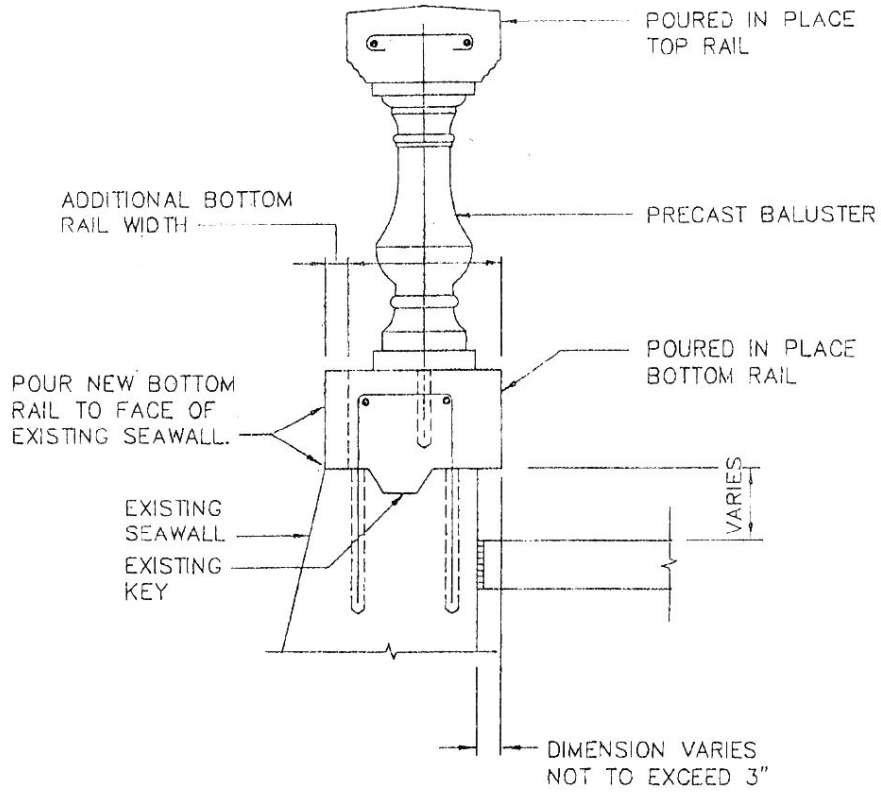
SP. 41



4
S3

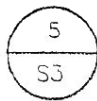
TYPICAL BALUSTER DETAIL

SP. A2



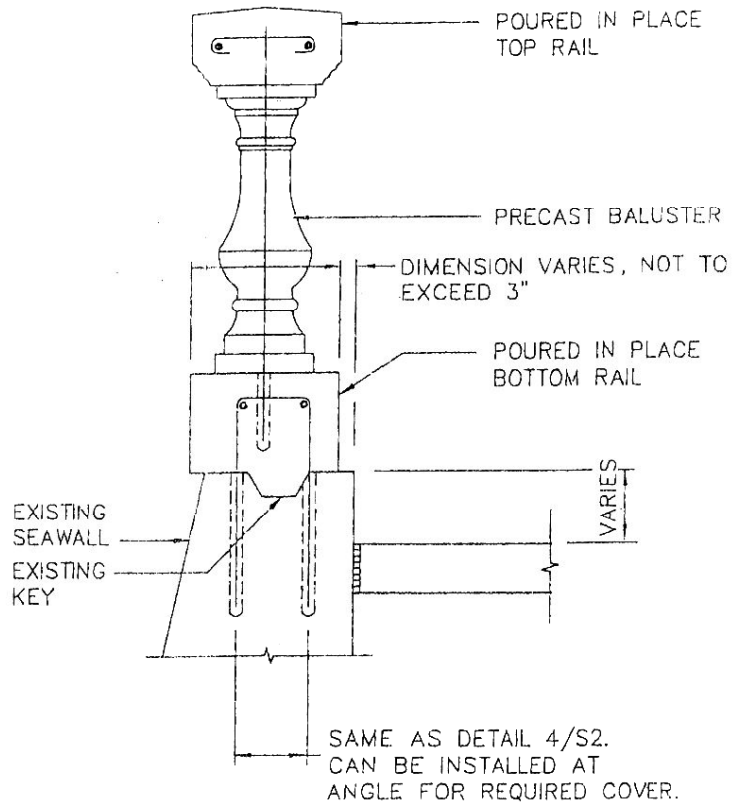
SEE DETAIL
FOR BALUSTRADE DIMENSIONS AND
BALUSTRADE REINFORCING.

(BALUSTRADE OFFSET ON SIDEWALK SIDE)



NEW BALUSTRADE DETAIL

SP-43



4
S2

SEE DETAIL
FOR BALUSTRADE DIMENSIONS AND
BALUSTRADE REINFORCING.

(BALUSTRADE OFFSET ON SEA SIDE)

6
S3

NEW BALUSTRADE DETAIL

SP-44