



CITY OF TAMPA

Pam Iorio, Mayor

CONTRACT ADMINISTRATION DEPARTMENT

David L. Vaughn, AIA, Director

ADDENDUM NO. 1
DATE: November 12, 2009

Project: Davis Islands Trail
Project No. 09-C-00019

Bidders on the above referenced project are hereby notified that the following addendum is made to the Contract Documents. BIDS TO BE SUBMITTED SHALL CONFORM TO THIS NOTICE.

Item 1: In the plans, insert the attached plan Sheet C-15 after Sheet C-14.

Item 2: In the plans, in the lower right-hand corner, delete the reference to "Of 18 Sheets" from sheets C-1 through C-15, L-1, L-2 and G-1.

Item 3: In the Specifications, in the Special Conditions, replace section 11-0 Record Drawings with the following:

11.0 RECORD DRAWINGS:

During the course of the work, Contractor shall maintain, at the site, a clean undamaged set of the Contract Documents. Contractor shall mark set, on a daily basis, with location and progress of all contract work, including but not limited to:

1. Sewer, water, stormwater and irrigation fabrication drawings showing to scale all manholes, all distances and angles between manholes, line dimension, grid co-ordinates, trunk lines, inverts and cleanouts,
2. Fencing, roadway, parking and sleeving,
3. Electrical service, and
4. General building location.

Drawings shall be on site at all times and available for review by the City. Failure of Contractor to have drawings on site and/or up to date may result in suspension of work until situation is corrected. Extension of contract will not be granted for such condition.

At conclusion of work, the Contractor shall provide the City with one complete set of Electronic Record Drawings incorporating changes described above, and four marked hard copy sets of as-built record drawings clean and damaged free shall also be submitted to the City at the same time. Electronic files will be issued to the Contractor by the City of Tampa. These files will be AutoCAD DWG, AutoCAD DWF or Adobe PDF latest versions.

A Work Directive Change is a written directive to the Contractor, issued on or after the date of the execution of the Agreement, and signed by the Engineer on behalf of the City, ordering an addition, deletion or revision in the work, or responding to an emergency. A Work Directive Change will not change the contract price or the time for completion, but is evidence that the parties expect that the change directed or documented by an Authorization to Proceed with Extra Work letter will be incorporated in a subsequently issued Change Order following negotiations by the parties as to its effect, if any, on the contract price or the time for completion.

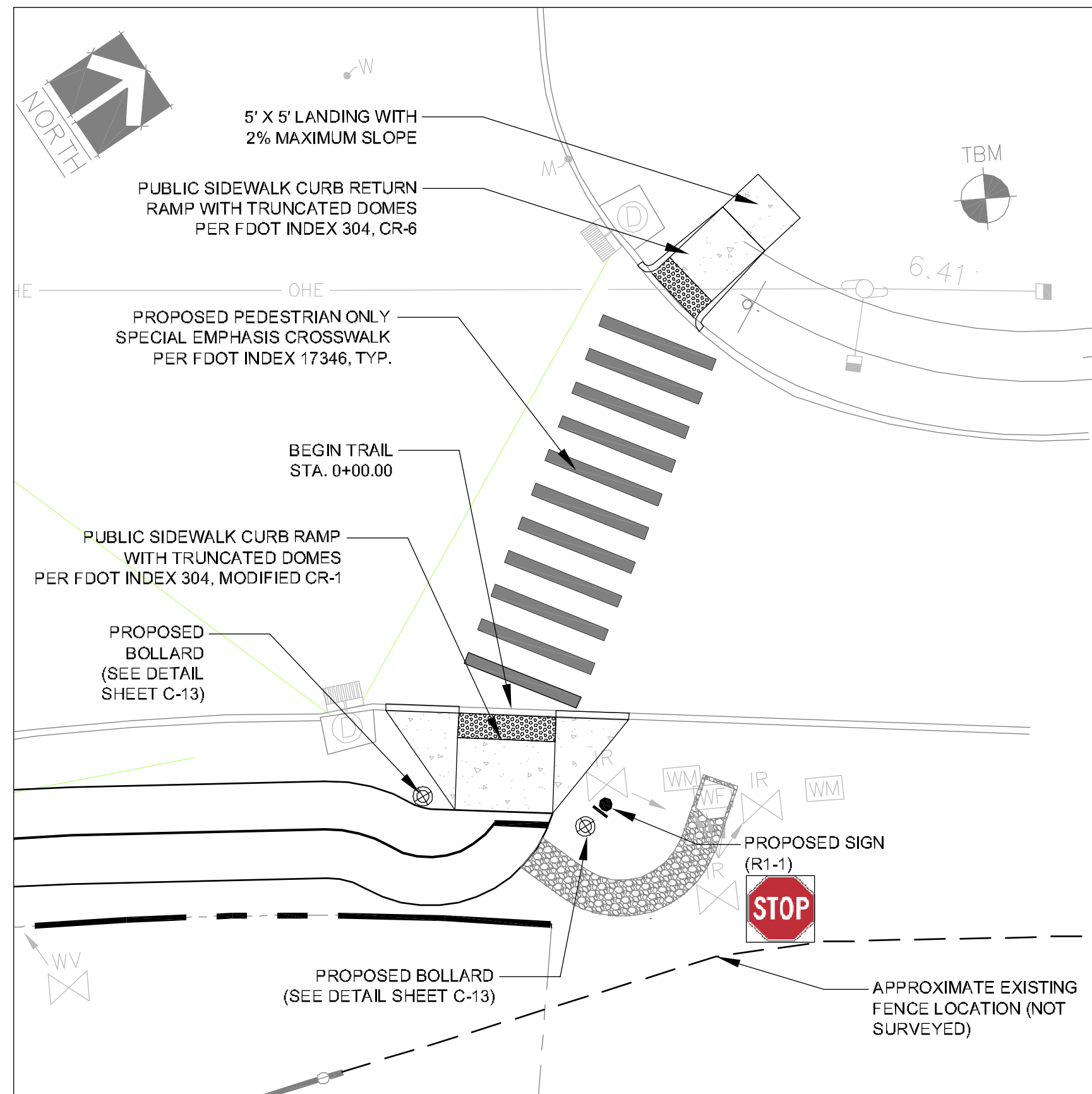
Without invalidating the Agreement, additions, deletions or revisions in the work may, at any time or from time to time, be authorized by a Change Order or a Work Directive Change. Upon receipt of any such document, the Contractor shall promptly proceed with the work involved.

This addendum shall be included in and attached to the inside cover of the Contract Documents by and upon which bids are submitted. All other provisions of the Contract Documents and Specifications not in conflict with this Addendum shall remain in full force and effect. Questions are to be e-mailed to Contract Administration@tampagov.net.

Jim Greiner, P.E., Contract Manager

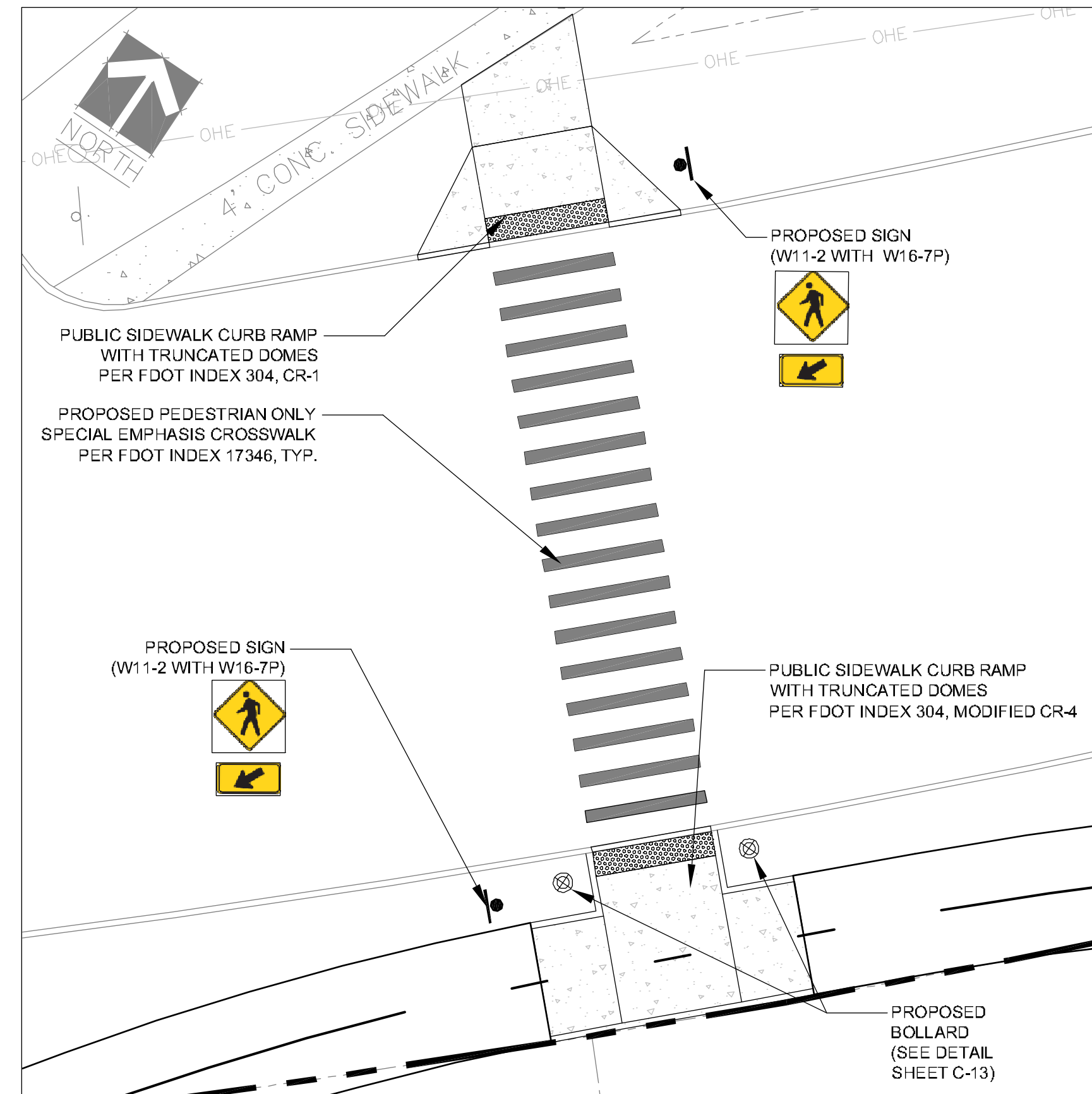
306 E. Jackson Street, 4N • Tampa, Florida 33602 • (813) 274-8456 • FAX: (813) 274-8080

TampaGov
www.tampagov.net



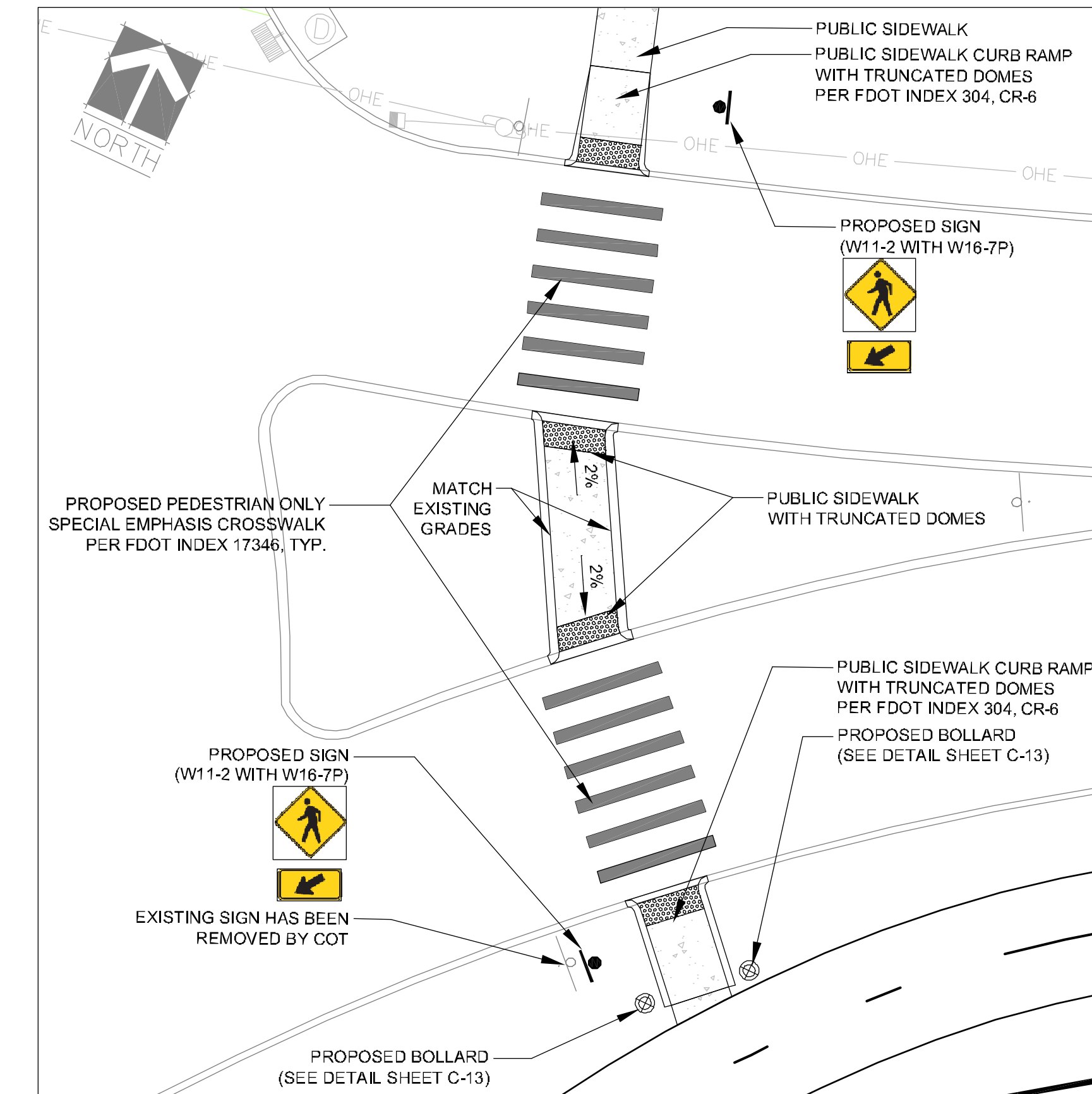
Pedestrian Crossing A Detail (Sheet C-1)

Scale 1"=10'



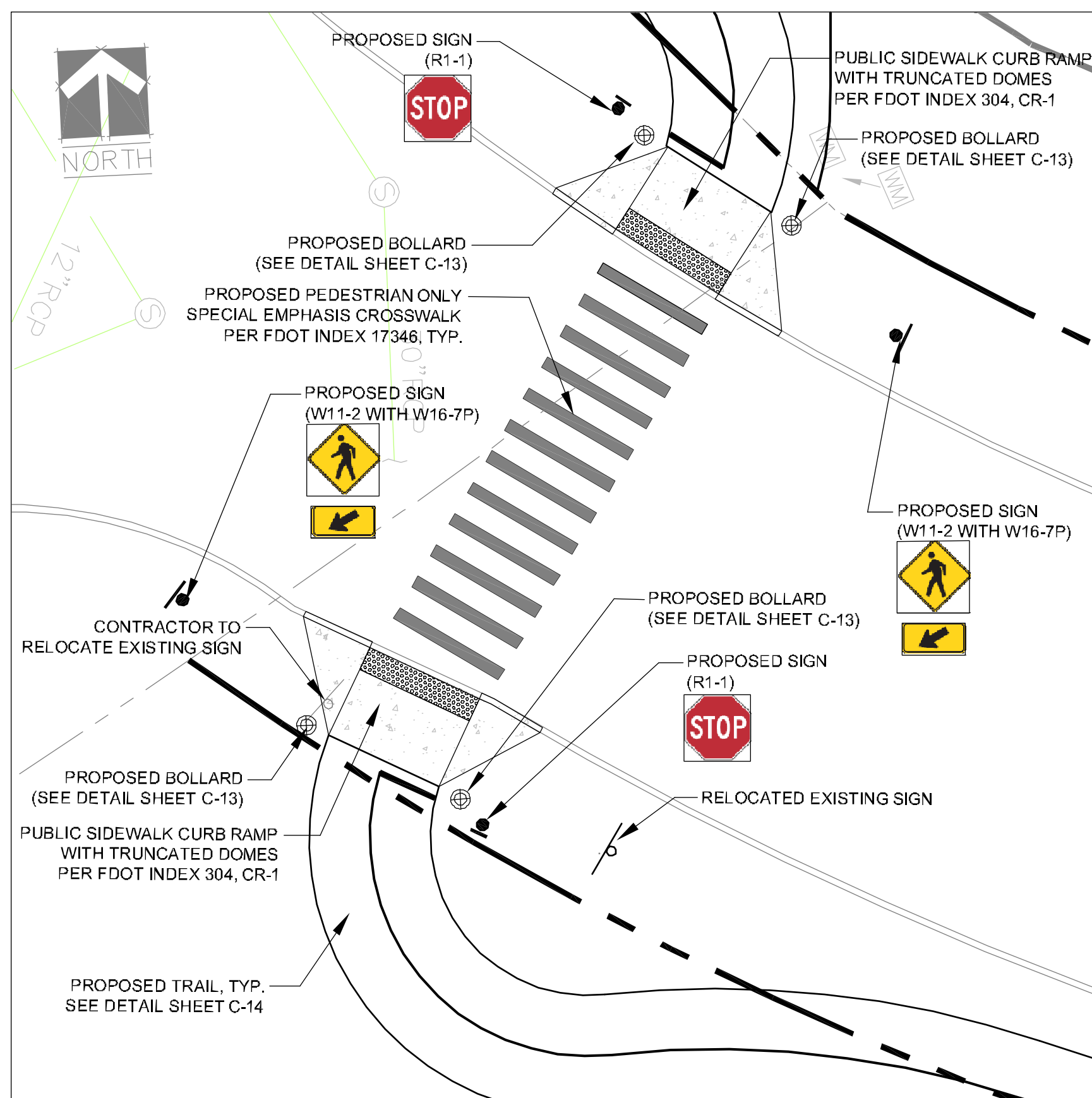
Pedestrian Crossing B Detail (Sheet C-2)

Scale 1"=10'



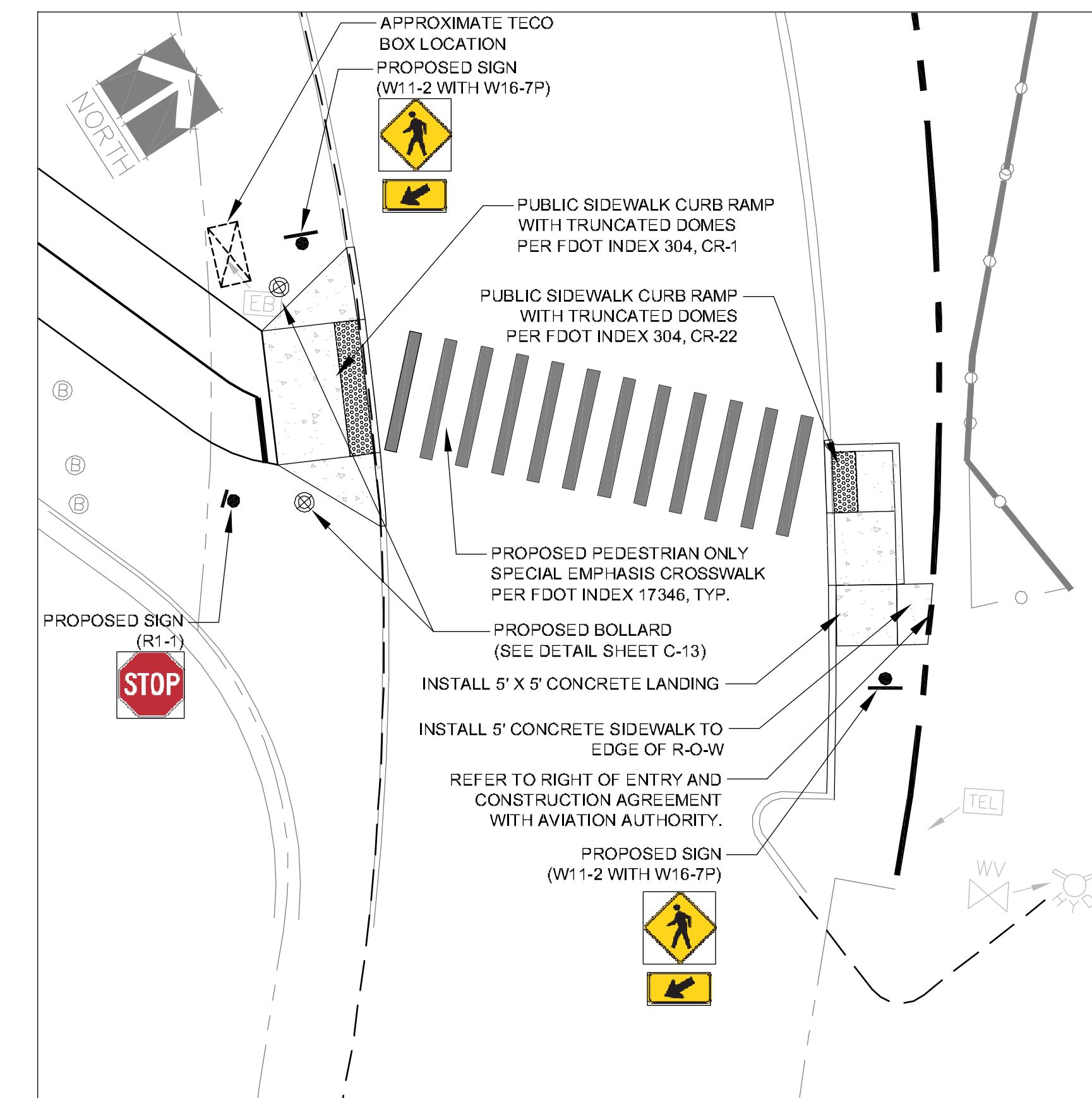
Pedestrian Crossing C Detail (Sheet C-7)

Scale 1"=10'



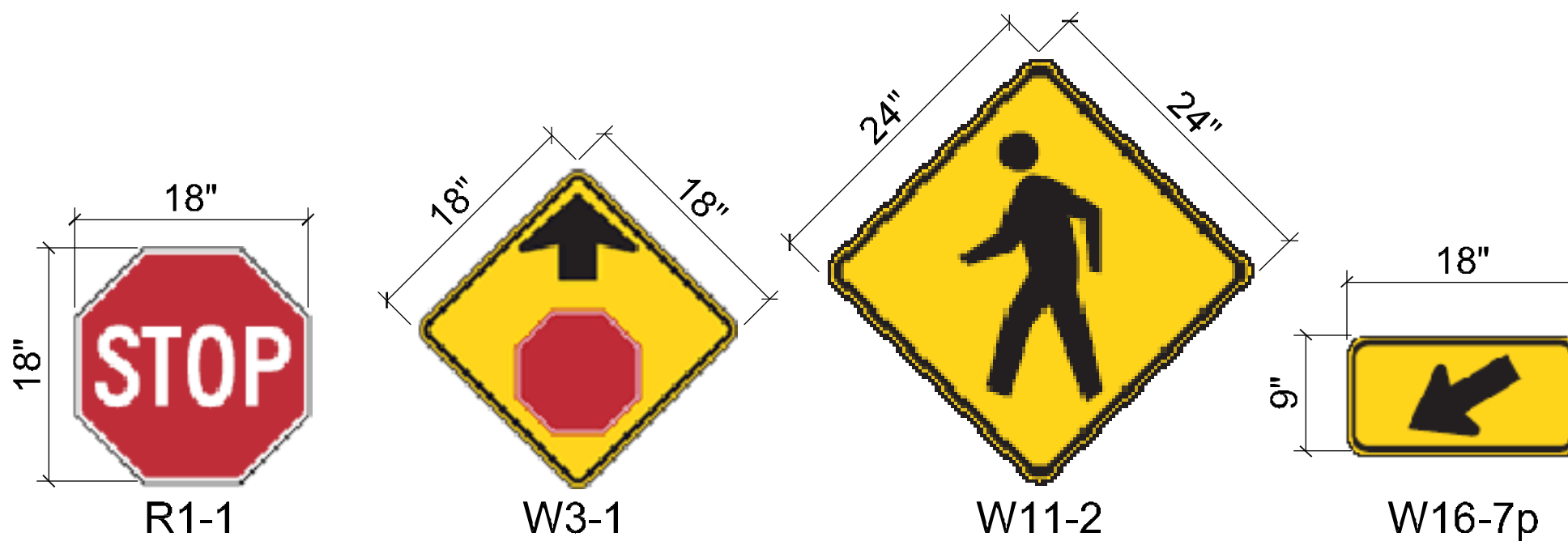
Pedestrian Crossing D Detail (Sheet C-9)

Scale 1"=10'



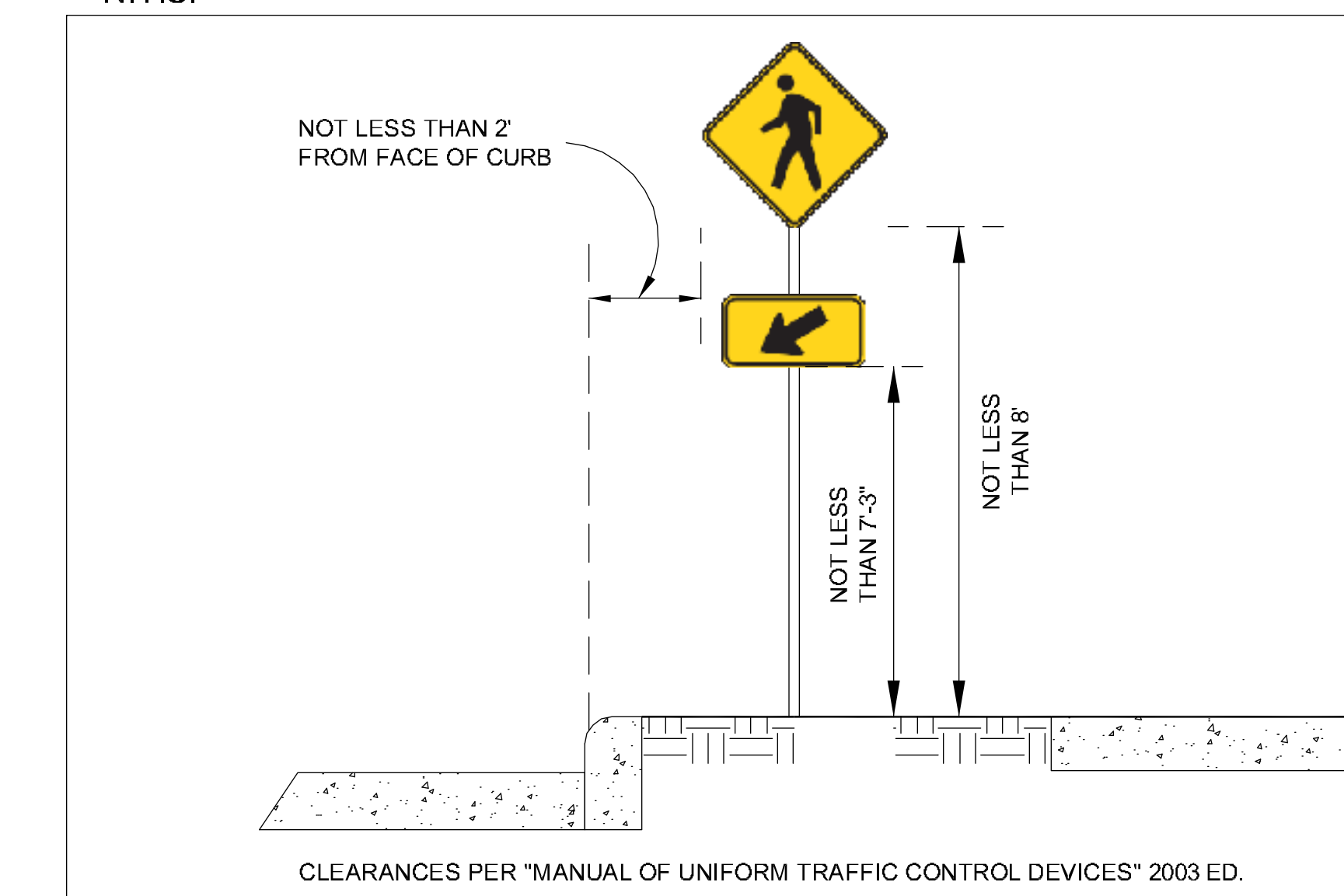
Pedestrian Crossing E Detail (Sheet C-12)

Scale 1"=10'



Typical Sign Sizes

N.T.S.

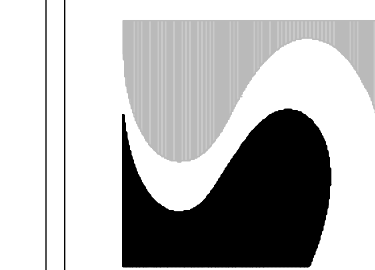


Signage Clearances (Typ.)

N.T.S.

100% Construction Plans	07/31/09
90% Construction Plans	05/08/09
50% Construction Plans	12/17/08
ISSUED	
No.	Revisions
	Date

Sprinkle CONSULTING
 Planners + Engineers + Landscape Architects
 18115 U.S. Hwy. 41 N. Suite 600 Lutz, Florida 33549
 Tampa Ph. (813) 949-7449 Fax 949-1772
 www.sprinkleconsulting.com
 Board of Engineers Certificate of Authorization #4548
 Landscape Architect Certification # 28000261



Davis Islands Trail
 City of Tampa Parks and Recreation Department
 Paving, Grading & Drainage
 Crosswalk & Signage Detail

Eugene B. Roberts, P.E.
 Florida License No. 52750

October 27, 2009
 Date

Drawn: JDB/JMT

Checked: EBR/CRN

Scale: As Noted

Dwg: 4055-08 (C-15) Crosswalk Details.dwg

Job No: 4055-08

Sheet

C-15

Of 18 Sheets