



# CITY OF TAMPA

Pam Iorio, Mayor

CONTRACT ADMINISTRATION DEPARTMENT

David L. Vaughn, AIA, Director

## ADDENDUM NO. 2

DATE: June 3, 2009

Project: Furnish and Install Miscellaneous Water Mains 2" to 42" Diameter-FY09 Contract A

Contract No. 09-C-00029

Bidders on the above referenced project are hereby notified that the following addendum is made to the Contract Documents. BIDS TO BE SUBMITTED SHALL CONFORM TO THIS NOTICE.

### MATERIAL SPECIFICATIONS

Item 1: On page MS-12, in 1. GENERAL, in the 3<sup>rd</sup> paragraph: INSERT: 5.10A, after 5.10 and INSERT: 5.11A, after 5.11.

Item 2: On page MS-14, Replace line 8 with:  
MB-17 TAMPA-BL and MB-18 TAMPA-BL only  
(as of May 2009, Rhino's #66 meter box equivalent <for single 1 1/2" or 2" meters> has not been approved for City water installations)

Item 3: On pg. MS-14, Replace line 9 with: models DFW37-C and DFW39-C

Item 4: On page MS-14, Replace lines 10 and 11 (the text in parenthesis) with:  
DFW37C-SBSM TAMPA and DFW39C-SBSM TAMPA  
(as of May 2009, DFW Plastics #66 meter box equivalent <for single 1 1/2" or 2" meters> has not been approved for City water installations)

### CONTRACT PAY ITEMS

Item 5: On pg CP-3, under C2.10 Ductile Iron and PVC Pipe, REPLACE item 14 with the following:  
14. Furnishing and installing on all PVC pipe and fittings, and on all ductile iron pipe and fittings 16" and larger, a continuous double run of 14-gauge solid copper wire, in accordance with Standard Detail 7.02, attached to the top of the pipe with duct tape. The wire shall be looped around each bell. There shall be no dead ends and the locator wire shall be brought into a separate curb stop box at every valve box. Connections between wire ends shall be made using an approved connection as shown in the Standard Detail;

### STANDARD DETAILS

Item 6: Replace Sheets i and ii with attached sheets i and ii, which are identified as addendum 2.

Item 7: Add Standard Detail 5.10A after Standard Detail 5.10.

Item 8: Add Standard Detail 5.11A after Standard Detail 5.11.

306 E. Jackson Street, 4N • Tampa, Florida 33602 • (813) 274-8456 • FAX: (813) 274-8080

Item 9: Replace Detail 7.02 DOUBLE COPPER TRACER WIRE ON PIPE with the attached Detail 7.02 (revised May '09).

This addendum shall be included in and attached to the inside cover of the Contract Documents by and upon which bids are submitted.

All other provisions of the Contract Documents and Specifications not in conflict with this Addendum shall remain in full force and effect.

Questions are to be e-mailed to [Contract Administration@tampagov.net](mailto:ContractAdministration@tampagov.net).

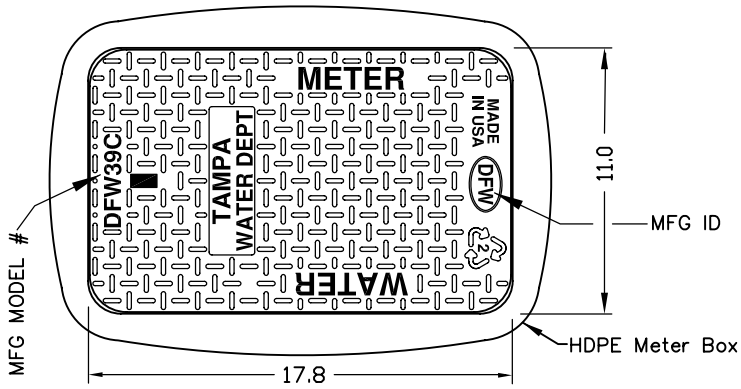
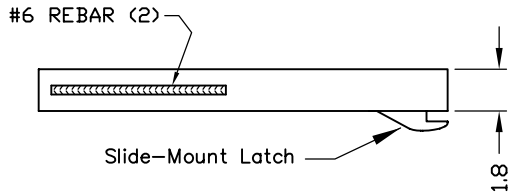
  
\_\_\_\_\_  
Jim Greiner, P.E., Contract Manager  
Contract Administration Department

## **STANDARD DETAILS - TAMPA WATER DEPARTMENT 2009**

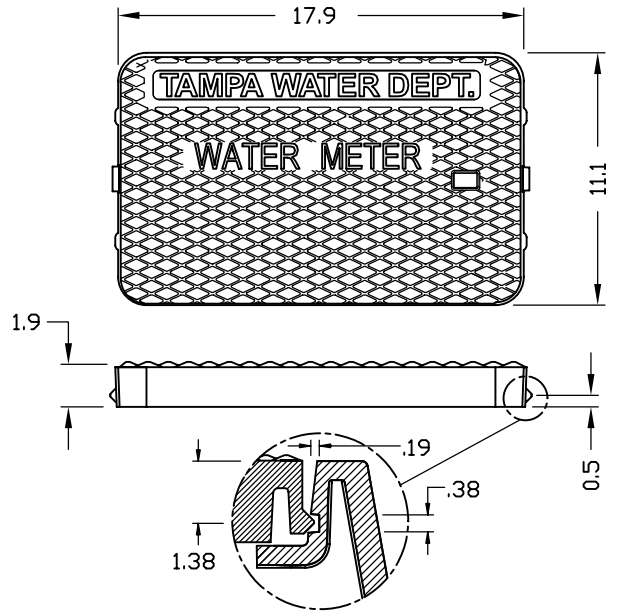
- 2.01 TRENCHING, BEDDING AND BACKFILL DETAIL FOR NON-PERVIOUS (paved) AREAS-TYP
- 2.02 TRENCHING, BEDDING AND BACKFILL DETAIL FOR PERVIOUS (non-paved) AREAS-TYP
- 2.03 JACKING & BORING FOR PAVEMENT CROSSING
- 2.04 JACKING & BORING FOR RAILROAD CROSSING
- 2.05 POLYETHYLENE ENCASEMENT INSTALLATION DETAIL
- 2.06 REINFORCED CONCRETE SHOCK PAD
- 2.07 THRUST BLOCKS FOR BENDS
- 2.08 THRUST BLOCKS FOR PLUGS
- 2.09 THRUST BLOCKS FOR TEES
- 2.10 PRECAST CONCRETE THRUST BLOCK
- 2.11 RESTRAINED JOINT STANDARD FOR BENDS, PLUGS, AND CAPS
- 2.12 RESTRAINED JOINT STANDARD FOR TEES AND REDUCERS
- 2.13 TAPPED CONNECTION FOR <4" WATER MAINS
- 2.14 AUTOMATIC AIR RELEASE VALVE
- 2.15 PEDESTAL FOR AUTOMATIC AIR RELEASE VALVE
- 2.16 BLOW-OFF VALVE ASSEMBLY W/2" PVC OR HDPE PIPE
- 2.17 BLOW-OFF VALVE ASSEMBLY FOR ≥4" MAINS W/DI, CI OR PVC PIPE
- 2.18 TEMPORARY SAMPLE TAP INSTALLATION W/DI, CI, OR PVC PIPE
- 2.19 TEMPORARY SAMPLE TAP INSTALLATION FOR END OF LINE W/DI, CI, OR PVC PIPE
- 2.20 DUCTILE IRON PIPE IDENTIFICATION DETAIL
- 3.01 VALVE INSTALLATION W/VALVE BOX & PAD FOR DI OR CI PIPE
- 3.02 VALVE INSTALLATION W/VALVE BOX & PAD FOR PVC PIPE
- 3.03 BUTTERFLY VALVE INSTALLATION W/VALVE BOX & PAD
- 3.04 VALVE BOX, SLIP-TYPE
- 4.01 FIRE HYDRANT INSTALLATION
- 4.02 FIRE HYDRANT METHODS OF INSTALLATION
- 5.01 TAPPING DETAIL FOR 3/4", 1", 1-1/2" & 2" SERVICE W/DI, CI OR PVC PIPE
- 5.02 SINGLE METER SET DETAIL (3/4", 1", 1-1/2", 2")
- 5.03 DUAL METER SET DETAIL (3/4" & 1")
- 5.04 SINGLE & DUAL METERED SERVICE-SHORT SIDE (3/4", 1", 1-1/2" & 2")
- 5.05 SINGLE & DUAL METERED SERVICE-LONG SIDE (3/4", 1", 1-1/2" & 2")
- 5.09 2" DOUBLE DETECTOR CHECK VALVE ASSEMBLY IN METER BOX
- 5.10 3/4" OR 1" SINGLE SERVICE HDPE METER BOX
- 5.10A 3/4" OR 1" SINGLE SERVICE HDPE METER BOX
- 5.11 3/4" OR 1" DUAL SERVICE HDPE METER BOX
- 5.11A 3/4" OR 1" DUAL SERVICE HDPE METER BOX
- 5.12 1-1/2" OR 2" SINGLE SERVICE HDPE METER BOX
- 6.01 ABOVE GROUND TURBINE METER W/STRAINERS
- 6.02 ABOVE GROUND DOUBLE DETECTOR CHECK VALVE ASSEMBLY
- 6.02B ABOVE GROUND DOUBLE DETECTOR CHECK VALVE ASSEMBLY AND  
TURBINE METER W/STRAINER
- 6.03 PIPE SUPPORTS FOR ABOVE GROUND DDCV ASSEMBLY
- 6.04 TURBINE METER IN VAULT

## **STANDARD DETAILS - TAMPA WATER DEPARTMENT 2009**

- 6.05 DOUBLE DETECTOR CHECK VALVE ASSEMBLY IN VAULT
- 6.06 DOUBLE DETECTOR CHECK VALVE ASSEMBLY W/ $\geq 3$ " DOMESTIC METER IN VAULT
- 6.07 VAULT CONSTRUCTION DETAIL FOR DDCVA AND/OR TURBINE METERS
- 6.08 VAULT CONCRETE SLAB DETAIL FOR DDCVA AND/OR TURBINE METERS
- 6.09 TURBINE METER W/STRAINERS IN ABOVE GROUND VAULT
- 6.10 DOUBLE DETECTOR CHECK VALVE ASSEMBLY IN ABOVE GROUND VAULT
- 6.11 FIRE LINE SERVICE W/ $\geq 3$ " DOMESTIC METERS IN ABOVE GROUND VAULT
- 6.12 ABOVE GROUND VAULT CROSS-SECTION
- 6.13 2" BY-PASS LINE
- 7.01 PIPE BEDDING AND TRENCH FOR PVC PIPE
- 7.02 DOUBLE COPPER TRACER WIRE ON PVC PIPE
- 8.01 HDPE PIPE TO MJ FITTING TRANSITION
- 8.02 HDPE PIPE TO DIP/PVCP SPIGOT-TO-SPIGOT CONNECTION
- 8.03 "TAPPED" CONNECTION FOR  $< 4$ " WATER MAIN TO HDPE WATER MAIN
- 8.04 BLOW-OFF VALVE ASSEMBLY ON  $\geq 4$ " HDPE PIPE
- 8.05 TEMPORARY SAMPLE TAP INSTALLATION W/HDPE PIPE
- 8.06 TEMPORARY SAMPLE TAP INSTALLATION FOR END-OF-LINE W/HDPE PIPE
- 8.07 VALVE SETTING W/HDPE PIPE
- 8.08 TAPPING DETAIL FOR 1" & 2" SERVICE W/HDPE PIPE
- 8.09 SINGLE & DUAL METERED SERVICE - SHORT SIDE 3/4", 1", 1-1/2" AND 2" HDPE W/PIPE
- 8.10 SINGLE & DUAL METERED SERVICE - LONG SIDE 3/4", 1", 1-1/2" AND 2" W/HDPE PIPE
- 9.01 CITY OF TAMPA PROJECT SIGN

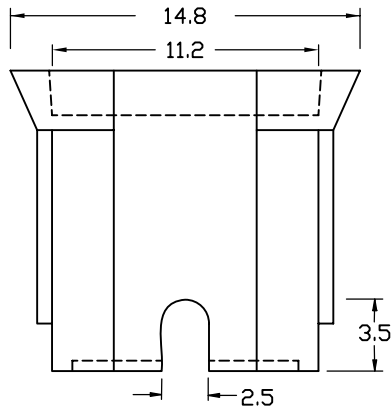
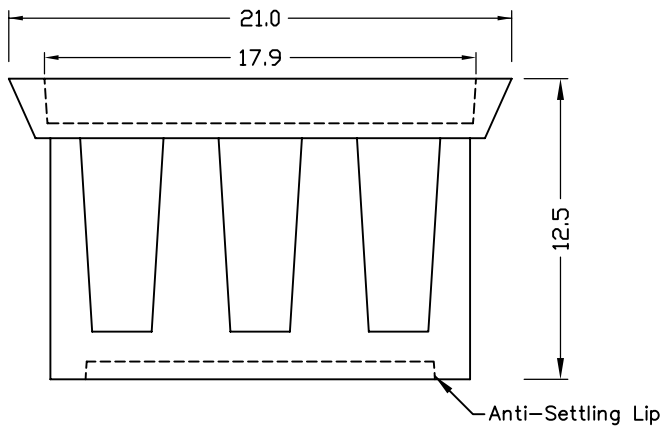


**HDPE Lid w/Rebar**

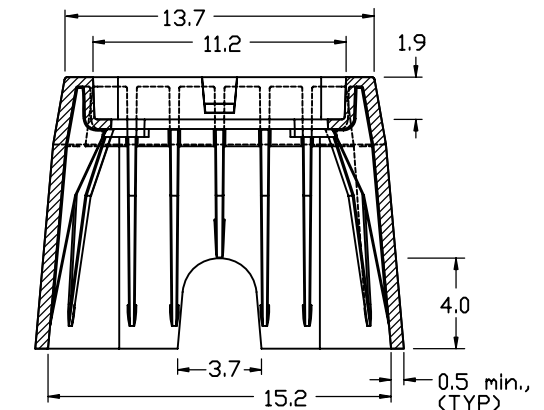
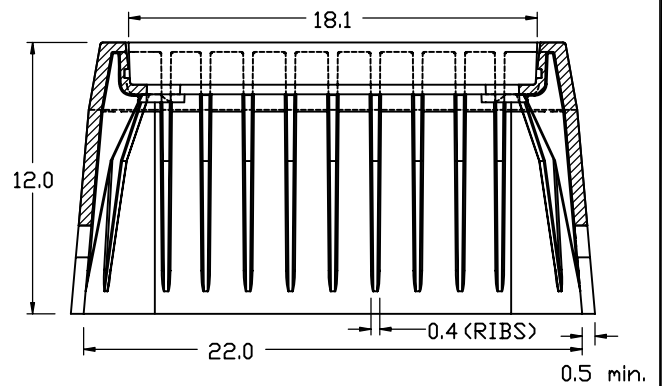


SLOT AND "SNAP" LOCK

**HDPE Lid w/Snap Lock**



**HDPE METER BOX w/LIP**



**HDPE METER BOX w/o LIP**

Units = inches  
(NTS)

**#37 HDPE METER BOX w/HDPE COVER**



TAMPA  
WATER  
DEPARTMENT

APPROVED

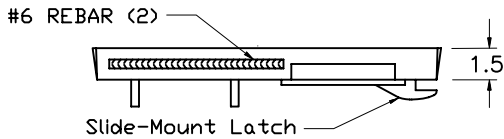
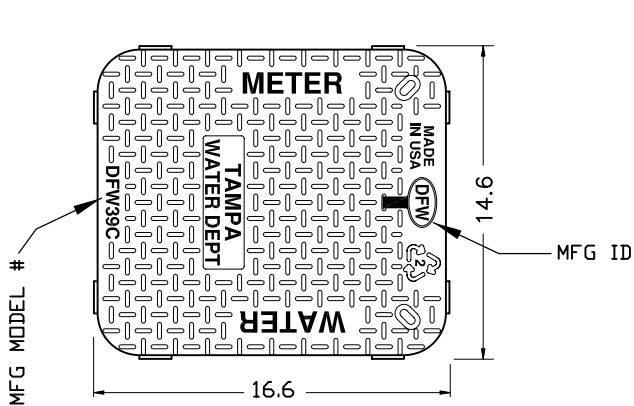
May 2009

REVISED

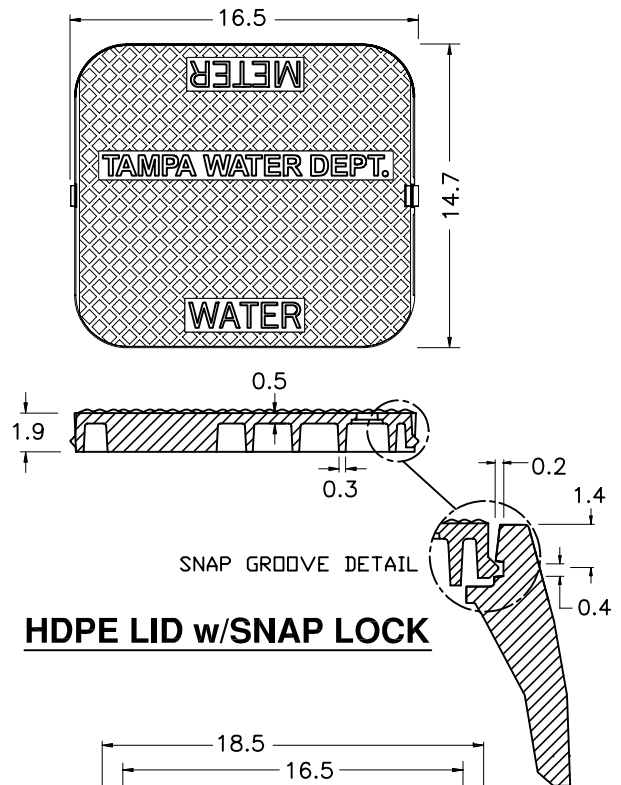
\_\_\_\_\_  
\_\_\_\_\_  
\_\_\_\_\_

3/4" OR 1" SINGLE SERVICE  
HDPE METER BOX

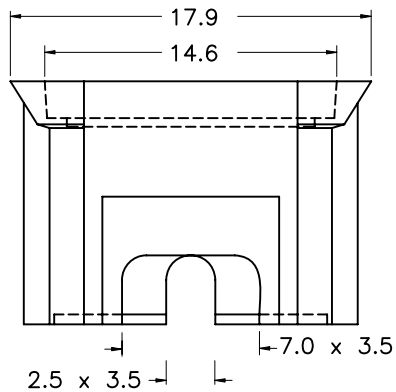
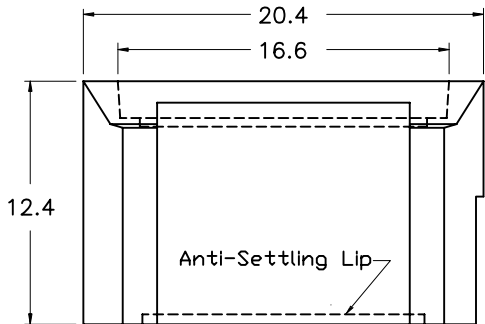
5.10A



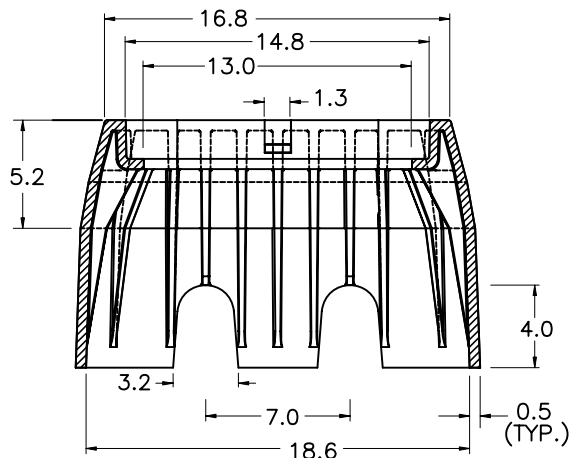
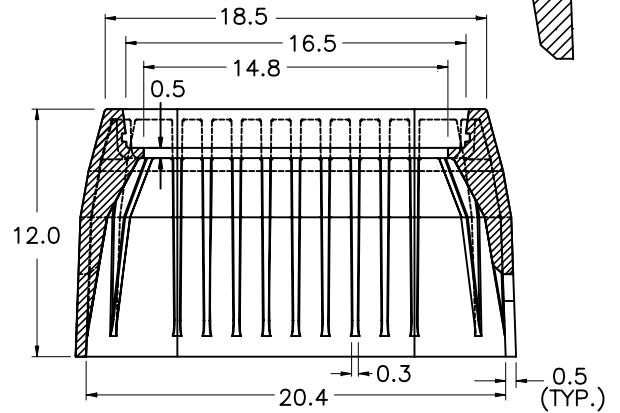
**HDPE LID w/REBAR**



**HDPE LID w/SNAP LOCK**



**HDPE METER BOX w/LIP**



**HDPE METER BOX w/o LIP**

Units = inches  
(NTS)

**"DUAL-H" HDPE METER BOX w/HDPE COVER**



TAMPA  
WATER  
DEPARTMENT

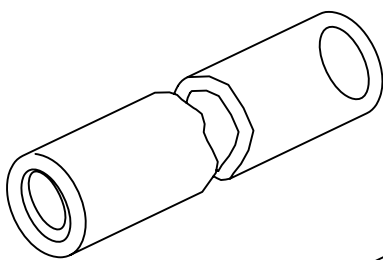
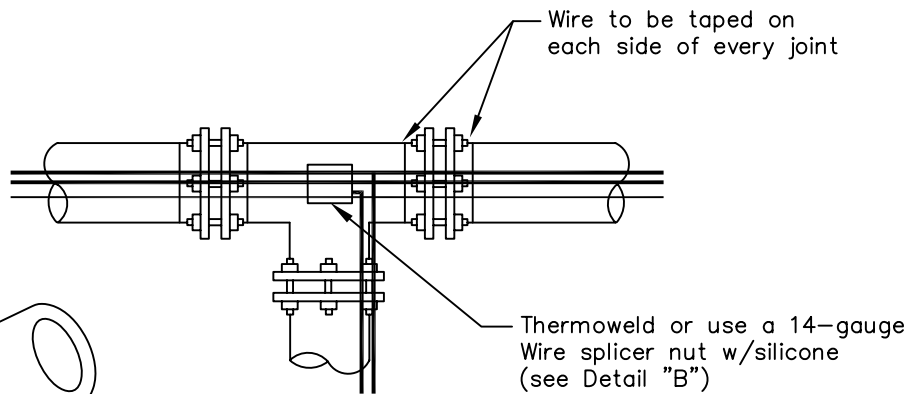
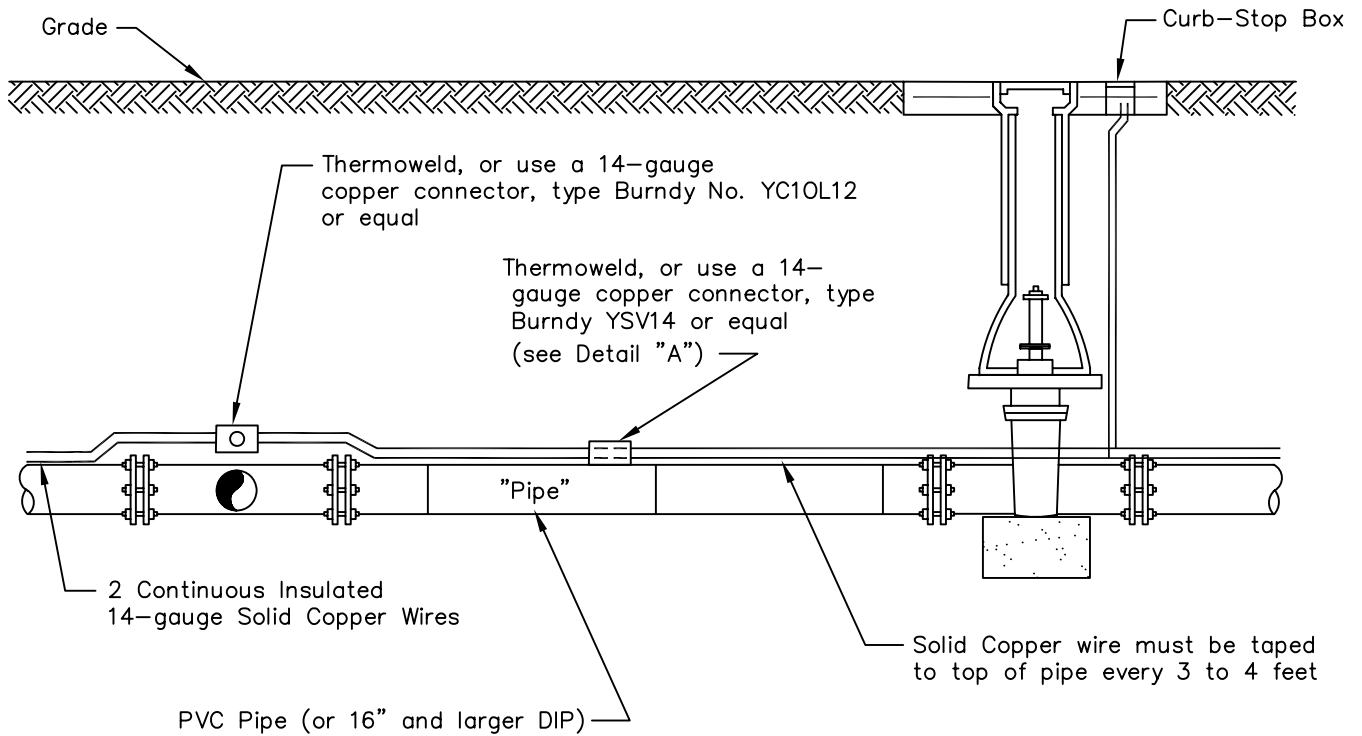
APPROVED  
May 2009

REVISED

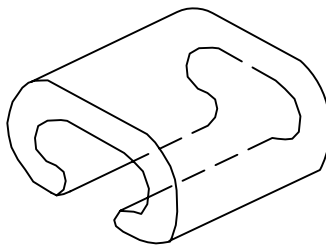
\_\_\_\_\_  
\_\_\_\_\_  
\_\_\_\_\_

3/4" OR 1" DUAL SERVICE  
HDPE METER BOX

5.11A



DETAIL "A"



DETAIL "B"

NOTE:

All connections shall be sealed with a bituminous coating for corrosion protection

NTS



TAMPA  
WATER  
DEPARTMENT

APPROVED  
April 2009

REVISED  
May '09 RNM

DOUBLE COPPER TRACER  
WIRE ON PIPE

7.02