

THE ENCLOSED DOCUMENT IS  
PROVIDED FOR YOUR CONVENIENCE.

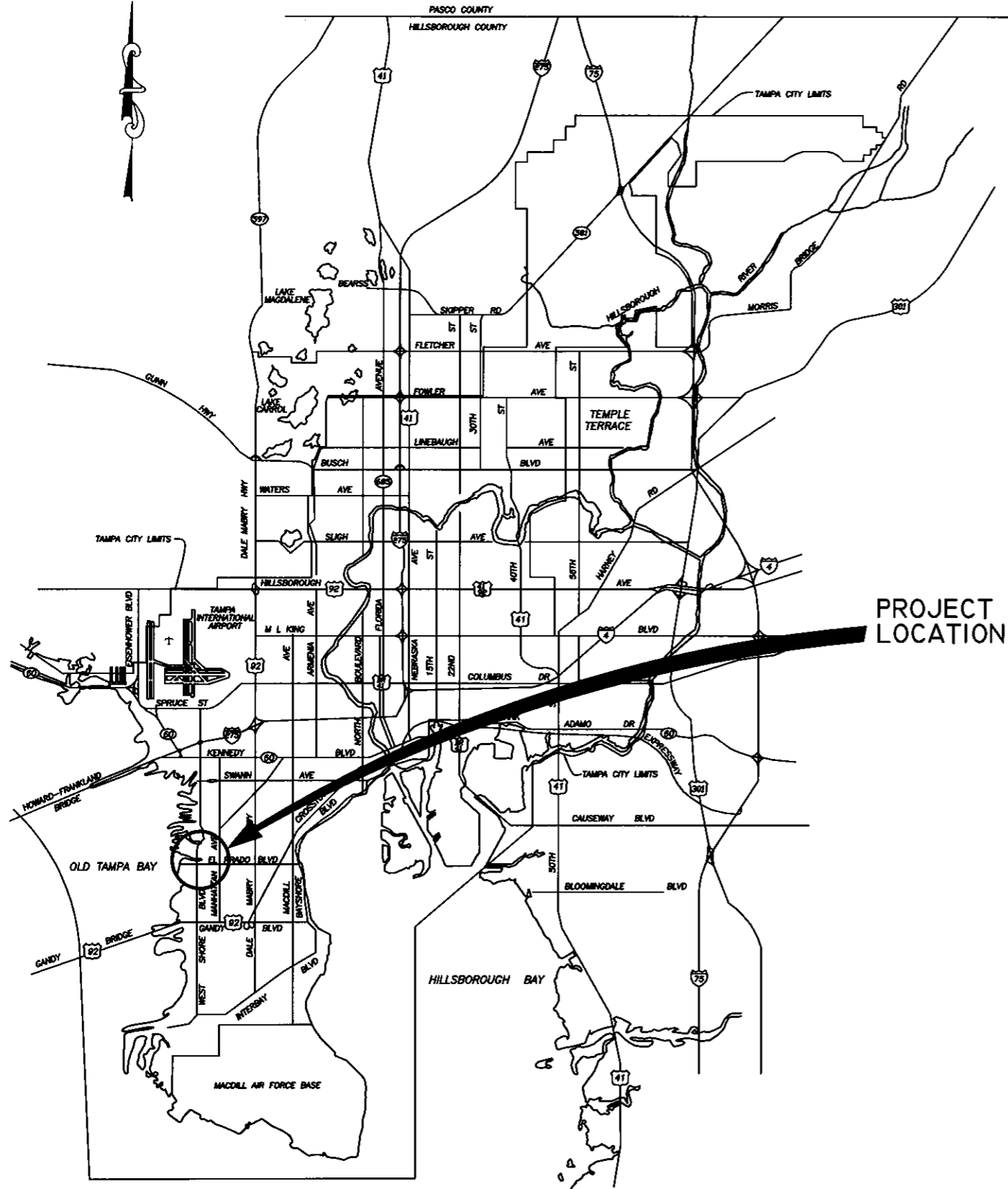
**+REGISTER AS A “PLANHOLDER”  
TO BE LISTED ON THE WEBPAGE,  
TO BE FOUND BY POTENTIAL  
SUB-CONTRACTORS,  
AND TO BE OFFICIALLY NOTIFIED OF  
ADDENDA.**

FOR ASSISTANCE OR  
TO REGISTER  
CONTACT:

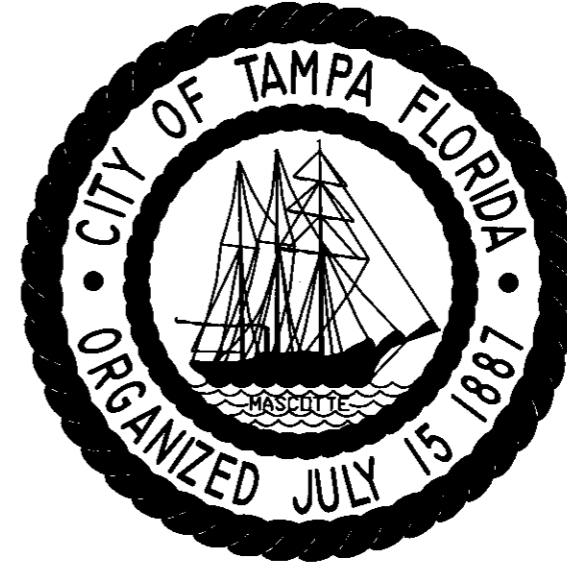
[MAILTO:CONTRACTADMINISTRATION@TAMPAGOV.NET](mailto:CONTRACTADMINISTRATION@TAMPAGOV.NET)

(813)274-8456, FAX 274-8080  
CONTRACT ADMINISTRATION DEPARTMENT  
306 E. JACKSON ST. #280A4N  
TAMPA, FL 33602

LOCATION MAP



CITY of TAMPA



STORMWATER DEPARTMENT

PLANS FOR  
**WESTSHORE BLVD.**  
 STORMWATER IMPROVEMENTS  
 (EUCLID AVENUE TO SPRING LAKE)  
 CONTRACT 9-C-00039

*[Signature]*  
 RICHARD ALFRED HOEL, P.E. #41026  
 DESIGN DIVISION HEAD  
 STORMWATER DEPARTMENT

DES: YB/AH	No.	DATE	REVISIONS
DRN: MZ	3		
CKD:	2		
DATE:	1		

CITY of TAMPA  
 STORMWATER DEPARTMENT

COVER SHEET

**LEGEND**

<b>EX SEWERS</b>	UP to 36" & SMALLER	36" & LARGER
EX FORCE MAIN		
EX SAN SEWER & MANHOLES		
EX STORM SEWER & MANHOLES		
<b>PROP SEWERS</b>		
PROP FORCE MAIN		
PROP SANITARY SEWER & MANHOLES		
PROP STORM SEWER & MANHOLES		
<b>OTHER FEATURES</b>		
RIGHT of WAY LINE		
EDGE of PAVEMENT		
WATER LINE		
GAS LINE		
ELECTRICAL CABLE or DUCT		
TELEPHONE CABLE or DUCT		
TV CABLE		
VALVE		
HYDRANT		
CATCH BASIN, GRATE		
POWER POLE		
TELEPHONE POLE		
GUY POLE		
GUY WIRE		
VALVE VAULT		
WATER METER		
ELECTRICAL MANHOLE or VAULT		
TELEPHONE MANHOLE or VAULT		
TRAFFIC BOX or VAULT		
BUILDING LIMIT		
PROPERTY OWNERSHIP		
FENCE		
CONIFER		
PALM		
OAK		
OTHER		
SHRUB		
HEDGE		
RAILROAD TRACKS		
IRON PIPE		
CONCRETE MONUMENT		
OPEN DITCHES		
EXISTING WYE		
PROPOSED WYE		
CLEAN OUT		

**ABBREVIATIONS**

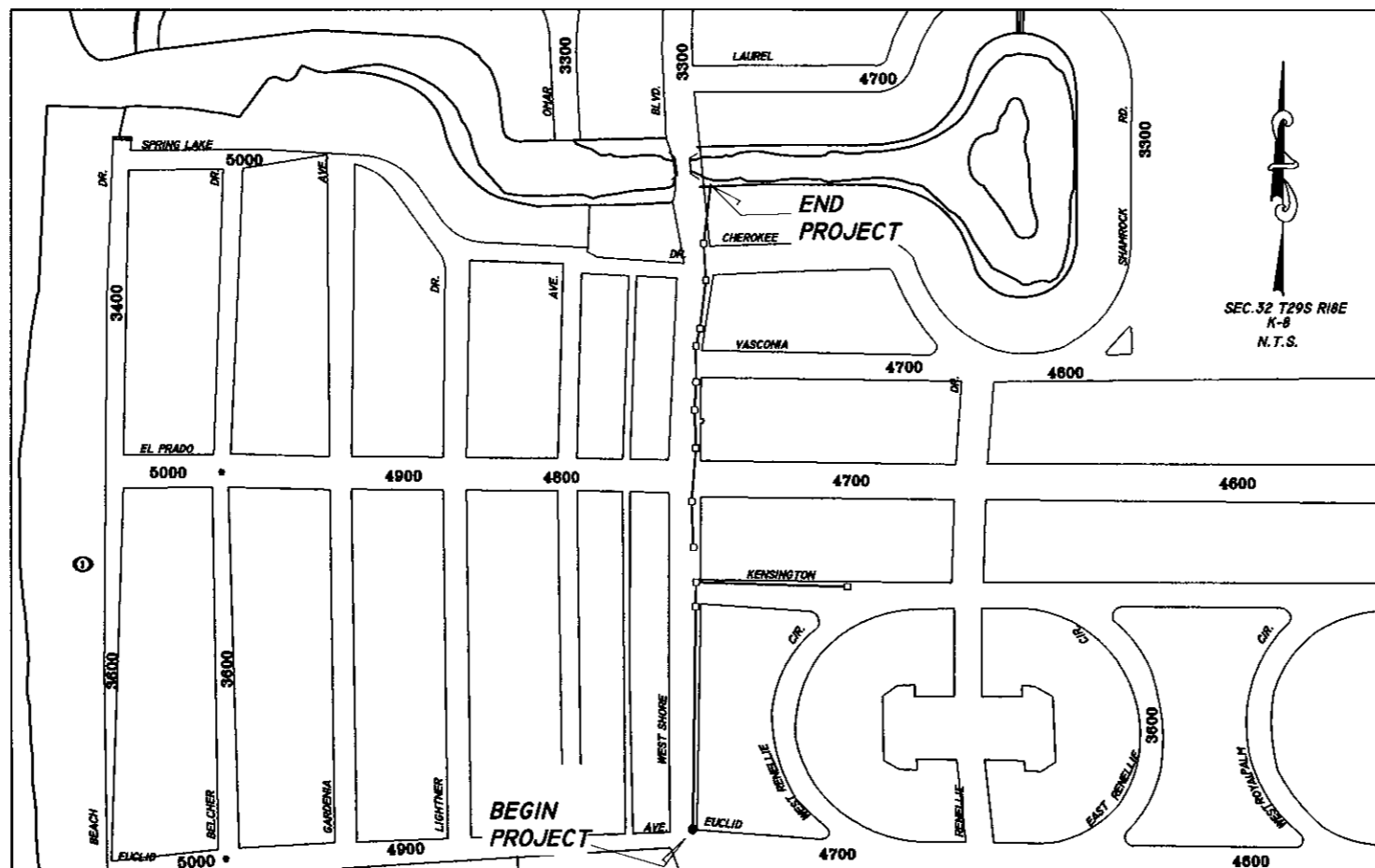
TOP of PIPE	TP
INVERT ELEVATION	IE or INV EL
RIGHT of WAY	R/W
MANHOLE	MH or MH
POLYVINYL CHLORIDE PIPE	PVCP
VITRIFIED CLAY PIPE	VCP
ADVANCED DRAINAGE SYSTEM	ADS
DUCTILE IRON PIPE	DIP
REINFORCED CONCRETE PIPE	RCP
CONCRETE PIPE	CP
APPROXIMATE LOCATION	AL
BENCH MARK	BM
POINT of INTERSECTION	PI

**INDEX**

No.	DESCRIPTION
1	COVER SHEET
2	LEGEND, INDEX, AND NOTES
3-18	STORMWATER PLAN AND PROFILE
19	MISCELLANEOUS DETAILS

**GENERAL NOTES:**

- ALL ELEVATIONS ARE REFERRED TO THE MEAN SEA LEVEL DATUM OF THE U.S.C. AND G.S. (N.O.S.).
- LOCATIONS, ELEVATIONS, AND DIMENSIONS OF THE EXISTING UTILITIES, STRUCTURES, AND OTHER FEATURES ARE SHOWN ACCORDING TO THE BEST INFORMATION AVAILABLE AT THE TIME OF THE PREPARATION OF THESE PLANS BUT DO NOT PURPORT TO BE ABSOLUTELY CORRECT. THE CONTRACTOR SHALL VERIFY THE LOCATIONS, ELEVATIONS, AND DIMENSIONS, OF ALL EXISTING UTILITIES, STRUCTURES, AND OTHER FEATURES AFFECTING HIS WORK PRIOR TO CONSTRUCTION.
- THE CONTRACTOR SHALL CALL SUNSHINE (1-800-432-4770) AT LEAST 72 HOURS PRIOR TO ANY CONSTRUCTION ACTIVITIES.
- WHEN IN CONFLICT, UTILITY POLES, GAS LINES, UNDERGROUND ELECTRIC, TELEPHONE AND OTHER COMMUNICATION CABLES AND CONDUIT WILL BE RELOCATED BY THE RESPECTIVE UTILITY OWNERS AT THEIR OWN EXPENSE AS DIRECTED BY THE ENGINEER.
- PRIOR TO ANY CONSTRUCTION, CONTACT TAMPA ELECTRIC COMPANY (PH 228-4714) FOR EXACT LOCATION OF UNDERGROUND LINES. TECO TO RELOCATE ANY CONFLICTING LINES. RESOLVING CONFLICTS WITH PRIVATE UTILITIES IS THE RESPONSIBILITY OF THE CONTRACTOR AND NO ADDITIONAL PAYMENT WILL BE MADE.
- SPECIAL CARE MUST BE TAKEN TO PROTECT WATER MAINS AND SERVICE LINES DURING CONSTRUCTION, IN NECESSARY PROVIDE SUPPORTS.
- STATIONS GIVEN ARE TO THE CENTER LINE OF THE INLETS AND MANHOLES, AND REFER TO THE SURVEY BASE LINES.
- THE SOLID WASTE DEPARTMENT IS TO BE NOTIFIED PRIOR TO ANY STREET CLOSURES IN THE PROJECT AREA.
- TREE REMOVAL CONTRACTOR IS RESPONSIBLE FOR OBTAINING SITE CLEARING PERMIT PRIOR TO START OF ANY CONSTRUCTION.
- NECESSARY ROOT PRUNING AND TRIMMING OF BRANCHES SHALL BE DONE BY A LICENSED TREE CONTRACTOR.
- THE CONTRACTOR SHALL COMPLY WITH THE PROVISIONS OF THE LATEST "TREE ORDINANCE" OF THE CITY OF TAMPA. THE CONTRACTOR IS REQUIRED TO THLOCATE THE TREES REMOVED AS A PART OF THE NECESSARY CONSTRUCTION INDICATED ON PLANS. HOWEVER, NO TREE SHALL BE REMOVED WITHOUT APPROVAL OF THE ENGINEER. CONTRACTOR SHALL PROTECT TREES TO REMAIN.
- SOD ALL THE DISTURBED AREAS AS DIRECTED BY THE ENGINEER.
- WHERE CONNECTIONS TO EXISTING WALKS AND DRIVES ARE NOT INDICATED ON THE PLANS, PROPER CONNECTIONS SHALL BE MADE AT THE DIRECTION OF THE ENGINEER.
- STREET SIGNS, STREET MARKERS AND R-O-W MARKERS SHALL BE REMOVED AND RELOCATED AS DIRECTED BY THE ENGINEER.
- DRIVEWAYS SHALL BE RECONSTRUCTED IN ACCORDANCE WITH CHAPTER 45, ARTICLE XII OF THE CITY CODE, AS AMENDED BY ORDINANCE NO. 7582-A ADOPTED MARCH 17, 1981. DEVIATION FROM ESTABLISHED STANDARDS SHALL BE APPROVED BY THE CITY TRAFFIC ENGINEER.
- THE CONTRACTOR IS RESPONSIBLE FOR COMPLIANCE WITH ALL CURRENT ENVIRONMENTAL AND PERMIT URLES AND REGULATIONS OF THE CITY, STATE (D.E.R. & SWFWM), TAMPA PORT AUTHORITY, E.P.C. AND OTHERS.
- ALL EXISTING PIPE AND INLETS/MANHOLES TO BE REMOVED FROM STRUCTURE S-1(STA. 1+99) TO OUTFALL(STA 19+84)
- WATER METERS/SERVICE LINES TO BE ADJUSTED AS NECESSARY DURING CONSTRUCTION

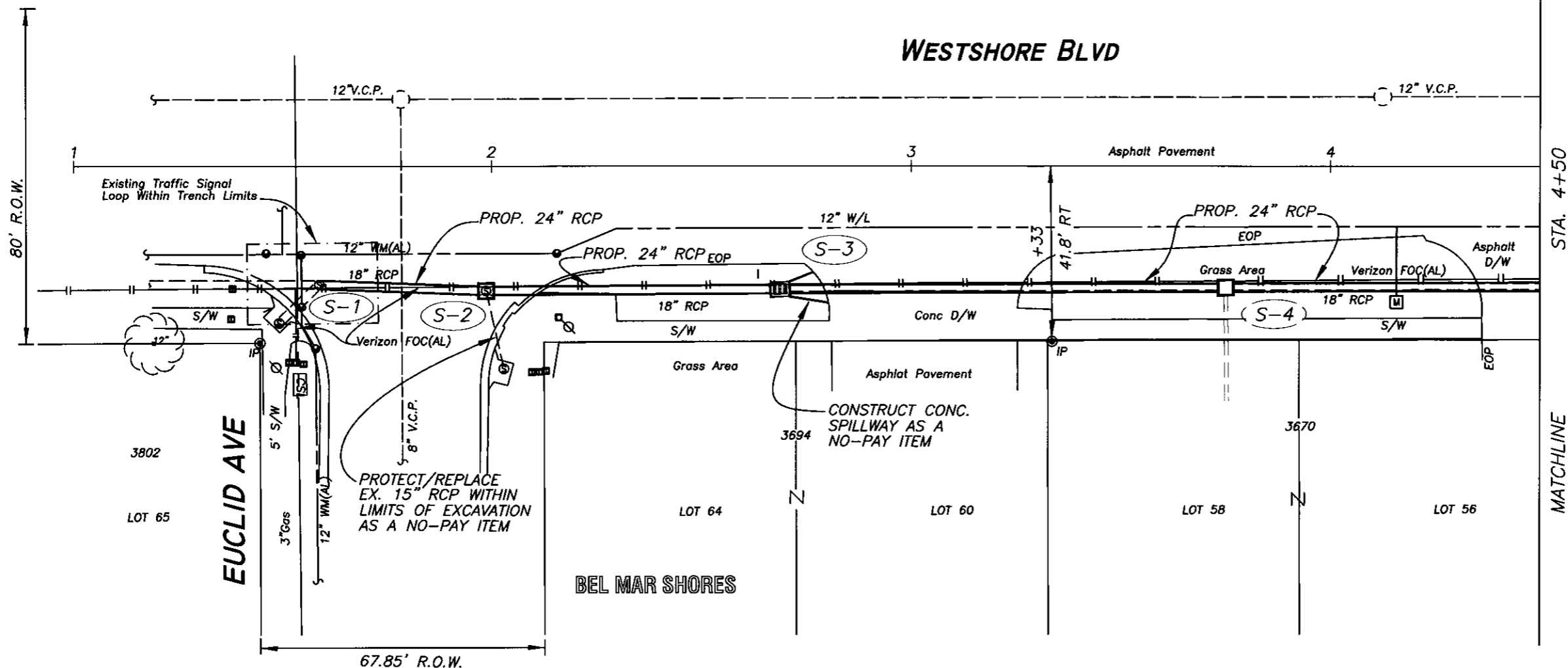


No.	DATE	REVISIONS	No.	DATE	REVISIONS
3			6		
2			5		
1			4		

DES: AH  
 DRN: MP  
 CKD: [Signature]  
 DATE: 6/1/09

**CITY of TAMPA**  
 STORMWATER DEPARTMENT

**WESTSHORE BLVD STORMWATER IMPROVEMENTS**  
 (EUCLID AVE TO SPRING LAKE)  
 INDEX, LEGEND AND GENERAL NOTES



**S-1** STA 1+59, 30'± RT  
 CONNECT TO EXISTING MH  
 24" RCP INV. EL.(N)=1.42  
 Ex. 24" RCP INV. EL.(S)=1.38  
 Ex. 18" RCP INV. EL.(SE)=1.43  
 TOP EL.=5.97±

**S-2** STA 1+99, 30'± RT  
 PROP. FDOT TYPE "P" MH.  
 24" RCP INV. EL.(N)=1.48  
 24" RCP INV. EL.(S)=1.47  
 Ex. 15" RCP INV. EL.(NE)=1.55  
 TOP EL.=5.51±

**S-3** STA 2+69, 29'± RT  
 PROP. GRATE INLET TYPE "T"  
 24" RCP INV. EL.(N)=1.58  
 24" RCP INV. EL.(S)=1.57  
 TOP EL.=5.40±

**S-4** STA 3+75, 29'± RT  
 PROP. FDOT TYPE "P" MH.  
 24" RCP INV. EL.(N)=1.73  
 24" RCP INV. EL.(S)=1.72  
 Ex. 10" RCP INV. EL.(E)=UNKNOWN  
 TOP EL.=5.51±

C:\Program Files\Acad 2008\Drawings\5576(Westshore B)

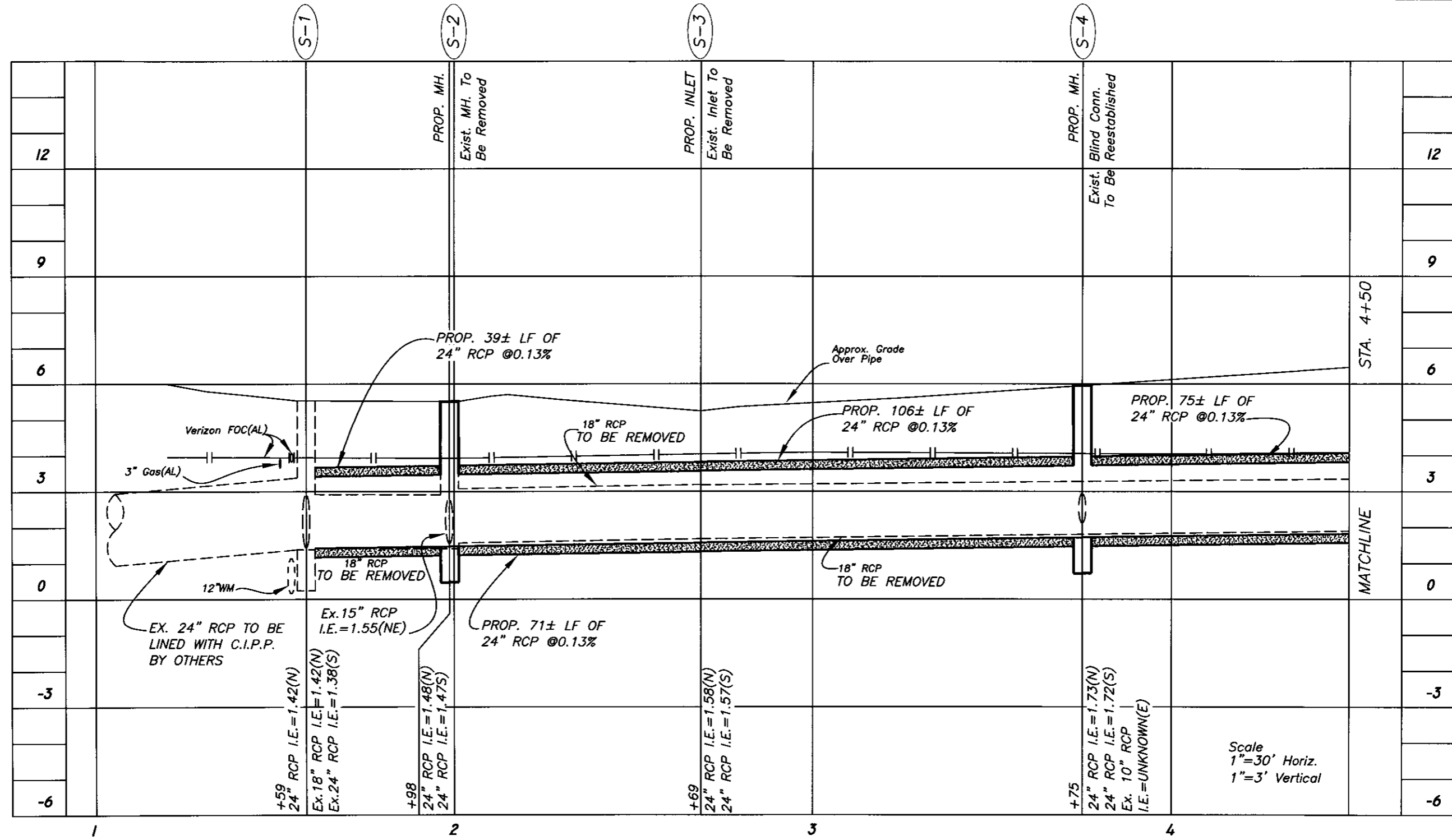
No.	DATE	REVISIONS	No.	DATE	REVISIONS
3			6		
2			5		
1			4		

DES: YB/AH  
 DRN: MZ  
 CKD:  
 DATE:

**CITY of TAMPA**  
 STORMWATER DEPARTMENT

**WESTSHORE BLVD STORMWATER IMPROVEMENTS**  
 (EUCLID AVE TO SPRING LAKE)

W.O. 5576  
 SHEET  
**3**  
 OF 19



C:\Program Files\Acad 2008\Drawings\5576(Westshore Bl)

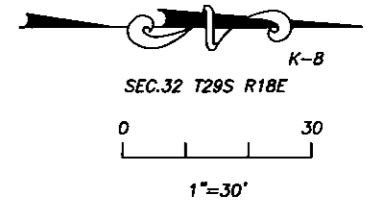
No.	DATE	REVISIONS	No.	DATE	REVISIONS
3			6		
2			5		
1			4		

DES: YB/AH  
 DRN: MP  
 CKD: AH  
 DATE: 6-30-09

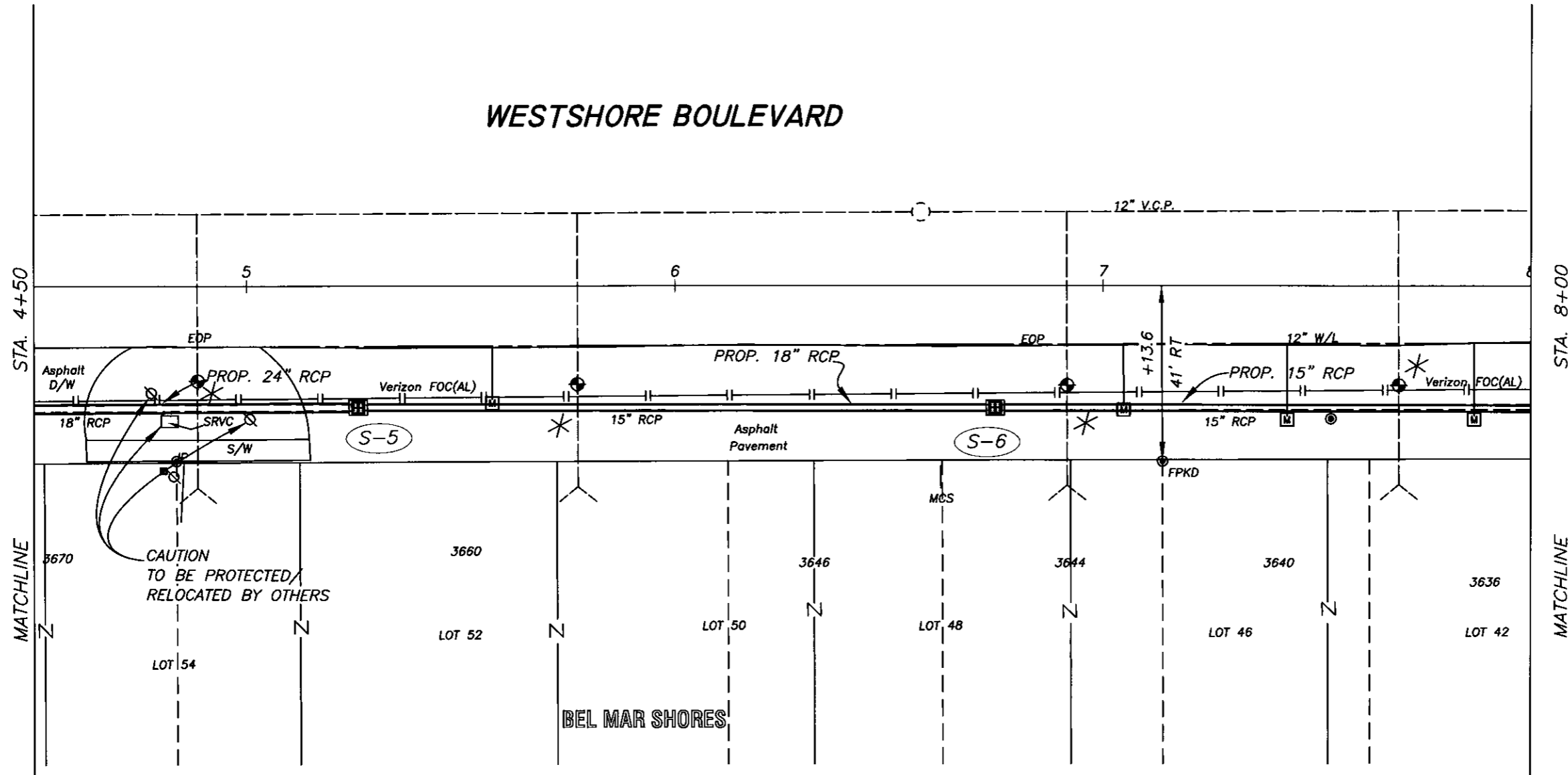
**CITY of TAMPA**  
 STORMWATER DEPARTMENT

**WESTSHORE BLVD STORMWATER IMPROVEMENTS**  
 (EUCLID AVE TO SPRING LAKE)

W.O. 5576  
 SHEET  
**4**  
 OF 19



WESTSHORE BOULEVARD



**S-5** STA 5+26, 28'± RT  
 PROP. GRATE INLET TYPE "T"  
 TOP EL.=5.50±  
 24" RCP INV. EL.(S)=1.92  
 18" RCP INV. EL.(N)=1.93

**S-6** STA 6+75, 28'± RT  
 PROP. GRATE INLET TYPE "T"  
 TOP EL.=6.03±  
 12"X18" ERCP INV. EL.(N)=2.12  
 18" RCP INV. EL.(S)=2.12

\* REPLACE 6" VCP WITH  
 C-900 DR18 GREEN PVC  
 WITHIN LIMITS OF EXCAVATION.  
 CONNECT TO VCP WITH  
 FERNCO ADAPTERS. MAINTAIN  
 CONTINUOUS SEWER SERVICE.

C:\Program Files\Acad 2008\Drawings\5576(Westshore Bl)

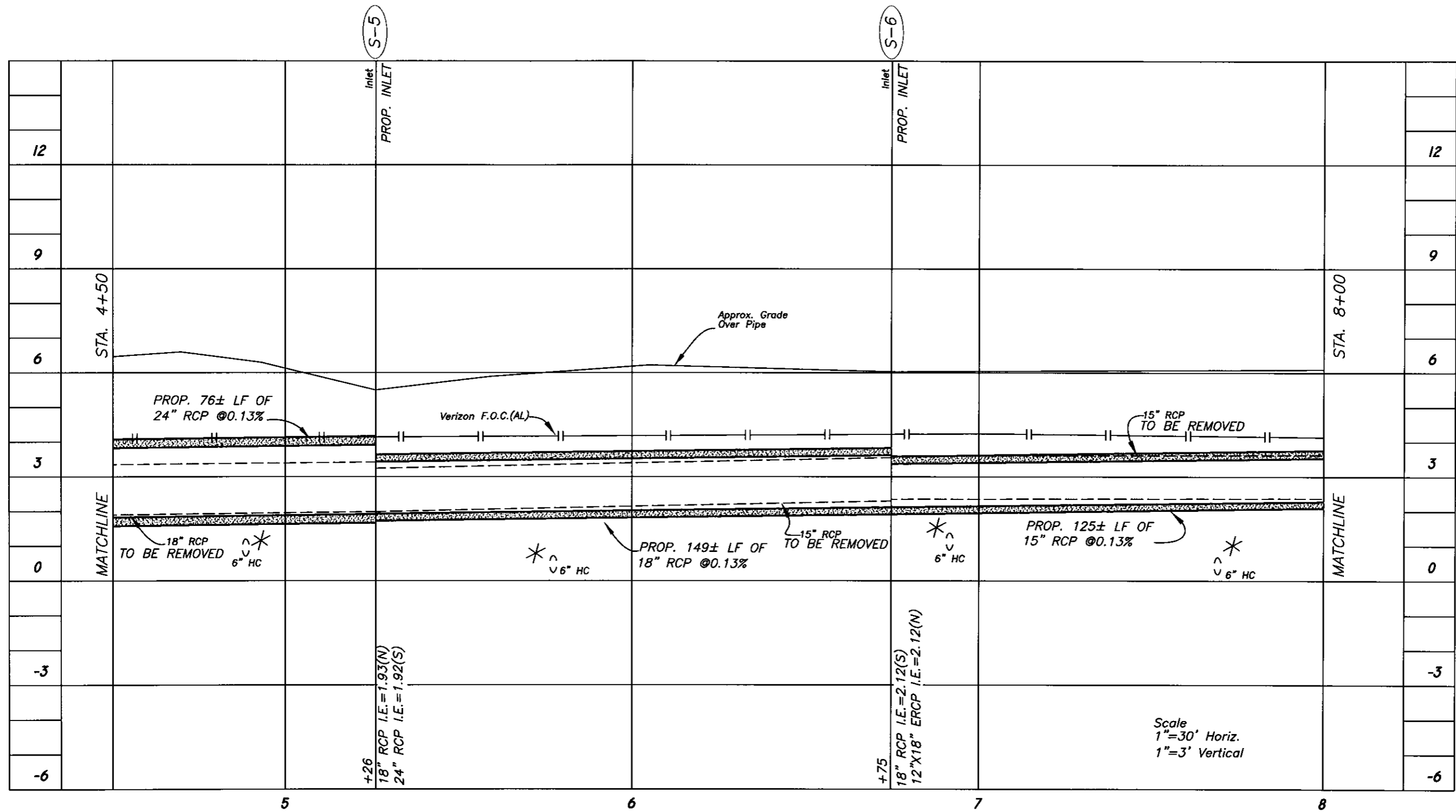
No.	DATE	REVISIONS	No.	DATE	REVISIONS
3			6		
2			5		
1			4		

DES: YB/AH  
 DRN: MP  
 CKD: AH  
 DATE: 6/23/09

CITY of TAMPA  
 STORMWATER DEPARTMENT

WESTSHORE BLVD STORMWATER IMPROVEMENTS  
 (EUCLID AVE TO SPRING LAKE)

W.O. 5576  
 SHEET  
**5**  
 OF 19



Scale  
 1"=30' Horiz.  
 1"=3' Vertical

\*Based on vacuum excavation  
 at pipe crossing

C:\Program Files\Acad 2008\Drawings\5576(Westshore Bl)

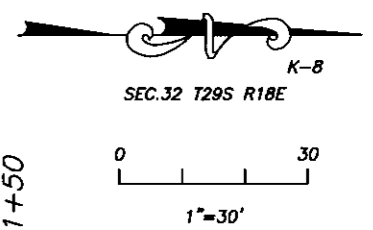
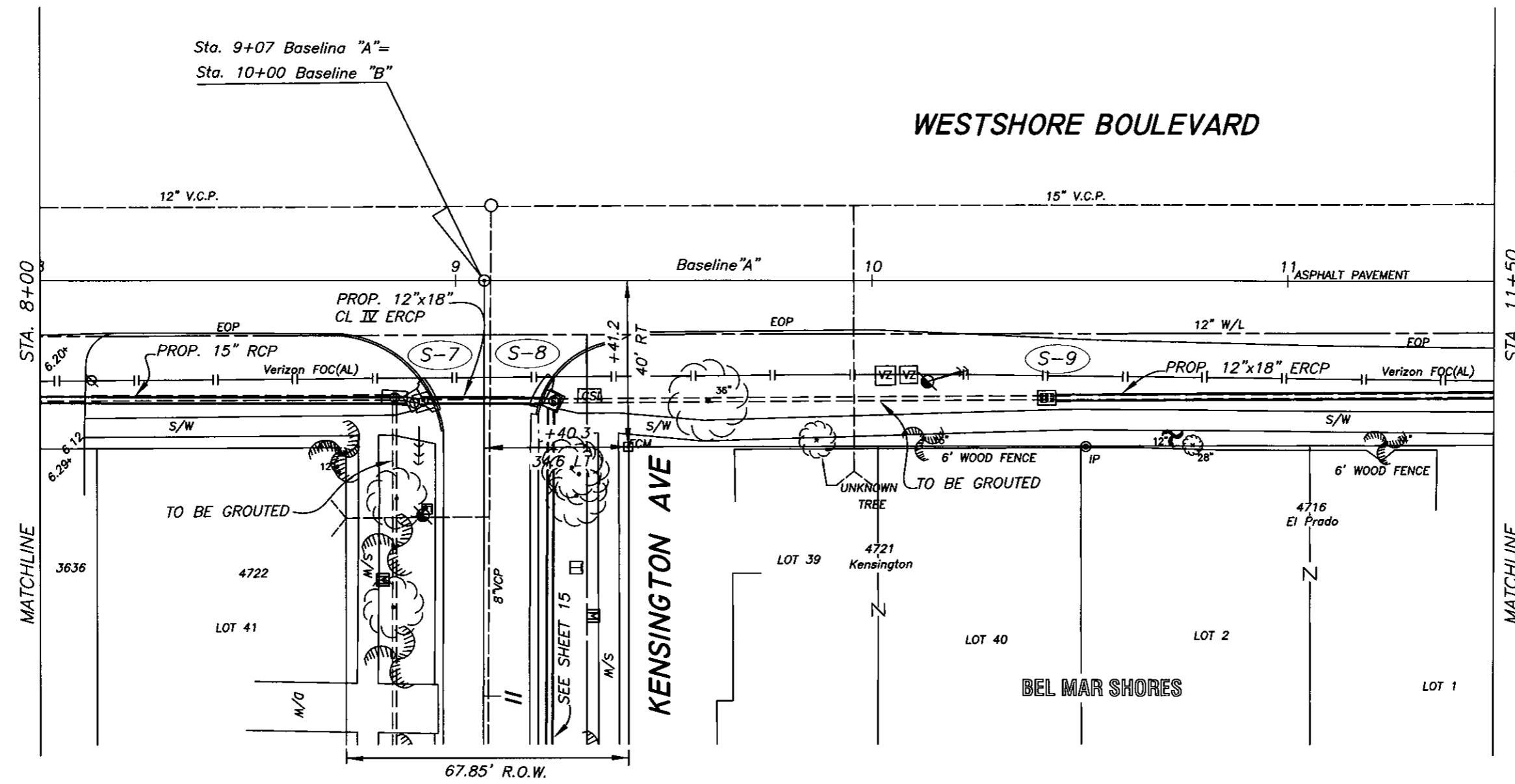
No.	DATE	REVISIONS	No.	DATE	REVISIONS
3			6		
2			5		
1			4		

DES: YB/AH  
 DRN: MP  
 CKD: A.A.  
 DATE: 6/20/09

**CITY of TAMPA**  
 STORMWATER DEPARTMENT

**WESTSHORE BLVD STORMWATER IMPROVEMENTS**  
 (EUCLID AVE TO SPRING LAKE)

W.O. 5576  
 SHEET  
**6**  
 OF 19



**S-7** STA 8+90, 29'± RT  
 PROP. CURB INLET TYPE "BR-2"  
 TOP EL.=6.03±  
 12"x18" ERCP INV. EL.(N&S)=2.39

**S-9** STA 10+42, 28'± RT  
 PROP. GRATE INLET TYPE "T"  
 TOP EL.=5.84±  
 12"x18" ERCP INV. EL.(N)=3.23

**S-8** STA 9+24, 29'± RT  
 PROP. CURB INLET TYPE "BR-2"  
 TOP EL.=5.48±  
 12"x18" ERCP INV. EL.(S&E)=2.45

C:\Program Files\Acad 2008\Drawings\5576(Westshore Bl)

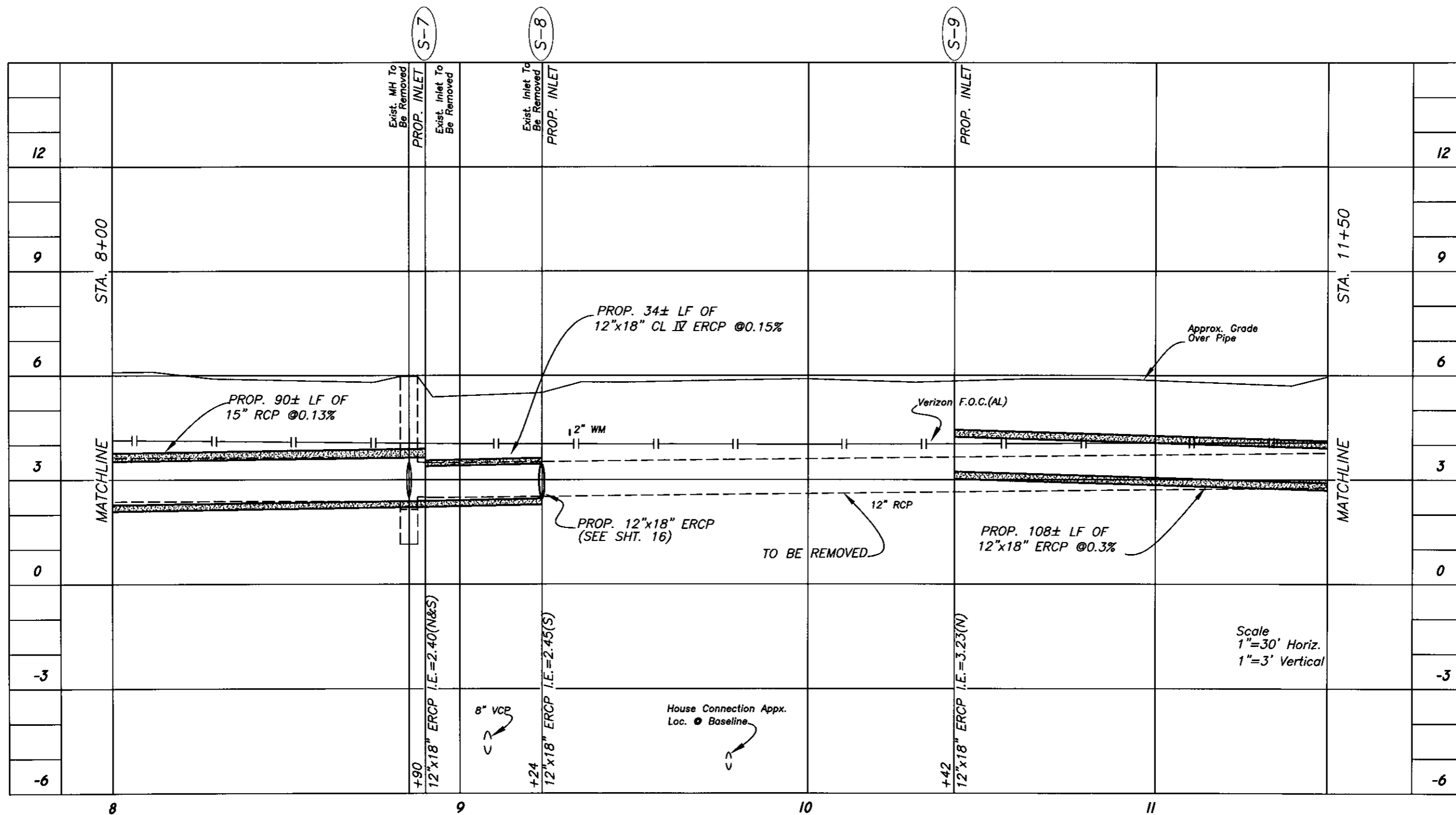
No.	DATE	REVISIONS	No.	DATE	REVISIONS
3			6		
2			5		
1			4		

DES: YB/AH  
 DRN: MP  
 CKD: AH  
 DATE: 6/30/09

**CITY of TAMPA**  
 STORMWATER DEPARTMENT

**WESTSHORE BLVD STORMWATER IMPROVEMENTS**  
 (EUCLID AVE TO SPRING LAKE)

W.O. 5576  
 SHEET  
**7**  
 OF 19



C:\Program Files\Acad 2008\Drawings\5576(Westshore Bl)

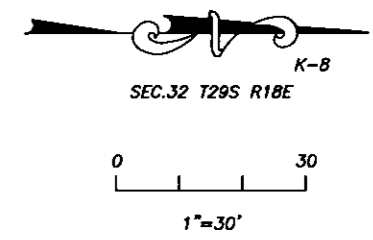
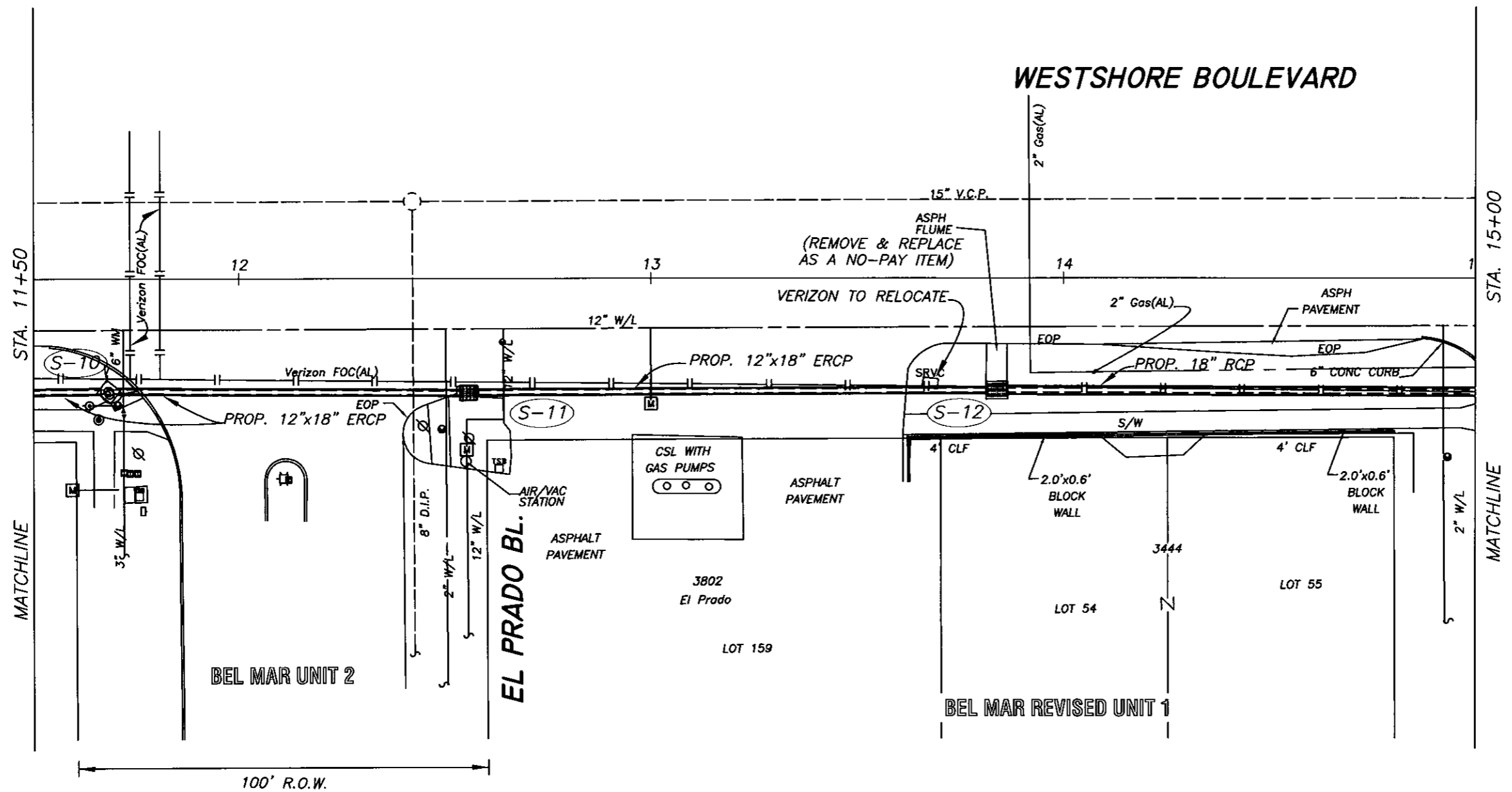
No.	DATE	REVISIONS	No.	DATE	REVISIONS
3			6		
2			5		
1			4		

DES: YB/AH  
 DRN: MP  
 CKD: *Att*  
 DATE: 6/20/09

**CITY of TAMPA**  
 STORMWATER DEPARTMENT

**WESTSHORE BLVD STORMWATER IMPROVEMENTS**  
 (EUCLID AVE TO SPRING LAKE)

W.O. 5576  
 SHEET  
**8**  
 OF 19



**S-10** STA 11+69, 27'± RT  
 PROP. CURB INLET TYPE "BR-2"  
 TOP EL.=6.40±  
 12"X18" ERCP INV. EL.(S)=2.85  
 12"X18" ERCP INV. EL.(N)=2.84

**S-12** STA 13+84, 27'± RT  
 PROP. GRATE INLET TYPE "E"  
 TOP EL.=5.80±  
 12"X18" ERCP INV. EL.(S)=2.18  
 18" RCP INV. EL.(N)=2.17

**S-11** STA 12+56, 28'± RT  
 PROP. GRATE INLET TYPE "T"  
 TOP EL.=5.73±  
 12"X18" ERCP INV. EL.(S)=2.58  
 12"X18" ERCP INV. EL.(N)=2.57

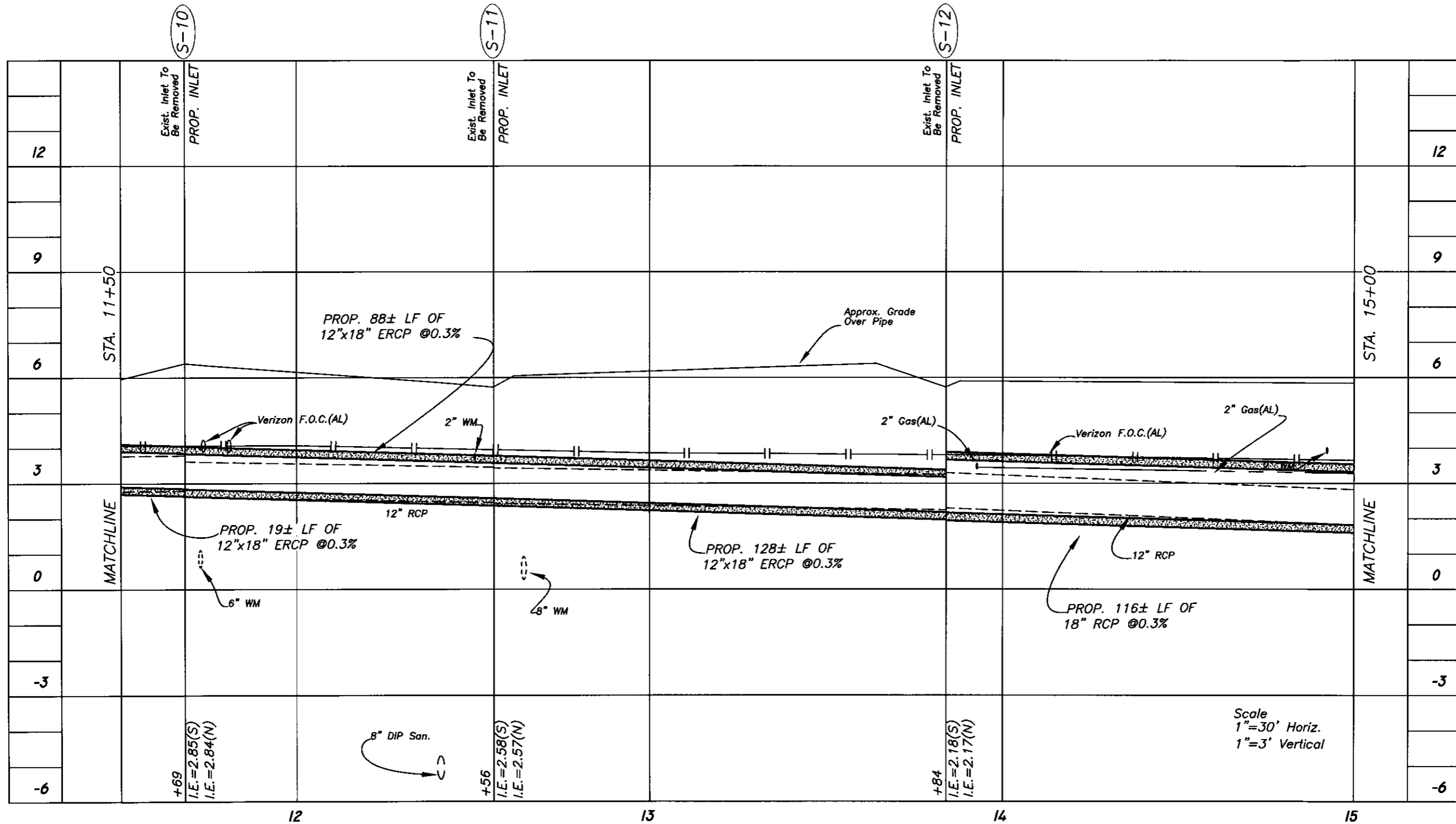
C:\Program Files\Acad 2008\Drawings\5576(Westshore Bl)

No.	DATE	REVISIONS	No.	DATE	REVISIONS
3			6		
2			5		
1			4		

DES: YB/AH  
 DRN: MP  
 CKD: AH  
 DATE: 6/20/09

**CITY of TAMPA**  
 STORMWATER DEPARTMENT

**WESTSHORE BLVD STORMWATER IMPROVEMENTS**  
 (EUCLID AVE TO SPRING LAKE)



Scale  
 1"=30' Horiz.  
 1"=3' Vertical

C:\Program Files\Acad 2008\Drawings\5576(Westshore BI)

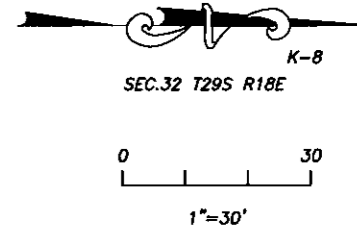
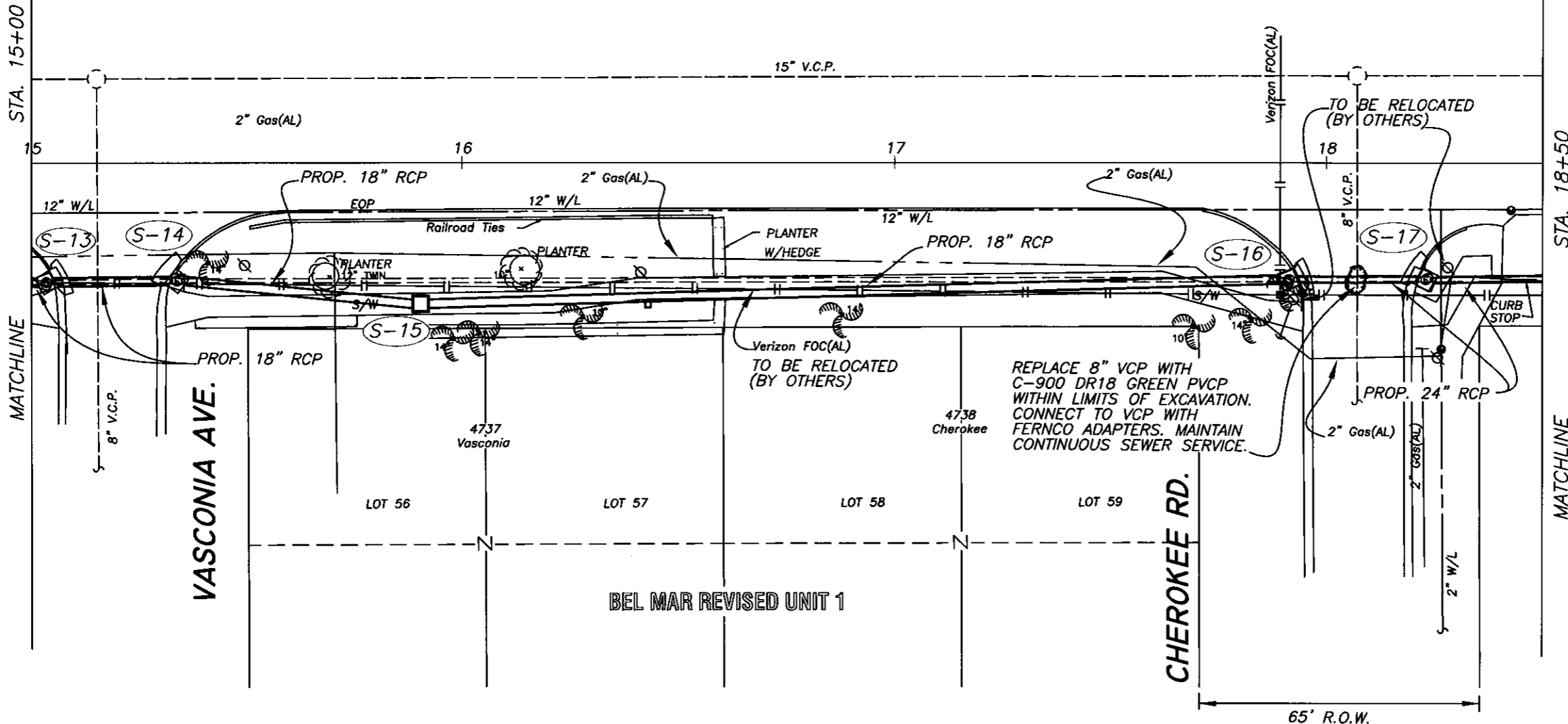
No.	DATE	REVISIONS	No.	DATE	REVISIONS
3			6		
2			5		
1			4		

DES: YB/AH  
 DRN: MP  
 CKD: AHT  
 DATE: 12/30/09

**CITY of TAMPA**  
 STORMWATER DEPARTMENT

**WESTSHORE BLVD STORMWATER IMPROVEMENTS**  
 (EUCLID AVE TO SPRING LAKE)

WESTSHORE BOULEVARD



**S-13** STA 15+03, 28'± RT  
 PROP. CURB INLET TYPE "BR-2"  
 TOP EL.=5.84±  
 18" RCP INV. EL.(S)=1.81  
 18" RCP INV. EL.(N)=1.80

**S-15** STA 15+90, 33'± RT  
 PROP. FDOT TYPE "P" MH.  
 TOP EL.=6.50±  
 18" RCP INV. EL.(S)=1.52  
 18" RCP INV. EL.(N)=1.51

**S-17** STA 18+23, 27'± RT  
 PROP. CURB INLET TYPE "BR-2"  
 TOP EL.=5.58±  
 19"X30" ERCP INV. EL.(S)=0.79  
 19"X30" ERCP INV. EL.(N)=0.78

**S-14** STA 15+34, 27'± RT  
 PROP. CURB INLET TYPE "BR-2"  
 TOP EL.=5.80±  
 18 RCP INV. EL.(S)=1.70  
 18 RCP INV. EL.(N)=1.69

**S-16** STA 17+91, 27'± RT  
 PROP. CURB INLET TYPE "BR-2"  
 TOP EL.=5.53±  
 18" RCP INV. EL.(S)=0.90  
 24" RCP INV. EL.(N)=0.89

C:\Program Files\Acad 2008\Drawings\5576(Westshore BI)

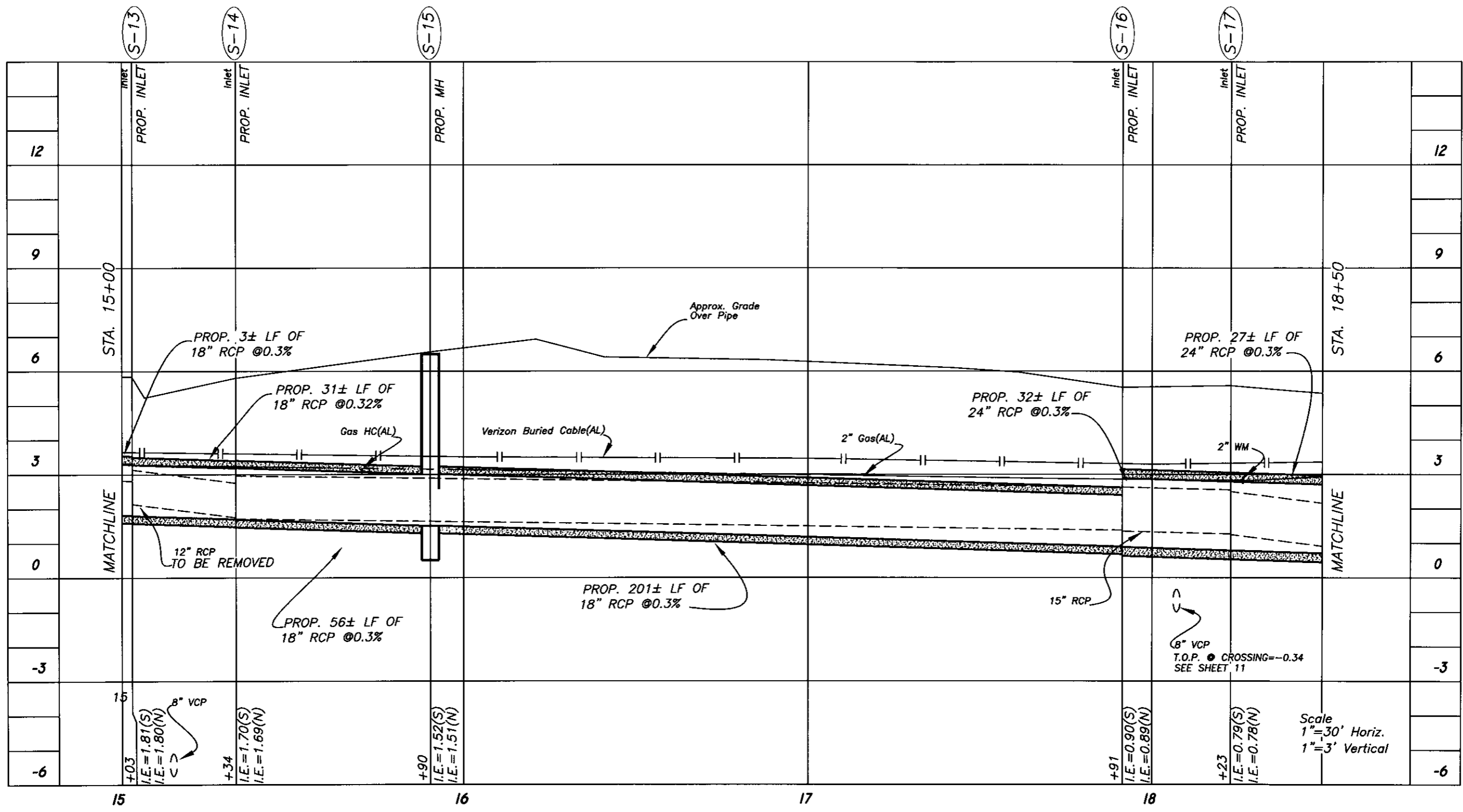
No.	DATE	REVISIONS	No.	DATE	REVISIONS
3			6		
2			5		
1			4		

DES: YB/AH  
 DRN: MP  
 CKD: AH  
 DATE: 6-30-09

CITY of TAMPA  
 STORMWATER DEPARTMENT

WESTSHORE BLVD STORMWATER IMPROVEMENTS  
 (EUCLID AVE TO SPRING LAKE)

W.O. 5576  
 SHEET  
 11  
 OF 19



C:\Program Files\Acad 2008\Drawings\5576(Westshore Bl)

No.	DATE	REVISIONS	No.	DATE	REVISIONS
3			6		
2			5		
1			4		

DES: YB/AH  
 DRN: MP  
 CKD: AH  
 DATE: 6-30-09

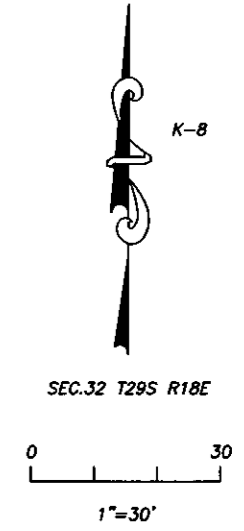
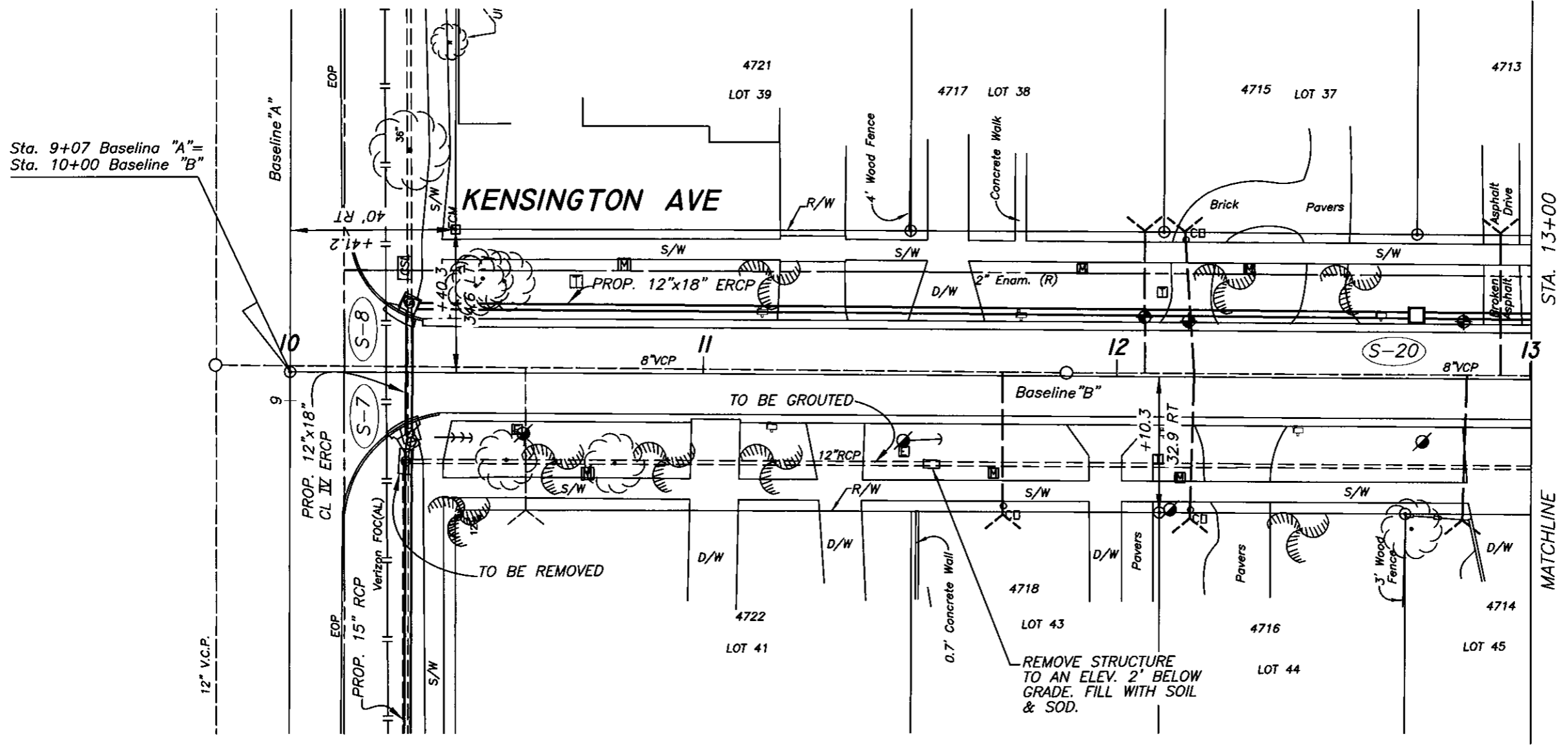
**CITY of TAMPA**  
 STORMWATER DEPARTMENT

**WESTSHORE BLVD STORMWATER IMPROVEMENTS**  
 (EUCLID AVE TO SPRING LAKE)

W.O. 5576  
 SHEET  
**12**  
 OF 19







(S-20) STA 12+72.6, 15'± LT BASELINE "B"  
 PROP. STND. MH TYPE "P"  
 TOP EL.=5.50±  
 12"x18" ERCP INV. EL.(E&W)=2.72

C:\Program Files\Acad 2008\Drawings\5576(Westshore Bl)

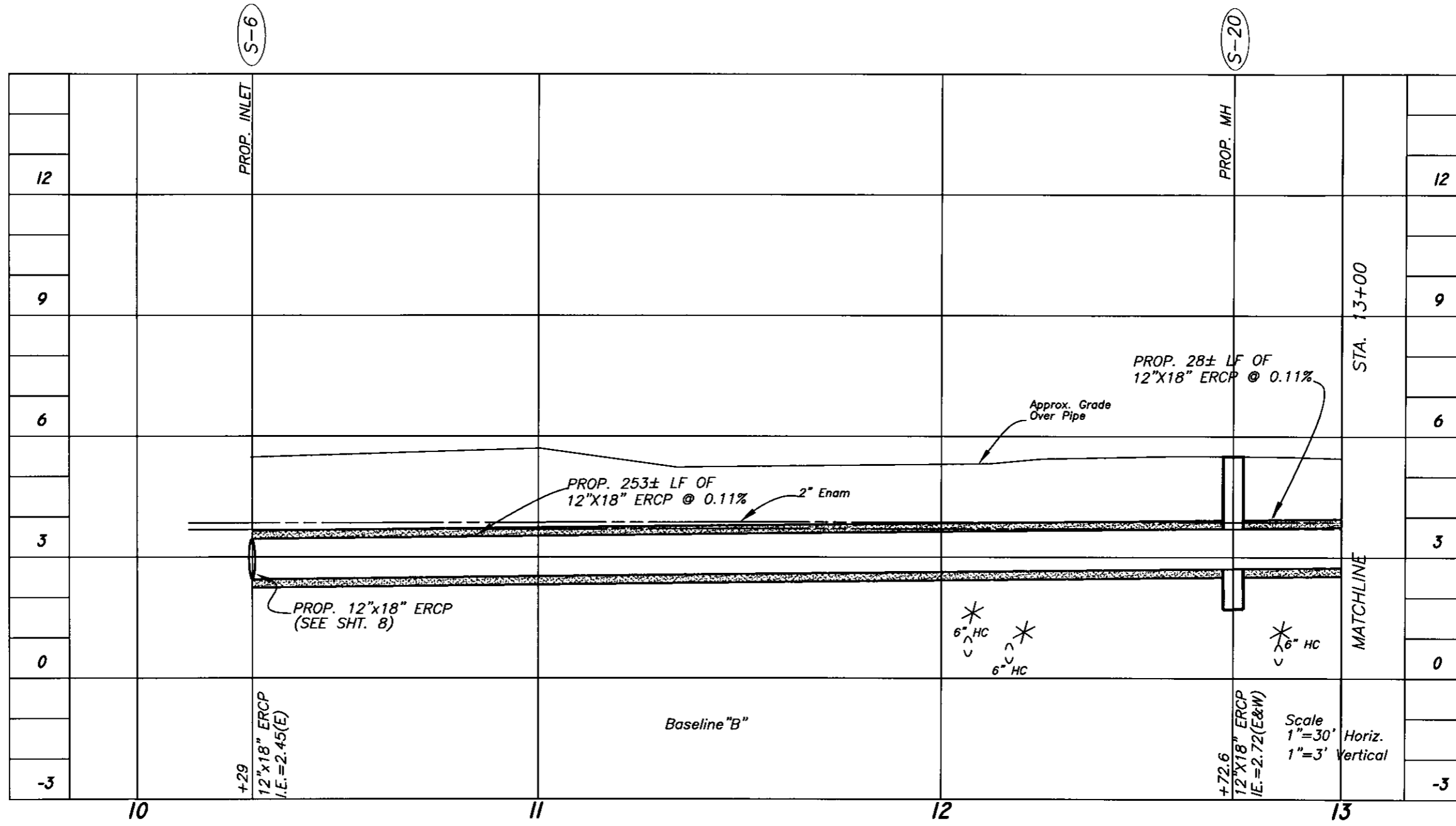
No.	DATE	REVISIONS	No.	DATE	REVISIONS
3			6		
2			5		
1			4		

DES: YB/AH  
 DRN: MP  
 CKD: AH  
 DATE: 6/30/09

**CITY of TAMPA**  
 STORMWATER DEPARTMENT

**WESTSHORE BLVD STORMWATER IMPROVEMENTS**  
 (EUCLID AVE TO SPRING LAKE)

W.O. 5576  
 SHEET  
**15**  
 OF 19



\*Based on vacuum excavation at pipe crossing

C:\Program Files\Acad 2008\Drawings\5576(Westshore Bl)

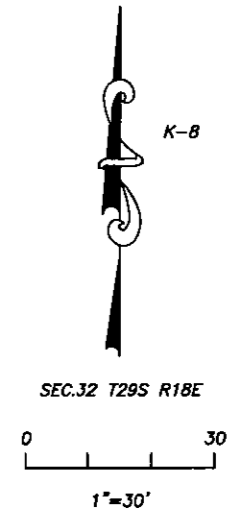
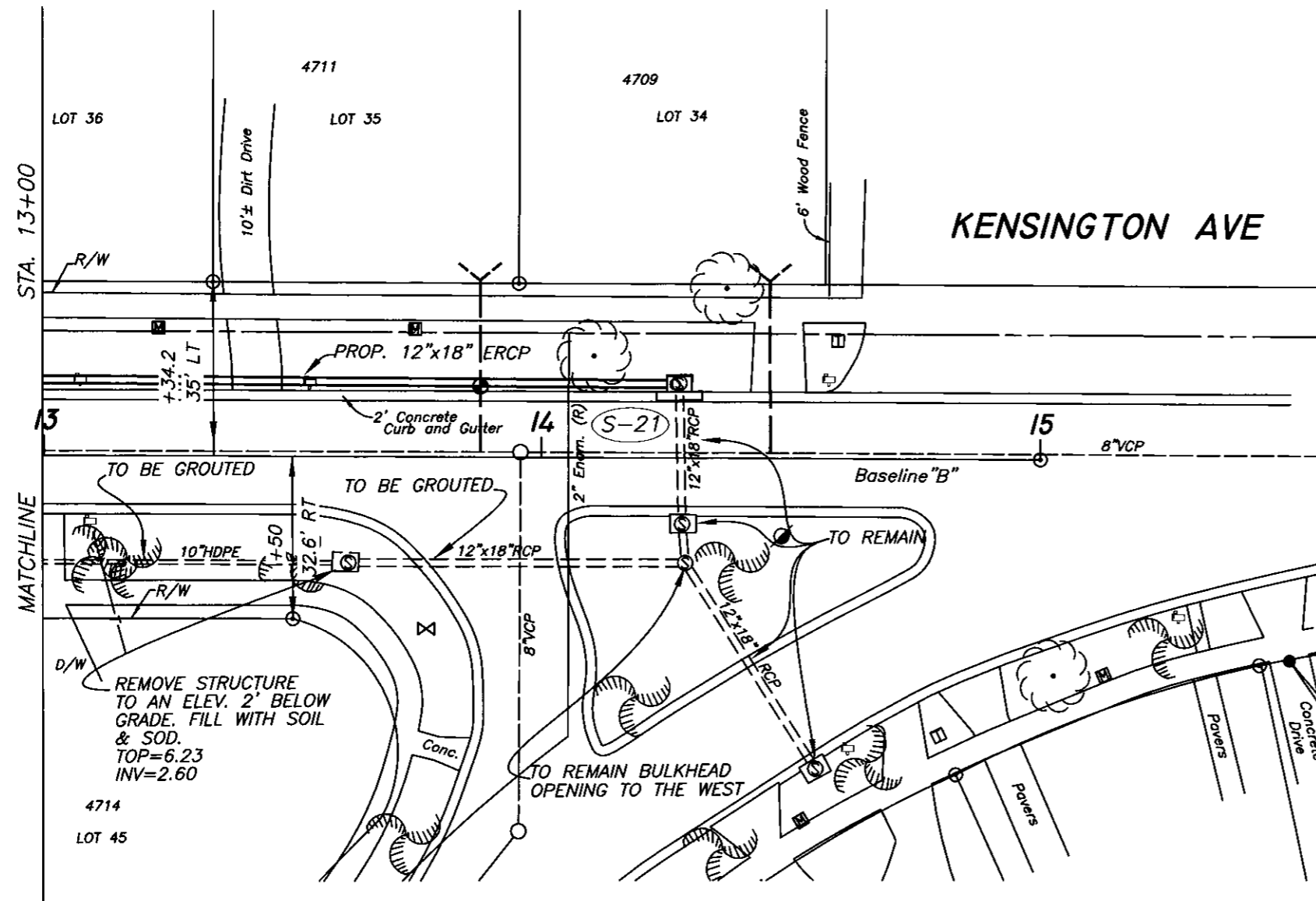
No.	DATE	REVISIONS	No.	DATE	REVISIONS
3			6		
2			5		
1			4		

DES: YB/AH  
 DRN: MP  
 CKD: AH  
 DATE: 6/20/09

**CITY of TAMPA**  
 STORMWATER DEPARTMENT

**WESTSHORE BLVD STORMWATER IMPROVEMENTS**  
 (EUCLID AVE TO SPRING LAKE)

W.O. 5576  
 SHEET  
**16**  
 OF 19



(S-21) STA 14+31, 15'± LT, BASELINE "B"  
 PROP. CURB INLET TYPE "1"  
 TOP EL.=6.10±  
 12"x18" ERCP INV. EL.(W)=2.88  
 12"x18" ERCP INV. EL.(S)=3.06

C:\Program Files\Acad 2008\Drawings\5576(Westshore Bl)

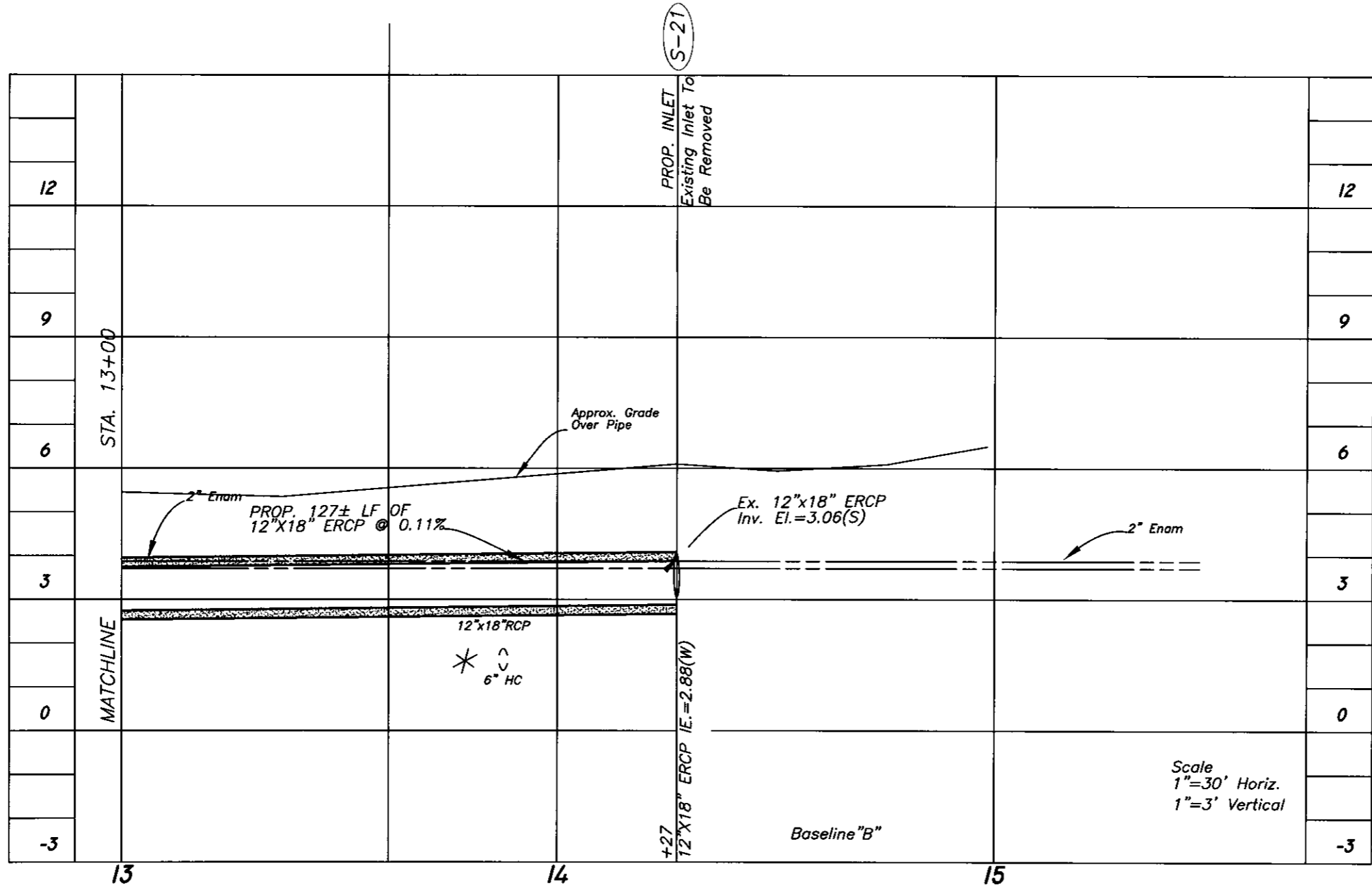
No.	DATE	REVISIONS	No.	DATE	REVISIONS
3			6		
2			5		
1			4		

DES: YB/AH  
 DRN: MP  
 CKD: AIT  
 DATE: 6-30-04

**CITY of TAMPA**  
 STORMWATER DEPARTMENT

**WESTSHORE BLVD STORMWATER IMPROVEMENTS**  
 (EUCLID AVE TO SPRING LAKE)

W.O. 5576  
 SHEET  
**17**  
 OF 19



\*Based on vacuum excavation at pipe crossing

C:\Program Files\Acad 2008\Drawings\5576(Westshore Bl)

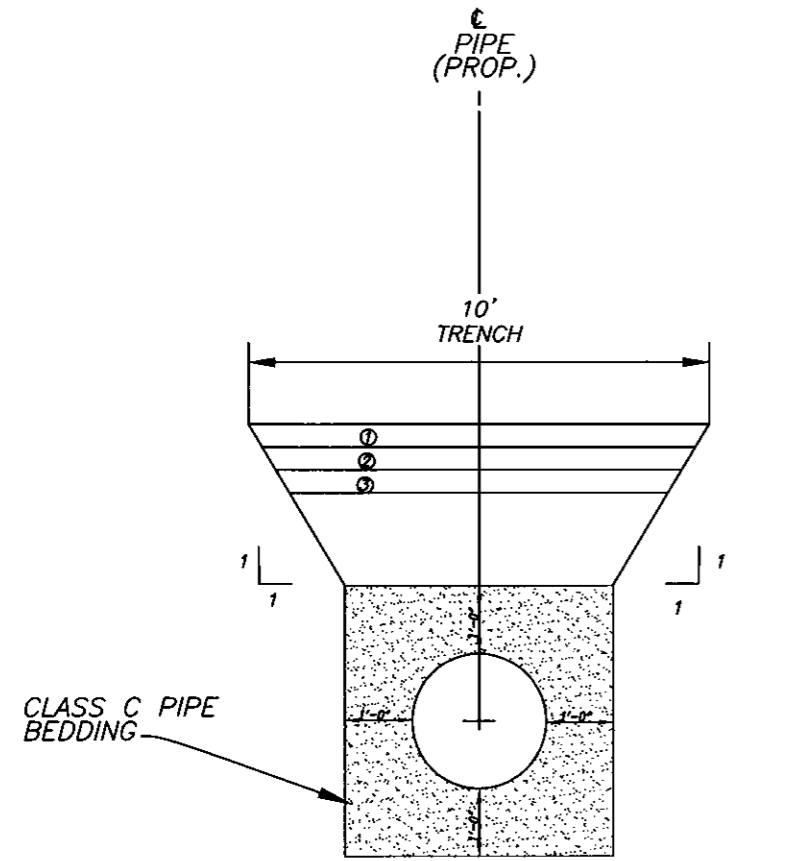
No.	DATE	REVISIONS	No.	DATE	REVISIONS
3			6		
2			5		
1			4		

DES: YB/AH  
 DRN: MP  
 CKD: A.H.  
 DATE: 6/20/09

CITY of TAMPA  
 STORMWATER DEPARTMENT

WESTSHORE BLVD STORMWATER IMPROVEMENTS  
 (EUCLID AVE TO SPRING LAKE)

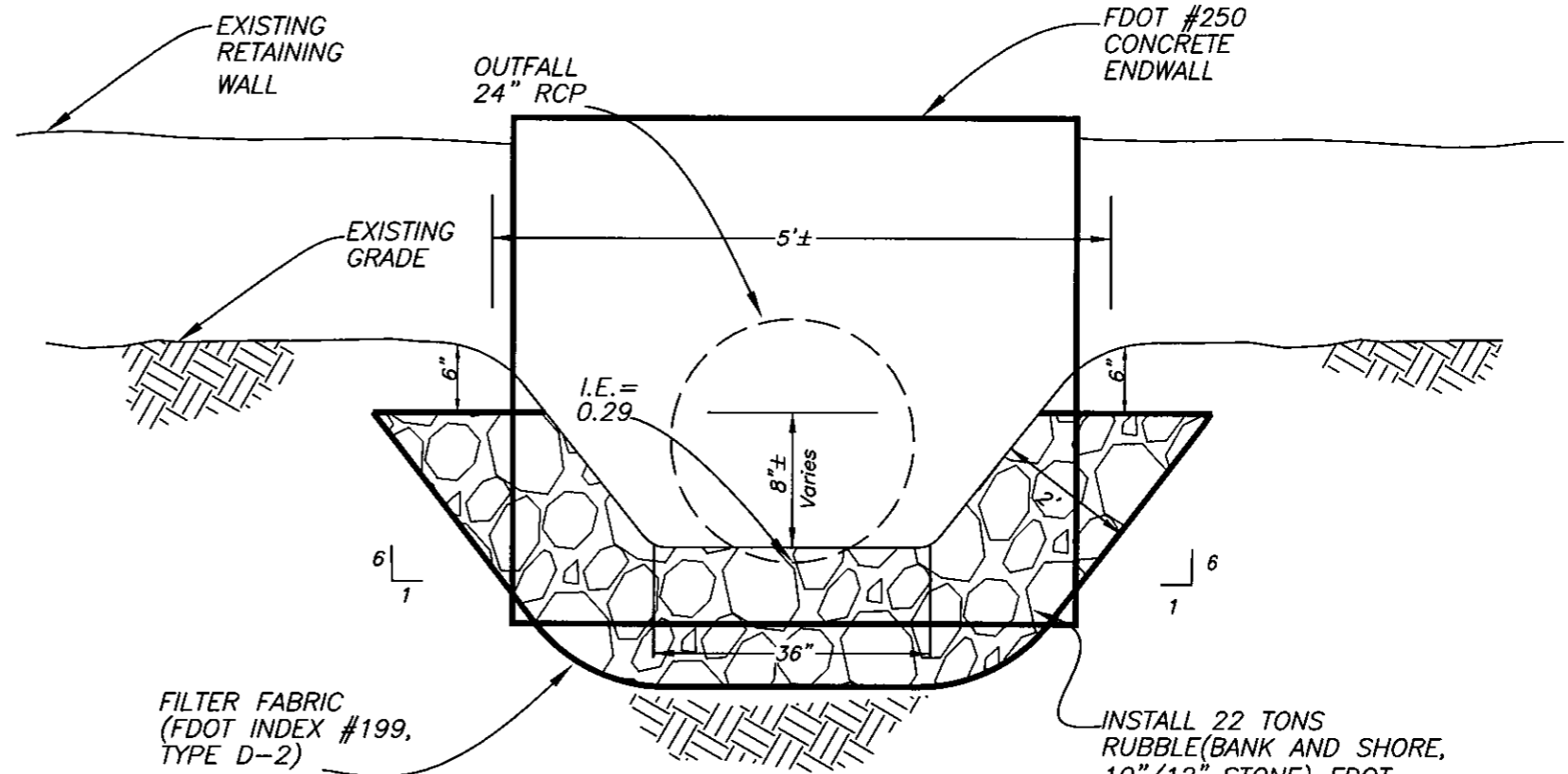
W.O. 5576  
 SHEET  
 18  
 OF 19



PAVEMENT LAYERS

- ① TYPE S-3 ASPHALT (1")
- ② TYPE S-1 ASPHALT (1-1/2")
- ③ CRUSHED CONCRETE BASE (8")

TYPICAL AT STREET CROSSINGS, PARKING LOTS  
AND PAVED AREAS  
N.T.S.



SECTION RIP RAP  
SPILLWAY  
N.T.S.

INSTALL 22 TONS  
RUBBLE (BANK AND SHORE,  
10"/12" STONE) FDOT  
SECTION 530

No.	DATE	REVISIONS	No.	DATE	REVISIONS
3			6		
2			5		
1			4		

DES: YB/AH  
DRN: MP  
CKD: AIT  
DATE: 6-30-09

CITY of TAMPA  
STORMWATER DEPARTMENT

WESTSHORE BLVD STORMWATER IMPROVEMENTS  
(EUCLID AVE TO SPRING LAKE)  
MISCELLANEOUS DETAILS