



CITY OF TAMPA

Pam Iorio, Mayor

CONTRACT ADMINISTRATION DEPARTMENT

David L. Vaughn, AIA, Director

ADDENDUM NO. 1

DATE: April 15, 2010

Contract: 10 - C-00007; Hanna Avenue Pumping Station Control Improvements

Bidders on the above referenced project are hereby notified that the following addendum is made to the Contract Documents. BIDS TO BE SUBMITTED SHALL CONFORM TO THIS NOTICE.

Item 1: Clarifications –

Sheet E-7, keyed noted circuits #1, #2 and #3: These conduits and conductors are marked 'EX' and are not to be replaced.

Note #4, sheet E4: There is one receptacle on each level of the facility for a total of 3.

Note #5, sheet E4: The existing outdoor aluminum conduits / conductors associated with the electrical service, transfer switch, and generator systems shall remain in place.

Sheet E16, E17, E18: No new lighting fixtures are called out.

Item 2: On plan sheet 2, in the Index, change the description for sheet #3 to read 'Temporary Power Connections'.

Item 3: Replace plan sheet 3 with the attached plan sheet 3.

Item 4: Replace plan sheet E4 with the attached plan sheet E4.

Item 5: On plan sheet E-5, change the MCC reference for CB5 to 2P.

Item 6: On plan sheet E-6, change the MCC reference for CB6 to 2P.

This addendum shall be included in and attached to the inside cover of the Contract Documents by and upon which bids are submitted. All other provisions of the Contract Documents and Specifications not in conflict with this Addendum shall remain in full force and effect.

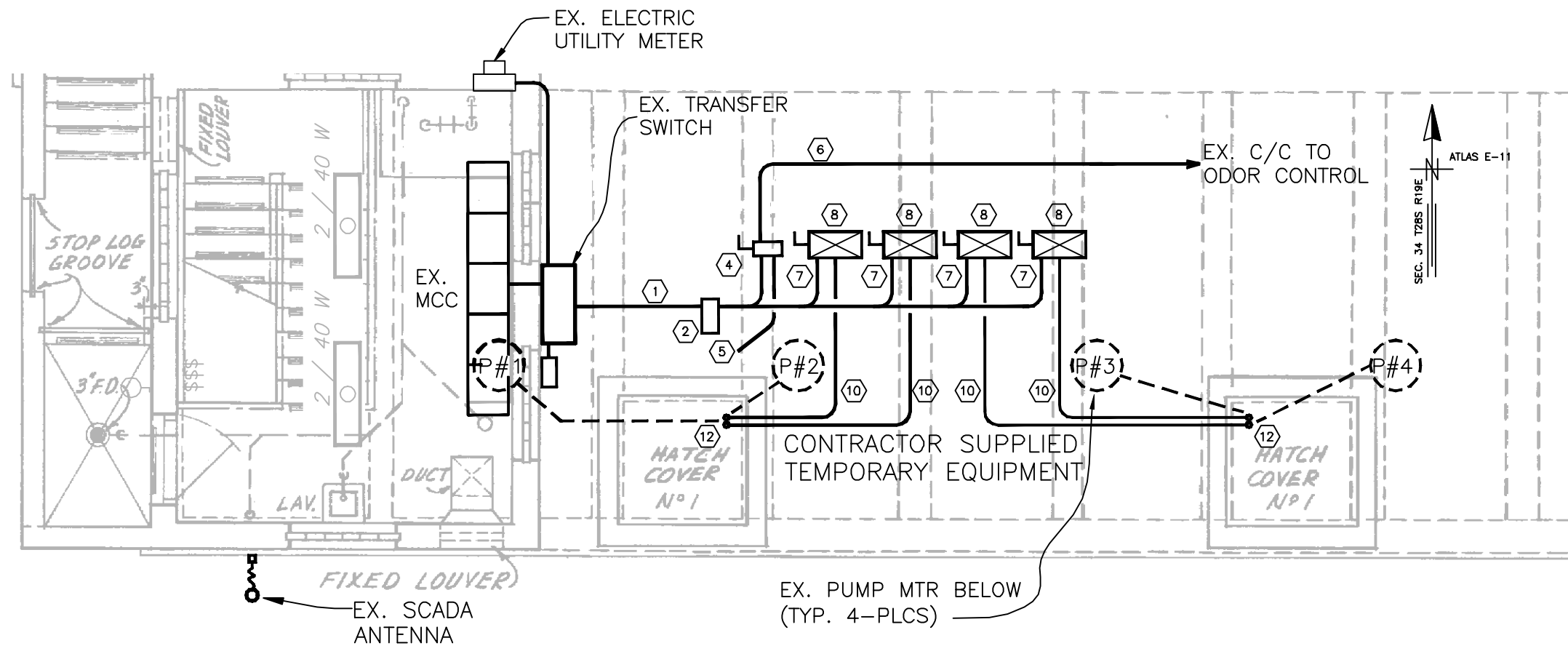
Questions are to be e-mailed to ContractAdministration@tampagov.net.

Jim Greiner

Jim Greiner, P.E., Contract Manager

306 E. Jackson Street, 4N • Tampa, Florida 33602 • (813) 274-8456 • FAX: (813) 274-8080

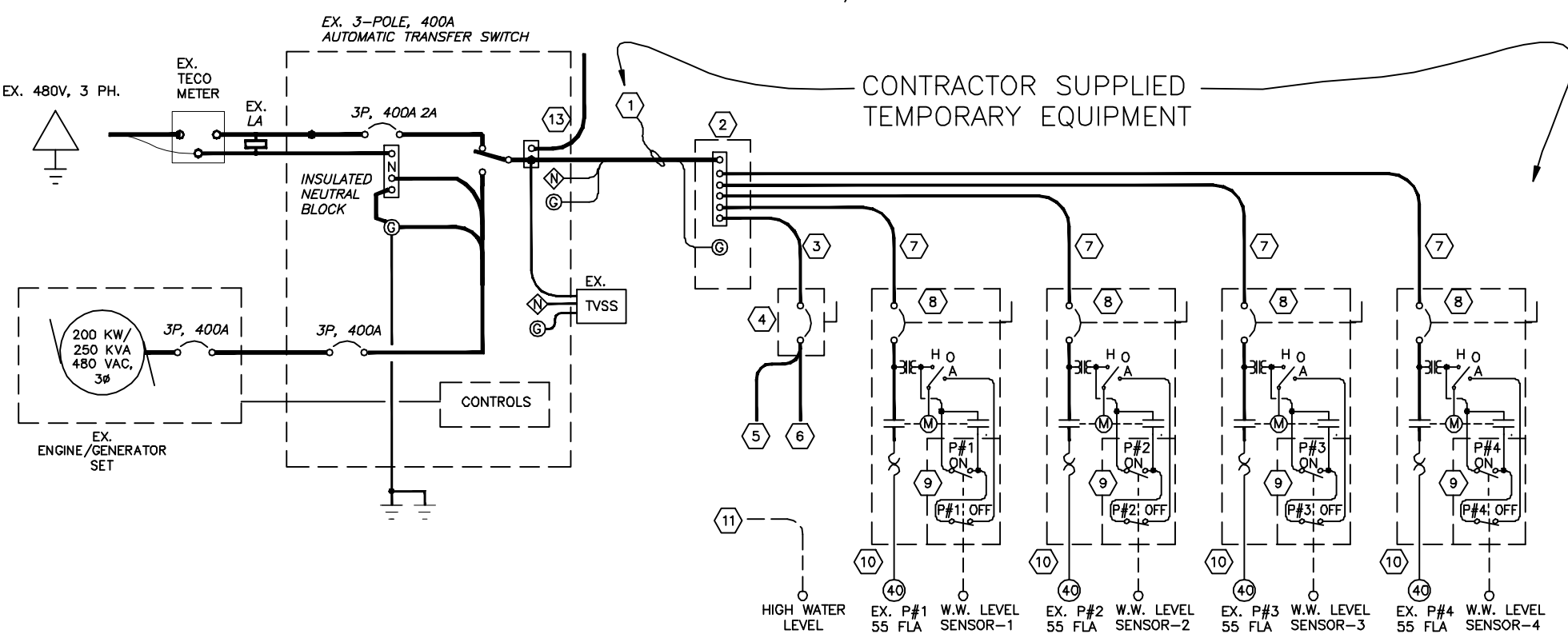

www.tampagov.net



PLAN VIEW FL. EL +8.67

SCALE: 3/16"=1'-0"

- ① (3)-250KCMIL & (1)-#3 GND IN 2-1/2" SCH 40 PVC CONDUIT.
- ② NEMA 4X ENCLOSURE CONTAINING A MARATHON #133-3-585 DISTRIBUTION POWER BLOCK.
- ③ (3)-#6AWG & (1)-#10 GND IN 3/4" SCH 40 PVC CONDUIT.
- ④ NEMA 4X CIRCUIT BREAKER DISCONNECT, 3-POLE, 60 AMP, 18KAIC
- ⑤ LPG FEEDER-- (2)-#10AWG & (1)-#10 GND IN 3/4" SCH 40 PVC CONDUIT.
- ⑥ ODOR CONTROL FEEDER-- (3)-#8AWG & (1)-#10 GND IN 1" SCH 40 PVC CONDUIT.
- ⑦ (3)-#4AWG & (1)-#8 GND IN 1" SCH 40 PVC CONDUIT.
- ⑧ NEMA 4X, SIZE 3 COMBINATION STARTER WITH CIRCUIT BREAKER DISCONNECT AND CONTROLS AS SHOWN.
- ⑨ WET WELL LEVEL SENSOR(S) AND PUMP CONTROLLER(S), AS REQUIRED.
- ⑩ (3)-#4AWG & (1)-#8 GND IN 1" SCH 40 PVC CONDUIT.
- ⑪ HIGH WET WELL LEVEL FLOAT SWITCH TO CITY SUPPLIED SCADA RTU.
- ⑫ WATERPROOF CONDUIT BULKHEAD FITTINGS T&B #H100BHD-A, OR EQUAL.
- ⑬ CONDUCTORS TO NEW MCC

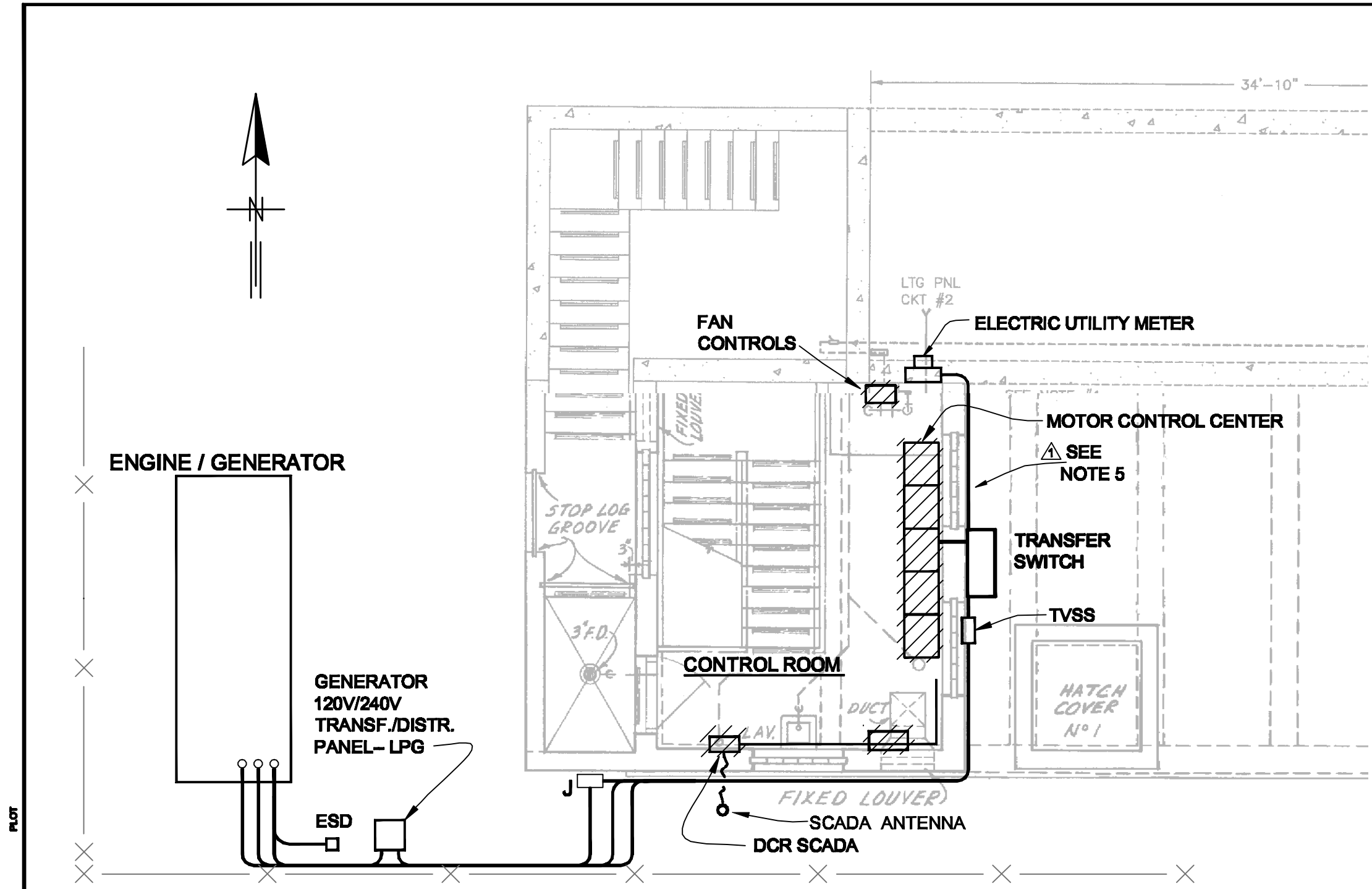


NOTES:

1. CONTRACTOR SHALL SUBMIT A DETAILED PROPOSAL DESCRIBING THE MEANS AND METHODS TO BE USED FOR INSURING UNINTERRUPTED OPERATION OF THE EXISTING SEWAGE PUMPS DURING ALL STAGES OF CONSTRUCTION. PROVIDE SHOP DRAWINGS AND CUT SHEETS OF ALL COMPONENTS USED.
2. THE TEMPORARY PUMP CONTROLS SHALL BE PROVIDED, INSTALLED AND TESTED, BY THE CONTRACTOR; TO THE ENGINEER'S SATISFACTION; PRIOR TO PERFORMING ANY DEMOLITION OR OTHER WORK THAT WOULD NEGATIVELY AFFECT STATION OPERATIONS. DEMOLITION/CONSTRUCTION SHALL NOT BEGIN UNTIL ALL NECESSARY EQUIPMENT AND MATERIALS ARE ON SITE. THE CONTRACTOR MAY USE EQUIPMENT FROM HIS INVENTORY, OR RENT THE TEMPORARY CONTROL EQUIPMENT, AT HIS DISCRETION, AND MUST REMOVE IT FROM THE SITE AT THE COMPLETION OF CONSTRUCTION.
3. ONCE THE TEMPORARY FACILITIES ARE FULLY FUNCTIONAL, THE CONTRACTOR SHALL BE RESPONSIBLE FOR OPERATING, MONITORING AND MAINTAINING THE PUMPING SYSTEM. THE CONTRACTOR SHALL PROVIDE A WET WELL HIGH WATER FLOAT SWITCH ALARM CONTACT AND WIRING TO A CITY SUPPLIED AND INSTALLED SCADA RTU.
4. AT THE POINT IN CONSTRUCTION WHEN TWO OF THE NEW VARIABLE FREQUENCY DRIVE SYSTEMS ARE AVAILABLE FOR START UP, THE CONTRACTOR SHALL CONNECT THEM TO THEIR RESPECTIVE MOTORS AND OPERATE THEM AS THE DUTY PUMPS FOR A TWO WEEK TRIAL PERIOD. IF EVERYTHING IS SATISFACTORY, THE NEXT TWO MOTORS MAY BE CONNECTED TO THE NEW SYSTEM. THE TEMPORARY PUMP CONTROL SYSTEM SHALL REMAIN IN PLACE FOR A PERIOD OF NOT LESS THAN TWO WEEKS, TO PROVE THE RELIABILITY OF ALL FOUR DRIVE SYSTEMS.

MODIFICATIONS ARE SHOWN DARKENED, U.O.N.

ROMAN D. KORCHAK, P.E. #42626 ELECTRICAL SECTION HEAD WASTEWATER DEPARTMENT	No.	DATE	REVISIONS	DES: RDK	CITY of TAMPA WASTEWATER DEPARTMENT	HANNA PUMPING STATION CONTROL IMPROVEMENTS TEMPORARY POWER CONNECTIONS	W.O. 4023
	3			DRN: RDK			SHEET
	2			CKD:			3
	4/12/10		ENTIRE SHEET REPLACED BY ADDENDUM #1	DATE: 4/12/10			OF



NOTES:

1. ITEMS TO BE REMOVED ARE SHOWN HATCHED. PATCH/SEAL PENETRATIONS AND DAMAGED CONCRETE WITH APPROVED PRODUCTS AND FINISH TO MATCH SURROUNDING SURFACE.
2. BEFORE BEGINNING DEMOLITION, THE CONTRACTOR SHALL VERIFY WHAT ITEMS THE CITY WISHES TO RECEIVE AS SALVAGE.
3. CAREFULLY REMOVE THE EXISTING DCR SCADA RTU CABINET AND DELIVER IT TO THE CITY FOR MAINTENANCE INVENTORY.
4. THE EXISTING THREE FLUSH MOUNTED RECEPTACLES (ONE ON EACH LEVEL) SHALL BE ABANDONED AND STAINLESS STEEL BLANK COVER PLATES PROVIDED. NEW RECEPTACLE BOXES W/ NEW RECEPTACLES, SHALL BE SURFACE MOUNTED, AND LOCATED ADJACENT TO THOSE ABANDONED, AS SHOWN, SPECIFIED, AND REQUIRED. CONCEALED CONDUITS TO THE EXISTING LIGHTING MAY BE REUSED. THE EXISTING LIGHTING FIXTURES SHALL BE REUSED. NO NEW LIGHTING FIXTURES ARE CALLED OUT IN THIS PROJECT.
5. THE EXISTING OUTDOOR ALUMINUM CONDUIT AND COPPER CONDUCTORS ASSOCIATED WITH THE ELECTRICAL SERVICE, TRANSFER SWITCH, AND GENERATOR SYSTEMS SHALL REMAIN IN PLACE AND BE MODIFIED ONLY AS REQUIRED TO EXECUTE THE NEW WORK.

DEMOLITION PLAN
SCALE: 3/16"=1'-0"

FILENAME

ROMAN D. KORCHAK, P.E. #42626
ELECTRICAL SECTION HEAD
WASTEWATER DEPARTMENT

No.	DATE	REVISIONS
3		
2		
1	4/12/10	ADDENDUM #1

DES: RDK
DRN: RDK
CKD:
DATE: 2/04/10

CITY of TAMPA
WASTEWATER DEPARTMENT

HANNA PUMPING STATION
CONTROL IMPROVEMENTS
DEMOLITION PLAN

W.O. 4023
SHEET
E4
OF