

THE ENCLOSED DOCUMENT IS
PROVIDED FOR YOUR CONVENIENCE.

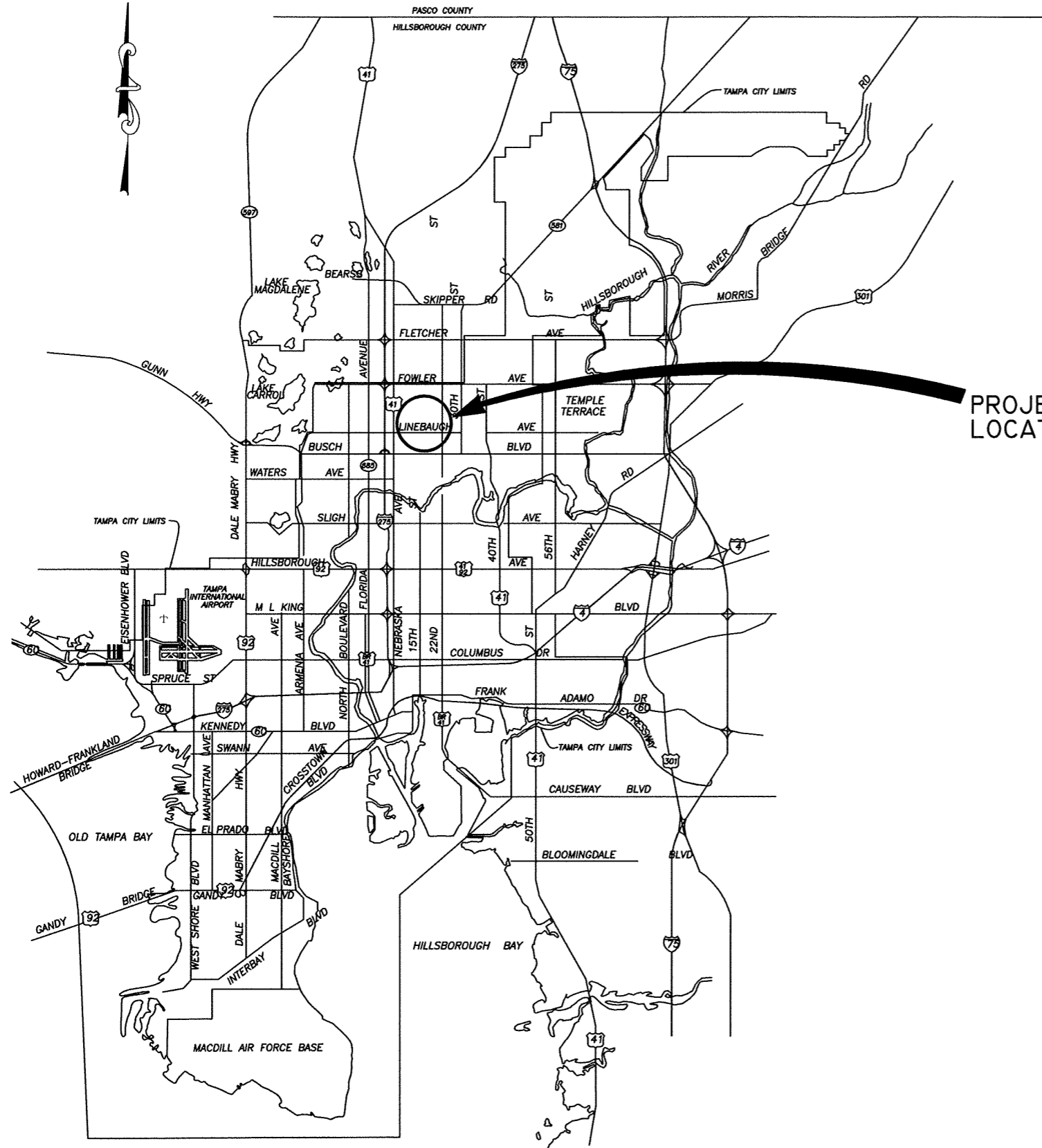
**+REGISTER AS A “PLANHOLDER”
TO BE LISTED ON THE WEBPAGE,
TO BE FOUND BY POTENTIAL
SUB-CONTRACTORS,
AND TO BE OFFICIALLY NOTIFIED OF
ADDENDA.**

FOR ASSISTANCE OR
TO REGISTER
CONTACT:

[MAILTO:CONTRACTADMINISTRATION@TAMPAGOV.NET](mailto:CONTRACTADMINISTRATION@TAMPAGOV.NET)

(813)274-8456, FAX 274-8080
CONTRACT ADMINISTRATION DEPARTMENT
306 E. JACKSON ST. #280A4N
TAMPA, FL 33602

LOCATION MAP



CITY of TAMPA



STORMWATER DEPARTMENT

PLANS FOR

**18TH ST. OUTFALL "C"
STORMWATER IMPROVEMENTS
(N. 17TH ST. & E. IDLEWILD AVE.)**

CONTRACT 10-C-00027

Richard Alfred Hoel
RICHARD ALFRED HOEL, P.E. #41026
DESIGN DIVISION HEAD
STORMWATER DEPARTMENT

DES: Y.B.	No.	DATE	REVISIONS
DRN: MP	3		
CKD: RAH	2		
DATE: 6/16/10	1		

CITY of TAMPA
STORMWATER DEPARTMENT

COVER SHEET

LEGEND

ABBREVIATIONS

EX SEWERS	UP to 24" & SMALLER	24" & LARGER
EX FORCE MAIN		
EX SAN SEWER & MANHOLES		
EX STORM SEWER & MANHOLES		
PROP SEWERS		
PROP FORCE MAIN		
PROP SANITARY SEWER & MANHOLES		
PROP STORM SEWER & MANHOLES		

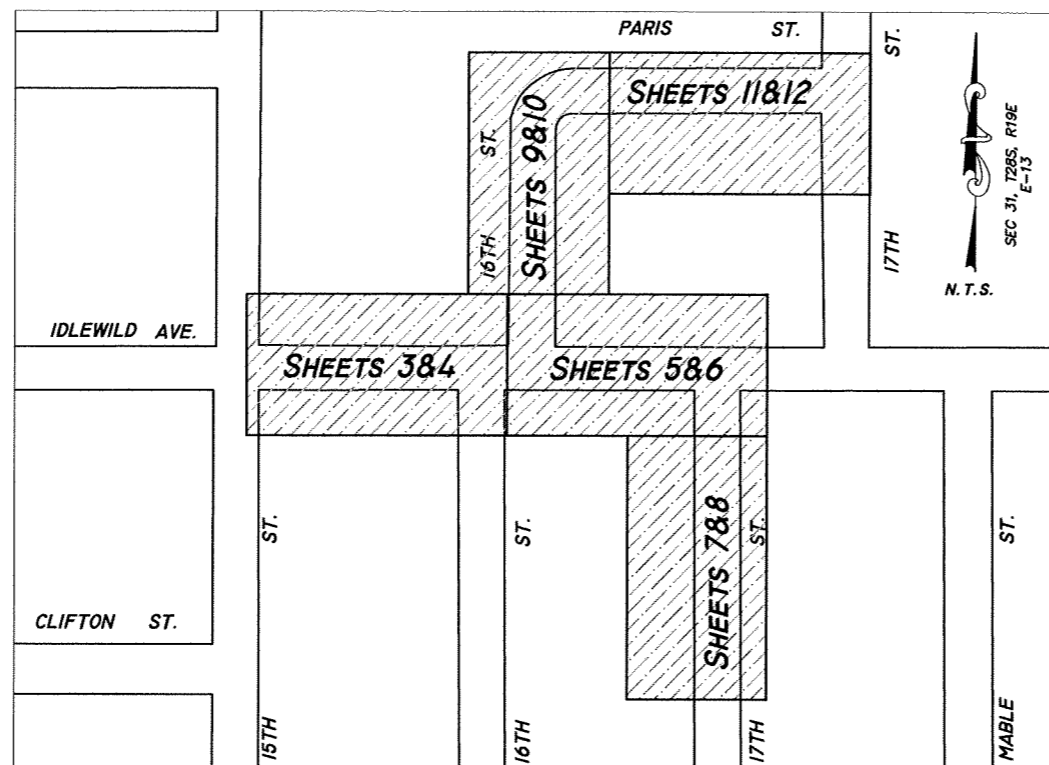
TOP of PIPE	TP	DUCTILE IRON PIPE	DIP
INVERT ELEVATION	IE or INV EL	REINFORCED CONCRETE PIPE	RCP
RIGHT of WAY	R/W	CONCRETE PIPE	CP
MANHOLE	MH or MH	APPROXIMATE LOCATION	AL
POLYVINYL CHLORIDE PIPE	PVCP	BENCH MARK	BM
VITRIFIED CLAY PIPE	VCP	POINT of INTERSECTION	PI
ADVANCED DRAINAGE SYSTEM	ADS		

OTHER FEATURES

RIGHT of WAY LINE	
CURB LINE	
WATER LINE	
GAS LINE	
ELECTRICAL CABLE or DUCT	
TELEPHONE CABLE or DUCT	
TV CABLE	
VALVE	
HYDRANT	
CATCH BASIN, GRATE	
POWER POLE	
TELEPHONE POLE	
GUY POLE	
GUY WIRE	
VALVE VAULT	
WATER METER	
ELECTRICAL MANHOLE or VAULT	
TELEPHONE MANHOLE or VAULT	
TRAFFIC BOX or VAULT	
BUILDING LIMIT	
FENCE	
CONIFER	
PALM	
OAK	
OTHER	
SHRUB	
HEDGE	
RAILROAD TRACKS	
IRON PIPE	
CONCRETE MONUMENT	
OPEN DITCHES	
EXISTING WYE	
PROPOSED WYE	
CLEAN OUT	

INDEX

No.	DESCRIPTION
1	COVER SHEET
2	LEGEND, INDEX & NOTES
3-12	PLAN AND PROFILE
13	MISCELLANEOUS DETAILS



GENERAL NOTES:

- ALL ELEVATIONS ARE REFERRED TO THE MEAN SEA LEVEL DATUM OF THE U.S.C. AND G.S. (N.O.S.).
- ELEVATIONS SHOWN HEREON ARE IN FEET AND ARE BASED ON CITY OF TAMPA BENCHMARKS "B-1695", HAVING A PUBLISHED ELEVATION OF 55.114 AND "B-1697", HAVING A PUBLISHED ELEVATION OF 55.195, REFERENCED TO THE NATIONAL GEODETIC VERTICAL DATUM OF 1929 (NGVD29).
- EXISTING UTILITIES AND TOPOGRAPHIC INFORMATION DENOTED BY UPPER AND LOWER CASE, PROPOSED WORK DENOTED BY ALL UPPER CASE.
- THE CONTRACTOR SHALL CALL SUNSHINE (1-800-432-4770) AT LEAST 72 HOURS PRIOR TO ANY CONSTRUCTION ACTIVITIES.
- WHEN IN CONFLICT, UTILITY POLES, GAS LINES, UNDERGROUND ELECTRIC, TELEPHONE AND OTHER COMMUNICATION CABLES AND CONDUIT WILL BE RELOCATED BY THE RESPECTIVE UTILITY OWNERS AT THEIR OWN EXPENSE AS DIRECTED BY THE ENGINEER. RESOLVING CONFLICTS WITH PRIVATE UTILITIES IS THE RESPONSIBILITY OF THE CONTRACTOR AND NO ADDITIONAL PAYMENT WILL BE MADE.
- PRIOR TO ANY CONSTRUCTION, CONTACT TAMPA ELECTRIC COMPANY (PH 228-4714) FOR EXACT LOCATION OF UNDERGROUND LINES. TECO TO RELOCATE ANY CONFLICTING LINES.
- SPECIAL CARE MUST BE TAKEN TO PROTECT WATER MAINS, VALVE BOXES, METER & SERVICE LINES, AND HYDRANTS DURING CONSTRUCTION, IF NECESSARY PROVIDE SUPPORTS. IF PROBLEMS OCCUR, CALL TAMPA WATER DEPARTMENT TRIAGE CENTER AT 813-274-7400.
- STATIONS AND OFFSETS GIVEN ARE TO THE CENTER LINE OF THE INLETS AND MANHOLES, AND REFER TO THE SURVEY BASE LINES.
- THE SOLID WASTE DEPARTMENT IS TO BE NOTIFIED PRIOR TO ANY STREET CLOSURES IN THE PROJECT AREA.
- TREE REMOVAL CONTRACTOR IS RESPONSIBLE FOR OBTAINING SITE CLEARING PERMIT PRIOR TO START OF ANY CONSTRUCTION.
- NECESSARY ROOT PRUNING AND TRIMMING OF BRANCHES SHALL BE DONE BY A LICENSED TREE CONTRACTOR.
- SOD ALL THE DISTURBED AREAS AS DIRECTED BY THE ENGINEER.
- WHERE CONNECTIONS TO EXISTING WALKS AND DRIVES ARE NOT INDICATED ON THE PLANS, PROPER CONNECTIONS SHALL BE MADE AT THE DIRECTION OF THE ENGINEER.
- STREET SIGNS, STREET MARKERS AND R-O-W MARKERS SHALL BE REMOVED AND RELOCATED AS DIRECTED BY THE ENGINEER.
- DRIVEWAYS SHALL BE RECONSTRUCTED IN ACCORDANCE WITH CHAPTER 45, ARTICLE XII OF THE CITY CODE, AS AMENDED BY ORDINANCE NO. 7582-A ADOPTED MARCH 17, 1981. DEVIATION FROM ESTABLISHED STANDARDS SHALL BE APPROVED BY THE CITY TRAFFIC ENGINEER.
- THE CONTRACTOR IS RESPONSIBLE FOR COMPLIANCE WITH ALL CURRENT ENVIRONMENTAL AND PERMIT RULES AND REGULATIONS OF THE CITY, STATE (D.E.R. & SWFWMD), TAMPA PORT AUTHORITY, E.P.C. AND OTHERS.
- PROFILE ELEVATIONS REFER TO BASELINE ELEVATIONS FROM THE SURVEY, UNLESS OTHERWISE NOTED. PROPOSED ELEVATIONS SHALL MATCH EXISTING GRADES.
- WASTE WATER LATERALS TO BE REPLACED WITHIN TRENCH PAVEMENT LIMITS UNDER CONTRACT ITEM # 996 PER LINEAR FOOT INCLUDING ALL NECESSARY APPURTENANT MATERIALS TO COMPLETE.
- ALL EXISTING SEWER HOUSE CONNECTIONS WERE VACUUM LOCATED AT THE CROSSING OF THE PROPOSED STORMWATER PIPE.

18th St. Outfall "C"

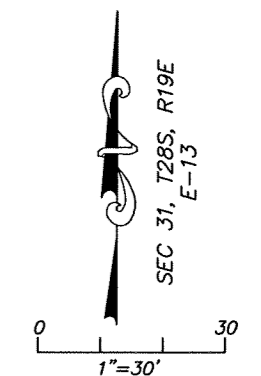
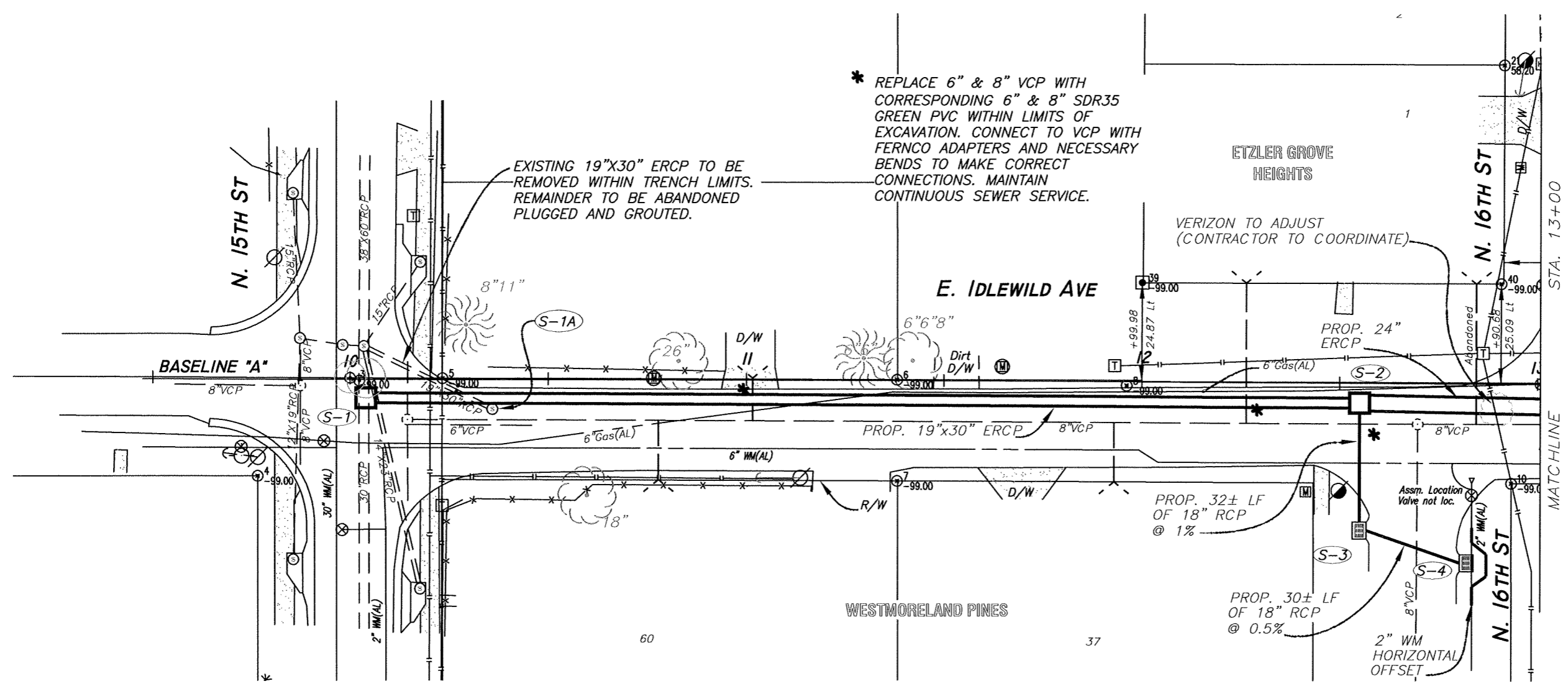
No.	DATE	REVISIONS	No.	DATE	REVISIONS
3			6		
2			5		
1			4		

DES: YB
 DRN: MP
 CKD: PAH
 DATE: 6/16/10

CITY of TAMPA
 STORMWATER DEPARTMENT

18TH ST. OUTFALL "C"
STORMWATER IMPROVEMENTS
INDEX & LEGEND

W.O. 5935
 SHEET
2
 OF 13



- (S-1) STA 10+04, 5'± RT
PROP. DOGHOUSE MH (5'X5')
EX. 30" INV. EL. (N&W)= 43.30
INV. EL. 19"X30" ERCP(E)= 43.30
EX. TOP EL.= 51.70±
- (S-1A) STA 10+36, 7'± RT
EX. MH TO BE REMOVED. 10± LF
OF 19"X30" ERCP TO BE REMOVED.
- (S-2) STA 12+55, 5'± RT
PROP. STD. TYPE "P" MH (5'X5')
INV. EL. 19"X30" ERCP(W) = 49.00
INV. EL. 24" RCP(E)= 49.20
INV. EL. 18" RCP(S)= 49.20
TOP EL.= 57.40±

- (S-3) STA 12+55, 37'± RT
PROP. TYPE "T" GRATE INLET
INV. EL. 18" RCP(N) = 49.52
INV. EL. 18" RCP(SE) = 49.62
TOP EL.= 57.30±
- (S-4) STA 12+82, 45'± RT
PROP. TYPE "T" GRATE INLET
INV. EL. 18" RCP(NW) = 49.77
TOP EL.= 57.50±

(M) WATER METER SERVICES TO BE ADJUSTED AS NEEDED

59.35(18th St. Outfall "C")

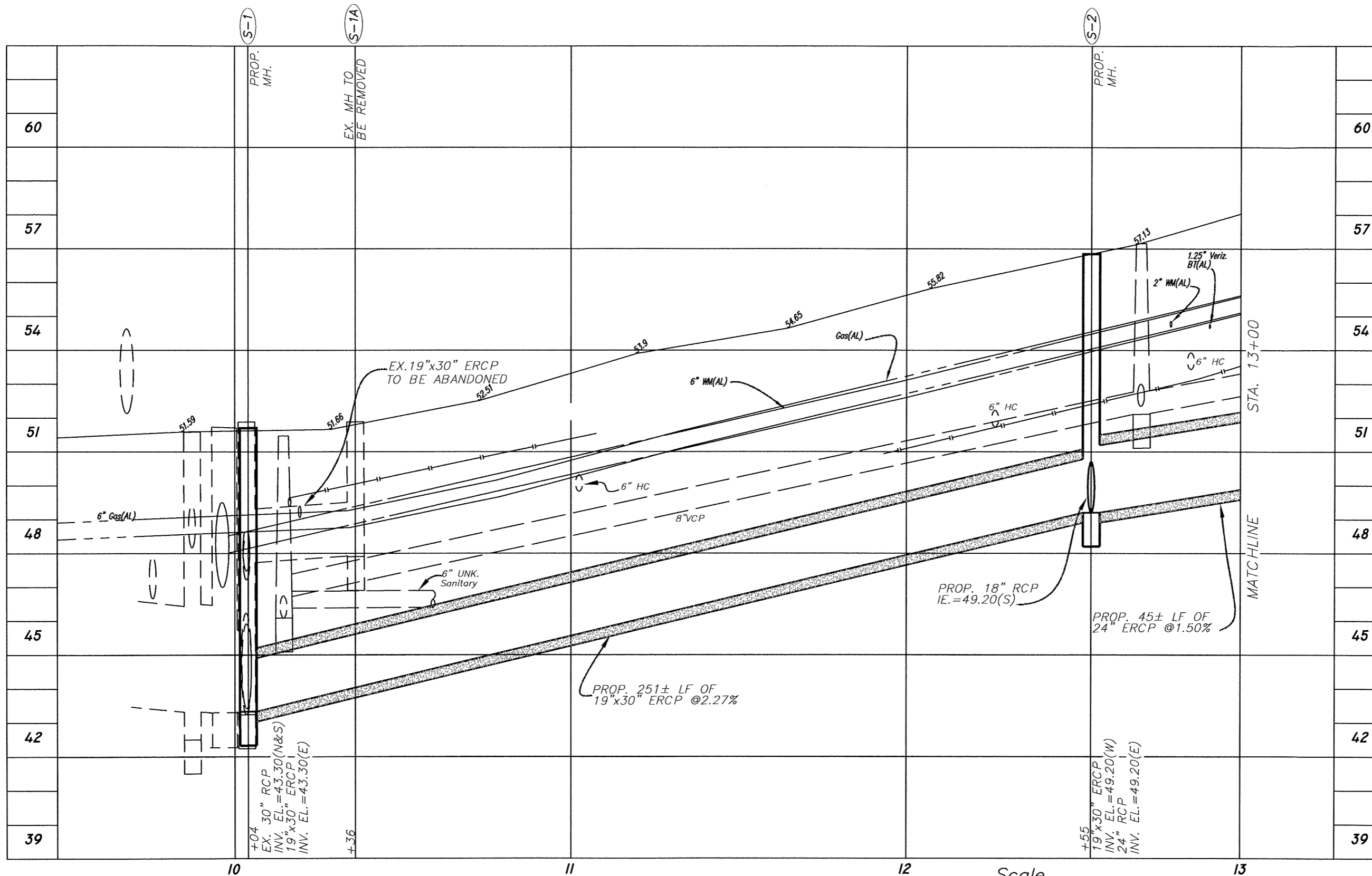
No.	DATE	REVISIONS	No.	DATE	REVISIONS
3			6		
2			5		
1			4		

DES: YB
DRN: MP
CKD: RAH
DATE: 6/11/10

CITY of TAMPA
STORMWATER DEPARTMENT

18TH ST. OUTFALL "C"
STORMWATER IMPROVEMENTS
BASELINE "A"

W.O. 5935
SHEET
3
OF 13



Scale
 1"=30' Horizontal
 1"=3' Vertical

5935(18th St. Outfall "C")

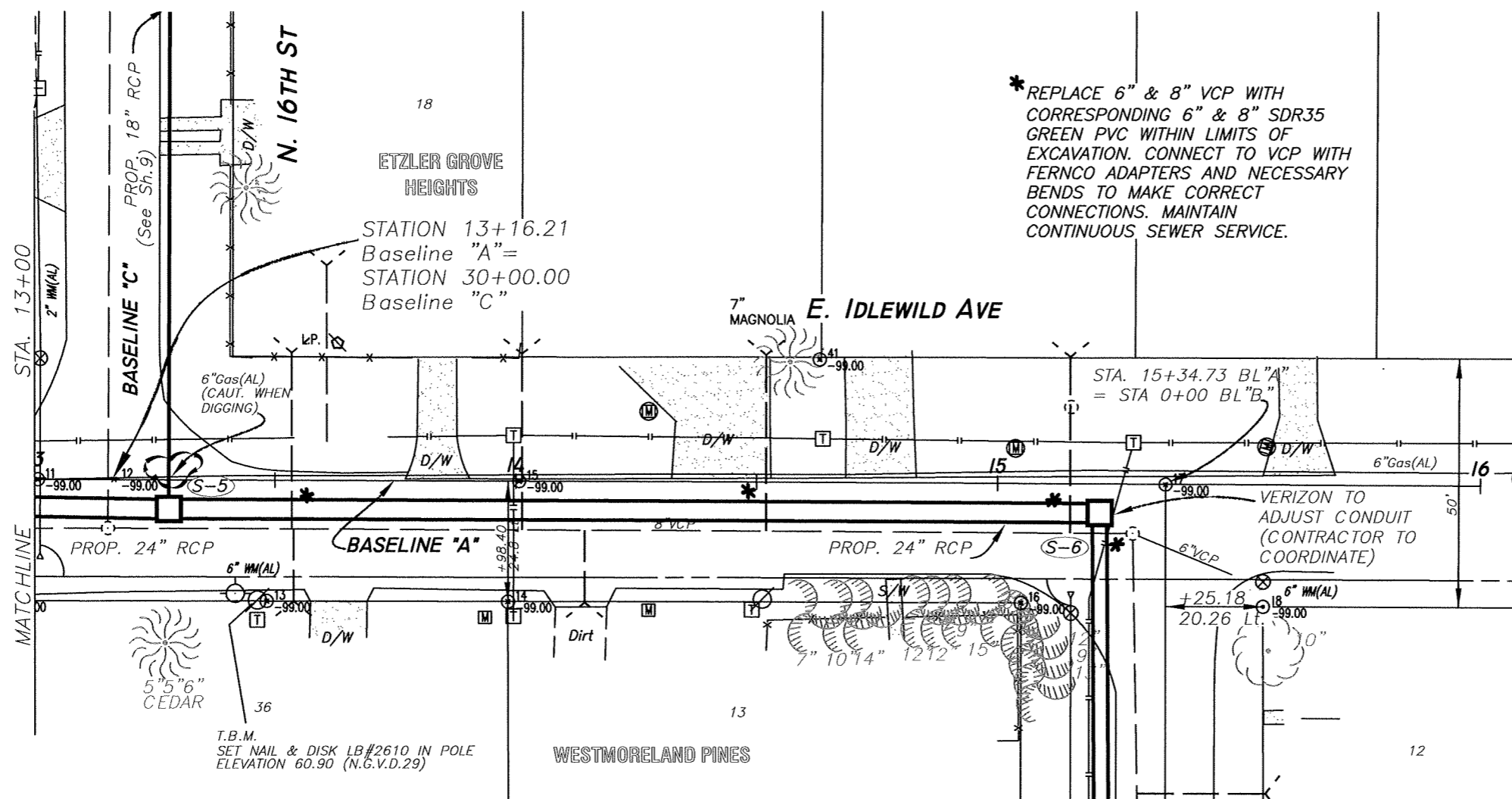
No.	DATE	REVISIONS	No.	DATE	REVISIONS
3			6		
2			5		
1			4		

DES: YB
 DRN:
 CKD: RAK
 DATE: 6/16/10

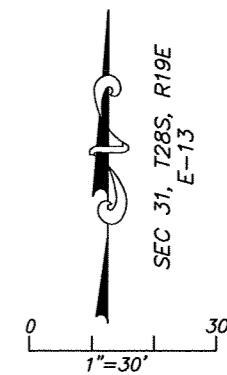
CITY of TAMPA
 STORMWATER DEPARTMENT

18TH ST. OUTFALL "C"
 STORMWATER IMPROVEMENTS
 BASELINE "A"

W.O. 5935
 SHEET
 4
 OF 13



* REPLACE 6" & 8" VCP WITH CORRESPONDING 6" & 8" SDR35 GREEN PVC WITHIN LIMITS OF EXCAVATION. CONNECT TO VCP WITH FERNCO ADAPTERS AND NECESSARY BENDS TO MAKE CORRECT CONNECTIONS. MAINTAIN CONTINUOUS SEWER SERVICE.



- (S-5) STA 13+28, 6'± RT
PROP. STD. TYPE "P" MH (5'X5')
INV. EL. 24" ERCP(E&W) = 50.30
INV. EL. 18" RCP(N) = 50.40
TOP EL. = 58.71±
- (S-6) STA 15+21, 6'± RT
PROP. STD. TYPE "P" MH (4'X4')
INV. EL. 24" RCP(S&W) = 53.40
TOP EL. = 62.87±

(M) WATER METER SERVICES TO BE ADJUSTED AS NEEDED

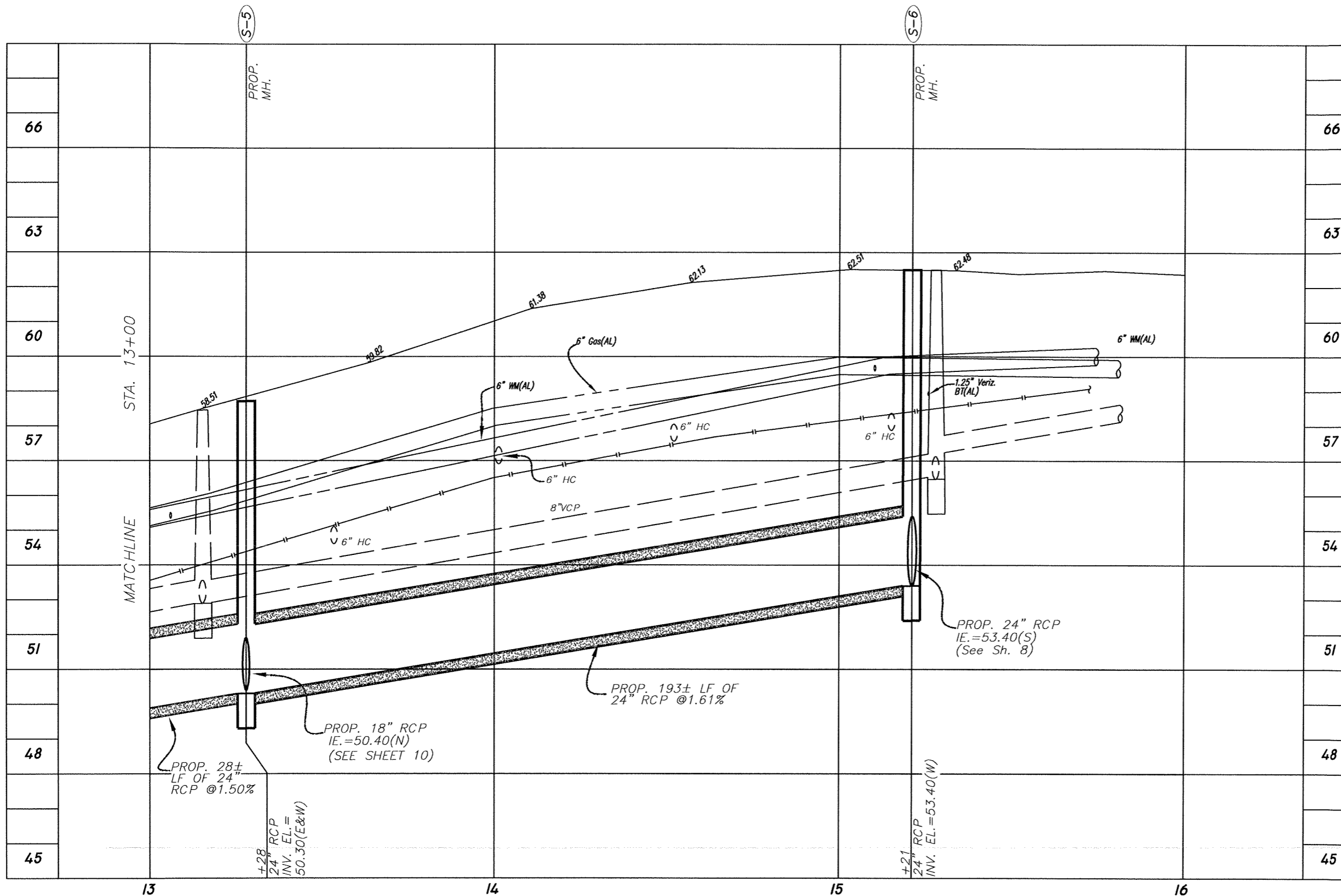
5935(18th St. Outfall "C")

No.	DATE	REVISIONS	No.	DATE	REVISIONS
3			6		
2			5		
1			4		

DES: YB
DRN:
CKD: RAH
DATE: 6/16/10

CITY of TAMPA
STORMWATER DEPARTMENT

18TH ST. OUTFALL "C"
STORMWATER IMPROVEMENTS
BASELINE "A"



Scale
 1"=30' Horizontal
 1"=3' Vertical

5935(18th St. Outfall "C")

No.	DATE	REVISIONS	No.	DATE	REVISIONS
3			6		
2			5		
1			4		

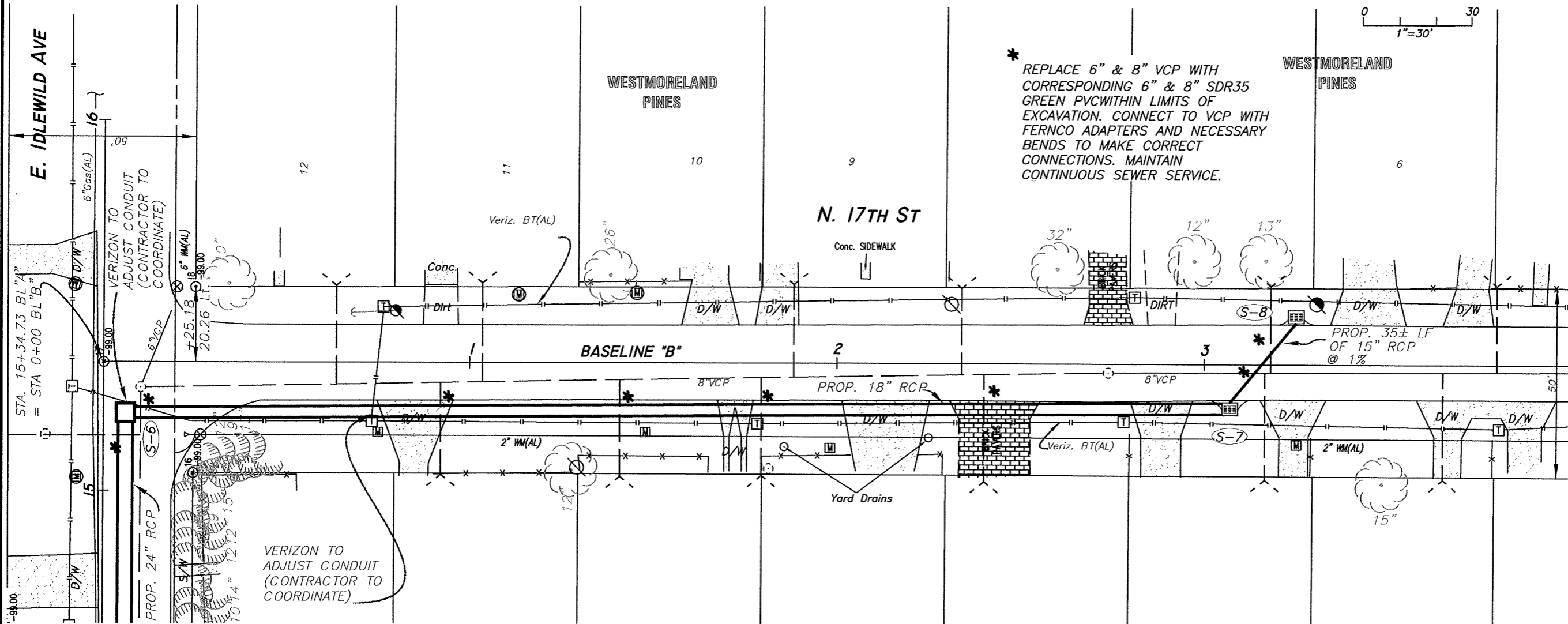
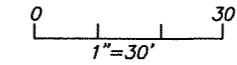
DES: YB
 DRN:
 CKD: RGA
 DATE: 6/16/10

CITY of TAMPA
 STORMWATER DEPARTMENT

18TH ST. OUTFALL "C"
 STORMWATER IMPROVEMENTS
 BASELINE "A"

W.O. 5935
 SHEET
6
 OF 13

SEC 31, T28S, R19E
E-13



* REPLACE 6" & 8" VCP WITH CORRESPONDING 6" & 8" SDR35 GREEN PVC WITHIN LIMITS OF EXCAVATION. CONNECT TO VCP WITH FERNCO ADAPTERS AND NECESSARY BENDS TO MAKE CORRECT CONNECTIONS. MAINTAIN CONTINUOUS SEWER SERVICE.

WESTMORELAND PINES

N. 17TH ST

BASELINE "B"

PROP. 35± LF OF 15" RCP @ 1%

(S-6) STA 15+21, 6'± RT (BASELINE A)
PROP. STD. TYPE "P" MH (4X4')
INV. EL. 24" RCP(W) = 53.4
INV. EL. 18" RCP(S) = 53.4
TOP EL. = 62.87±

(S-7) STA 3+07, 12'± RT (BASELINE "B")
PROP. TYPE "T" GRATE INLET (W/CONC. APRON)
INV. EL. 18" RCP(N) = 55.30
INV. EL. 15" RCP(SE) = 55.50
TOP EL. = 62.50±

(S-8) STA 3+25, 13'± LT (BASELINE "B")
PROP. TYPE "T" GRATE INLET (W/CONC. APRON)
INV. EL. 15" RCP(NW) = 55.85
TOP EL. = 62.00±

(M) WATER METER SERVICES TO BE ADJUSTED AS NEEDED

5935(18th St. Outfall "C")

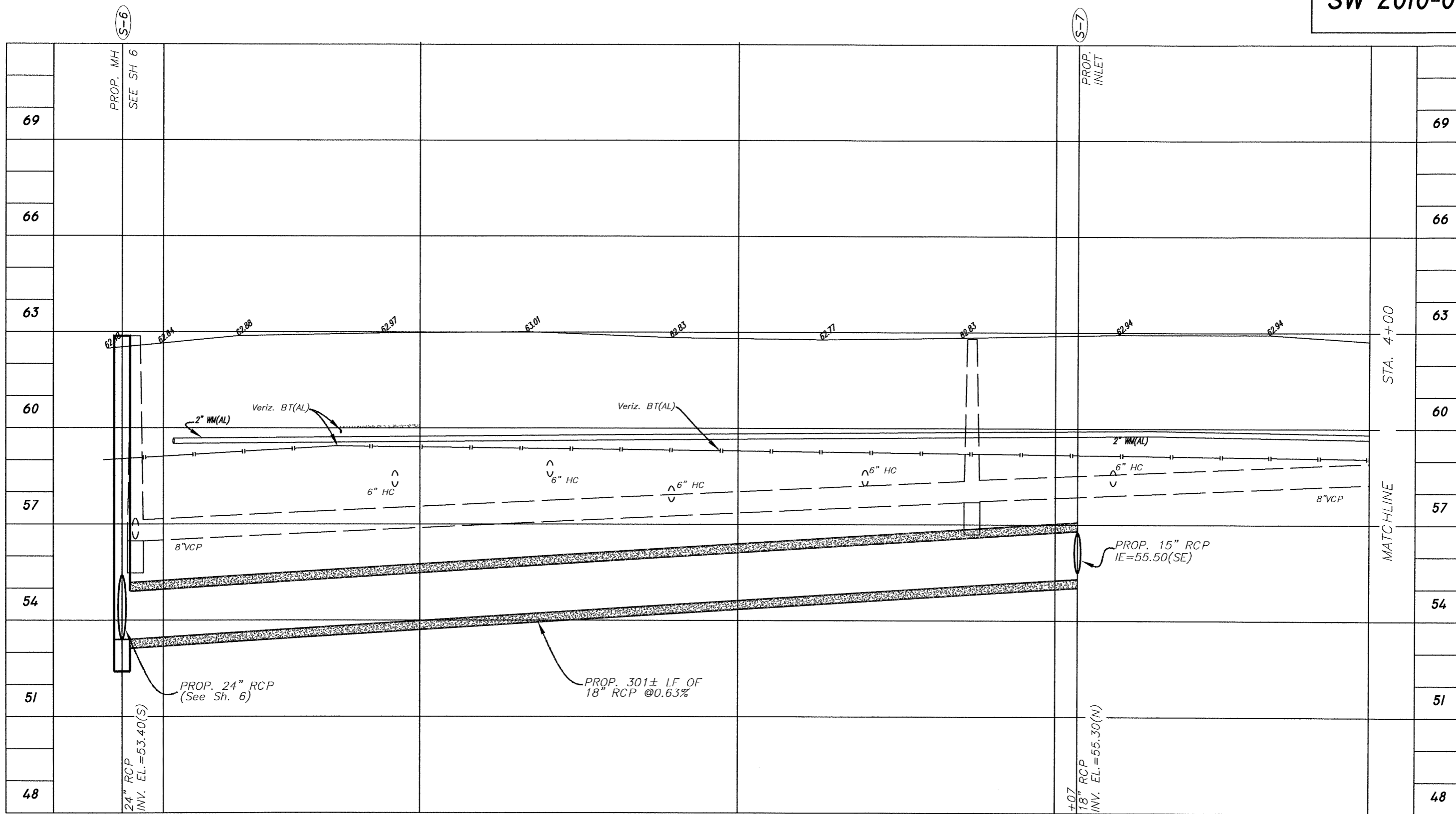
No.	DATE	REVISIONS	No.	DATE	REVISIONS
3			6		
2			5		
1			4		

DES: YB
DRN:
CKD: RAA
DATE: 6/16/10

CITY of TAMPA
STORMWATER DEPARTMENT

18TH ST. OUTFALL "C"
STORMWATER IMPROVEMENTS
BASELINE "B"

W.O. 5935
SHEET
7
OF 13



Scale
 1"=30' Horizontal
 1"=3' Vertical

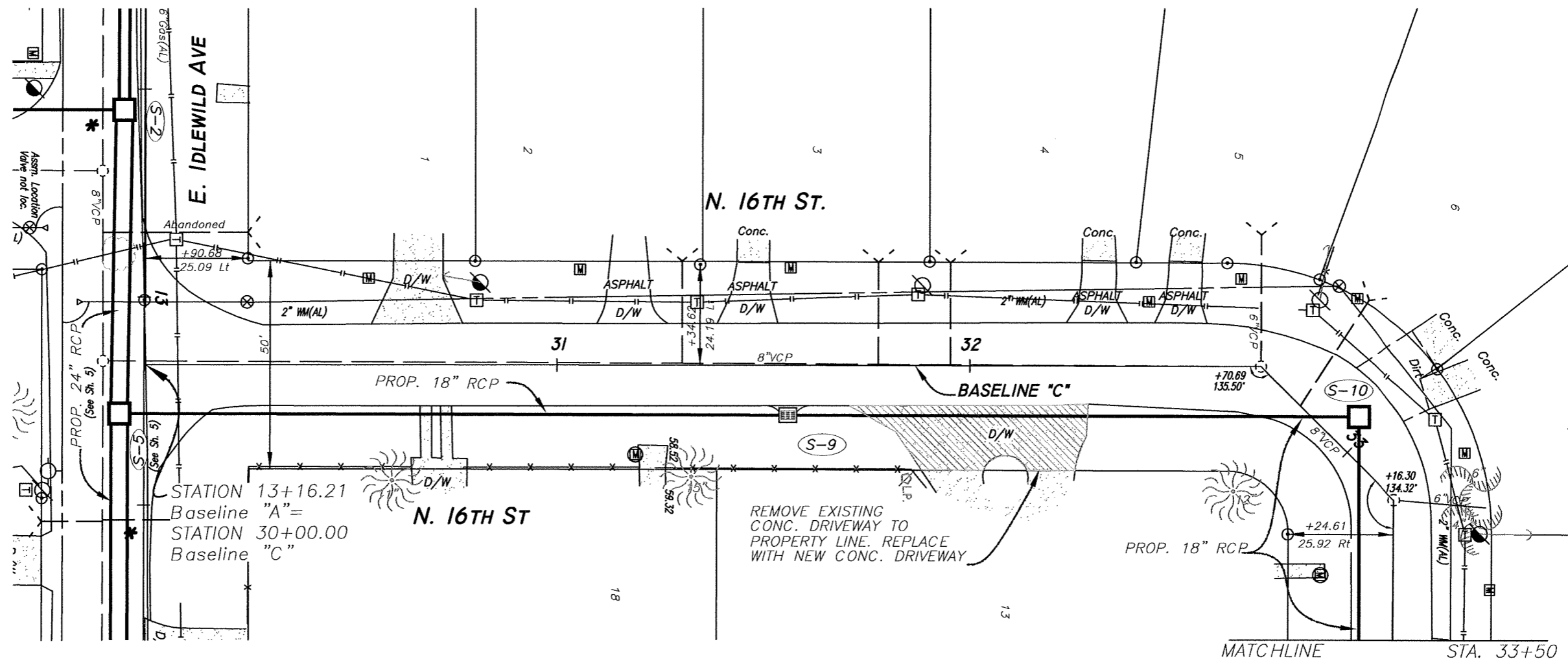
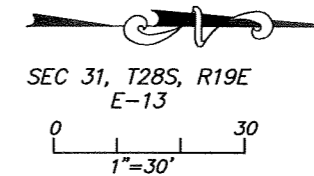
5935(18th St. Outfall "C")

No.	DATE	REVISIONS	No.	DATE	REVISIONS
3			6		
2			5		
1			4		

DES: YB
 DRN:
 CKD: RAH
 DATE: 6/16/10

CITY of TAMPA
 STORMWATER DEPARTMENT

18TH ST. OUTFALL "C"
STORMWATER IMPROVEMENTS
BASELINE "B"



S-5 STA 13+28, 6'± RT (BASELINE A)
 PROP. STD. TYPE "P" MH (5'X5')
 INV. EL. 24" RCP(E&W) = 50.30
 INV. EL. 18" RCP(N) = 50.40
 TOP EL. = 58.71±

S-9 STA 31+56, 12'± RT
 PROP. TYPE "T" GRATE INLET(W/CONC. APRON)
 INV. EL. 18" RCP(S&N) = 51.05
 TOP EL. = 57.80±

M WATER METER SERVICES TO
 BE ADJUSTED AS NEEDED

S-10 STA 32+96, 8'± LT
 PROP. STD. TYPE "P" MH (5'X5')
 INV. EL. 18" RCP(S&E) = 51.41
 TOP EL. = 58.24±

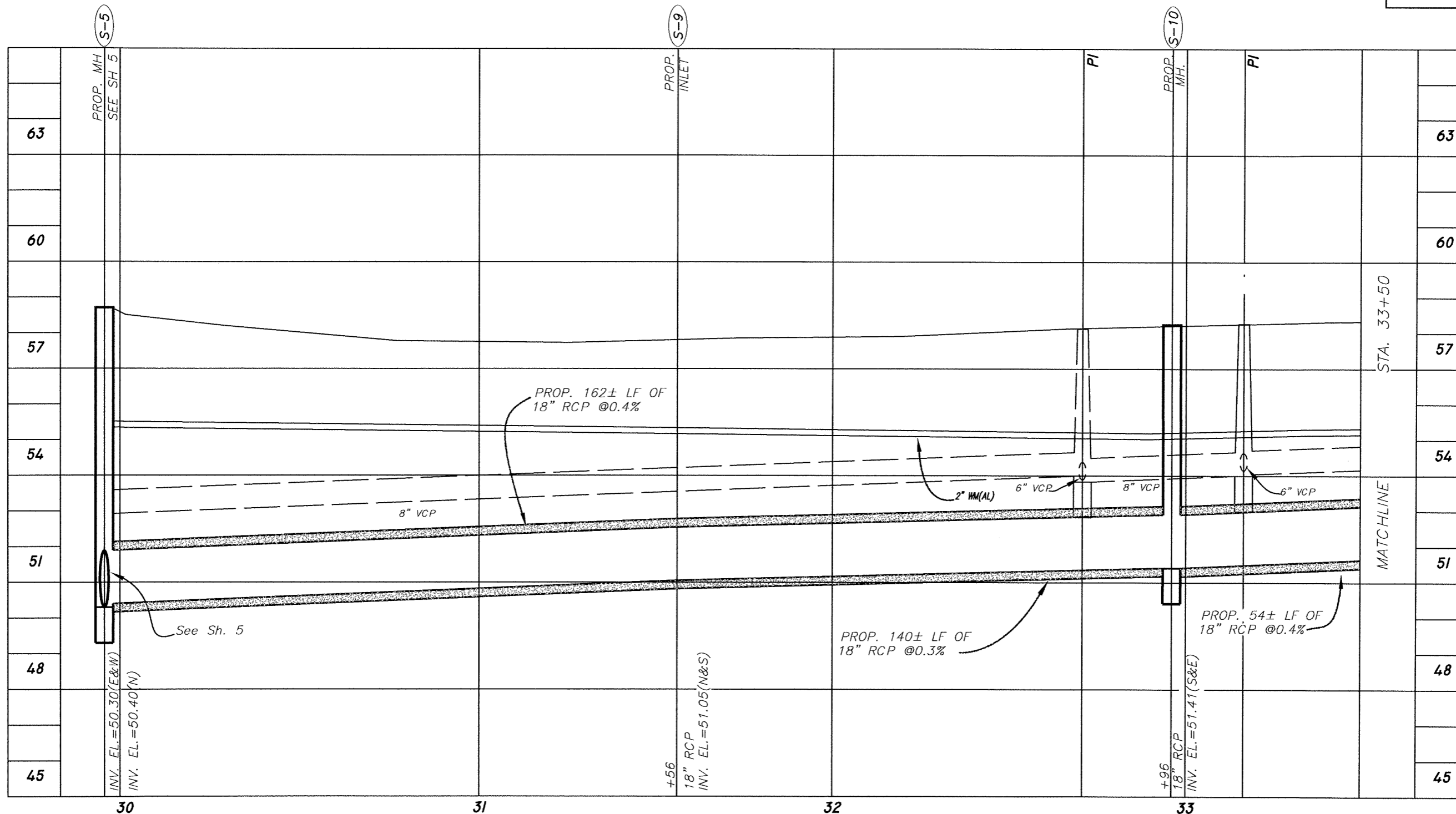
5935(18th St. Outfall "C")

No.	DATE	REVISIONS	No.	DATE	REVISIONS
3			6		
2			5		
1			4		

DES: **YB**
 DRN:
 CKD: *RAH*
 DATE: *6/16/10*

CITY of TAMPA
STORMWATER DEPARTMENT

18TH ST. OUTFALL "C"
STORMWATER IMPROVEMENTS
BASELINE "C"



Scale
 1"=30' Horizontal
 1"=3' Vertical

5935(18th St. Outfall "C")

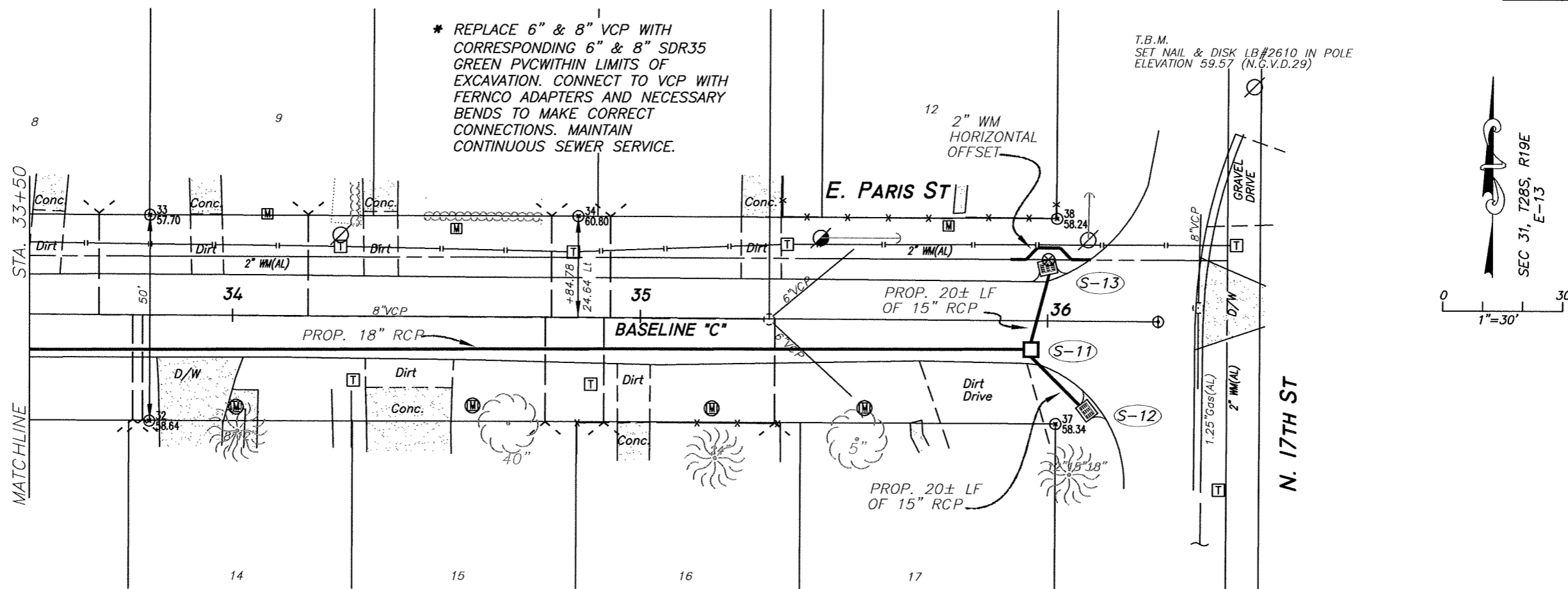
No.	DATE	REVISIONS	No.	DATE	REVISIONS
3			6		
2			5		
1			4		

DES: YB
 DRN:
 CKD: [Signature]
 DATE: 6/16/10

CITY of TAMPA
 STORMWATER DEPARTMENT

18TH ST. OUTFALL "C"
 STORMWATER IMPROVEMENTS
 BASELINE "C"

W.O. 5935
 SHEET
10
 OF 13



(M) WATER METER SERVICES TO BE ADJUSTED AS NEEDED

- (S-11) STA 35+96, 7'± RT
PROP. STD. TYPE "P" MH (3.5'X3.5')
INV. EL. 18" RCP(W) = 52.70
INV. EL. 15" RCP(NE&SE) = 52.70
TOP EL. = 58.60±
- (S-12) STA 36+10, 22'± RT
PROP. TYPE "T" GRATE INLET(W/CONC. APRON)
INV. EL. 15" RCP(NW) = 52.90
TOP EL. = 58.34±

- (S-13) STA 36+00, 12'± LT
PROP. TYPE "T" GRATE INLET(W/CONC. APRON)
INV. EL. 15" RCP(SW) = 52.90
TOP EL. = 58.60±

5935(18th St. Outfall "C")

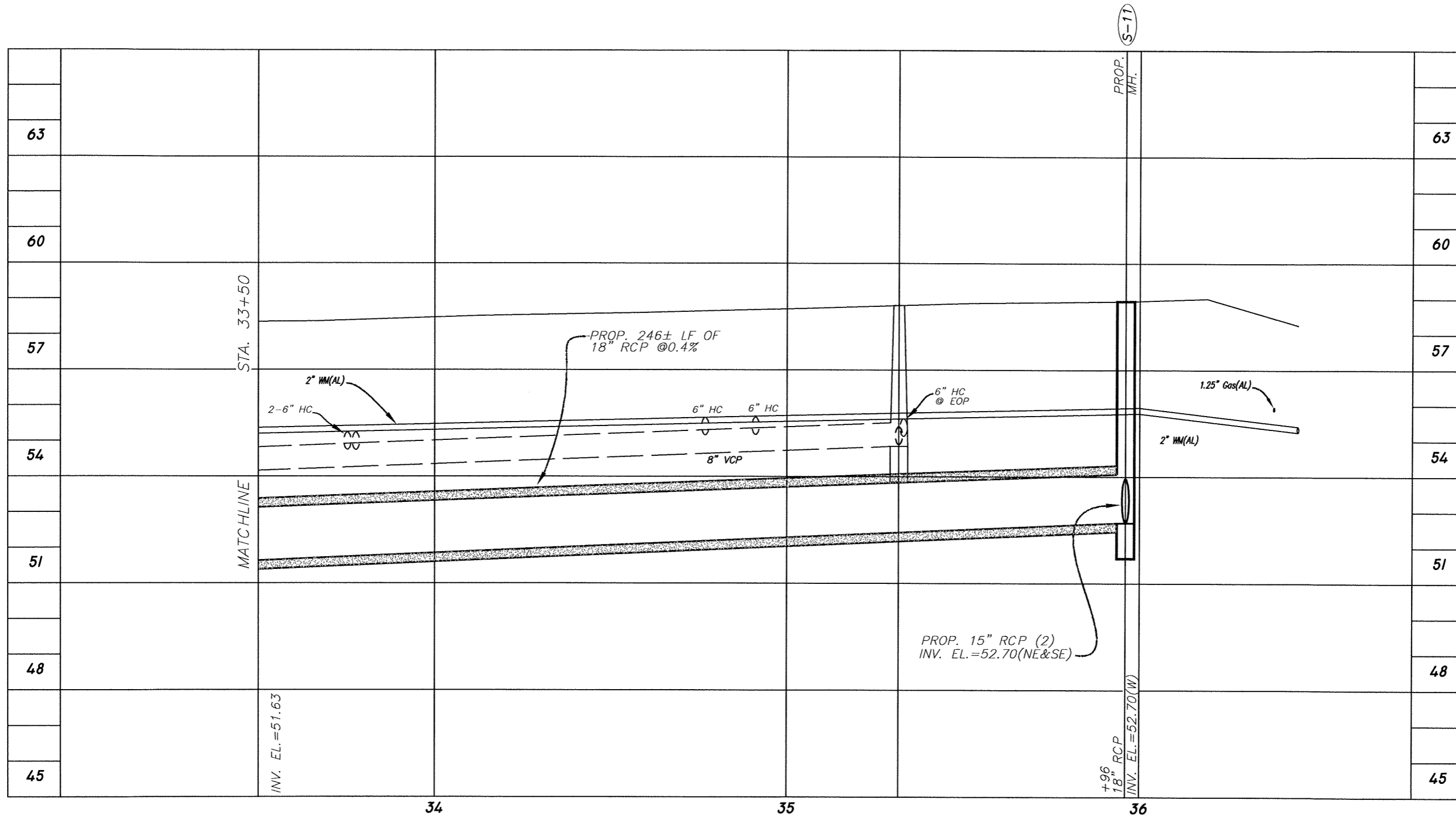
No.	DATE	REVISIONS	No.	DATE	REVISIONS
3			6		
2			5		
1			4		

DES: YB
DRN:
CKD: [Signature]
DATE: 01/26/10

CITY of TAMPA
STORMWATER DEPARTMENT

18TH ST. OUTFALL "C"
STORMWATER IMPROVEMENTS
BASELINE "C"

W.O. .
SHEET
11
OF 13



Scale
 1"=30' Horizontal
 1"=3' Vertical

5935(18th St. Outfall "C")

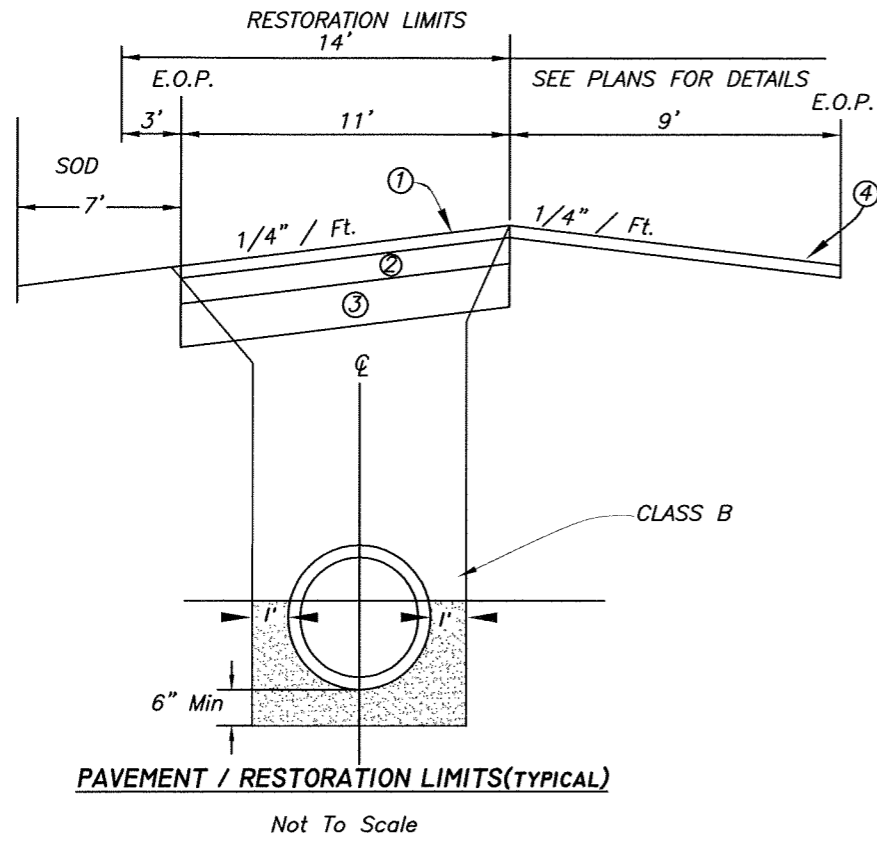
No.	DATE	REVISIONS	No.	DATE	REVISIONS
3			6		
2			5		
1			4		

DES: YB
 DRN:
 CKD: [Signature]
 DATE: 6/16/10

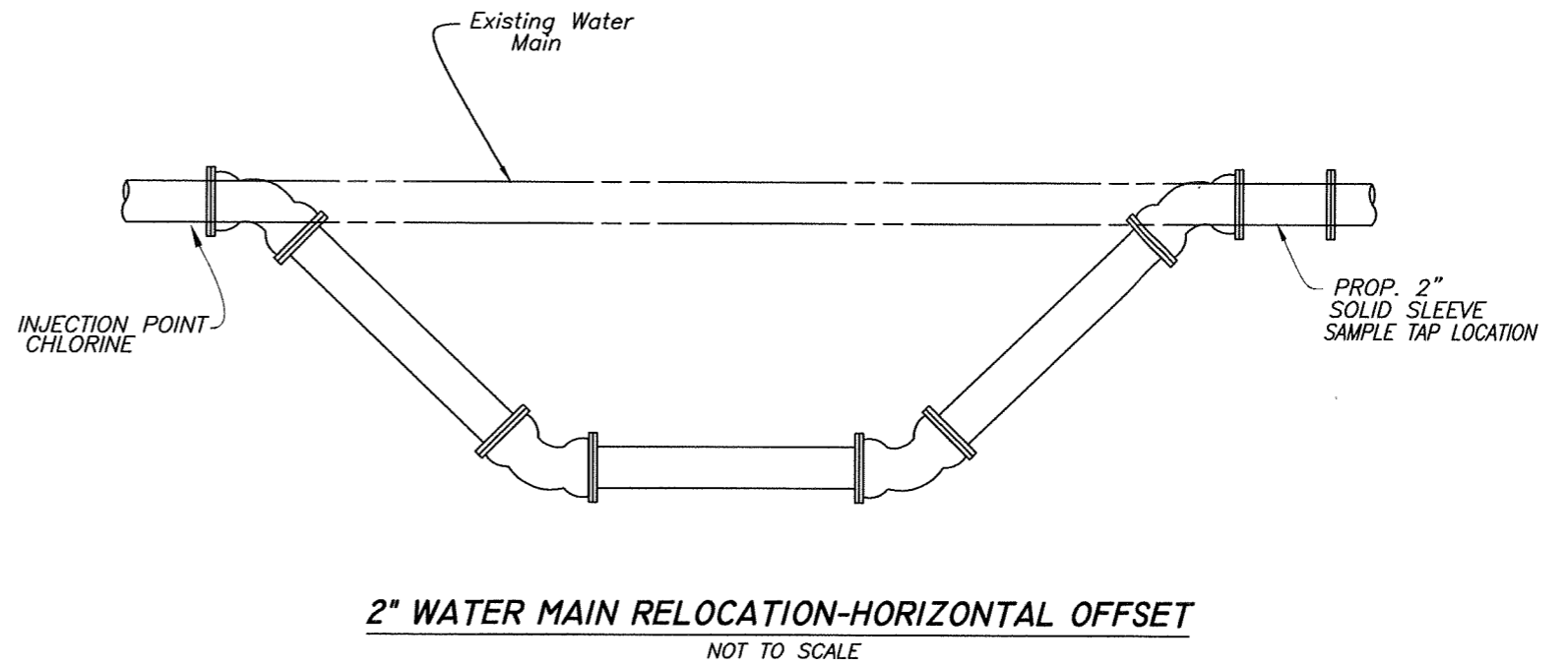
CITY of TAMPA
 STORMWATER DEPARTMENT

18TH ST. OUTFALL "C"
 STORMWATER IMPROVEMENTS
 BASELINE "C"

W.O. 5935
 SHEET
 12
 OF 13



- ① TYPE S-3 ASPHALT (1")
- ② TYPE S-1 ASPHALT (1-1/2")
- ③ CRUSHED CONCRETE BASE (8")
- ④ 1" MILL (S-3 OVERLAY)



2" WATER MAIN RELOCATION-HORIZONTAL OFFSET
NOT TO SCALE

18th St. Outfall "C"

No.	DATE	REVISIONS	No.	DATE	REVISIONS
3			6		
2			5		
1			4		

DES: YB
DRN: MP
CKD: [Signature]
DATE: 6/16/10

CITY of TAMPA
STORMWATER DEPARTMENT

18TH ST. OUTFALL "C"
PAVEMENT / RESTORATION LIMITS &
WATER MAIN OFFSET DETAILS

W.O. 5935
SHEET
13
OF 13