



# CITY OF TAMPA

Pam Iorio, Mayor

CONTRACT ADMINISTRATION DEPARTMENT

David L. Vaughn, AIA, Director

## ADDENDUM NO. 4

**DATE: August 26, 2010**

Contract 10-C-00050; Bruce B. Downs Water Transmission Main: Bearss Avenue to Cypress Preserve Boulevard

Bidders on the above referenced project are hereby notified that the following addendum is made to the Contract Documents. BIDS TO BE SUBMITTED SHALL CONFORM TO THIS NOTICE.

Item 1: Water Contract Pay Items

C1.10 Mobilization, page C-3; change the last sentence to read "Payment for Mobilization will be split into two payments (50% each) during the first two months of the project."

On page C-11, change the unit for bid items 2515, 2516, 2520 and 2522 from LF to EA.

C9.20 Pavement Restoration, page C-19, second paragraph; change "square yards" to read tons".

On page C-19, change the unit for bid items 9204 and 9206 to read "TN".

Item 2: Replace Proposal pages P-3R and P=6R with the attached pages P-3RR and P-6RR.

Item 3: Plans

Replace plan sheets 8, 40 and 43 with the attached sheets 8, 40 and 43.

Item 4: Responses to RFIs

Note #5 on most all of the plan and profile plan sheets instructs us to cap and fill the existing 54" PCCP with water, will the contractor be responsible to pay for the water and will a bid item to furnish a 54" cap or plug be added to the bid form? Please clarify.

*Water for pressure testing, chlorination and flushing will be supplied by the City. If the Contractor requires water for temporary offices, equipment washing, etc., a water service will need to be applied for and appropriate fees paid.*

*Refer to Contract Item C2.50. The sealing of the open ends in the 54" PCCP pipe are included under Bid item 2522.*

Plan sheet 16, the micro-tunnel beneath Cypress Creek, the note on the plan tells us the tunnel is 385LF and the bid form quantity is the same but, if you look at the stationing in both plan and profile views it does not equal that length, please clarify.

*The casing quantity does not match the stationing because additional casing was added to the micro-tunnel. This was done at the request of the County to be certain that the micro-tunnel can be completed without impacting the palm trees on both sides of the creek.*

Will the use of Perma-lok steel pipe be allowed for use in lieu of steel casing at the jack and bores and micro-tunnel? The Perma-lok steel pipe has become the preferred casing material for going under railroads with and is a gasketed pipe and would not require welding at the joints. Please clarify.

*The Perma-lok steel casing is not an approved product in the Water Department's technical specs. If the bidder feels Perma-lok is an equal or better product they may include Perma-lok in their bid. However, the product will be reviewed and there is no guarantee that the product will be accepted.*

Plan sheet 37, the plan and profile view for an 'ALTERNATE TIE-IN', how is this being addressed in the bid quantities?

*The alternate tie-in was originally included in the plans in the event this project started prior to the County Contractor's installation of their section of the 48" line. Since the County's Contractor has already begun the construction of the 48" WM, the alternate detail is no longer needed.*

With regard to bid item no. 2205, 12" HDPE, it will be next to impossible to get a 12" HDPE pipe installed to conform to the vertical deflections as shown in the details at the required locations for the intended use of blow-offs in the short distances as the drawings show. This is a poor design and should be changed to reflect open cut utilizing ductile iron pipe for these blow-offs. Please review.

*The 12" HDPE would be constructed more on a straight plane across the road with the vertical rise constructed with ductile iron pipe and fittings.*

Bid item 2205, 12" HDPE, I can only find 443LF, bid form shows 537LF, please clarify.

*The quantity for 12" HDPE in Bid Item 2205 will be revised to 443 LF.*

Bid item 2200, 2" HDPE, I find 674LF, bid form has 500LF, please clarify.

*The quantity for 2" HDPE has been reviewed and the amount of pipe included in the design is 503 LF.*

Can we expect to be reimbursed our bond costs from bid item 1101, MOBILIZATION ? Please clarify.

*The bid item 1101 for mobilization includes all incidental items necessary for project start-up. There will be no separate payment or reimbursement for insurance, bonding, etc.*

With regard to bid item 1101, MOBILIZATION, the measurement and payment section tells us we will be paid lump sum for this item. Will this payment, for the current total value of \$350,000.00 (Three hundred fifty-thousand dollars and no-cents), be paid all at once? Please clarify.

*The lump sum payment of \$350,000.00 for mobilization will not be at once. It will be split into two payments (50% each) during the first two months of the project.*

What size jumper will be required to flush the proposed 48" DIP WM? The spec calls for a flow rate of 2 1/2' per second, this will require a substantial connection.

*The City will not dictate the means and methods necessary to fill and flush the 48" WM, but an option for filling the pipe would be the 12" blow-off pipe located near the south end. There is also an existing fire hydrant nearby. The pipe would also only be filled in sections rather than trying to fill the entire length at one time. The Contractor will be responsible for providing all piping, fittings, hoses, etc. to perform the filling and flushing operations.*

Per the soil borings we may encounter muck during construction of the 48" DIP WM, further more per the back fill detail we are to use backfill that is free of all organics and clay. When we encounter unsuitable material how will we be compensated?

*The excavation of material is included in the various pay items for pipe installation.*

This addendum shall be included in and attached to the inside cover of the Contract Documents by and upon which bids are submitted.

All other provisions of the Contract Documents and Specifications not in conflict with this Addendum shall remain in full force and effect. Questions are to be e-mailed to Contract Administration@tampagov.net.

*Jim Greiner*

---

Jim Greiner, P.E., Contract Manager

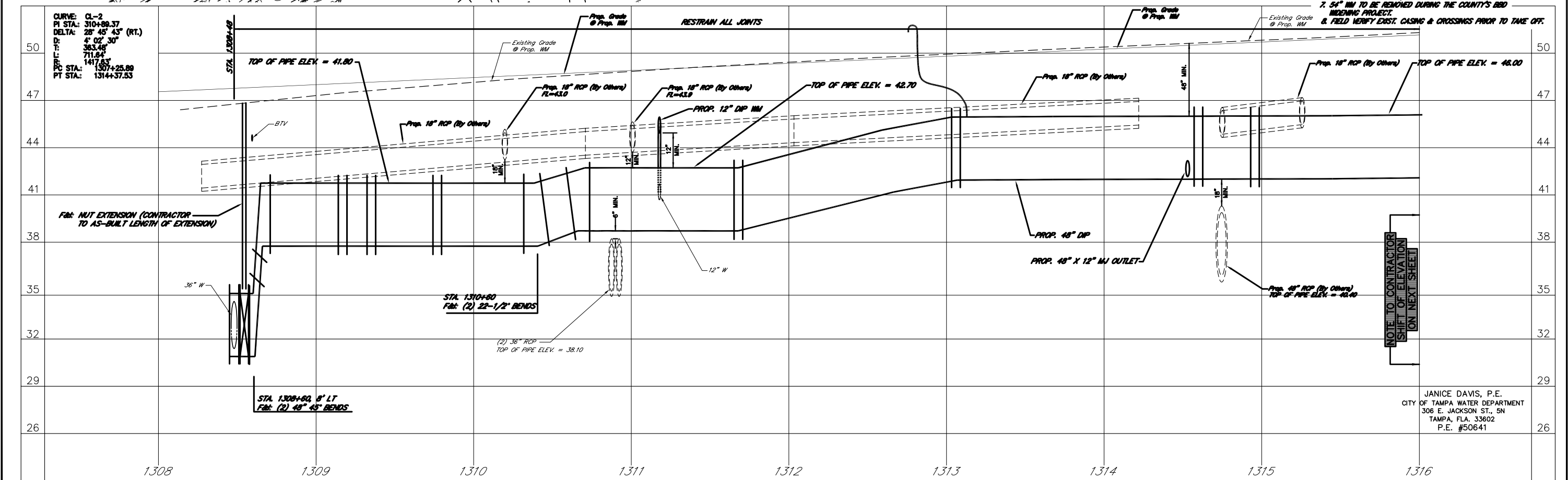
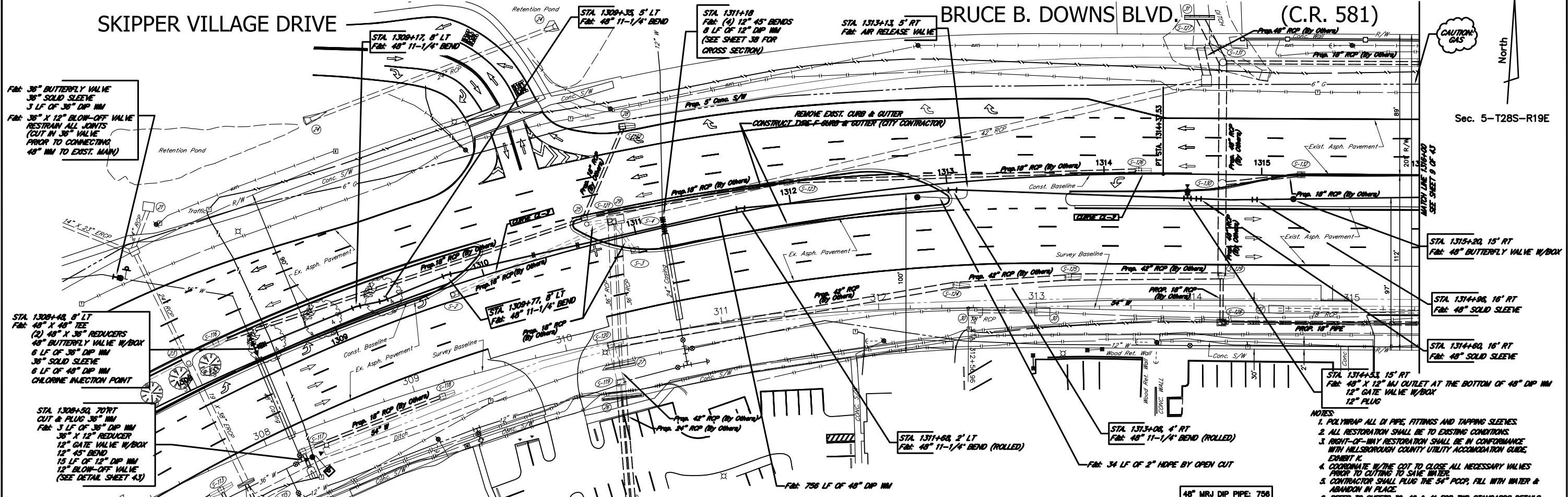
| Item No. | Description                             | Unit | Approx. Quantity | Unit Price in Words   | Unit Price    | Total Computed Price |
|----------|---|------|------------------|---|---------------|----------------------|
| 1101     | Mobilization                            | L.S. | 1                | Three hundred forty six thousand nine hundred thirty dollars and 89/100 | \$ 346,930.89 | \$ 346,930.89        |
| 1201     | Maintenance of Traffic                  | L.S. | 1                |   | \$            | \$                   |
| 1202     | Variable Message Boards                 | E.D. | 300              |   | \$            | \$                   |
| 1203     | Traffic Control Officer                 | M.H. | 1,000            |   | \$            | \$                   |
| 2106     | 12" ductile iron pipe                   | L.F. | 48               |   | \$            | \$                   |
| 2108     | 16" ductile iron pipe                   | L.F. | 127              |   | \$            | \$                   |
| 2112     | 36" ductile iron pipe                   | L.F. | 9                |   | \$            | \$                   |
| 2116     | 48" MRJ ductile iron pipe               | L.F. | 3,218            |   | \$            | \$                   |
| 2118     | 48" PO ductile iron pipe                | L.F. | 14,005           |   | \$            | \$                   |
| 2200     | 2" HDPE                                 | L.F. | 503              |   | \$            | \$                   |
| 2205     | 12" HDPE                                | L.F. | 443              |   | \$            | \$                   |
| 2311     | 60" Steel Casing by Jack & Bore         | L.F. | 140              |   | \$            | \$                   |
| 2312     | 60" Steel Casing by Micro-Tunnel        | L.F. | 385              |   | \$            | \$                   |
| 2401     | Remove 4" - 12" diameter abandoned pipe | L.F. | 25               |   | \$            | \$                   |
| 2402     | Remove > 12" diameter abandoned pipe    | L.F. | 60               |   | \$            | \$                   |

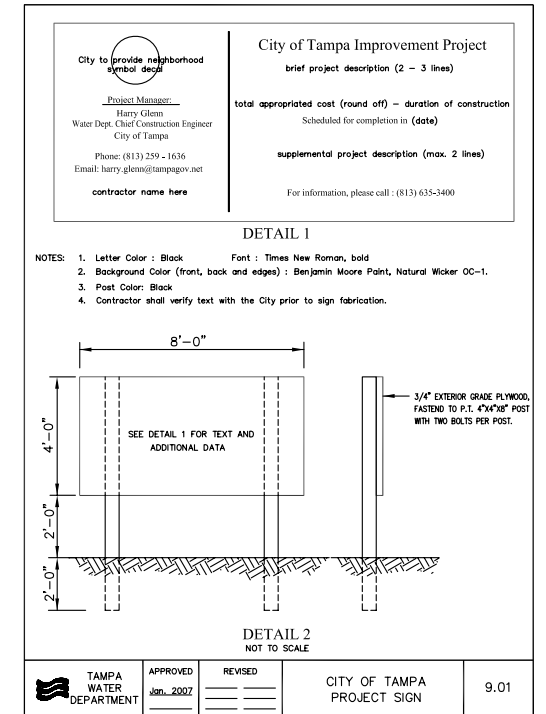
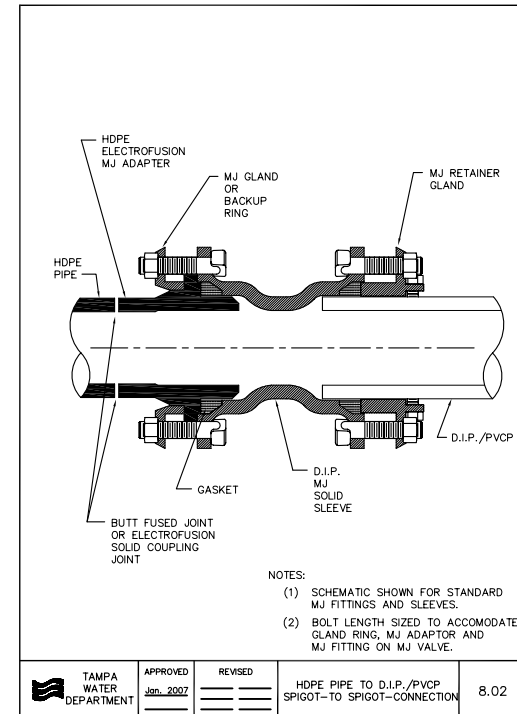
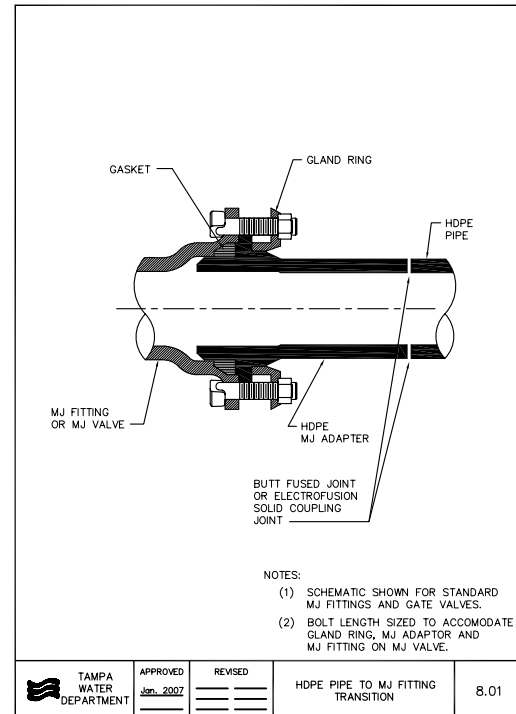
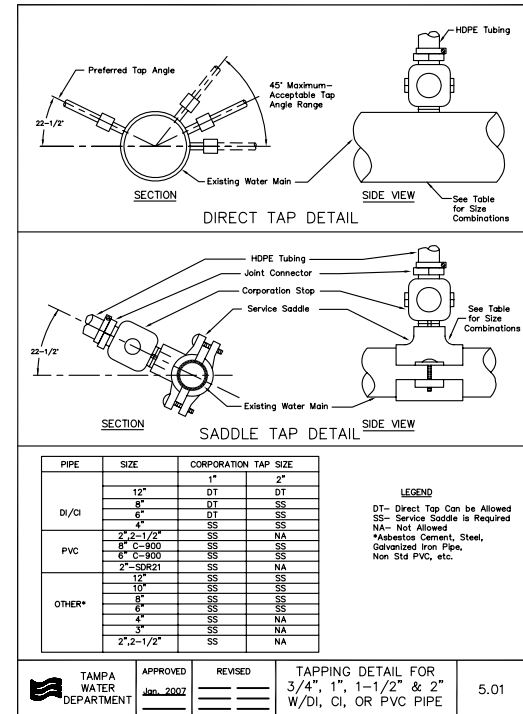
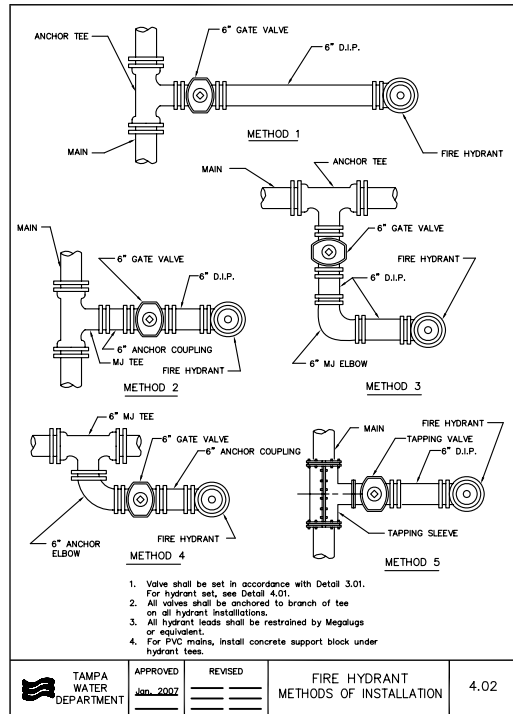
| Item No. | Description                    | Unit    | Approx. Quantity | Unit Price in Words | Unit Price | Total Computed Price |
|----------|--------------------------------|---------|------------------|---------------------|------------|----------------------|
| 9002     | 2" Blow-off Assembly           | EA.     | 1                |                     | \$         | \$                   |
| 9003     | Air Release Valve              | EA.     | 15               |                     | \$         | \$                   |
| 9201     | Approved Base Material         | CU. YD. | 1,500            |                     | \$         | \$                   |
| 9204     | Restore asphalt                | TONS    | 1,500            |                     | \$         | \$                   |
| 9206     | Restore FD asphalt             | TONS    | 10               |                     | \$         | \$                   |
| 9216     | Signalization loops - Type A   | EA.     | 2                |                     | \$         | \$                   |
| 9217     | Signalization loops - Type F   | EA.     | 4                |                     | \$         | \$                   |
| 9218     | Ped x-ing push buttons         | EA.     | 4                |                     | \$         | \$                   |
| 9300     | Restore concrete curb - Type E | L.F.    | 2,100            |                     | \$         | \$                   |
| 9301     | Restore concrete curb - Type F | L.F.    | 4,350            |                     | \$         | \$                   |
| 9303     | Sidewalk restoration           | SQ. YD. | 12               |                     | \$         | \$                   |
| 9304     | Restore brick pavers           | SQ. YD. | 57               |                     | \$         | \$                   |
| 9305     | Sod restoration                | SQ. YD. | 43,881           |                     | \$         | \$                   |
| 9310     | Remove Guardrail               | L.F.    | 220              |                     | \$         | \$                   |
| 9310     | Replace Guardrail              | L.F.    | 220              |                     | \$         | \$                   |
| 9311     | Concrete median restoration    | SQ. YD. | 679              |                     | \$         | \$                   |

SKIPPER VILLAGE DRIVE

BRUCE B. DOWNS BLVD. (C.R. 581)

Sec. 5-T28S-R19E



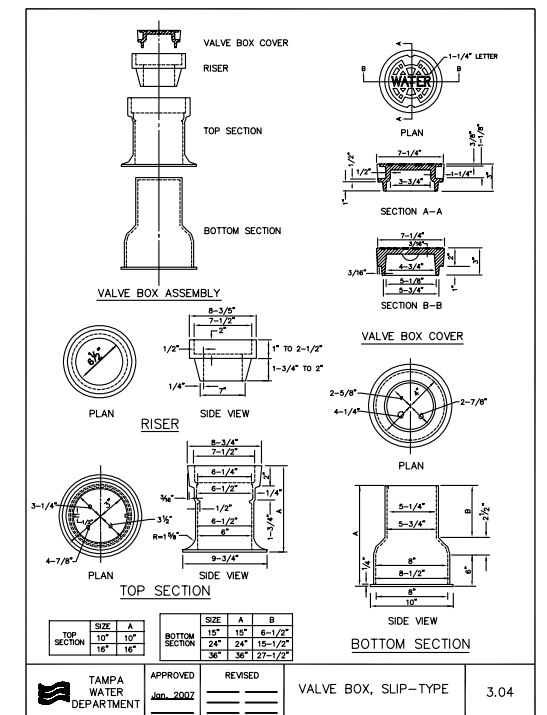
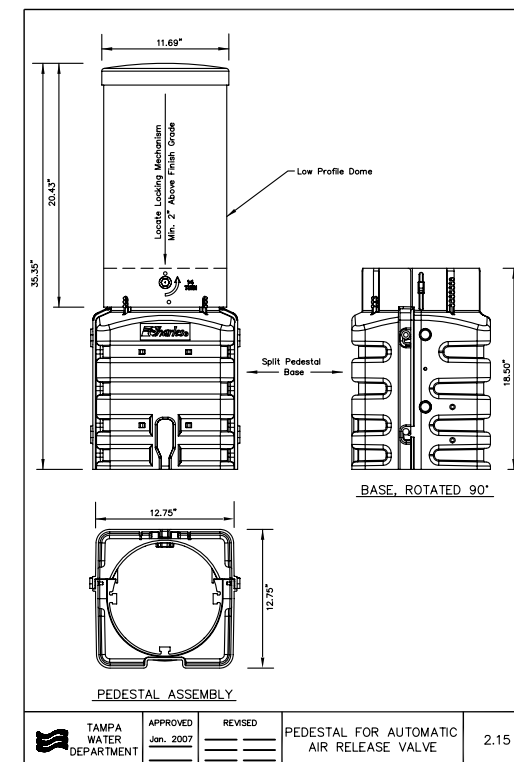
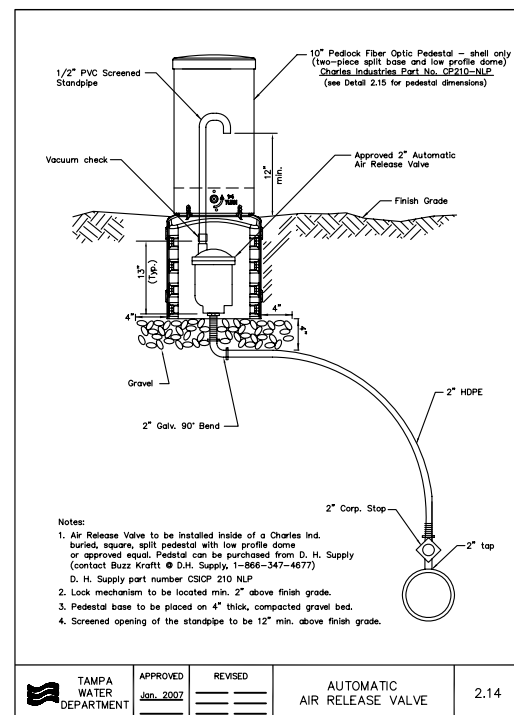
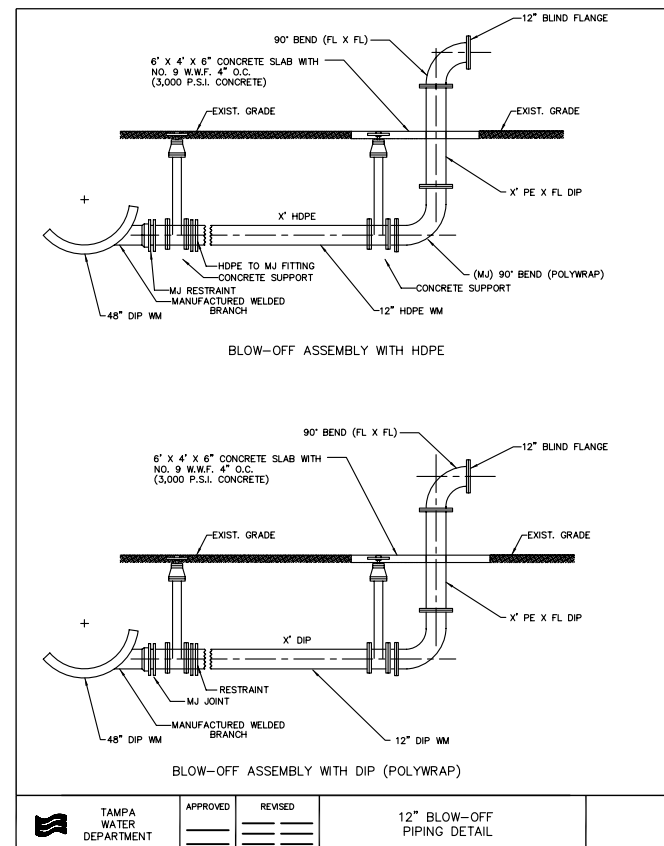


**Ductile Iron Specials**  
 Tangential Welded-On Outlets for Ductile Iron Pipe

Pipe manufacture to furnish tangential welded-on outlets in certain diameter. Pipe with tangential outlets can often be rotated with the outlets on bottom for blow-offs or on top for air release. Minimum pressure classes and location of outlets are the same as for regular welded-on outlets. This is a shop fabricated product and is not intended for field fabrication. Parent and outlet pipe are normally furnished cement lined in accordance with ANSI/AWWA C104/A21.4. Contact the pipe manufacturer if findings other than cement linings are required.

| Parent Pipe Diameter in. | Outlet Diameter in. | Minimum Nominal Thickness** Outlet in. | Rated Working Pressure PSI | Minimum Location Outlet to Parent Pipe End in. | Standard Dimension Center to Socket in. |
|--------------------------|---------------------|--|----------------------------|--|---|
| 36                       | 4                   | 0.58/0.32                              | 250                        | 14-1/2   | 20                                      |
| 36                       | 6                   | 0.58/0.34                              | 250                        | 15-1/2   | 22                                      |
| 36                       | 8                   | 0.58/0.36                              | 250                        | 16-1/2   | 24                                      |
| 36                       | 10                  | 0.58/0.38                              | 250                        | 17-1/2   | 25                                      |
| 36                       | 12                  | 0.58/0.40                              | 250                        | 20   | 25-1/2                                  |
| 36                       | 14                  | 0.58/0.42                              | 250                        | 23   | 26-1/2                                  |
| 36                       | 16                  | 0.58/0.43                              | 250                        | 26   | 26-1/2                                  |
| 36                       | 18                  | 0.58/0.44                              | 250                        | 29   | 26-1/2                                  |
| 36                       | 20                  | 0.58/0.45                              | 250                        | 32-1/2   | 26-1/2                                  |
| 36                       | 24                  | 0.58/0.47                              | 250                        | 39   | 26-1/2                                  |
| 42                       | 4                   | 0.65/0.32                              | 250                        | 14-1/2   | 21-1/2                                  |
| 42                       | 6                   | 0.65/0.34                              | 250                        | 15-1/2   | 23-1/2                                  |
| 42                       | 8                   | 0.65/0.36                              | 250                        | 16-1/2   | 25-1/2                                  |
| 42                       | 10                  | 0.65/0.38                              | 250                        | 17-1/2   | 27                                      |
| 42                       | 12                  | 0.65/0.40                              | 250                        | 20   | 28                                      |
| 42                       | 14                  | 0.65/0.42                              | 250                        | 23   | 28-1/2                                  |
| 42                       | 16                  | 0.65/0.43                              | 250                        | 26   | 29                                      |
| 42                       | 18                  | 0.65/0.44                              | 250                        | 29   | 29-1/2                                  |
| 42                       | 20                  | 0.65/0.45                              | 250                        | 32-1/2   | 29-1/2                                  |
| 42                       | 24                  | 0.65/0.47                              | 250                        | 39   | 30                                      |
| 42                       | 30                  | 0.65/0.51                              | 250                        | 48   | 30                                      |
| 48                       | 4                   | 0.72/0.32                              | 250                        | 14-1/2   | 22-1/2                                  |
| 48                       | 6                   | 0.72/0.34                              | 250                        | 15-1/2   | 25                                      |
| 48                       | 8                   | 0.72/0.36                              | 250                        | 16-1/2   | 27                                      |
| 48                       | 10                  | 0.72/0.38                              | 250                        | 17-1/2   | 28-1/2                                  |
| 48                       | 12                  | 0.72/0.40                              | 250                        | 20   | 30                                      |
| 48                       | 14                  | 0.72/0.42                              | 250                        | 23   | 31                                      |
| 48                       | 16                  | 0.72/0.43                              | 250                        | 26   | 31-1/2                                  |
| 48                       | 18                  | 0.72/0.44                              | 250                        | 29   | 32                                      |
| 48                       | 20                  | 0.72/0.45                              | 250                        | 32-1/2   | 32-1/2                                  |
| 48                       | 24                  | 0.72/0.47                              | 250                        | 39   | 33                                      |

**TAMPA WATER DEPARTMENT** APPROVED Jan 2007 REVISED \_\_\_\_\_ TANGENTIAL WELDED-ON OUTLETS FOR DUCTILE IRON PIPE



JANICE DAVIS, P.E.  
 CITY OF TAMPA WATER DEPARTMENT  
 306 E. JACKSON ST. SN  
 TAMPA, FLA. 33602  
 P.E. #50641

