



CITY OF TAMPA

Bob Buckhorn, Mayor

CONTRACT ADMINISTRATION DEPARTMENT

David L. Vaughn, AIA, Director

ADDENDUM NO. 1

DATE: September 29, 2011

Contract 11-C-00060; 30th Street and Hillsborough Avenue Stormwater Quality Improvements

Bidders on the above referenced project are hereby notified that the following addendum is made to the Contract Documents. BIDS TO BE SUBMITTED SHALL CONFORM TO THIS NOTICE.

Item 1: **Specifications**

Replace proposal pages P-3 through P-6 with page P-3R through P-5R

Item 2: **Plans**

Replace pages 5, 6, 7, 8, 9, 10, 11, 12, 13, 14, 15, 16 and 25 with the attached pages 5, 6, 7, 8, 9, 10, 11, 12, 13, 14, 15, 16 and 25 Revised 9-26-11

Item 3: **Questions and Responses to RFIs**

Question: Per plans the following structures ST1, ST2, ST3, ST3A, ST4, ST5, ST6, ST6A, ST6B, ST7C, ST7D, ST6C, ST6D, ST6E, ST7A, ST7B, ST7E, ST5A have no size given on plans. But the bid forms show sizes, can you give sizes for these structure numbers?

Response: Construction plans currently depict structure types, along with structure tops and inverts of proposed stormwater pipe. As indicated in the following question, FDOT Type J, 7' ID structures are proposed.

Question: On your bid form you show 7'ID structures (non-common size) can 8'ID be used?

Response: 7' ID structures are noted in the plan set. However, the Contractor can substitute 8'ID structures as long as supporting documentation is provided to the City and Engineer that the 8' ID structures will fit in place of the 7'ID where the Contractor is proposing to substitute the 8' ID structure and all resulting conflicts are addressed. Additionally, the Contractor will be required to provide the cost savings differential to the City associated with the substitution of 8' ID for the 7'ID structures.

306 E. Jackson Street, 4N • Tampa, Florida 33602 • (813) 274-8456 • FAX: (813) 274-8080

Question: Structure #ST6C, ST6D and ST5A state cast in place. Is this correct? (Does this mean complete structure?)

Response: Contractor may substitute precast structure in place of cast-in-place structure for the conflict structures ST5A, ST6C and ST6D as a construction option. If pre-cast structure is to be substituted, Contractor will need to remove and replace existing utilities per City of Tampa standards and at the existing elevation of the utility in conflict. Contractor will need to field verify elevation of existing utilities and core pre-cast structures in the field. Contractor to provide the alternative costs for work associated with substitution of pre-cast structure in the appropriate places within the schedule of values.

Question: Structure ST7 states 6x8 access hatch (please confirm type of hatch (i.e. steel galvanized, aluminum, traffic or non traffic, double door, single door and any other items on the hatch) or MFG information.

Response: Access hatch to be US Foundry Manufactured, double hatch, H20 load traffic bearing lockable hatch, Model AHD or approved equal.

Question: On conflict structures on page 22 of plans shows pipe up off the bottom of the structure with a sump. (Please provide sump depths for all conflict structures.)

Response: Existing utilities are shown on the construction plans based upon best available information provided by the City of Tampa. Construction plan Sheet 22 provides the City standard guidelines for conflict manholes. Dimensions of sump depths can be determined from the information provided in the plans.

Question: It was stated at the pre-bid meeting that the unsuitable material item was from the pond excavation. What is the nature and/or quality of this material that deems it unsuitable? Is it muck or are there other contaminants that must be considered?

Response: Please refer to the attached Geotechnical report for description of the soils encountered within the ponds. The quantity of material included in the schedule of values assumes a worst case scenario of all of the materials to be excavated in the area of new pipe construction and within the ponds to be unsuitable.

Question: Are there any soil borings available in the pond and surrounding areas?

Response: Please see the attached geotechnical soil report within pond area re-grading.

Question: Is there any geotechnical information along the pipe line and in the pond areas available?

Response: Please see the attached limited geotechnical soil report.

Question: Is there any information on the groundwater levels?

Response: Please see the attached limited geotechnical soil report.

Question: Are the retention ponds designed to be dry ponds?

Response: The existing retention ponds were not designed as a part of this project. Please refer to the survey information contained within the construction plans for the elevations of the existing outfalls with reference to the pond bottoms.

Question: The specifications allow for Seeding – the drawings only indicate sod is allowed. Is seeding acceptable in areas that are not sloped?

Response: Seed and mulch will be acceptable in disturbed areas of the ponds that are not sloped and are more than 15' away from a proposed structure modification.

Question: The bid form shows sidewalk by the Linear Foot; however, the Measurement and Payment Section (Page C-13) indicates it should be paid by the SY, which is correct?

Response: Sidewalk measurement and payment will be based upon SY. 6" concrete sidewalk is required through driveway sections with 4" concrete sidewalk to be constructed for other sidewalk replacements. Quantities in bid proposal sheet have been revised accordingly.

Question: Bid Item 0016-3-1 FC-9.5 Asphalt is for 455 tons Plans call for 1" FC-9.5 & Limerock Qty is 3319 SY therefore if limerock qty is correct, the FC-9.5 would be $3319 \text{ SY} \times 110 \text{ Lbx/IN/SY} / 2000 \text{ LBS/TON} = 182.54 \text{ tons}$.

Response: Quantity for 1" FC-9.5 is not required for on-site parking lot therefore total SY for 1" FC-9.5 is estimated at 1804 SY. Converting to tons results in total of 101 tons utilizing conversion factor of 112 lbs./SY./in. and 2000 lbs./ton. Quantity in bid sheet has been revised.

Question: Bid Item 0016-3-2 SP-12.5 Asphalt is for 1359 tons Plans call for 2" SP-12.5 & Limerock Qty is 3319 SY therefore if limerock qty is correct, the FC-9.5 would be $3319 \text{ SY} * 2" * 110 \text{ Lbx/IN/SY} / 2000 \text{ LBS/TON} = 365.09 \text{ tons}$.

Response: Total Quantity for 2" SP-12.5 is estimated at 3319 SY. Converting to tons results in total of 372 tons utilizing conversion factor of 112 lbs./SY./in. and 2000 lbs./ton.

Question: What type of asphalt & base would be required station 245+00 to 253+39 at existing parking lot?

Response: Existing parking lot pavement replacement will not require the 1" min. friction course layer. Pavement replacement shall conform to "Typical Pavement Section Asphalt Replacement" detail on sheet 20 of the construction plans minus the friction course layer.

Question: Do you have any soil boring info?

Response: Please see the attached limited geotechnical report.

Question: From STA 245+00 to 253+39 we are to remove and replace fence "in kind." Could we use rusty old fence.

Response: Replacement fencing is to be replaced "in like kind" and at a minimum to FDOT type B fencing per FDOT Index 802. In addition, existing fencing with barbed wire is to be replaced "in like kind" per FDOT Index 802. Contract Items document for Contract Item 0555-2-6 shall be revised to remove reference to "PVC Coated Chain Link Fence" and revised to read "Fencing, Type B, 5.1'-6.0', Standard".

Questions noted by Applied Sciences Consulting Inc. from Pre-Bid Meeting. Questions not officially submitted via Email to COT:

Question: Are contractors to include costs for ROW Use and MOT Permits and if so, what are the fees?

Response: ROW Use and MOT Permits will be required, however it is our understanding that the fees will be waived as the project is a City project.

Question: Can crushed concrete be substituted for limerock base?

Response: Crushed concrete is an acceptable substitution for limerock base.

Other items being modified via this Addendum:

1. A quantity of 60" ADS pipe has been replaced with RCP pipe due to the existence of conflict structure ST7E.
2. An additional 6" WM relocation has been added on plan sheets 9 and 10 within the ROW of McBerry Street.
3. Please delete the first two paragraphs under Bedding in the Trench Detail on Sheet 19 of the construction plans and substitute the following language:

Bedding material shall meet project specifications for Class B and Class C bedding, or per Section 125 of the FDOT Standard Specifications for Road and Bridge Construction for RCP and per the ADS Drainage Handbook Section 5.0 (Installation), unless otherwise approved by the City Engineer.

4. Structure ST10 has been estimated at an approximate location above an existing manhole just west of the existing H inlet near the intersection of Hillsborough Avenue and 30th Street.

All other provisions of the Contract Documents and Specifications not in conflict with this Addendum shall remain in full force and effect. Questions are to be e-mailed to Contract Administration@tampagov.net.

Jim Greiner

Jim Greiner, P.E., Contract Management Supervisor

Item No.	Description	Unit	Est Qty	Unit Price in Words	Unit Price	Total Price
0101-1	Mobilization	LS	1		\$	\$
0102-1	Maintenance of Traffic	LS	1		\$	\$
0103-1	Contingency	LS	1		\$	\$
0001-1	Regular Excavation	CY	42,973		\$	\$
0010-6	6" Diameter Ductile Iron Pipe - Water Main	LF	30		\$	\$
0010-8	8" Diameter Ductile Iron Pipe - Water Main	LF	265		\$	\$
0010-60	60" Diameter Ductile Iron Pipe - Storm Pipe	LF	34		\$	\$
0011-4	4" SDR35 PVC Pipe - Wastewater Lateral	LF	121		\$	\$
0016-1-12	Subbase Stabilized (12")	SY	3,353		\$	\$
0016-2-2	Limerock Base	SY	3,319		\$	\$
0016-3-1	Type S-3 (FC-9.5) Asphaltic Concrete	TN	101		\$	\$
0016-3-2	Type S-1 (SP-12.5) Asphaltic Concrete	TN	367		\$	\$
0016-4-8	Plain Cement Concrete Pavement, 8" - Driveway Replacement	SY	24		\$	\$
0017-1	Sodding & Seeding	SY	47,304		\$	\$
0027-1	Removal of Existing Pavement	SY	3,722		\$	\$
0027-2	Removal and Disposal of Unsuitable Materials	CY	32,153		\$	\$
0067-8	8" Steel Casing - Wastewater Lateral Casing	LF	121		\$	\$
0067-16	16" Steel Casing - Wastewater Lateral Casing	LF	33		\$	\$
0067-24	24" Steel Casing - Wastewater Lateral Casing	LF	11		\$	\$
0077-1	Silt Fence Staked (Type III)	LF	6,012		\$	\$
0077-2	Soil Tracking Prevention Device	EA	2		\$	\$
0077-3	Inlet Protection System	EA	21		\$	\$
0116-1	Tree Removal	LS	1		\$	\$
0400-1-18	Mitered End Section Round 18" CD	EA	2		\$	\$

Item No.	Description	Unit	Est Qty	Unit Price in Words	Unit Price	Total Price
0400-1-24	Mitered End Section Round 24" CD	EA	2		\$	\$
0400-1-36	Mitered End Section Round 36" CD	EA	4		\$	\$
0400-1-54	Mitered End Section Round 54" CD	EA	1		\$	\$
0400-2-1	Control Structure, Pond 1	EA	1		\$	\$
0400-2-2	Masonry Walls, Pond 1	EA	2		\$	\$
0425-11-05000	Ditch Bottom Inlet, City of Tampa Type E, Modified <10'	EA	4		\$	\$
0425-11-10009	Ditch Bottom Inlet, Type J Alt B 9'x8', <10'	EA	1		\$	\$
0425-20-10005	Manhole, Type J Alt A 5'D, <10'	EA	1		\$	\$
0425-30-10010	Junction Box, Type J Alt A 10'D, <10'	EA	1		\$	\$
0425-30-10107	Junction Box, Type J Alt A 7'D, >10'	EA	3		\$	\$
0425-30-10110	Junction Box, Type J Alt A 10'D, >10'	EA	1		\$	\$
0425-31-10095	Junction Box, Type J Alt B 9'x5', <10'	EA	2		\$	\$
0425-31-10097	Junction Box, Type J Alt B 9'x7', <10'	EA	1		\$	\$
0425-40-10007	Junction Box (Type J Alt A, 7'D), Drainage-Utility, <10'	EA	10		\$	\$
0425-40-10107	Junction Box (Type J Alt A, 7'D), Drainage-Utility, >10'	EA	1		\$	\$
0425-41-10095	Junction Box, (Type J-Alt B 9'x5'), Drainage-Utility <10'	EA	3		\$	\$
0425-50	Adjust Manhole Top	EA	3		\$	\$
0430-1-15	15" RCP (CD, Class III) - Storm Pipe	LF	42		\$	\$
0430-1-18	18" RCP (CD, Class III) - Storm Pipe	LF	166		\$	\$
0430-1-60	60" RCP (CD, Class III) - Storm Pipe	LF	1,300		\$	\$
0430-2-18	14"x23" ERCP (CD, Class HE III) - Storm Pipe	LF	84		\$	\$
0430-2-60	48"x76" ERCP (CD, Class HE III) - Storm Pipe	LF	463		\$	\$
0520-110	Concrete Curb & Gutter, Type F	LF	104		\$	\$
0522-4	Concrete Sidewalk, 4" Thick	SY	343		\$	\$

Item No.	Description	Unit	Est Qty	Unit Price in Words		Unit Price		Total Price
0522-6	Concrete Sidewalk, 6" Thick	SY	87		\$		\$	
0555-2-6	Fencing, Type B, 5.1'-6.0', Standard	LF	1,016		\$		\$	
0810-60	60" ADS N-12 HP Pipe - Storm Pipe	LF	49		\$		\$	
0820-60	Plastifab Flaggate - 60"	LS	1		\$		\$	
	Precast Utility Replacement							
0010-8	8" Diameter Ductile Iron Pipe - Force Main	LF	18		\$		\$	
0010-8	12" Diameter Ductile Iron Pipe - Force Main	LF	11		\$		\$	
TOTAL CONSTRUCTION COST					\$		\$	



0 15 30
 1"=30'
 ATLAS F-14
 SEC 5, T29S, R19E

REMOVE AND REPLACE EX. PAVEMENT AREA IN LIKE KIND. SEE PAVEMENT REPLACEMENT DETAIL SHEET 20

CONTRACTOR SHALL USE CAUTION IN AREA OF EX. 8" CI WATER MAIN CROSSING WHEN EXCAVATING & INSTALLING STORM PIPES AND STRUCTURES.

SEWER LATERAL NOTE:
 CONTRACTOR IS RESPONSIBLE FOR FIELD VERIFYING EX. SEWER LATERAL CONNECTIONS AND CROSSINGS AT PROPOSED STORM PIPE. CONTRACTOR TO USE CAUTION WITHIN VICINITY OF EX. LATERALS. IF DAMAGED, CONTRACTOR TO REPLACE EX. LATERALS WITH SDR35 PVC PIPE AND CONNECT TO EX CLAY OR CONCRETE PIPES VIA FERNCO 1000 FLEXIBLE COUPLINS WITH STAINLESS STEEL SHEAR RING OR APPROVED EQUAL

OPEN CUT 30TH ST. FROM STA 30+19.18 TO 33+86.19 ALONG C OF PROP. 60" RCP STORM SEWER. CONTRACTOR SHALL RESTORE ASPHALT TO ORIGINAL LINE AND GRADE. ASPHALT RESTORATION SHALL BE IN ACCORDANCE TO CITY OF TAMPA TRANSPORTATION DEPARTMENT STANDARDS.

PROTECT IN PLACE EX. 8" WM. IF DAMAGED, CONTRACTOR TO REPLACE WITH 8" DIP WITH RESTRAINED JOINTS PER CITY STANDARDS.

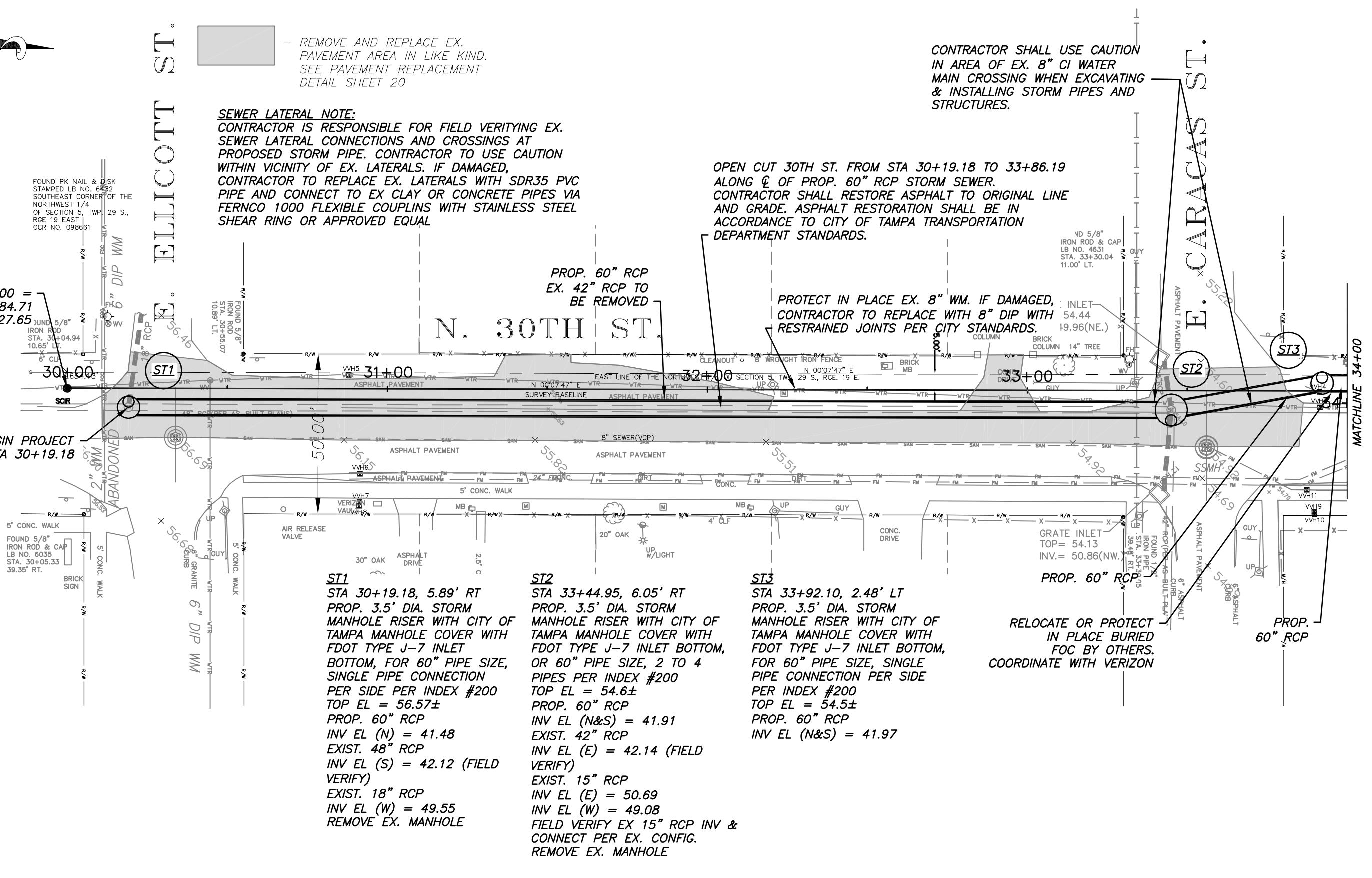
FOUND PK NAIL & DISK STAMPED LB NO. 64522 SOUTHEAST CORNER OF THE NORTHWEST 1/4 OF SECTION 5, TWP. 29 S., RGE 19 EAST CCR NO. 098661

STA 30+00 =
 N: 1329484.71
 E: 518527.65

BEGIN PROJECT
 STA 30+19.18

FOUND 5/8" IRON ROD & CAP LB NO. 6035 STA. 30+05.33 39.35' RT.

ND 5/8" IRON ROD & CAP LB NO. 4631 STA. 33+30.04 11.00' LT.



ST1
 STA 30+19.18, 5.89' RT
 PROP. 3.5' DIA. STORM MANHOLE RISER WITH CITY OF TAMPA MANHOLE COVER WITH FDOT TYPE J-7 INLET BOTTOM, FOR 60" PIPE SIZE, SINGLE PIPE CONNECTION PER SIDE PER INDEX #200
 TOP EL = 56.57±
 PROP. 60" RCP
 INV EL (N) = 41.48
 EXIST. 48" RCP
 INV EL (S) = 42.12 (FIELD VERIFY)
 EXIST. 18" RCP
 INV EL (W) = 49.55
 REMOVE EX. MANHOLE

ST2
 STA 33+44.95, 6.05' RT
 PROP. 3.5' DIA. STORM MANHOLE RISER WITH CITY OF TAMPA MANHOLE COVER WITH FDOT TYPE J-7 INLET BOTTOM, OR 60" PIPE SIZE, 2 TO 4 PIPES PER INDEX #200
 TOP EL = 54.6±
 PROP. 60" RCP
 INV EL (N&S) = 41.91
 EXIST. 42" RCP
 INV EL (E) = 42.14 (FIELD VERIFY)
 EXIST. 15" RCP
 INV EL (E) = 50.69
 INV EL (W) = 49.08
 FIELD VERIFY EX 15" RCP INV & CONNECT PER EX. CONFIG.
 REMOVE EX. MANHOLE

ST3
 STA 33+92.10, 2.48' LT
 PROP. 3.5' DIA. STORM MANHOLE RISER WITH CITY OF TAMPA MANHOLE COVER WITH FDOT TYPE J-7 INLET BOTTOM, FOR 60" PIPE SIZE, SINGLE PIPE CONNECTION PER SIDE PER INDEX #200
 TOP EL = 54.5±
 PROP. 60" RCP
 INV EL (N&S) = 41.97

RELOCATE OR PROTECT IN PLACE BURIED FOC BY OTHERS. COORDINATE WITH VERIZON

No.	DATE	REVISIONS
1	9/26/11	RFI REVISION - PIPE MATERIAL, ST10, WM

STATE OF FLORIDA CERTIFICATE AUTHORIZATION NO. 00026527
AppliedSciences
 APPLIED SCIENCES CONSULTING, INC.
 5808 BRECKENRIDGE PARKWAY, SUITE A
 TAMPA, FLORIDA 33610
 PH: (813) 622-6400 ~ FAX: (813) 434-2454

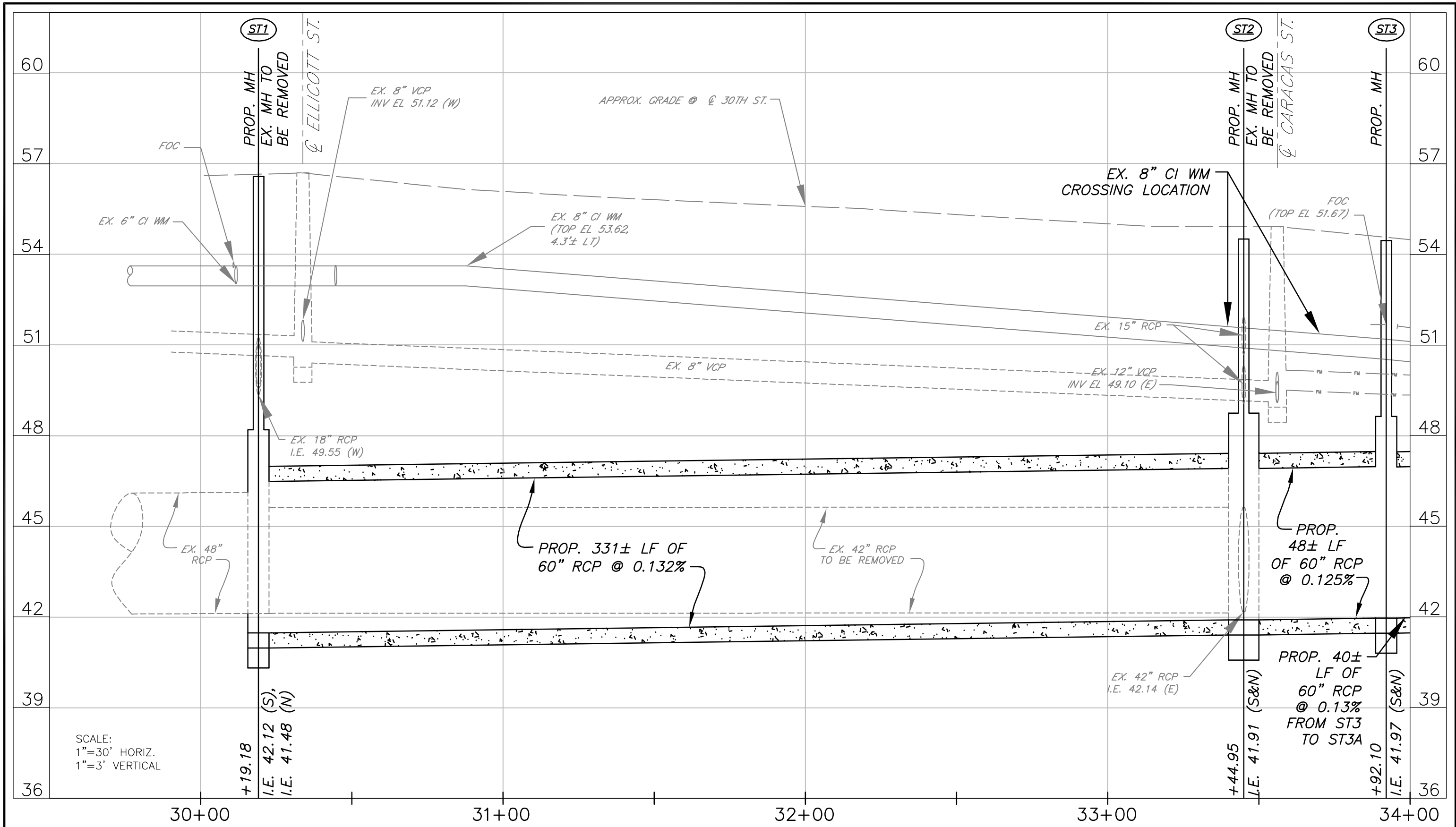
DES: DLD/CJC
 DRN: CRC
 CKD: DLD
 DATE: 5/11

CITY of TAMPA
 Department of Public Works
 Stormwater Division

30TH ST & HILLSBOROUGH AVE DRAINAGE IMPROVEMENTS
 STORMWATER PLAN STA 30+00 TO 34+00

DEREK L. DOUGHTY
 P.E. NO. 54010

WO# 5622
 SHEET
5



No.	DATE	REVISIONS
1	9/26/11	RFI REVISION - PIPE MATERIAL, ST10, WM

STATE OF FLORIDA CERTIFICATE
 AUTHORIZATION NO. 00026527
AppliedSciences
 APPLIED SCIENCES CONSULTING, INC.
 5808 BRECKENRIDGE PARKWAY, SUITE A
 TAMPA, FLORIDA 33610
 PH: (813) 622-6400 ~ FAX: (813) 434-2454

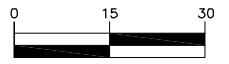
DES: DLD/CJC
 DRN: CRC
 CKD: DLD
 DATE: 5/11

CITY of TAMPA
 Department of Public Works
 Stormwater Division

30TH ST & HILLSBOROUGH AVE DRAINAGE IMPROVEMENTS
 STORMWATER PROFILE STA 30+00 TO 34+00

DEREK L. DOUGHTY
 P.E. NO. 54010

WO# 5622
 SHEET
6



1"=30'
ATLAS F-14
SEC 5, T29S, R19E

REMOVE AND REPLACE EX. PAVEMENT AREA IN LIKE KIND. SEE PAVEMENT REPLACEMENT DETAIL SHEET 20

ST3A
STA 34+31.35, 2.57' LT
PROP. 3.5' DIA. STORM MANHOLE RISER WITH CITY OF TAMPA MANHOLE COVER WITH FDOT TYPE J-7 INLET BOTTOM, FOR 60" PIPE SIZE, SINGLE PIPE CONNECTION PER SIDE PER INDEX #200
TOP EL = 53.90±
PROP. 60" RCP
INV EL (N&S) = 42.01

CONTRACTOR TO BRACE EX. INLET DURING CONSTRUCTION OF 60" DIP BETWEEN ST5 AND ST6. INLET TO BE REPLACED AND RESET IN LIKE KIND IF DAMAGED DURING CONSTRUCTION.

SANITARY SEWER CONFLICT. INSTALL 11± LF OF 16" STEEL CASING PIPE AROUND EX. 8" PVC

PROP. 60" DIP COATED WITH PROTECTO 401 EPOXY LINING WITH A MINIMUM THICKNESS OF 40 MILS (DRY). 60" DIP TO BE RESTRAINED. CENTER LINE OF DIP BELL LOCATED AT APPROX STA 242+18.06, 1.82' LT

30TH CONST. BASELINE
STATION EQN:
36+77.29 = 242+00

STA 242+00: N: 1330162.00 E: 518524.15
STA 36+77.29: N: 1330162.00 E: 518529.18

REMOVE AND REPLACE 11 LF OF EX. 4" VCP LATERAL WITH 4" GREEN SDR35 PVC WITH 8" STEEL CASING. CONNECT EX. VCP TO PROP. PVC VIA FERNCO 1000 SERIES FLEXIBLE COUPLINGS WITH STAINLESS STEEL SHEAR RING OR APPROVED EQUAL. MAINTAIN EX. SLOPE. CORE PROP. STRUCTURES IN FIELD

REMOVE AND REPLACE 79 LF± EX. FENCE IN LIKE KIND

PROP. 60" RCP

6' CLF W/ BARB WIRE TOP

N. 30TH ST.

RELOCATE UTILITY POLE BY OTHERS. COORDINATE WITH TECO.

PROP. 60" ADS N-12 HP

EX. FIRE HYDRANT TO BE PROTECTED IN PLACE AND BRACED DURING CONSTRUCTION. CONTRACTOR TO REPLACE PER CITY STANDARDS IF DAMAGED.

PROP. 65 LF OF 8" DIP WM RELOCATION. RELOCATE WM ABOVE EX. 24" FORCE MAIN. RESTRAIN ALL JOINTS PER COT STANDARDS.

RELOCATE UTILITY POLE BY OTHERS. COORDINATE WITH TECO.

PROP. 18" RCP SEE SHEET 15

PROP. 8" HORIZ. 45° BENDS

BENCHMARK NO. 45
SET NAIL IN DISK
EL = 51.53
N: 1330182.17
E: 518564.87

STA 242+20.26
RT 40.67'

ST4
STA 36+26.46, 3.0' LT
PROP. 3.5' DIA. STORM MANHOLE RISER WITH CITY OF TAMPA MANHOLE COVER WITH FDOT TYPE J-7 INLET BOTTOM, FOR 60" PIPE SIZE, SINGLE PIPE CONNECTION PER SIDE PER INDEX #200
TOP EL = 52.45±
PROP. 60" RCP
INV EL (N&S) = 42.27

ST5
STA 36+74.68, 5.99' RT
PROP. CAST-IN-PLACE 3.5' DIA. STORM MANHOLE RISER WITH CITY OF TAMPA MANHOLE COVER WITH FDOT TYPE J-7 INLET BOTTOM, FOR 60" PIPE SIZE, 2 TO 4 PIPES PER INDEX #200
TOP EL = 51.89±
PROP. 60" RCP
INV EL (S) = 42.34
PROP. 60" DIP
INV EL (NW) = 42.66
PROP. 18" RCP
INV EL (E) = 47.40

ST6
STA 242+26.49, 7.05' LT
PROP. 3.5' DIA. STORM MANHOLE RISER WITH CITY OF TAMPA MANHOLE COVER WITH FDOT TYPE J-7 INLET BOTTOM, FOR 60" PIPE SIZE, 2 TO 4 PIPES PER INDEX #200
TOP EL = 51.93±
PROP. 60" DIP
INV EL (SE) = 42.70
PROP. 60" RCP
INV EL (N) = 42.70

PROP. 18" RCP SEE SHEET 15

ST6A
STA 243+05.00, 7.34' LT
PROP. 3.5' DIA. STORM MANHOLE RISER WITH CITY OF TAMPA MANHOLE COVER WITH FDOT TYPE J-7 INLET BOTTOM, FOR 60" PIPE SIZE, SINGLE PIPE CONNECTION PER SIDE PER INDEX #200
TOP EL = 51.76±
PROP. 60" RCP
INV EL (N&S) = 42.78

ST6B
STA 243+51.00, 7.44' LT
PROP. 3.5' DIA. STORM MANHOLE RISER WITH CITY OF TAMPA MANHOLE COVER WITH FDOT TYPE J-7 INLET BOTTOM, FOR 60" PIPE SIZE, SINGLE PIPE CONNECTION PER SIDE PER INDEX #200
TOP EL = 51.80±
PROP. 60" RCP
INV EL (N&S) = 42.83

NOTE: BASE SURVEY DATA IS FROM THE UCAP (COT WO NO. 5941) AS-BUILT CAD DATA PROVIDED BY THE CITY OF TAMPA DATED APRIL 2011.

MATCHLINE 34+00

MATCHLINE 243+75

No.	DATE	REVISIONS
1	9/26/11	RFI REVISION - PIPE MATERIAL, ST10, WM

STATE OF FLORIDA CERTIFICATE AUTHORIZATION NO. 00026527

APPLIED SCIENCES CONSULTING, INC.
5808 BRECKENRIDGE PARKWAY, SUITE A
TAMPA, FLORIDA 33610
PH: (813) 622-6400 ~ FAX: (813) 434-2454

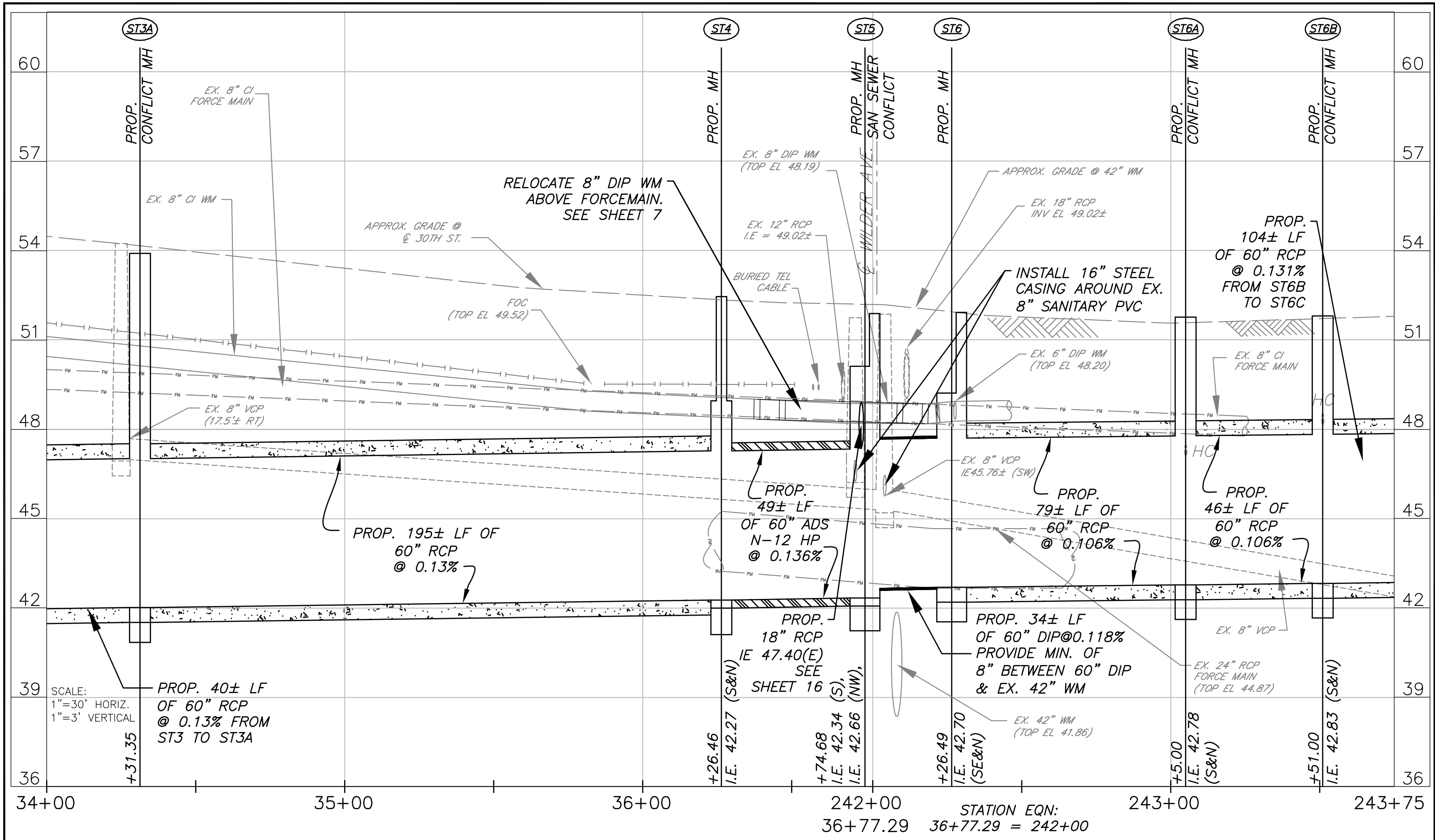
DES: DLD/CJC
DRN: CRC
CKD: DLD
DATE: 5/11

CITY of TAMPA
Department of Public Works
Stormwater Division

30TH ST & HILLSBOROUGH AVE DRAINAGE IMPROVEMENTS
STORMWATER PLAN STA 34+00 TO 243+75

DEREK L. DOUGHTY
P.E. NO. 54010

WO# 5622
SHEET
7



No.	DATE	REVISIONS
1	9/26/11	RFI REVISION - PIPE MATERIAL, ST10, WM

STATE OF FLORIDA CERTIFICATE AUTHORIZATION NO. 00026527

AppliedSciences

APPLIED SCIENCES CONSULTING, INC.
5808 BRECKENRIDGE PARKWAY, SUITE A
TAMPA, FLORIDA 33610
PH: (813) 622-6400 ~ FAX: (813) 434-2454

DES: DLD/CJC
DRN: CRC
CKD: DLD
DATE: 5/11

CITY of TAMPA
Department of Public Works
Stormwater Division

30TH ST & HILLSBOROUGH AVE DRAINAGE IMPROVEMENTS
STORMWATER PROFILE STA 34+00 TO 243+75

DEREK L. DOUGHTY
P.E. NO. 54010

WO# 5622
SHEET
8



0 15 30
1"=30'
ATLAS F-14
SEC 5, T29S, R19E

PROP. 30 LF OF 6" DIP WM RELOCATION. WITH FOUR (4) 22.5° VERT. BENDS. INSTALL AIR RELEASE VALVE AT HIGH POINT PER COT STANDARD. RELOCATE WM ABOVE PROP. 60" STORM PIPE. RESTRAIN ALL JOINTS PER COT STANDARDS.

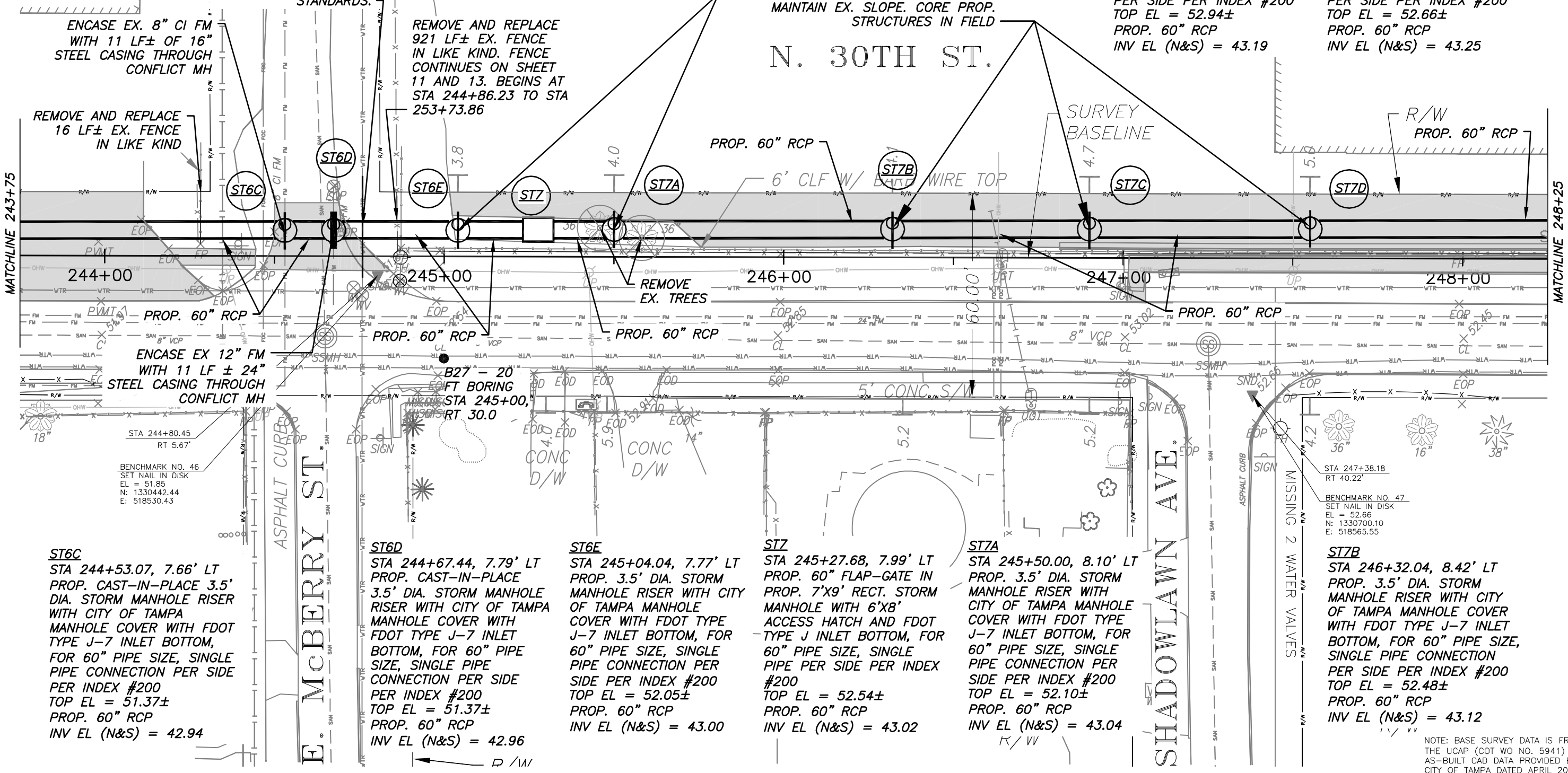
REMOVE AND REPLACE EX. PAVEMENT AREA IN LIKE KIND. SEE PAVEMENT REPLACEMENT DETAIL SHEET 20

REMOVE AND REPLACE 11 LF OF EX. 4" VCP LATERAL WITH 4" GREEN SDR35 PVC WITH 8" STEEL CASING. CONNECT EX. VCP TO PROP. PVC VIA FERNCO 1000 SERIES FLEXIBLE COUPLINGS WITH STAINLESS STEEL SHEAR RING OR APPROVED EQUAL. MAINTAIN EX. SLOPE. CORE PROP. STRUCTURES IN FIELD

ST7C
STA 246+90.04, 8.50' LT
PROP. 3.5' DIA. STORM MANHOLE RISER WITH CITY OF TAMPA MANHOLE COVER WITH FDOT TYPE J-7 INLET BOTTOM, FOR 60" PIPE SIZE, SINGLE PIPE CONNECTION PER SIDE PER INDEX #200
TOP EL = 52.94±
PROP. 60" RCP
INV EL (N&S) = 43.19

ST7D
STA 247+55.04, 8.74' LT
PROP. 3.5' DIA. STORM MANHOLE RISER WITH CITY OF TAMPA MANHOLE COVER WITH FDOT TYPE J-7 INLET BOTTOM, FOR 60" PIPE SIZE, SINGLE PIPE CONNECTION PER SIDE PER INDEX #200
TOP EL = 52.66±
PROP. 60" RCP
INV EL (N&S) = 43.25

N. 30TH ST.



ST6C
STA 244+53.07, 7.66' LT
PROP. CAST-IN-PLACE 3.5' DIA. STORM MANHOLE RISER WITH CITY OF TAMPA MANHOLE COVER WITH FDOT TYPE J-7 INLET BOTTOM, FOR 60" PIPE SIZE, SINGLE PIPE CONNECTION PER SIDE PER INDEX #200
TOP EL = 51.37±
PROP. 60" RCP
INV EL (N&S) = 42.94

ST6D
STA 244+67.44, 7.79' LT
PROP. CAST-IN-PLACE 3.5' DIA. STORM MANHOLE RISER WITH CITY OF TAMPA MANHOLE COVER WITH FDOT TYPE J-7 INLET BOTTOM, FOR 60" PIPE SIZE, SINGLE PIPE CONNECTION PER SIDE PER INDEX #200
TOP EL = 51.37±
PROP. 60" RCP
INV EL (N&S) = 42.96

ST6E
STA 245+04.04, 7.77' LT
PROP. 3.5' DIA. STORM MANHOLE RISER WITH CITY OF TAMPA MANHOLE COVER WITH FDOT TYPE J-7 INLET BOTTOM, FOR 60" PIPE SIZE, SINGLE PIPE CONNECTION PER SIDE PER INDEX #200
TOP EL = 52.05±
PROP. 60" RCP
INV EL (N&S) = 43.00

ST7
STA 245+27.68, 7.99' LT
PROP. 60" FLAP-GATE IN PROP. 7'X9' RECT. STORM MANHOLE WITH 6'X8' ACCESS HATCH AND FDOT TYPE J INLET BOTTOM, FOR 60" PIPE SIZE, SINGLE PIPE PER SIDE PER INDEX #200
TOP EL = 52.54±
PROP. 60" RCP
INV EL (N&S) = 43.02

ST7A
STA 245+50.00, 8.10' LT
PROP. 3.5' DIA. STORM MANHOLE RISER WITH CITY OF TAMPA MANHOLE COVER WITH FDOT TYPE J-7 INLET BOTTOM, FOR 60" PIPE SIZE, SINGLE PIPE CONNECTION PER SIDE PER INDEX #200
TOP EL = 52.10±
PROP. 60" RCP
INV EL (N&S) = 43.04

ST7B
STA 246+32.04, 8.42' LT
PROP. 3.5' DIA. STORM MANHOLE RISER WITH CITY OF TAMPA MANHOLE COVER WITH FDOT TYPE J-7 INLET BOTTOM, FOR 60" PIPE SIZE, SINGLE PIPE CONNECTION PER SIDE PER INDEX #200
TOP EL = 52.48±
PROP. 60" RCP
INV EL (N&S) = 43.12

NOTE: BASE SURVEY DATA IS FROM THE UCAP (COT WO NO. 5941) AS-BUILT CAD DATA PROVIDED BY THE CITY OF TAMPA DATED APRIL 2011.

No.	DATE	REVISIONS
1	9/26/11	RFI REVISION - PIPE MATERIAL, ST10, WM

STATE OF FLORIDA CERTIFICATE AUTHORIZATION NO. 00026527
AppliedSciences
APPLIED SCIENCES CONSULTING, INC.
5808 BRECKENRIDGE PARKWAY, SUITE A
TAMPA, FLORIDA 33610
PH: (813) 622-6400 - FAX: (813) 434-2454

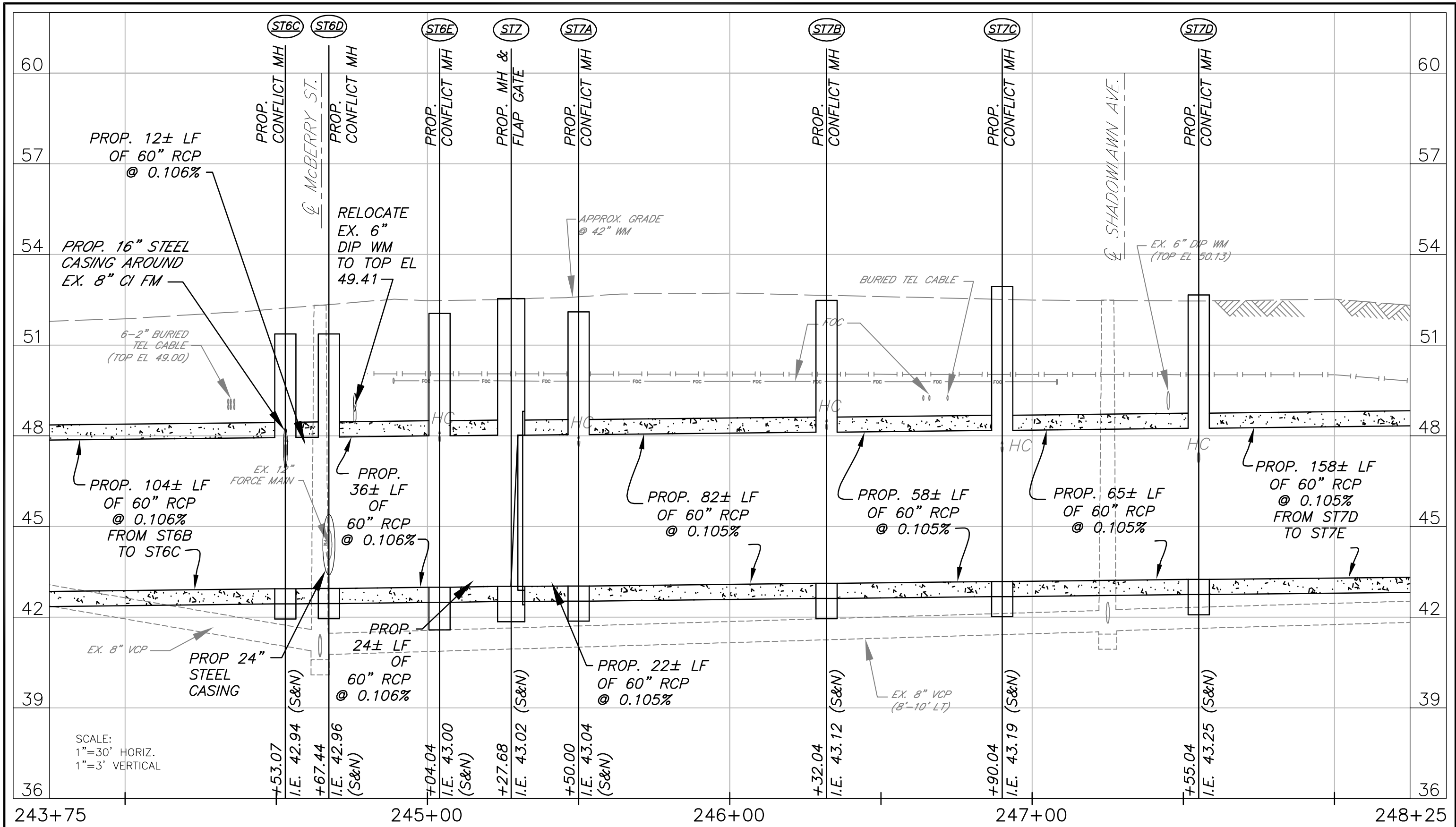
DES: DLD/CJC
DRN: CRC
CKD: DLD
DATE: 5/11

CITY of TAMPA
Department of Public Works
Stormwater Division

30TH ST & HILLSBOROUGH AVE DRAINAGE IMPROVEMENTS
STORMWATER PLAN STA 243+75 TO 248+25

DEREK L. DOUGHTY
P.E. NO. 54010

WO# 5622
SHEET
9



No.	DATE	REVISIONS
1	9/26/11	RFI REVISION - PIPE MATERIAL, ST10, WM

STATE OF FLORIDA CERTIFICATE
 AUTHORIZATION NO. 00026527
AppliedSciences
 APPLIED SCIENCES CONSULTING, INC.
 5808 BRECKENRIDGE PARKWAY, SUITE A
 TAMPA, FLORIDA 33610
 PH: (813) 622-6400 ~ FAX: (813) 434-2454

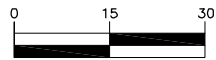
DES: DLD/CJC
 DRN: CRC
 CKD: DLD
 DATE: 5/11

CITY of TAMPA
 Department of Public Works
 Stormwater Division

30TH ST & HILLSBOROUGH AVE DRAINAGE IMPROVEMENTS
 STORMWATER PROFILE STA 243+75 TO 248+25

DEREK L. DOUGHTY
 P.E. NO. 54010

WO# 5622
 SHEET
10



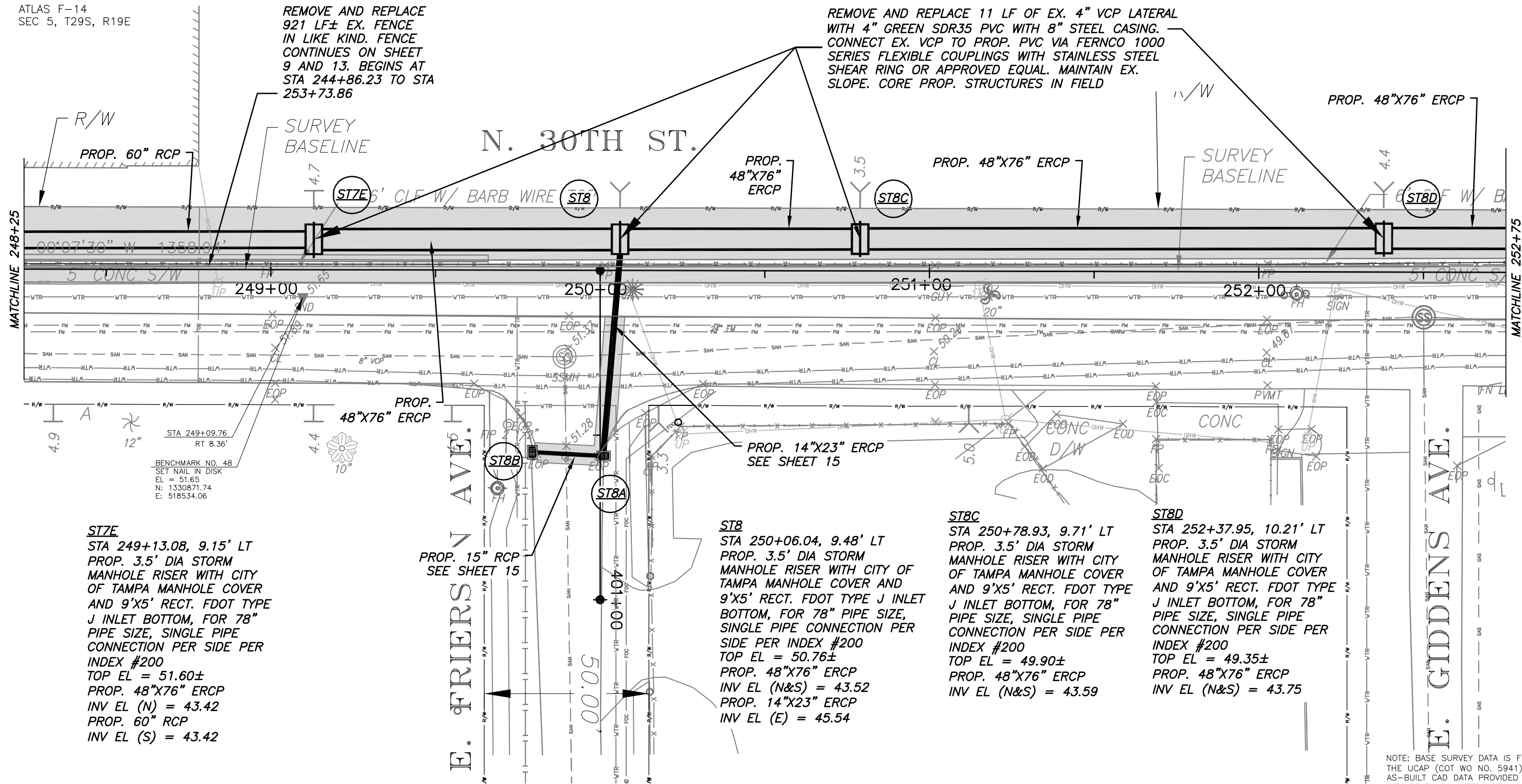
1"=30'
ATLAS F-14
SEC 5, T29S, R19E

REMOVE AND REPLACE EX. PAVEMENT AREA IN LIKE KIND. SEE PAVEMENT REPLACEMENT DETAIL SHEET 20

FRIERSON AVE CONST. BASELINE
STATION EQN:
250+00 = 400+00

REMOVE AND REPLACE 921 LF± EX. FENCE IN LIKE KIND. FENCE CONTINUES ON SHEET 9 AND 13. BEGINS AT STA 244+86.23 TO STA 253+73.86

REMOVE AND REPLACE 11 LF OF EX. 4" VCP LATERAL WITH 4" GREEN SDR35 PVC WITH 8" STEEL CASING. CONNECT EX. VCP TO PROP. PVC VIA FERNCO 1000 SERIES FLEXIBLE COUPLINGS WITH STAINLESS STEEL SHEAR RING OR APPROVED EQUAL. MAINTAIN EX. SLOPE. CORE PROP. STRUCTURES IN FIELD



ST7E
STA 249+13.08, 9.15' LT
PROP. 3.5' DIA STORM MANHOLE RISER WITH CITY OF TAMPA MANHOLE COVER AND 9'X5' RECT. FDOT TYPE J INLET BOTTOM, FOR 78" PIPE SIZE, SINGLE PIPE CONNECTION PER SIDE PER INDEX #200
TOP EL = 51.60±
PROP. 48"X76" ERCP
INV EL (N) = 43.42
PROP. 60" RCP
INV EL (S) = 43.42

PROP. 15" RCP
SEE SHEET 15

ST8
STA 250+06.04, 9.48' LT
PROP. 3.5' DIA STORM MANHOLE RISER WITH CITY OF TAMPA MANHOLE COVER AND 9'X5' RECT. FDOT TYPE J INLET BOTTOM, FOR 78" PIPE SIZE, SINGLE PIPE CONNECTION PER SIDE PER INDEX #200
TOP EL = 50.76±
PROP. 48"X76" ERCP
INV EL (N&S) = 43.52
PROP. 14"X23" ERCP
INV EL (E) = 45.54

ST8C
STA 250+78.93, 9.71' LT
PROP. 3.5' DIA STORM MANHOLE RISER WITH CITY OF TAMPA MANHOLE COVER AND 9'X5' RECT. FDOT TYPE J INLET BOTTOM, FOR 78" PIPE SIZE, SINGLE PIPE CONNECTION PER SIDE PER INDEX #200
TOP EL = 49.90±
PROP. 48"X76" ERCP
INV EL (N&S) = 43.59

ST8D
STA 252+37.95, 10.21' LT
PROP. 3.5' DIA STORM MANHOLE RISER WITH CITY OF TAMPA MANHOLE COVER AND 9'X5' RECT. FDOT TYPE J INLET BOTTOM, FOR 78" PIPE SIZE, SINGLE PIPE CONNECTION PER SIDE PER INDEX #200
TOP EL = 49.35±
PROP. 48"X76" ERCP
INV EL (N&S) = 43.75

NOTE: BASE SURVEY DATA IS FROM THE UCAP (COT WO NO. 5941) AS-BUILT CAD DATA PROVIDED BY THE CITY OF TAMPA DATED APRIL 2011.

No.	DATE	REVISIONS
1	9/26/11	RFI REVISION - PIPE MATERIAL, ST10, WM

STATE OF FLORIDA CERTIFICATE AUTHORIZATION NO. 00026527
AppliedSciences
 APPLIED SCIENCES CONSULTING, INC.
 5808 BRECKENRIDGE PARKWAY, SUITE A
 TAMPA, FLORIDA 33610
 PH: (813) 622-6400 ~ FAX: (813) 434-2454

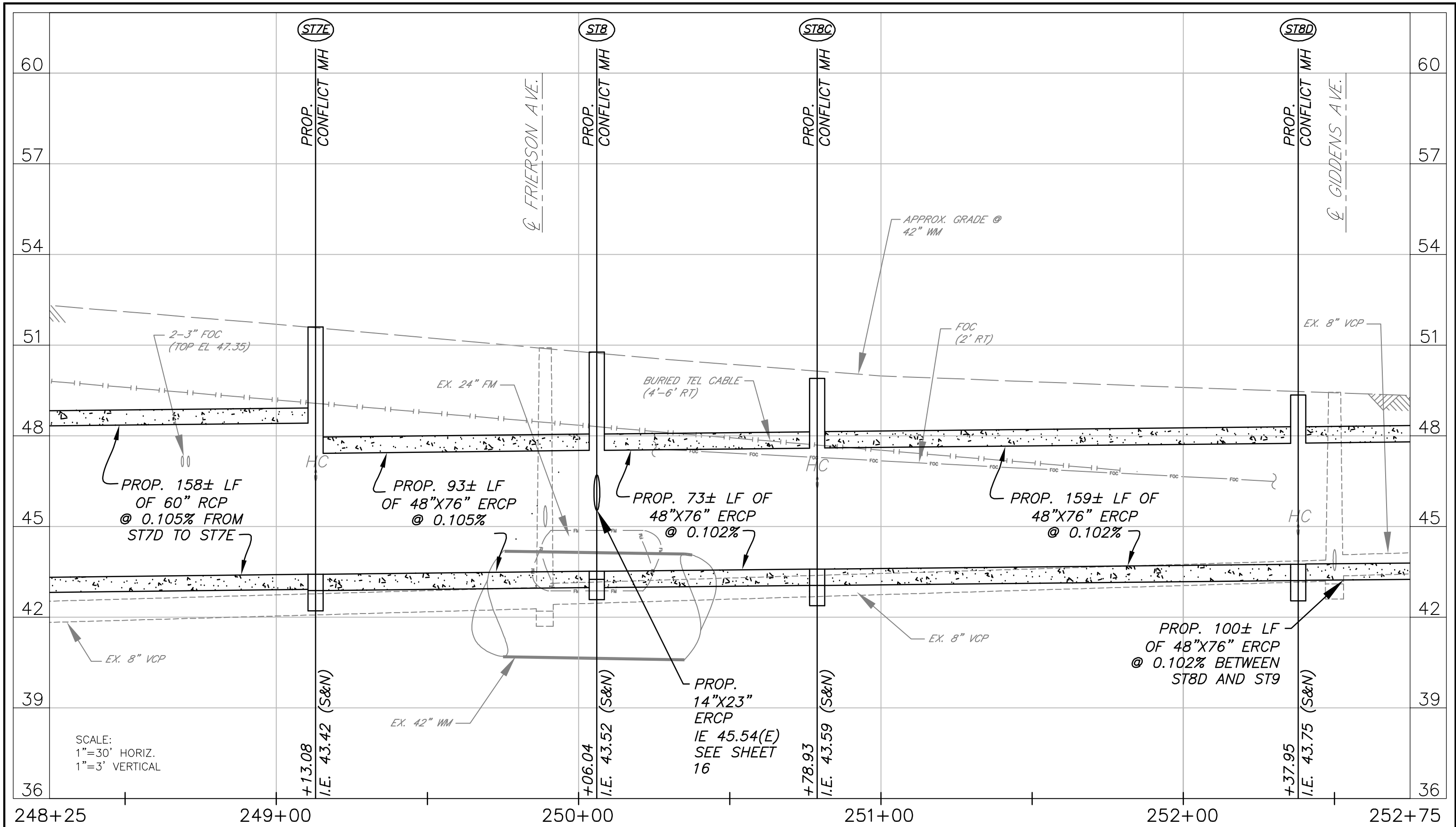
DES: DLD/CJC
DRN: CRC
CKD: DLD
DATE: 5/11

CITY of TAMPA
Department of Public Works
Stormwater Division

30TH ST & HILLSBOROUGH AVE DRAINAGE IMPROVEMENTS
STORMWATER PLAN STA 248+25 TO 252+75

DEREK L. DOUGHTY
P.E. NO. 54010

WO# 5622
SHEET
11



No.	DATE	REVISIONS
1	9/26/11	RFI REVISION - PIPE MATERIAL, ST10, WM

STATE OF FLORIDA CERTIFICATE
 AUTHORIZATION NO. 00026527
AppliedSciences
 APPLIED SCIENCES CONSULTING, INC.
 5808 BRECKENRIDGE PARKWAY, SUITE A
 TAMPA, FLORIDA 33610
 PH: (813) 622-6400 ~ FAX: (813) 434-2454

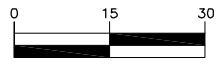
DES: DLD/CJC
 DRN: CRC
 CKD: DLD
 DATE: 5/11

CITY of TAMPA
 Department of Public Works
 Stormwater Division

30TH ST & HILLSBOROUGH AVE DRAINAGE IMPROVEMENTS
 STORMWATER PROFILE STA 248+25 TO 252+75

DEREK L. DOUGHTY
 P.E. NO. 54010

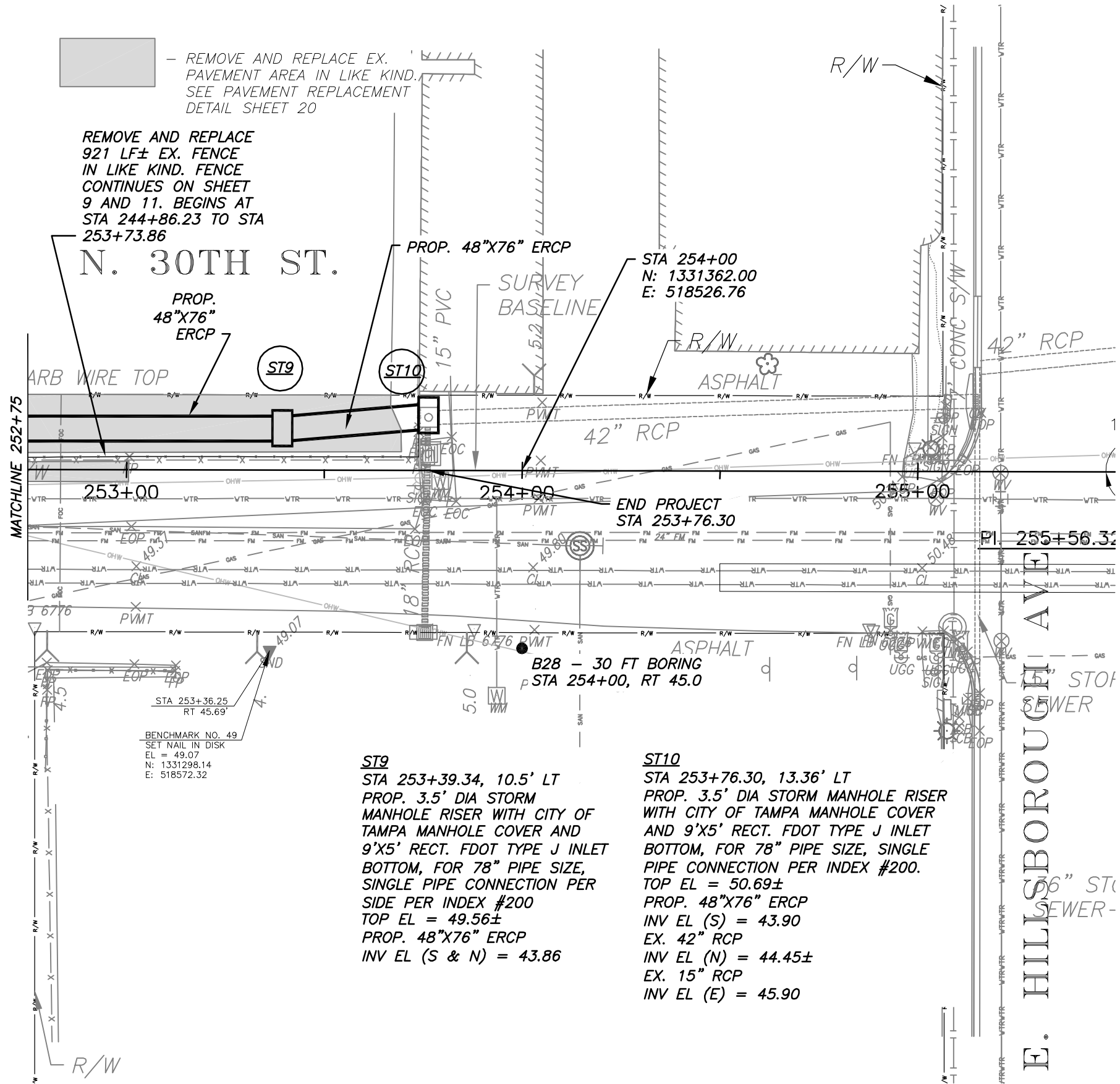
WO# 5622
 SHEET
12



1"=30'
ATLAS F-14
SEC 5, T29S, R19E

REMOVE AND REPLACE EX. PAVEMENT AREA IN LIKE KIND. SEE PAVEMENT REPLACEMENT DETAIL SHEET 20

REMOVE AND REPLACE 921 LF± EX. FENCE IN LIKE KIND. FENCE CONTINUES ON SHEET 9 AND 11. BEGINS AT STA 244+86.23 TO STA 253+73.86



BENCHMARK NO. 49
SET NAIL IN DISK
EL = 49.07
N: 1331298.14
E: 518572.32

ST9
STA 253+39.34, 10.5' LT
PROP. 3.5' DIA STORM MANHOLE RISER WITH CITY OF TAMPA MANHOLE COVER AND 9'X5' RECT. FDOT TYPE J INLET BOTTOM, FOR 78" PIPE SIZE, SINGLE PIPE CONNECTION PER SIDE PER INDEX #200
TOP EL = 49.56±
PROP. 48"X76" ERCP
INV EL (S & N) = 43.86

ST10
STA 253+76.30, 13.36' LT
PROP. 3.5' DIA STORM MANHOLE RISER WITH CITY OF TAMPA MANHOLE COVER AND 9'X5' RECT. FDOT TYPE J INLET BOTTOM, FOR 78" PIPE SIZE, SINGLE PIPE CONNECTION PER INDEX #200.
TOP EL = 50.69±
PROP. 48"X76" ERCP
INV EL (S) = 43.90
EX. 42" RCP
INV EL (N) = 44.45±
EX. 15" RCP
INV EL (E) = 45.90

NOTE: BASE SURVEY DATA IS FROM THE UCAP (COT WO NO. 5941) AS-BUILT CAD DATA PROVIDED BY THE CITY OF TAMPA DATED APRIL 2011.

No.	DATE	REVISIONS
1	9/26/11	RFI REVISION - PIPE MATERIAL, ST10, WM

STATE OF FLORIDA CERTIFICATE AUTHORIZATION NO. 00026527
AppliedSciences
APPLIED SCIENCES CONSULTING, INC.
5808 BRECKENRIDGE PARKWAY, SUITE A
TAMPA, FLORIDA 33610
PH: (813) 622-6400 ~ FAX: (813) 434-2454

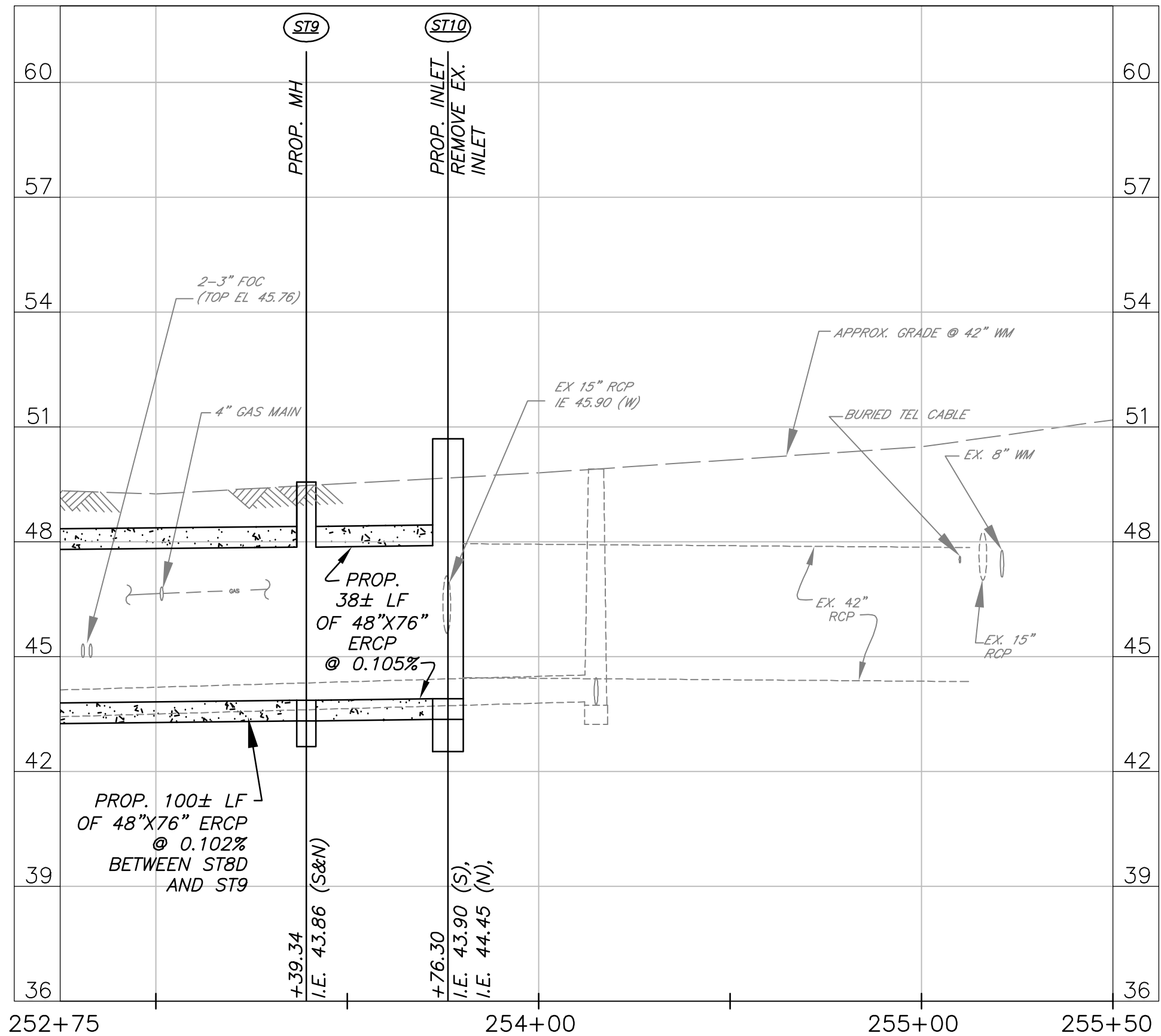
DES: DLD/CJC
DRN: CRC
CKD: DLD
DATE: 5/11

CITY of TAMPA
Department of Public Works
Stormwater Division

30TH ST & HILLSBOROUGH AVE DRAINAGE IMPROVEMENTS
STORMWATER PLAN STA 252+00 TO 255+50

DEREK L. DOUGHTY
P.E. NO. 54010

WO# 5622
SHEET
13



SCALE:
 1"=30' HORIZ.
 1"=3' VERTICAL

No.	DATE	REVISIONS
1	9/26/11	RFI REVISION - PIPE MATERIAL, ST10, WM

STATE OF FLORIDA CERTIFICATE
 AUTHORIZATION NO. 00026527
AppliedSciences
 APPLIED SCIENCES CONSULTING, INC.
 5808 BRECKENRIDGE PARKWAY, SUITE A
 TAMPA, FLORIDA 33610
 PH: (813) 622-6400 ~ FAX: (813) 434-2454

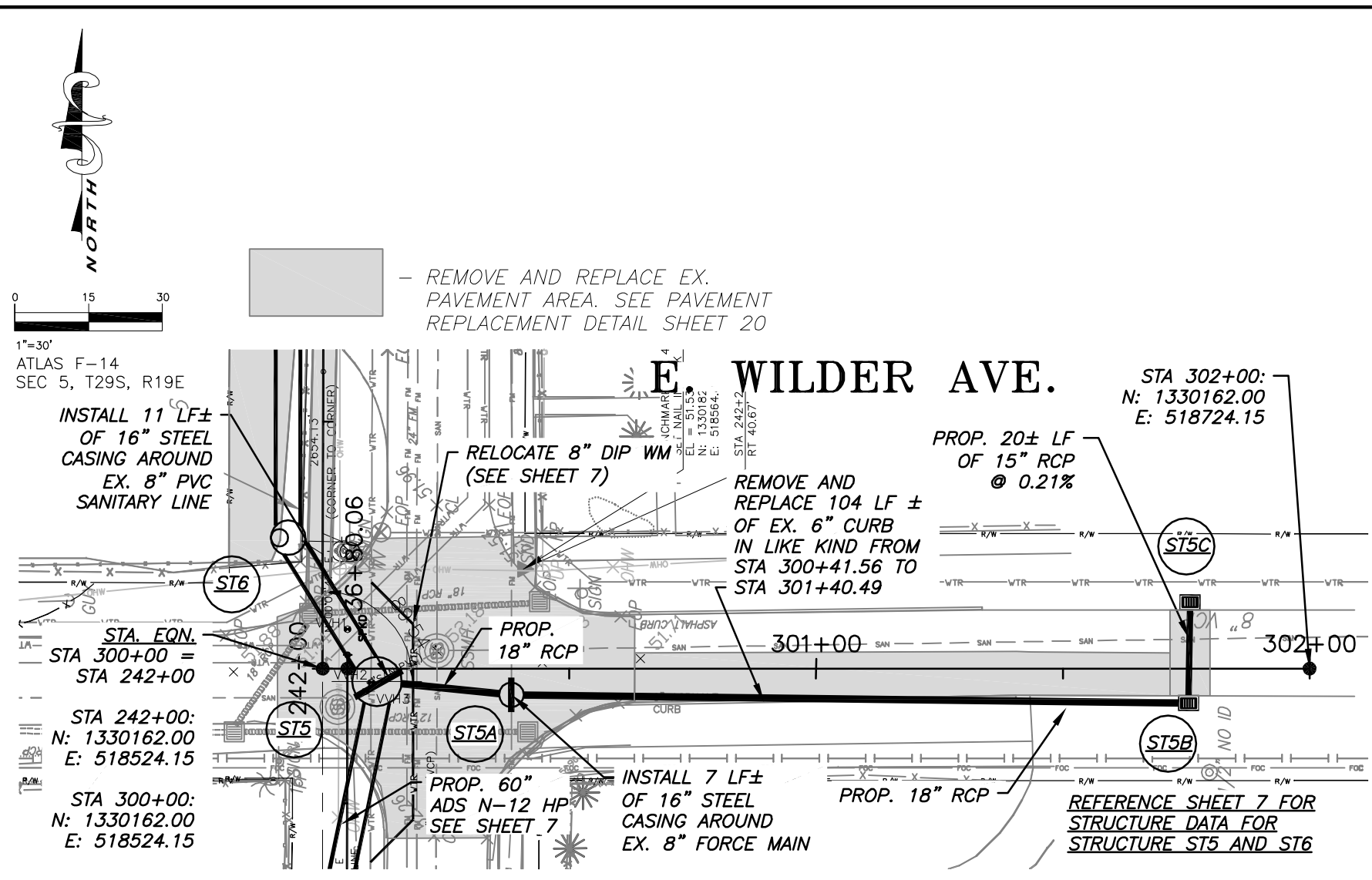
DES: DLD/CJC
 DRN: CRC
 CKD: DLD
 DATE: 5/11

CITY of TAMPA
 Department of Public Works
 Stormwater Division

30TH ST & HILLSBOROUGH AVE DRAINAGE IMPROVEMENTS
 STORMWATER PROFILE STA 252+75 TO 255+50

DEREK L. DOUGHTY
 P.E. NO. 54010

WO# 5622
 SHEET
 14



— REMOVE AND REPLACE EX. PAVEMENT AREA. SEE PAVEMENT REPLACEMENT DETAIL SHEET 20

E. WILDER AVE.

INSTALL 11 LF± OF 16" STEEL CASING AROUND EX. 8" PVC SANITARY LINE

RELOCATE 8" DIP WM (SEE SHEET 7)

REMOVE AND REPLACE 104 LF ± OF EX. 6" CURB IN LIKE KIND FROM STA 300+41.56 TO STA 301+40.49

PROP. 20± LF OF 15" RCP @ 0.21%

PROP. 18" RCP

PROP. 60" ADS N-12 HP SEE SHEET 7

INSTALL 7 LF± OF 16" STEEL CASING AROUND EX. 8" FORCE MAIN

PROP. 18" RCP

REFERENCE SHEET 7 FOR STRUCTURE DATA FOR STRUCTURE ST5 AND ST6

STA 302+00:
N: 1330162.00
E: 518724.15

STA 242+00:
N: 1330162.00
E: 518524.15

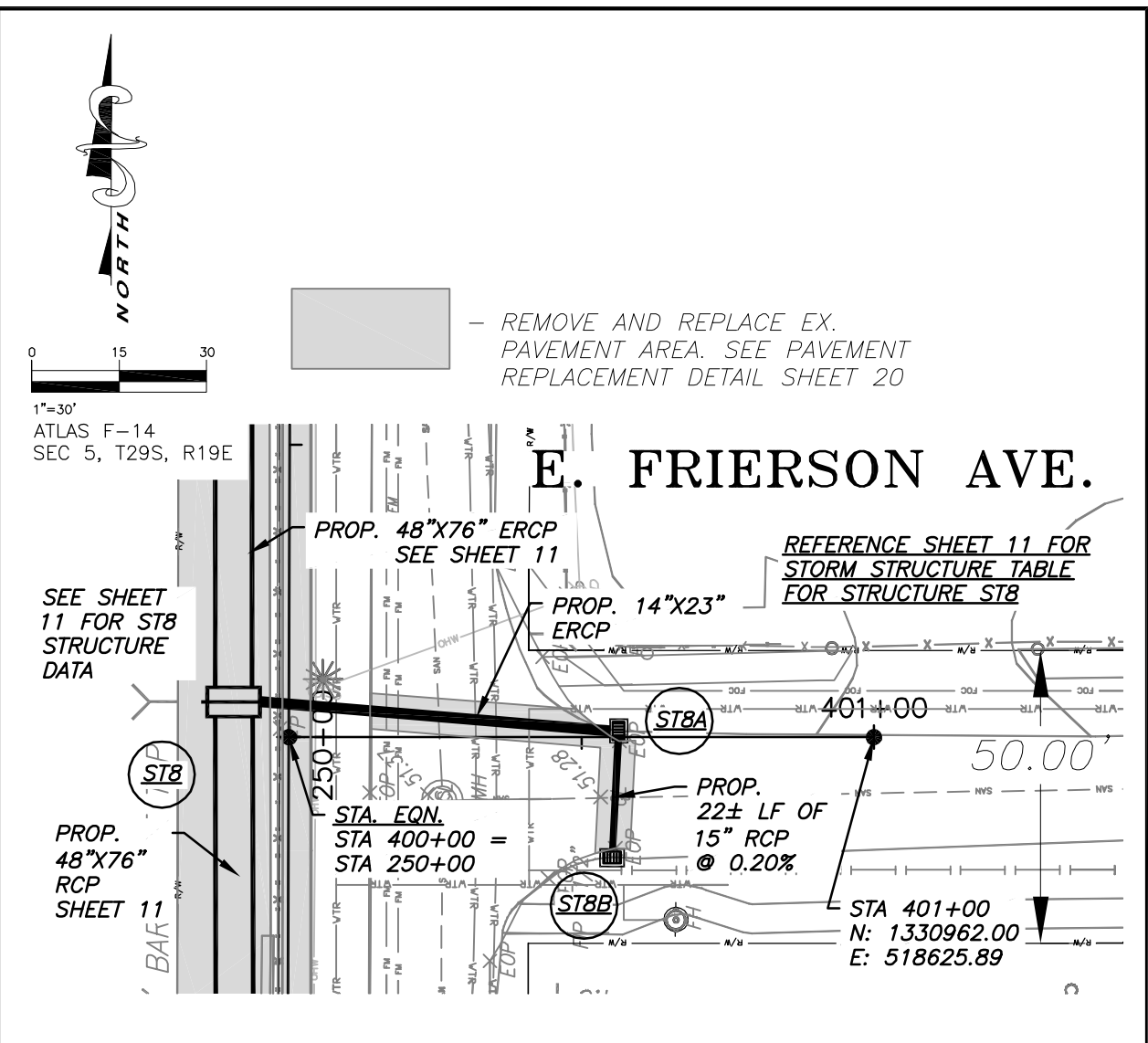
STA 300+00:
N: 1330162.00
E: 518524.15

ST5A
STA 300+38.26, 5.29' RT
PROP. CAST-IN-PLACE STORMWATER MANHOLE WITH CITY OF TAMPA MANHOLE COVER AND FDOT TYPE J-5 ROUND BOTTOM, PER INDEX #200
TOP EL = 51.67±
PROP. 18" RCP
INV EL (E&W) = 47.46

ST5B
STA 301+75.75, 4.95' RT
PROP. CITY OF TAMPA TYPE E INLET
TOP EL = 51.32±
PROP. 18" RCP
INV EL (W) = 48.28
PROP. 15" RCP
INV EL (N) = 48.28

ST5C
STA 301+75.75, 14.53' LT
PROP. CITY OF TAMPA TYPE E INLET
TOP EL = 51.32±
PROP. 15" RCP
INV EL (S) = 48.32

NOTE: BASE SURVEY DATA IS FROM THE UCAP (COT WO NO. 5941) AS-BUILT CAD DATA PROVIDED BY THE CITY OF TAMPA DATED APRIL 2011.



— REMOVE AND REPLACE EX. PAVEMENT AREA. SEE PAVEMENT REPLACEMENT DETAIL SHEET 20

E. FRIERSON AVE.

PROP. 48"X76" ERCP SEE SHEET 11

PROP. 14"X23" ERCP

PROP. 22± LF OF 15" RCP @ 0.20%

PROP. 48"X76" RCP SEE SHEET 11

PROP. 15" RCP

PROP. 15" RCP

REFERENCE SHEET 11 FOR STORM STRUCTURE TABLE FOR STRUCTURE ST8

SEE SHEET 11 FOR ST8 STRUCTURE DATA

REFERENCE SHEET 7 FOR STRUCTURE DATA FOR STRUCTURE ST5 AND ST6

STA 401+00:
N: 1330962.00
E: 518625.89

STA 250+00:
N: 1330962.00
E: 518525.89

STA 400+00:
N: 1330962.00
E: 518525.89

ST8A
STA 400+56.35, 1.06' LT
PROP. CITY OF TAMPA TYPE E INLET
TOP EL = 50.96±
PROP. 14"X23" ERCP
INV EL (W) = 45.69
PROP. 15" RCP
INV EL (S) = 46.96

ST8B
STA 400+55.22, 20.58' RT
PROP. CITY OF TAMPA TYPE E INLET
TOP EL = 51.22±
PROP. 15" RCP
INV EL (N) = 47.0

NOTE: BASE SURVEY DATA IS FROM THE UCAP (COT WO NO. 5941) AS-BUILT CAD DATA PROVIDED BY THE CITY OF TAMPA DATED APRIL 2011.

No.	DATE	REVISIONS
1	9/26/11	RFI REVISION - PIPE MATERIAL, ST10, WM

STATE OF FLORIDA CERTIFICATE AUTHORIZATION NO. 00026527

AppliedSciences

APPLIED SCIENCES CONSULTING, INC.
5808 BRECKENRIDGE PARKWAY, SUITE A
TAMPA, FLORIDA 33610
PH: (813) 622-6400 ~ FAX: (813) 434-2454

DES: DLD/CJC
DRN: CRC
CKD: DLD
DATE: 5/11

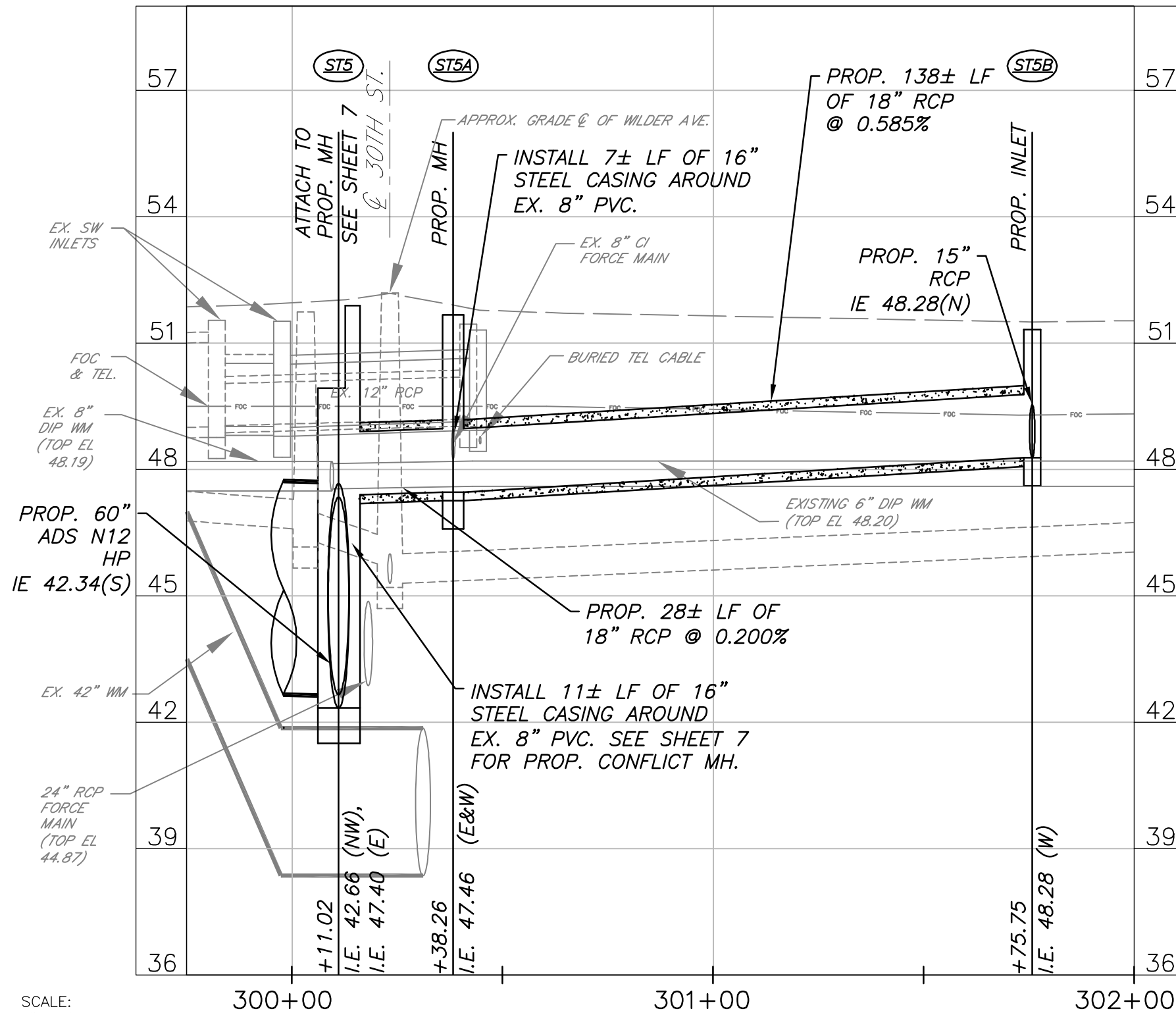
CITY of TAMPA
Department of Public Works
Stormwater Division

30TH ST & HILLSBOROUGH AVE DRAINAGE IMPROVEMENTS
SW PLAN
E. WILDER AVE AND E. FRIERSON AVE.

DEREK L. DOUGHTY
P.E. NO. 54010

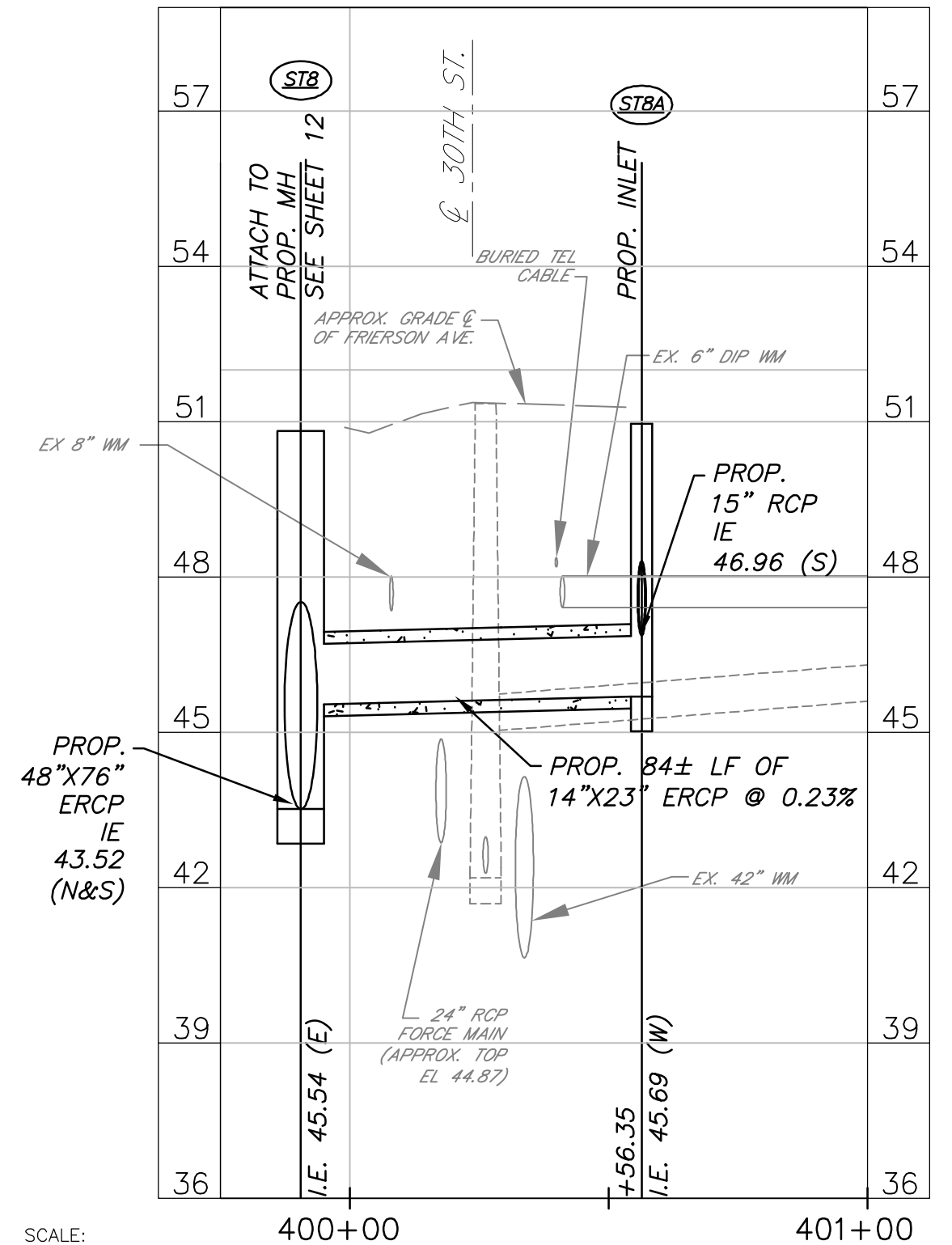
WO# 5622
SHEET
15

E. WILDER AVE.
STA. 300+00 TO 302+00



SCALE:
1"=30' HORIZ.
1"=3' VERTICAL

E. FRIERSON AVE.
STA. 400+00 TO 401+00



SCALE:
1"=30' HORIZ.
1"=3' VERTICAL

No.	DATE	REVISIONS
1	9/26/11	RFI REVISION - PIPE MATERIAL, ST10, WM

STATE OF FLORIDA CERTIFICATE
AUTHORIZATION NO. 00026627
AppliedSciences
APPLIED SCIENCES CONSULTING, INC.
5808 BRECKENRIDGE PARKWAY, SUITE A
TAMPA, FLORIDA 33610
PH: (813) 622-6400 ~ FAX: (813) 434-2454

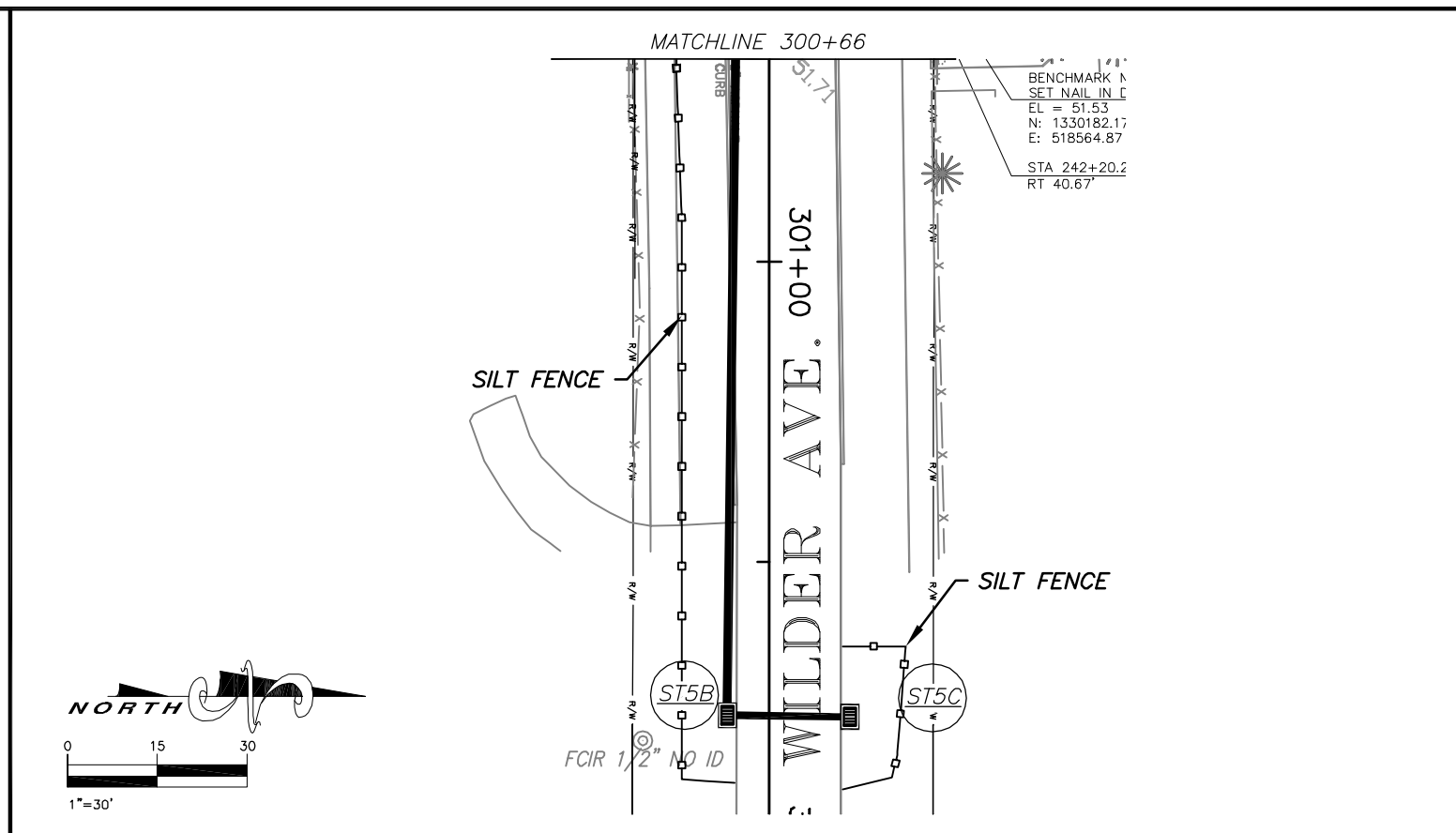
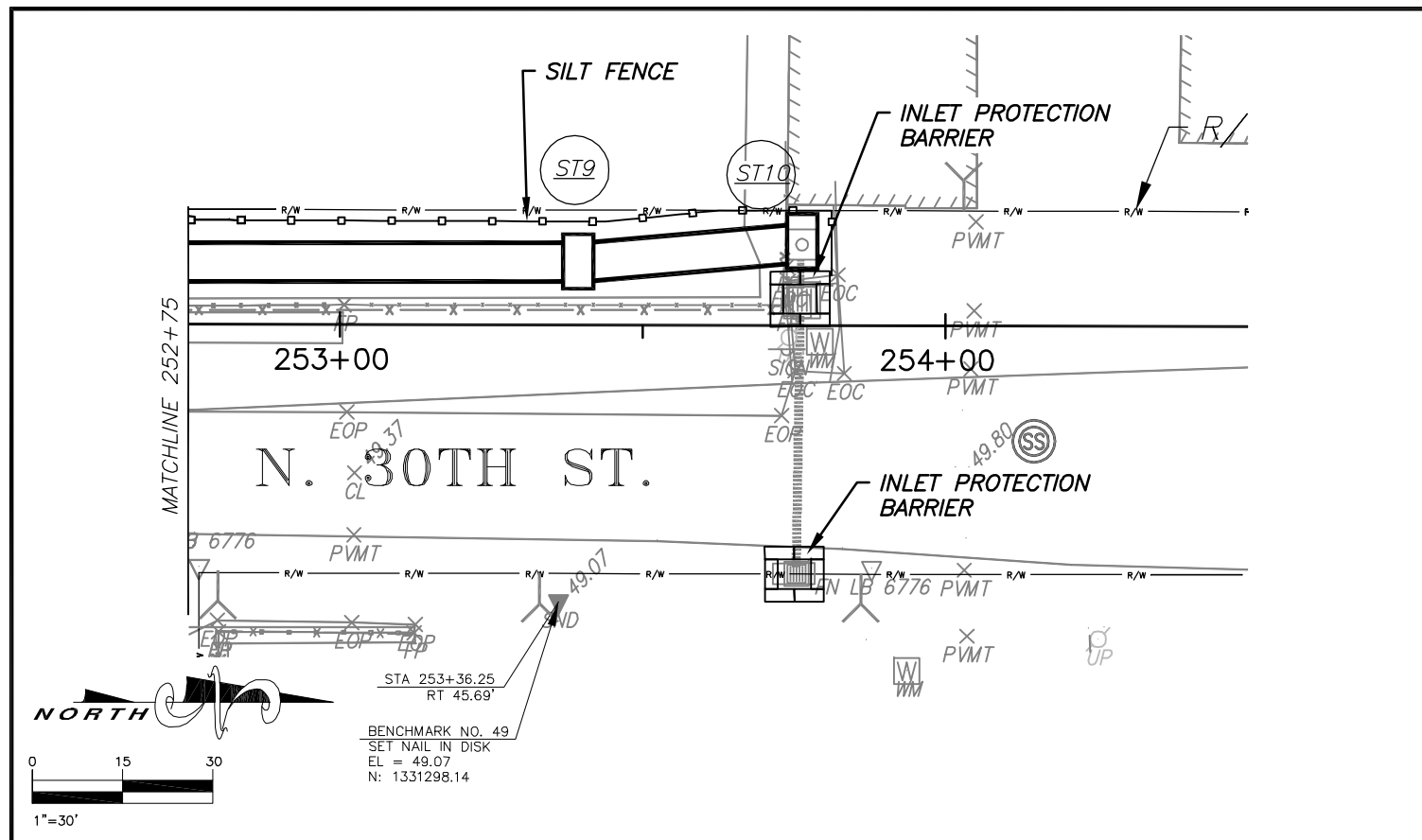
DES: DLD/CJC
DRN: CRC
CKD: DLD
DATE: 5/11

CITY of TAMPA
Department of Public Works
Stormwater Division

30TH ST & HILLSBOROUGH AVE DRAINAGE IMPROVEMENTS
SW PROFILE
E. WILDER AVE AND E. FRIERSON AVE.

DEREK L. DOUGHTY
P.E. NO. 54010

WO# 5622
SHEET
16



No.	DATE	REVISIONS
1	9/26/11	RFI REVISION - PIPE MATERIAL, ST10, WM

STATE OF FLORIDA CERTIFICATE
AUTHORIZATION NO. 00026527
AppliedSciences
APPLIED SCIENCES CONSULTING, INC.
5808 BRECKENRIDGE PARKWAY, SUITE A
TAMPA, FLORIDA 33610
PH: (813) 622-6400 ~ FAX: (813) 434-2454

DES: DLD/CJC
DRN: CRC
CKD: DLD
DATE: 5/11

CITY of TAMPA
Department of Public Works
Stormwater Division

30TH ST & HILLSBOROUGH AVE DRAINAGE IMPROVEMENTS
CSWMP

DEREK L. DOUGHTY
P.E. NO. 54010

WO# 5622
SHEET
25