

The Enclosed Document Is Provided For Your Convenience.

Contact for ALL Questions:

[MailTo:ContractAdministration@TampaGov.net](mailto:ContractAdministration@TampaGov.net)

Visit the City of Tampa Construction Project Bidding Page At:

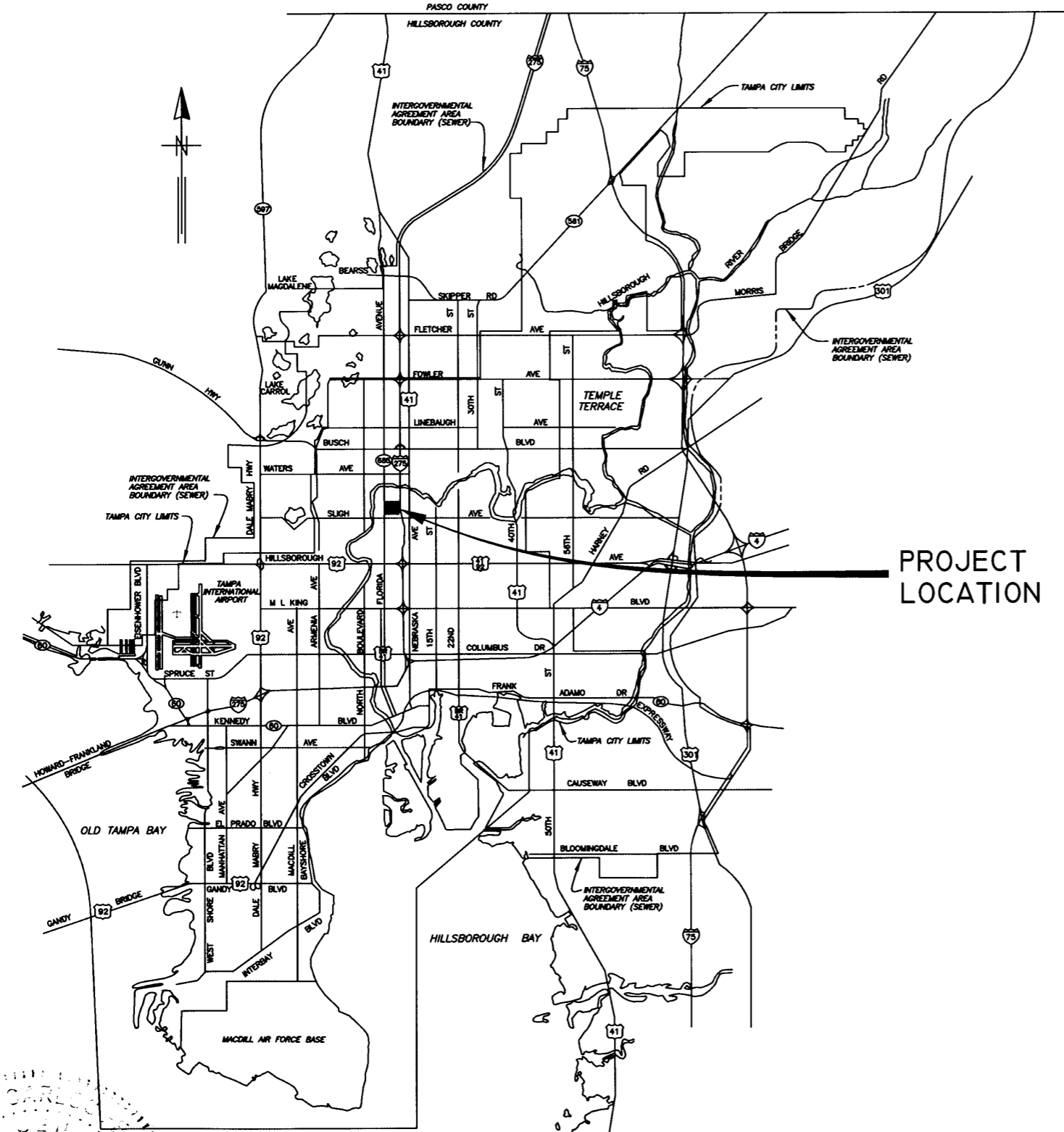
http://www.tampagov.net/dept_contract_administration/programs_and_services/construction_project_bidding/index.asp

To be listed as a Plan Holder on that page, email the above address.

City of Tampa
Contract Administration Department
306 E. Jackson St. #280A4N
Tampa, FL 33602
(813)274-8456, fax 274-8080

B071-125

LOCATION MAP



CITY of TAMPA



PROJECT LOCATION

WASTEWATER DEPARTMENT

PLANS FOR

FLORA ST. WASTEWATER GRAVITY SYSTEM REPAIRS
FLORIDA AVENUE TO CENTRAL AVENUE

CONTRACT No. II-C-00065

User: SS2D Drawing Name: C:\DWG\PIPE\Flora st Florida To Central.dwg
Layout: Nov 03, 2011 - 3:17pm CTB - MONO.CTB

Professional Engineer Seal for JACINTO CARLOS FERRAS, R.E. #49454, Design Division Head, WASTEWATER DEPARTMENT.

No.	DATE	REVISIONS
3		
2		
1		

DES: D.R.
DRN: W.A.
CKD: SF
DATE: 11/16/11

CITY of TAMPA
WASTEWATER DEPARTMENT

COVER SHEET

W.O. 5587
SHEET
1
OF 13

B071-126

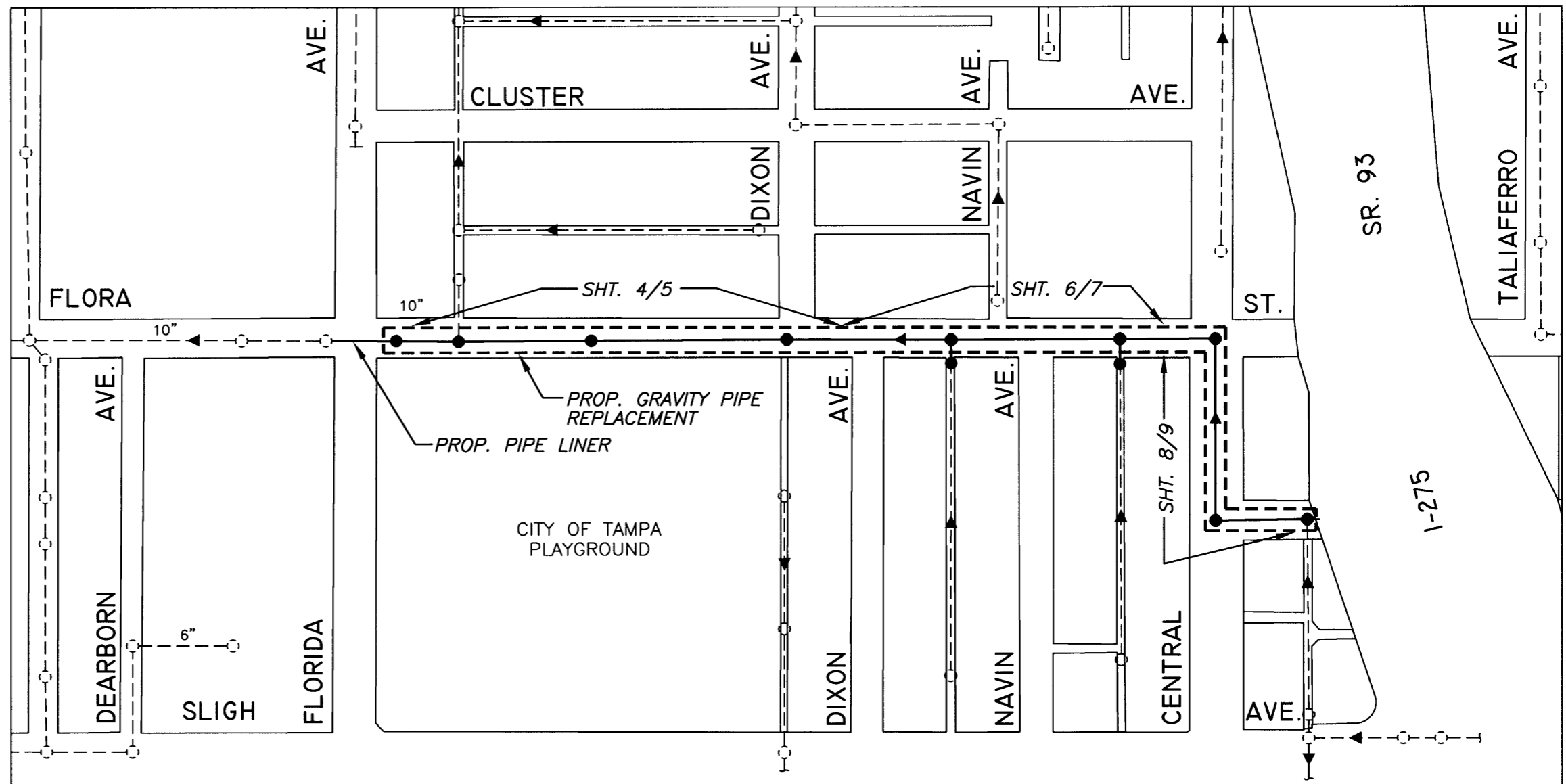
LEGEND

ABBREVIATIONS

EX SEWERS	UP to 36" & SMALLER	36" & LARGER
EX FORCE MAIN		
EX SAN SEWER & MANHOLES		
EX STORM SEWER & MANHOLES		
PROP SEWERS		
PROP FORCE MAIN		
PROP SANITARY SEWER & MANHOLES		
PROP STORM SEWER & MANHOLES		
OTHER FEATURES		
RIGHT of WAY LINE		
EDGE of PAVEMENT		
WATER LINE		
GAS LINE		
ELECTRICAL CABLE or DUCT		
TELEPHONE CABLE or DUCT		
TV CABLE		
VALVE, AIR RELEASE VALVE		
HYDRANT		
CATCH BASIN, GRATE		
POWER POLE		
TELEPHONE POLE		
GUY POLE		
GUY WIRE		
VALVE VAULT		
WATER METER		
ELECTRICAL MANHOLE or VAULT		
TELEPHONE MANHOLE or VAULT		
TRAFFIC BOX or VAULT		
BUILDING LIMIT		
PROPERTY OWNERSHIP		
FENCE		
CONIFER		
PALM		
OAK		
OTHER		
SHRUB		
HEDGE		
RAILROAD TRACKS		
IRON PIPE		
CONTROL POINT		
CONCRETE MONUMENT		
OPEN DITCHES		
EXISTING WYE		
PROPOSED WYE		
CLEAN OUT		

AIR RELEASE VALVE	ARV	MAINTENANCE OF TRAFFIC	MOT
APPROXIMATE LOCATION	AL	MANHOLE	MH or MH
BENCH MARK	BM	PLUG VALVE	PV
BURIED TELEPHONE	BT	POINT of INTERSECTION	PI
CONCRETE PIPE	CP	POLYVINYL CHLORIDE PIPE	PVCP
DIAMETER RATIO	DR	REINFORCED CONCRETE PIPE	RCP
DUCTILE IRON PIPE	DIP	RESTRAINED MECHANICAL JOINT	RMJ
EDGE OF PAVEMENT	EOP	RIGHT of WAY	R/W
FIBER OPTIC CABLE	FOC	TOP of PIPE	TOP
FLORIDA DEPT. OF TRANSPORTATION	FDOT	VERIFIED VERT. AND HORZ. LOCATION	Vvh
FORCE MAIN	FM	VITRIFIED CLAY PIPE	VCP
HIGH DENSITY POLYETHYLENE PIPE	HDPE	WASTEWATER	WW
INVERT ELEVATION	IE or INV EL		

INDEX		FROM	TO
SHT NO.	DESCRIPTION		
1	COVER SHEET		
2	LEGEND, INDEX AND PROJECT MAP		
3	GENERAL NOTES AND PAVEMENT RESTORATION		
4	FLORA ST. (PLAN)	FLORIDA AVE.	DIXON AVE.
5	FLORA ST. (PROFILE)	FLORIDA AVE.	DIXON AVE.
6	FLORA ST. (PLAN)	DIXON AVE.	CENTRAL AVE.
7	FLORA ST. (PROFILE)	DIXON AVE.	CENTRAL AVE.
8	FLORA ST. (PLAN)	CENTRAL AVE.	NORFOLK ST.
9	FLORA ST. (PROFILE)	CENTRAL AVE.	NORFOLK ST.
10	MISCELLANEOUS GRAVITY DETAILS		
11	LATERAL CONNECTION		
12	CLEANOUT COVER DETAILS		
13	STANDARD MANHOLE DETAILS		



PROJECT MAP

NOTE: ALL WASTEWATER LINES ARE 8" OR LESS UNLESS OTHERWISE NOTED

User: SS2D Drawing Name: C:\DWG\PIPE\Flora st Florida To Central.dwg Layout- LEGEND; Last Saved: Nov 03, 2011 - 3:17pm

JACINTO CARLOS FERRAS, P.E. #49454
DESIGN DIVISION HEAD
WASTEWATER DEPARTMENT

No.	DATE	REVISIONS
3		
2		
1		

DES: D.R.
DRN: W.A.
CKD: JF
DATE: 11/16/11

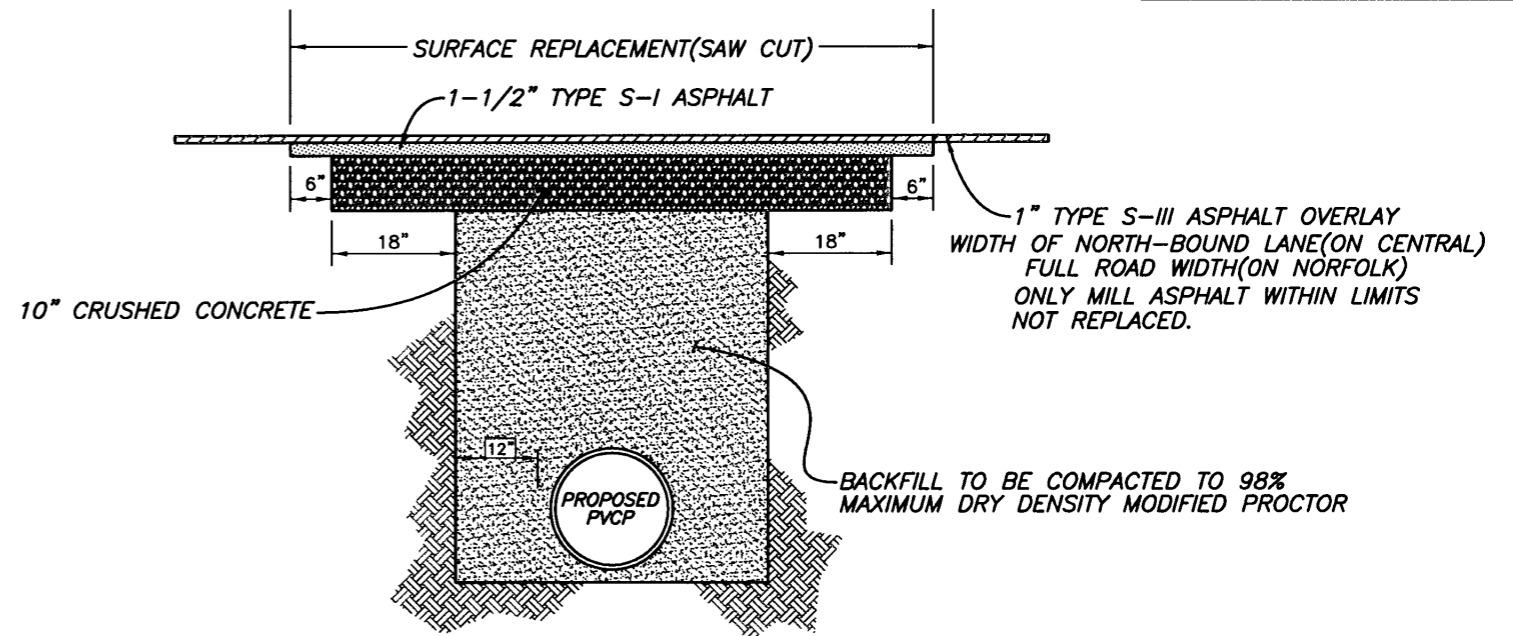
CITY of TAMPA
WASTEWATER DEPARTMENT

LEGEND, INDEX & PROJECT MAP

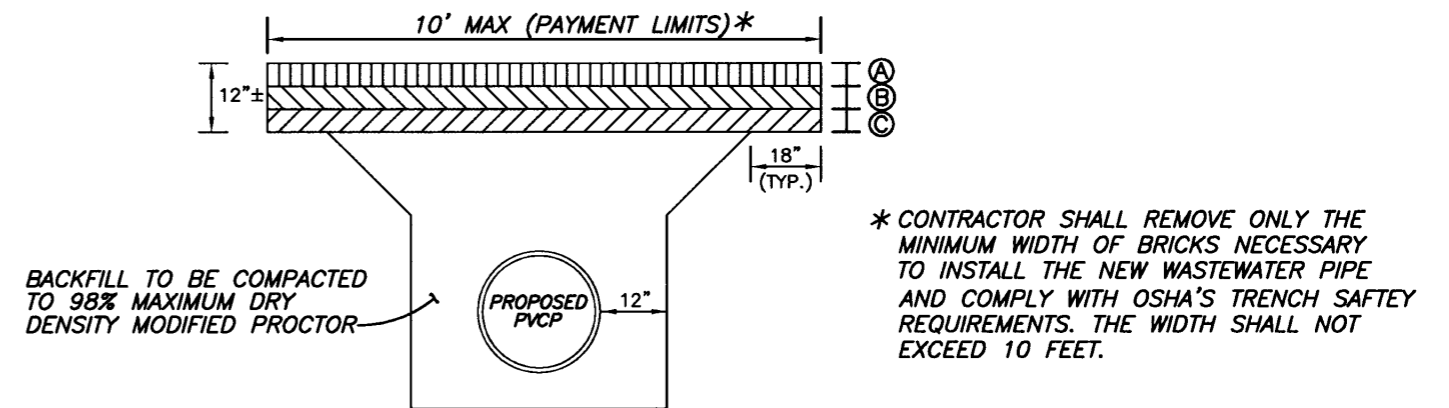
W.O. 5587
SHEET
2
OF 13

GENERAL NOTES

1. ELEVATION INFORMATION SHOWN ON THESE PLANS IS REFERENCED TO N.G.V.D. 1929 UNLESS OTHERWISE STATED.
2. LOCATIONS OF EXISTING UNDERGROUND UTILITIES WERE PREPARED FROM THE MOST RELIABLE INFORMATION AVAILABLE. VERIFY THE LOCATION AND DEPTH OF ALL PERTINENT UTILITIES PRIOR TO CONSTRUCTION. NOTIFY ALL UTILITY COMPANIES AT LEAST 48 HOURS BEFORE BEGINNING CONSTRUCTION BY CALLING SUNSHINE ONE-CALL CENTER (DIAL 811)
3. TEST HOLE DATA SHOWN ON EXISTING UTILITIES SHOULD BE CONSIDERED APPROXIMATE. CONTRACTOR SHOULD LOCATE AND VERIFY ALL PERTINENT UTILITIES PRIOR TO CONSTRUCTION.
4. PROPOSED PIPE SHALL BE GREEN ASTM D3034 PVC PIPE, SDR-35 INSTALLED WITH CLASS C BEDDING.
5. THE MINIMUM CLEARANCE BETWEEN HOUSE LATERALS AND WATER LINES SHALL BE 18" INCHES UNDER ALL CIRCUMSTANCES. IF THE LATERAL IS BELOW A WATER LINE AND HAS BETWEEN 6" AND 18" OF CLEARANCE, THEN A NOMINAL 20' LENGTH OF GREEN AWWA CLASS 150 C-900 PVC PIPE SHALL BE CENTERED OVER/UNDER THE WATER LINE.
6. CONNECTION BETWEEN NEW PVC AND EXISTING VCP/CONCRETE PIPES SHALL BE MADE USING FLEXIBLE COUPLINGS WITH STAINLESS STEEL SHEAR RINGS. CONNECTIONS BETWEEN NEW PVC AND EXISTING PVC SHALL BE MADE USING RIGID PVC ADAPTERS.
7. EXISTING 4" LATERALS SHALL BE REPLACED WITH 6" LATERALS AS SHOWN ON THE LATERAL CONNECTION DETAIL.
8. CONTINUOUS SEWER SERVICE MUST BE MAINTAINED BY THE CONTRACTOR AT ALL TIMES. CONTRACTOR SHALL PROVIDE BY-PASS PUMPING SIZED FOR 400 GPM. A BY-PASS PUMPING PLAN SHALL BE SUBMITTED FOR APPROVAL. CONTRACTOR MUST MAINTAIN ACCESS TO ALL STREETS AND DRIVEWAYS FOR THE DURATION OF THE PROJECT.
9. CONTRACTOR SHALL PROTECT ALL TREES IN THE VICINITY OF THE PROPOSED CONSTRUCTION IN ACCORDANCE WITH CHAPTER 13 OF THE CITY OF TAMPA CODE. NO TREES SHALL BE PRUNED WITHOUT PRIOR APPROVAL FROM THE CITY OF TAMPA PARKS & RECREATION DEPARTMENT, NATURAL RESOURCES DIVISION, AND SHALL BE COMPLETED BY A CERTIFIED ARBORIST. ROOT PRUNING MAY BE REQUIRED AT CERTAIN LOCATIONS AND SHALL BE COMPLETED IN ACCORDANCE WITH CHAPTER 13 TECHNICAL MANUAL SPECIFICATIONS.
10. CONTRACTOR SHALL OBTAIN A RIGHT-OF-WAY CLOSURE PERMIT FROM THE CITY OF TAMPA RIGHT-OF-WAY DEPARTMENT.
11. RESTORATION NOTES:
RESTORATION SHALL BE TO CITY OF TAMPA STANDARDS. REPLACE FULL SIDEWALK AND DRIVEWAY PANELS FROM CONSTRUCTION JOINT TO CONSTRUCTION JOINT. REPLACE GRASS BY SODDING. BRICK RESTORATION WILL BE LIMITED TO 10' AS SHOWN ON THE DETAIL. COMPACT ALL SUB GRADE TO 98% OF AASHTO T-180.
12. CONTRACTOR SHALL REMOVE EXISTING BRICKS BY HAND. THE CITY WILL SUPPLY THE BRICKS TO REPLACE EXISTING BROKEN BRICKS ONLY IF THE CONTRACTOR SHOWS THAT ALL PRECAUTIONS WERE TAKEN TO MINIMIZE LOSS OR BREAKAGE OF BRICKS.



ASPHALT PAVEMENT RESTORATION DETAIL
NOT TO SCALE

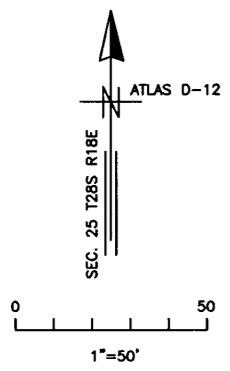


BRICK PAVEMENT RESTORATION DETAIL
NOT TO SCALE

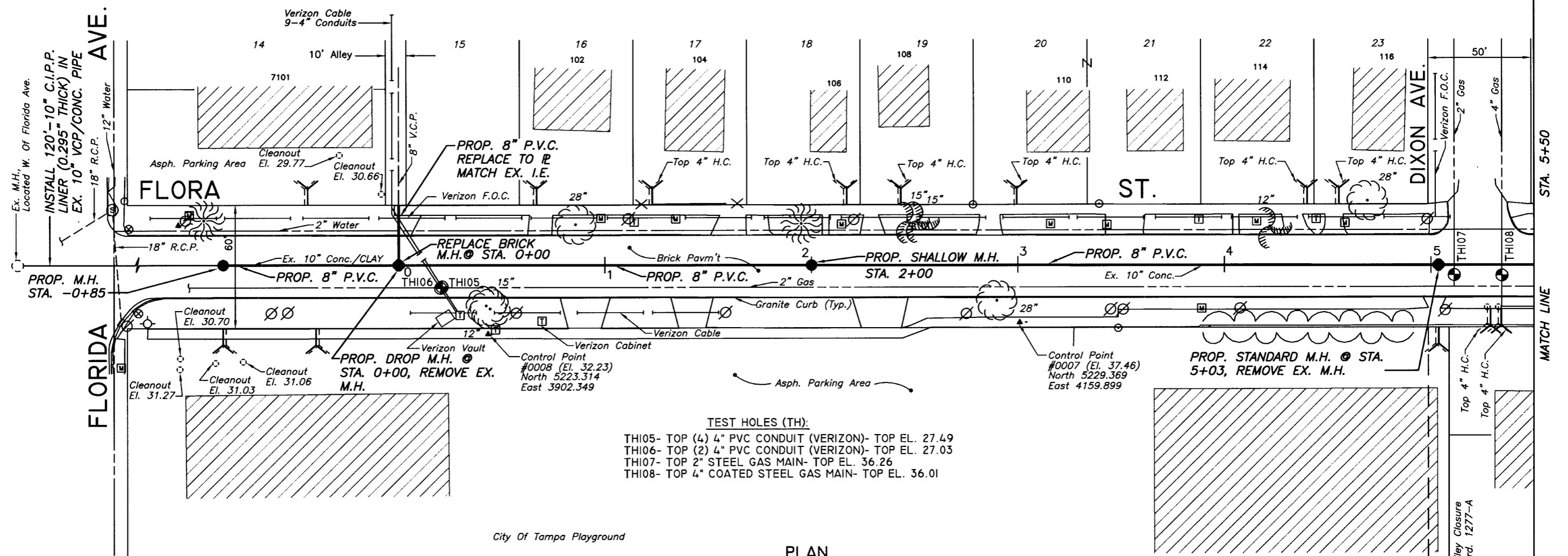
- A. RE-LAY EXISTING BRICKS UNIFORMLY STAGGERED WITH RESPECT TO THE ADJACENT BRICKS. FINISHED ROAD ELEVATIONS SHOULD MATCH PRE-CONSTRUCTION CONDITIONS. SWEEP CONSTRUCTION SAND OVER THE BRICKS TO FILL BRICK JOINTS PER SPECIFICATIONS.
 - B. 2" OF GRADED CONSTRUCTION SAND OR FINELY GRADED CRUSHED CONCRETE. GRADE TO CREATE A UNIFORM SURFACE ON WHICH TO INSTALL THE BRICKS.
 - C. COMPACTED 8" THICK CRUSHED CONCRETE BASE.
- NOTE: NO CONCRETE SLAB BASE IS ALLOWED.

User: SS2D Drawing Name: C:\DWG\PIPE\Flora st Florida To Central.dwg Layout- NOTES; Last Saved: Nov 03, 2011 - 4:05pm

JACINTO CARLOS FERRAS, P.E. #49454 DESIGN DIVISION HEAD WASTEWATER DEPARTMENT	No.	DATE	REVISIONS	DES: D.R. DRN: W.A. CKD: JF DATE: 11/16/11	CITY of TAMPA WASTEWATER DEPARTMENT	GENERAL NOTES & PAVEMENT RESTORATION DETAIL	W.O. 5587
	3						SHEET
	2						3
	1						OF 13



VINE PARK
BLK. 3

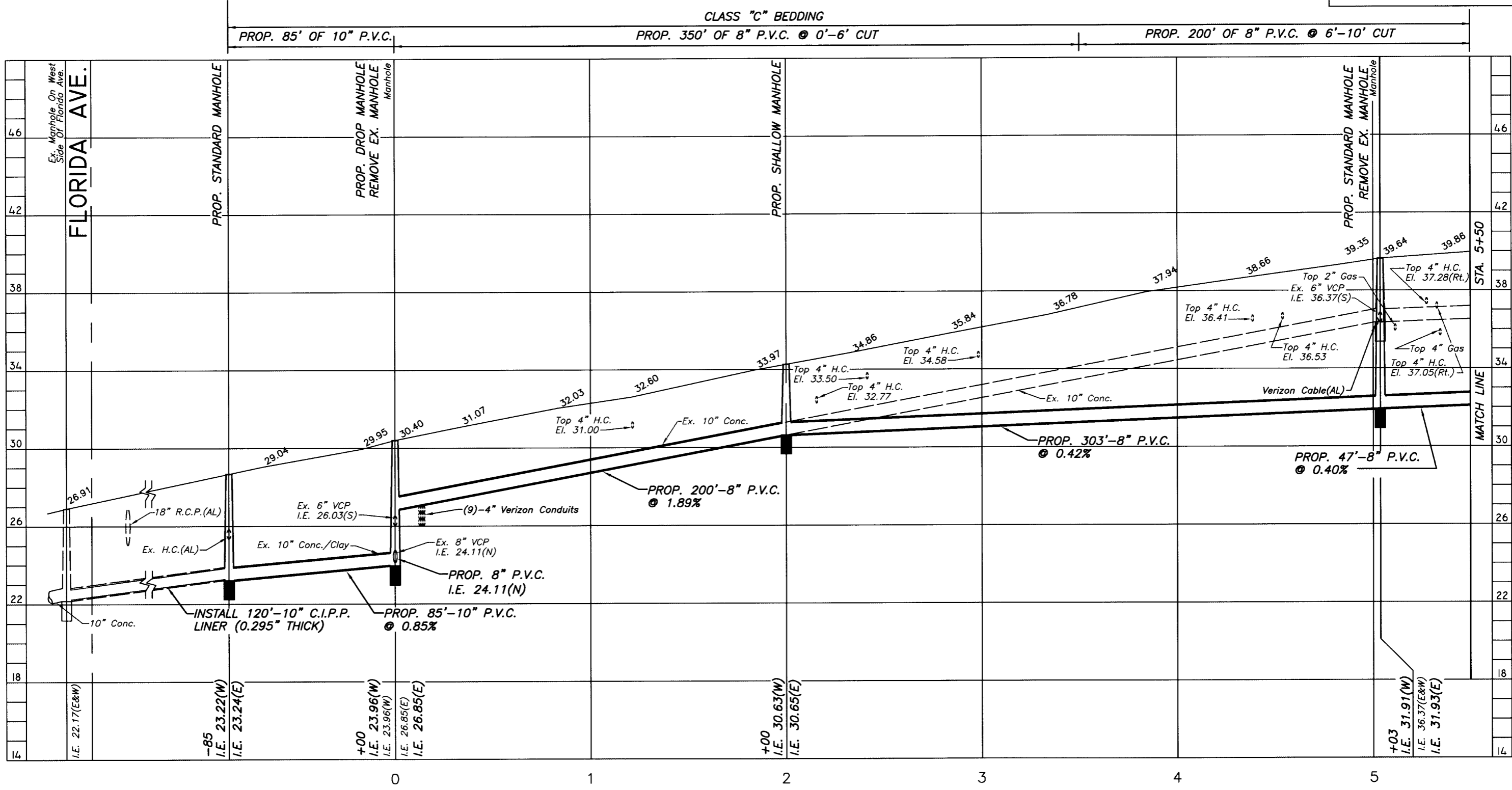


TEST HOLES (TH):
 TH105- TOP (4) 4" PVC CONDUIT (VERIZON)- TOP EL. 27.49
 TH106- TOP (2) 4" PVC CONDUIT (VERIZON)- TOP EL. 27.03
 TH107- TOP 2" STEEL GAS MAIN- TOP EL. 36.26
 TH108- TOP 4" COATED STEEL GAS MAIN- TOP EL. 36.01

PLAN

User: SS2D Drawing Name: C:\DWG\PIPE\Flora st Florida To Central.dwg Layout- Nov 03, 2011 - 4:05pm CTB - MW.CTB

JACINTO CARLOS FERRAS, P.E. #49454 DESIGN DIVISION HEAD WASTEWATER DEPARTMENT	No.	DATE	REVISIONS	DES: D.R.	CITY of TAMPA WASTEWATER DEPARTMENT	FLORA ST. GRAVITY REPLACEMENT	W.O. 5587
	3			DRN: W.A.			SHEET
	2			CKD: JF			4
	1			DATE: 11/16/11			OF 13



PROFILE

SCALE:
1"=50' HORIZ.
1"=5' VERT.

User: SS2D Drawing Name: C:\DWG\PIPE\Flora st Florida To Central.dwg
Layout- Nov 03, 2011 - 3:17pm CTB - WW.CTB

JACINTO CARLOS FERRAS, P.E. #49454
DESIGN DIVISION HEAD
WASTEWATER DEPARTMENT

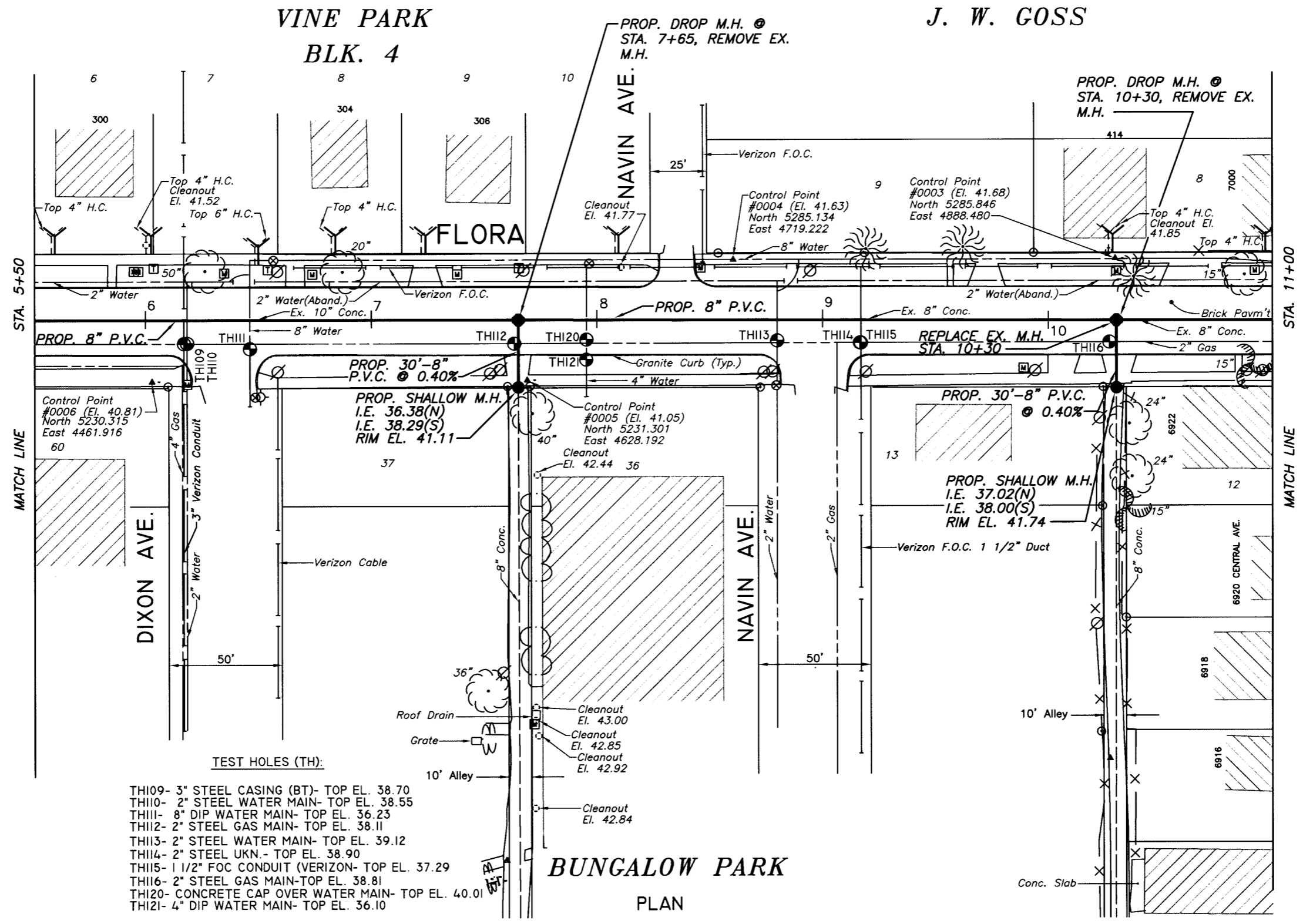
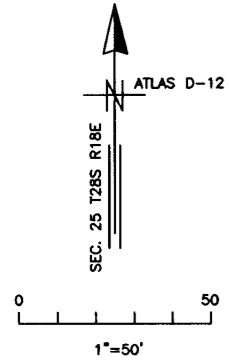
No.	DATE	REVISIONS
3		
2		
1		

DES: D.R.
DRN: W.A.
CKD: JK
DATE: 11/16/11

CITY of TAMPA
WASTEWATER DEPARTMENT

FLORA ST. GRAVITY REPLACEMENT

W.O. 5587
SHEET
5
OF 13



BUNGALOW PARK
PLAN

User: SS2D Drawing Name: C:\DWG\PIPE\Flora st Florida To Central.dwg Layout- Nov 03, 2011 - 3:17pm CTB - MW.CTB

No.	DATE	REVISIONS
3		
2		
1		

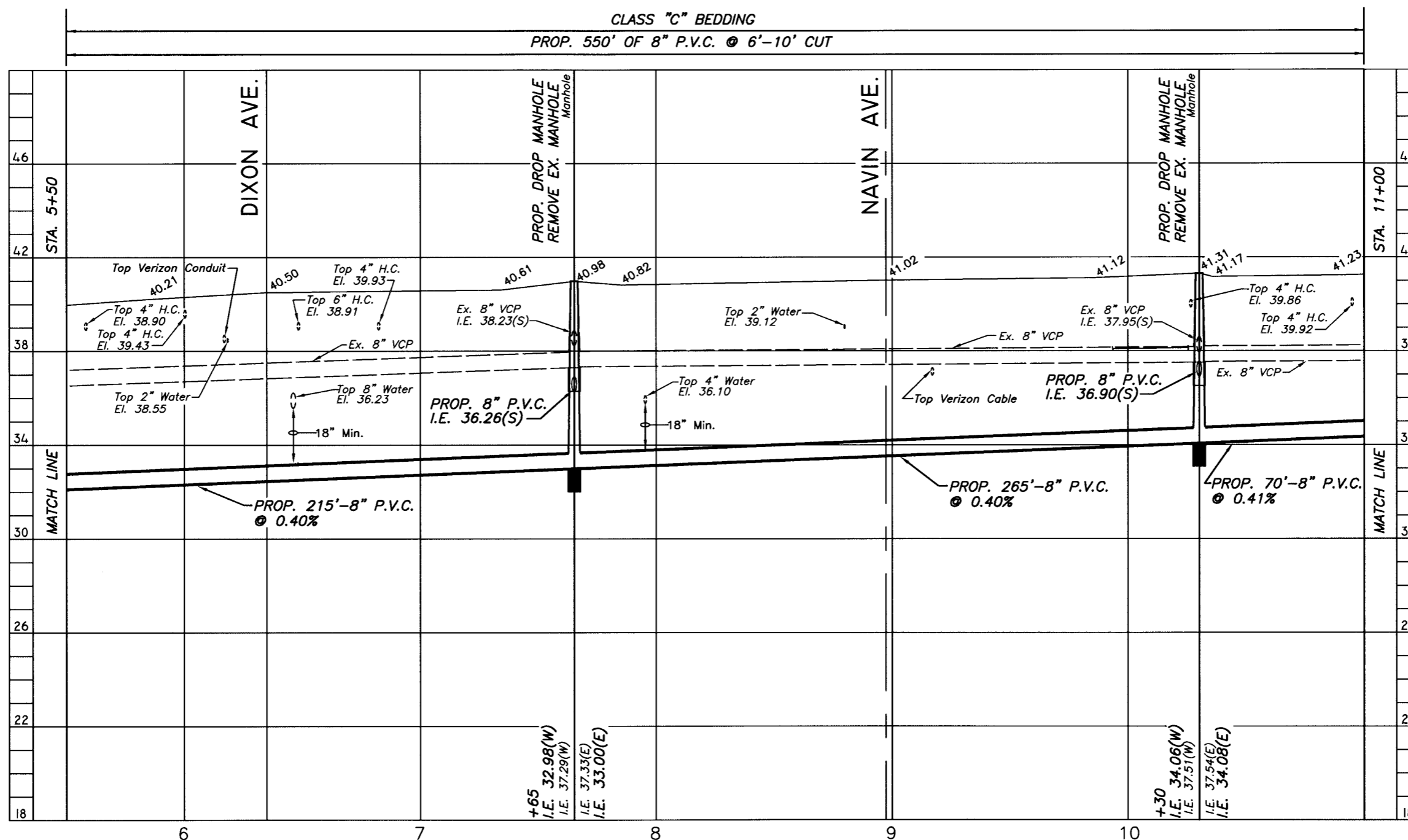
DES: D.R.
DRN: W.A.
CKD: JF
DATE: 11/16/11

CITY of TAMPA
WASTEWATER DEPARTMENT

FLORA ST. GRAVITY REPLACEMENT

W.O. 5587
SHEET
6
OF 13

JACINTO CARLOS FERRAS, P.E. #49454
DESIGN DIVISION HEAD
WASTEWATER DEPARTMENT



PLAN

SCALE:
1"=50' HORIZ.
1"=5' VERT.

User: SS2D Drawing Name: C:\DWG\PIPE\Flora st Florida To Central.dwg
Layout: Nov 03, 2011 - 4:05pm CTB - MW.CTB

JACINTO CARLOS FERRAS, P.E. #49454
DESIGN DIVISION HEAD
WASTEWATER DEPARTMENT

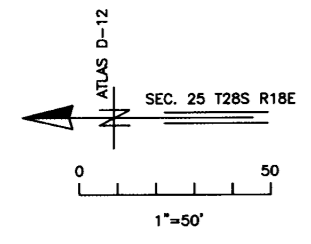
No.	DATE	REVISIONS
3		
2		
1		

DES: D.R.
DRN: W.A.
CKD: JF
DATE: 11/16/11

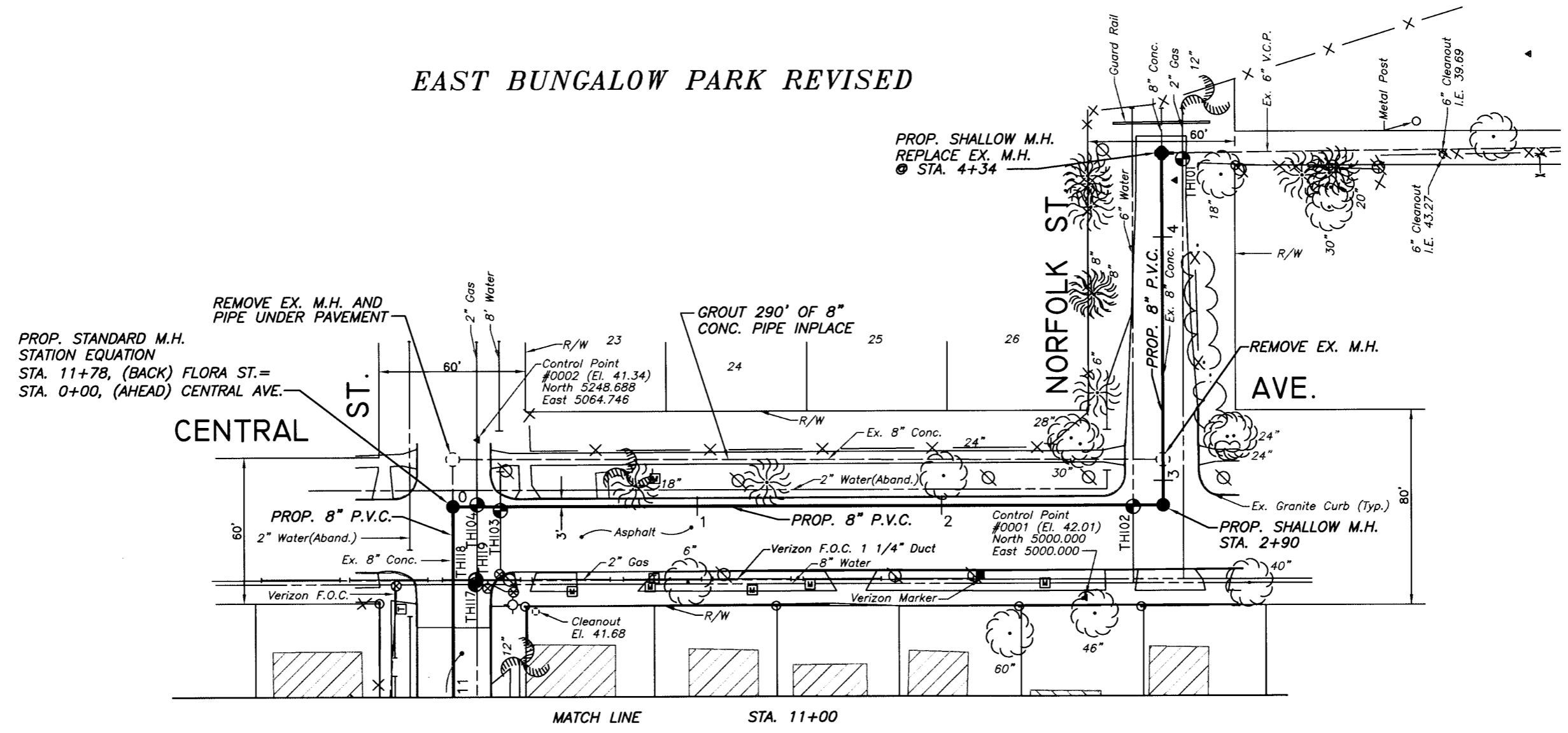
CITY of TAMPA
WASTEWATER DEPARTMENT

FLORA ST. GRAVITY REPLACEMENT

W.O. 5587
SHEET
7
OF 13



EAST BUNGALOW PARK REVISED



PROP. STANDARD M.H.
STATION EQUATION
STA. 11+78, (BACK) FLORA ST.=
STA. 0+00, (AHEAD) CENTRAL AVE.

CENTRAL ST.

NORFOLK ST

AVE.

MATCH LINE STA. 11+00

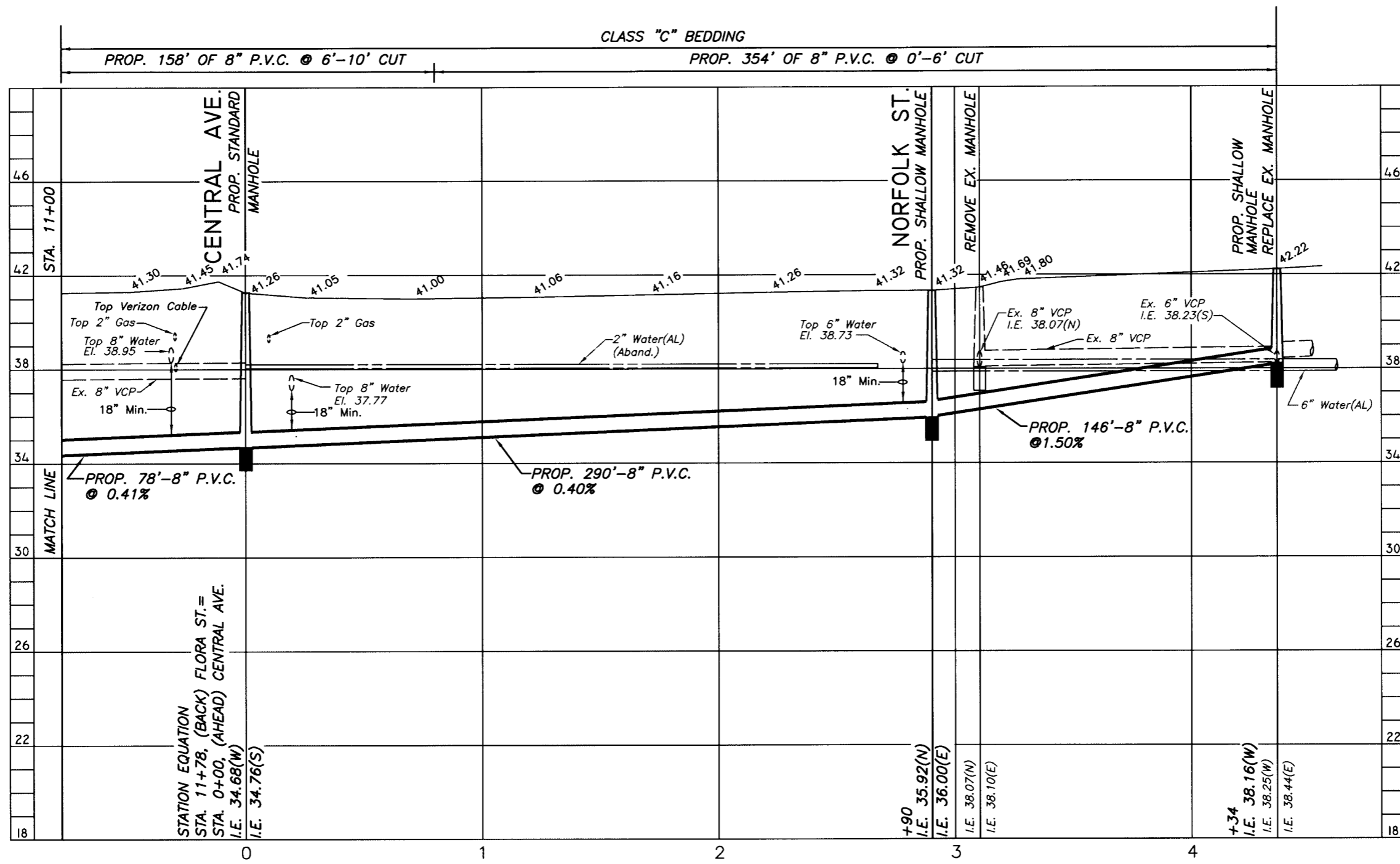
TEST HOLES (TH):

- TH101- 2" STEEL GAS MAIN- TOP EL. 40.55
- TH102- 6" CIP WATER MAIN- TOP EL. 38.73
- TH103- 8" CIP WATER MAIN- TOP EL. 37.77
- TH104- 2" STEEL GAS MAIN- TOP EL. 39.49
- TH117- 8" CIP WATER MAIN- TOP EL. 38.95
- TH118- 2" STEEL GAS MAIN- TOP EL. 39.57
- TH119- 1-1/4" FOC DUCT- TOP EL. 38.25

PLAN

User: SS2D Drawing Name: C:\DWG\PIPE\Flora st Florida To Central.dwg Layout: Nov 03, 2011 - 3:17pm CTB - MW.CTB

JACINTO CARLOS FERRAS, P.E. #49454 DESIGN DIVISION HEAD WASTEWATER DEPARTMENT	No.	DATE	REVISIONS	DES: D.R.	CITY of TAMPA WASTEWATER DEPARTMENT	FLORA ST. GRAVITY REPLACEMENT	W.O. 5587
	3			DRN: W.A.			SHEET
	2			CKD: JF			8
	1			DATE: 11/16/11			OF 13

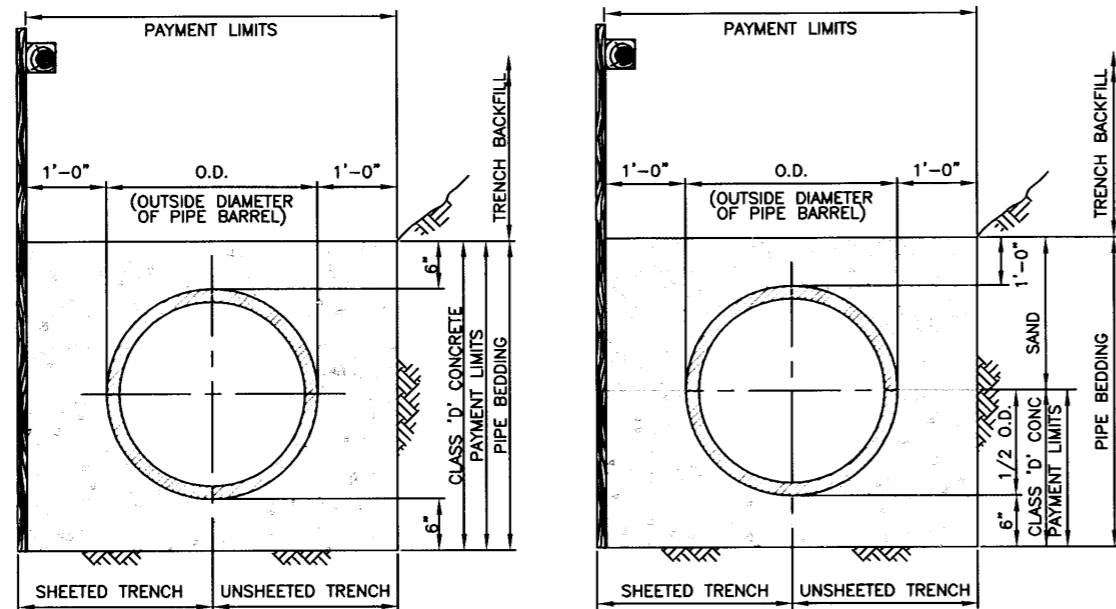


PROFILE

SCALE:
1"=50' HORIZ.
1"=5' VERT.

User: SS2D Drawing Name: C:\DWG\PIPE\Flora st Florida To Central.dwg
Layout- Nov 03, 2011 - 3:17pm CTB - MW.CTB

JACINTO CARLOS FERRAS, P.E. #49454 DESIGN DIVISION HEAD WASTEWATER DEPARTMENT	No.	DATE	REVISIONS	DES: D.R. DRN: W.A. CKD: JF DATE: 11/16/11	CITY of TAMPA WASTEWATER DEPARTMENT	FLORA ST. GRAVITY REPLACEMENT	W.O. 5587 SHEET 9 OF 13
	3						
	2						
	1						

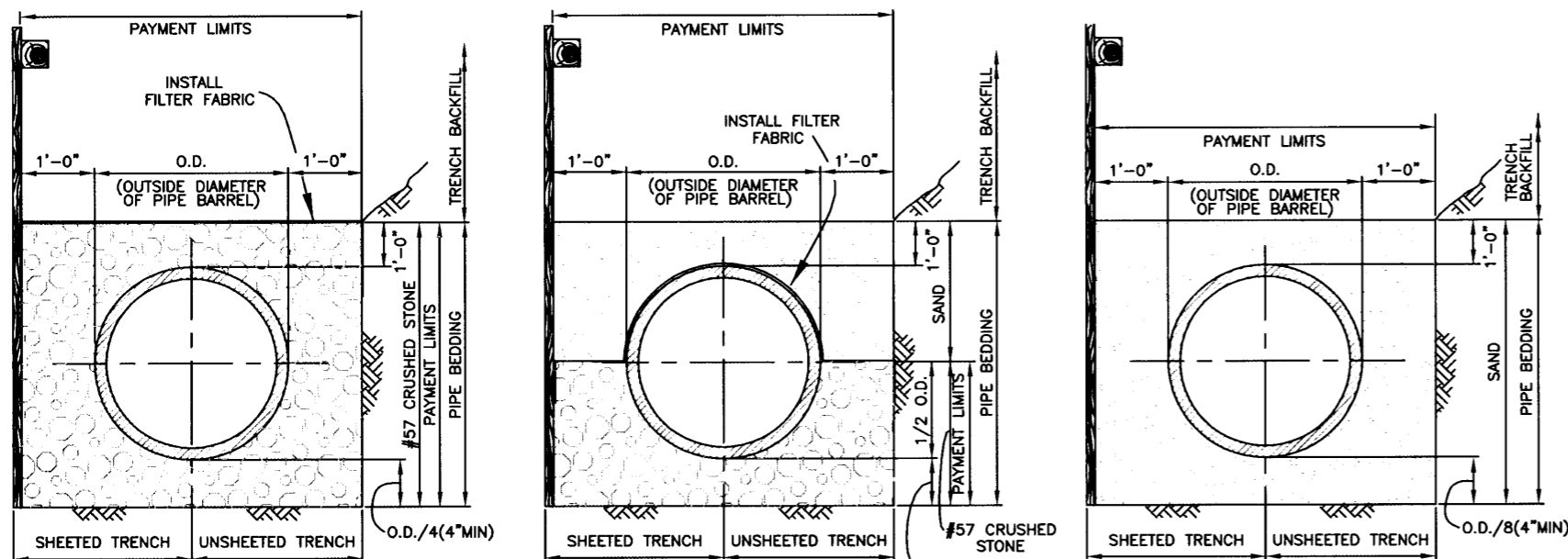


CONCRETE ENCASEMENT

CLASS A BEDDING (CONCRETE CRADLE)

NOTES:

1. ALL TYPES OF PIPE BEDDING SHALL EXTEND TO UNDISTURBED EARTH AT SIDES AND BOTTOM OF THE TRENCH.
2. SAND AND CRUSHED STONE PIPE BEDDING SHALL BE PLACED AND COMPACTED IN ACCORDANCE WITH SPECIFICATIONS.

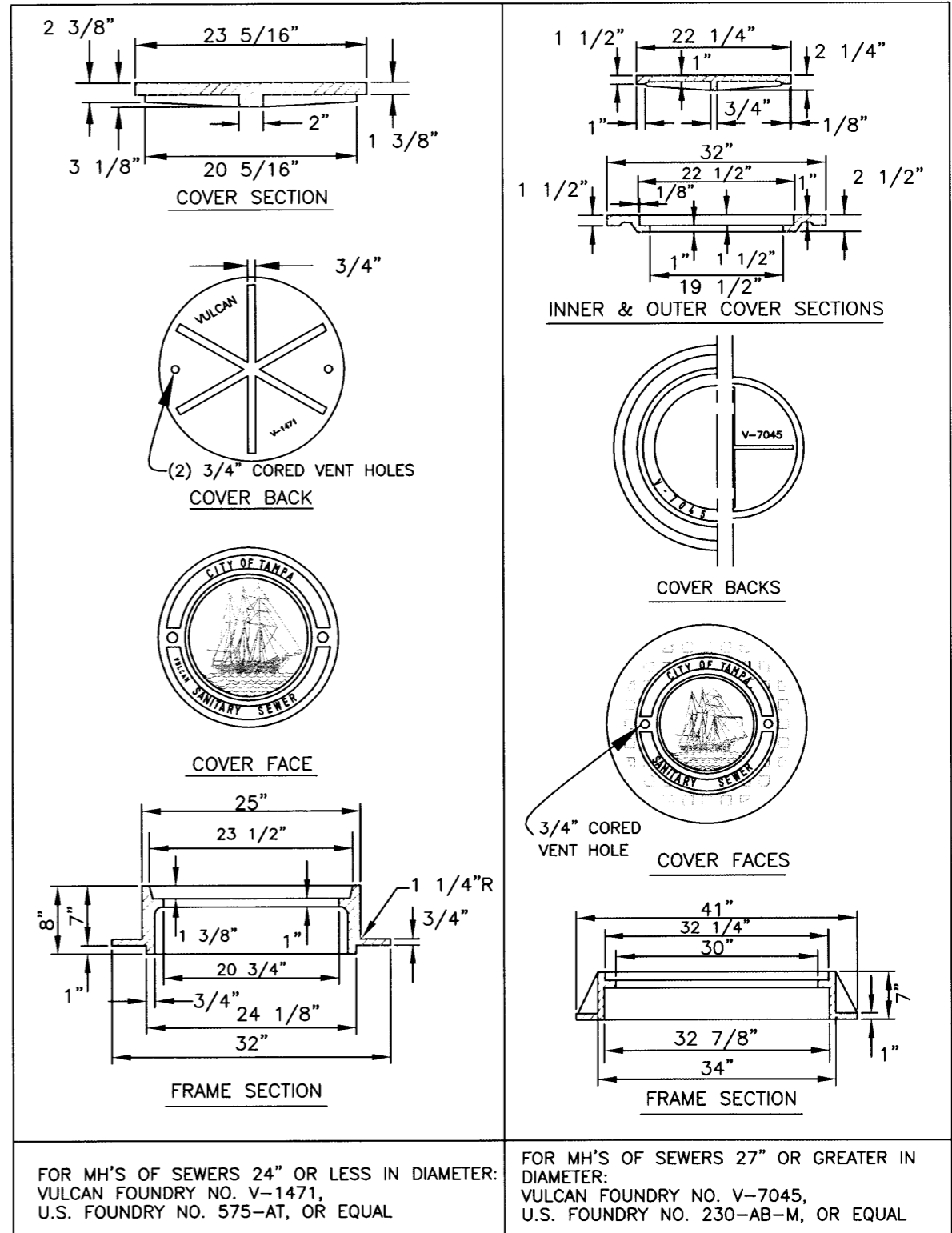


CLASS B-I BEDDING

CLASS B BEDDING
(ONLY ALLOWED WITH CITY INSPECTOR APPROVAL)

CLASS C BEDDING

PIPE BEDDING DETAILS



HEAVY DUTY CAST IRON MANHOLE
FRAME & COVER DETAILS

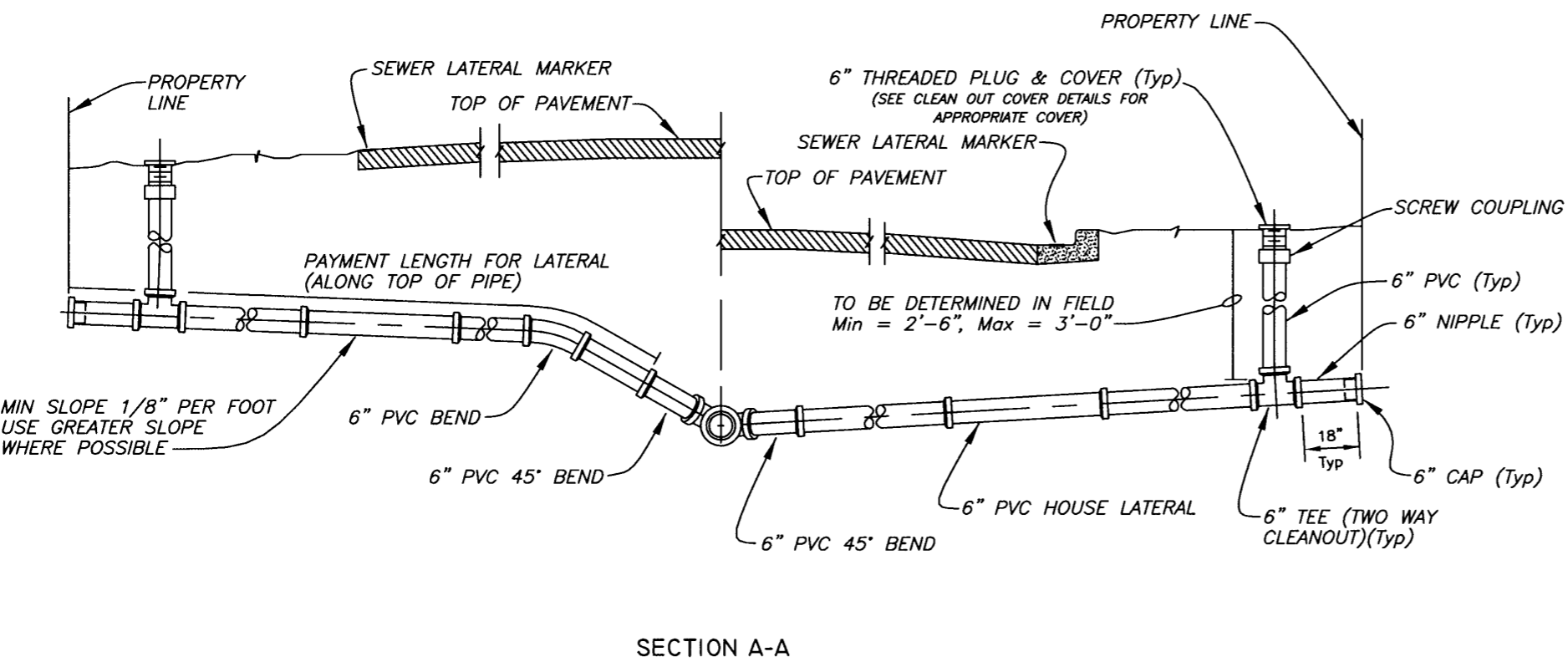
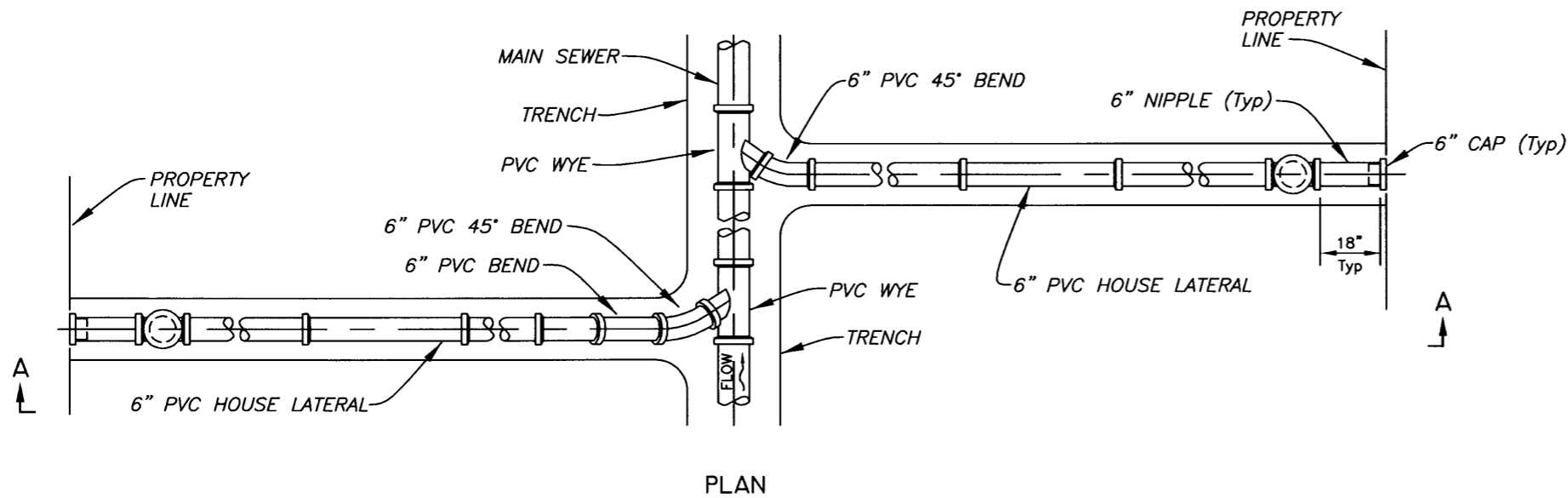
No.	DATE	REVISIONS
3		
2		
1		

DES: D.R.
DRN: W.A.
CKD: JF
DATE: 11/16/11

CITY of TAMPA
WASTEWATER DEPARTMENT

STANDARD DETAILS
MISC. GRAVITY DETAILS

W.O. 5587
SHEET
10
OF 13



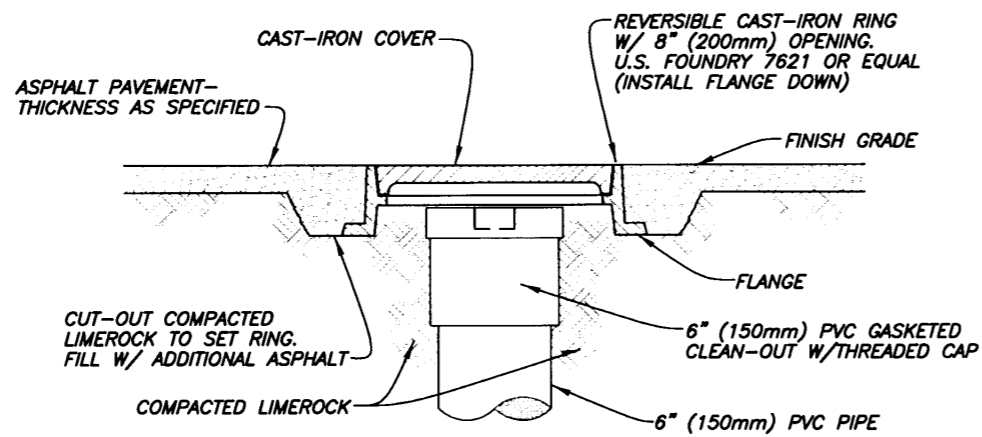
TYPE A HOUSE LATERAL DETAIL
NOT TO SCALE

NOTES:

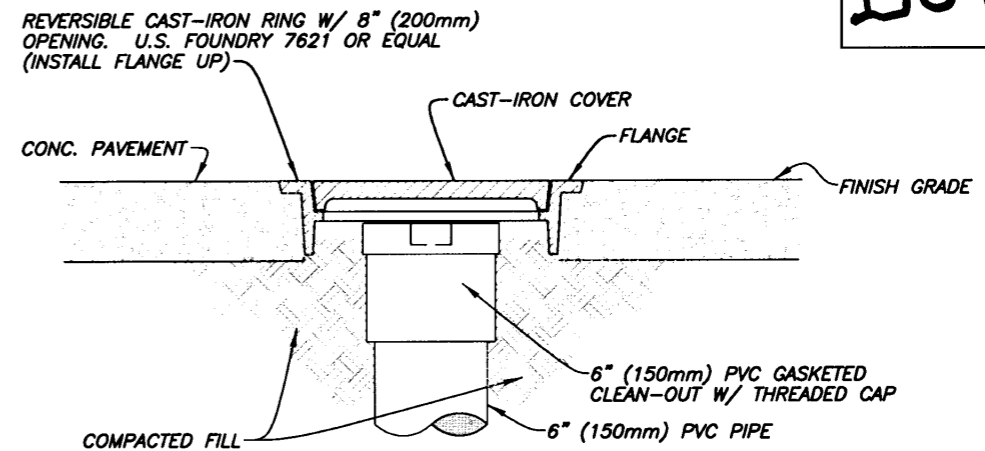
1. The locations of house laterals by symbols on plans are approximate only and the actual location and slopes will be determined in the field by the contractor with the approval of the engineer.
2. The minimum diameter of all house laterals shall be 6 inches.
3. House laterals which pass under drainage ditches with less than 18" of cover or which have less than 30" of cover under pavement shall be Class 54 poly-lined DIP per specifications.
4. The department's standard regarding vertical perpendicular conflicts requires that there be a minimum of 18" clearance between house laterals and all crossing utilities. If, however, conditions dictate that it is impossible to meet this standard, the following notes are intended to address the most common conflict conditions.
 - A. The minimum clearance between house laterals and water lines shall be 6" under all circumstances. If the house lateral is below a water line and has between 6" and 18" of clearance or if the lateral is above the water line regardless of clearance, then a nominal 20' length of green AWWA Class 150 C900 PVC pipe shall be centered over/under the water line.
 - B. If the house lateral must pass over any utility other than a water line with less than 18" clearance, the lateral shall remain SDR 35 PVC pipe.
 - C. If the house lateral must pass under any utility other than a water line with less than 18" clearance, the lateral shall remain SDR 35 PVC pipe unless the utility poses a structural load too great for the PVC lateral as determined by the engineer, each conflict will be reviewed on a case by case basis.
5. Transitions from SDR 35 PVC to either C900 or ductile iron pipes shall be made with PVC rigid adaptors. Transitions from SDR 35 PVC to either existing clay or concrete pipes shall be made with a Fernco 1000 series flexible coupling with stainless steel shear ring or approved equal.

User: SS2D Drawing Name: C:\DWG\PIPE\Flora st Florida To Central.dwg Layout- Nov 03, 2011 - 3:17pm CTB - MONO.CTB

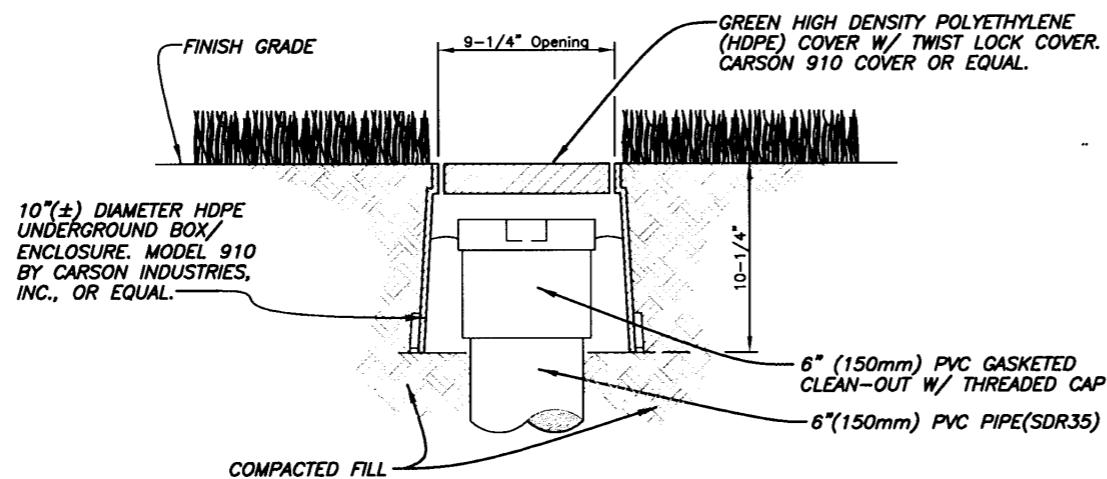
JACINTO CARLOS FERRAS, P.E. #49454 DESIGN DIVISION HEAD WASTEWATER DEPARTMENT	No.	DATE	REVISIONS	DES: D.R. DRN: W.A. CKD: JCF DATE: 11/16/11	CITY of TAMPA WASTEWATER DEPARTMENT	STANDARD DETAILS LATERAL CONNECTIONS	W.O. 5587
	3						SHEET
	2						11
	1						OF 13



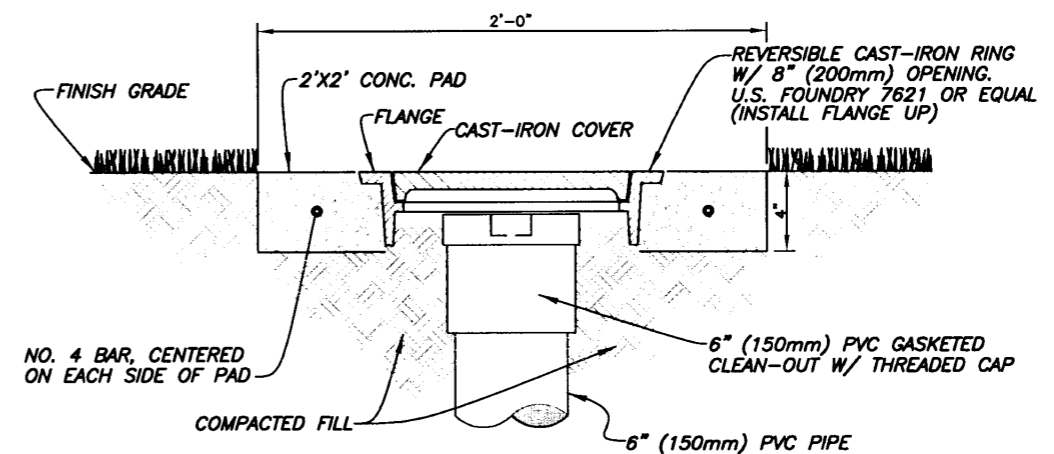
CLEAN-OUT W/ COVER FOR ASPHALT PAVED AREAS
Not to Scale



CLEAN-OUT W/ COVER FOR CONCRETE PAVED AREAS
Not to Scale



CLEAN-OUT W/ COVER FOR GRASS (NON-VEHICULAR TRAFFIC) AREAS
Not to Scale



CLEAN-OUT W/COVER FOR GRASSED AREAS W/VEHICULAR TRAFFIC
Not to Scale

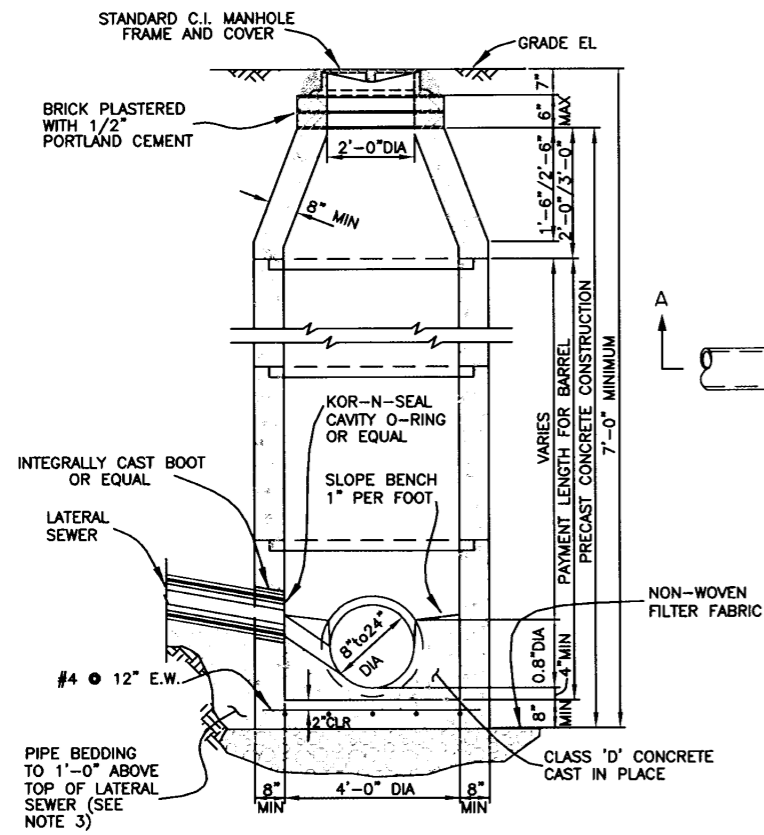
NOTES:

1. Contractor shall adjust the clean-out and cast iron ring and cover or HDPE box and cover so that the cover is seated securely and the top of the cover is flush with the finish grade. The PVC cap of the clean-out shall be no more than 4 inches deeper than the finish grade.
2. PVC cap may be provided with recessed nut.
3. Cast iron cover shall be provided with an embossed letter "S" for identification, HDPE cover shall be marked "SEWER" for identification.
4. Cast iron ring and cover, or HDPE box and cover, as well as the four (4 sf) square feet of material (concrete or asphalt around the clean-out), are part of the clean out installation and cost shall be included within the unit price for clean-out with no additional payment.
5. All clean-outs on this project shall be one of the four types shown on this sheet. Field conditions will determine which type.

CLEANOUT COVER DETAILS
NOT TO SCALE

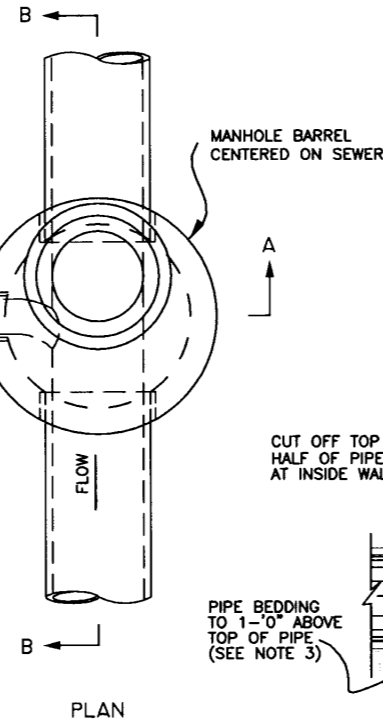
User: SS2D Drawing Name: C:\DWG\PIPE\Flora.st Florida To Central.dwg Layout: Nov 03, 2011 - 3:17pm CTB - MW,CTB

JACINTO CARLOS FERRAS, P.E. #49454 DESIGN DIVISION HEAD WASTEWATER DEPARTMENT	No.	DATE	REVISIONS	DES: D.R. DRN: W.A. CKD: JF DATE: 11/16/11	CITY of TAMPA WASTEWATER DEPARTMENT	STANDARD DETAILS CLEANOUT COVER DETAILS	W.O. 5587
	3						SHEET
	2						12
	1						OF 13

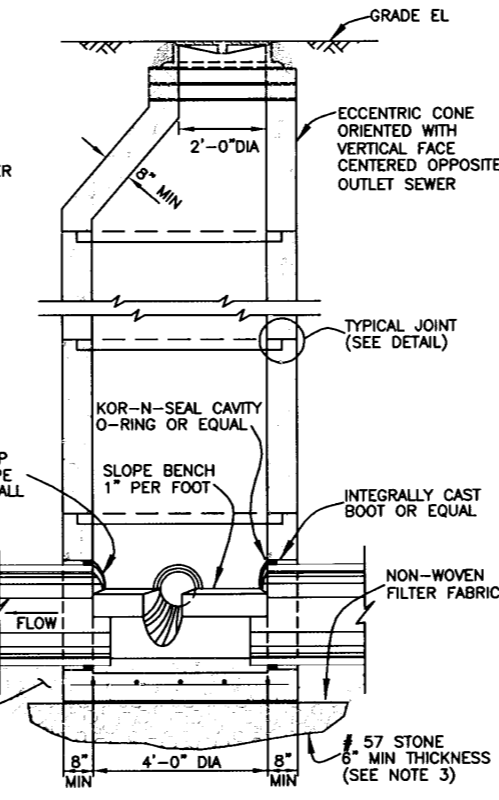


SECTION A-A

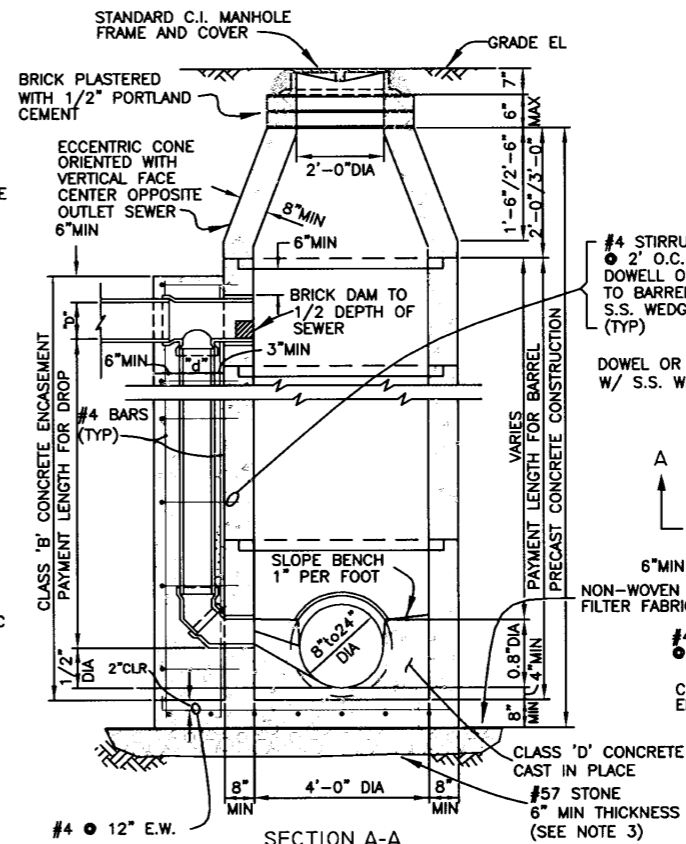
STANDARD MANHOLE - DEEP TYPE
FOR SEWERS 24" OR LESS IN DIAMETER



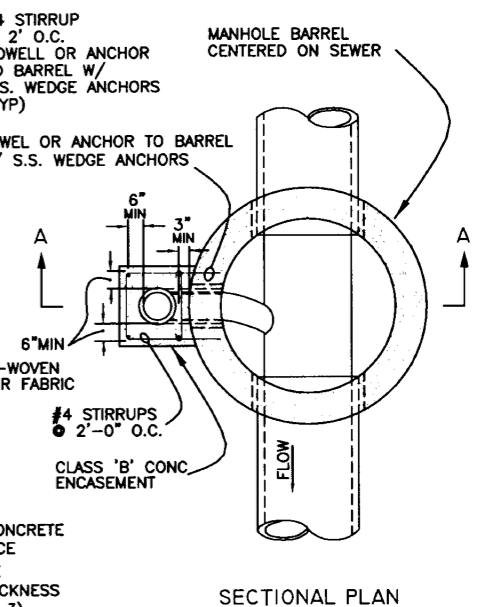
PLAN



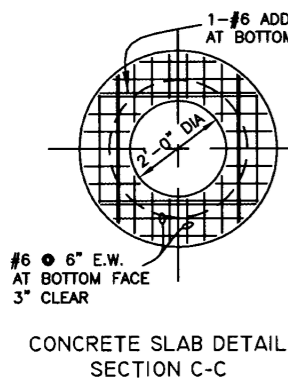
SECTION B-B



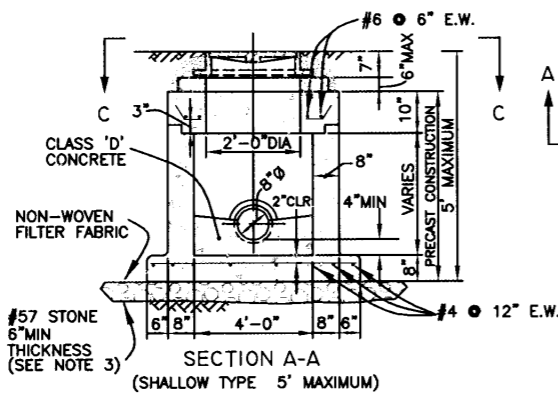
STANDARD DROP MANHOLE
FOR SEWERS 24" OR LESS IN DIAMETER



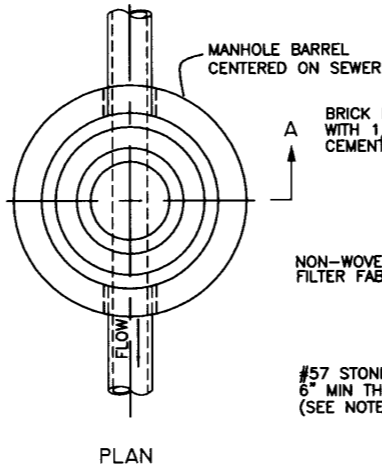
SECTIONAL PLAN



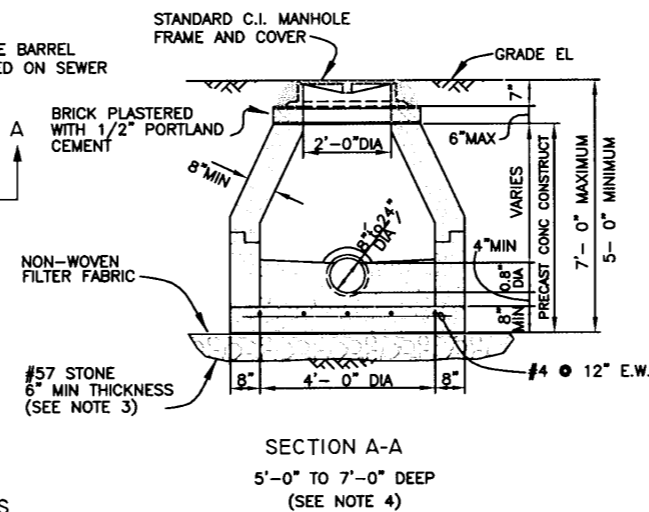
CONCRETE SLAB DETAIL
SECTION C-C



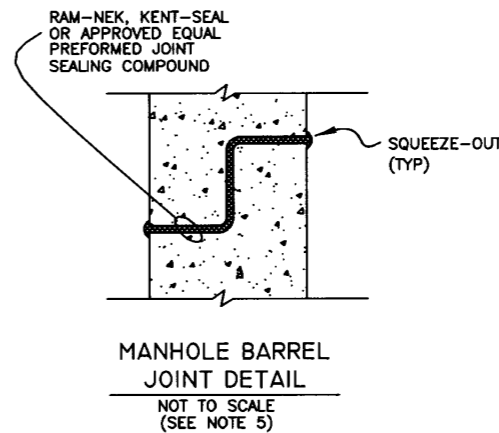
STANDARD MANHOLE - SHALLOW TYPE
FOR SEWERS 24" OR LESS IN DIAMETER



PLAN

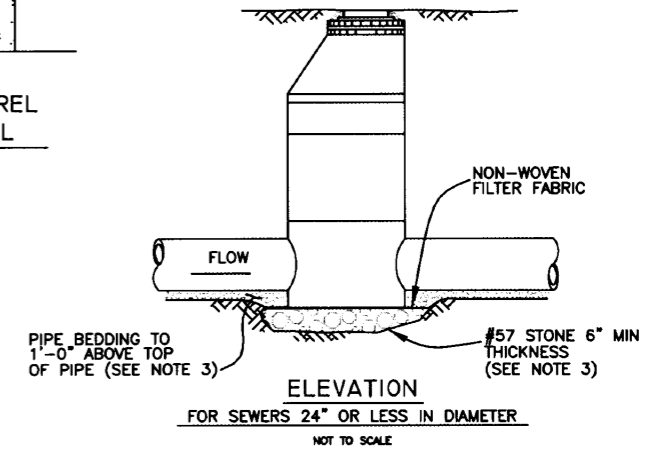


SECTION A-A
5'-0" TO 7'-0" DEEP
(SEE NOTE 4)



MANHOLE BARREL
JOINT DETAIL
NOT TO SCALE
(SEE NOTE 5)

SCHEDULE FOR DROP MANHOLE	
INLET PIPE DIAMETER "D"	DROP PIPE DIAMETER "d"
8"	8"
10"	8"
12"	10"
15"	12"
18"	15"
21"	18"
24"	18"



ELEVATION
FOR SEWERS 24" OR LESS IN DIAMETER
NOT TO SCALE

- NOTES
- REINFORCING STEEL FOR ALL MANHOLES SHALL CONFORM TO ASTM-C478: C-48 AND PLACED AS DESCRIBED IN THE SPECIFICATIONS.
 - ALL PIPE STUBS FROM MANHOLES FOR FUTURE CONNECTIONS OR OTHER CONTRACT DIVISIONS SHALL BE PROVIDED WITH WATER TIGHT PLUGS PLACED FROM WITHIN THE MANHOLE.
 - SEE SPECIFICATIONS FOR MATERIALS REQUIREMENTS AND PLACEMENTS AND COMPACTION OF PIPE AND STRUCTURE BEDDING.
 - STANDARD SHALLOW-TYPE MANHOLES WITH DEPTHS BETWEEN A MAXIMUM OF 7'-0" AND A MINIMUM OF 5'-0" MUST HAVE A CONCRETE CONE FOR THE TOP SECTION.
 - ALL MANHOLE JOINTS MUST BE SEALED WITH AN ACCEPTABLE JOINT SEALING COMPOUND REGARDLESS OF WHETHER AN O-RING GASKET IN A PREFORMED GROOVE IS USED.
 - FILTER FABRIC SHALL BE NON-WOVEN FABRIC PER D.O.T. SPECIFICATION SECTIONS 514 AND 985 AND SHALL BE WRAPPED ENTIRELY AROUND THE #57 STONE.

User: SS2D Drawing Name: C:\DWG\PIPE\Flora st Florida To Central.dwg Layout: Nov 03, 2011 - 3:17pm CTB - WW.CTB

No.	DATE	REVISIONS
3		
2		
1		

DES: D.R.
DRN: W.A.
CKD: JF
DATE: 11/16/11

CITY of TAMPA
WASTEWATER DEPARTMENT

STANDARD DETAILS
STANDARD MANHOLE 8" TO 24"

W.O. 5587
SHEET
13
OF 13