

RESOLUTION NO. 2010-03
1 (Type)

A RESOLUTION APPROVING AN AGREEMENT BETWEEN THE CITY OF TAMPA AND GREELEY AND HANSEN LLC FOR ENGINEERING SERVICES IN CONNECTION WITH CONTRACT 11-D-00012; - DESIGN AGREEMENT FOR YBOR PUMPING STATION REHABILITATION; AUTHORIZING THE MAYOR TO EXECUTE THE AGREEMENT; PROVIDING FOR THE FUNDING THEREOF; AND PROVIDING AN EFFECTIVE DATE.

WHEREAS, in accordance with the Consultants' Competitive Negotiations Act, the City has made selection and desires to enter into an Agreement with Greeley and Hansen, LLC., for professional Architectural/Engineering Services in connection with the Ybor Pumping Station Rehabilitation Project, which requires City Council approval.

NOW, THEREFORE,

BE IT RESOLVED BY THE CITY COUNCIL,
OF THE CITY OF TAMPA, FLORIDA THAT:

Section 1. The Agreement between the City of Tampa and Greeley and Hansen, LLC, for professional Architectural/Engineering services in connection with the 11-D-00012; Ybor Pumping Station Rehabilitation Project, a copy of which is attached hereto and made part hereof, is authorized and approved in its entirety or in substantially similar form.

Section 2. The Mayor is authorized to execute and the City Clerk to attest and to affix the official seal to the Agreement for and on behalf of the City of Tampa.

Section 3. Payment of the costs of the services rendered in connection with the Agreement, in the amount of \$248,051, shall be made from funds provided in the budget of the City of Tampa for the Fiscal Year ending September 30, 2011, in Account No. SS0442BDM-06305.

Section 4. The proper officers of the City of Tampa are hereby authorized to do all things necessary in order to carry out the provisions of this Resolution, which shall take effect immediately upon its adoption.

PASSED AND ADOPTED BY THE CITY COUNCIL OF THE CITY OF

TAMPA, FLORIDA, ON FEB 03 2011.

ATTEST:


CITY CLERK/DEPUTY CITY CLERK
COUNCIL


CHAIRMAN/CHAIRMAN PRO-TEM, CITY

APPROVED AS TO LEGAL SUFFICIENCY BY:
Justin R. Vaske, Assistant City Attorney

*1% for Art: No

1/9/11/1

and Reagan Equipment Co., Inc. for the repair of two Waukesha Generators at the Howard F. Curren AWT Plant in the estimated amount of \$59,485.22 for a cumulative total of \$143,962.79 for use by the Wastewater Department/AWT Plant; providing an effective date.

COMMITTEE REPORTS/CONSENT AGENDA CONTINUED – (ITEMS 2 THROUGH 37):

21. File No. X2011-968 – RESOLUTION NO. 2011-88

Resolution approving the renewal of an award between the City of Tampa and H & H Liquid Sludge Disposal, Inc. for the provision of dewatered wastewater residuals transportation and land application services for HFC AWT Plant in the estimated amount of \$720,000 for use by the Wastewater Department/AWT Plant; providing an effective date.

22. File No. Y2007-33 – RESOLUTION NO. 2011-89

Resolution authorizing Amendment No. 21 by Task Order Nos. 45, 46, 47 and Change Order No. 8 pertaining to the agreement between the City of Tampa and CH2M Hill Constructors, Inc., in the amount of \$8,501,416 for certain design-build services relating to Contract 6-C-73, Utility Capital Improvements Project; authorizing the Mayor to execute said amendment on behalf of the City of Tampa; providing an effective date.

23. File No. Y2008-30 – RESOLUTION NO. 2011-90

Resolution authorizing Contract Change Order No. 1-Final deducting \$15,745.11 and payment in the amount of \$600 to the contract between the City of Tampa and Florida Service Painting, Inc. dba Service Painting of Florida for Contract 08-C-00022, construction of Howard F. Curren AWTP Main Pumping Station Wet Well Rehabilitation; providing an effective date.

24. File No. Y2009-12 - (Part 1 of 2 - See Item 25) – RESOLUTION NO. 2011-91

Resolution authorizing Change Order No. 1-Final to Contract 08-C-00035; Morrison Avenue Pump Station Rehabilitation between the City of Tampa and Mechanical Industrial Services, Inc. an increase of \$4,234.26, and payment in the amount of \$4,834.26; providing an effective date.

25. File No. B2011-2 - (Part 2 of 2 - See Item 26) – RESOLUTION NO. 2011-92

Resolution making certain changes in the budget of the City of Tampa for the fiscal year ending September 30, 2011; approving the transfer, reallocation and/or appropriation of \$4,234.26 within the Wastewater State Loan Fund for the Morrison Avenue Pump Station Rehabilitation, Change Order No. 1-Final; providing an effective date.

26. File No. Y2011-6 – RESOLUTION NO. 2011- 93

Resolution approving an agreement between the City of Tampa and Greeley and Hansen LLC for engineering services in connection with Contract 11-D-00012; - Design Agreement for Ybor Pumping Station Rehabilitation; authorizing the Mayor to execute the agreement; providing for the funding thereof; and providing an effective date.

Finance Committee – (Items 27 through 29)

Mary Mulhern, Chair

Joseph Caetano, Vice-Chair, and Curtis Stokes, Alternate

26. File No. Y2011-6 – RESOLUTION NO. 2011-93

Resolution approving an agreement between the City of Tampa and Greeley and Hansen LLC for engineering services in connection with Contract 11-D-00012; - Design Agreement for Ybor Pumping Station Rehabilitation; authorizing the Mayor to execute the agreement; providing for the funding thereof; and providing an effective date.

EXHIBIT A

SCOPE OF SERVICES

City of Tampa, Florida
Wastewater Department

YBOR PUMPING STATION REHABILITATION

Greeley and Hansen LLC

PROJECT

The PROJECT shall comprise the phases defined herein, which are required to plan, design and construct the Ybor Pumping Station Rehabilitation. The CONSULTANT shall perform the necessary tasks within the following phases:

- Project Management
- Scoping Memo
- Design Engineering
- Bid Services
- Construction Services

The CITY's Ybor Pumping Station is one of the main pumping stations owned and operated by the Wastewater Department. The pumping station is located 1302 North 25th Street and has three 800-hp pumps and one 300-hp pump. It is essential that the function of this pumping station be maintained throughout the rehabilitation process.

The PROJECT will be delivered in a conventional design/bid/build approach, where the CONSULTANT, under this AGREEMENT, shall prepare design plans and technical specifications, which will be referred to as the "Bid Documents". These Bid Documents will be used by the CITY to solicit bids from licensed construction contractors. The CITY will select the appropriate bidder and enter into a construction contract for the work on the Ybor Pumping Station Rehabilitation. The PROJECT does not include any services by the CONSULTANT to pre-qualify contractors or to pre-purchase equipment for the PROJECT. Should the CITY solicit the services of the CONSULTANT to assist in pre-qualification of contractors or to pre-purchase equipment, these services shall be considered additional and additional compensation shall be negotiated.

The CITY's goal is to issue a notice to proceed to the selected contractor by October 1, 2011. To meet this goal, the intent is to advertize the PROJECT by June 17, 2011. The CONSULTANT shall schedule deliverables to the CITY as follows, based on City Council approval of this Scope of Services by February 3, 2011:

- Provide 30 percent Bid Documents to the CITY for review by March 25, 2011.
- Provide 90 percent Bid Documents to the CITY for review by May 6, 2011.
- Provide final Bid Documents by June 2, 2011.

The CITY shall provide review comments to the CONSULTANT within 10 calendar days of the submittal of partial Bid Documents.

A PROJECT schedule is included on Figure A-1, attached hereto. The CONSULTANT will perform bid and construction services within the period shown on this schedule. The schedule during the bid and construction phases will be controlled by the CITY and its selected contractor, but is expected to be performed within the period shown on Figure A-1.

The CONSULTANT's Scope of Services shall include project management and the following four phases:

PROJECT MANAGEMENT

The CONSULTANT shall manage each phase of the project by maintaining a PROJECT schedule and budget, reporting progress to the CITY, and providing invoices in a timely manner. This phase will be active throughout the PROJECT.

SCOPING MEMO

The CONSULTANT shall prepare a scoping memo describing the recommended design features for review by and approval of the CITY. The CONSULTANT shall review material provided by the CITY to develop the memo, as well as general observations of the facility. The CONSULTANT shall visit the site one time during the scoping memo phase. The CONSULTANT shall modify and resubmit the scoping memo in accordance with review comments from the CITY. The CONSULTANT shall meet with CITY representatives one time during the scoping memo phase.

DESIGN SERVICES

The CONSULTANT shall prepare the Bid Documents for the PROJECT, consisting of all mechanical, electrical, and ventilation design. It is not anticipated that it will be necessary to make architectural, structural, or air conditioning modifications to the facilities. The CONSULTANT shall prepare the following as part of the design services:

- Workmanship and Materials section of the Specifications for the materials, equipment, and systems necessary for the rehabilitation. The CONSULTANT shall use existing Workmanship and Materials sections developed by the City to the extent possible. Where necessary to add

sections not available from the CITY, the CONSULTANT shall develop additional specifications using the CSI format.

- The Specific Provisions in the CITY's standard format, including the limitations on the sequence of construction.
- The Plans.

It is anticipated that the rehabilitation design will consist of the following major elements:

1. Remove all 800-hp pumps.
2. Install two 400-hp (600-rpm) pumps, including 480-volt VFDs. (One existing pump location will remain empty.
3. Modify Pump No. 4 to operate at 480 volts with a new VFD. Modify the pump motor to operate at 480 volts from its present 4160 volts. Evaluate whether or not the speed can also be increased to 600 rpm and the horsepower to 400.
4. Replace all 36-inch discharge valves and the actuators (hydraulic or pneumatic, as directed by the CITY).
5. Remove existing 4160V switchgear and provide new 480V switchgear. Configure the new switchgear in a main-tie-main configuration.
6. Replace the 480-volt motor control center.
7. Provide an automatic transfer control using Schweitzer relay SEL-751A.
8. Replace the existing bubbler system with a new bubbler system.
9. Remove the existing sluice gates in the wet well and install knife gate valves at the base of Pumps No. 1, 2, and 3, similar to what exists at Pump No. 4.
10. Replace roof exhaust fans and louvers on the east and west sides of the building.
11. Replace the compressed air system, including compressors and piping. The new system will either be sized for service to the new pneumatic actuators, if used, or largely to serve the bubbler system.
12. Remove the existing enclosure and all internal electrical and HVAC equipment now located above Pump No. 4.
13. Replace bar screens.
14. Coordinate with TECO.
15. Replace pump control system.
16. Design electrical improvements to accommodate a possible future engine generator and include the capability of connecting a portable generator to provide power.
17. Replace existing sump pump and discharge valve.
18. Replace seal water system, if seal water continues to be used. Evaluate the use of pump seals not requiring seal water.
19. Repaint all pumps and piping.
20. Provide a "hot tap" into the 72-inch force main for the purpose of bypass pumping. The hot tap shall be designed to be permanent to allow future bypassing.

The following plan sheets are anticipated:

| Sheet | | |
|-------|------------|---|
| No. | Discipline | Sheet Name |
| 1 | | Cover Sheet and Index |
| 2 | G | Site Plan & Hot Tap Detail |
| 3 | M | Demolition - El. 12 |
| 4 | M | Demolition - Sectional Plan |
| 5 | M | Demolition - El. -15 |
| 6 | M | Demolition - Section |
| 7 | M | Plan El. 12 |
| 8 | M | Sectional Plan |
| 9 | M | Plan El. -15 |
| 10 | M | Section and Details |
| 11 | M | Diagrams and Details |
| 12 | M | Vanishing Plan |
| 13 | M | Vanishing Section |
| 15 | E | Legend |
| 16 | E | Site Plan |
| 17 | E | Existing and New Overall One Line Diagram |
| 18 | E | 480-Volt Main Switchgear - Control Diagrams & Details |
| 19 | E | Pump and VFD Control Diagrams |
| 20 | E | Electrical Power Plans |
| 21 | E | Electrical Lighting and Misc System Plans |
| 22 | E | Conduit and Cable Schedule |
| 23 | E | Panelboard Schedule |
| 24 | E | Misc |

It is not anticipated that new, exterior structures will be required for the PROJECT and no scope or budget has been included for structural engineering or for architectural services.

The design shall be based on the following equipment manufacturers that have been standardized by the CITY:

- Pumps: Fairbanks Morse
- 480-Volt VFDs: Yaskawa
- Automatic Transfer Relay: Schweitzer
- Plug Valves: DeZurick

The CONSULTANT will convert appropriate portions of the existing record drawings and other information to AutoCAD® Plans. Scanning of existing plans shall be used, as appropriate, for backgrounds. Deliverables under this task shall consist of the following:

- 30% Design: The CONSULTANT shall submit paper copy of the draft Plans for the project and an outline of the technical specifications. Plans shall be prepared full size at 11" x 17".

- **70% Design Specifications:** The CONSULTANT shall submit all draft technical specifications anticipated to be needed for the PROJECT, including the draft limitations on the sequence of construction. No draft Plans will be included with this submittal.
- **90% Design:** The CONSULTANT shall submit draft Plans and technical specifications, including the Specific Provisions. The 90% submittal shall also include an updated estimate of PROJECT construction costs.
- **Bid Documents:** The CONSULTANT shall submit the final Bid Documents ready for advertizing the PROJECT to prospective bidders.

Paper copies and electronic copies in pdf format shall be provided for all of the above submittals.

No cost estimates are included in this scope of services.

BID SERVICES

The CITY shall advertize the PROJECT, distribute plans to bidders, and receive questions from prospective bidders. The CONSULTANT shall assist the CITY during the bid period by attendance at the pre-bid meeting, answering questions, preparing any necessary addenda for distribution by the CITY, and evaluation of the apparent low bidder. The CONSULTANT shall prepare a bid evaluation report that shall be submitted within five working days of the receipt of bids. Following the selection and approval of the PROJECT contractor, the CONSULTANT shall conform the Bid Documents to include all changes made by addendum.

CONSTRUCTION SERVICES

The CONSULTANT shall perform the following services during construction:

1. Pre-Construction Conference

The CONSULTANT shall attend and participate in a Pre-Construction Conference. The agenda for the conference will be prepared by the CITY. The CONSULTANT shall distribute copies of a written summary to all attendees within one week of the meeting date.

2. Shop Drawing Review

The CONSULTANT shall receive and review required CONTRACTOR submittals. The CONSULTANT's review shall be for conformance with the design concept and contract requirements. The CONSULTANT shall prepare and maintain an electronic log of submittals to include submittal number, subject, date received, reviewer, action taken and date returned. Such reviews or other action shall not extend to means, methods, techniques, sequences, or procedures of construction or safety program of the CONTRACTOR. If during the shop drawing process, the CONTRACTOR

requests substitute materials and/or equipment, the CONSULTANT shall provide a recommendation on the submittal to the CITY's Project Manager. The Contract Documents shall limit the number of re-submittals for a particular submitted item to one re-submittal. If additional re-submittals are required, the cost of the CONSULTANT's review services shall be paid by the CITY and may be deducted from the contract amount due the CONTRACTOR.

3. Schedule Review

The CONSULTANT shall review and make recommendations to the CITY on the acceptability of the CONTRACTOR's initial construction schedule. The CONTRACTOR will be required to update the schedule on a monthly basis. The CONSULTANT shall provide the City with monthly review comments on the CONTRACTOR's schedule. Should the CONTRACTOR's schedule show that progress completion has been delayed to beyond the contract date, the CONSULTANT shall request that the CONTRACTOR revise the schedule and take action to return the schedule completion to the contract date.

4. Respond to CONTRACTOR Requests for Information

The CONSULTANT shall receive and respond to CONTRACTOR Requests for Information or Requests for Clarification of the Contract Documents or design intent. The CONSULTANT shall be responsible for reviewing and responding to up to two Requests for Information per design drawing. The CONSULTANT shall provide clarification on the technical specifications and the Plans. The CITY shall provide clarification on questions regarding the front end documents (bid documents, agreement, and general conditions, etc.). The CONSULTANT shall interpret the meaning of the Contract Documents. The CONSULTANT shall also prepare and maintain a log of all such received requests, noting the date received, subject, resolution and date response was returned to the CONTRACTOR. All such reviews and replies shall be in writing and shall be conducted expeditiously.

5. Change Order Review

The CONSULTANT shall perform the following tasks, if the CITY requests changes to the contract documents:

- a. The CONSULTANT shall consult with the CITY regarding proposed changes to the Contract Documents, when such revisions are required due to CITY request, design conflicts or unanticipated site conditions are encountered.
- b. The CONSULTANT shall prepare sketches, as required, to resolve differing conditions encountered. The CONSULTANT shall transmit to the CONTRACTOR written clarification and interpretations of the drawings and specifications not affecting time and/or contract price. If required, the CONSULTANT shall furnish within a reasonable time, in

writing, additional instructions by means of drawings or otherwise as required for the proper execution of the work.

- c. The CONSULTANT shall evaluate actual field conditions as reported by the CONTRACTOR. The CONSULTANT's evaluation shall seek to establish whether a change in the work is required to accommodate existing conditions. The CONSULTANT shall make recommendations to the City in writing at the conclusion of the evaluation.
 - d. For estimation purposes it is anticipated that the CONSULTANT will respond to not more than three change order proposals due to CITY requested modifications.
 - e. The CONSULTANT shall assist the City in negotiations with the CONTRACTOR regarding the scope and cost of any necessary contract changes. The CONSULTANT shall advise the City if cost and time estimates as submitted by the CONTRACTOR are fair and reasonable.
6. **Construction Site Visits**

The CONSULTANT shall make visits and on-site observations, at intervals appropriate to the various construction stages of the work in progress. Such site visits shall review materials and equipment being used to determine if work is proceeding in accordance with the Contract Documents and to provide further protection for City against defects and deficiencies in the CONTRACTOR's work. The CONSULTANT shall make up to 12 site visits during the course of construction.

7. **Equipment O&M Manuals**

The CONSULTANT shall coordinate and review equipment O&M manuals that will be required to be submitted by each vendor through the CONTRACTOR. For any equipment to be started up, such manuals shall be submitted to the CITY 15 calendar days in advance. O&M manuals will be submitted in the format specified in the Contract Documents.

8. **Pre-Final and Final Inspection**

The CONSULTANT shall conduct a site inspection to determine if the PROJECT is substantially completed, followed by a final inspection to determine if the work has been completed in accordance with the Contract Documents. The Pre-Final Inspection shall be subsequent to the CONTRACTOR's preparation of a tentative list of items to complete. The CONSULTANT shall modify the list accordingly pending the results of the Pre-Final Inspection. Subsequent to the completion of all items on the list, the CONSULTANT shall complete the final inspection. Subsequent to an acceptable final inspection, the CONSULTANT shall recommend, in writing,

final payment to the CONTRACTOR and give written notice to the City and CONTRACTOR that the work is acceptable subject to any expressed conditions.

9. **Record Drawings**

The CONSULTANT shall prepare final record drawings from the based on CONTRACTOR supplied as-built drawings. The CONSULTANT shall submit record drawings to the City as one PDF set and one signed and sealed set.

COMPENSATION

Compensation shall be in accordance with the budget per phase shown in Exhibit B. Partial payments for Phases 1 (Project Management), 2 (Scoping Memo), and 3 (Design Services) shall be made on a monthly basis as a percentage of the total lump sum budget by task for services provided to date.

Partial payments for Phases 4 (Bid Services) and 5 (Construction Services) shall be based on labor hours times the direct labor rate with the multiplier shown in Exhibit B, up to, but not to exceed, the budget shown for each phase. For Phases 4 and 5, direct costs shall be billed at the actual cost with no markup and subconsultants shall be billed at their cost plus 10 percent.

The budget for Additional Services is a contingent item that will only be used as authorized by the City in writing. Additional services, if any, shall be negotiated based on labor hours times the direct labor rates at the multiplier shown in Exhibit B.

FIGURE A-1

YBOR PUMPING STATION REHABILITATION SCHEDULE

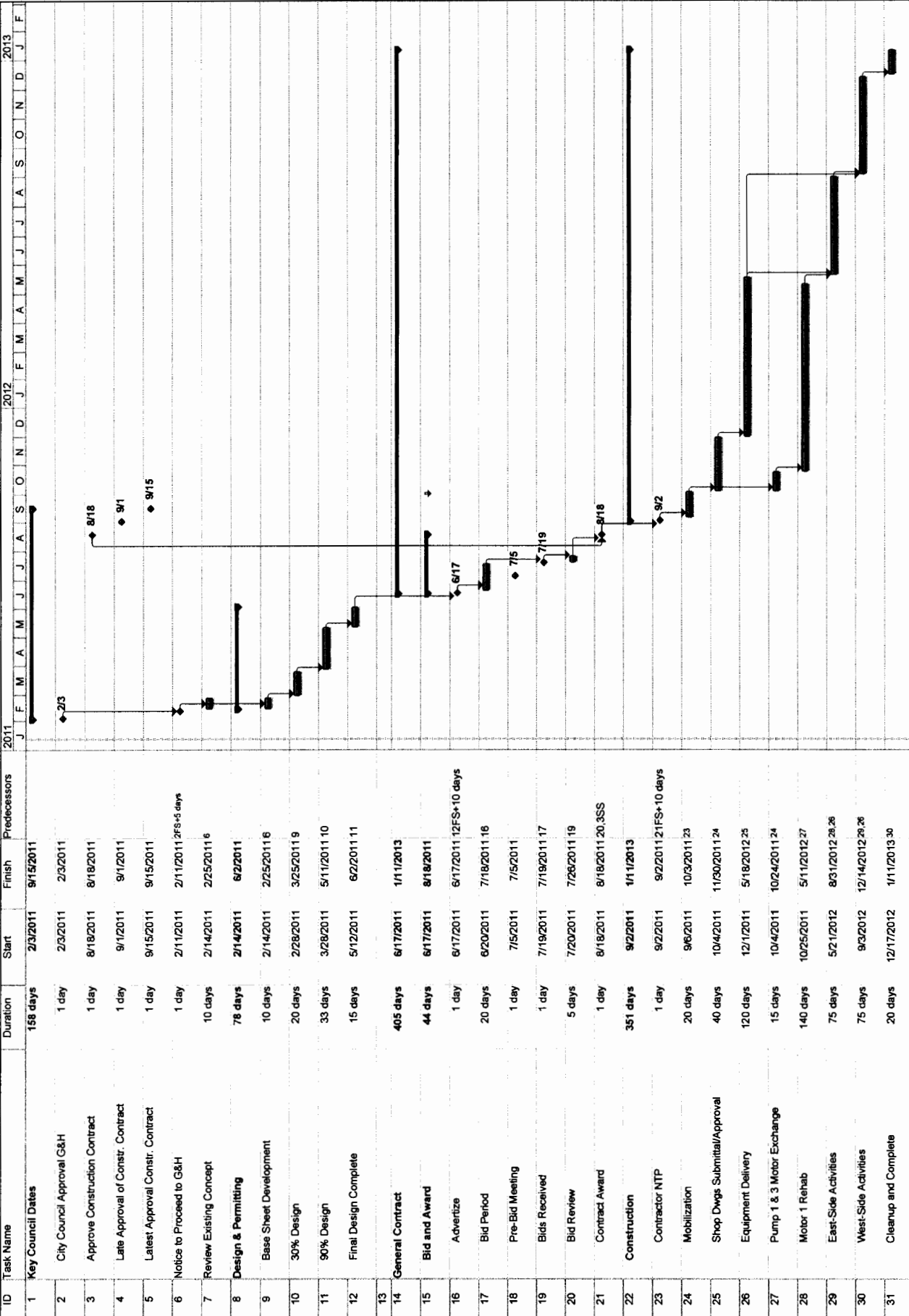


EXHIBIT B
ENGINEERING BUDGET
CITY OF TAMPA, FLORIDA
WASTEWATER DEPARTMENT
YBOR PUMPING STATION REHABILITATION
Greeley and Hansen LLC
January 2011

| No. | Phase Description | Project Manager | Associate | Head Elec. Engineer | Sr. Elec. Engineer | Sr. Prof. Engineer | Professional Engineer | Senior Drafter | Drafter | Construction Engineer | Admin. Asst. | Totals | Proposed Fees (\$) | | | Notes |
|-------------------------------------|-------------------------------------|-----------------|-----------|---------------------|--------------------|--------------------|-----------------------|----------------|---------|-----------------------|--------------|--------|--------------------|------------------|-----------|---|
| | | | | | | | | | | | | | Fee for Labor | Other Direct Fee | Total Fee | |
| 1.0 | Project Management | | | | | | | | | | | | | | | |
| 1.1 | PM Activities | 26 | 0 | 0 | 0 | 0 | 0 | 0 | 0 | 0 | 0 | 26 | \$5,989 | \$0 | \$5,989 | From Feb. 2011 through Jan. 2012 |
| Subtotal Phase 1 | | 26 | 0 | 0 | 0 | 0 | 0 | 0 | 0 | 0 | 0 | 26 | \$5,989 | \$0 | \$5,989 | |
| 2.0 | Scoping Memo | | | | | | | | | | | | | | | |
| 2.1 | Scoping Memo | 9 | 0 | 4 | 0 | 4 | 0 | 0 | 0 | 0 | 0 | 20 | \$1,913 | \$20 | \$1,933 | Summary of Evaluations |
| 2.2 | Scoping Memo | 12 | 0 | 8 | 0 | 4 | 0 | 0 | 0 | 0 | 0 | 28 | \$3,959 | \$200 | \$4,159 | Meet once to discuss recommendations |
| Subtotal Phase 2 | | 21 | 0 | 12 | 0 | 8 | 0 | 0 | 0 | 0 | 0 | 28 | \$5,872 | \$220 | \$6,092 | |
| 3.0 | Design Services | | | | | | | | | | | | | | | |
| 3.1 | Plan, Pin and Bypassing | 5 | 8 | 0 | 0 | 16 | 9 | 20 | 12 | 0 | 0 | 70 | \$9,012 | | \$9,012 | Site plan, bypassing and hot tap. |
| 3.1.1 | Demolition Sheets | 4 | 0 | 0 | 0 | 16 | 16 | 16 | 16 | 0 | 0 | 68 | \$7,762 | | \$7,762 | For 4 demolition sheets. |
| 3.1.2 | Mechanical Sheets | 26 | 0 | 0 | 0 | 64 | 104 | 60 | 76 | 0 | 0 | 330 | \$37,951 | | \$37,951 | For 5 mechanical sheets. |
| 3.1.3 | Ventilation Sheets | 2 | 0 | 0 | 0 | 2 | 2 | 2 | 2 | 0 | 0 | 4 | \$599 | \$4,070 | \$4,669 | For 2 ventilation sheets and lower modifcplace. |
| 3.1.4 | Instrumentation Sheets | 2 | 8 | 0 | 0 | 8 | 8 | 0 | 16 | 0 | 0 | 42 | \$5,418 | | \$5,418 | For bubbler system. |
| 3.1.5 | Electrical Sheets | 0 | 0 | 0 | 90 | 231 | 0 | 0 | 117 | 0 | 0 | 438 | \$56,142 | | \$56,142 | For 10 electrical sheets |
| 3.1.6 | General Specifications | 4 | 0 | 0 | 0 | 4 | 4 | 0 | 0 | 0 | 0 | 12 | \$1,827 | | \$1,827 | |
| 3.1.7 | Mechanical Specifications | 5 | 0 | 0 | 0 | 8 | 12 | 0 | 0 | 0 | 0 | 28 | \$4,070 | | \$4,070 | |
| 3.1.8 | Electrical Specifications | 0 | 0 | 0 | 7 | 31 | 0 | 0 | 0 | 0 | 0 | 38 | \$5,399 | | \$5,399 | |
| 3.1.9 | Structural Specifications | 4 | 0 | 0 | 0 | 8 | 0 | 0 | 0 | 0 | 0 | 12 | \$1,986 | | \$1,986 | |
| 3.2 | Sequences of Construction | 8 | 0 | 0 | 0 | 8 | 0 | 0 | 0 | 0 | 0 | 8 | \$1,714 | \$800 | \$2,514 | Finalize sequences developed in Phase 2. |
| 3.3 | Design Meetings | 65 | 18 | 0 | 97 | 390 | 153 | 96 | 239 | 0 | 0 | 1,058 | \$133,264 | \$4,870 | \$138,134 | Meet once to discuss 30% design. |
| Subtotal Phase 3 | | 65 | 18 | 0 | 97 | 390 | 153 | 96 | 239 | 0 | 0 | 1,058 | \$133,264 | \$4,870 | \$138,134 | |
| 4.0 | Bid Services | | | | | | | | | | | | | | | |
| 4.1 | Pre-Bid Conference | 4 | 0 | 0 | 0 | 0 | 0 | 0 | 0 | 0 | 0 | 4 | \$857 | | \$857 | |
| 4.2 | Answer Questions & Addenda | 8 | 0 | 0 | 8 | 31 | 0 | 0 | 8 | 0 | 1 | 56 | \$8,020 | | \$8,020 | |
| 4.3 | Bid Evaluation | 2 | 0 | 0 | 0 | 12 | 0 | 0 | 0 | 0 | 0 | 15 | \$2,161 | | \$2,161 | |
| Subtotal Phase 4 | | 14 | 0 | 0 | 8 | 43 | 0 | 0 | 8 | 0 | 2 | 75 | \$11,038 | \$0 | \$11,038 | |
| 5.0 | Construction Services | | | | | | | | | | | | | | | |
| 5.1 | Pre-Construction Conference | 4 | 0 | 0 | 0 | 0 | 0 | 0 | 0 | 0 | 0 | 4 | \$3,213 | \$500 | \$3,713 | Attend one meeting. |
| 5.2 | Shop Drawing Review | 6 | 6 | 0 | 0 | 20 | 48 | 0 | 0 | 16 | 0 | 68 | \$13,085 | | \$13,085 | |
| 5.3 | Mechanical Review | 0 | 0 | 0 | 0 | 0 | 0 | 0 | 0 | 2 | 0 | 2 | \$347 | \$550 | \$897 | |
| 5.4 | Electrical Review | 0 | 0 | 0 | 0 | 4 | 4 | 0 | 0 | 4 | 0 | 12 | \$1,663 | | \$1,663 | |
| 5.5 | Instrumentation Review | 0 | 0 | 0 | 0 | 115 | 0 | 0 | 0 | 8 | 0 | 177 | \$26,233 | | \$26,233 | |
| 5.6 | Schedule Review | 0 | 0 | 0 | 0 | 0 | 0 | 0 | 0 | 4 | 0 | 4 | \$693 | | \$693 | |
| 5.7 | Respond to Requests for Information | 8 | 0 | 0 | 0 | 12 | 12 | 0 | 0 | 20 | 0 | 52 | \$6,069 | | \$6,069 | |
| 5.8 | Change Order Review | 4 | 0 | 0 | 0 | 12 | 0 | 0 | 0 | 0 | 0 | 16 | \$2,520 | | \$2,520 | |
| 5.9 | Construction Site Visits | 8 | 0 | 0 | 0 | 0 | 0 | 0 | 0 | 40 | 0 | 48 | \$6,644 | \$150 | \$6,794 | Ten 4-hour visits + two for PM. |
| 5.10 | Review Equipment O&M Manuals | 2 | 0 | 0 | 0 | 4 | 12 | 0 | 0 | 0 | 0 | 18 | \$2,790 | | \$2,790 | |
| 5.11 | Mechanical Review | 4 | 0 | 0 | 0 | 0 | 0 | 0 | 0 | 0 | 0 | 4 | \$600 | | \$600 | |
| 5.12 | Electrical Review | 4 | 0 | 0 | 0 | 0 | 0 | 0 | 0 | 0 | 0 | 4 | \$1,380 | | \$1,380 | |
| 5.13 | Permit and Final Inspection | 4 | 0 | 0 | 0 | 0 | 0 | 0 | 32 | 4 | 0 | 40 | \$4,271 | | \$4,271 | |
| 5.14 | Final Meetings | 35 | 6 | 16 | 46 | 167 | 75 | 0 | 32 | 110 | 0 | 489 | \$72,374 | | \$72,374 | |
| Subtotal Phase 5 | | 35 | 6 | 16 | 46 | 167 | 75 | 0 | 32 | 110 | 0 | 489 | \$72,374 | | \$72,374 | |
| TOTAL AUTHORIZED UPPER LIMIT | | 153 | 24 | 24 | 151 | 604 | 233 | 96 | 279 | 110 | 2 | 1,678 | \$227,449 | \$8,790 | \$236,239 | |
| ADDITIONAL SERVICES | | | | | | | | | | | | | | | | |
| TOTAL UPPER LIMIT | | | | | | | | | | | | | | | | \$ 11,812 |

Reference: 1. Local Travel
2. Other Travel
3. Sanchez + 10%

Billing Rates \$ 214 \$ 211 \$ 214 \$ 208 \$ 156 \$ 138 \$ 104 \$ 104 \$ 85 \$ 173 \$ 68
Direct Labor Rate \$ 66 \$ 67 \$ 66 \$ 66 \$ 50 \$ 44 \$ 33 \$ 33 \$ 27 \$ 55 \$ 22
Multiplier 3.15

