

The Enclosed Document Is Provided For Your Convenience.

Contact for ALL Questions:

[MailTo:ContractAdministration@TampaGov.net](mailto:ContractAdministration@TampaGov.net)

Visit the City of Tampa Construction Project Bidding Page At:

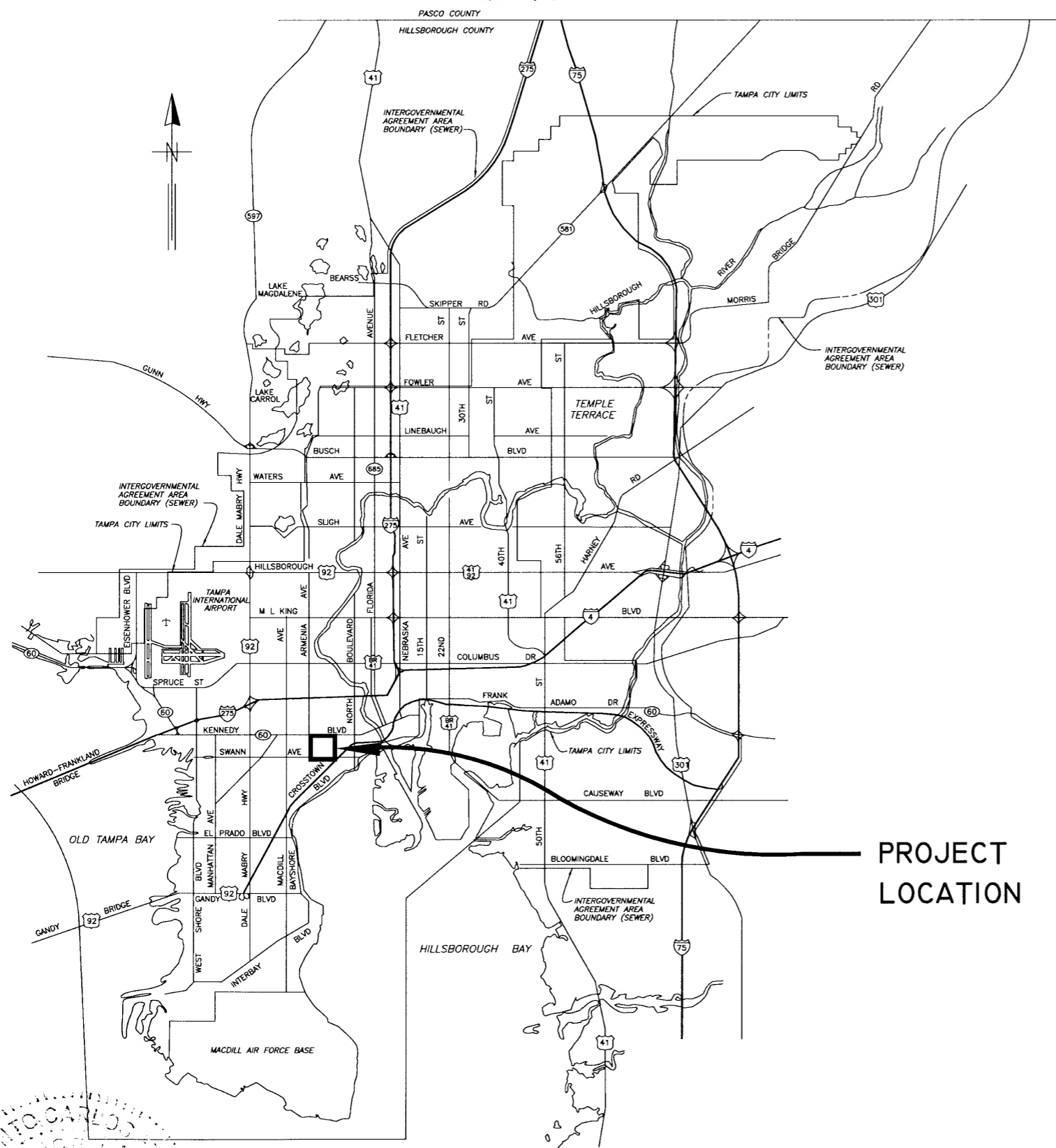
http://www.tampagov.net/dept_contract_administration/programs_and_services/construction_project_bidding/index.asp

To be listed as a Plan Holder on that page, email the above address.

City of Tampa
Contract Administration Department
306 E. Jackson St. #280A4N
Tampa, FL 33602
(813)274-8456, fax 274-8080

B071-149

LOCATION MAP



PROJECT
LOCATION

CITY of TAMPA



WASTEWATER DEPARTMENT

PLANS FOR

HORATIO ST. SEWER REPLACEMENT:
FROM ALLEY EAST OF
HOWARD AVE. TO FREMONT AVE.

CONTRACT NO. 12-C-00005

1=1

C:\2000\DWG\PIPE\5336-1



JACINTO, CARLOS FERRAS, P.E. #9454
DESIGN DIVISION HEAD
WASTEWATER DEPARTMENT

No.	DATE	REVISIONS
3		
2		
1		

DES: J.P.W.
DRN: W.A.
CKD: JF
DATE: 11/23/11

CITY of TAMPA
WASTEWATER DEPARTMENT

COVER SHEET

W.O. 5336
SHEET
1
OF 10

LEGEND

<u>EX SEWERS</u>	UP to 36" & SMALLER	36" & LARGER
EX FORCE MAIN		
EX SAN SEWER & MANHOLES		
EX STORM SEWER & MANHOLES		
<u>PROP SEWERS</u>		
PROP FORCE MAIN		
PROP SANITARY SEWER & MANHOLES		
PROP STORM SEWER & MANHOLES		
<u>OTHER FEATURES</u>		
RIGHT of WAY LINE		
EDGE of PAVEMENT		
WATER LINE		
GAS LINE		
ELECTRICAL CABLE or DUCT		
TELEPHONE CABLE or DUCT		
TV CABLE		
VALVE		
HYDRANT		
CATCH BASIN, GRATE		
POWER POLE		
TELEPHONE POLE		
GUY POLE		
GUY WIRE		
VALVE VAULT		
WATER METER		
ELECTRICAL MANHOLE or VAULT		
TELEPHONE MANHOLE or VAULT		
TRAFFIC BOX or VAULT		
BUILDING LIMIT		
PROPERTY OWNERSHIP		
FENCE		
CONIFER		
PALM		
OAK		
OTHER		
SHRUB		
HEDGE		
RAILROAD TRACKS		
IRON PIPE		
CONCRETE MONUMENT		
OPEN DITCHES		
EXISTING WYE		
PROPOSED WYE		
CLEAN OUT		

ABBREVIATIONS

TOP of PIPE	TP	DUCTILE IRON PIPE	DIP
INVERT ELEVATION	IE or INV EL	REINFORCED CONCRETE PIPE	RCP
RIGHT of WAY	R/W	CONCRETE PIPE	CP
MANHOLE	MH or MH	APPROXIMATE LOCATION	AL
POLYVINYL CHLORIDE PIPE	PVCP	BENCH MARK	BM
VITRIFIED CLAY PIPE	VCP	POINT of INTERSECTION	PI
ADVANCED DRAINAGE SYSTEM	ADS		

INDEX

No.	DESCRIPTION	FROM	TO
1	COVER SHEET		
2	LEGEND, PROJECT MAP & INDEX		
3	GENERAL NOTES		
4	HORATIO ST. (PLAN & PROFILE)	ALLEY E. OF HOWARD AVE.	E. OF ALBANY
5	HORATIO ST. (PLAN & PROFILE)	E. OF ALBANY AVE.	FREMONT AVE.
6	MISC. DETAILS		
7	MANHOLE DETAILS		
8	HOUSE CONNECTION DETAILS		
9	CLEANOUT COVER DETAILS		
10	PAVEMENT RESTORATION DETAILS		



PROJECT MAP

C:\2000\DWG\PIPE\5336-2

1=40

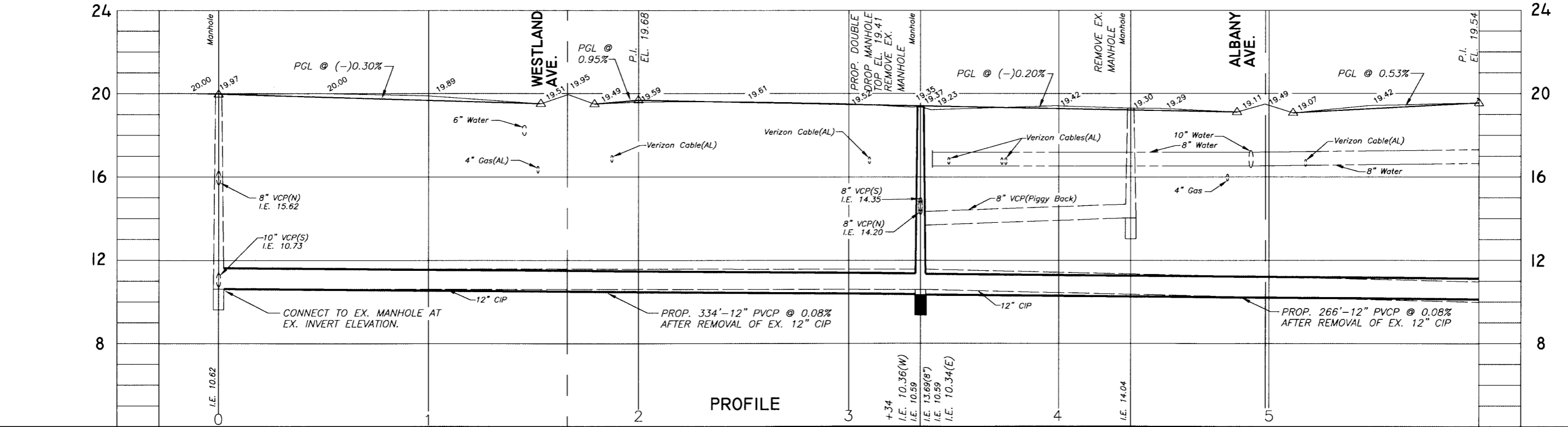
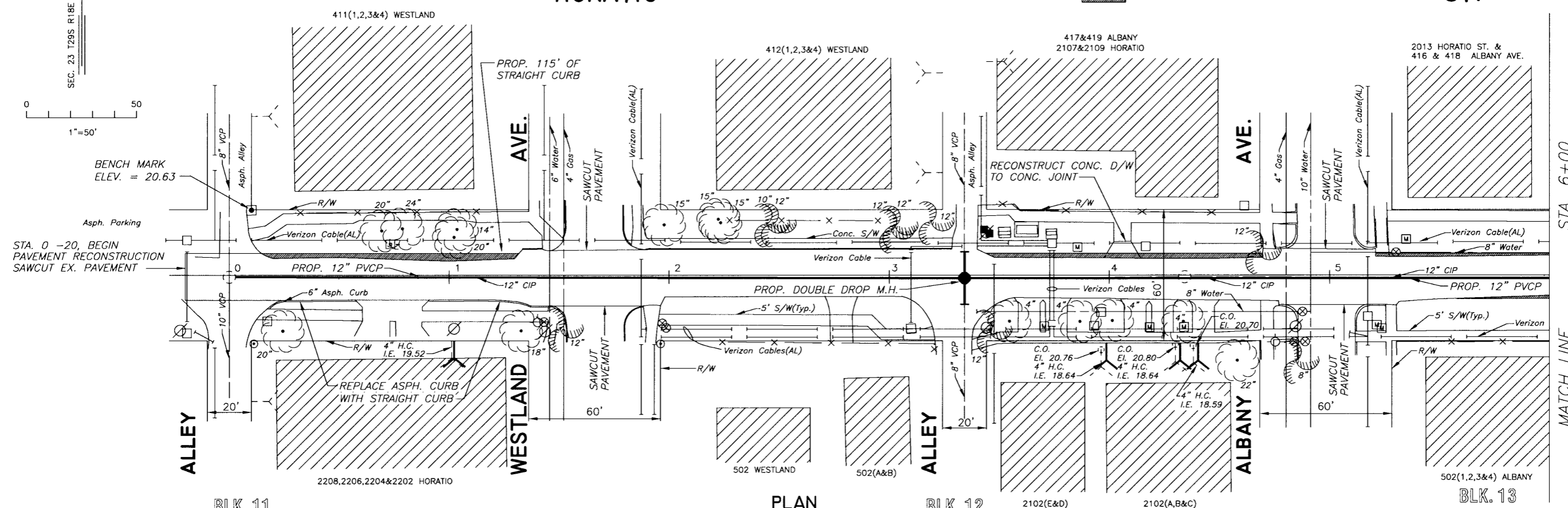
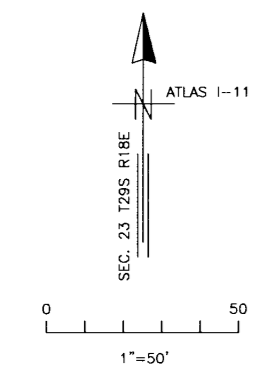
JACINTO CARLOS FERRAS, P.E. #49454 DESIGN DIVISION HEAD WASTEWATER DEPARTMENT	No.	DATE	REVISIONS	DES: J.P.W. DRN: W.A. CKD: JF DATE: 11/23/11	CITY of TAMPA WASTEWATER DEPARTMENT	LEGEND, PROJECT MAP & INDEX	W.O. 5336
	6						SHEET
	5						2
	4						OF 10

GENERAL NOTES

1. ELEVATION INFORMATION SHOWN ON THESE PLANS IS REFERENCED TO NGVD1929 UNLESS OTHERWISE STATED.
2. BENCH MARKS ARE LOCATED AT STATION 0+10.23, 30.51' LT. AND STATION 9+99.19, 29.74' RT.
3. LOCATIONS OF EXISTING UNDERGROUND UTILITIES WERE PREPARED FROM THE MOST RELIABLE INFORMATION AVAILABLE. VERIFY THE LOCATION AND DEPTH OF ALL PERTINENT UTILITIES PRIOR TO CONSTRUCTION. NOTIFY UTILITY COMPANIES AT LEAST 48 HOURS BEFORE BEGINNING CONSTRUCTION.
4. HOUSE CONNECTION LOCATIONS ARE APPROXIMATE ONLY. REQUIRED LOCATION AND DEPTH WILL BE DISCOVERED BY EXCAVATION DURING CONSTRUCTION.
5. WHERE THE EXISTING SEWER IS TO BE REMOVED AND REPLACED WITH A NEW SEWER, CONTINUOUS SEWER SERVICE MUST BE MAINTAINED AT ALL TIMES, INCLUDING WHILE CONNECTING THE LATERALS TO THE NEW SEWER IN PLACE.
6. THE NORTH AND SOUTH, 8-INCH VCP SEWERS, CONNECTING TO THE MANHOLES AT STATIONS 3+34, 6+65 AND 9+94, SHALL BE REPLACED WITH 8-INCH PVC SEWERS. THE LENGTH OF PVC REPLACEMENT SEWERS SHALL BE 12- FEET, HAVE THE SAME MANHOLE INVERT ELEVATION AS THE EXISTING SEWER, SHALL BE LAID AT THE SAME SLOPE AS THE EXISTING SEWER AND CONNECTED TO THE REMAINING VCP SEWER WITH A FLEXIBLE COUPLING WITH STAINLESS STEEL SHEAR RINGS.
7. THE MINIMUM CLEARANCE BETWEEN HOUSE LATERALS AND WATER LINES SHALL BE 6-INCHES UNDER ALL CIRCUMSTANCES. IF THE HOUSE LATERAL IS BELOW A WATER LINE AND HAS BETWEEN 6-INCH AND 18-INCH OF CLEARANCE, OR IF THE LATERAL IS ABOVE THE WATER LINE REGARDLESS OF CLEARANCE, THEN A NOMINAL 20-FOOT LENGTH OF GREEN AWWA CLASS 150, C900 PVC PIPE SHALL BE CENTERED OVER / UNDER THE WATER LINE.
8. THE CONTRACTOR SHALL RESTRICT HIS MAIN TRENCH WIDTH AS NECESSARY TO REMAIN WITHIN THE EDGES OF THE EXISTING ASPHALT PAVEMENT. ANY CURB, DRIVEWAY, SIDEWALK OR LANDSCAPING DAMAGED OR DESTROYED OUTSIDE THE MAIN TRENCH (OR WIDENED PAVEMENT) EXCEPT AS NOTED, SHALL BE REPAIRED BY THE CONTRACTOR WITH NO ADDITIONAL PAYMENT.
9. THE PAVEMENT SHALL BE RECONSTRUCTED TO THE EDGE OF THE EXISTING PAVEMENT, OR TO A DISTANCE OF 10- FEET FROM THE RIGHT-OF-WAY CENTERLINE WHICHEVER IS GREATER, EXCEPT THE NORTH BLOCK BETWEEN MELVILLE AVE. AND FREMONT AVE.
10. AT THE INTERSECTIONS WITH CROSS STREETS, THE EXISTING SOUTH TO NORTH GUTTER FLOWS OF THE INTERSECTING STREETS SHALL BE MAINTAINED ACROSS HORATIO STREET.
11. AT THE INTERSECTIONS WITH ALLEYS, THE CITY'S INSPECTOR WILL DETERMINE THE DISTANCE THE ALLEY MAY HAVE TO BE RECONSTRUCTED, 5' MAXIMUM.
12. WHERE THE PAVEMENT RECONSTRUCTION MEETS THE EXISTING PAVEMENT, SIDEWALK(S) OR DRIVEWAY(S), THE CONTRACTOR SHALL SAWCUT THE EXISTING PAVEMENT, SIDEWALK OR DRIVEWAY TO PROVIDE A NEAT, CLEAN JOINT.
13. WHERE THE PAVEMENT IS SLIGHTLY WIDENED, THE CITY'S INSPECTOR WILL DETERMINE THE ADDITIONAL DISTANCE THE EXISTING SIDEWALK AND DRIVEWAY MAY HAVE TO BE REPLACED IN ORDER TO PROVIDE THE DESIRABLE CONNECTION SLOPE BETWEEN THE RECONSTRUCTED PAVEMENT AND EXISTING SIDEWALK AND DRIVEWAY.
14. CONTRACTOR SHALL PROTECT ALL TREES IN THE VICINITY OF THE PROPOSED CONSTRUCTION IN ACCORDANCE WITH CHAPTER 13 OF THE CITY OF TAMPA CODE. NO TREES SHALL BE PRUNED WITHOUT PRIOR APPROVAL FROM THE CITY OF TAMPA PARKS & RECREATION DEPARTMENT, NATURAL RESOURCES DIVISION, AND SHALL BE COMPLETED BY A CERTIFIED ARBORIST. ROOT PRUNNING MAY BE REQUIRED AT CERTAIN LOCATIONS AND SHALL BE COMPLETED IN ACCORDANCE WITH CHAPTER 13 TECHNICAL MANUAL SPECIFICATIONS.
15. CONTRACTOR SHALL OBTAIN A RIGHT-OF-WAY CLOSURE PERMIT FROM THE CITY OF TAMPA RIGHT-OF-WAY DEPARTMENT.

1-1
C:/2000/DWG/PIPE/5336-3

JACINTO CARLOS FERRAS, P.E. #49454 DESIGN DIVISION HEAD WASTEWATER DEPARTMENT	No.	DATE	REVISIONS	DES: J.P.W.	CITY of TAMPA WASTEWATER DEPARTMENT	GENERAL NOTES	W.O. 5336
	3			DRN: W.A.			SHEET
	2			CKD: JF			3
	1			DATE: 11/28/11			OF 10



C:/2000/DWG/PIPE/5336-4

JACINTO CARLOS FERRAS, P.E. #49454
DESIGN DIVISION HEAD
WASTEWATER DEPARTMENT

No.	DATE	REVISIONS
3		
2		
1		

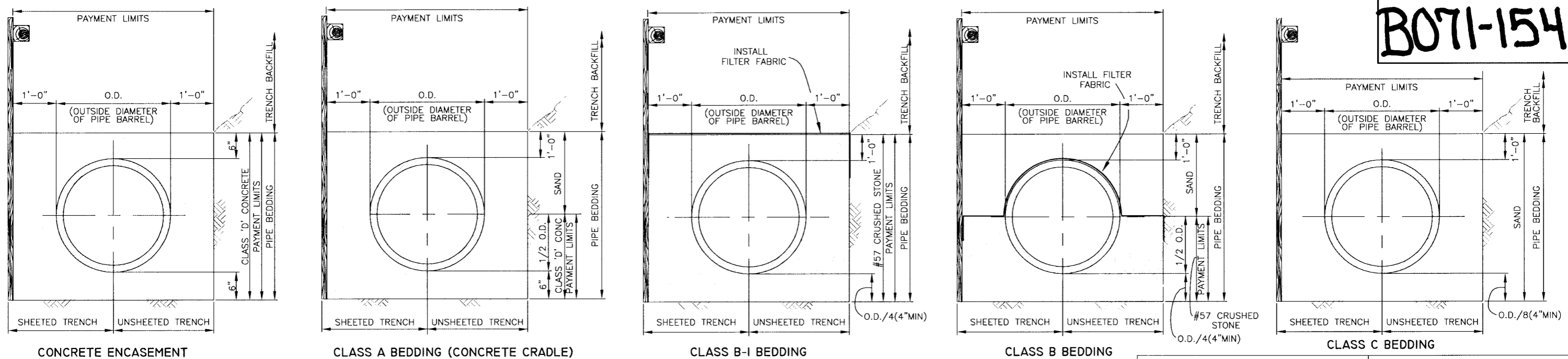
DES: J.P.W.
DRN: W.A.
CKD: JF
DATE: 11/23/11

CITY of TAMPA
WASTEWATER DEPARTMENT

PLAN & PROFILE
HORATIO ST.: FROM ALLEY EAST OF HOWARD AVE.
TO EAST OF ALBANY AVE.

W.O. 5336
SHEET
4
OF 10

B071-154



CONCRETE ENCASEMENT CLASS A BEDDING (CONCRETE CRADLE) CLASS B-1 BEDDING CLASS B BEDDING CLASS C BEDDING

NOTES:

- 1 ALL TYPES OF PIPE BEDDING SHALL EXTEND TO UNDISTURBED EARTH AT SIDES AND BOTTOM OF THE TRENCH.
- 2 SAND AND CRUSHED STONE PIPE BEDDING SHALL BE PLACED AND COMPACTED IN ACCORDANCE WITH SPECIFICATIONS.

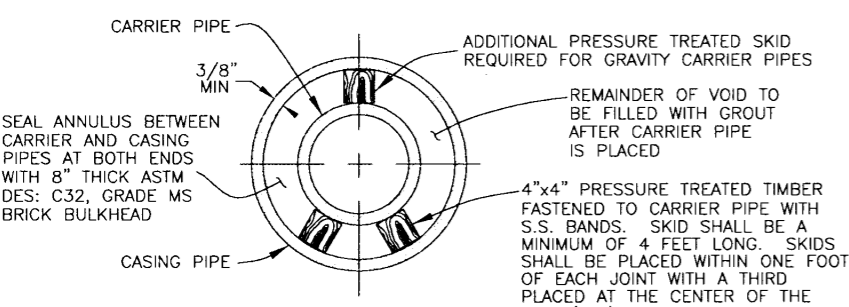
PIPE BEDDING DETAILS

QUANTITIES FOR PAYMENT FOR ADDITIONAL PIPE BEDDING MATERIALS ORDERED IN WRITING BY THE ENGINEER	
NOMINAL INSIDE PIPE DIAMETER (INCHES)	6 8 10 12 14 15 16 18 20 21 24 27 30 36 42 48 54 60 66 72
CUBIC YARDS OF CONCRETE PER LINEAR FOOT OF PIPE IN CONCRETE ENCASEMENT	0.141 0.167 0.191 0.216 0.229 0.256 0.252 0.299 0.300 0.340 0.383 0.427 0.472 0.588 0.690 0.797 0.909 1.027 1.150 1.279
CUBIC YARDS OF CONCRETE PER LINEAR FOOT OF PIPE IN CLASS A BEDDING (CONCRETE CRADLE)	0.071 0.084 0.096 0.108 0.115 0.128 0.126 0.150 0.150 0.170 0.192 0.214 0.236 0.294 0.345 0.399 0.455 0.514 0.575 0.640
CUBIC YARD OF CRUSHED STONE PER LINEAR FOOT OF PIPE IN CLASS B-1 BEDDING	0.172 0.201 0.228 0.225 0.269 0.304 0.298 0.362 0.363 0.419 0.479 0.542 0.608 0.781 0.936 1.103 1.281 1.471 1.673 1.887
CUBIC YARDS OF CRUSHED STONE PER LINEAR FOOT OF PIPE IN CLASS B BEDDING	0.055 0.068 0.078 0.088 0.094 0.111 0.108 0.143 0.143 0.173 0.207 0.243 0.280 0.381 0.475 0.578 0.690 0.810 0.939 1.078

NOTES:

1. PAYMENT FOR ADDITIONAL CRUSHED STONE OR CLASS D CONCRETE PIPE BEDDING MATERIALS WILL BE MADE ONLY FOR PIPE BEDDING NOT SHOWN IN THE PLANS AND ORDERED IN WRITING BY THE ENGINEER.
2. PAYMENT FOR SURFACE RESTORATION WILL BE MADE FOR THE ACTUAL QUANTITIES, AS DETERMINED BY THE ENGINEER, OF SURFACE RESTORED WITHIN THE PAYMENT LIMITS SHOWN.
3. PAYMENT FOR ADDITIONAL SAND OR CRUSHED STONE FOR TRENCH STABILIZATION, ORDERED IN WRITING BY THE ENGINEER, WILL BE MADE FOR THE ACTUAL COMPACTED VOLUME, AS DETERMINED BY THE ENGINEER, OF SAND OR CRUSHED STONE PLACED WITHIN THE PAYMENT LIMITS SHOWN.
4. CONTRACTOR SHALL USE ALL SURPLUS SAND, APPROVED AS SUITABLE, FROM EXCAVATIONS IN THIS CONTRACT PRIOR TO SUPPLYING SAND FROM OTHER SOURCES. PAYMENT FOR ADDITIONAL SAND WILL BE MADE ONLY FOR SAND SUPPLIED FROM SOURCES OTHER THAN EXCAVATIONS IN THIS CONTRACT. SEE SPECIFICATIONS FOR MATERIALS REQUIREMENTS.

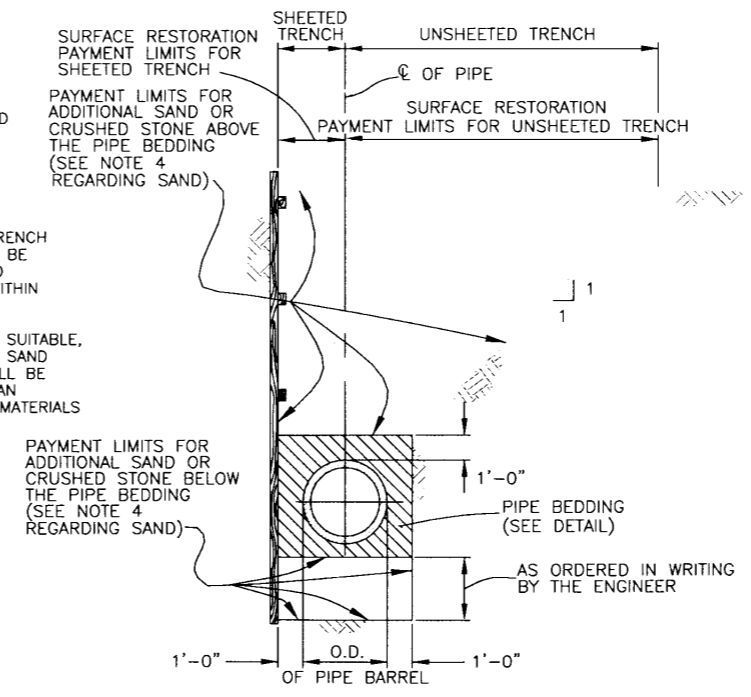
NOTE: STAINLESS STEEL CASING SPACERS AS MANUFACTURED BY CASCADE OR EQUAL MAY BE USED RATHER THAN A TIMBER SKID SYSTEM



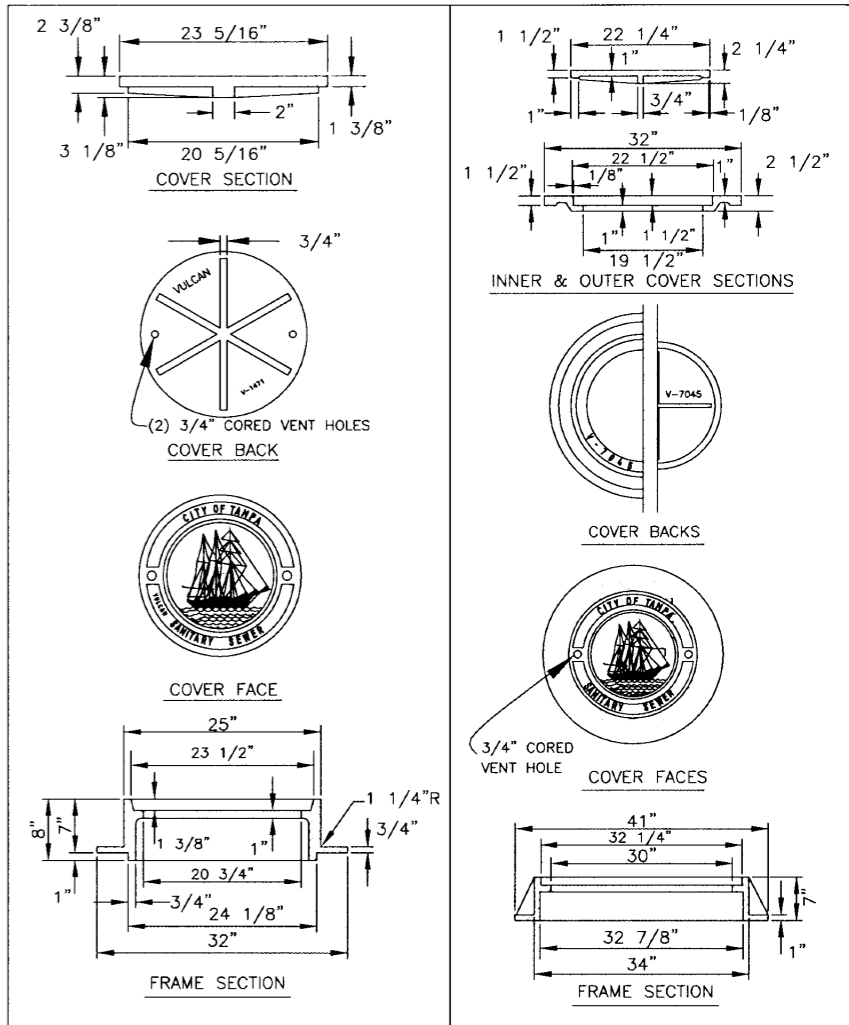
NOTES:
ALL CASING PIPES SHALL BE WELDED STEEL PIPE CONFORMING TO ASTM DES A139 GRADE B OR ASTM DES A53 GRADE B, HAVING A MINIMUM INSIDE DIAMETER AS INDICATED ON PLANS. THE MINIMUM WALL THICKNESS SHALL BE 3/8" OR THICKER IF SO INDICATED ON THE PLAN AND PROFILE DRAWINGS.

CORRESPONDING CARRIER AND CASING PIPE SIZES	
NOMINAL INSIDE DIAMETER OF CARRIER PIPE (INCHES)	4 6 8 10 12 14 15 16 18 20 21 24 27 30 36 42 48 54 60 66 72
MINIMUM INSIDE DIAMETER OF CASING PIPE (INCHES)	12 18 20 24 30 30 30 30 36 36 36 48 48 60 60 66 78 84 90 96 102

DETAIL OF JACKED CROSSINGS



PAYMENT LIMITS FOR SURFACE RESTORATION AND ADDITIONAL SAND OR CRUSHED STONE FOR TRENCH STABILIZATION



FOR MH'S OF SEWERS 24" OR LESS IN DIAMETER:
VULCAN FOUNDRY NO. V-1471,
U.S. FOUNDRY NO. 575-AT, OR EQUAL

FOR MH'S OF SEWERS 27" OR GREATER IN DIAMETER:
VULCAN FOUNDRY NO. V-7045,
U.S. FOUNDRY NO. 230-AB-M, OR EQUAL

HEAVY DUTY CAST IRON MANHOLE FRAME & COVER DETAILS

C:/2000/DWG/PIPE/5336-6

JACINTO CARLOS FERRAS, P.E. #49454
DESIGN DIVISION HEAD
WASTEWATER DEPARTMENT

No.	DATE	REVISIONS
3		
2		
1		

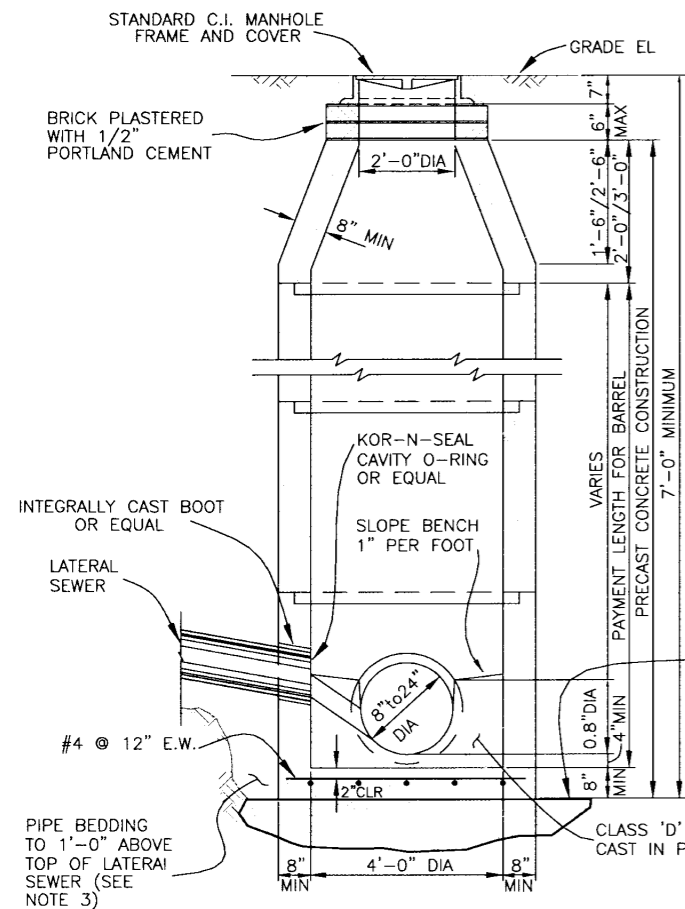
DES: J.P.W.
DRN: W.A.
CKD: Jf
DATE: 11/20/11

CITY of TAMPA
WASTEWATER DEPARTMENT

MISC. DETAILS
W.O. 5336
SHEET
6
OF 10

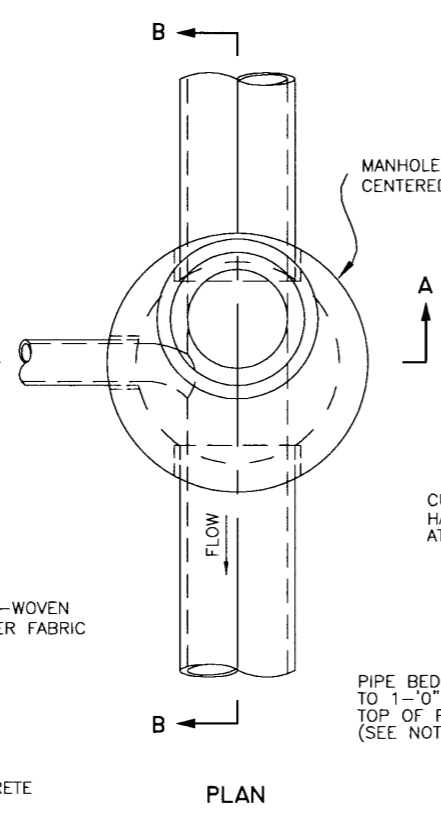
B071-155

R14

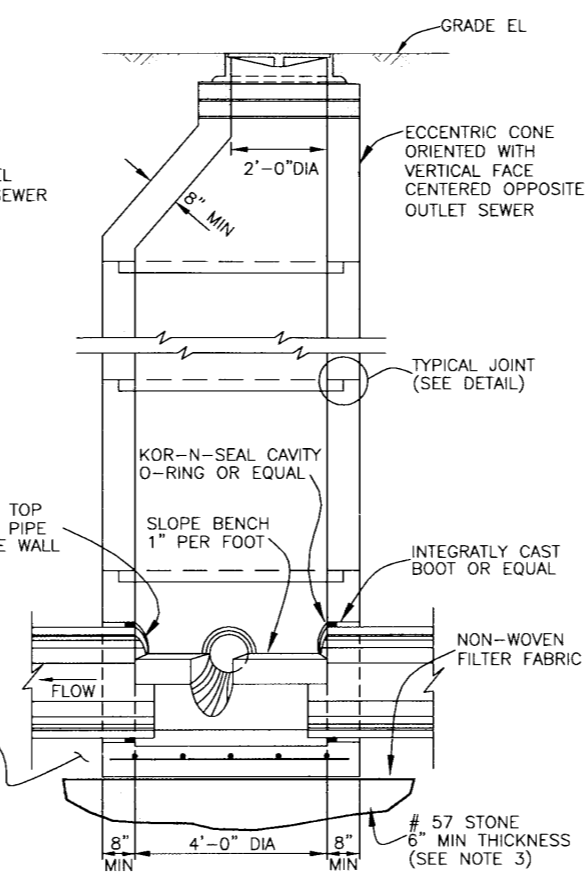


SECTION A-A

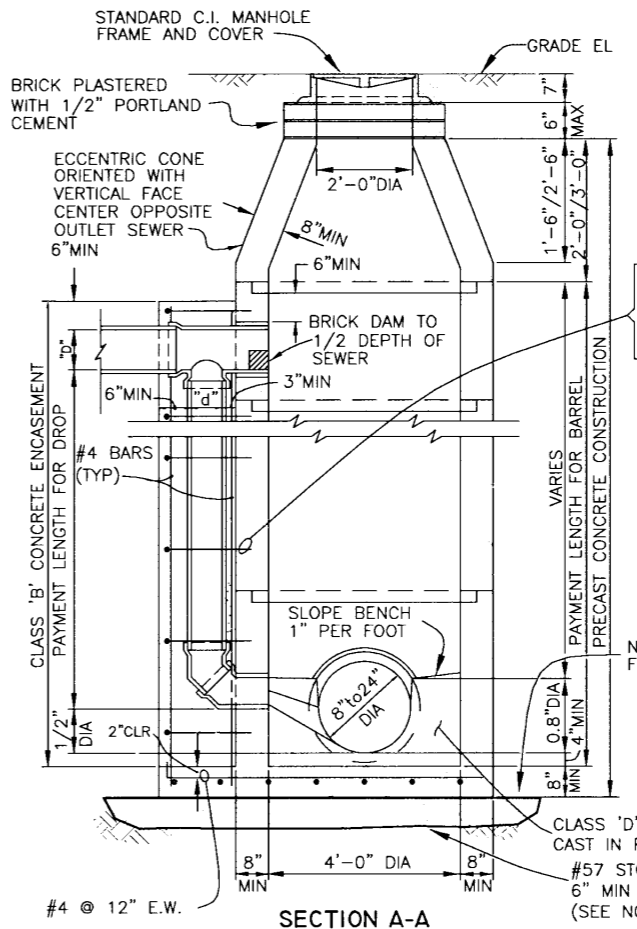
**STANDARD MANHOLE - DEEP TYPE
FOR SEWERS 24" OR LESS IN DIAMETER**



PLAN

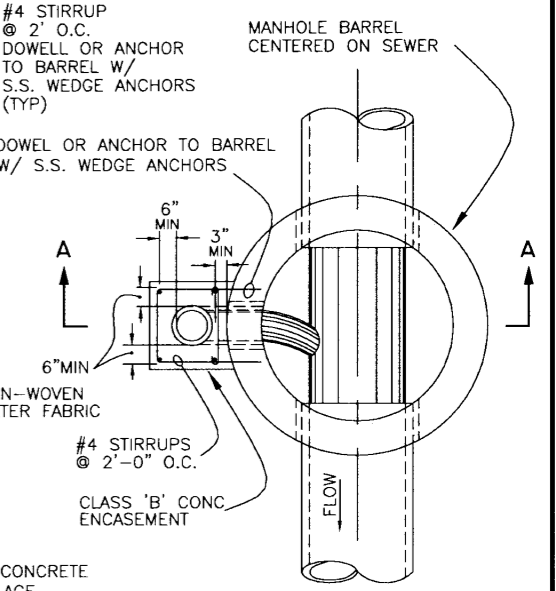


SECTION B-B

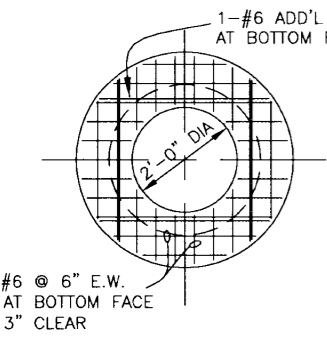


SECTION A-A

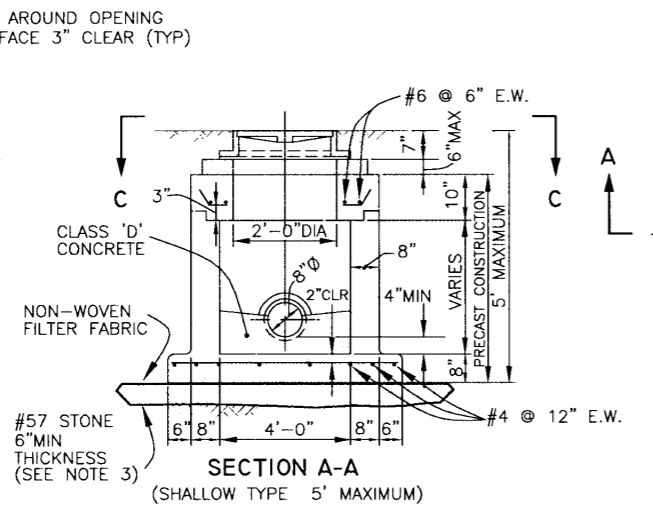
**STANDARD DROP MANHOLE
FOR SEWERS 24" OR LESS IN DIAMETER**



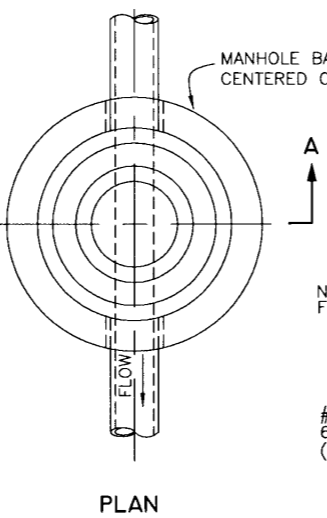
SECTIONAL PLAN



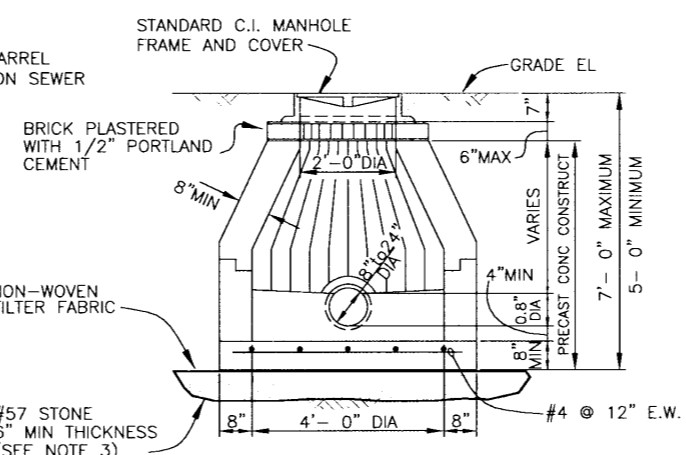
CONCRETE SLAB DETAIL
SECTION C-C



**STANDARD MANHOLE - SHALLOW TYPE
FOR SEWERS 24" OR LESS IN DIAMETER**

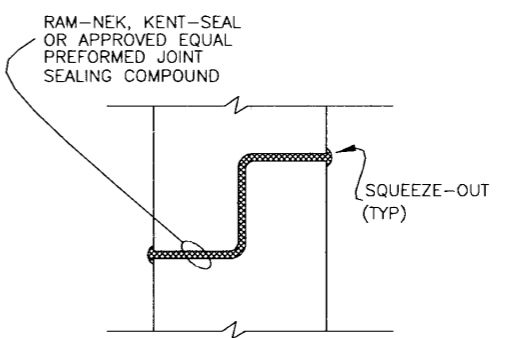


PLAN



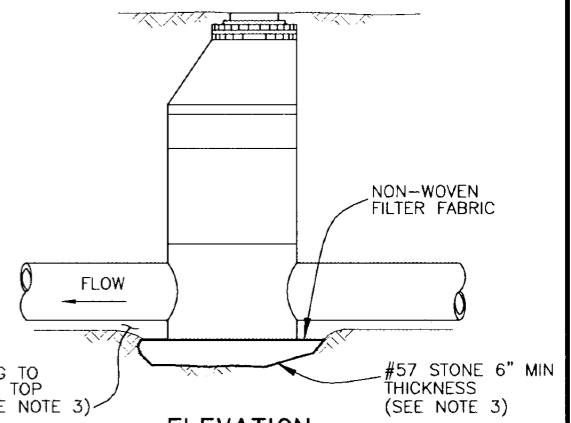
SECTION A-A

5'-0" TO 7'-0" DEEP
(SEE NOTE 4)



MANHOLE BARREL
JOINT DETAIL

NOT TO SCALE
(SEE NOTE 5)



ELEVATION

FOR SEWERS 24" OR LESS IN DIAMETER
NOT TO SCALE

SCHEDULE FOR DROP MANHOLE	
INLET PIPE DIAMETER "D"	DROP PIPE DIAMETER "d"
8"	8"
10"	8"
12"	10"
15"	12"
18"	15"
21"	18"
24"	18"

- NOTES**
1. REINFORCING STEEL FOR ALL MANHOLES SHALL CONFORM TO ASTM-DES. C-48 AND PLACED AS DESCRIBED IN THE SPECIFICATIONS.
 2. ALL PIPE STUBS FROM MANHOLES FOR FUTURE CONNECTIONS OR OTHER CONTRACT DIVISIONS SHALL BE PROVIDED WITH WATER TIGHT PLUGS PLACED FROM WITHIN THE MANHOLE.
 3. SEE SPECIFICATIONS FOR MATERIALS REQUIREMENTS AND PLACEMENTS AND COMPACTION OF PIPE AND STRUCTURE BEDDING.
 4. STANDARD SHALLOW-TYPE MANHOLES WITH DEPTHS BETWEEN A MAXIMUM OF 7'-0" AND A MINIMUM OF 5'-0" MUST HAVE A CONCRETE CONE FOR THE TOP SECTION.
 5. ALL MANHOLE JOINTS MUST BE SEALED WITH AN ACCEPTABLE JOINT SEALING COMPOUND REGARDLESS OF WHETHER AN O-RING GASKET IN A PREFORMED GROOVE IS USED.
 6. FILTER FABRIC SHALL BE NON-WOVEN FABRIC PER D.O.T. SPECIFICATION SECTIONS 514 AND 985 AND SHALL BE WRAPPED ENTIRELY AROUND THE #57 STONE.

C:/2000/DWG/PIPE/5336-7

JACINTO CARLOS FERRAS, P.E. #49454
DESIGN DIVISION HEAD
WASTEWATER DEPARTMENT

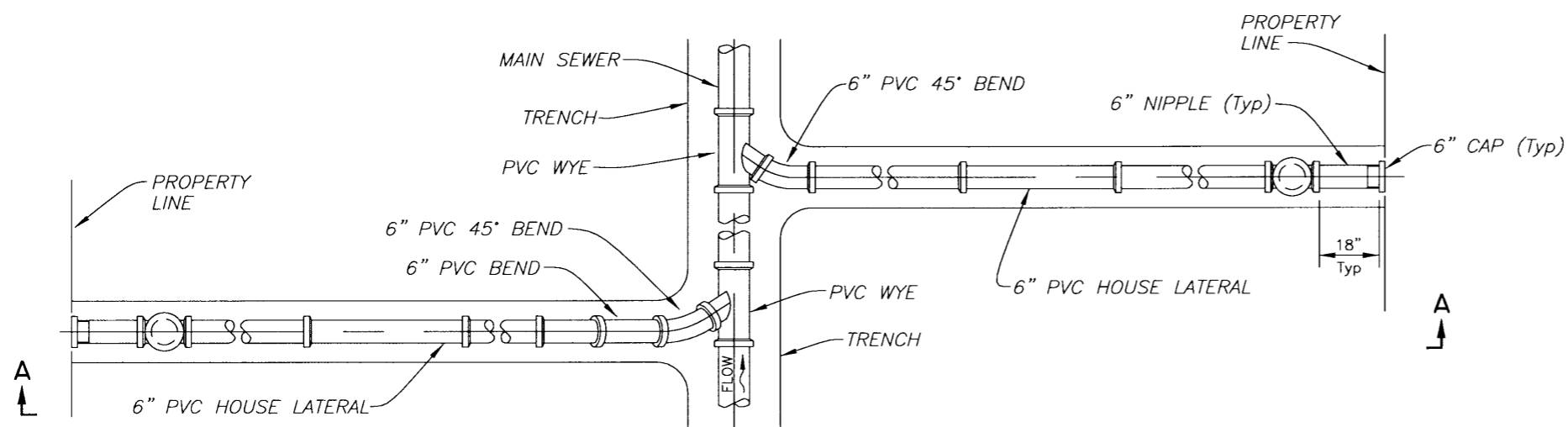
No.	DATE	REVISIONS
3		
2		
1		

DES: J.P.W.
DRN: W.A.
CKD: J.F.
DATE: 9/12/11

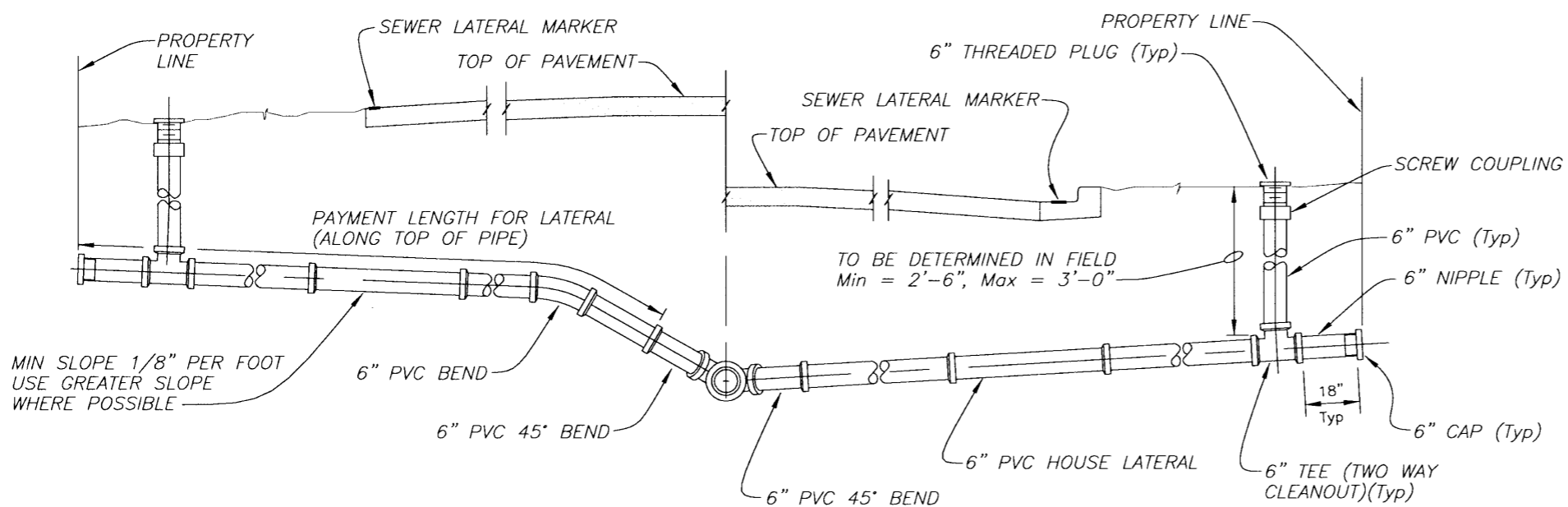
CITY of TAMPA
WASTEWATER DEPARTMENT

MANHOLE DETAILS
(NOT TO SCALE)

W.O. 5336
SHEET
7
OF 10



PLAN



SECTION A-A

TYPE A HOUSE LATERAL DETAIL

Not to Scale

NOTES:

1. The locations of house laterals by symbols on plans are approximate only and the actual location and slopes will be determined in the field by the contractor with the approval of the engineer.
2. The minimum diameter of all house laterals shall be 6 inches.
3. House laterals which pass under drainage ditches with less than 18" of cover or which have less than 30" of cover under pavement shall be Class 54 poly-lined DIP per specifications.
4. The department's standard regarding vertical perpendicular conflicts requires that there be a minimum of 18" clearance between house laterals and all crossing utilities. If, however, conditions dictate that it is impossible to meet this standard, the following notes are intended to address the most common conflict conditions.
5. The minimum clearance between house laterals and water lines shall be 6" under all circumstances. If the house lateral is below a water line and has between 6" and 18" of clearance or if the lateral is above the water line regardless of clearance, then a nominal 20' length of green AWWA Class 150 C900 PVC pipe shall be centered over/under the water line.
6. If the house lateral must pass over any utility other than a water line with less than 18" clearance, the lateral shall remain SDR 35 PVC pipe.
7. If the house lateral must pass under any utility other than a water line with less than 18" clearance, the lateral shall remain SDR 35 PVC pipe unless the utility poses a structural load too great for the PVC lateral as determined by the engineer, each conflict will be reviewed on a case by case basis.
8. Transitions from SDR 35 PVC to either C900 or ductile iron pipes shall be made with PVC rigid adaptors. Transitions from SDR 35 PVC to either existing clay or concrete pipes shall be made with Fernco flexile adaptors or equal.

C:2000/DWG/PIPE/5336-8

JACINTO CARLOS FERRAS, P.E. #49454
DESIGN DIVISION HEAD
WASTEWATER DEPARTMENT

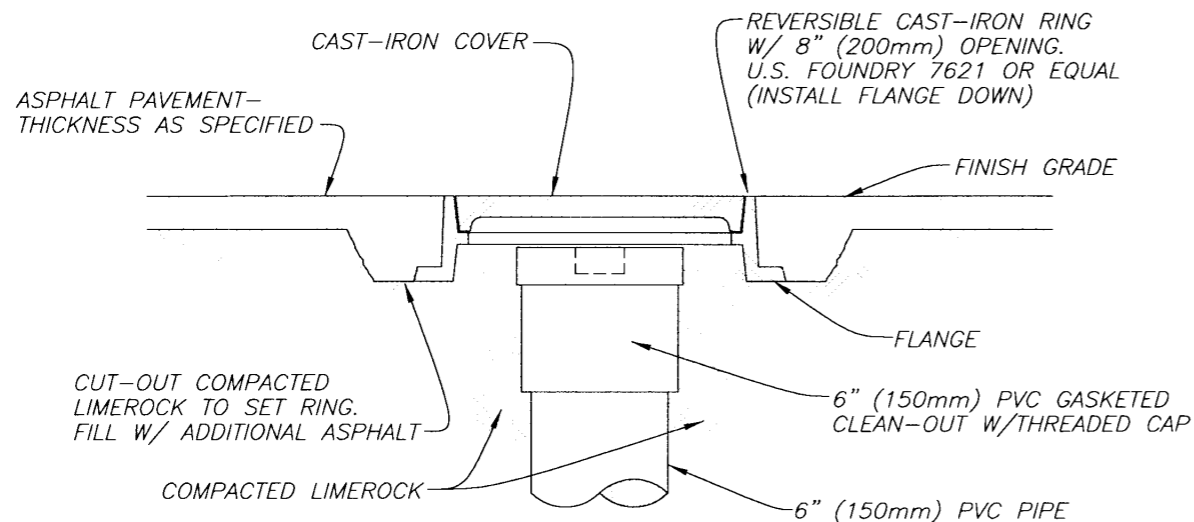
No.	DATE	REVISIONS
6		
5		
4		

DES: J.P.W.
DRN: W.A.
CKD: JF
DATE: 11/23/11

CITY of TAMPA
WASTEWATER DEPARTMENT

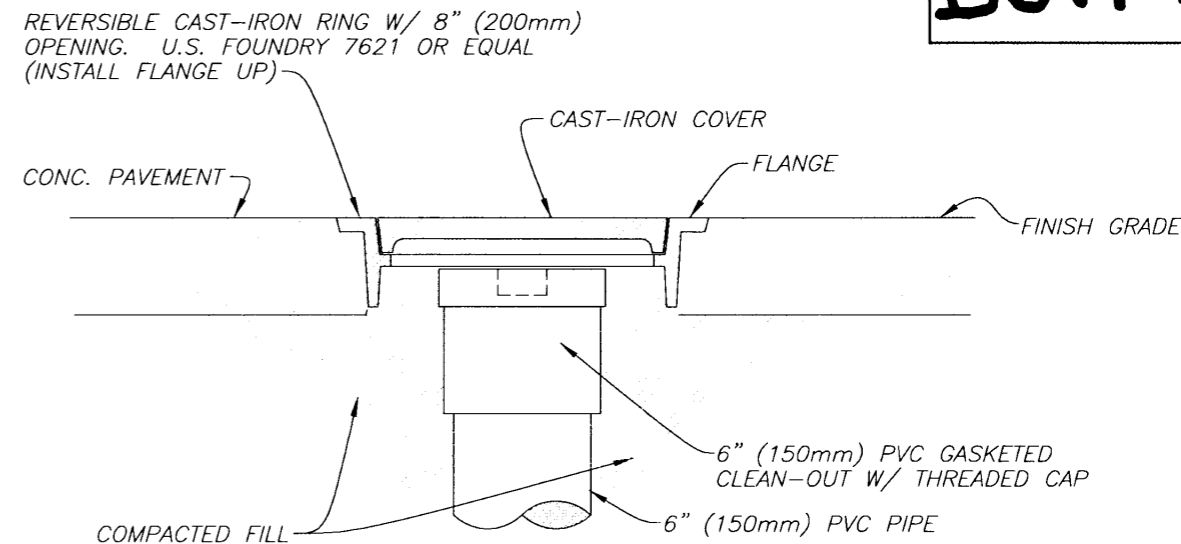
HOUSE CONNECTION DETAIL

W.O. 5336
SHEET
8
OF 10



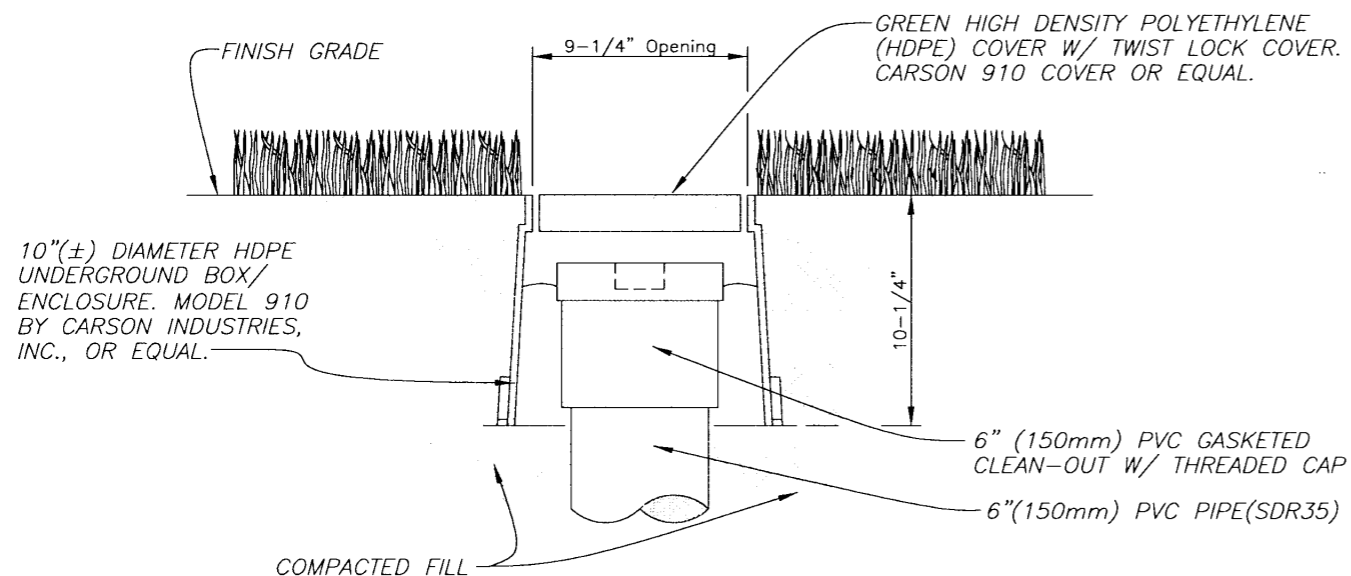
CLEAN-OUT W/ COVER FOR ASPHALT PAVED AREAS

Not to Scale



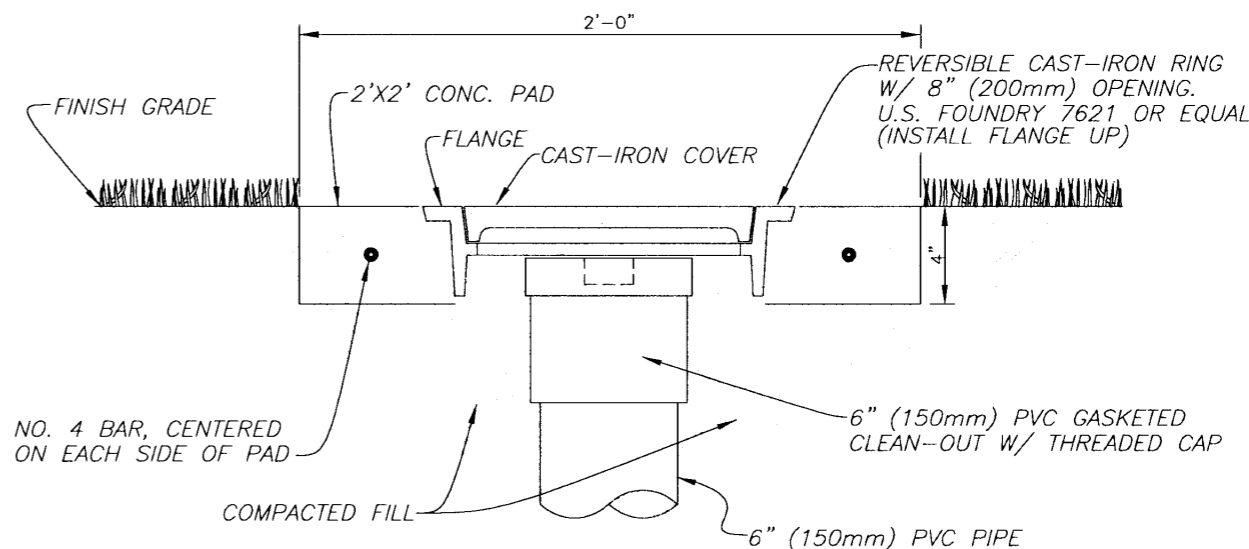
CLEAN-OUT W/ COVER FOR CONCRETE PAVED AREAS

Not to Scale



CLEAN-OUT W/ COVER FOR GRASS (NON-VEHICULAR TRAFFIC) AREAS

Not to Scale



CLEAN-OUT W/COVER FOR GRASSED AREAS W/VEHICULAR TRAFFIC

Not to Scale

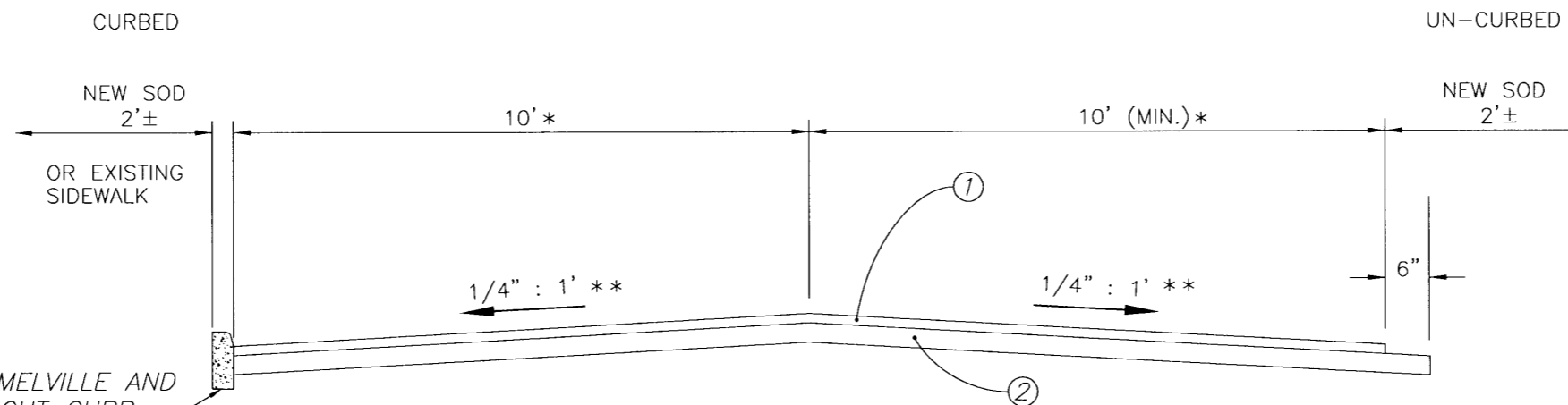
NOTES:

- Contractor shall adjust the clean-out and cast iron ring and cover or HDPE box and cover so that the cover is seated securely and the top of the cover is flush with the finish grade. The PVC cap of the clean-out shall be no more than 4 inches deeper than the finish grade.
- PVC cap may be provided with recessed nut.
- Cast iron cover shall be provided with an embossed letter "S" for identification, HDPE cover shall be marked "SEWER" for identification.
- Cast iron ring and cover, or HDPE box and cover, as well as the four (4 sf) square feet of material (concrete or asphalt around the clean-out), are part of the clean out installation and cost shall be included within the unit price for clean-out with no additional payment.
- All clean-outs on this project shall be one of the four types shown on this sheet. Field conditions will determine which type.

1-1

C:/2000/DWG/PIPE/5336-9

JACINTO CARLOS FERRAS, P.E. #49454 DESIGN DIVISION HEAD WASTEWATER DEPARTMENT	No.	DATE	REVISIONS	DES: J.P.W. DRN: W.A. CKD: JF DATE: 11/28/11	CITY of TAMPA WASTEWATER DEPARTMENT	CLEANOUT COVER DETAILS	W.O. 5336
	3						SHEET
	2						9
	1						OF 10



ON THE NORTH BLOCK BETWEEN MELVILLE AND FREMONT AVES, CONSTRUCT STRAIGHT CURB NEXT TO THE EXISTING SIDEWALK.

1. 1-3/4" THICK, TYPE S-3, ASPHALTIC CONCRETE
2. 8" THICK, CRUSHED CONCRETE BASE

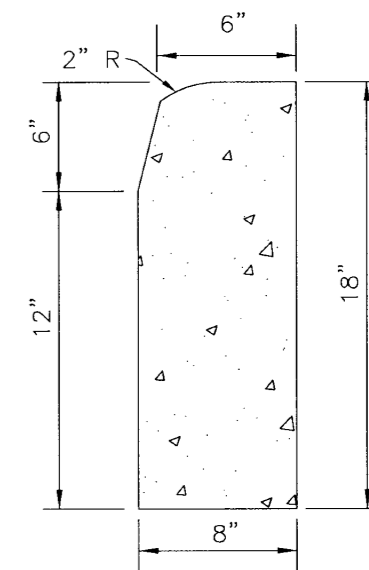
* DESIRED MINIMUM

** ADJUST CROSS SLOPE TO MATCH PROJECTED GUTTER FLOW OF CROSS STREETS

HORATIO STREET - TYPICAL SECTION

NOT TO SCALE

REPEAT OF GENERAL NOTES



STRAIGHT/TYPE "D" CURB

NOT TO SCALE

8. THE CONTRACTOR SHALL RESTRICT HIS MAIN TRENCH WIDTH AS NECESSARY TO REMAIN WITHIN THE EDGES OF THE EXISTING ASPHALT PAVEMENT. ANY CURB, DRIVEWAY, SIDEWALK OR LANDSCAPING DAMAGED OR DESTROYED OUTSIDE THE MAIN TRENCH (OR WIDENED PAVEMENT) SHALL BE REPAIRED BY THE CONTRACTOR WITH NO ADDITIONAL PAYMENT.
9. THE PAVEMENT SHALL BE RECONSTRUCTED TO THE EDGE OF THE EXISTING PAVEMENT, OR TO A DISTANCE OF 10- FEET FROM THE RIGHT-OF-WAY CENTERLINE WHICHEVER IS GREATER.
10. AT THE INTERSECTIONS WITH CROSS STREETS, THE EXISTING SOUTH TO NORTH GUTTER FLOWS OF THE INTERSECTING STREETS SHALL BE MAINTAINED ACROSS HORATIO STREET.
11. AT INTERSECTIONS WITH ALLEYS, THE CITY'S INSPECTOR WILL DETERMINE THE DISTANCE THE ALLEY MAY HAVE TO BE RECONSTRUCTED, 5' MAXIMUM.
12. WHERE THE PAVEMENT RECONSTRUCTION MEETS THE EXISTING PAVEMENT, SIDEWALK(S) OR DRIVEWAY(S), THE CONTRACTOR SHALL SAWCUT THE EXISTING PAVEMENT, SIDEWALK OR DRIVEWAY TO PROVIDE A NEAT, CLEAN JOINT.
13. WHERE THE PAVEMENT IS SLIGHTLY WIDENED, THE CITY'S INSPECTOR WILL DETERMINE THE ADDITIONAL DISTANCE THE EXISTING SIDEWALK AND DRIVEWAY MAY HAVE TO BE REPLACED IN ORDER TO PROVIDE THE DESIRABLE CONNECTION SLOPE BETWEEN THE RECONSTRUCTED PAVEMENT AND EXISTING SIDEWALK AND DRIVEWAY.

1=1

C:/2000/DWG/PIPE/5336-10

JACINTO CARLOS FERRAS, P.E. 49454 DESIGN DIVISION HEAD WASTEWATER DEPARTMENT	No.	DATE	REVISIONS	DES: J.P.W. DRN: W.A. CKD: JF DATE: 11/28/11	CITY of TAMPA WASTEWATER DEPARTMENT	PAVEMENT RESTORATION DETAIL	W.O. 5336
	3						SHEET
	2						10
	1						OF 10