


THE ENCLOSED DOCUMENT IS
PROVIDED FOR YOUR CONVENIENCE.

 **REGISTER AS A “PLANHOLDER”**
TO BE LISTED ON THE WEBPAGE,
TO BE FOUND BY POTENTIAL
SUB-CONTRACTORS,
AND TO BE OFFICIALLY NOTIFIED OF
ADDENDA.

FOR ASSISTANCE OR
TO REGISTER CONTACT:

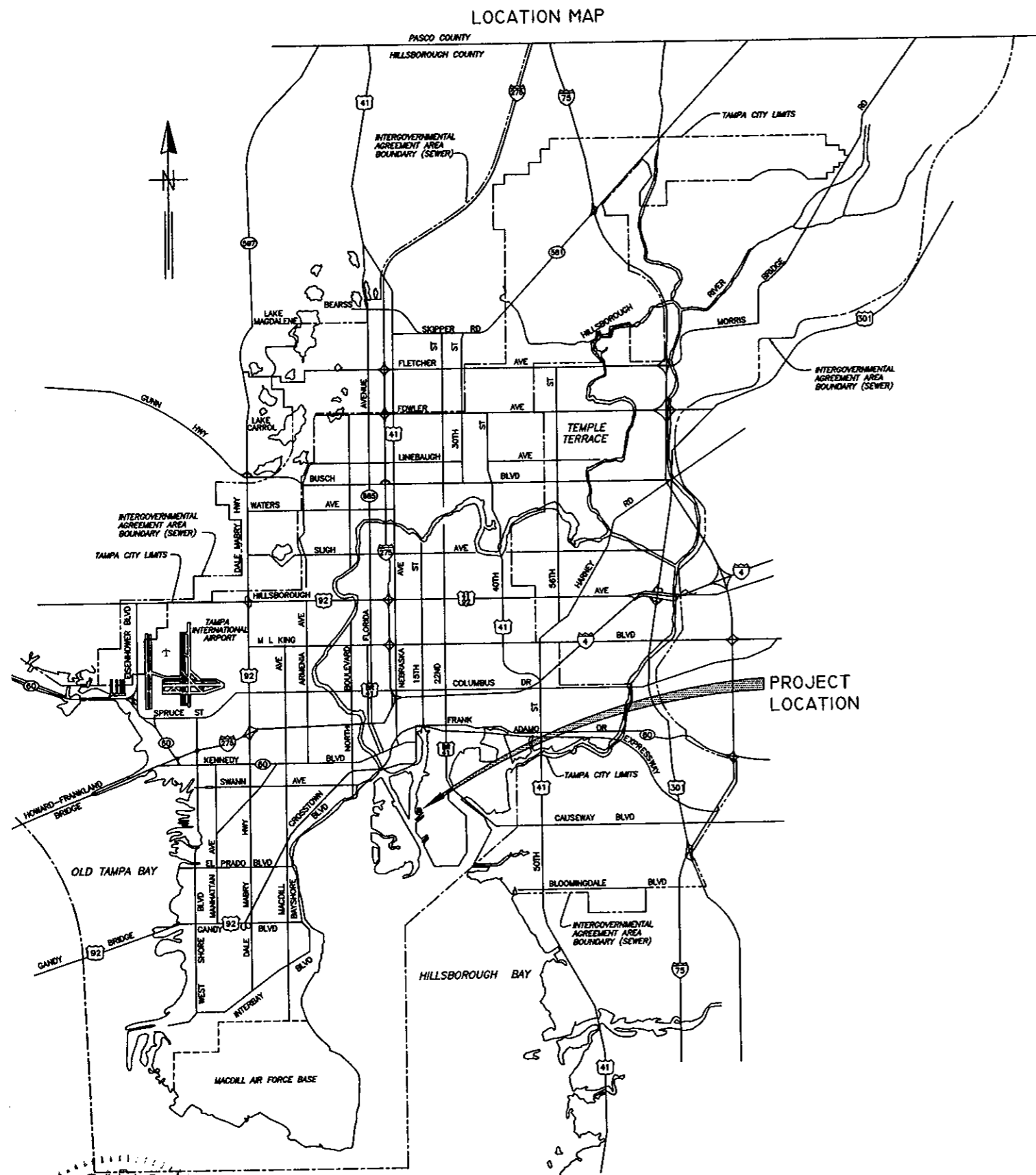
MAILTO:BERNICE.WHEELER@TAMPA.GOV.NET
BERNICE WHEELER, (813)274-8456, FAX 274-8080
CONTRACT ADMINISTRATION DEPARTMENT
306 E. JACKSON ST. #280A4N
TAMPA, FL 33602

CITY of TAMPA



WASTEWATER DEPARTMENT PLANS FOR HOWARD F. CURREN AWTP FINAL SEDIMENTATION TANKS REHABILITATION, PHASE I

CONTRACT 08-C-00019



1/8" = 1'

C:\ACAD2004\DWG\TP/5088

JACINTO CARLOS FERRAS, P.E. #49454
DESIGN DIVISION HEAD
WASTEWATER DEPARTMENT

No.	DATE	REVISIONS
3	3/25/08	
2		
1		

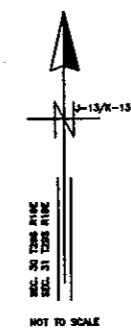
DES: J.H.
DRN: J.H.
CKD: JF
DATE: 2/25/08

CITY of TAMPA
HOWARD F. CURREN
ADVANCED WASTEWATER TREATMENT PLANT

COVER SHEET

W.O. 4011
SHEET
1

LOCATION MAP



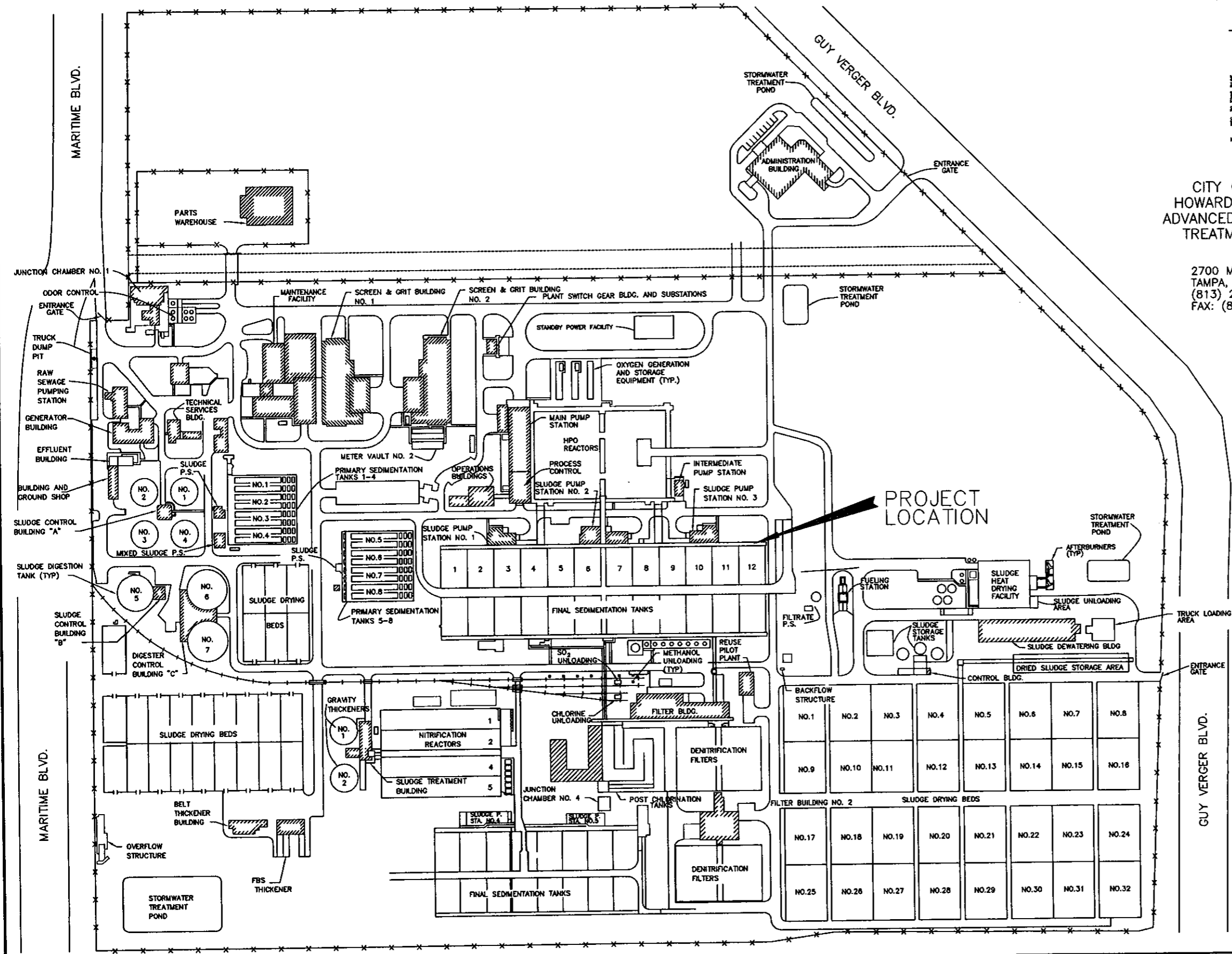
CITY OF TAMPA
HOWARD F. CURREN
ADVANCED WASTEWATER
TREATMENT PLANT

2700 MARITIME BLVD.
TAMPA, FL 33605
(813) 247-3451
FAX: (813) 248-5269

INDEX

SHT NO	TITLE
1	COVER SHEET
2	PROJECT MAP & INDEX
3	FINAL SEDIMENTATION TANKS OVERVIEW
4	CONSTRUCTION / DEMOLITION NOTES
5	SEDIMENTATION TANKS 1 THRU 6 PLAN VIEW
6	FINAL SEDIMENTATION TANK SECTIONS
7	SEDIMENTATION TANKS CROSS COLLECTOR SECTIONS
8	INFLUENT END LONGITUDINAL COLLECTOR SECTIONS
9	EFFLUENT END LONGITUDINAL COLLECTOR SECTIONS
10	INFLUENT CHANNEL AIR PIPING PLAN & SECTION (1)
11	INFLUENT CHANNEL AIR PIPING PLAN & SECTION (2)
12	AIR PIPING DROP-PIPE SECTIONS
13	PROPOSED DROP-PIPE REPLACEMENT SYSTEMS
14	MISCELLANEOUS SUPPORT BRACKET DETAILS
15	AIR PIPING REHAB. SCHEDULE AND DETAILS

PLOT



FILENAME

JACINTO CARLOS FERRAS, P.E. #49454
DESIGN DIVISION HEAD
WASTEWATER DEPARTMENT

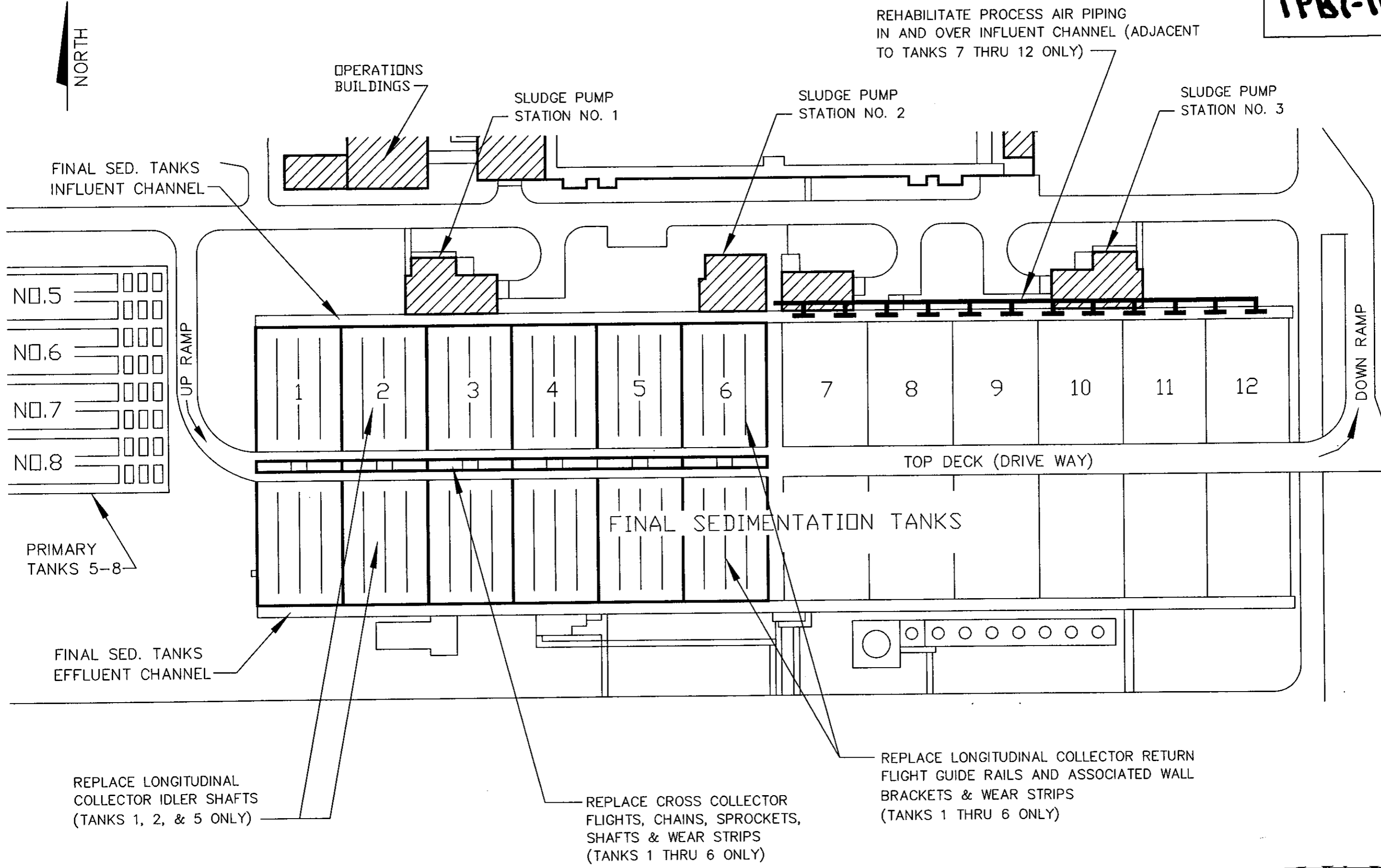
No.	DATE	REVISIONS
3		
2		
1		

DES: JH
DRN: JH
CKD: JF
DATE: 3/25/08

CITY of TAMPA
HOWARD F. CURREN
ADVANCED WASTEWATER TREATMENT PLANT

FINAL SEDIMENTATION TANKS REHABILITATION,
PHASE I
PROJECT MAP & INDEX

W.O. 4011
SHEET
2



JACINTO CARLOS FERRAS, P.E. #49454
 DESIGN DIVISION HEAD
 WASTEWATER DEPARTMENT

No.	DATE	REVISIONS
3		
2		
1		

DES: JH
 DRN: JHJ
 CKD: JF
 DATE: 3/25/08

CITY of TAMPA
 WASTEWATER DEPARTMENT

FINAL SEDIMENTATION TANKS REHABILITATION,
 PHASE I
 FINAL SEDIMENTATION TANKS OVERVIEW

W.D. 4011
 SHEET
3

User: SS13 Drawing Name: C:\Program Files\Land Desktop 2004\DWG\PUMP STATION\HFCAMT Old Final Tanks 4011\Old Final Tanks 1-6_Cross Collector Reh.dwg
 Layout - Location Detail, Mar 24, 2008 - 10:36am

CONSTRUCTION NOTES

GENERAL

- G-1. CONTRACTOR SHALL COORDINATE ALL CONSTRUCTION ACTIVITIES WITH TREATMENT PLANT PERSONNEL AND PLANT OPERATIONS.
- G-2. EXISTING DIMENSIONS AND ELEVATIONS ARE BASED ON THE BEST INFORMATION AVAILABLE. TRUE DIMENSIONS AND ELEVATIONS SHALL BE DETERMINED IN THE FIELD PRIOR TO LAYOUT AND SHOP DRAWING SUBMITTALS.
- G-3. ALL SUBMITTALS AND SHOP DRAWINGS SHALL BE ORIGINALS OR HIGH QUALITY COPIES (EASILY READABLE). NO FAXED SHEETS OR POOR QUALITY COPIES WILL BE ACCEPTED FOR SUBMITTAL REVIEW.
- G-4. CONTRACTOR SHALL COMPLETE WORK IN TANKS 1 THRU 6 PRIOR TO BEGINNING WORK ON AIR PIPING ADJACENT TO TANKS 7 THRU 12.
- G-5. CONTRACTOR SHALL WORK IN ONLY ONE SEDIMENTATION TANK AT A TIME. CONTRACTOR SHALL COMPLETE TANKS, NUMBERED 1, 2 & 5, PRIOR TO WORKING ON THE OTHER THREE TANKS.
- G-6. SEDIMENTATION TANKS (AND INFLUENT CHANNEL) MAY NEED TO BE USED FOR STORAGE IN CASE OF AN EMERGENCY. IN SUCH CASE, THE CONTRACTOR MAY BE REQUIRED TO EVACUATE THE SEDIMENTATION TANKS AT ANY TIME WITH LESS THAN 30-MINUTES NOTICE. FOR THIS PURPOSE, CONTRACTOR MUST REMOVE ALL CONSTRUCTION EQUIPMENT AND MATERIALS FROM THE TANKS AT THE END OF EACH WORKING DAY.
- G-7. AWP PERSONNEL SHALL BE RESPONSIBLE FOR DRAINING SEDIMENTATION TANKS. CONTRACTOR SHALL PROVIDE A MINIMUM OF FIVE WORKING DAYS NOTICE (IN WRITING) BEFORE HAVING AWP PERSONNEL DRAIN A TANK.
- G-8. CONTRACTOR SHALL NOT GROUT ANY COLLECTOR SHAFT ASSEMBLIES OR GUIDE RAIL BRACKETS IN PLACE UNTIL THE TANK SET-UP HAS BEEN INSPECTED AND APPROVED BY THE CITY'S INSPECTOR AND THE COLLECTOR SYSTEM MANUFACTURER'S (POLYCHEM) REPRESENTATIVE.
- G-9. ALL HARDWARE, UNLESS OTHERWISE NOTED, SHALL BE TYPE 316 STAINLESS STEEL.
- G-10. ALL WEAR STRIP REPLACEMENTS SHALL BE 3/4" x 3" x 10' WEAR STRIPS MANUFACTURED FROM STARBOARD, AS SUPPLIED BY CURBELL PLASTICS, INCORPORATED. WEAR STRIPS SHALL BE PROVIDED WITH COUNTER-SUNK BOLT HOLES AND SLOTS SO AS TO PROVIDE 1/2" OF CLEARANCE BETWEEN THE TOP OF THE WEAR STRIP AND THE TOP OF THE COUNTERSUNK BOLT.
- G-11. LEADING ENDS OF WEAR STRIPS SHALL BE BEVELED-DOWN AT 45-DEGREE ANGLE SO AS TO PREVENT FLIGHTS FROM CATCHING WEAR STRIP ENDS.
- G-11. CONTRACTOR SHALL CLEAN & PAINT EXTERIOR 4-INCH DIAMETER SUMP DISCHARGE PIPES AT SLUDGE PUMPING STATIONS 2 AND 3. (APPROX. 8-FEET OF PIPE TOTAL) SEE DETAIL "D", SHEET 15. CONTRACTOR SHALL SUBMIT CHART OF BEIGE AND TAN TYPE TONES FOR COLOR SELECTION.

CROSS COLLECTORS

- C-1. CONTRACTOR SHALL REMOVE AND REPLACE ALL CROSS COLLECTOR SHAFTS, CHAINS, SPROCKETS, FLIGHTS, WEAR STRIPS AND ALL APPURTENANT ITEMS IN TANKS 1 THRU 6. FLIGHTS, CHAINS, SPROCKETS AND SHAFTS SHALL BE AS SUPPLIED BY POLYCHEM SYSTEMS, A DIVISION OF BRENTWOOD INDUSTRIES.
- C-2. CONTRACTOR SHALL NOT REMOVE THE CROSS COLLECTORS' DRIVE MOTORS OR GEAR BOXES.

AIR PIPING REPLACEMENTS

- A-1. CONTRACTOR SHALL REPLACE EXISTING 4" BLOCK VALVES AT EACH OF THE DOWNLEGS OF THE PROCESS AIR PIPING IN THE FINAL SEDIMENTATION TANKS INFLUENT CHANNEL, ADJACENT TO TANKS 7 THRU 12, WITH 4" KEYSTONE VALVE, FIG. 920, RUBBER-LINED BUTTERFLY VALVES. (A TOTAL OF 12 VALVES ARE TO BE REPLACED.)
- A-2. CONTRACTOR SHALL REPLACE ALL 4-INCH AIR PIPING BETWEEN THE PROCESS AIR HEADER PIPE, AT THE TOP OF EACH OF THE DROP LEGS, AND THE DIFFUSERS AT THE BOTTOM OF THE FINAL SEDIMENTATION TANKS INFLUENT CHANNEL. (A TOTAL OF 12 DROP PIPES ARE TO BE REPLACED.)
- A-3. CONTRACTOR SHALL REPLACE DRESSER TYPE COUPLINGS AND ONE 8" SLEEVE COUPLING IN PROCESS AIR HEADER PIPE FOR SEDIMENTATION TANKS 7 THRU 12 WITH MUELLER BRAND, 540 SERIES, SINGLE SECTION ALL STAINLESS STEEL PIPE REPAIR CLAMPS. SEE TABLE "A" ON SHEET 15 FOR THE NUMBER AND SIZES OF REQUIRED REPAIR SLEEVES.
- A-4. CONTRACTOR SHALL CLEAN THE REMAINING PROCESS AIR PIPING, DOWNSTREAM OF THE 12-INCH BLOCK VALVE, OVER THE INFLUENT END OF SEDIMENTATION TANKS, NUMBERED 7 THROUGH 12, AND APPLY THE FOLLOWING HIGH PERFORMANCE COATINGS AS PER MANUFACTURER'S (PPG) RECOMMENDATIONS:
 SURFACE PREPARATION: SSPC-SP 2/3 "HAND / POWER TOOL"
 PRIME COAT: PITT-GUARD RAPID COAT DTR 95-245
 FINISH COAT: PITTHANE ULTRA 95-812
 CONTRACTOR SHALL SUBMIT CHART OF LIGHT GREEN TYPE TONES FOR COLOR SELECTION.
- A-5. CONNECTIONS BETWEEN STAINLESS STEEL FLANGES AND DIP (OR STEEL) FLANGES SHALL BE ELECTRICALLY INSULATED WITH BAKELITE WASHERS AND PLASTIC TUBES INSERTED IN THE BOLT SHANKS.

LONGITUDINAL COLLECTORS

- L-1. ALL IDLER (NON-DRIVE) SHAFTS IN SEDIMENTATION TANKS 1, 2 AND 5 SHALL BE REPLACED BY IDLER STUB SHAFT AND SPROCKET ASSEMBLIES MADE OF CAST NYLON-6 WITH SELF-LUBRICATED BEARINGS, AS SUPPLIED BY POLYCHEM SYSTEMS, A DIVISION OF BRENTWOOD INDUSTRIES.
- L-2. CONTRACTOR SHALL REPLACE ALL RETURN FLIGHT GUIDE RAILS, WEAR STRIPS, AND RAIL SUPPORT BRACKETS IN TANKS 1 THRU 6.
- L-3. EXISTING WEAR STRIPS AT THE BOTTOM OF THE LONGITUDINAL COLLECTORS SHALL REMAIN IN PLACE.
- L-4. ALL RETURN FLIGHT GUIDE RAILS SHALL BE REPLACED WITH 20-FOOT LENGTHS OF 3" x 3" x 3/8" THICK FIBERGLASS ANGLE, WITH A DESIGN LOADING OF 2.5 LB/FT, AS SUPPLIED BY POLYCHEM SYSTEMS.
- L-5. ALL PROPOSED FLIGHT RAILS SHALL BE SUPPORTED AT 10-FOOT (MAX.) INTERVALS BY WALL BRACKET ASSEMBLIES MANUFACTURED FROM NYLON 6-6, AS SUPPLIED BY POLYCHEM SYSTEMS.
- L-6. WEAR STRIPS SHALL BE FASTENED TO FIBERGLASS GUIDE RAILS WITH 1/4" TYPE 316 SS COUNTERSUNK BOLTS AND 316 SS NYLON INSERT SELF-LOCKING NUTS (NY-LOCK NUTS) AT INTERVALS OF 2.5- FEET (MAX).

DEMOLITION NOTES

- D-1. CONTRACTOR SHALL WORK IN ONLY ONE TANK AT A TIME.
- D-2. SEDIMENTATION TANKS (AND INFLUENT CHANNEL) MAY NEED TO BE USED FOR STORAGE IN CASE OF AN EMERGENCY. IN SUCH CASE, THE CONTRACTOR MAY BE REQUIRED TO EVACUATE THE SEDIMENTATION TANKS AT ANY TIME WITH LESS THAN 30-MINUTES NOTICE. FOR THIS PURPOSE, CONTRACTOR MUST REMOVE ALL EQUIPMENT AND LOOSE MATERIALS FROM THE TANKS AT THE END OF EACH WORKING DAY.
- D-3. THE UPPER DECK OF THE SEDIMENTATION TANKS SHALL BE KEPT CLEAN OF MATERIALS AND DEBRIS AT ALL TIMES. WALKWAYS AND DRIVEWAY SHALL BE KEPT CLEAR FOR AWP PERSONNEL TO PASS THROUGH.
- D-4. SALVAGEABLE MATERIAL, AS DETERMINED BY AWP PERSONNEL, SHALL BE DELIVERED TO THE PARTS WAREHOUSE LOCATED ON THE TREATMENT PLANT SITE. NON-SALVAGEABLE MATERIALS ARE TO BE REMOVED FROM THE SITE AND PROPERLY DISPOSED OF AT THE CONTRACTOR'S EXPENSE.
- D-5. CONTRACTOR SHALL REMOVE DESIGNATED WALL BRACKETS, CONVEYOR SHAFTS AND GROUT BACK TO A SMOOTH CONCRETE SURFACE. CONTRACTOR SHALL CUT ANY EXPOSED STEEL BACK TO 1-INCH BELOW WALL SURFACE AND GROUT OVER.

PLOT

FILENAME

JACINTO CARLOS FERRAS, P.E. #49454
 DESIGN DIVISION HEAD
 WASTEWATER DEPARTMENT

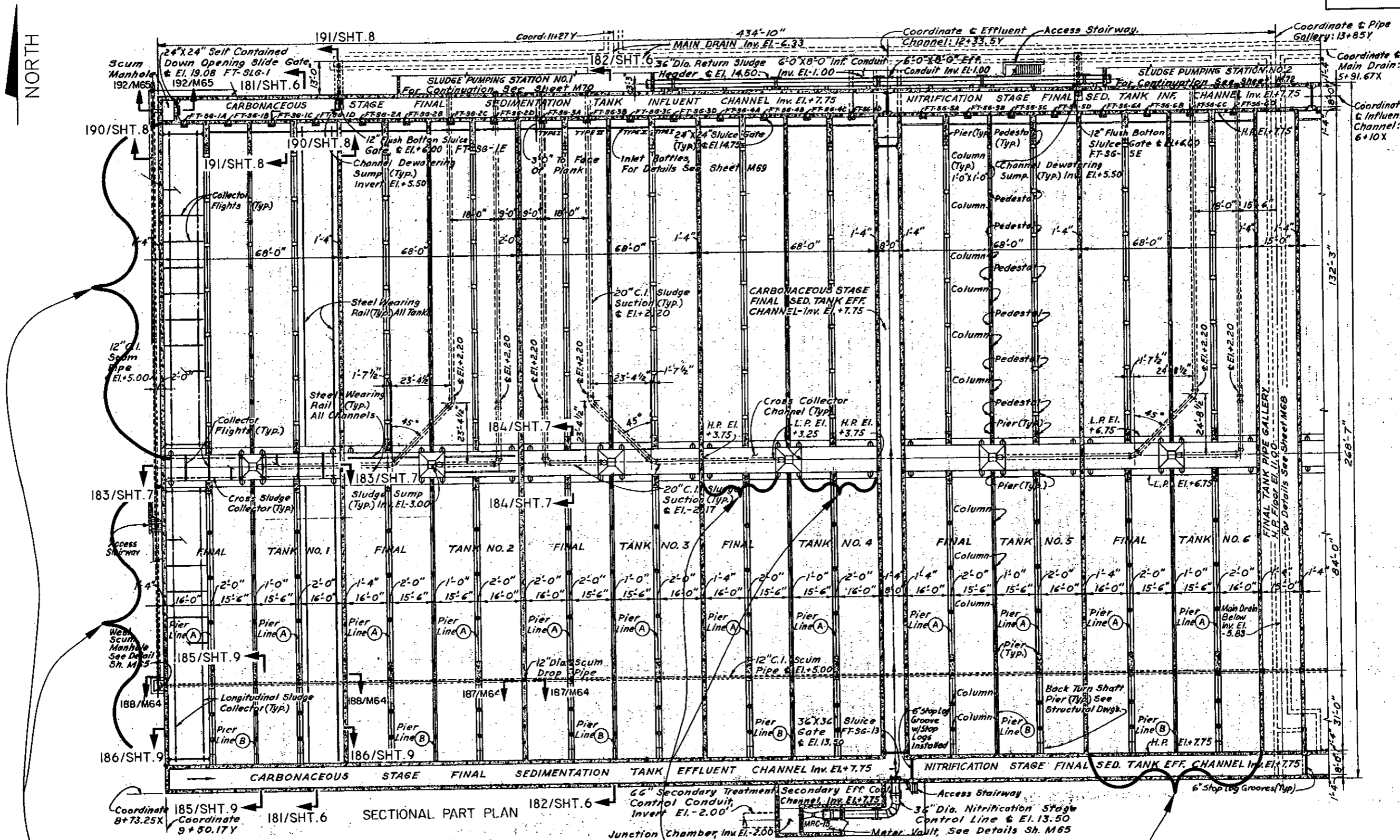
No.	DATE	REVISIONS
3		
2		
1		

DES: J.H.
 DRN: J.H.
 CKD: 3/25/08
 DATE: Jf

CITY of TAMPA
 HOWARD F. CURREN
 ADVANCED WASTEWATER TREATMENT PLANT

FINAL SEDIMENTATION TANKS REHABILITATION,
 PHASE I
 CONSTRUCTION/DEMOLITION NOTES

W.O. 4011
 SHEET
 4



- 1. REPLACE LONGITUDINAL COLLECTOR'S RETURN FLIGHT GUIDE RAILS, SUPPORT BRACKETS AND WEAR STRIPS (TYPICAL, TANKS 1 THRU 6)
- 2. REPLACE LONGITUDINAL COLLECTOR'S EXISTING IDLER SHAFTS & SPROCKETS WITH NYLON STUB SHAFTS & SPROCKETS (TYPICAL, TANKS 1, 2 & 5)

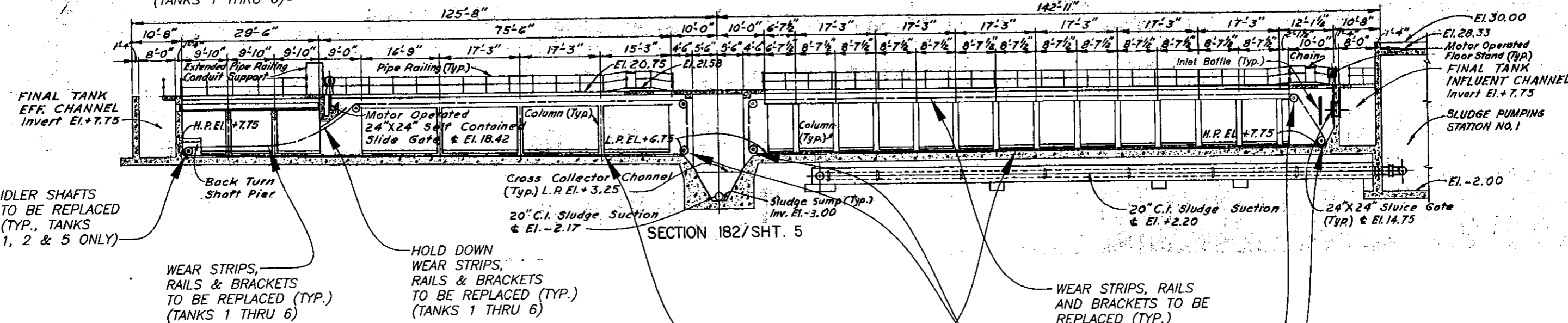
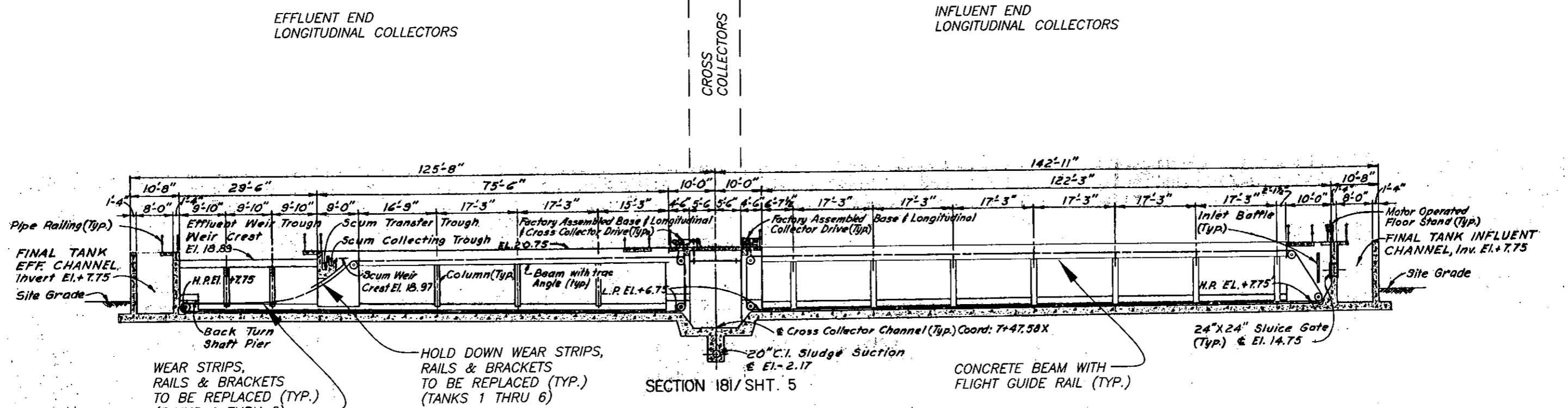
REPLACE CROSS COLLECTOR FLIGHTS, CHAINS, SHAFTS, SPROCKETS. (TYP. OF 6-TANKS).

EACH TANK HAS 4-INFLUENT LONGITUDINAL COLLECTORS AND 4-EFFLUENT LONGITUDINAL COLLECTORS AND 2-CROSS COLLECTORS.

User: SSI3 Drawing Name: C:\Program Files\Land Desktop 2004\DWG\PUMP STATION\HFCAMT Old Final Tanks 4011\Old Final Tanks 1-6_Cross Collector Reht.dwg Layout - Mar 20, 2008 - 5:00pm

No.	DATE	REVISIONS	DES: JH	CITY of TAMPA WASTEWATER DEPARTMENT	FINAL SEDIMENTATION TANKS REHABILITATION, PHASE I SEDIMENTATION TANKS I THRU 6 PLAN VIEW	W.D. 4011 SHEET 5
3			DRN: JHJ			
2			CKD: JF			
1			DATE: 3/25/08			

JACINTO CARLOS FERRAS, PE #49454
DESIGN DIVISION HEAD
WASTEWATER DEPARTMENT



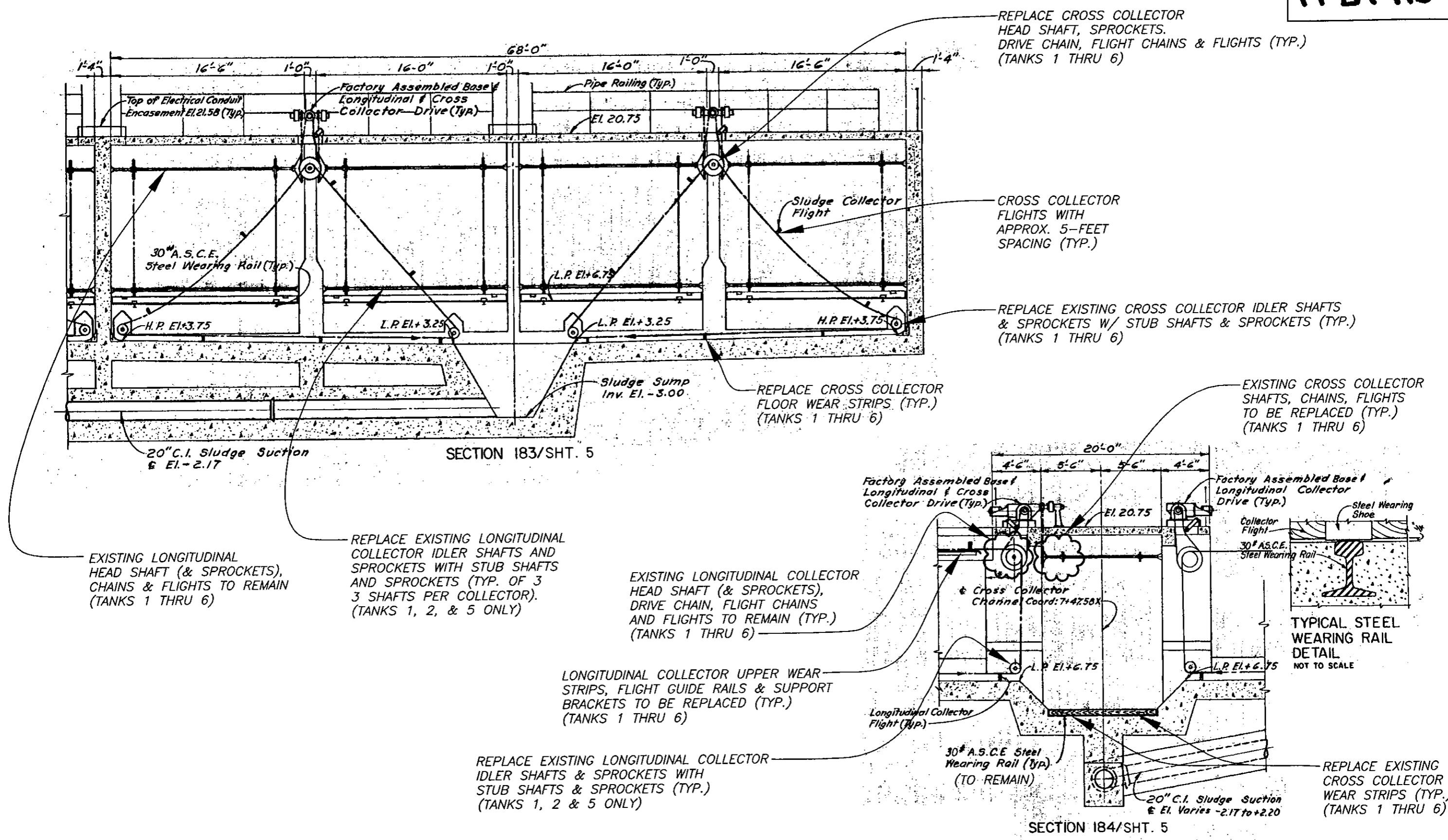
NOTES

- LONGITUDINAL COLLECTORS WEAR STRIPS SHALL BE 10' IN LENGTH AND FASTENED TO RAIL AT 2.5' INCREMENTS (MAX.)
- LONGITUDINAL COLLECTORS RETURN FLIGHT GUIDE RAILS SHALL BE 3/8"x 3"x 3" FIBERGLASS ANGLE AND SHALL BE PROVIDED IN 20-FOOT SECTIONS.
- LONGITUDINAL COLLECTOR RETURN FLIGHT GUIDE RAILS SHALL BE SUPPORTED BY NYLON BRACKETS SET AT A MAXIMUM DISTANCE OF 10' ON-CENTERS

No.	DATE	REVISIONS	DES: JH	CITY of TAMPA WASTEWATER DEPARTMENT	FINAL SEDIMENTATION TANKS REHABILITATION PHASE I FINAL SEDIMENTATION TANK SECTIONS	W.D. 4011 SHEET 6
3			DRN: JHJ			
2			CKD: JF			
1			DATE: 3/25/08			

JACINTO CARLOS FERRAS, PE #49454
DESIGN DIVISION HEAD
WASTEWATER DEPARTMENT

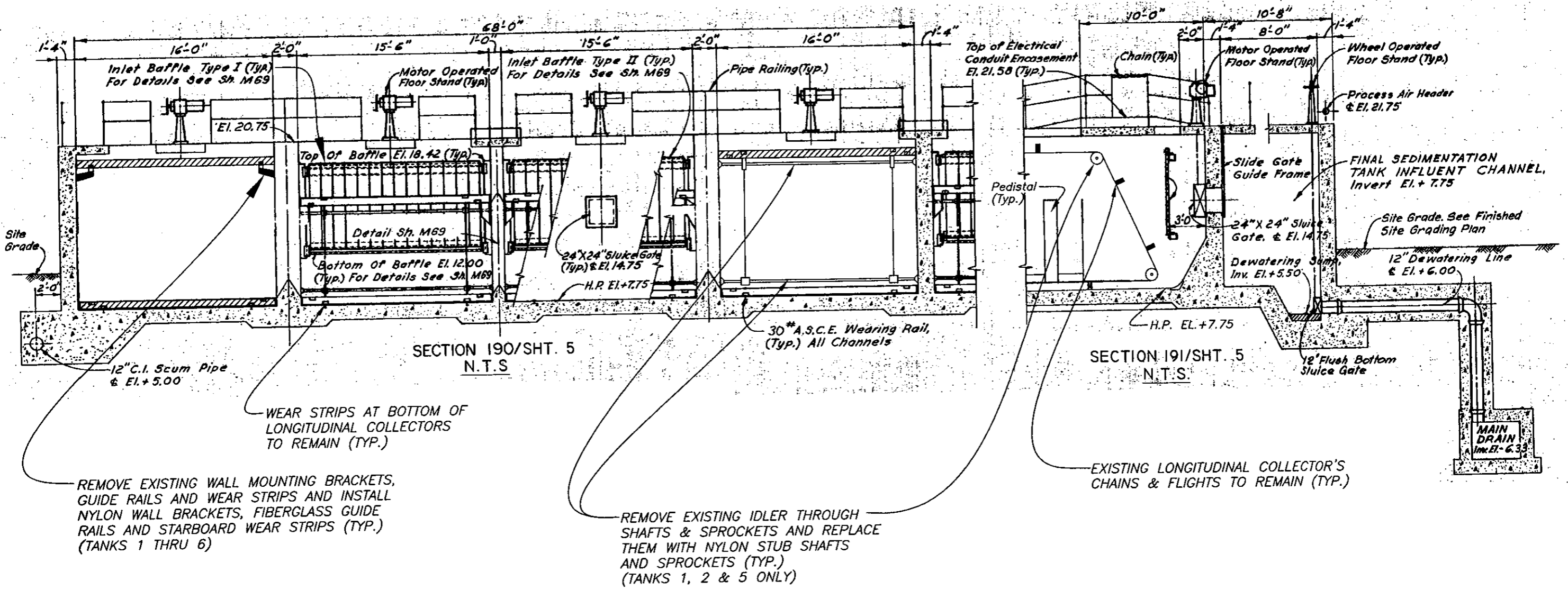
User: SS13 Drawing Name: C:\Program Files\Land Desktop 2004\DWG\PUMP STATION\HFCANT Old Final Tanks 4011D Old Final Tanks 1-6_Cross Collector Reh.dwg
Layout: Mar 24, 2008 - 12:00pm



User: SS13 Drawing Name: C:\Program Files\Land Desktop 2004\DWG\PLUMP STATION\TPB7-115.dwg Layout: Mar 24, 2008 - 11:13am

No.	DATE	REVISIONS	DES: JH	CITY of TAMPA WASTEWATER DEPARTMENT	FINAL SEDIMENTATION TANKS REHABILITATION, PHASE I SEDIMENTATION TANKS CROSS COLLECTOR SECTIONS	W.D. 4011 SHEET 7
3			DRN: JHJ			
2			CKD: 3/25/08			
1			DATE: JF			

JACINTO CARLOS FERRAS, PE #49454
DESIGN DIVISION HEAD
WASTEWATER DEPARTMENT



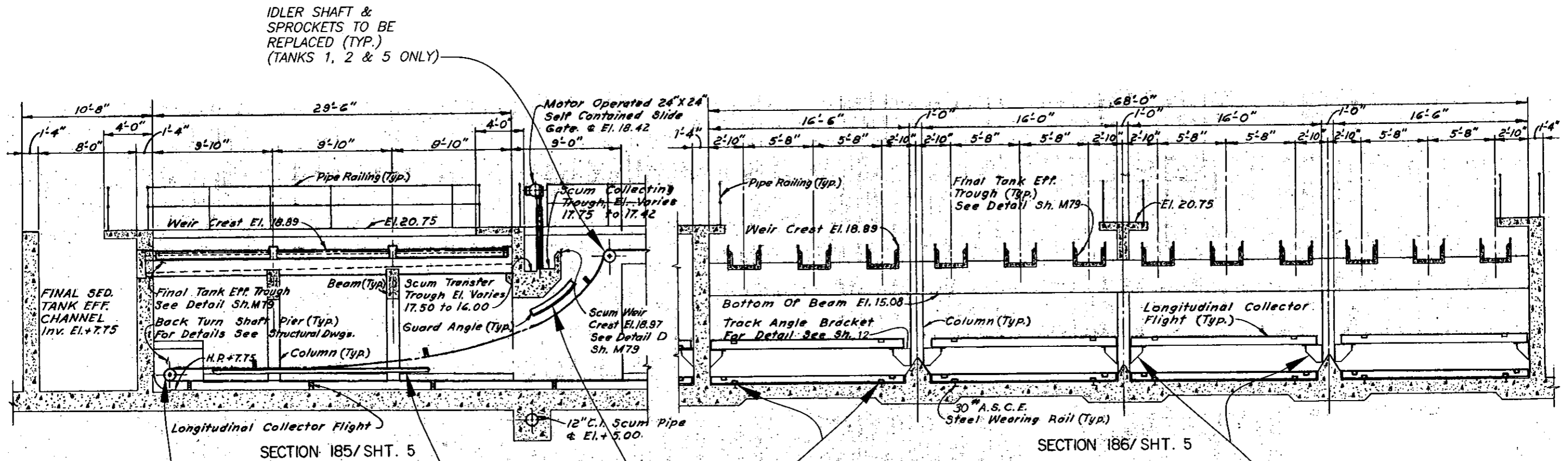
No.	DATE	REVISIONS
3		
2		
1		

DES: JH
DRN: JHJ
CKD: JF
DATE: 3/25/08

CITY of TAMPA
WASTEWATER DEPARTMENT

FINAL SEDIMENTATION TANKS REHABILITATION
PHASE I,
INFLUENT END LONGITUDINAL COLLECTOR SECTIONS

User: SST3 Drawing Name: C:\Program Files\Land Desktop 2004\DWG\PUMP STATION\HFC\AWT Old Final Tanks 1-6_Cross Collector Rehab.dwg Layout: Mar 20, 2008 - 11:54am



IDLER SHAFT & SPROCKETS TO BE REPLACED (TYP.) (TANKS 1, 2 & 5 ONLY)

IDLER SHAFT AND SPROCKETS TO BE REPLACED (TYP.) (TANKS 1, 2 & 5 ONLY)

RETURN FLIGHT RAILS, BRACKETS & WEAR STRIPS TO BE REPLACED (TYP.) (TANKS 1 THRU 6)

GUIDE RAILS, BRACKETS & WEAR STRIPS TO BE REPLACED (TYP.) (TANKS 1 THRU 6)

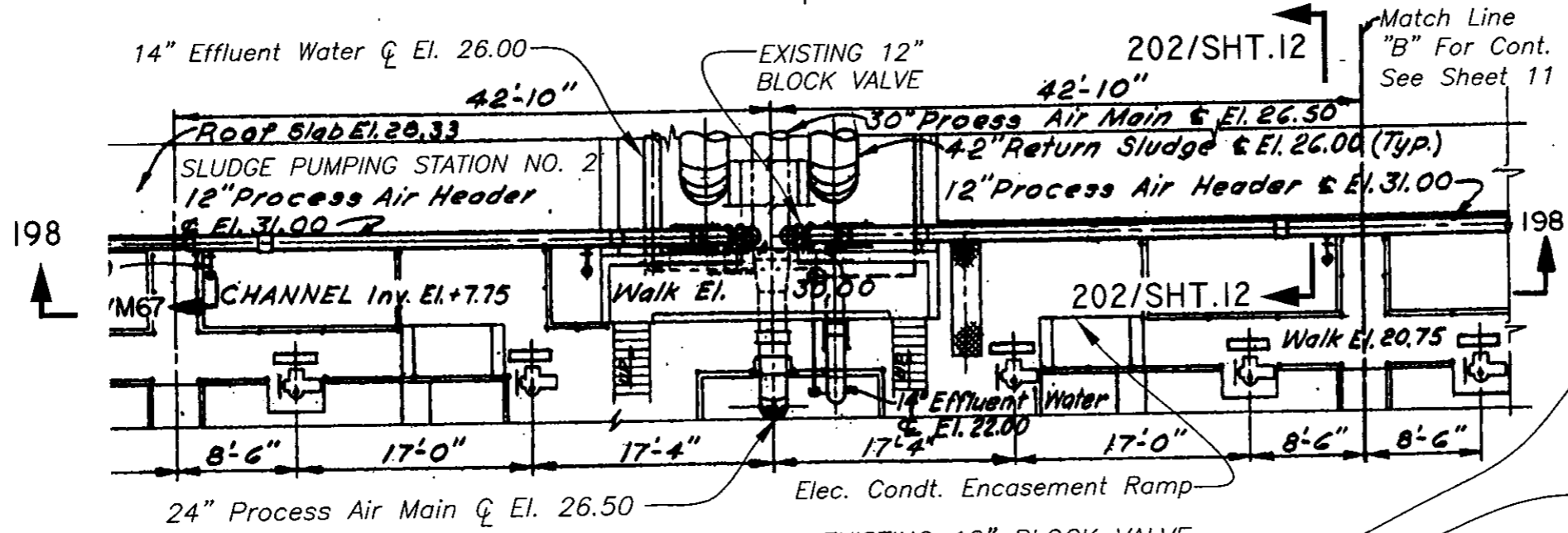
WEAR STRIPS AT BOTTOM OF LONGITUDINAL COLLECTORS TO REMAIN (TYP.)

WALL BRACKETS, FLIGHT GUIDE RAILS & WEAR STRIPS TO BE REPLACED (TYP.) (TANKS 1 THRU 6)

JACINTO CARLOS FERRAS, PE #49454 DESIGN DIVISION HEAD WASTEWATER DEPARTMENT	No.	DATE	REVISIONS	DES: JH	CITY of TAMPA WASTEWATER DEPARTMENT	FINAL SEDIMENTATION TANKS REHABILITATION PHASE I, EFFLUENT END LONGITUDINAL COLLECTOR SECTIONS	W.D. 4011
	3			DRN: JHJ			SHEET
	2			CKD: JF			9
	1			DATE: 3/25/08			

User: SSI3 Drawing Name: C:\Program Files\Land Desktop 2004\DWG\PUMP STATION\HFCANT Old Final Tanks 4011\Old Final Tanks 1-6_Cross Collector Ref.dwg
 Layout: Mar 20, 2008 - 11:55am

CLEAN AND PAINT EXISTING AIR HEADER PIPE FROM 12" BLOCK VALVE DOWNSTREAM TO NEW PIPE REPLACEMENTS



CLEAN, PREP AND PAINT EXISTING AIR PIPING HEADER (AND ANCHORS) FROM 12" BLOCK VALVE DOWNSTREAM TO 4" DROP PIPES.

REPLACE ALL PIPE COUPLINGS IN HEADER PIPE WITH STAINLESS STEEL PIPE REPAIR SLEEVES (SEE TABLE "A" SHT. 15)

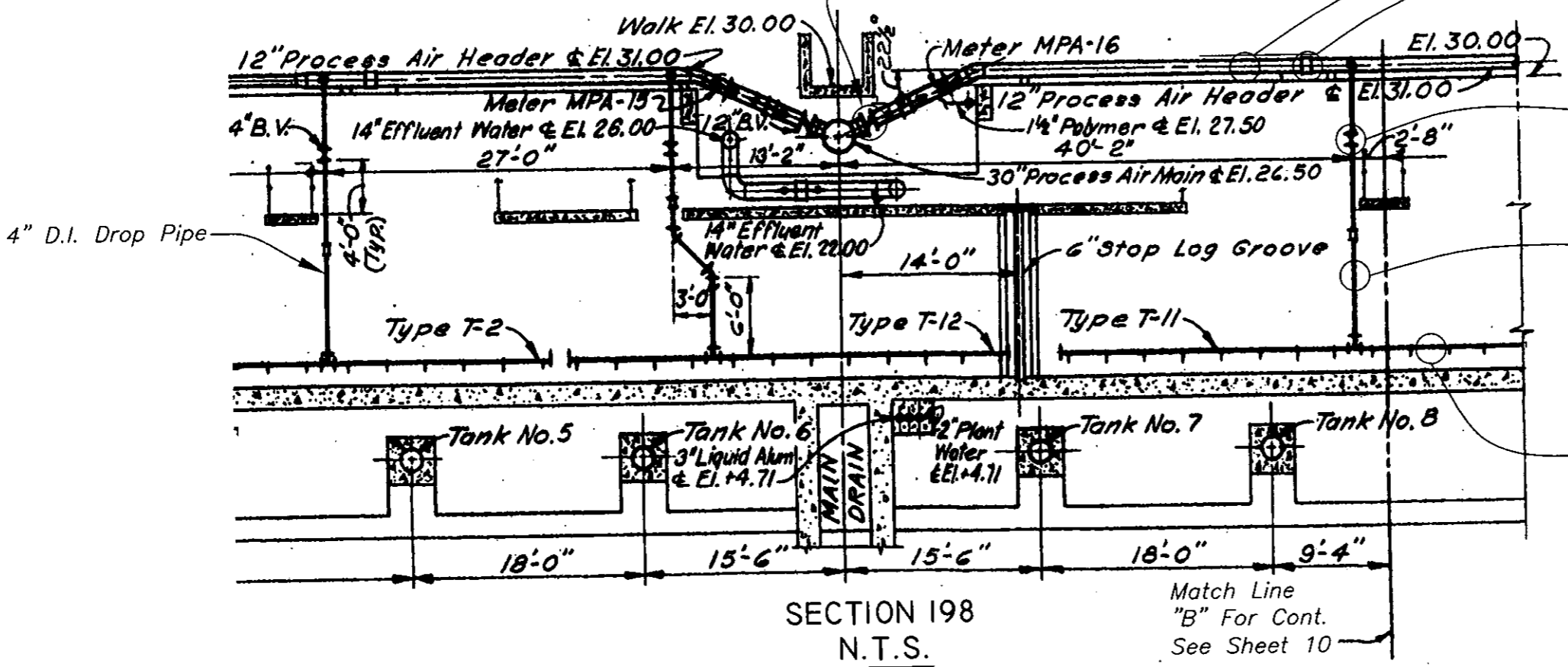
REPLACE EXISTING 4" BLOCK VALVE (TYP) (AT TANKS 7 THRU 12)

REPLACE EXISTING 4" AIR PIPING (AND SUPPORTS) BETWEEN FLANGE AT AIR PIPING HEADER AND 3" DIFFUSER PIPE (TYP) (AT TANKS 7 THRU 12)

EXISTING 3" DIFFUSER PIPE TO REMAIN (TYP)

NOTE 1: See sheet 13 for details of drop pipe replacement system.

NOTE 2: See sheet 14 for details of existing pipe supports



SECTION 198
N.T.S.

Match Line
"B" For Cont.
See Sheet 10

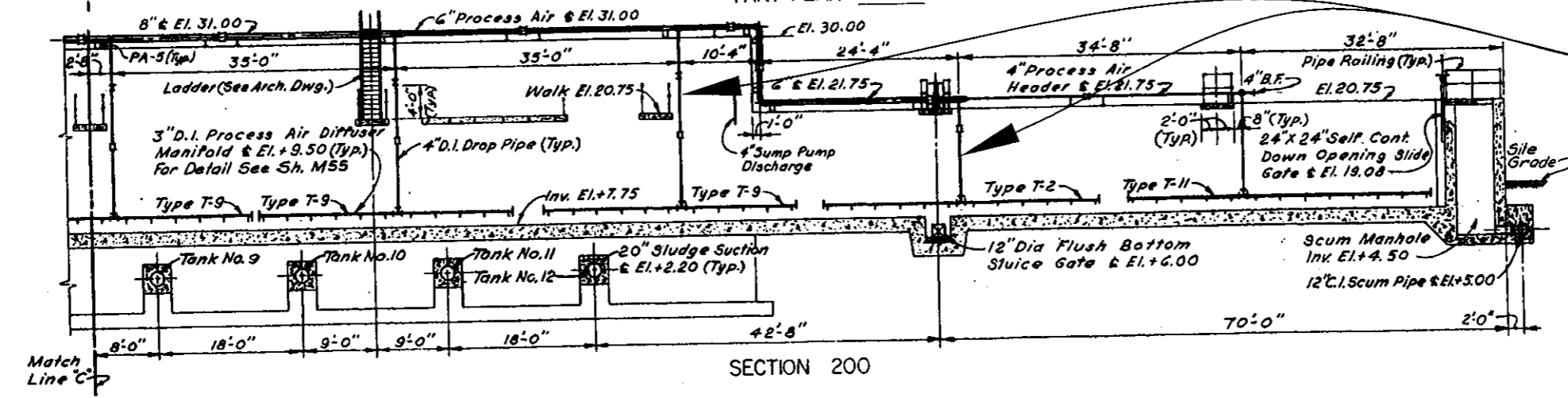
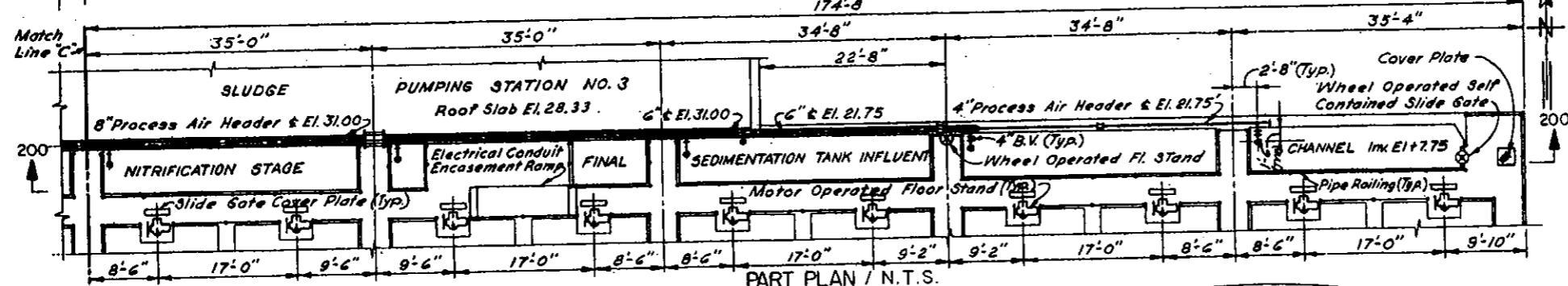
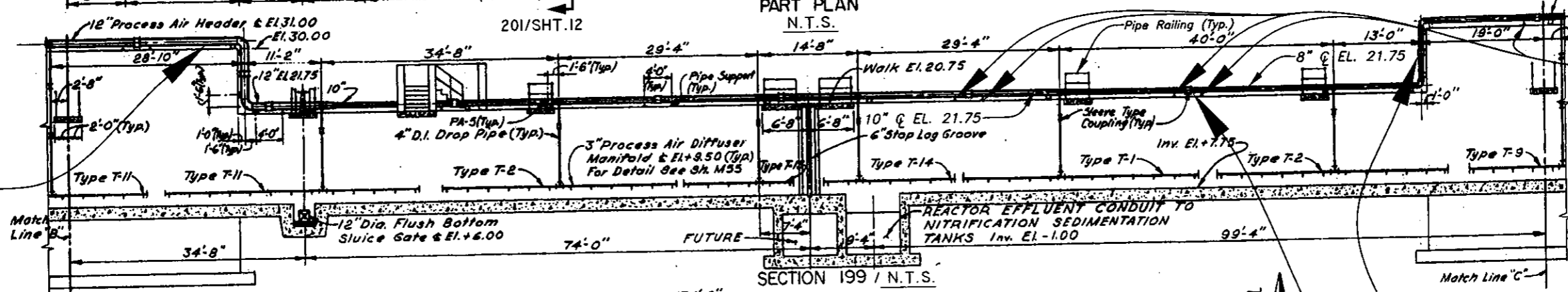
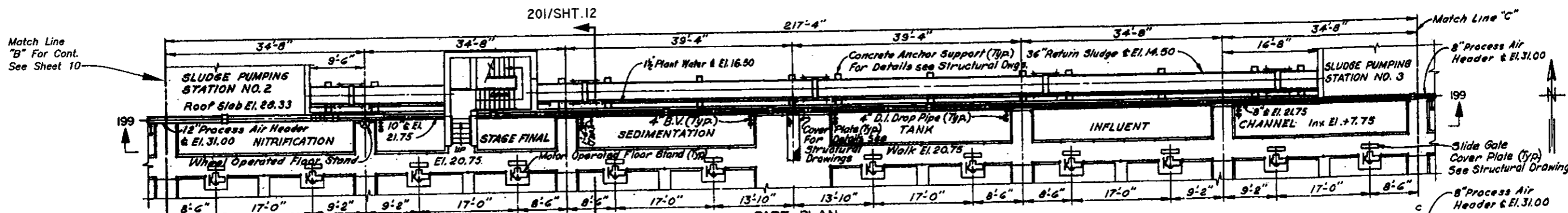
No.	DATE	REVISIONS
3		
2		
1		

DES: JH
DRN: JHJ
CKD: JF
DATE: 3/25/08

CITY of TAMPA
WASTEWATER DEPARTMENT

FINAL SEDIMENTATION TANKS REHABILITATION,
PHASE I
INFLUENT CHANNEL AIR PIPING PLAN & SECTION (I)

User: SS13 Drawing Name: C:\Program Files\Land Desktop 2004\DWG\BUMP STATION\HFCANT Old Final Tanks 4011\Old Final Tanks 1-5-Cross Collector Reh.dwg Layout- Mar 20, 2008 - 3:01pm



CLEAN, PREPARE AND PAINT EXISTING PROCESS AIR HEADER PIPING DOWNSTREAM OF 12" BLOCK VALVE

REPLACE ALL STANCHION SADDLE SUPPORTS UNDER AIR PIPE HEADER DOWNSTREAM OF 12" BLOCK VALVE WITH STAINLESS STEEL STANCHIONS OF SIMILAR CONSTRUCTION AND EPDM PAD.

REPLACE EXISTING DRESSER-TYPE COUPLINGS IN AIR PIPING HEADER WITH STAINLESS STEEL REPAIR SLEEVES (TYP.) (SEE TABLE 1, SHT. 15)

REPLACE 4" AIR PIPING, VALVES AND SUPPORT BRACKETS BETWEEN FLANGES AT AIR PIPING HEADER AND DIFFUSERS (AT TANKS 7 THRU 12)(TYP. OF 12)

NOTE 1: See sheet 13 for details of drop pipe replacement system.

No.	DATE	REVISIONS
3		
2		
1		

DES: JH
DRN: JHJ
CKD: JF
DATE: 3/25/08

CITY of TAMPA
WASTEWATER DEPARTMENT

FINAL SEDIMENTATION TANKS REHABILITATION, PHASE I
INFLUENT CHANNEL AIR PIPING PLAN & SECTION (2)

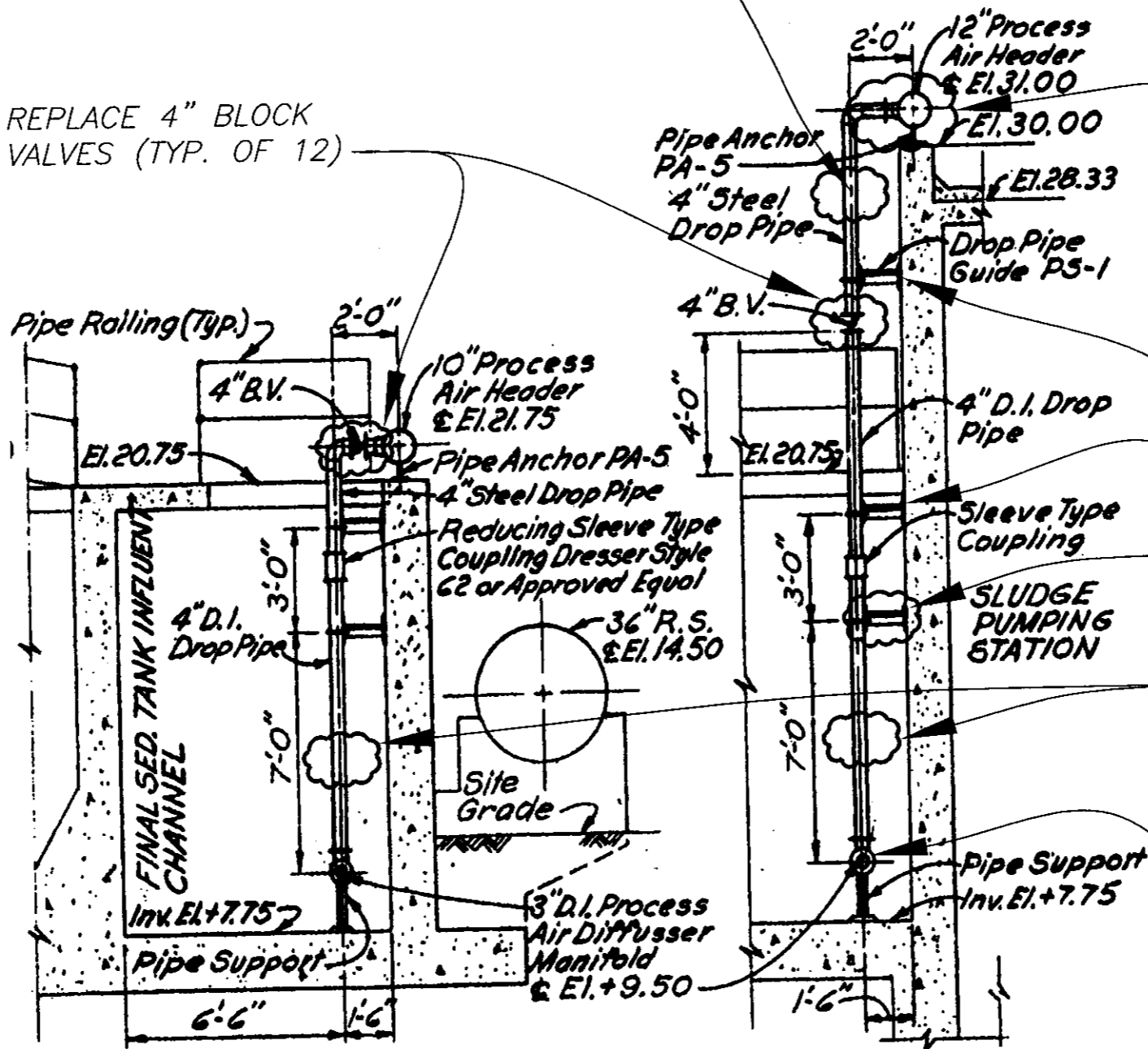
W.D. 4011
SHEET
11

User: 5513 Drawing Name: C:\Program Files\Land Desktop 2004\DWG\DCU\PUMP STATION\HFC\AWT Old Final Tanks 40110 Old Final Tanks 1-6_Cross Collector Reh.dwg Layout: Mar 20, 2008 - 3:44pm

REPLACE 4" PIPING BETWEEN
4" BLOCK VALVE AND FLANGE
AT HEADER PIPE (TYP. OF 4)

REPLACE 4" BLOCK
VALVES (TYP. OF 12)

CLEAN & PAINT EXISTING AIR HEADER
PIPING (AND ANCHORS) BETWEEN 12"
BLOCK VALVE AND 4" DROP PIPES



REPLACE WALL BRACKETS
WITH ASSOCIATED PIPING
(TYP. ALL DROP PIPES)

REPLACE 4" AIR PIPING
BETWEEN 4" BLOCK VALVES
AND 3" AIR DIFFUSERS
(TYP. OF 12)

EXISTING 3" DIFFUSER TO
REMAIN (TYP.)

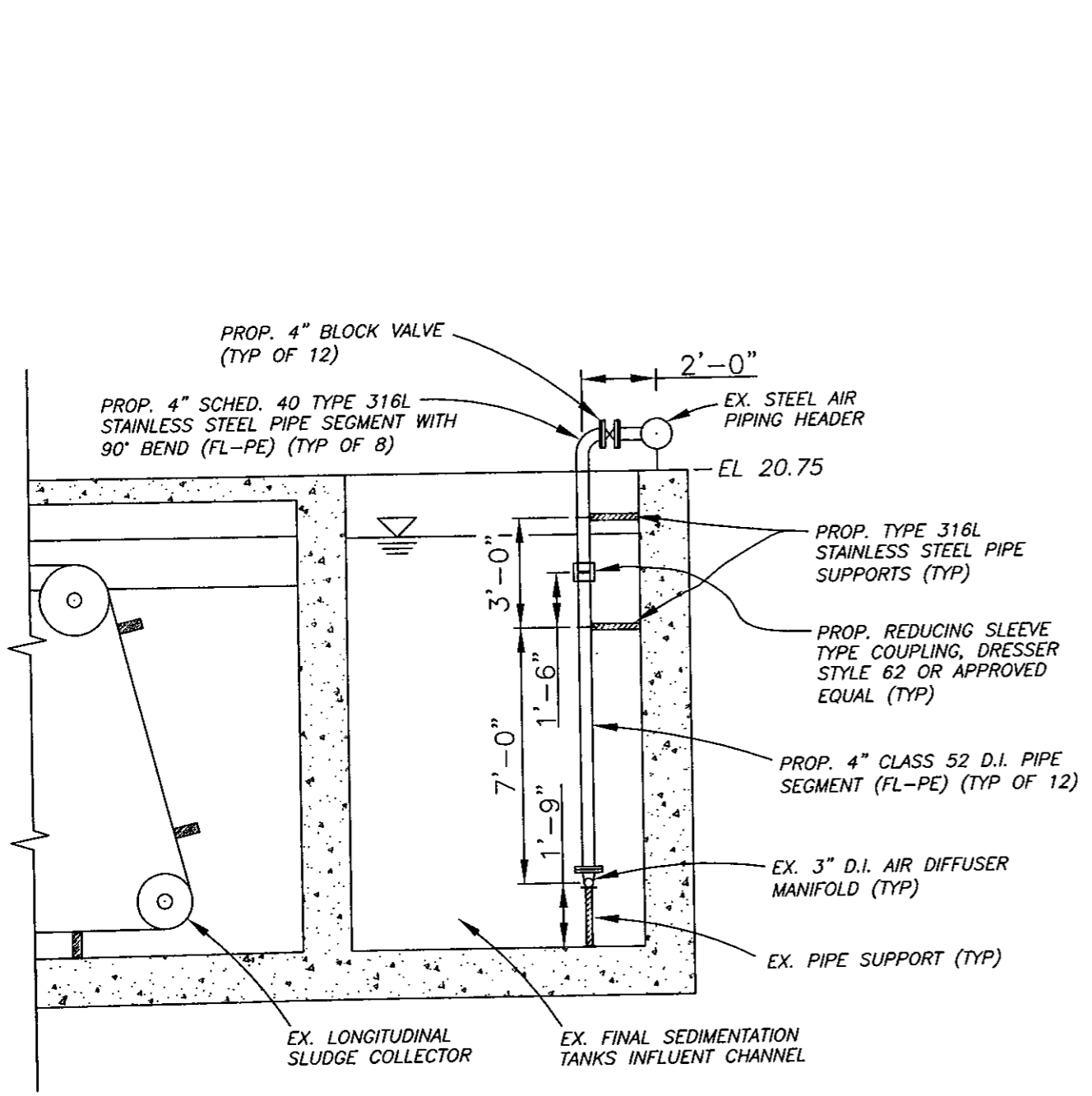
SECTION 201/SHT. II SECTION 202/SHT. 10

NOTE 1: See sheet 13 for details
of drop pipe replacement
system.

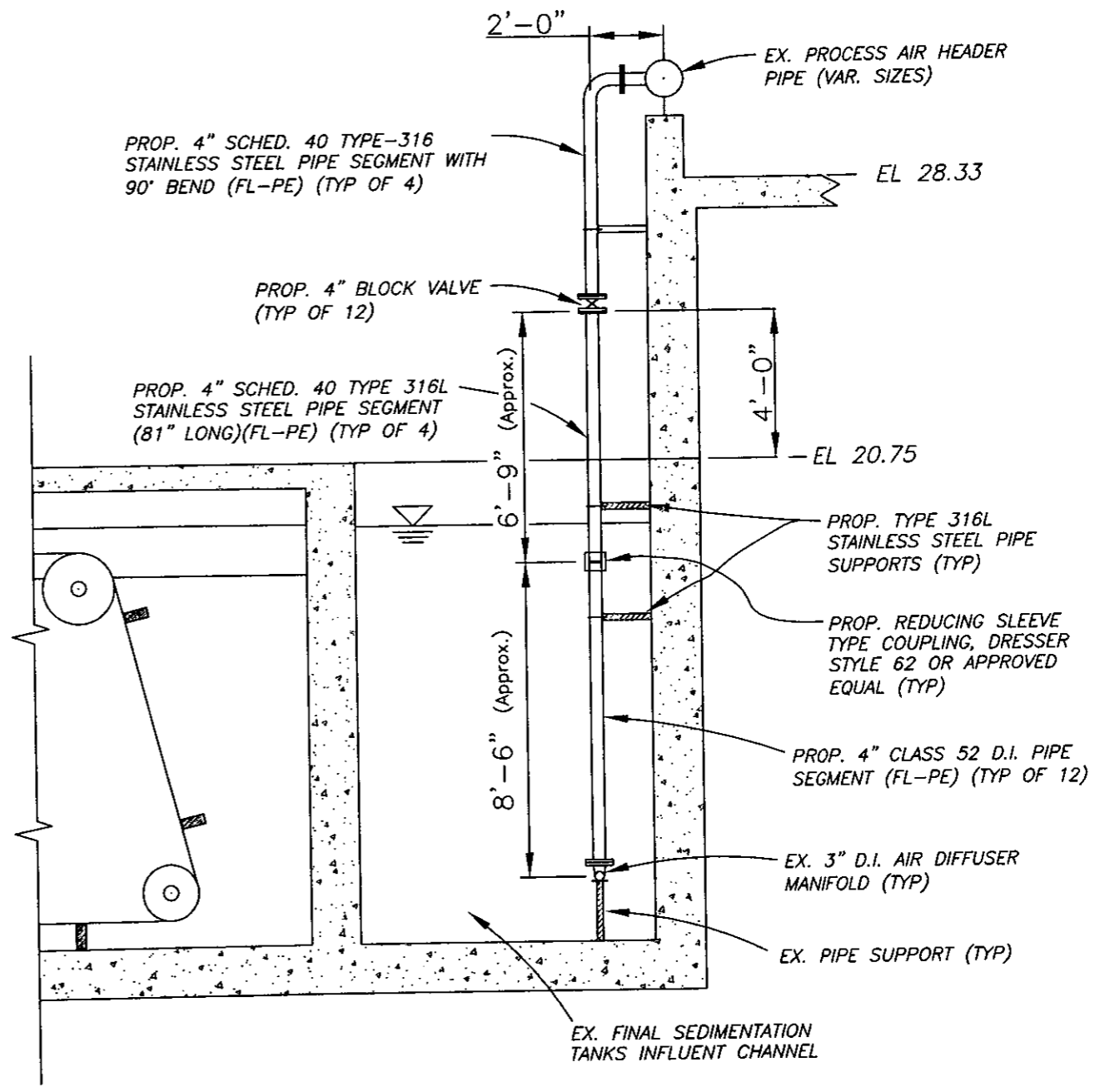
NOTE 2: See sheet 14 for details
of existing pipe supports

JACINTO CARLOS FERRAS, PE #49454 DESIGN DIVISION HEAD WASTEWATER DEPARTMENT	No.	DATE	REVISIONS	DES: JH	CITY of TAMPA WASTEWATER DEPARTMENT	FINAL SEDIMENTATION TANKS REHABILITATION, PHASE I AIR PIPING DROP-PIPE SECTIONS	W.D. 4011 SHEET 12
	3			DRN: JHJ			
	2			CKD: JF			
	1			DATE: 3/25/08			

User: SS13 Drawing Name: C:\Program Files\Land Desktop 2004\DWG\DWG\PUMP STATION\HFC\AWT Old Final Tanks 1-6-Cross Collector Reh.dwg
 Layout: Mar 20, 2008 - 3:53pm



SECTION 201 (PROPOSED) / SHT. 11
Not To Scale



SECTION 202 (PROPOSED) / SHT. 10
Not To Scale

PLOT

FILENAME

JACINTO CARLOS FERRAS, P.E. #49454
DESIGN DIVISION HEAD
WASTEWATER DEPARTMENT

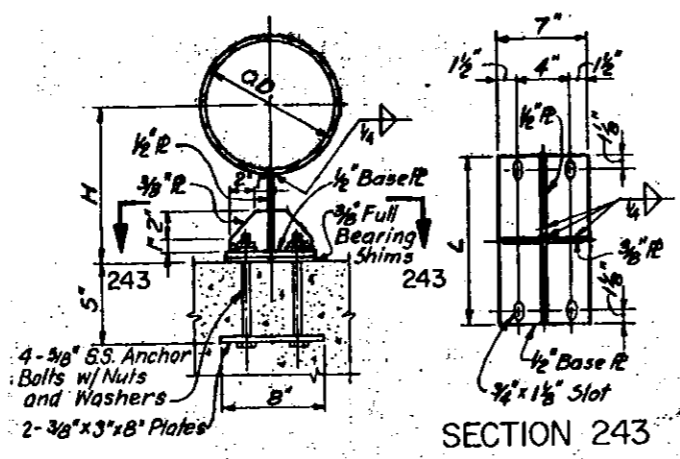
No.	DATE	REVISIONS
3		
2		
1		

DES: J.H.
DRN: J.H.
CKD: JF
DATE: 3/25/08

CITY of TAMPA
HOWARD F. CURREN
ADVANCED WASTEWATER TREATMENT PLANT

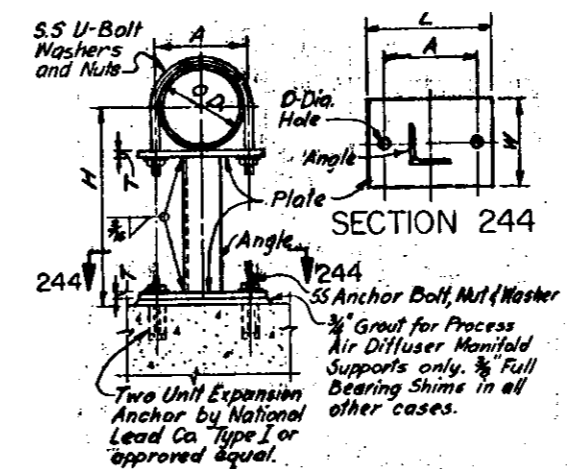
FINAL SEDIMENTATION TANKS REHABILITATION,
PHASE I
DROP PIPE REPLACEMENT SYSTEMS

W.O. 4011
SHEET
13



PIPE ANCHOR PA-5

PA-5 SCHEDULE					
Pipe O.D.	H	L	Pipe O.D.	H	L
4.500	1'-0"	6'	6.625	11"	6'
	1'-1"	6'		1'-0"	6'
	1'-9"	6'	8.625	11"	8'
5.563	11 1/2"	6'		1'-0"	8'
	1'-0"	6'	10.750	1'-0"	1'-1"
	1'-0 1/2"	6'	12.750	1'-0"	1'-3"



PIPE SUPPORT PS-1

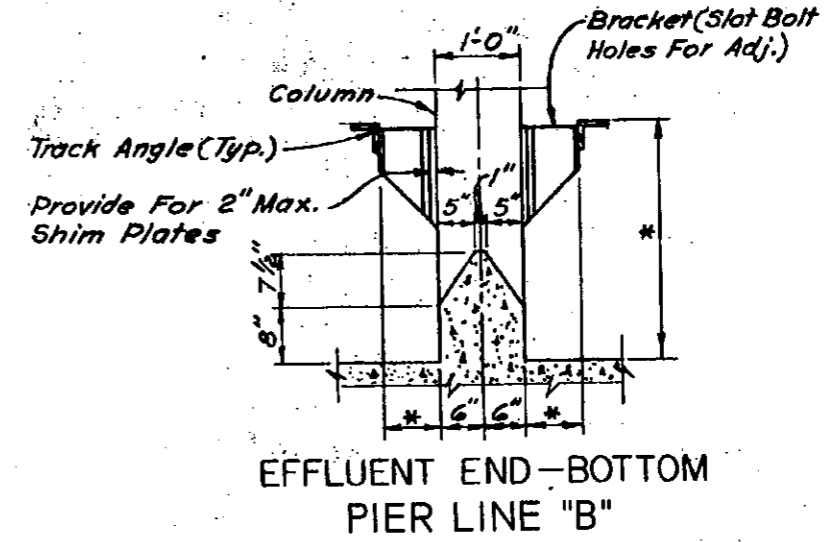
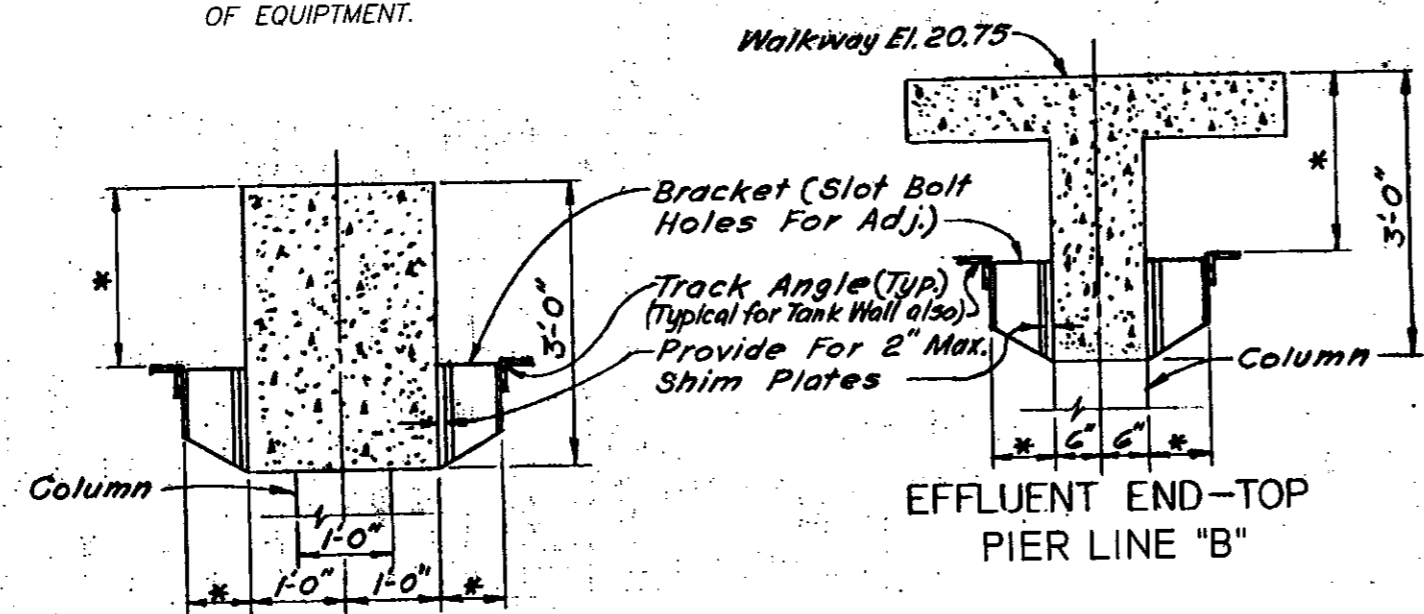
PS-1 SCHEDULE							
Pipe O.D.	A	H	Hole D	U-Bolt	Anchor Bolt	Angle Size	Plate Size LxWxT
2.375	2 1/2"	See Plans for	7/16"	3/8"	3/8"	1 1/2" x 1 1/2" x 1/4"	5" x 4" x 1/4"
3.50	4 1/2"	for Pipeline & El. Location	9/16"	1/2"	1/2"	2 1/2" x 2 1/2" x 1/4"	6" x 4" x 1/4"
3.98	5 1/2"		9/16"	1/2"	1/2"	2 1/2" x 2 1/2" x 1/4"	6" x 4" x 1/4"
4.50	5 1/2"		9/16"	1/2"	1/2"	3" x 3" x 1/4"	8" x 6" x 1/4"
4.80	5 1/2"		9/16"	1/2"	1/2"	3" x 3" x 1/4"	8" x 6" x 1/4"
6.625	7 1/2"		1 1/8"	3/4"	3/4"	3 1/2" x 3 1/2" x 1/4"	10" x 8" x 1/4"
8.625	9 1/2"		1 1/8"	3/4"	3/4"	4" x 4" x 1/4"	12" x 8" x 1/4"

NOTE: EXISTING BRACKET DETAILS ARE SHOWN FOR GENERAL INFORMATION PURPOSES ONLY.

CONTRACTOR SHALL FIELD MEASURE ALL DIMENSIONS NECESSARY FOR PROPOSED EQUIPMENT, SHOP DRAWINGS AND SUBMITTALS.

DETAIL "A" - EXISTING PIPE SUPPORTS

NOTE: * INDICATES DIMENSIONS TO BE DETERMINED AFTER SELECTION OF EQUIPMENT.



DETAIL "B" - EXISTING FLIGHT GUIDE RAIL SUPPORTS

INFLUENT END AND EFFLUENT END PIER LINE "A" & INFLUENT END PIER LINE "B"

No.	DATE	REVISIONS
3		
2		
1		

DES: JH
DRN: JHJ
CKD: JF
DATE: 3/25/08

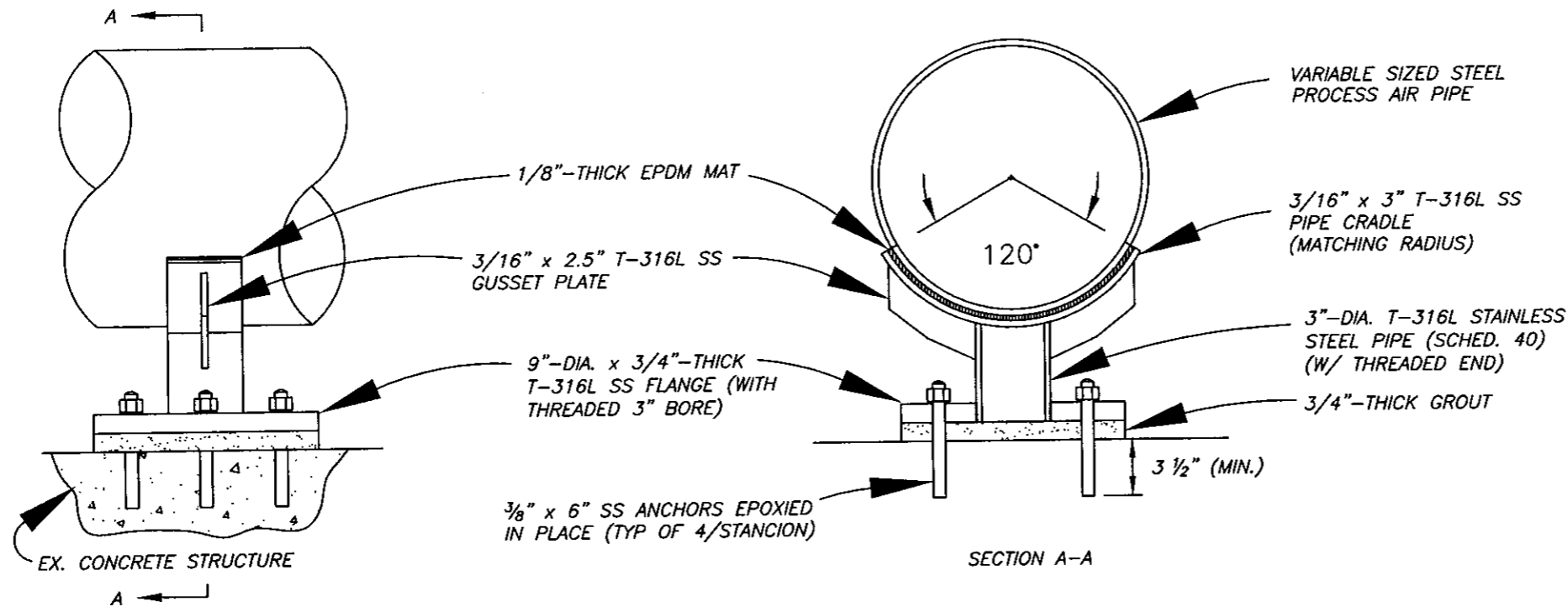
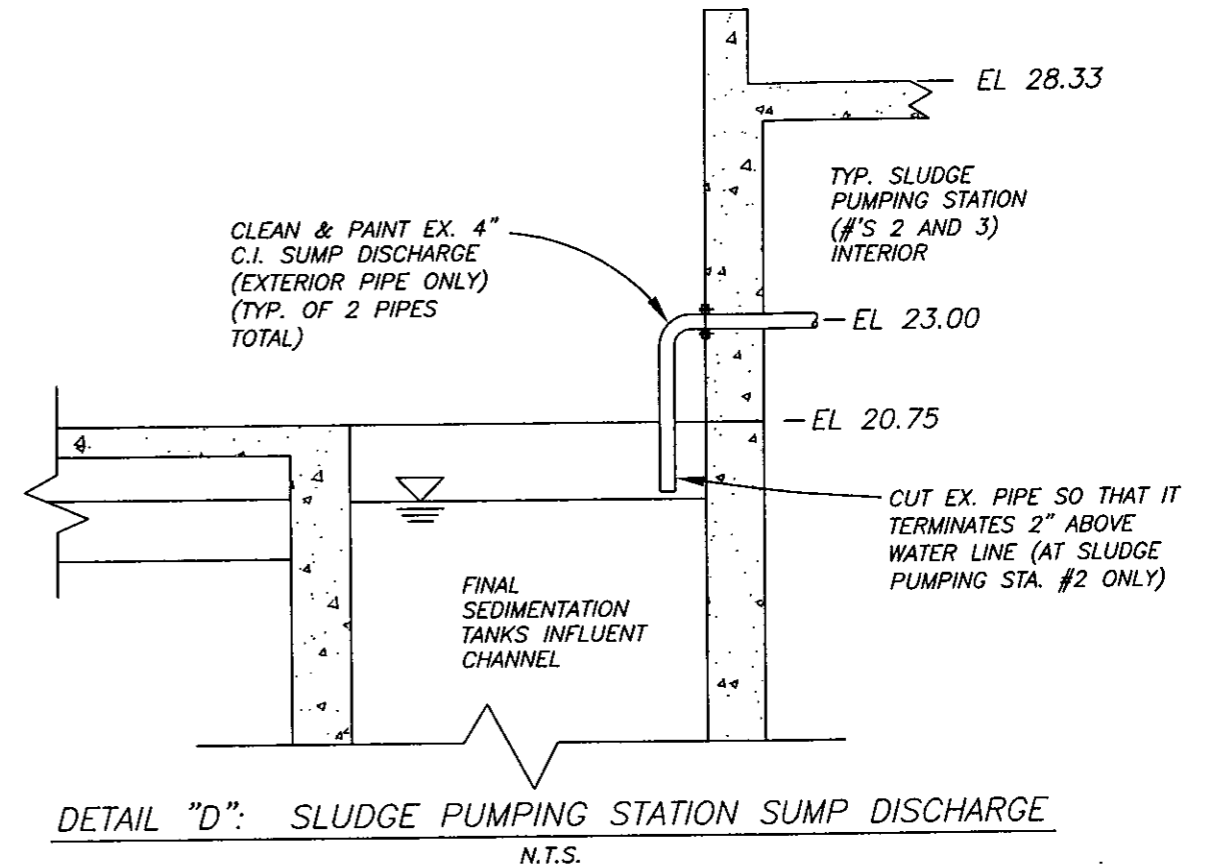
CITY of TAMPA
WASTEWATER DEPARTMENT

FINAL SEDIMENTATION TANKS REHABILITATION,
PHASE I
EXISTING BRACKET DETAILS

User: SS13 Drawing Name: C:\Program Files\Land Desktop 2004\DWG\PUMP STATION\HFCAMT Old Final Tanks 4011\Old Final Tanks 1-6_Cross Collector Reh.dwg Layout: Mar 20, 2008 - 4:24pm

EXISTING PIPE DIAMETER	REQ'D # OF REPAIR SLEEVES	LENGTH OF REPAIR SLEEVE	REQ'D # OF STANCION SUPPORTS
4"	1	12.5"	2
6"	1	12.5"	4
8"	4	15"	5
10"	4	18"	7
12"	5	20"	3

TABLE "A": AIR PIPING REPAIR SLEEVES AND SUPPORTS SCHEDULE



DETAIL "C": PROPOSED AIR PIPING STANCION SUPPORTS
N.T.S.

PLOT

FILENAME