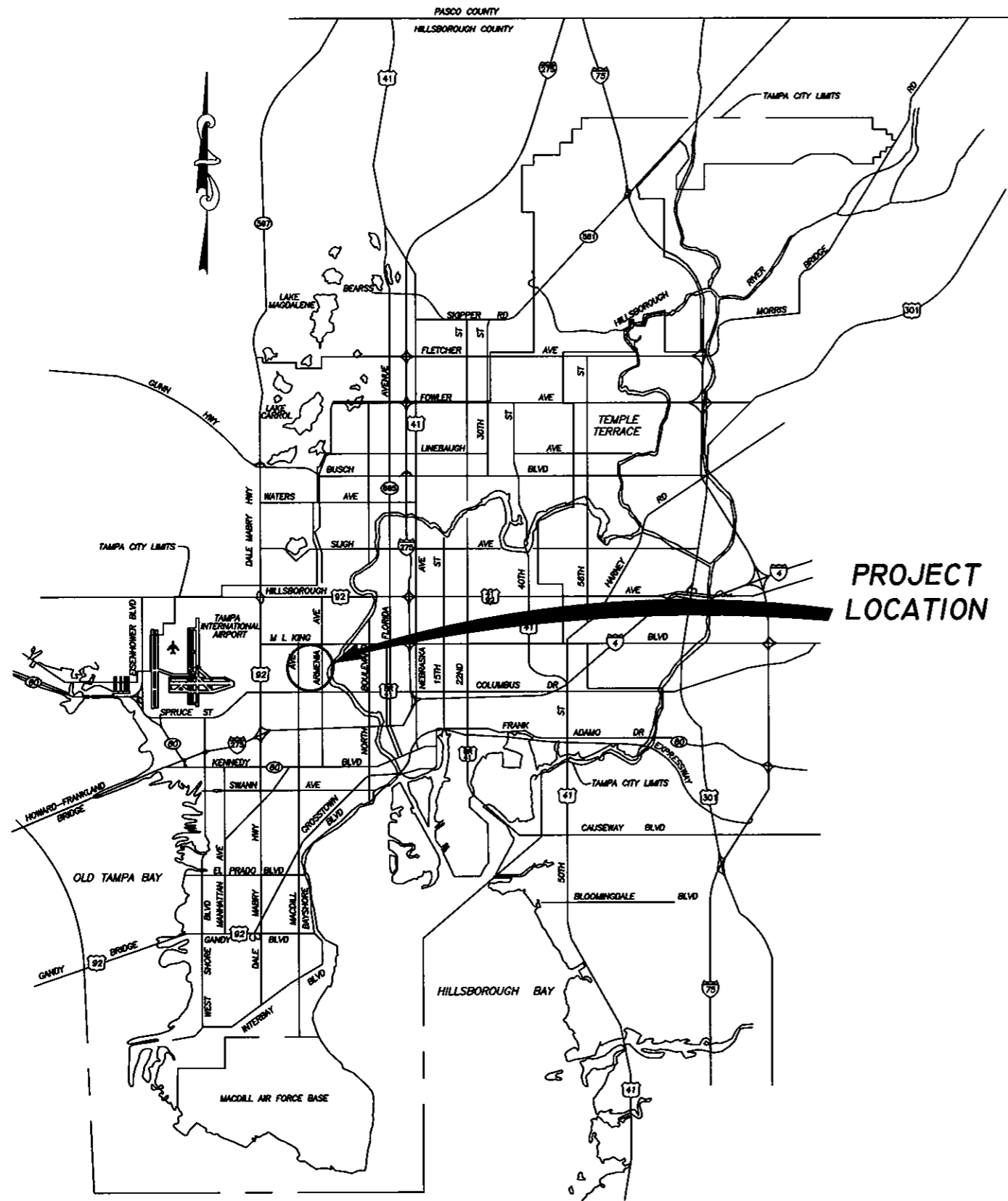


LOCATION MAP

SW



PROJECT
LOCATION

CITY of TAMPA



STORMWATER DEPARTMENT

PLANS FOR
TAMPA BAY BOULEVARD
STORMWATER IMPROVEMENTS
CONTRACT No. 08-C-00031

Richard Alfred Hoel
RICHARD ALFRED HOEL, P.E. #41026
DESIGN DIVISION HEAD
STORMWATER DEPARTMENT

DES: AD	No.	DATE	REVISIONS
DRN: MP	3		
CKD: RAH	2		
DATE: 5/14/08	1		

CITY of TAMPA
STORMWATER DEPARTMENT

COVER SHEET

W.O. 5581
SHEET
1
OF 11

LEGEND

EX SEWERS	UP to 24" & SMALLER	24" & LARGER
EX FORCE MAIN		
EX SAN SEWER & MANHOLES		
EX STORM SEWER & MANHOLES		
PROP SEWERS	UP to 18" & SMALLER	18" & LARGER
PROP FORCE MAIN		
PROP SANITARY SEWER & MANHOLES		
PROP STORM SEWER & MANHOLES		
OTHER FEATURES		
RIGHT of WAY LINE		
EDGE of PAVEMENT		
WATER LINE		
GAS LINE		
ELECTRICAL CABLE or DUCT		
TELEPHONE CABLE or DUCT		
TV CABLE		
VALVE		
HYDRANT		
CATCH BASIN, GRATE		
POWER POLE		
TELEPHONE POLE		
GUY POLE		
GUY WIRE		
VALVE VAULT		
WATER METER		
ELECTRICAL MANHOLE or VAULT		
TELEPHONE MANHOLE or VAULT		
TRAFFIC BOX or VAULT		
BUILDING LIMIT		
PROPERTY OWNERSHIP		
FENCE		
CONIFER		
PALM		
OAK		
OTHER		
SHRUB		
HEDGE		
RAILROAD TRACKS		
IRON PIPE		
CONCRETE MONUMENT		
OPEN DITCHES		
EXISTING WYE		
PROPOSED WYE		
CLEAN OUT		

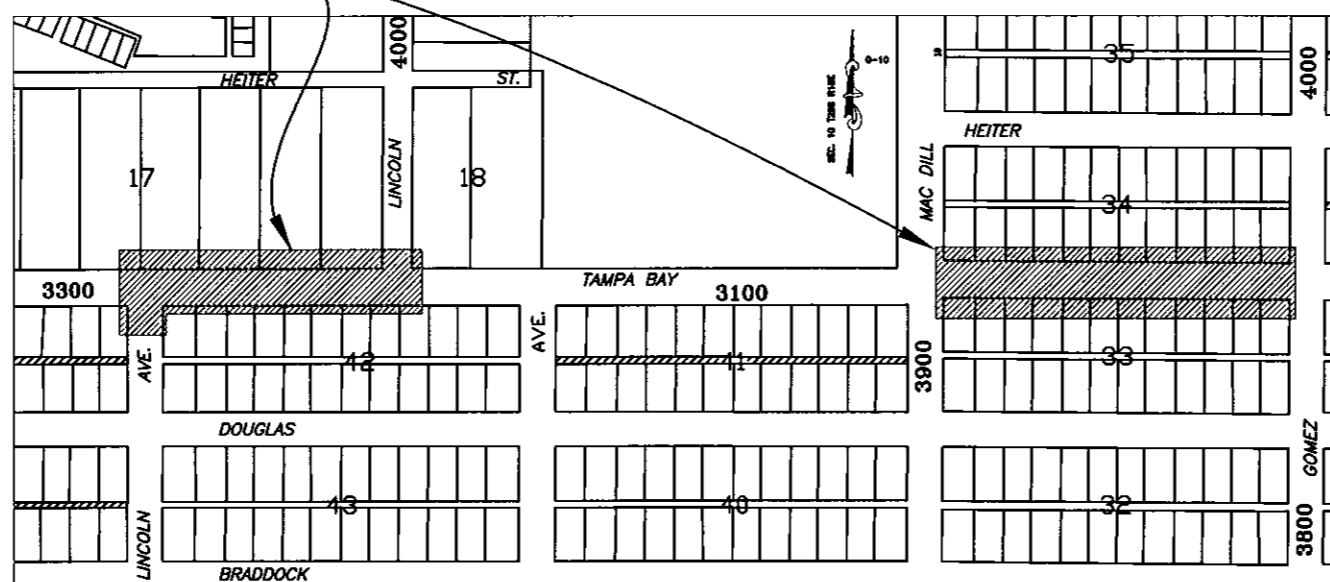
ABBREVIATIONS

TOP of PIPE	TP
INVERT ELEVATION	IE or INV EL
RIGHT of WAY	R/W
MANHOLE	MH or MH
POLYVINYL CHLORIDE PIPE	PVCP
VITRIFIED CLAY PIPE	VCP
ADVANCED DRAINAGE SYSTEM	ADS
DUCTILE IRON PIPE	DIP
REINFORCED CONCRETE PIPE	RCP
CONCRETE PIPE	CP
APPROXIMATE LOCATION	AL
BENCH MARK	BM
POINT of INTERSECTION	PI

INDEX

No.	DESCRIPTION
1	COVER SHEET
2	LEGEND, INDEX & NOTES
3-10	PLAN AND PROFILE
11	MISCELLANEOUS DETAILS

PROPOSED STORMWATER IMPROVEMENTS



GENERAL NOTES:

- ALL ELEVATIONS ARE REFERRED TO THE MEAN SEA LEVEL DATUM OF THE U.S.C. AND G.S. (N.O.S.).
- LOCATIONS, ELEVATIONS, AND DIMENSIONS OF THE EXISTING UTILITIES, STRUCTURES, AND OTHER FEATURES ARE SHOWN ACCORDING TO THE BEST INFORMATION AVAILABLE AT THE TIME OF THE PREPARATION OF THESE PLANS BUT DO NOT PURPORT TO BE ABSOLUTELY CORRECT. THE CONTRACTOR SHALL VERIFY THE LOCATIONS, ELEVATIONS, AND DIMENSIONS, OF ALL EXISTING UTILITIES, STRUCTURES, AND OTHER FEATURES AFFECTING HIS WORK PRIOR TO CONSTRUCTION.
- EXISTING UTILITIES AND TOPOGRAPHIC INFORMATION DENOTED BY UPPER AND LOWER CASE, PROPOSED WORK DENOTED BY ALL UPPER CASE.
- THE CONTRACTOR SHALL CALL SUNSHINE (1-800-432-4770) AT LEAST 72 HOURS PRIOR TO ANY CONSTRUCTION ACTIVITIES.
- WHEN IN CONFLICT, UTILITY POLES, GAS LINES, UNDERGROUND ELECTRIC, TELEPHONE AND OTHER COMMUNICATION CABLES AND CONDUIT WILL BE RELOCATED BY THE RESPECTIVE UTILITY OWNERS AT THEIR OWN EXPENSE AS DIRECTED BY THE ENGINEER. IT IS THE CONTRACTORS RESPONSIBILITY TO COORDINATE WITH THEM.
- PRIOR TO ANY CONSTRUCTION, CONTACT TAMPA ELECTRIC COMPANY (PH 228-4714) FOR EXACT LOCATION OF UNDERGROUND LINES. TECO TO RELOCATE ANY CONFLICTING LINES.
- SPECIAL CARE MUST BE TAKEN TO PROTECT WATER MAINS, VALVE BOXES, METER & SERVICE LINES, AND HYDRANTS DURING CONSTRUCTION, IF NECESSARY PROVIDE SUPPORTS. IF PROBLEMS OCCUR, CALL TAMPA WATER DEPARTMENT TRIAGE CENTER AT 813-274-7400.
- ALL EXISTING WATER METER SERVICE LINES ALONG PROPOSED STORMWATER CONSTRUCTION SHALL BE REMOVED AND REINSTALLED. PAYMENT SHALL BE MADE SEPARATELY. WATER CUSTOMERS SHALL REMAIN IN SERVICE EXCEPT DURING SERVICE LINE TRANSFER.(FOR ENTIRE PROJECT AREA)
- STATIONS AND OFFSETS GIVEN ARE TO THE CENTER LINE OF THE INLETS AND MANHOLES, AND REFER TO THE SURVEY BASE LINES.
- THE SOLID WASTE DEPARTMENT IS TO BE NOTIFIED PRIOR TO ANY STREET CLOSURES IN THE PROJECT AREA.
- TREE REMOVAL CONTRACTOR IS RESPONSIBLE FOR OBTAINING SITE CLEARING PERMIT PRIOR TO START OF ANY CONSTRUCTION.
- NECESSARY ROOT PRUNING AND TRIMMING OF BRANCHES SHALL BE DONE BY A LICENSED TREE CONTRACTOR.
- SOD ALL THE DISTURBED AREAS AS DIRECTED BY THE ENGINEER.
- WHERE CONNECTIONS TO EXISTING WALKS AND DRIVES ARE NOT INDICATED ON THE PLANS, PROPER CONNECTIONS SHALL BE MADE AT THE DIRECTION OF THE ENGINEER.
- STREET SIGNS, STREET MARKERS AND R-O-W MARKERS SHALL BE REMOVED AND RELOCATED AS DIRECTED BY THE ENGINEER.
- DRIVEWAYS SHALL BE RECONSTRUCTED IN ACCORDANCE WITH CHAPTER 45, ARTICLE XII OF THE CITY CODE, AS AMENDED BY ORDINANCE NO. 7582-A ADOPTED MARCH 17, 1981. DEVIATION FROM ESTABLISHED STANDARDS SHALL BE APPROVED BY THE CITY TRAFFIC ENGINEER.
- THE CONTRACTOR IS RESPONSIBLE FOR COMPLIANCE WITH ALL CURRENT ENVIRONMENTAL AND PERMIT RULES AND REGULATIONS OF THE CITY, STATE (D.E.R. & SWFWMD), TAMPA PORT AUTHORITY, E.P.C. AND OTHERS.

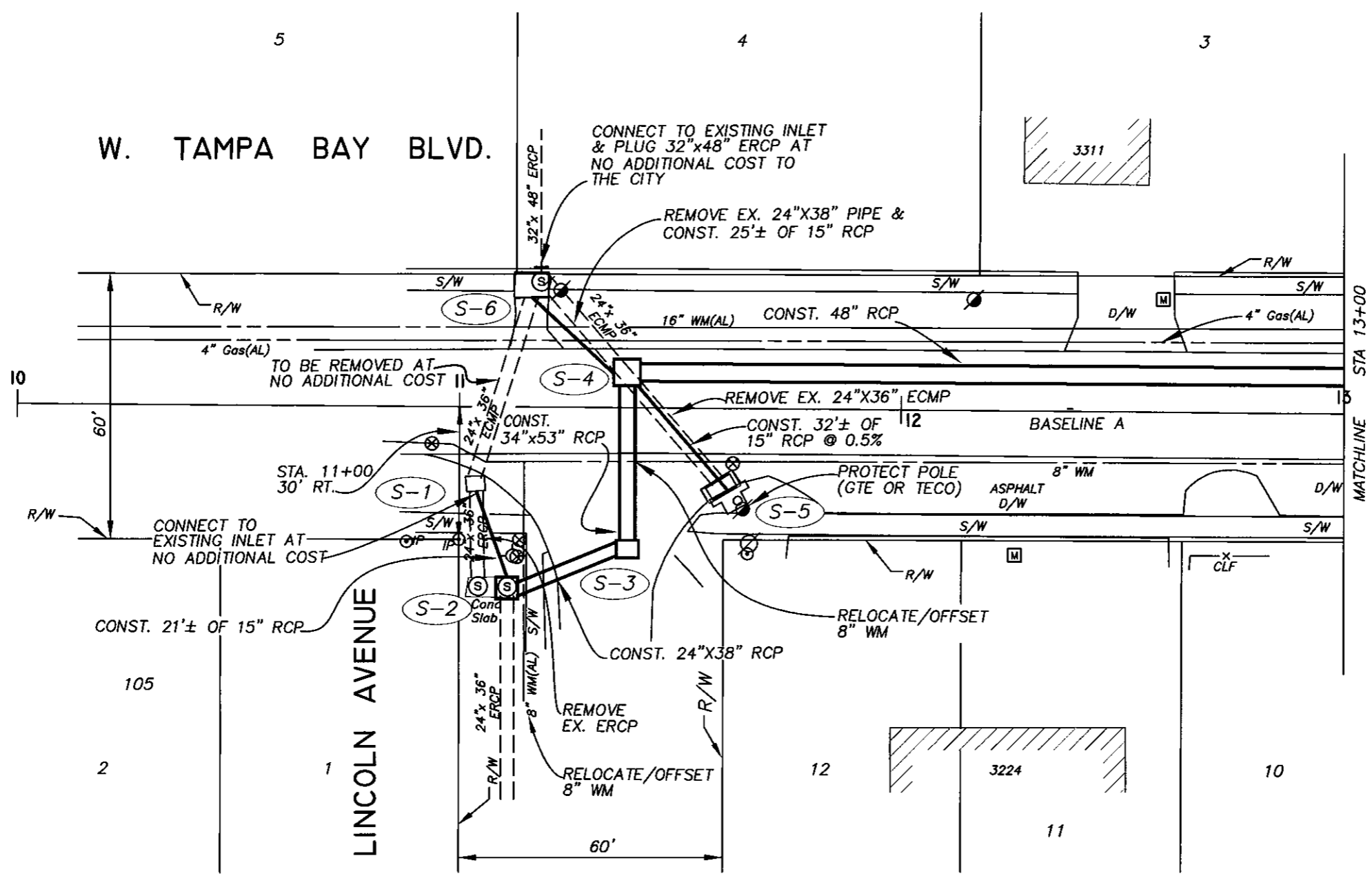
No.	DATE	REVISIONS	No.	DATE	REVISIONS
3			6		
2			5		
1			4		

DES: AD
 DRN: MR
 CKD: ROK
 DATE: 5/10/08

CITY of TAMPA
STORMWATER DEPARTMENT

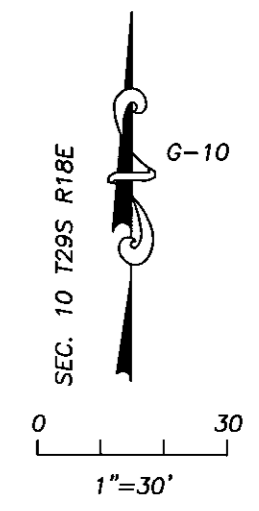
TAMPA BAY BLVD. STORMWATER IMPROVEMENTS

SW



CAP & NAIL @
 STA 11+00 AT POINT
 X=495647.1056
 Y=1323584.2745
 Z=32.6118

CAP & NAIL @
 STA 12+00 AT POINT
 X=495747.0974
 Y=1323583.4711
 Z=32.5530



(S-1) STA 11+05 19'± RT
 CONNECT TO EXISTING INLET
 INV. EL. 15" RCP (S)= 30.00

(S-2) STA 11+11 41'± RT
 CONST. STD. TYPE J MH (5'X5')
 REMOVE EXISTING MH
 CONNECT EXISTING 24"X38" ERCP
 INV. EL. (S)= 29.30
 INV. EL. 15" RCP (N)= 29.80 (VERIFY)
 INV. EL. 24"X38" RCP(E)= 28.74
 TOP EL.= 33.00±(VERIFY)

(S-3) STA 11+38, 32'± RT
 CONST. STD. TYPE J MH (7'X7')
 INV. EL. 34"x53" RCP(N) = 25.22
 INV. EL. 24"X38" RCP(W)= 28.74
 TOP EL.= 33.65±

(S-4) STA 11+38 8'± LT
 CONST. STD. TYPE J MH (7'X7')
 INV. EL. 48" RCP(E) = 25.00
 INV. EL. 34"x53" RCP(S)= 25.00
 INV. EL. 15" RCP(NW)= 28.50
 INV. EL. 15" RCP(SE)= 29.50
 TOP EL.= 32.45±

(S-5) STA 11+62 21'± RT
 CONST. STD. TYPE 1 INLET
 INV. EL. 15" RCP(NW)= 29.66
 THROAT EL. = 31.80±(VERIFY)
 EXISTING INLET TO BE REMOVED

(S-6) STA 11+16.12, 25'± LT
 CONNECT TO EXISTING INLET
 INV. EL. 15" RCP (S)= 29.00

No.	DATE	REVISIONS	No.	DATE	REVISIONS
3			6		
2			5		
1			4		

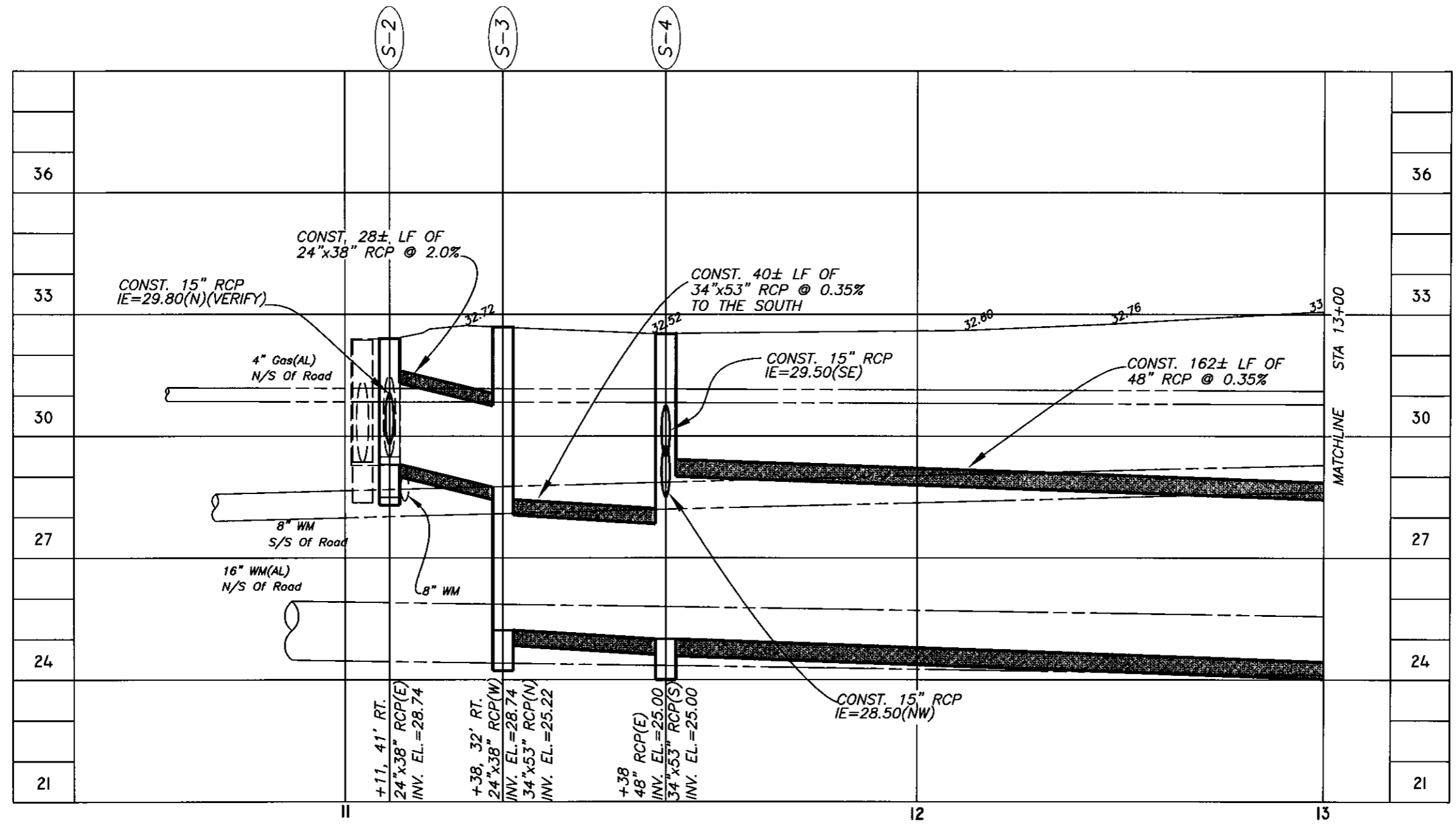
DES: AD
 DRN: MP
 CKD: *DM*
 DATE: 5/19/08

CITY of TAMPA
 STORMWATER DEPARTMENT

TAMPA BAY BLVD. STORMWATER IMPROVEMENTS
 AT LINCOLN AVENUE

W.O. 5581
 SHEET
3
 OF 11

C:\Program Files\Acad 2009\Drawings\5881(Tampa Bay Blvd)\Sh03-Sh11



BASELINE A

Scale
1"=30' Horizontal
1"=3' Vertical

C:\Program Files\Acad 2009\Drawings\5881(Tampa Bay Blvd)\Sh03-Sh11

No.	DATE	REVISIONS	No.	DATE	REVISIONS
3			6		
2			5		
1			4		

DES: AD
DRN: MP
CKD: RAA
DATE: 5/19/08

CITY of TAMPA
STORMWATER DEPARTMENT

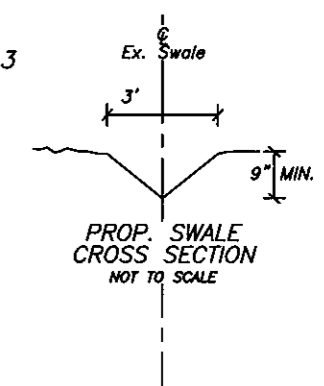
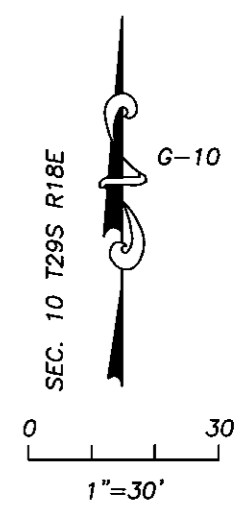
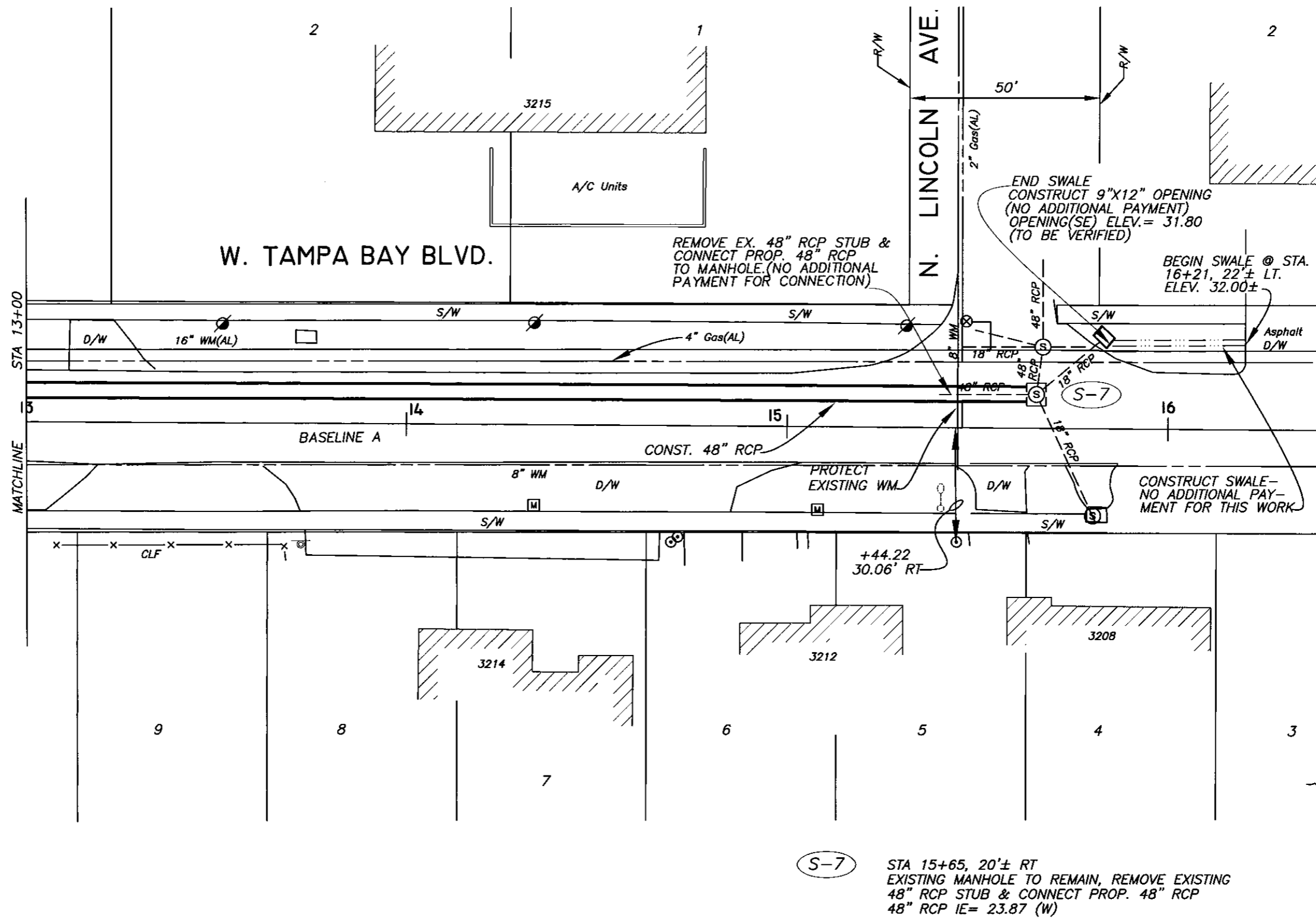
TAMPA BAY BLVD. STORMWATER IMPROVEMENTS
AT LINCOLN AVENUE

W.O. 5581
SHEET
4
OF 11

SW

CAP & NAIL @
 STA 14+00 AT POINT
 X=495947.0947
 Y=1323581.8521
 Z=33.2041

CAP & NAIL @
 STA 15+00 AT POINT
 X=496047.0782
 Y=1323581.0350
 Z=33.5100



(S-7) STA 15+65, 20'± RT
 EXISTING MANHOLE TO REMAIN, REMOVE EXISTING
 48" RCP STUB & CONNECT PROP. 48" RCP
 48" RCP IE= 23.87 (W)

C:\Program Files\Acad 2009\Drawings\5881(Tampa Bay Blvd)\Sh03-Sh11

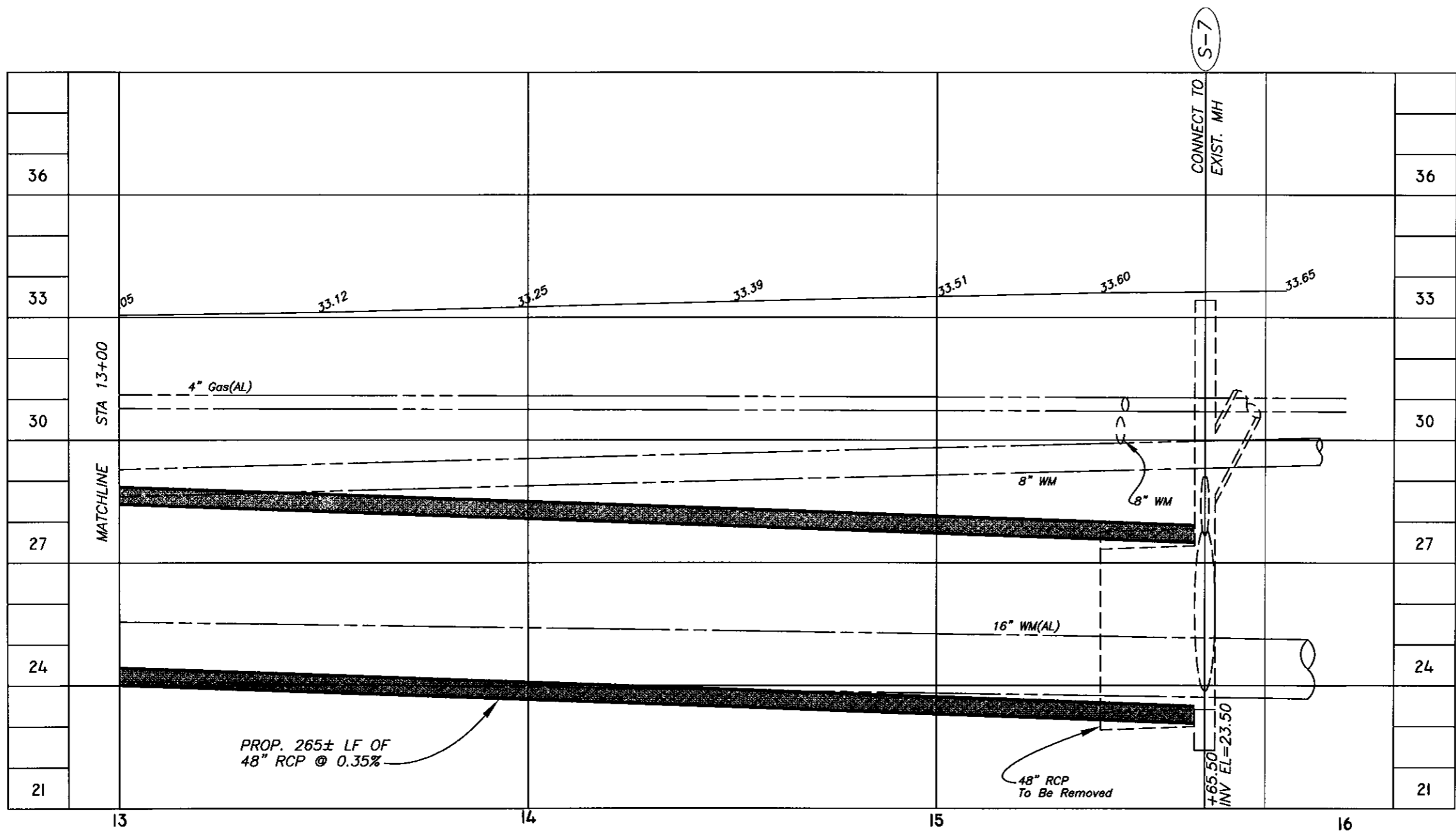
No.	DATE	REVISIONS	No.	DATE	REVISIONS
3			6		
2			5		
1			4		

DES: AD
 DRN: MP
 CKD: RAK
 DATE: 5/1/09

CITY of TAMPA
 STORMWATER DEPARTMENT

TAMPA BAY BLVD. STORMWATER IMPROVEMENTS
AT LINCOLN AVENUE

W.O. 5581
 SHEET
5
 OF 11



BASELINE A

Scale
 1"=30' Horizontal
 1"=3' Vertical

C:\Program Files\Acad 2009\Drawings\5881(Tampa Bay Blvd)\Sh03-Sh11

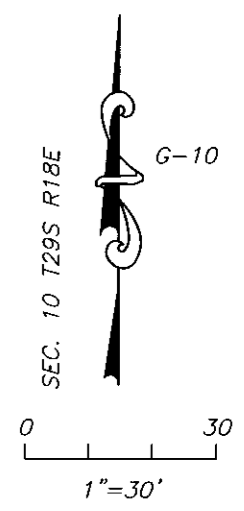
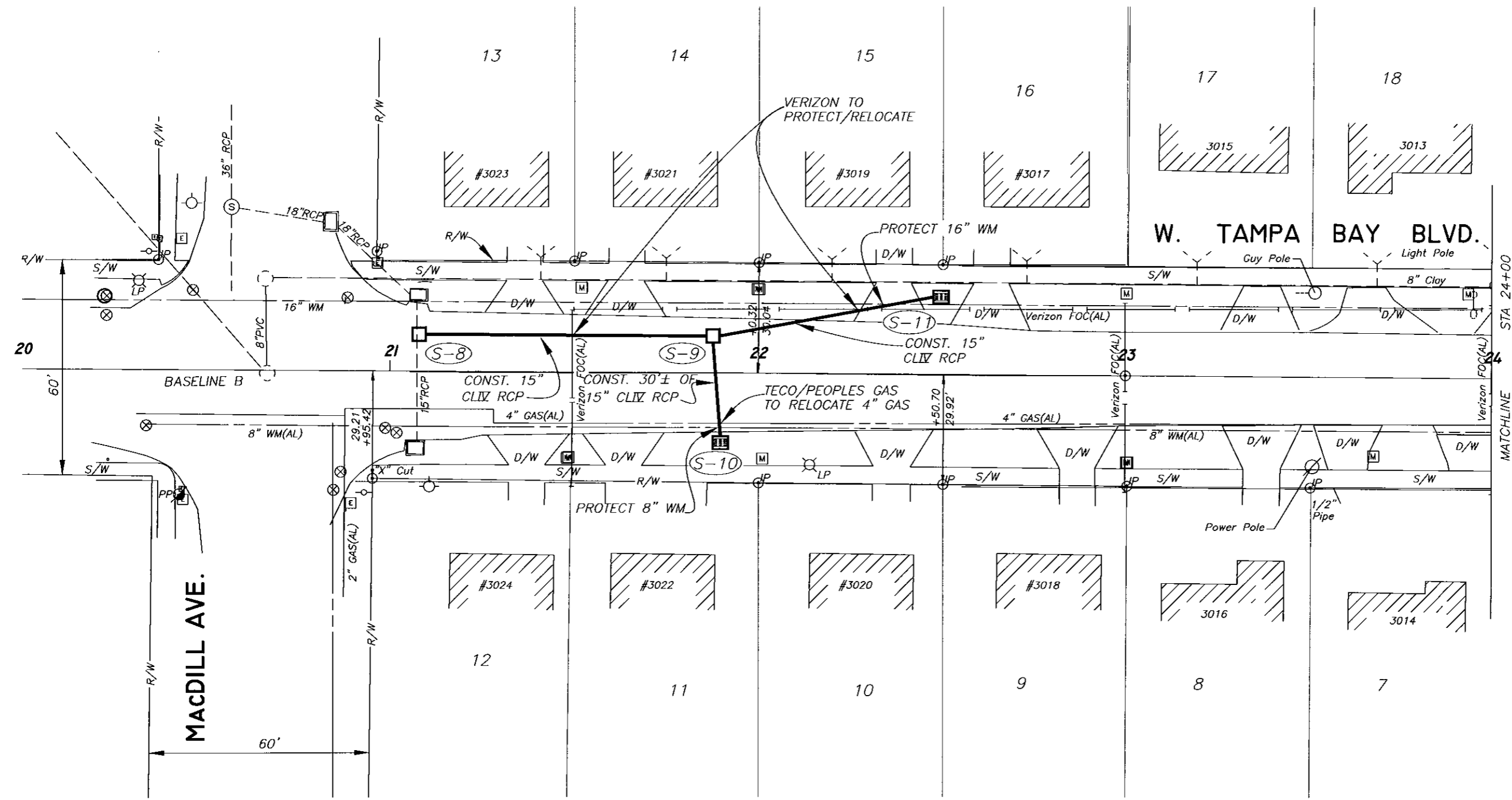
No.	DATE	REVISIONS	No.	DATE	REVISIONS
3			6		
2			5		
1			4		

DES: AD
 DRN: MP
 CKD: *[Signature]*
 DATE: 5/19/08

CITY of TAMPA
 STORMWATER DEPARTMENT

TAMPA BAY BLVD. STORMWATER IMPROVEMENTS
 AT LINCOLN AVENUE

SW



CAP & NAIL @
 STA 20+00 AT POINT
 X=496951.4032
 Y=1323578.9324
 Z=36.5862

CAP & NAIL @
 STA 23+00 AT POINT
 X=497251.3970
 Y=1323577.0043
 Z=36.5862

S-8 STA 21+08, 10'± LT
 CONST. STD. MH. TYPE P-7
 15" RCP IE= 32.67 (E)
 TOP EL.= 35.90±
 CONNECT EX. 15" RCP (N&S)
 AT NO ADDITIONAL COST TO THE CITY.

S-9 STA 21+88, 10'± LT
 CONST. STD. MH. TYPE P-7
 15" RCP IE= 32.83(ALL PIPES)
 TOP EL.= 35.90±

S-10 STA 21+90, 21'± RT
 CONST. STD. TYPE T INLET
 15" RCP IE= 33.00(N)
 GRATE ELEVATION= 35.00
 6"x12" OPENING= 34.50(S)

S-11 STA 22+50, 21'± LT
 CONST. STD. TYPE T INLET
 15" RCP IE= 32.97(W)
 GRATE ELEVATION= 35.25

C:\Program Files\Acad 2009\Drawings\5881(Tampa Bay Blvd)\Sh03-Sh11

No.	DATE	REVISIONS	No.	DATE	REVISIONS
3			6		
2			5		
1			4		

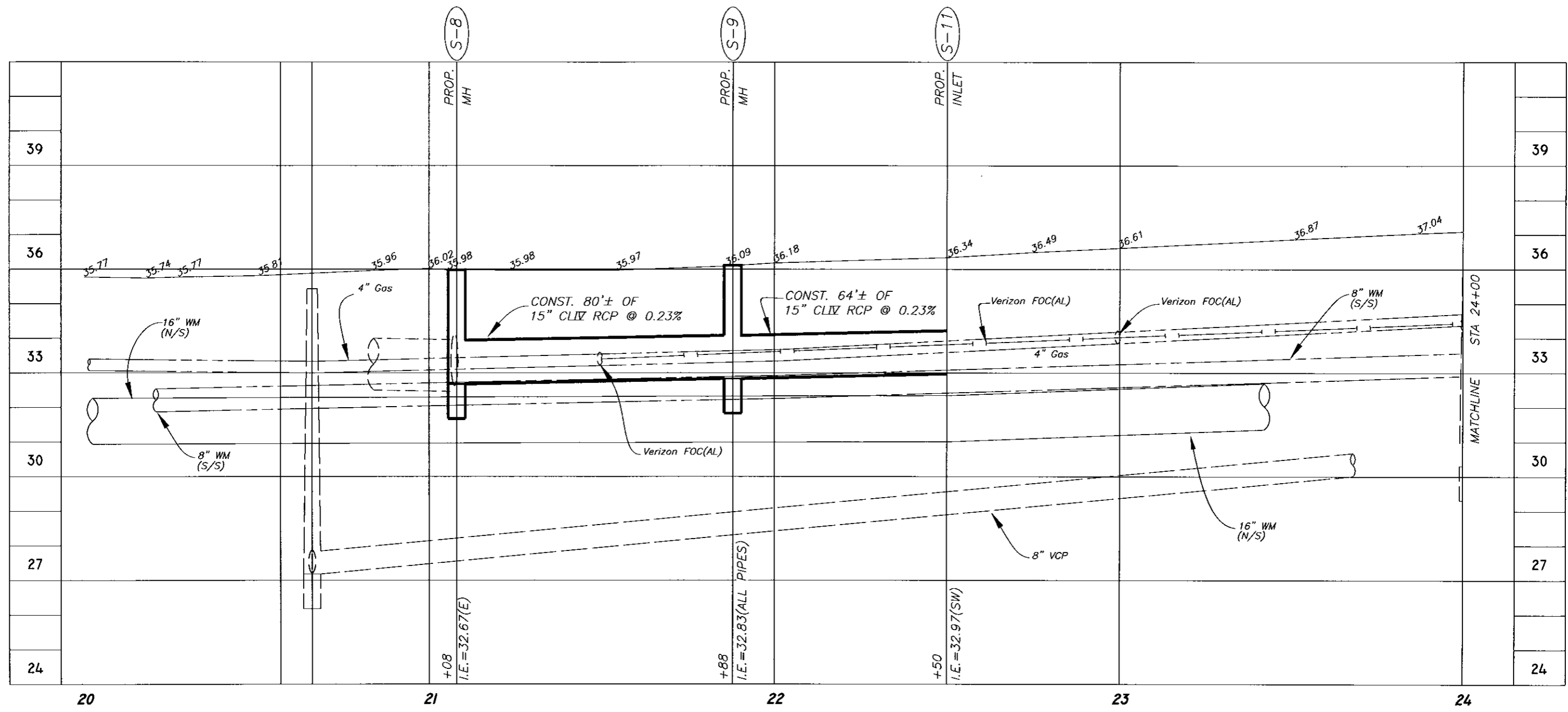
DES: AD
 DRN: MP
 CKD: RAH
 DATE: 5-24-08

CITY of TAMPA
 STORMWATER DEPARTMENT

TAMPA BAY BLVD. STORMWATER IMPROVEMENTS
FROM MACDILL AVE. TO GOMEZ AVE.

W.O. 5581
 SHEET
7
 OF 11

SW



BASELINE B

Scale
 1"=30' Horizontal
 1"=3' Vertical

C:\Program Files\Acad 2009\Drawings\5881(Tampa Bay Blvd)\Sh03-Sh11

No.	DATE	REVISIONS	No.	DATE	REVISIONS
3			6		
2			5		
1			4		

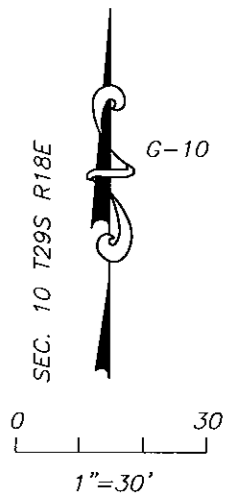
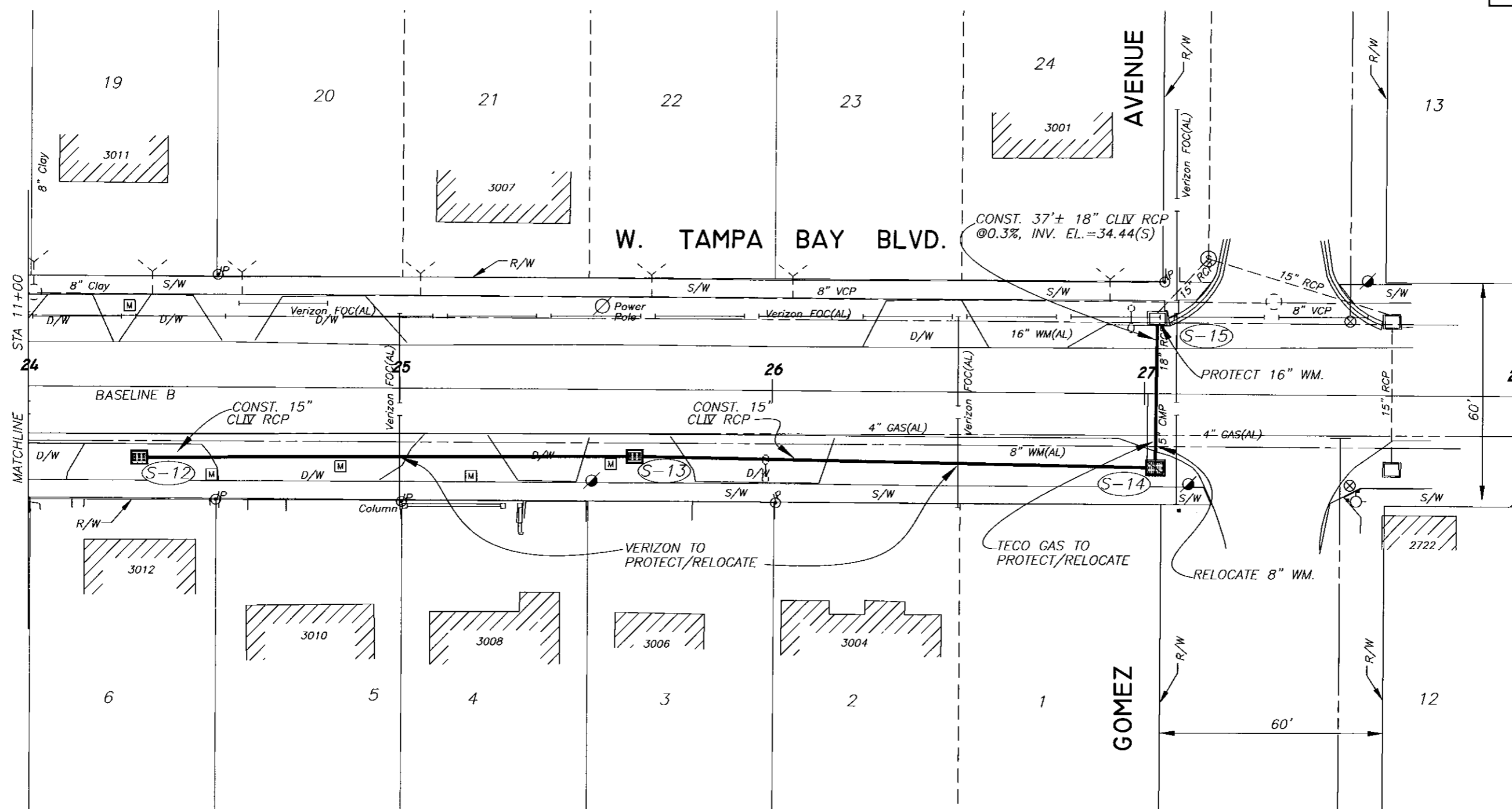
DES: AD
 DRN: MP
 CKD: R.A.H.
 DATE: 5-24-08

CITY of TAMPA
 STORMWATER DEPARTMENT

TAMPA BAY BLVD. STORMWATER IMPROVEMENTS
 FROM MACDILL AVE. TO GOMEZ AVE.

W.O. 5581
 SHEET
8
 OF 11

SW



CAP & NAIL @
 STA 26+00 AT POINT
 X=497551.3635
 Y=1323575.0692
 Z=37.9109

CAP & NAIL @
 STA 27+00 AT POINT
 X=497651.3498
 Y=1323574.4337
 Z=37.9550

(S-12) STA 24+30, 19'± RT
 PROP. STD. TYPE T INLET
 15" RCP IE= 35.24 (E)
 GRATE ELEVATION= 36.95
 6"x12" OPENING (N)= 36.45

(S-13) STA 25+63, 18'± RT
 PROP. STD. TYPE T INLET
 15" RCP IE= 34.95 (W)
 15" RCP IE= 34.95 (E)
 GRATE ELEVATION= 36.70
 6"x12" OPENING (N)= 36.20

(S-14) STA 27+03, 20'± RT
 REMOVE EXISTING INLET
 CONST. STD. TYPE E INLET
 15" RCP IE= 34.60 (W)
 18" RCP IE= 34.60 (N)
 GRATE ELEVATION= 36.70

(S-15) STA 27+03, 19'± LT
 REMOVE EX. 18" RCP/15" CMP
 & CONNECT PROP. 18" RCP TO EX. INLET
 18" RCP IE= 34.40 (S)

C:\Program Files\Acad 2009\Drawings\5881(Tampa Bay Blvd)\Sh03-Sh11

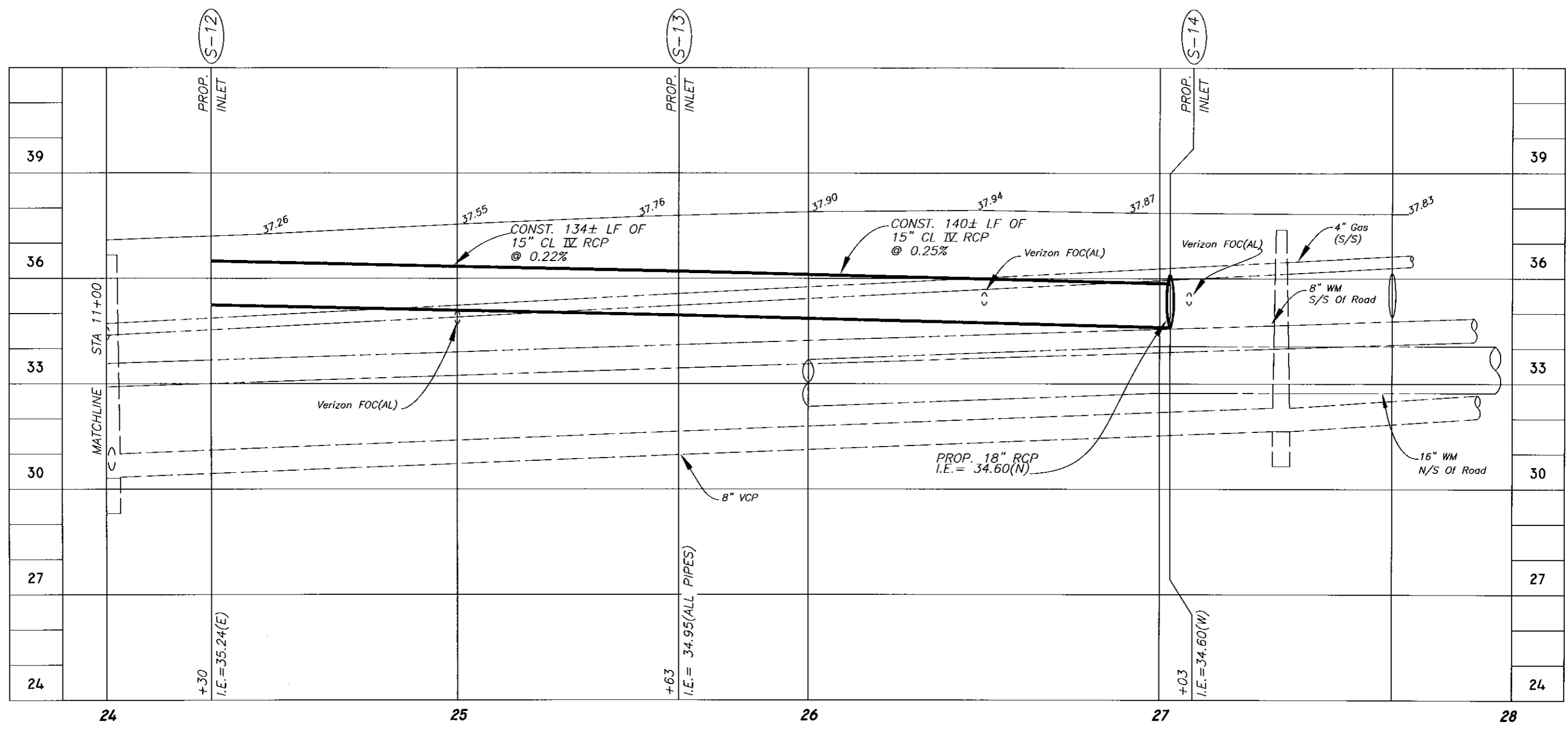
No.	DATE	REVISIONS	No.	DATE	REVISIONS
3			6		
2			5		
1			4		

DES: AD
 DRN: MP
 CKD: RAH
 DATE: 5-24-09

CITY of TAMPA
 STORMWATER DEPARTMENT

TAMPA BAY BLVD. STORMWATER IMPROVEMENTS
 FROM MACDILL AVE. TO GOMEZ AVE.

W.O. 5581
 SHEET
 9
 OF 11



BASELINE B

Scale
 1"=30' Horizontal
 1"=3' Vertical

C:\Program Files\Acad 2009\Drawings\5881(Tampa Bay Blvd)\Sh03-Sh11

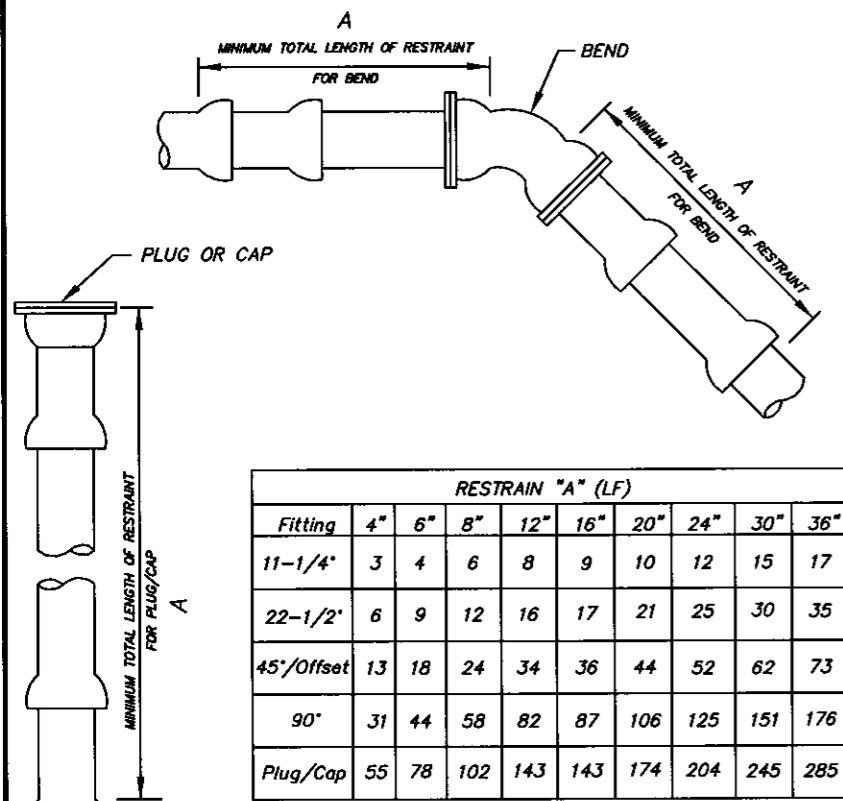
No.	DATE	REVISIONS	No.	DATE	REVISIONS
3			6		
2			5		
1			4		

DES: AD
 DRN: MP
 CKD: RAH
 DATE: 5-29-08

CITY of TAMPA
 STORMWATER DEPARTMENT

TAMPA BAY BLVD. STORMWATER IMPROVEMENTS
 FROM MACDILL AVE. TO GOMEZ AVE.

W.O. 5581
 SHEET
10
 OF 11

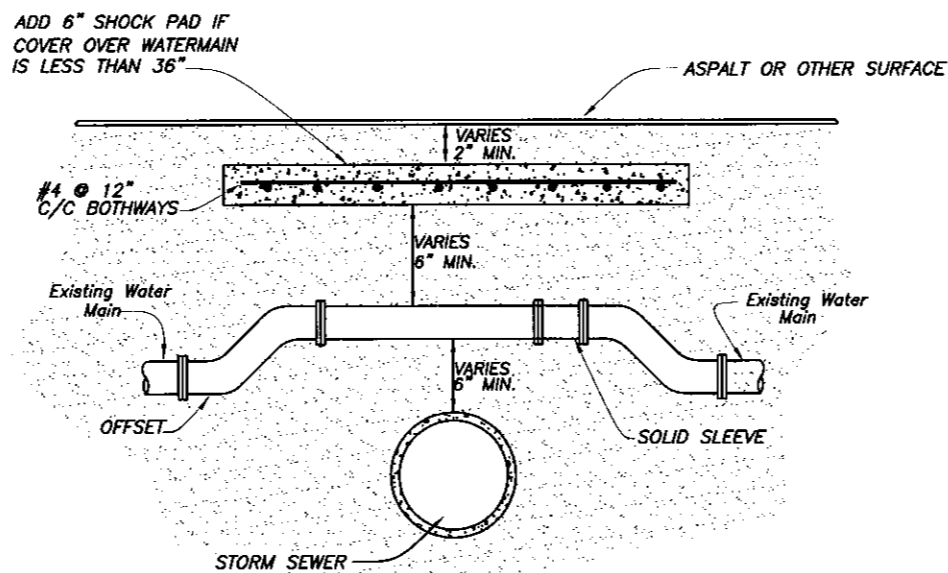


RESTRAIN "A" (LF)									
Fitting	4"	6"	8"	12"	16"	20"	24"	30"	36"
11-1/4"	3	4	6	8	9	10	12	15	17
22-1/2"	6	9	12	16	17	21	25	30	35
45'/Offset	13	18	24	34	36	44	52	62	73
90°	31	44	58	82	87	106	125	151	176
Plug/Cap	55	78	102	143	143	174	204	245	285

A=Minimum footage of pipe to be restrained.

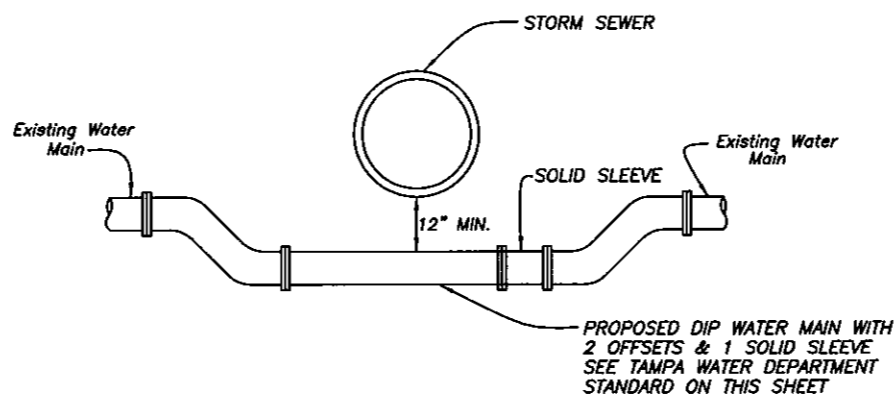
- NOTES:
- This table is based on:
 - maximum test pressure of 190 psi
 - laying condition type 2 (see Details 2.01 and 2.02)
 - poor soil conditions
 - using D.I.P.
 - 3 feet of cover for 12" and smaller mains;
 - 4 feet of cover for 16" and larger mains
 - Horizontal bends only - Engineer to submit calculations for vertical restraints
 - For polywrapped D.I.P., multiply the footage by 1.25
 - For PVC pipe, multiply footage by 1.2.
 - Restrained pipe shall be manufactured restrained pipe, push-on restraints or mechanical joint pipe restrained by Megalug or equivalent.
 - Any additional fittings within the restrained section shall be restrained accordingly.

RESTRAINED JOINT STANDARD FOR BENDS, PLUGS AND CAPS
NOT TO SCALE

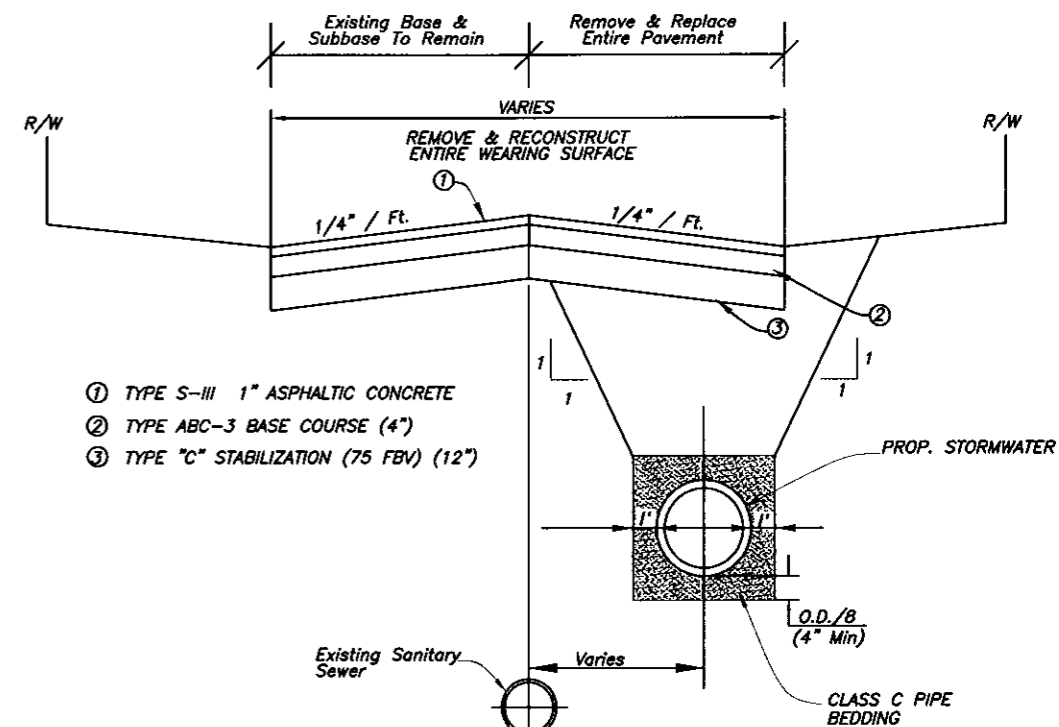


WATER MAIN RELOCATION
NOT TO SCALE

- NOTE:
- CENTER A FULL JOINT OF WATER PIPE WHEN CROSSING UNDER STORMWATER.
 - CHLORINE INJECTION & SAMPLE TAP LOCATION TO BE DETERMINED BY ENGINEER.



WATER MAIN RELOCATION
NOT TO SCALE



- TYPE S-III 1" ASPHALTIC CONCRETE
- TYPE ABC-3 BASE COURSE (4")
- TYPE "C" STABILIZATION (75 FBV) (12")

TAMPA BAY BLVD. STA. 11+00 TO STA. 15+75±
AND STA. 21+00 TO STA. 22+50±
PAVEMENT RESTORATION DETAILS
Not To Scale

No.	DATE	REVISIONS	No.	DATE	REVISIONS
3			6		
2			5		
1			4		

DES: AD
DRN: MP
CKD:
DATE:

CITY of TAMPA
STORMWATER DEPARTMENT

TAMPA BAY BLVD. STORMWATER IMPROVEMENTS
MISCELLANEOUS DETAILS