



CITY OF TAMPA

Pam Iorio, Mayor

CONTRACT ADMINISTRATION DEPARTMENT

David L. Vaughn, AIA, Director

ADDENDUM NO. 2

DATE: July 27, 2006

Contract: 6-C-23; Manhole Rehabilitation of Adamo, Clark and Sligh Interceptors
Bidders on the above referenced project are hereby notified that the following addendum is made to the Contract Documents. BIDS TO BE SUBMITTED SHALL CONFORM TO THIS NOTICE.

CONTRACT ITEMS

Item 1: On page C-3 replace the 3rd paragraph of Contract Item 8800 with the following:
The work also includes grouting the voids left after the removal of the well points and all associated pavement and sod restoration of disturbed areas.

PLANS

Item 2: On sheet 2 of the plans, add the following to the end of note 10:
Well points shall be removed after the manhole rehabilitation is complete. The voided areas left after the removal of the well points shall be filled with grout. Any pavement disturbed by the well point system shall be restored to pre-construction condition or better. The cost of grouting and restoring pavement shall be included in the unit cost of the well points. Well points will not be permitted for any of the manholes in Sligh Avenue due to the high volume of traffic.

Item 3: On sheet 2 of the plans, add the following note 11:
The flow in the 16" force main connected to manhole C5 can be temporarily diverted during the rehabilitation of this manhole. Contractor shall notify the City a minimum 48 hours prior to when the diversion is required.

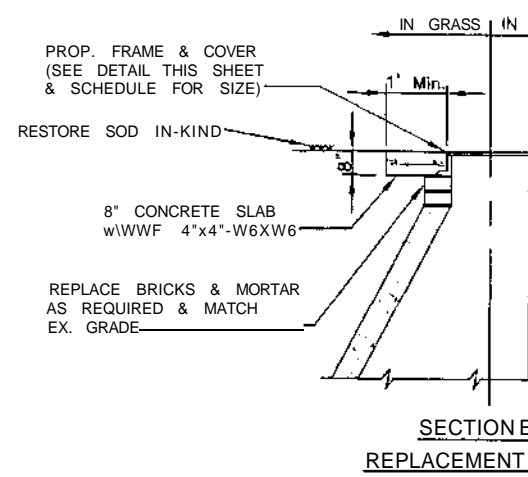
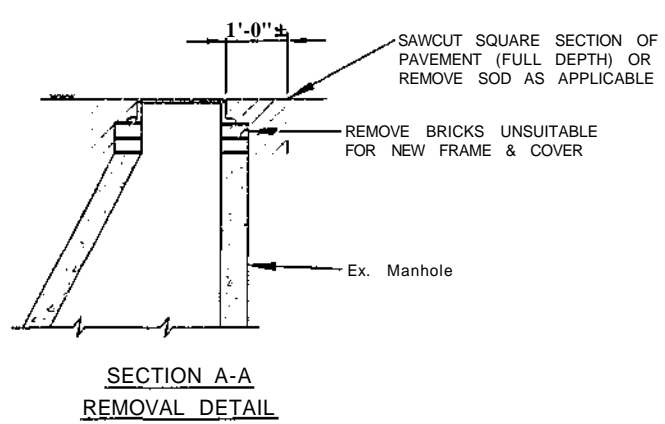
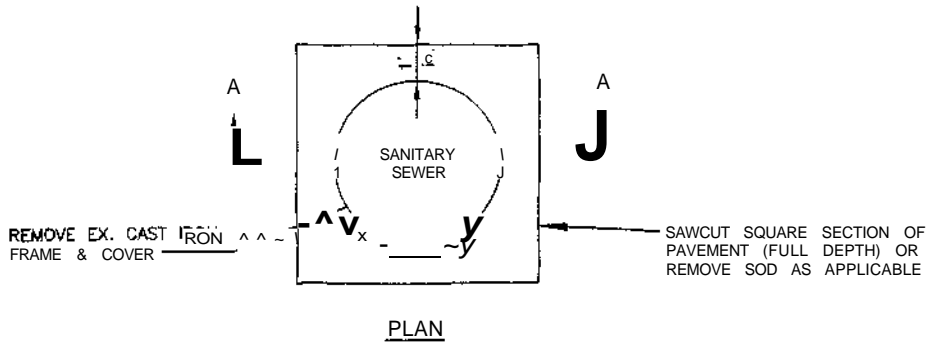
Item 4: Replace plan sheet 24 of 24 with the attached sheet 24 of 24.

This addendum shall be included in and attached to the inside cover of the Contract Documents by and upon which bids are submitted.

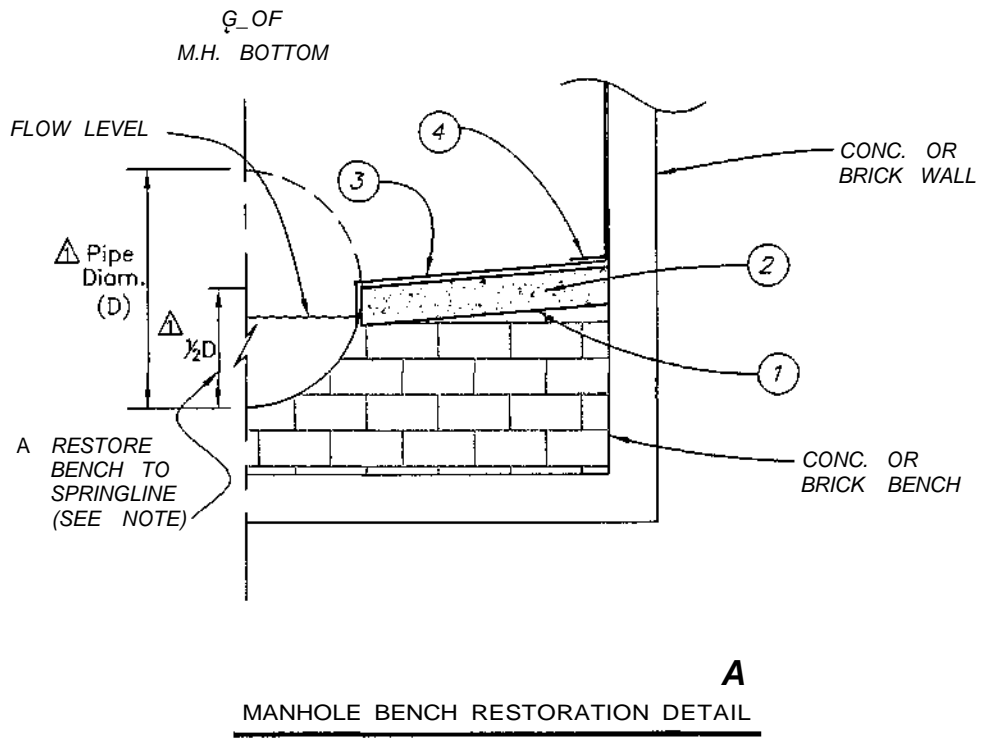
All other provisions of the Contract Documents and Specifications not in conflict with this Addendum shall remain in full force and effect.

Questions may be directed to Jim Greiner, P.E.; Telephone (813) 274-8598, fax (813) 274-8080, or e-mail [Jim.Greiner\(5\)tampagov.net](mailto:Jim.Greiner(5)tampagov.net).

Jim Greiner, P.E., Contract Manager
Contract Administration Department



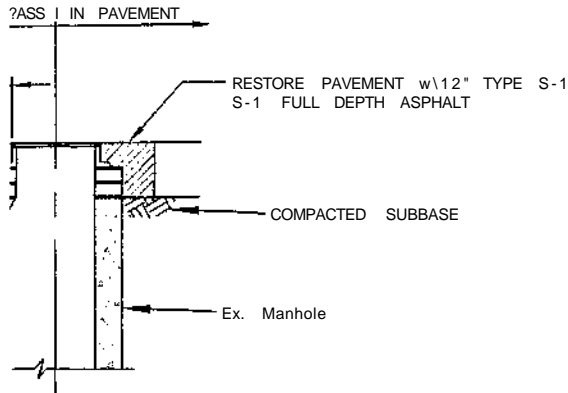
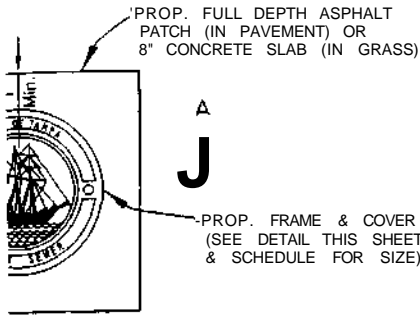
MANHOLE FRAME & COVER REPLACEMENT DETAIL
NOT TO SCALE



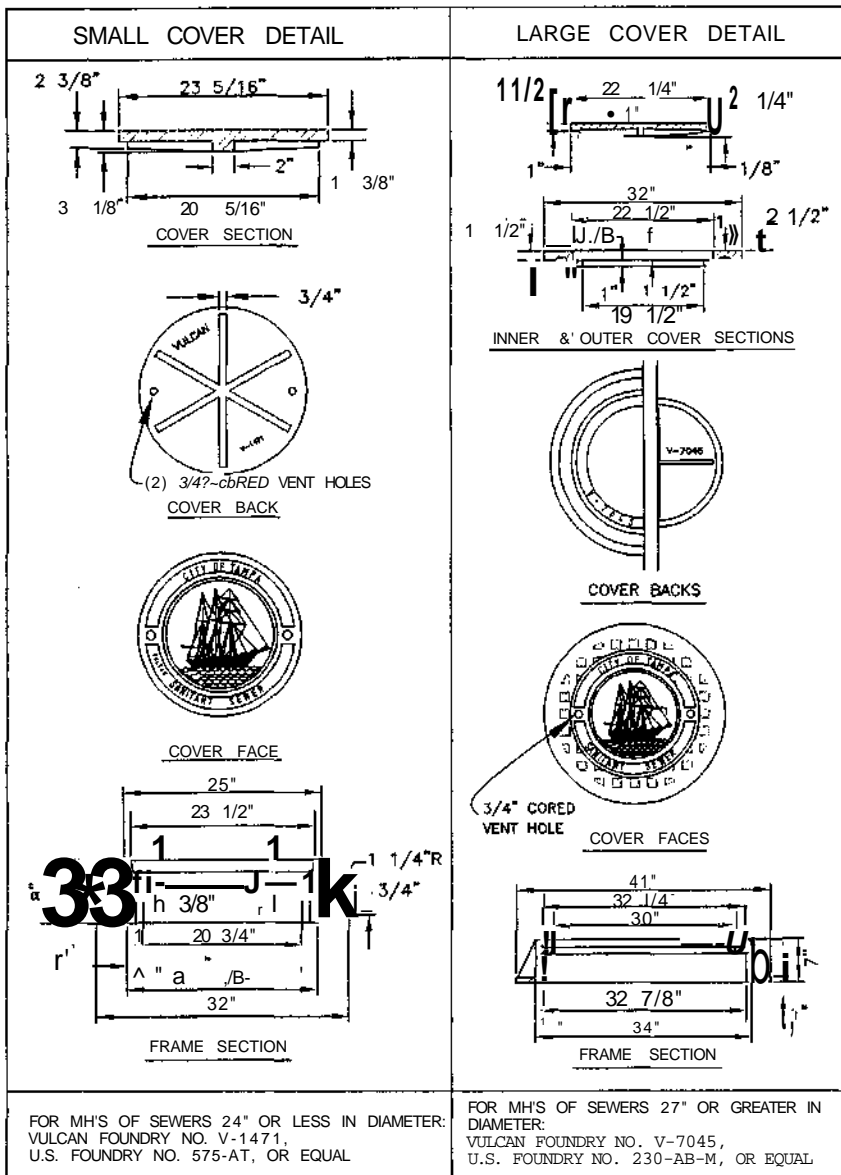
- (7) REMOVE ALL DEBRIS AND LOOSE
- (2) INSTALL A MINIMUM 1" THICK CL... ALLOW CONCRETE TO CURE (MIN... BY THE ENGINEER).
- (1) OVERLAY BENCHES WITH PROPOS
- (7) PROVIDE 6" COATING THICKNESS IS INCLUDED IN THE BOTTOM CH

A NOTE:
EX/STING MANHOLE BENCHES OF CORRODED AND/OR ERODED BEL PIPE. BENCHES SHALL BE RES1 WORK MAY REQUIRE THE INSTALL DURING LOW FLOW PERIODS.

No.	DATE	REVISIONS	No.	DATE	REVISIONS	DES: J.F.
3			6			DRN: R.A.R.
2			5			CKDif?2?<"
A	07/26/06	REVISED MANHOLE BENCH RESTORATION DETAIL.	4			DATE ^-%/^



SECTION B-B
PAVEMENT DETAIL



LOOSE BRICKS FROM THE TOP OF THE BENCH.

LOCK CLASS "D" CONCRETE OVER EXISTING BENCH.
CURE (MIN. 24 HRS. UNLESS OTHERWISE APPROVED)

PROPOSED COATING SYSTEM.

KNESSE TRANSITION. PAYMENT FOR THIS ITEM
FROM CHAMBER COST PER SQUARE FOOT.

COVERS OF THE CLARK INTERCEPTOR MANHOLES HAVE
BEEN RESTORED TO THE SPRINGLINE (1/2" DIAMETER) OF THE
PIPE RESTORED TO THE SPRINGLINE AS SHOWN. THIS
INSTALLATION OF A FLOW-THRU PLUG OR WORKING
COVER IS REQUIRED.

HEAVY DUTY CAST IRON MANHOLE FRAME & COVER DETAILS

CITY of TAMPA
WASTEWATER DEPARTMENT

MANHOLE REHABILITATION OF
ADAMO, CLARK AND SLIGH INTERCEPTORS
CAST IRON FRAME & COVER REPLACEMENT DETAIL
(NOT TO SCALE)

W.O. 5324
SHEET
OF 24