



CITY OF TAMPA

Pam Iorio, Mayor

CONTRACT ADMINISTRATION DEPARTMENT

David L. Vaughn, AIA, Director

ADDENDUM NO. 2

DATE: September 4, 2007

Project: 7-C-79; Howard F. Curren AWTP Chlorination System Upgrade, Phase II

Bidders on the above referenced project are hereby notified that the following addendum is made to the Contract Documents. BIDS TO BE SUBMITTED SHALL CONFORM TO THIS NOTICE.

Item 1: Instructions to Bidders Section I-1.03 and Agreement Article 4.01:
The Time for Completion is hereby changed to 365 days.

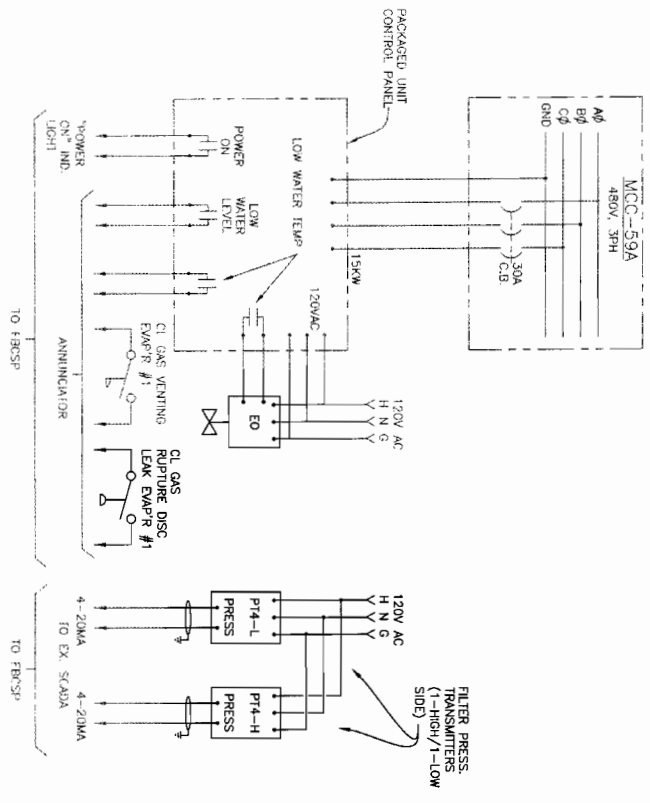
Item 2: Replace Plan Sheet pages E1-E10 with attached.

This addendum shall be included in and attached to the inside cover of the Contract Documents by and upon which bids are submitted.

All other provisions of the Contract Documents and Specifications not in conflict with this Addendum shall remain in full force and effect.

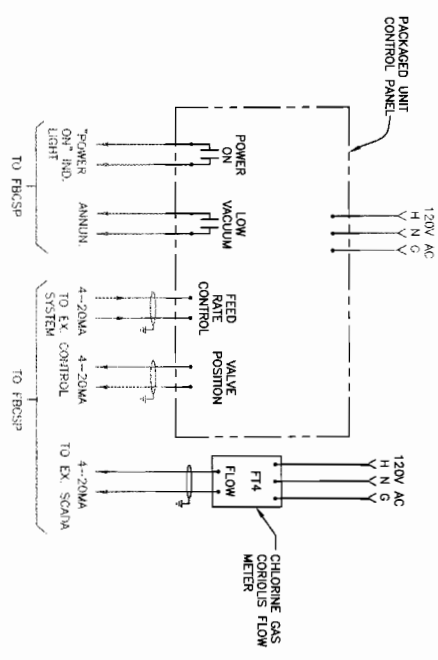
Questions may be directed to Jim Greiner, P.E.; Telephone (813) 274-8598, fax (813) 274-8080, or e-mail Jim.Greiner@tampagov.net.

Jim Greiner, P.E., Contract Manager
Contract Administration Department



CHLORINE EVAPORATOR SYSTEM MODIFICATIONS

FB-EV-1
 FB-EV-2 & FB-EV-3 ARE SIMILAR
 FB-EV-4 IS EXISTING



CHLORINATOR FB-CH-1

FB-CH-2 & FB-CH-3 ARE SIMILAR
 FB-CH-4 IS EXISTING

NOTE:

EXISTING FACILITIES ARE SHOWN IN SCREENED LINEWORK. MODIFICATIONS TO BE MADE UNDER THIS CONTRACT ARE DELINEATED BY DARK LINEWORK.

ROMAN D. KORCHAK, P.E. #42826 ELECTRICAL SECTION HEAD WASTEWATER DEPARTMENT		DES: RDK DWN: RDK CKD: <i>RDK</i> DATE: 6/11/07		CITY of Tampa HOWARD F. CIBERN ADVANCED WASTEWATER TREATMENT PLANT		CHLORINE SYSTEM UPGRADE, PHASE II ELECTRICAL CHLORINE SYS. DETAILS/SCHEMATICS		W.O. 5004 SHEET E3 OF 24
No.	DATE	REVISIONS						
3								
2								
1								

POWER AND CONTROLS

CONDUIT NO.	SIZE	NUMBER OF CONDUCTORS	FROM	TO
59AM11	1	4-#12AWG	MCC-59A	CONTROL PANEL FB-EV-1
59AM11A	3/4	2-#14AWG	CONTROL PANEL FB-EV-1	ELECTRIC OPERATOR
59AM12	1	4-#12AWG	MCC-59A	CONTROL PANEL FB-EV-2
59AM12A	3/4	2-#14AWG	CONTROL PANEL FB-EV-2	ELECTRIC OPERATOR
59AM13	1	4-#12AWG	MCC-59A	CONTROL PANEL FB-EV-3
59AM13A	3/4	2-#14AWG	CONTROL PANEL FB-EV-3	ELECTRIC OPERATOR
59AM27	1	3-#10AWG	MCC-59A	CONTROL PANEL FB-EV-4
59AM27A	3/4	2-#14AWG	CONTROL PANEL FB-EV-4	ELECTRIC OPERATOR
5C76	1-1/4	12-#14AWG	FCRSP	J.B. @ FB-CH-1
5C76A	3/4	4-#14AWG	J.B. @ FB-CH-1	FB-CH-1
5C76B	1	8-#14AWG	J.B. @ FB-CH-1	J.B. @ FB-CH-2
5C76C	3/4	4-#14AWG	J.B. @ FB-CH-2	FB-CH-2
5C76D	3/4	4-#14AWG	J.B. @ FB-CH-2	FB-CH-3
5C84	3/4	12-#14AWG	1-#12COND	J.B. @ FB-EV-1
5C84A	3/4	2-#14AWG	J.B. @ FB-EV-1	FLOW SW. @ FB-EV-1
5C84B	3/4	8-#14AWG	J.B. @ FB-EV-1	J.B. @ FB-EV-2
5C84C	3/4	2-#14AWG	J.B. @ FB-EV-2	FLOW SW. @ FB-EV-2
5C84D	3/4	2-#14AWG	J.B. @ FB-EV-2	FLOW SW. @ FB-EV-3
5C84E	3/4	2-#14AWG	J.B. @ FB-EV-1	PRESS. SW. @ FB-EV-1
5C84F	3/4	2-#14AWG	J.B. @ FB-EV-2	PRESS. SW. @ FB-EV-2
5C84G	3/4	2-#14AWG	J.B. @ FB-EV-2	PRESS. SW. @ FB-EV-3
5C88	1	13-#14AWG	1-#12COND	J.B. @ FB-EV-4
5C88A	3/4	10-#14AWG	J.B. @ FB-EV-4	J.B. @ FB-EV-4
5C88B	3/4	2-#14AWG	FLOW SWITCH @ FB-EV-4	J.B. @ FB-EV-4
5C88C	3/4	4-#14AWG	J.B. @ FB-EV-4	J.B. @ FB-CH-4
5C89D	3/4	4-#14AWG	J.B. @ FB-EV-4	J.B. @ FB-EV-4
5C89E	3/4	2-#14AWG	PRESS. SWITCH @ FB-EV-4	J.B. @ FB-EV-4

INSTRUMENTATION

CONDUIT NO.	SIZE	NUMBER OF CONDUCTORS	FROM	TO
5N17	1-1/4	6-2/C#16 TWSH	FCRSP	J.B. @ FB-CH-3
5N17A	3/4	2-2/C#16 TWSH	J.B. @ FB-CH-3	FB-CH-3
5N17B	1	4-2/C#16 TWSH	J.B. @ FB-CH-3	J.B. @ FB-CH-2
5N17C	3/4	2-2/C#16 TWSH	J.B. @ FB-CH-2	FB-CH-2
5N17D	3/4	2-2/C#16 TWSH	J.B. @ FB-CH-2	FB-CH-1
5N34	2	14-2/C#16 TWSH	J.B. @ FB-CH-4	FCRSP
5N35A	3/4	1-2/C#16 TWSH	J.B. @ FB-CH-1	FT1
5N35B	3/4	1-2/C#16 TWSH	J.B. @ FB-CH-2	FT2
5N35C	3/4	1-2/C#16 TWSH	J.B. @ FB-CH-3	FT3
5N35D	3/4	2-2/C#16 TWSH	FB-CH-4	J.B. @ FB-CH-4
5N35E	3/4	2-2/C#16 TWSH	J.B. @ FB-EV-4	J.B. @ FB-CH-4
5N35F	3/4	1-2/C#16 TWSH	J.B. @ FB-CH-4	FT4
5N35G	3/4	2-2/C#16 TWSH	J.B. @ FB-EV-4	PT4-L, PT4-H
5N35H	3/4	2-2/C#16 TWSH	J.B. @ FB-CH-1	PT2-L, PT2-H
5N35I	3/4	2-2/C#16 TWSH	J.B. @ FB-CH-2	PT3-L, PT3-H
5N35K	3/4	2-2/C#16 TWSH	J.B. @ FB-CH-3	

CONDUIT AND CABLE SCHEDULES

PROVIDE AND INSTALL A #12AWG (OR LARGER AS SCHEDULED) GROUNDING CONDUCTOR IN ALL CONDUITS.

NOTE:

EXISTING FACILITIES ARE SHOWN IN SCREENED LINENWORK. MODIFICATIONS TO BE MADE UNDER THIS CONTRACT ARE DELINEATED BY DARK LINENWORK AND/OR *

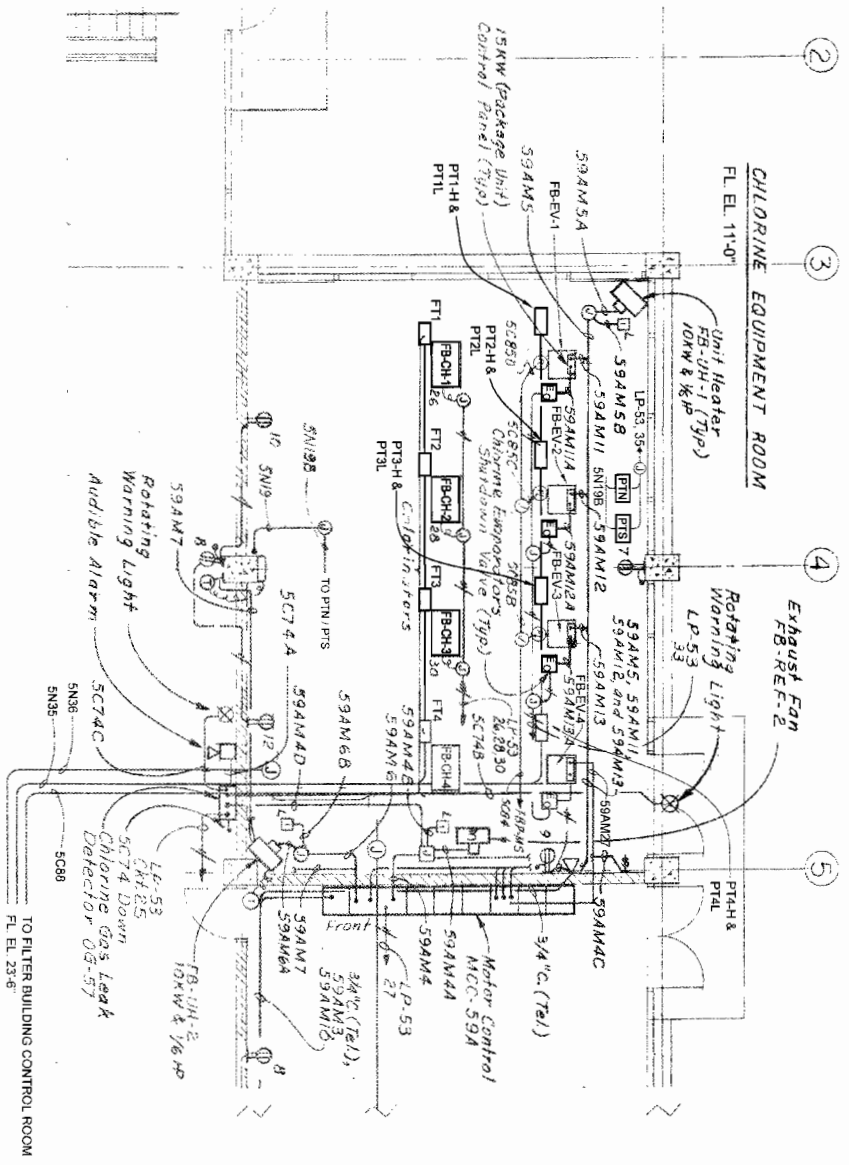
ROMAN D. KORCHAK P.E. #42926
ELECTRICAL SECTION HEAD
WASTEWATER DEPARTMENT

No.	DATE	REVISIONS
1		
2		
3		

DES: RDK
CHK: RDK
DATE: 9/11/07

CITY of Tampa
HOWARD P. CURRIEN
ADVANCED WASTEWATER TREATMENT PLANT

CHLORINE SYSTEM UPGRADE, PHASE II
CHLORINE CONDUIT AND CABLE SCHED.



PLAN VIEW EL. 11'-0"

NOTE:

EXISTING FACILITIES ARE SHOWN IN SCREENED LINework. MODIFICATIONS TO BE MADE UNDER THIS CONTRACT ARE DELINEATED BY DARK LINework.

ROMAN D. KORCHAK P.E. #42626
ELECTRICAL SECTION HEAD
WASTEWATER DEPARTMENT

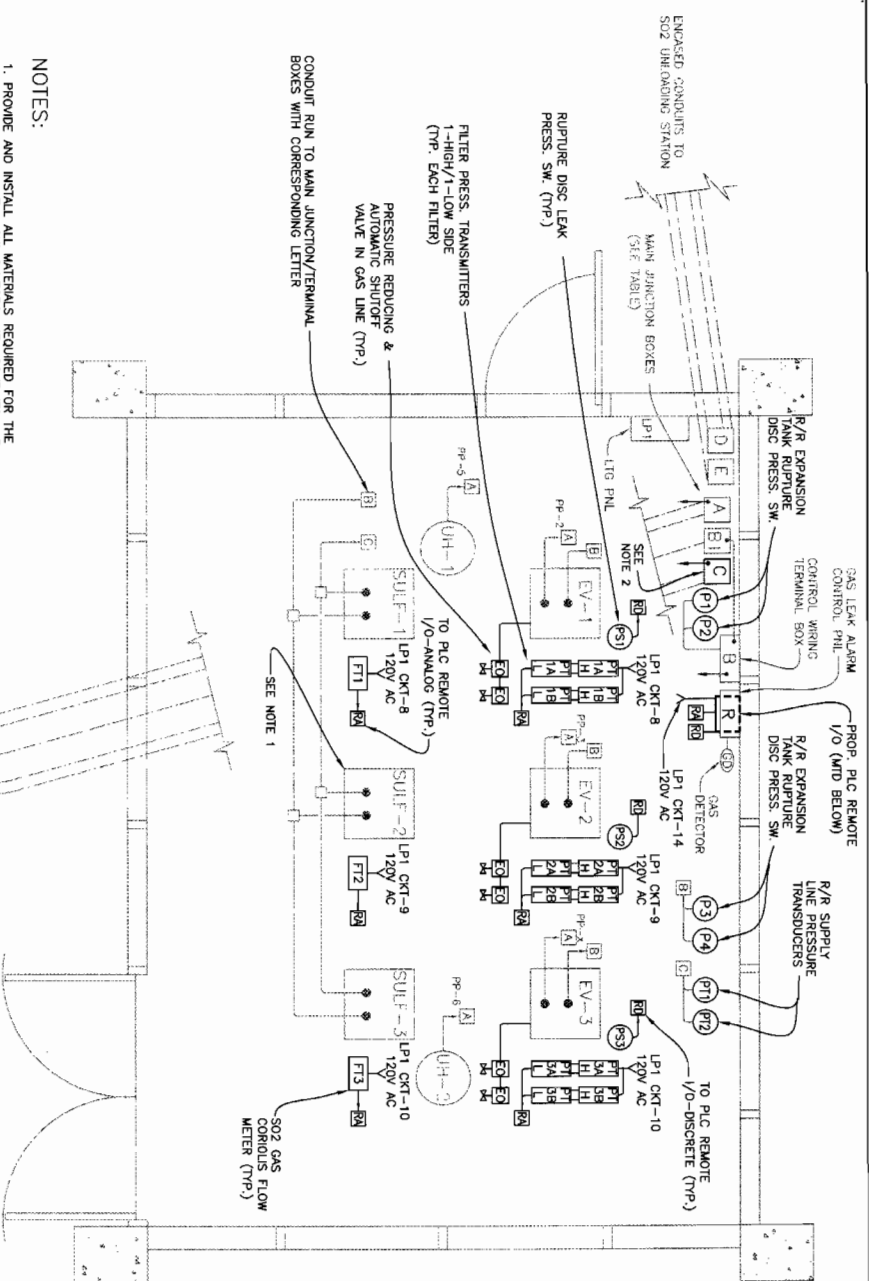
No.	DATE	REVISIONS
3		
2		
1		

DES. RDK
DWN. RDK
CND. RDK
DATE: 8/10/07

CITY of TAMPA
HOWARD F. CURRAN
ADVANCED WASTEWATER TREATMENT PLANT

CHLORINATION SYSTEM UPGRADE
ELECTRICAL
CHLORINE ROOM PLAN EL. 11'-0"

TPB7-32



- NOTES:
1. PROVIDE AND INSTALL ALL MATERIALS REQUIRED FOR THE REALIGNMENT OF THE SULFONATORS, NEW CONDUITS AND CONDUCTORS SHALL BE PROVIDED AND INSTALLED AS REQUIRED. ALL CONDUCTORS THAT ARE NOT OF SUFFICIENT QUALITY SHALL BE REPAIRED OR REPLACED. ALL REPAIRS AND TERMINATIONS SHALL BE MADE IN EXISTING MAIN JUNCTION BOXES-- NO INTERMEDIATE SPICES ARE ALLOWED.
 2. REMOVE THE EXISTING, DAMAGED, MAIN ANALOG JUNCTION BOX "C" AND REPLACE WITH A 12 X 16 X 36" HOFFMAN NEMA 4X ALUMINUM ENCLOSURE #A-18H1206ALP AND A-18P12AL ALUMINUM PANEL.

SULFUR ROOM PLAN VIEW EL. 11'-6"

BOX	FROM	TO	WIRE FILL
A	480-V, 3PH, POWER PANEL, PP, IN FILTER BLDG. HAV EQUIP. RM	EVAPORATORS AND UNIT HEATERS IN SO2 LIT PHL IN SO2 RM	24-#12AWG & 1-#12GND IN EX. CONDUITS
A	15KVA, LIT. TRANSF. IN EQUIP. RM	VARIOUS CONTROL EQUIP. IN SO2 RM	3-#4AWG & 1-#8GND IN EX. CONDUITS
B	DECHLOR. PHL. IN FILTER BLDG. CONTROL RM	VARIOUS INSTRUMENTATION IN SO2 RM	120-#12AWG & 1-#12GND IN EX. CONDUITS
C	SCADA PLC IN FILTER BLDG. CONTROL RM	PLC REMOTE I/O RACK IN SO2 RM	1-#12GND IN EX. CONDUIT
R	(1)-PT AND (3)-PT IN SO2 RM	PLC REMOTE I/O RACK IN SO2 RM. VA RM	15-2/C #16 SHUD & 1-#12GND IN NEW CONDUITS
R	(3)-PS IN SO2 RM	PLC REMOTE I/O RACK IN SO2 RM. VA RM	6-#12AWG & 1-#12GND IN NEW CONDUITS

NOTE:
EXISTING FACILITIES ARE SHOWN IN SCREENED LINEWORK. MODIFICATIONS TO BE MADE UNDER THIS CONTRACT ARE DELINEATED BY DARK LINEWORK.

ROMAN D. KORBOK, P.E. #428286 ELECTRICAL SECTION HEAD WASTEWATER DEPARTMENT		DES: RDK DRN: RDK CKD: RDK DATE: 8/10/07		CITY of TAMPA HOWARD F. CURRIE ADVANCED WASTEWATER TREATMENT PLANT		CHLORINATION SYSTEM UPGRADE ELECTRICAL SULFUR ROOM PLAN		W.O. 5004 SHEET E6 OF 26	
No.	DATE	REVISIONS							
3									
2									
1									

ROMAN D. KORCHAK, P.E. #42626
 ELECTRICAL SECTION HEAD
 WASTEWATER DEPARTMENT

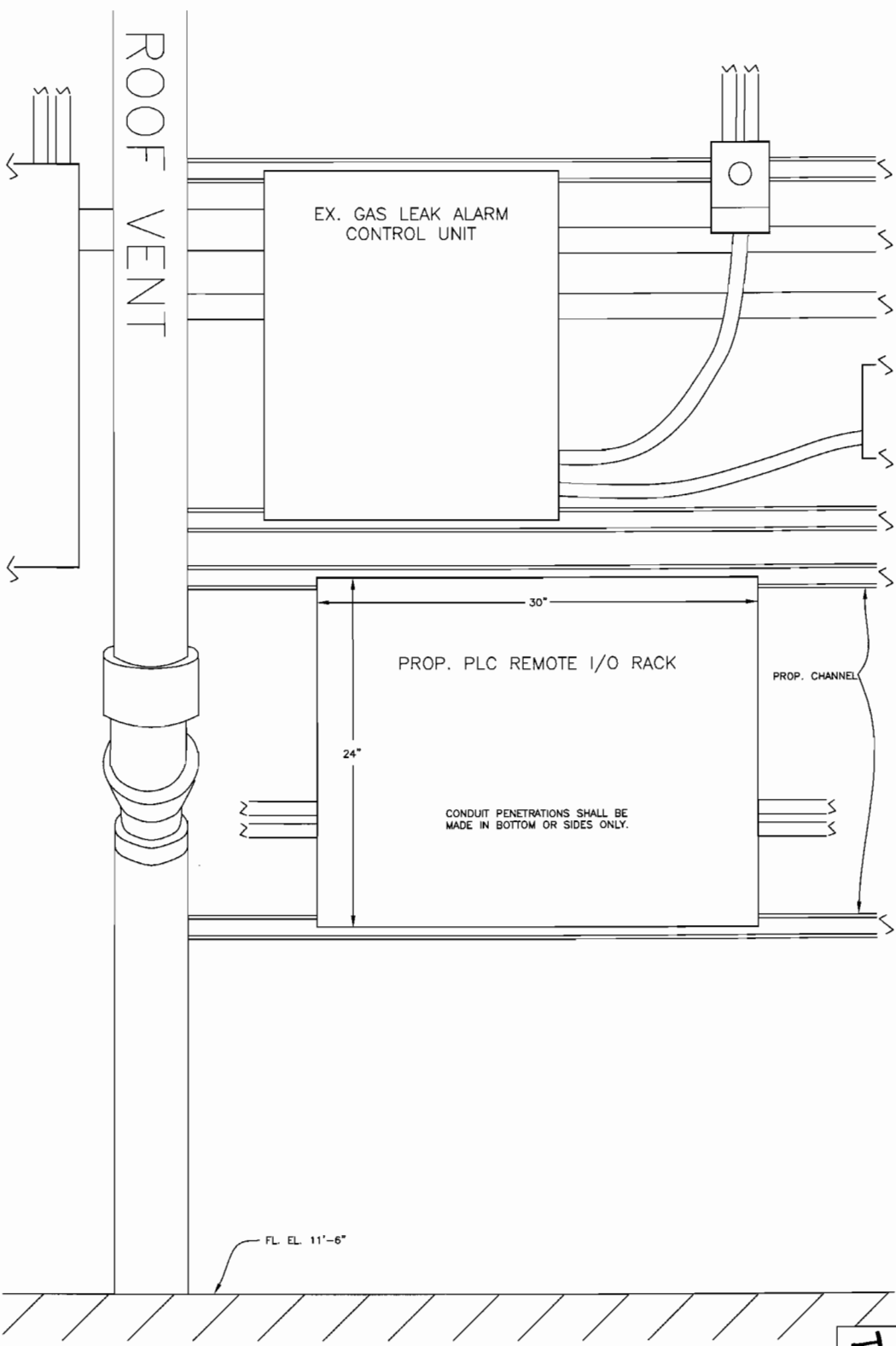
No.	DATE	REVISIONS
1		
2		
3		

DES: RDK
 DRN: RDK
 CRD: *RDK*
 DATE: 7/16/07

CITY of TAMPA
 THOMAS J. CURRAN
 ADVANCED WASTEWATER TREATMENT PLANT

CHLORINATION SYSTEM UPGRADE
 ELECTRICAL--SULFUR RM
 PROP. REMOTE I/O ENCL. MOUNTING

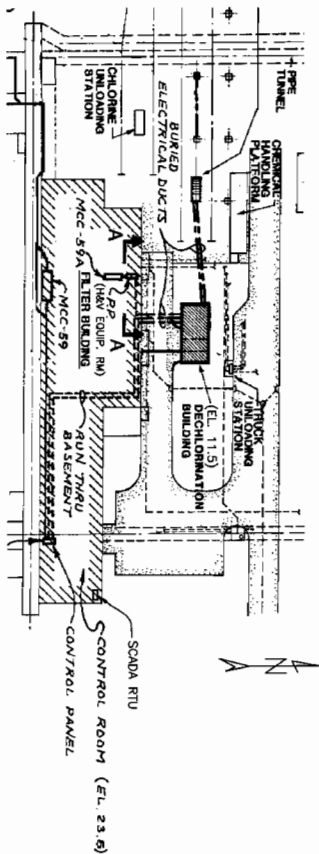
W.O. 5004
 SHEET
E9
 OF 26



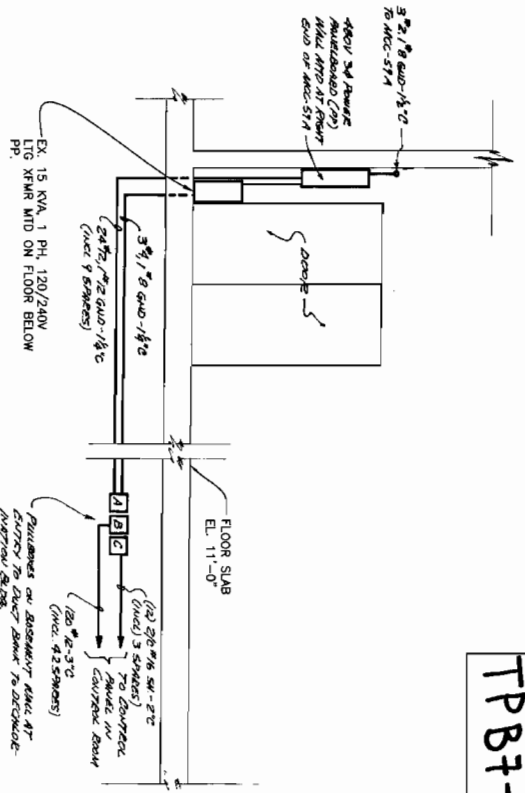
REMOTE I/O ENCLOSURE MOUNTING- PROFILE VIEW

1" = 6.8"

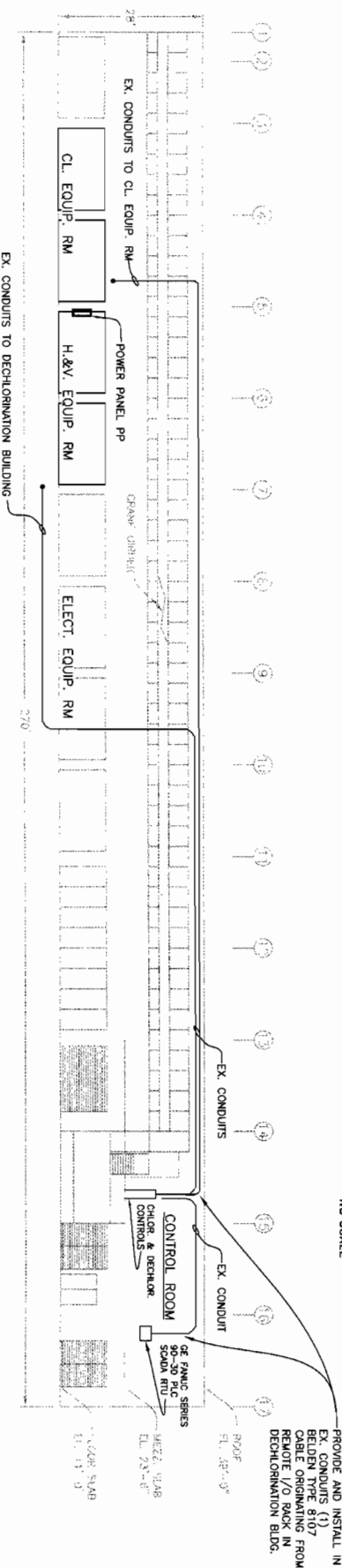
TPB7-35



LOCATION PLAN
NO SCALE



H & V EQUIPMENT ROOM (IN FILTER BUILDING)
SECTION A - A
NO SCALE



FILTER BUILDING ELEVATION
1"=20'

NOTE:
THESE FACILITIES ARE EXISTING-- NEW WORK IS IDENTIFIED BY "*".

ROMAN D. KORGANIK, P.E. #42626 ELECTRICAL SECTION HEAD WASTEWATER DEPARTMENT		DES: RDK DRN: RDK CKD: RDK DATE: 7/17/07		CITY of TAMPA HOWARD F. CURRY ADVANCED WASTEWATER TREATMENT PLANT		CHLORINATION SYSTEM UPGRADE ELECTRICAL MISC. PLAN AND ELEVATION VIEWS		W.O. 5004 SHEET E10 OF 24
No.	DATE	REVISIONS						
3								
2								
1								