

**City of Tampa  
Implementation Model  
for an  
Efficiency and Effectiveness Task Force Initiative (11/07)**

**Attachment H**

Progress/Reporting Quad Chart (same as PM Guidelines/ITSC) Sample

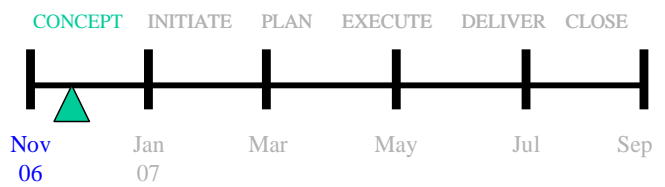
**AntiSpam Capability (104051)**

**Sponsor: Jim Levin  
Parks & Rec**

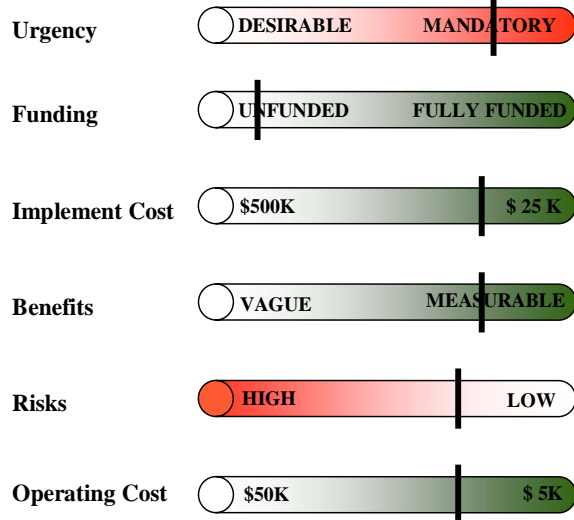
**Requirement**

- Purchasing of the Premium AntiSpam Add-On to Symantec Mail Security for SMTP and MS Exchange
- This solution is operational at 9 of the top 13 internet service providers in the U.S.

**Timeline**



**Current Status**



**Way Ahead**

- ITSC review
- Approval required to move to Initiate Phase
- If not then disposition of request