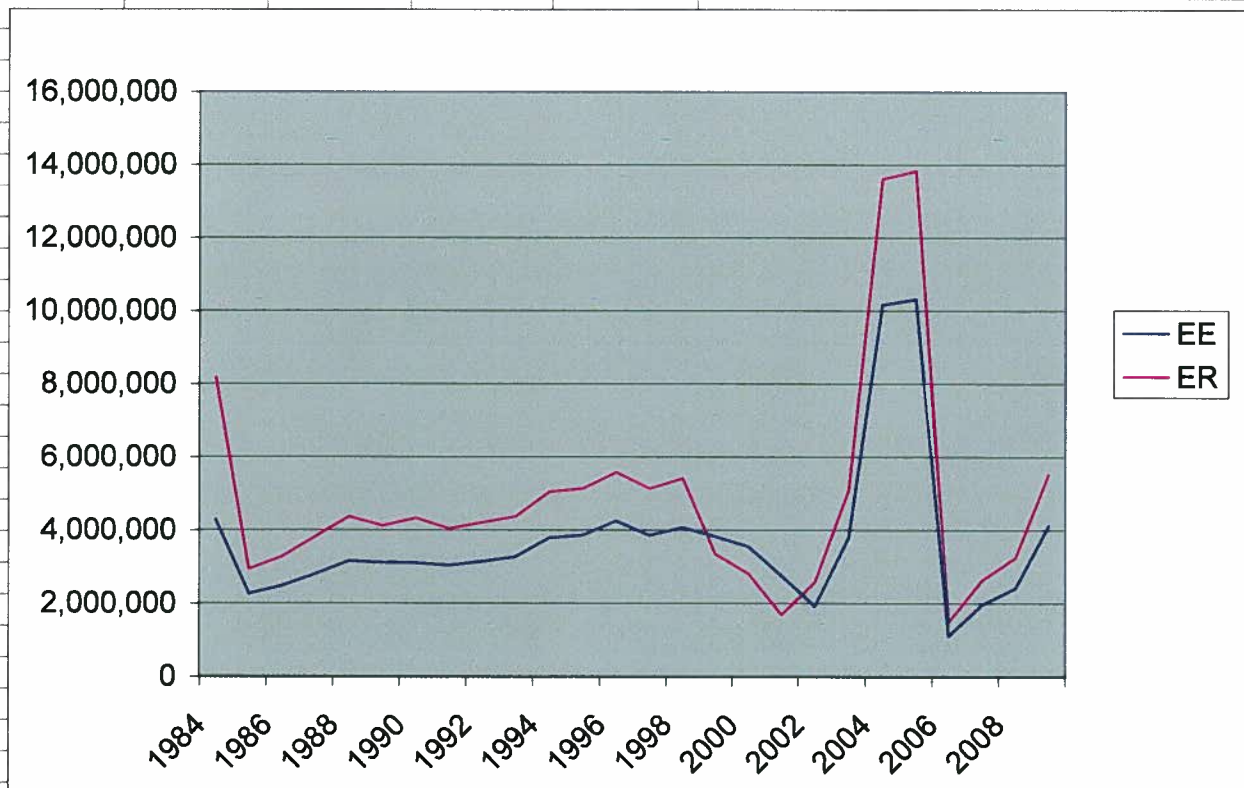


FYE	EE	ER	EE as FSCR%	EE as % of pay (average)	
9/30/1984	4,277,592	8,175,746			
9/30/1985	2,267,036	2,941,636	47.800	7.73	*transition to new actuary, change in calculation methodology, contribution rebates
9/30/1986	2,486,522	3,284,978	49.600	8.35	
9/30/1987	2,802,664	3,834,671	48.900	8.49	
9/30/1988	3,160,758	4,371,957	44.500	7.96	
9/30/1989	3,112,275	4,126,198	39.400	7.31	
9/30/1990	3,109,579	4,336,666	32.067	5.98	
9/30/1991	3,032,419	4,046,981	32.067	6.35	
9/30/1992	3,137,568	4,213,754	33.257	5.90	
9/30/1993	3,271,611	4,381,482	33.257	5.97	
9/30/1994	3,792,596	5,054,349	33.257	5.85	
9/30/1995	3,856,548	5,138,135	33.257	4.96	
9/30/1996	4,250,066	5,583,655	33.257	5.01	
9/30/1997	3,855,613	5,138,258	28.789	6.55	
9/30/1998	4,070,588	5,418,061	28.789	6.50	
9/30/1999	3,824,507	3,352,653	28.789	6.45	ER 3 year holiday on 13th check match
9/30/2000	3,549,299	2,814,052	24.529	5.50	
9/30/2001	2,751,281	1,695,554	18.554	3.90	
9/30/2002	1,925,163	2,579,719	8.680	1.80	
9/30/2003	3,800,171	5,092,230	22.420	4.77	
9/30/2004	10,165,014	13,614,832	56.950	12.15	
9/30/2005	10,320,136	13,835,270	52.100	11.17	
9/30/2006	1,105,469	1,481,329	5.420	1.18	
9/30/2007	1,961,791	2,628,801	9.290	2.05	
9/30/2008	2,424,978	3,249,470	11.830	2.61	
9/30/2009	4,126,605	5,529,617	18.510	4.11	
9/30/2010			30.510	6.79	
FYE = Fiscal Year Ending				5.98	26 Year Average
EE = Employee contributions					
ER = Employer contributions					



Sources: F&P Pension Actuarial Valuations and Annual Reports on file at pension office 1991 - 2009  
financial statements on file at external CPA firm 1984 - 1990

EE contrib history 25 year history 12/2009