

TAMPA POLICE DEPARTMENT 2005 ANNUAL CRIME REPORT



**Stephen Hogue
Chief of Police**

**Prepared by:
Crime Analysis and Mapping Unit
March 2006**

2005
TAMPA POLICE DEPARTMENT
ANNUAL CRIME REPORT
SUMMARY

There were 5,035 fewer Part I index crimes in 2005 than 2004. Part I index crime was down by 16.8 % in Tampa in 2005 compared to 2004.

Violent crime was down by 471 occurrences in 2005 compared to 2004. This equates to a 9.1 % decrease in violent crime.

Non-violent crime was down 4,564 occurrences in 2005 compared to 2004. This equates to a decrease of 18.4 % compared to 2004.

There were ten less Murders in 2005 compared to 2004, which equates to a significant 33.3 % decrease.

There were 27 more Sexual Batteries in 2005 compared to 2004, which equates to a 10.9 % increase.

There were 235 fewer Aggravated Assaults in 2005 compared to 2004, which equates to a decrease of 6.7 %.

There were 253 fewer Robberies in 2005 compared to 2004, which equates to a substantial 17.9 % decrease.

There were 2,257 fewer Larcenies in 2005 compared to 2004, which equates to a decrease of 15.2 %. Specifically there were 1,541 fewer Larcenies from Motor Vehicles (referred to as Auto Burglaries) equating to a substantial 29.9 % decrease.

There were 1,163 fewer Burglaries in 2005, which resulted in a 19.1 % decrease.

Vehicle Thefts decreased by 1,144 in 2005, which resulted in a substantial 29.1 % decrease.

**TAMPA POLICE DEPARTMENT
ANNUAL 2005 CRIME REPORT**

VIOLENT	2004	2005	# DIFF.	% DIFF.
Murder	30	20	-10	-33.3%
Sexual Battery	248	275	27	10.9%
Robbery	1,413	1,160	-253	-17.9%
Aggravated Assault	3,487	3,252	-235	-6.7%
TOTAL VIOLENT	5,178	4,707	-471	-9.1%
NON-VIOLENT	2004	2005	# DIFF.	% DIFF.
Burglary	6,077	4,914	-1163	-19.1%
Larceny	14,821	12,564	-2257	-15.2%
Vehicle Theft	3,937	2,793	-1144	-29.1%
TOTAL NON-VIOLENT	24,835	20,271	-4564	-18.4%
TOTAL PART ONE CRIME	30,013	24,978	-5,035	-16.8%

TAMPA POLICE DEPARTMENT				
2004 TO 2005				
COMPARISON SUMMARY FOR				
PART II MANDATORY AND PART II OPTIONAL OFFENSES				
	2004	2005	DIFF	% CHANGE
Kidnapping/Abduction	36	48	12	33.3%
Simple Assault	5,385	5,316	-69	-1.3%
Arson	73	44	-29	-39.7%
Fraud - Swindle	991	1,020	29	2.9%
Fraud - Credit Card	194	199	5	2.6%
Fraud - Impersonation	76	77	1	1.3%
Fraud - Welfare	90	63	-27	-30.0%
Fraud - Wire	15	35	20	133.3%
Total Fraud Offenses	1,366	1,394	28	2.0%
Embezzlement	158	234	76	48.1%
Drug Offenses	6,578	7,144	566	8.6%
Drug Paraphernalia Offenses	200	342	142	71.0%
Bribery	0	0	0	N/A
Intimidation	385	473	88	22.9%
Extortion/Blackmail	11	20	9	81.8%
Counterfeiting/Forgery	568	743	175	30.8%
Stolen Property Offenses	38	48	10	26.3%
Vandalism	3,734	3,294	-440	-11.8%
Non-Forcible Sex Offenses	118	125	7	5.9%
Obscenity Offenses	13	24	11	84.6%
Gambling	7	9	2	28.6%
Liquor Law Violation	2,467	2,705	238	9.6%
Weapons Violations	443	487	44	9.9%
Prostitution	649	561	-88	-13.6%
DUI	2,825	2,836	11	0.4%
Total Listed Part 2 Offenses	25,054	25,847	793	3.2%
Total Part 2(exclude Victimless Crimes)	11,885	11,763	-122	-1.0%
Productivity Profile				
<i>(Includes all Part I, Part II, Traffic and City Ordinances)</i>				
January to December	2004	2005	DIFF	% CHANGE
Calls for Service:				
Citizen Initiated Call for Service	247,272	229,211	-18,061	-7.3%
Self Initiated Call for Service	290,698	340,651	49,953	17.2%
Arrests	39,663	50,522	10,859	27.4%
Citations	117,716	133,442	15,726	13.4%
Victims	38,301	33,274	-5,027	-13.1%

ALL ASPECTS OF THE DATA PROVIDED HEREIN ARE SUSCEPTIBLE TO A DEGREE OF ERROR DUE TO THE COMPLEXITIES OF THE PROCESS INVOLVED IN COMPILING AND PROGRAMMING THE DATA. NO WARRANTY, REPRESENTATION OR GUARANTY IS MADE OR IMPLIED REGARDING THE CONTENT, SEQUENCE, ACCURACY, TIMELINESS OR COMPLETENESS OF THE DATA PROVIDED HEREIN.

CRIME RATES
Per 100,000 Population

YEAR	POPULATION	CRIME RATE
1995	285,153	14,417.52
1996	289,337	14,816.98
1997	290,886	12,638.63
1998	293,390	12,256.72
1999	297,505	10,761.50
2000	303,447	11,094.50
2001	308,005	11,314.10
2002	311,880	11,344.11
2003	318,258	10,740.30
2004	323,663	9,272.91
2005	326,519	7,649.80

ARREST INFORMATION
Part I and Part II Crimes

	2004	2005	Difference	% Change
ADULT	35,740	45,883	10,143	28.38
JUVENILE	3,923	4,639	716	18.25
MALE	30,828	39,053	8,225	26.68
FEMALE	8,835	11,469	2,634	29.81
TOTAL	39,663	50,522	10,859	27.38

DOMESTIC VIOLENCE OFFENSE COMPARISON 2004-2005

	2004	2005	DIFF	%
MURDER	6	4	-2	-33.3%
MANSLAUGHTER	0	0	0	N/A
FORCIBLE RAPE	33	43	10	30.3%
FORCIBLE SODOMY	1	2	1	100.0%
FORCIBLE FONDLING	20	21	1	5.0%
AGGRAVATED ASSAULT	1,017	906	-111	-10.9%
AGGRAVATED STALKING	16	20	4	25.0%
SIMPLE ASSAULT	2,731	2,545	-186	-6.8%
THREAT/INTIMIDATION	0	0	0	N/A
SIMPLE STALKING	0	0	0	N/A
TOTAL	3,824	3,541	-283	-7.4%

DOMESTIC VIOLENCE ARREST COMPARISON 2004-2005

	2004	2005	DIFF	%
MURDER	5	3	-2	-40.0%
MANSLAUGHTER	0	0	0	0.0%
FORCIBLE RAPE	17	22	5	29.4%
FORCIBLE SODOMY	0	2	2	N/A
FORCIBLE FONDLING	8	7	-1	-12.5%
AGGRAVATED ASSAULT	764	757	-7	-0.9%
AGGRAVATED STALKING	11	20	9	81.8%
SIMPLE ASSAULT	1,788	1,873	85	4.8%
THREAT/INTIMIDATION	0	0	0	N/A
SIMPLE STALKING	0	0	0	N/A
TOTAL	2,593	2,684	91	3.5%

DOMESTIC VIOLENCE CLOSURE RATE 2004

	OFFENSES	ARRESTS	RATE
MURDER	6	5	83.3%
MANSLAUGHTER	0	0	N/A
FORCIBLE RAPE	33	17	51.5%
FORCIBLE SODOMY	1	0	0.0%
FORCIBLE FONDLING	20	8	40.0%
AGGRAVATED ASSAULT	1,017	764	75.1%
AGGRAVATED STALKING	16	11	68.8%
SIMPLE ASSAULT	2,731	1,788	65.5%
THREAT/INTIMIDATION	0	0	N/A
SIMPLE STALKING	0	0	N/A
TOTAL	3,824	2,593	67.8%

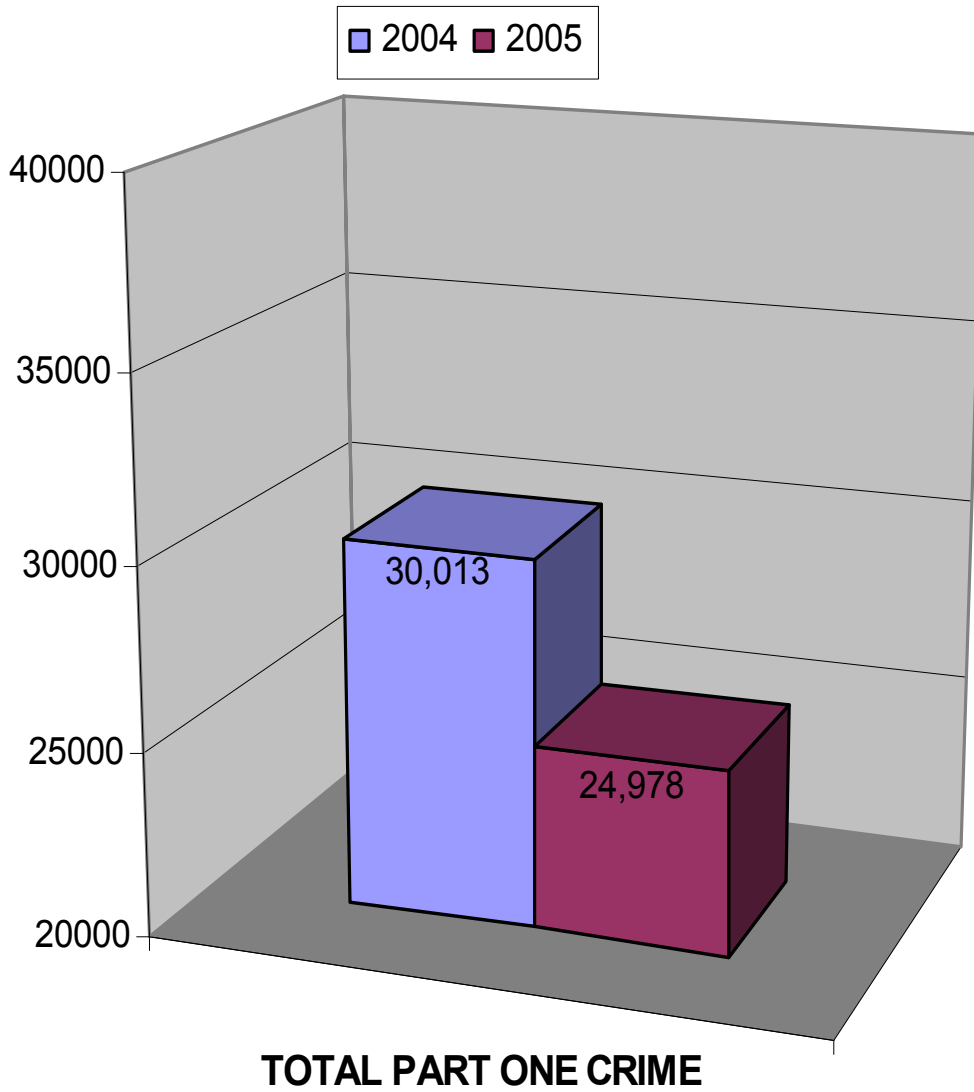
DOMESTIC VIOLENCE CLOSURE RATE 2005

	OFFENSES	ARRESTS	RATE
MURDER	4	3	75.0%
MANSLAUGHTER	0	0	N/A
FORCIBLE RAPE	43	22	51.2%
FORCIBLE SODOMY	2	2	100.0%
FORCIBLE FONDLING	21	7	33.3%
AGGRAVATED ASSAULT	906	757	83.6%
AGGRAVATED STALKING	20	20	100.0%
SIMPLE ASSAULT	2,545	1,873	73.6%
THREAT/INTIMIDATION	0	0	N/A
SIMPLE STALKING	0	0	N/A
TOTAL	3,541	2,684	75.8%

DOM VIOL CLOSURE RATE COMPARISON 2004-2005

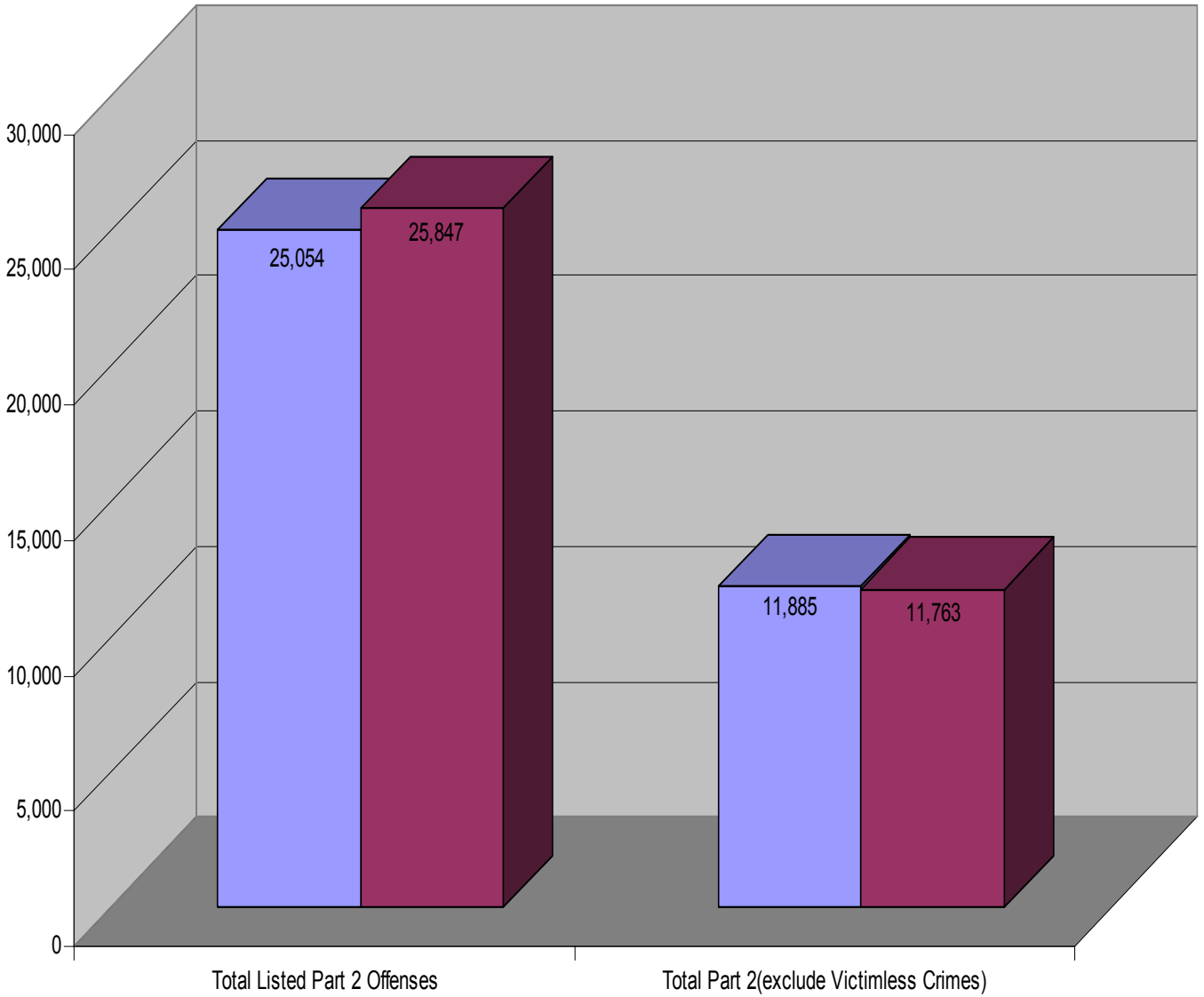
	2004	2005	DIFF
MURDER	83.3%	75.0%	-8.3%
MANSLAUGHTER	N/A	N/A	N/A
FORCIBLE RAPE	51.5%	51.2%	-0.3%
FORCIBLE SODOMY	0.0%	100.0%	100.0%
FORCIBLE FONDLING	40.0%	33.3%	-6.7%
AGGRAVATED ASSAULT	75.1%	83.6%	8.5%
AGGRAVATED STALKING	68.8%	100.0%	31.2%
SIMPLE ASSAULT	65.5%	73.6%	8.1%
THREAT/INTIMIDATION	0.0%	0.0%	0.0%
SIMPLE STALKING	0.0%	0.0%	0.0%
TOTAL	67.8%	75.8%	8.0%

TAMPA POLICE DEPARTMENT 2005 ANNUAL CRIME REPORT

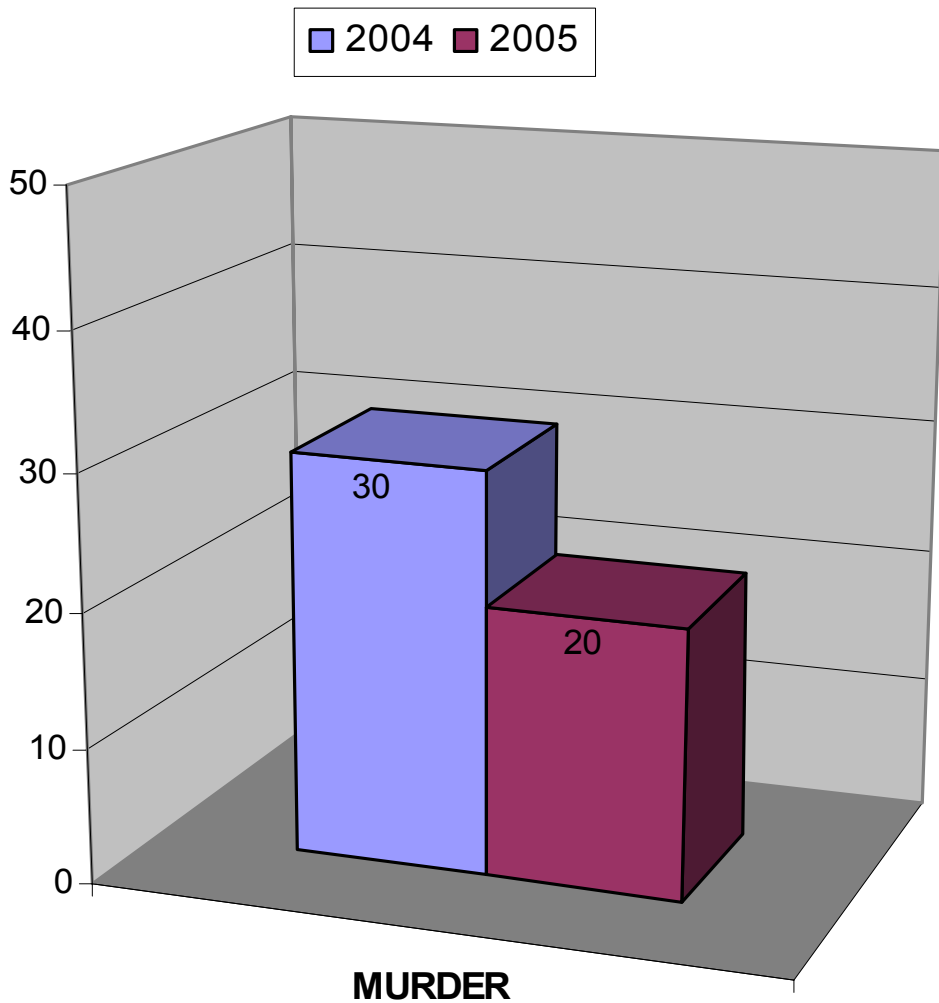


Part II Totals

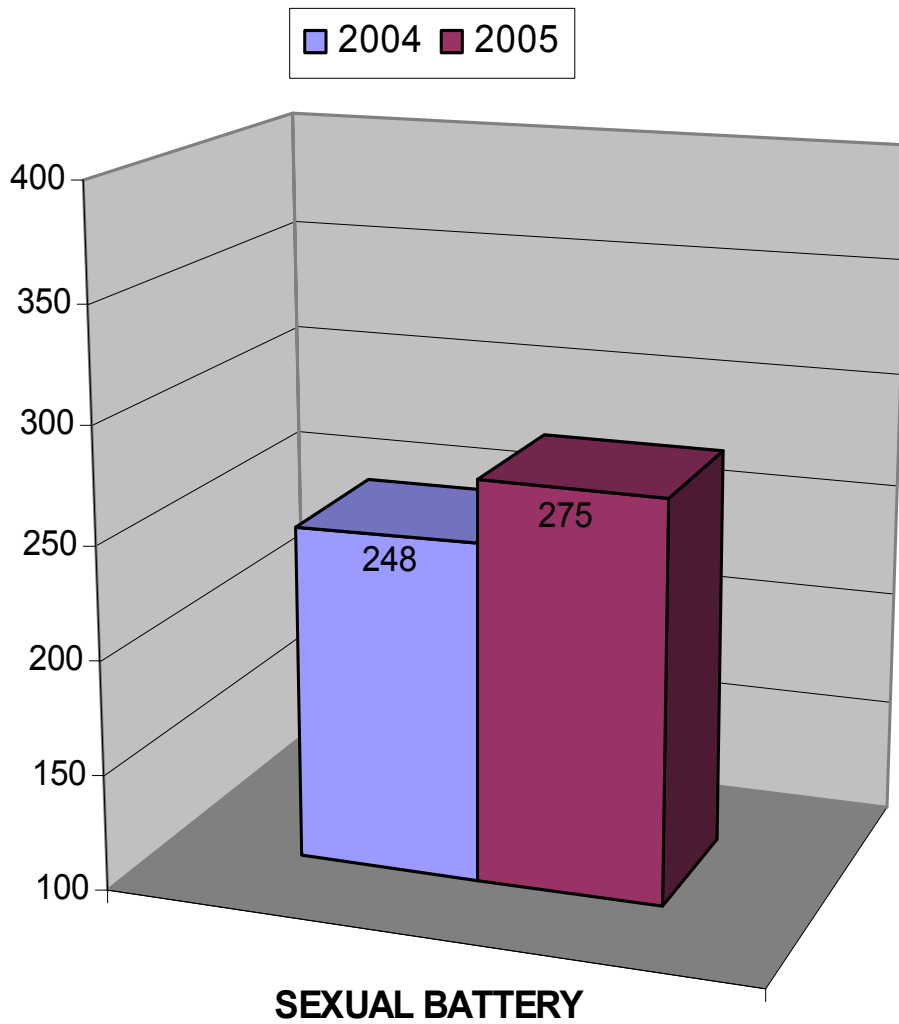
2004 2005



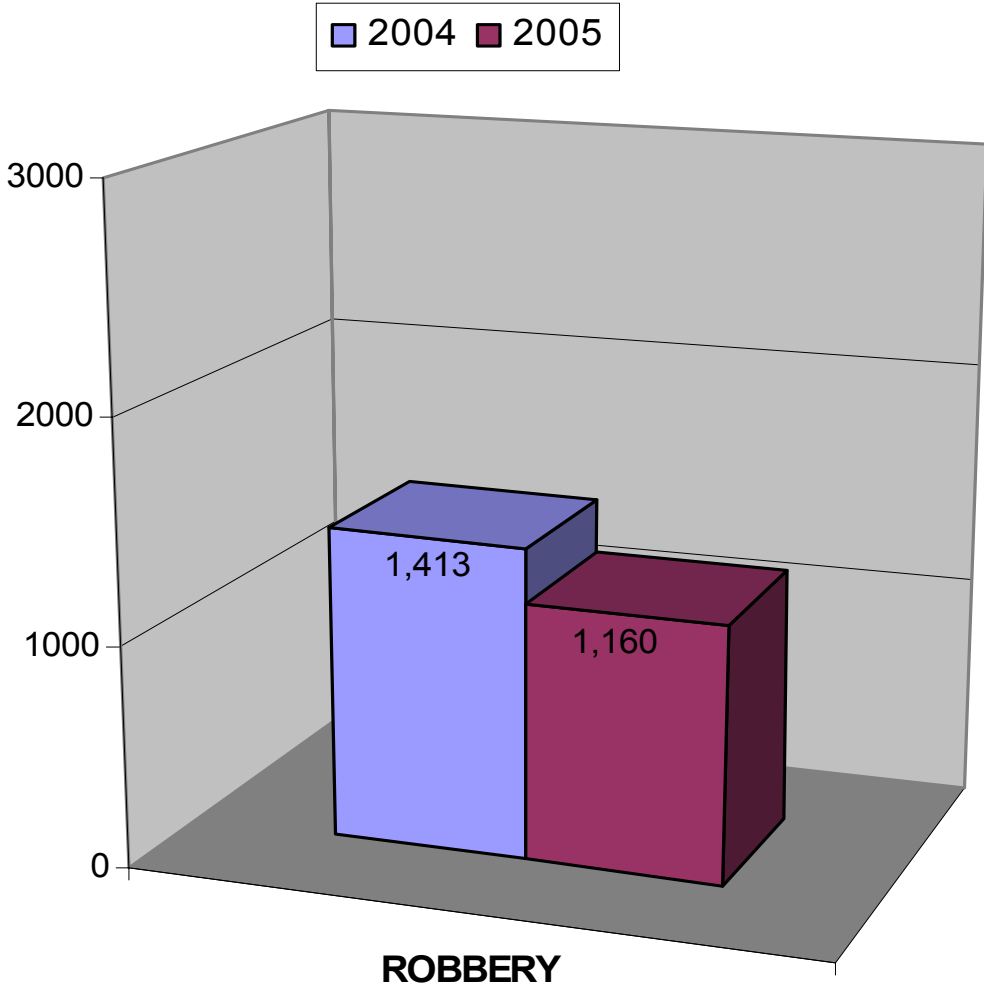
TAMPA POLICE DEPARTMENT 2005 ANNUAL CRIME REPORT



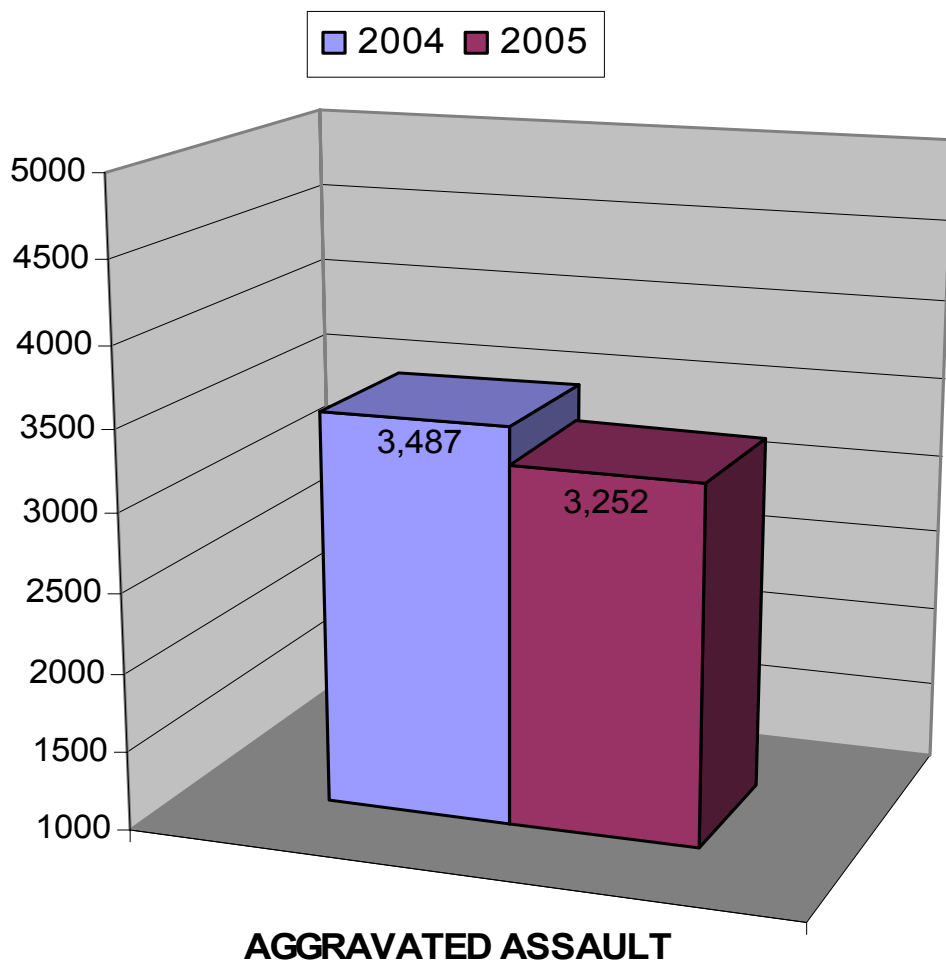
TAMPA POLICE DEPARTMENT 2005 ANNUAL CRIME REPORT



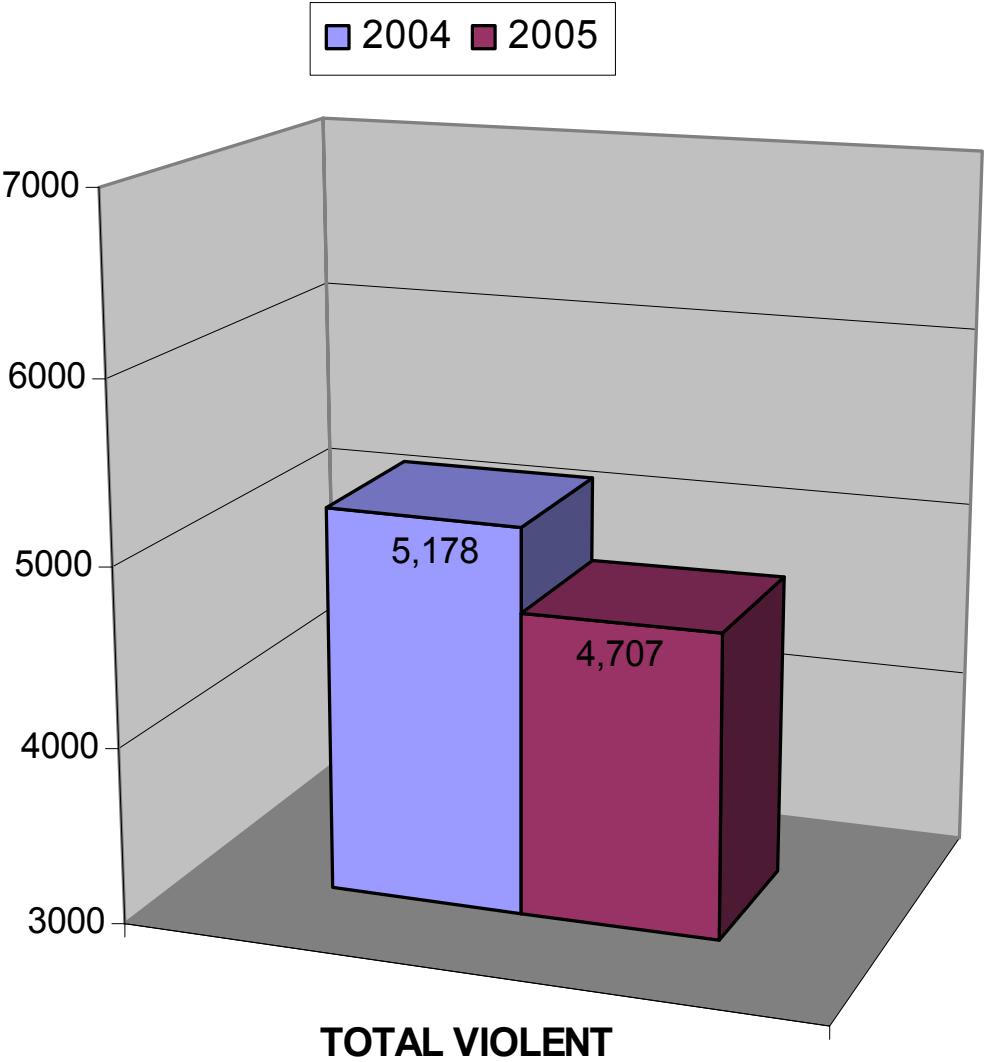
TAMPA POLICE DEPARTMENT 2005 ANNUAL CRIME REPORT



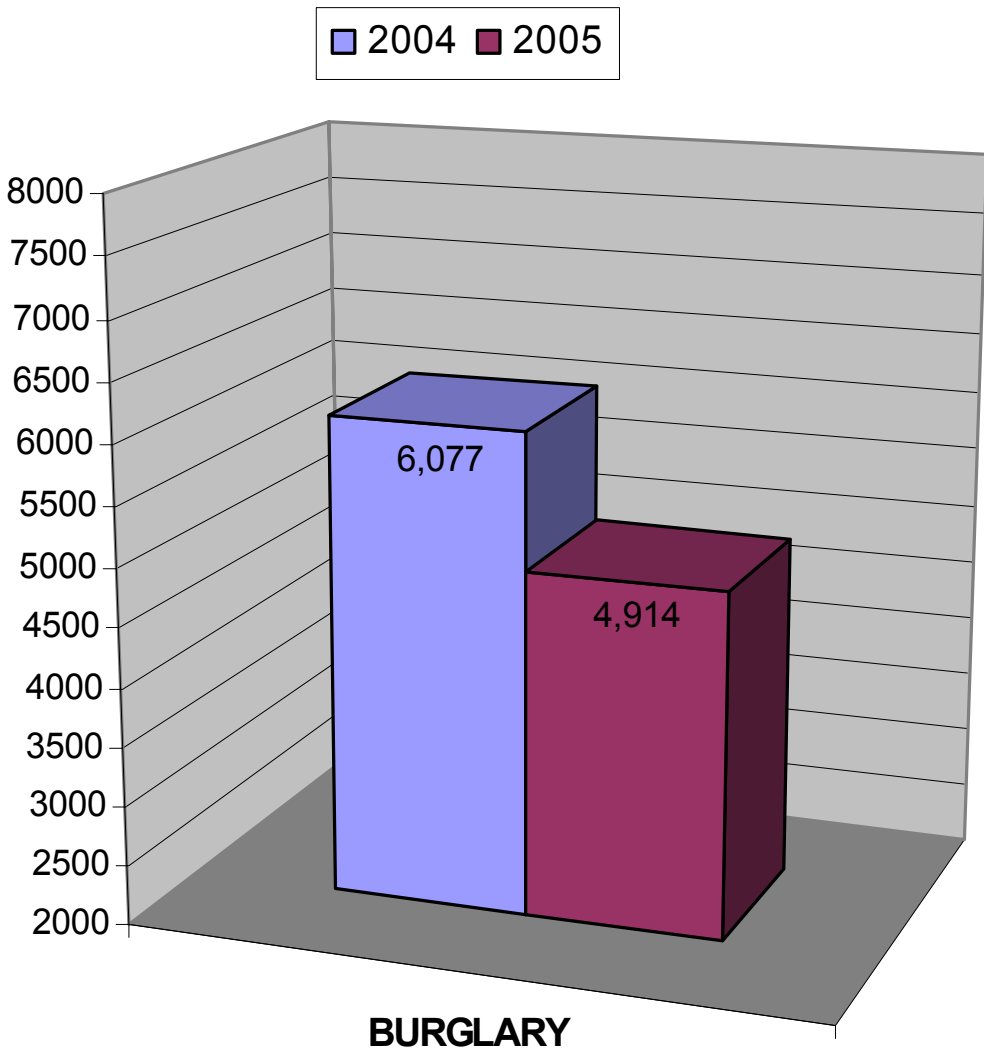
TAMPA POLICE DEPARTMENT 2005 ANNUAL CRIME REPORT



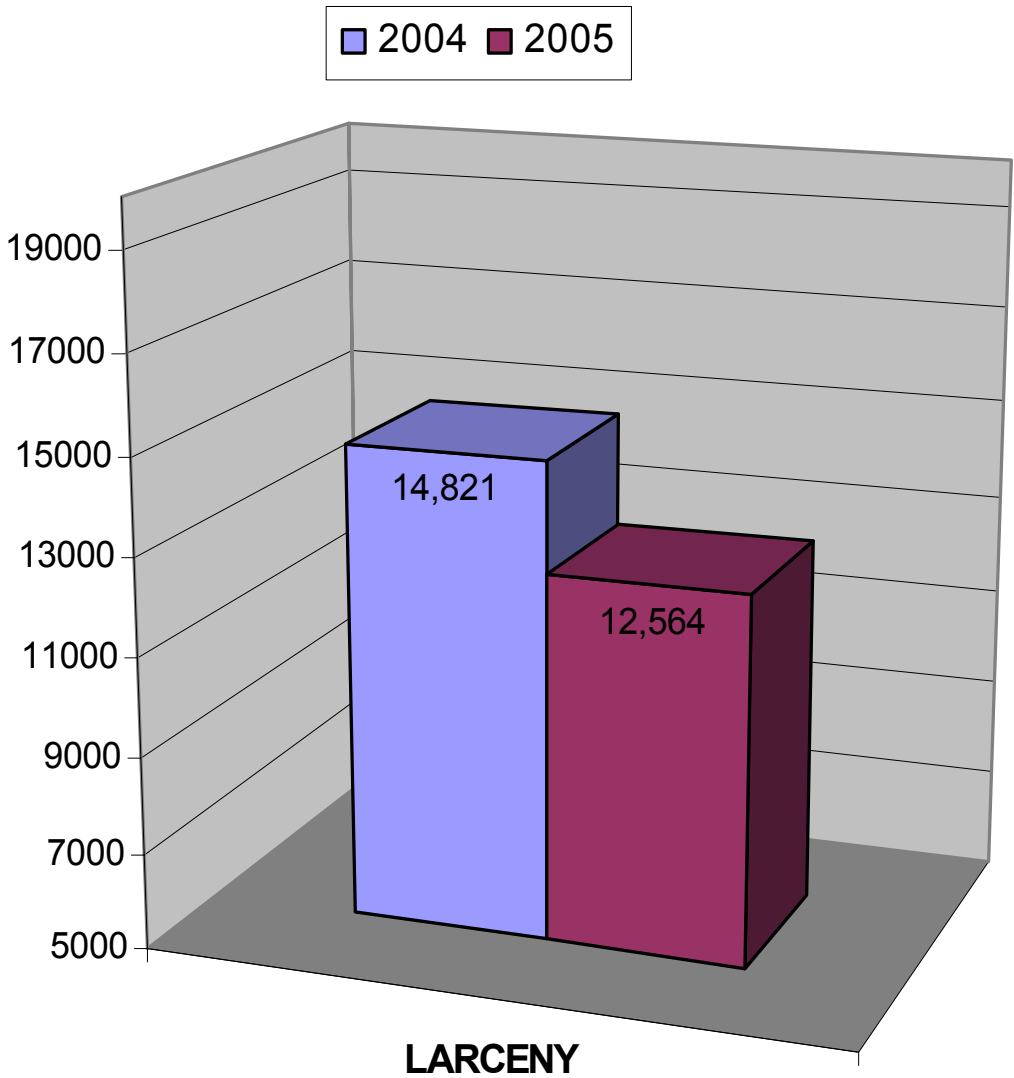
TAMPA POLICE DEPARTMENT 2005 ANNUAL CRIME REPORT



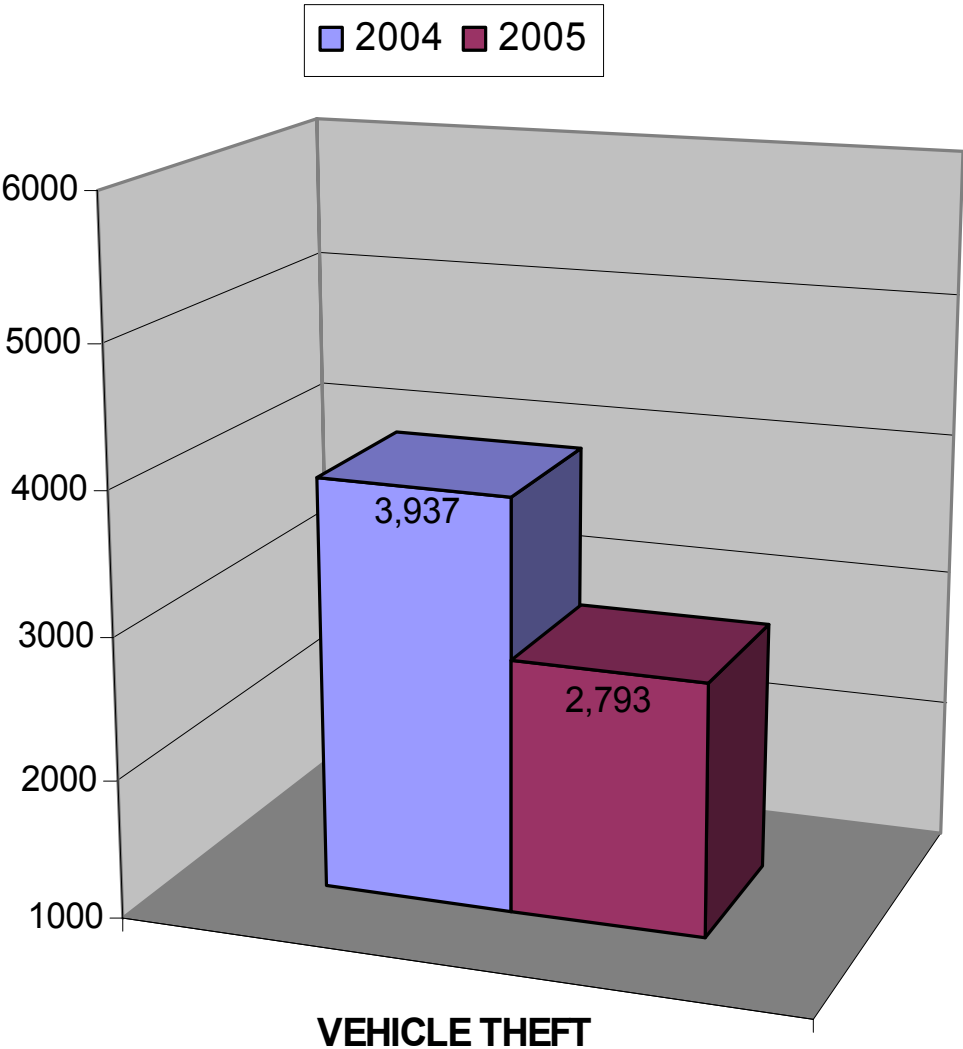
TAMPA POLICE DEPARTMENT 2005 ANNUAL CRIME REPORT



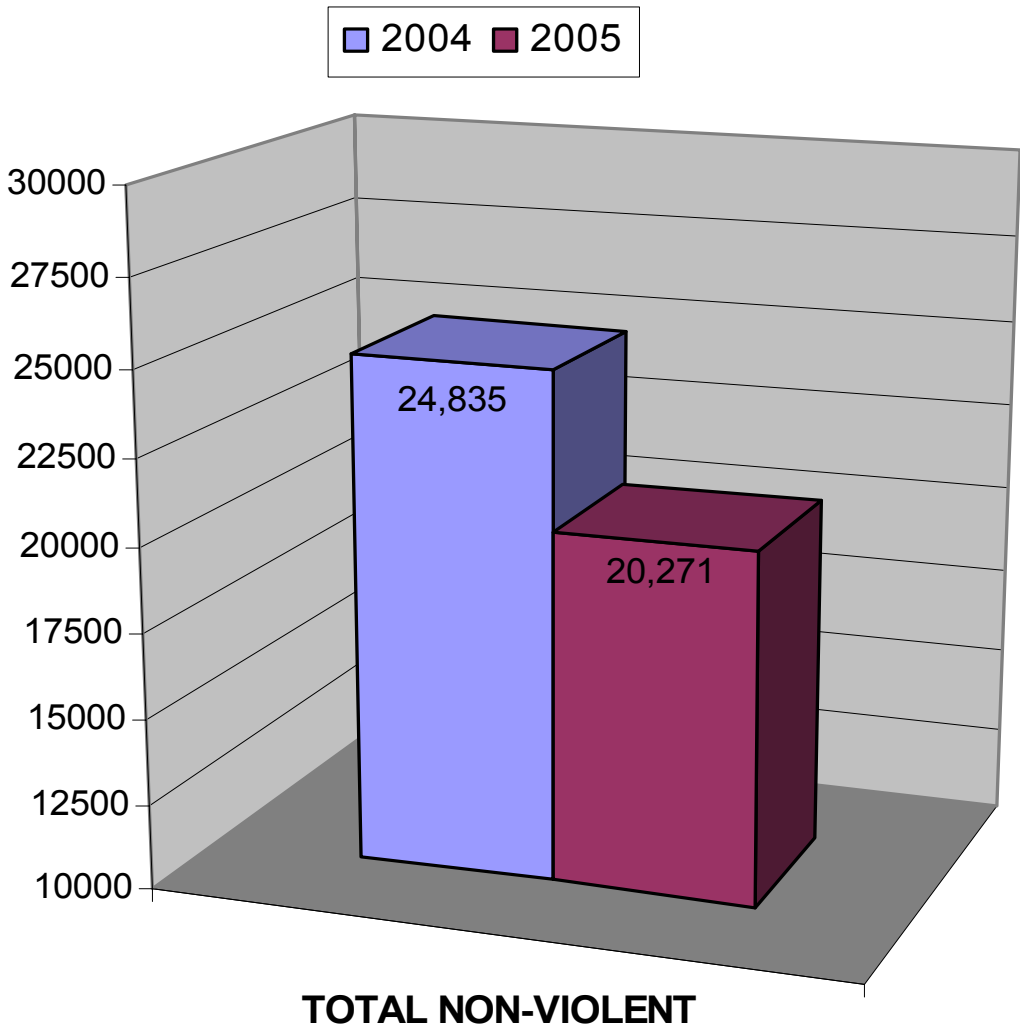
TAMPA POLICE DEPARTMENT 2005 ANNUAL CRIME REPORT



TAMPA POLICE DEPARTMENT 2005 ANNUAL CRIME REPORT

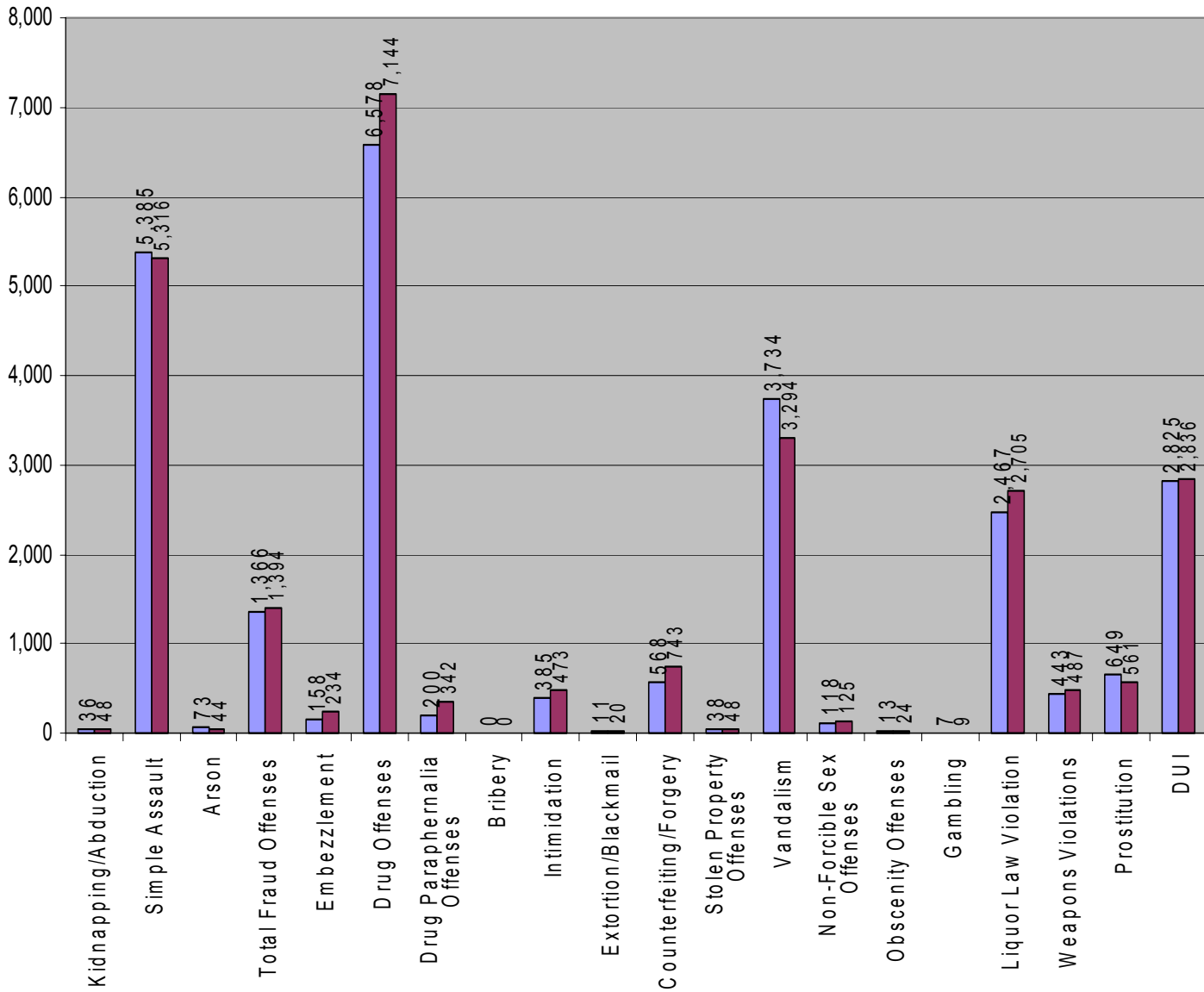


TAMPA POLICE DEPARTMENT 2005 ANNUAL CRIME REPORT



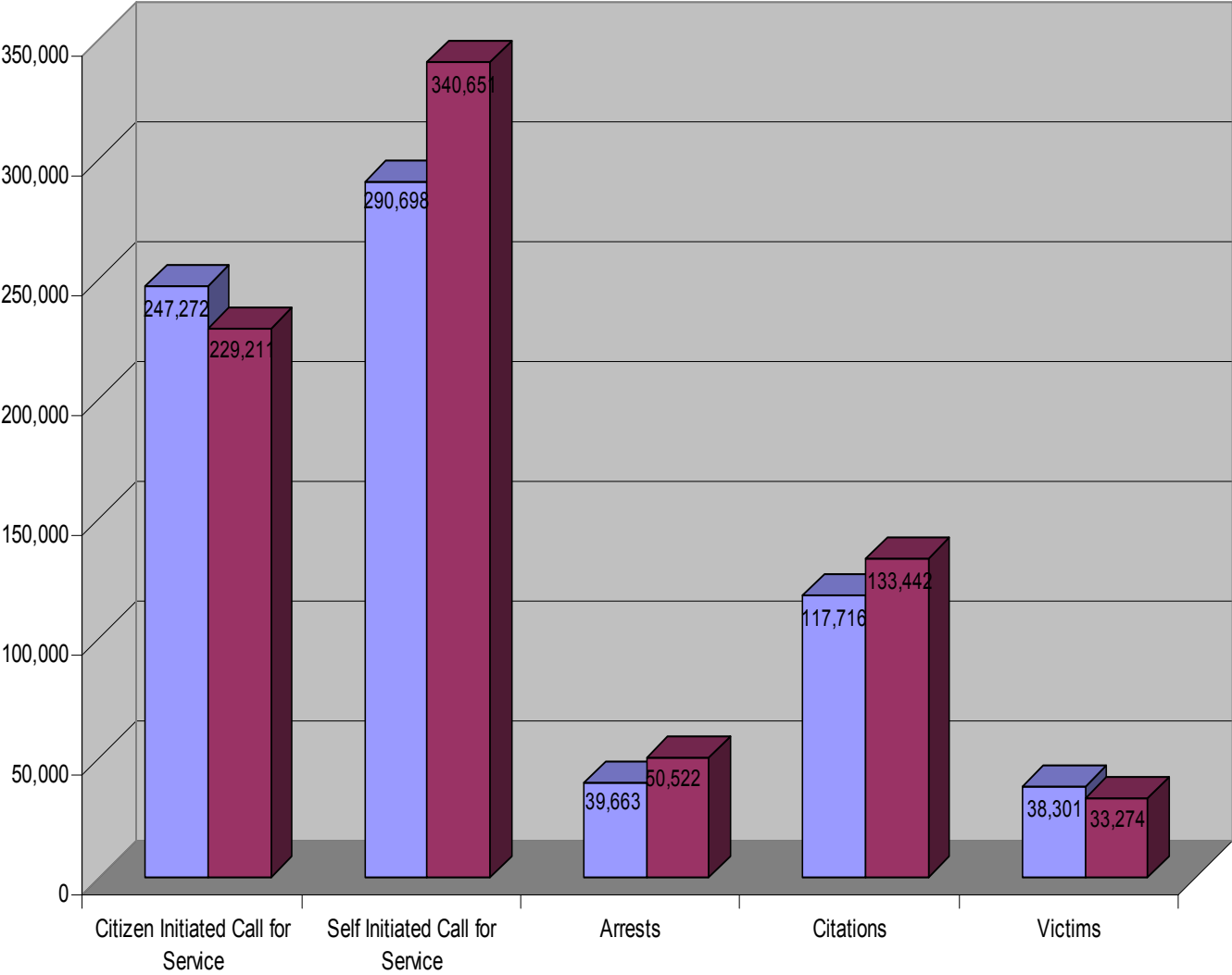
Part II Offenses

2004 2005



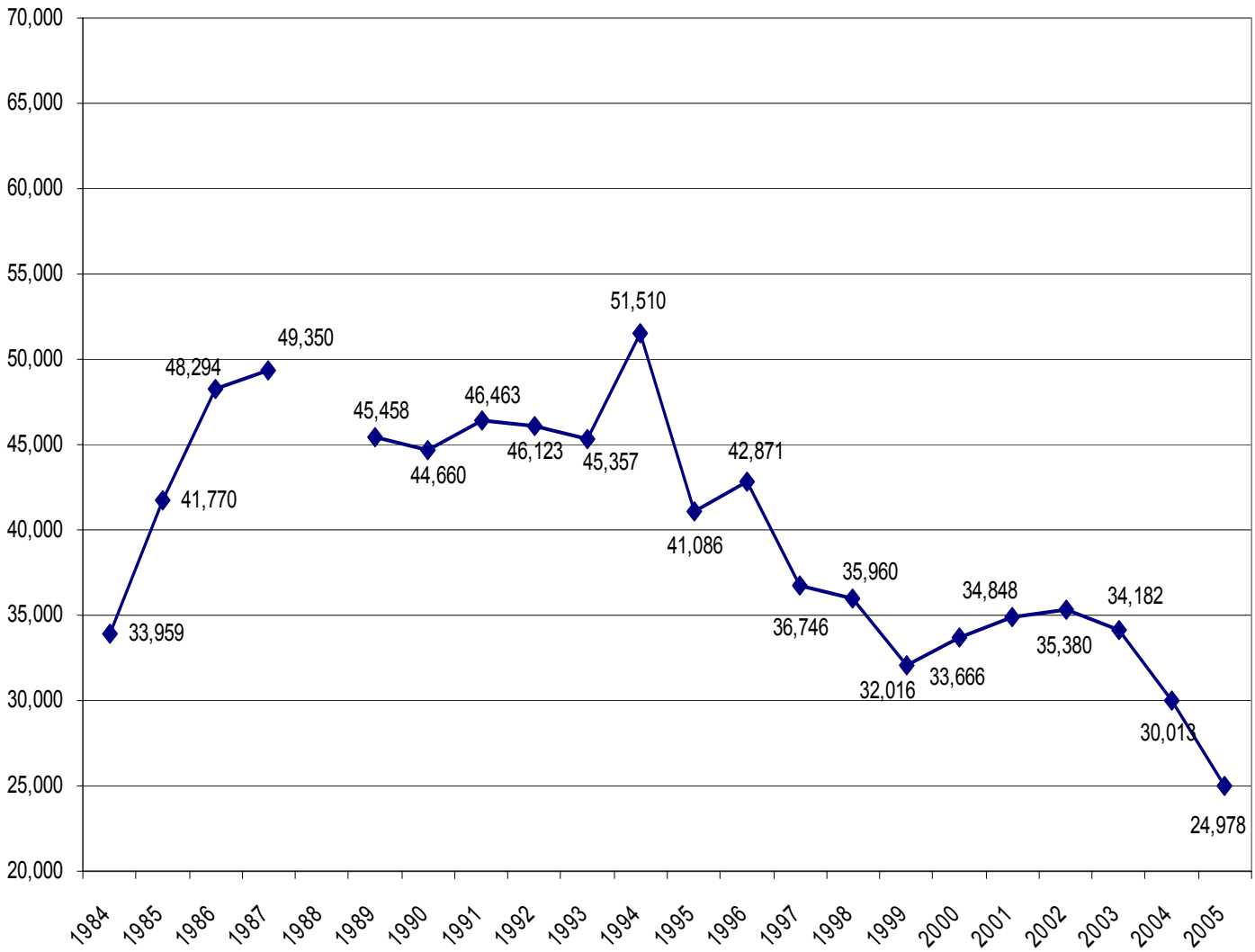
Productivity Comparison

2004 2005



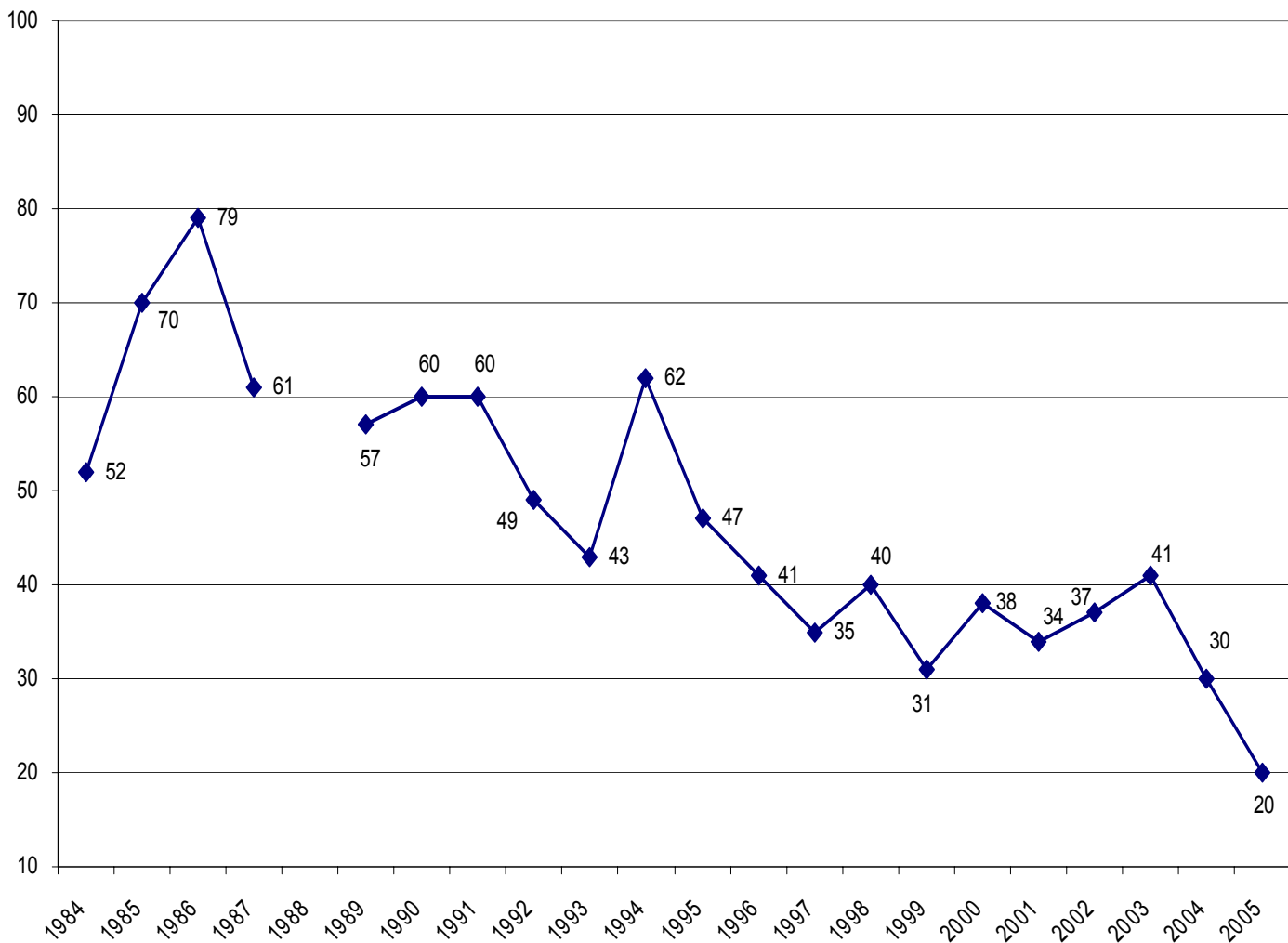
ANNUAL TOTAL PART 1 CRIME COMPARISON IN TAMPA

No Data Available for 1988



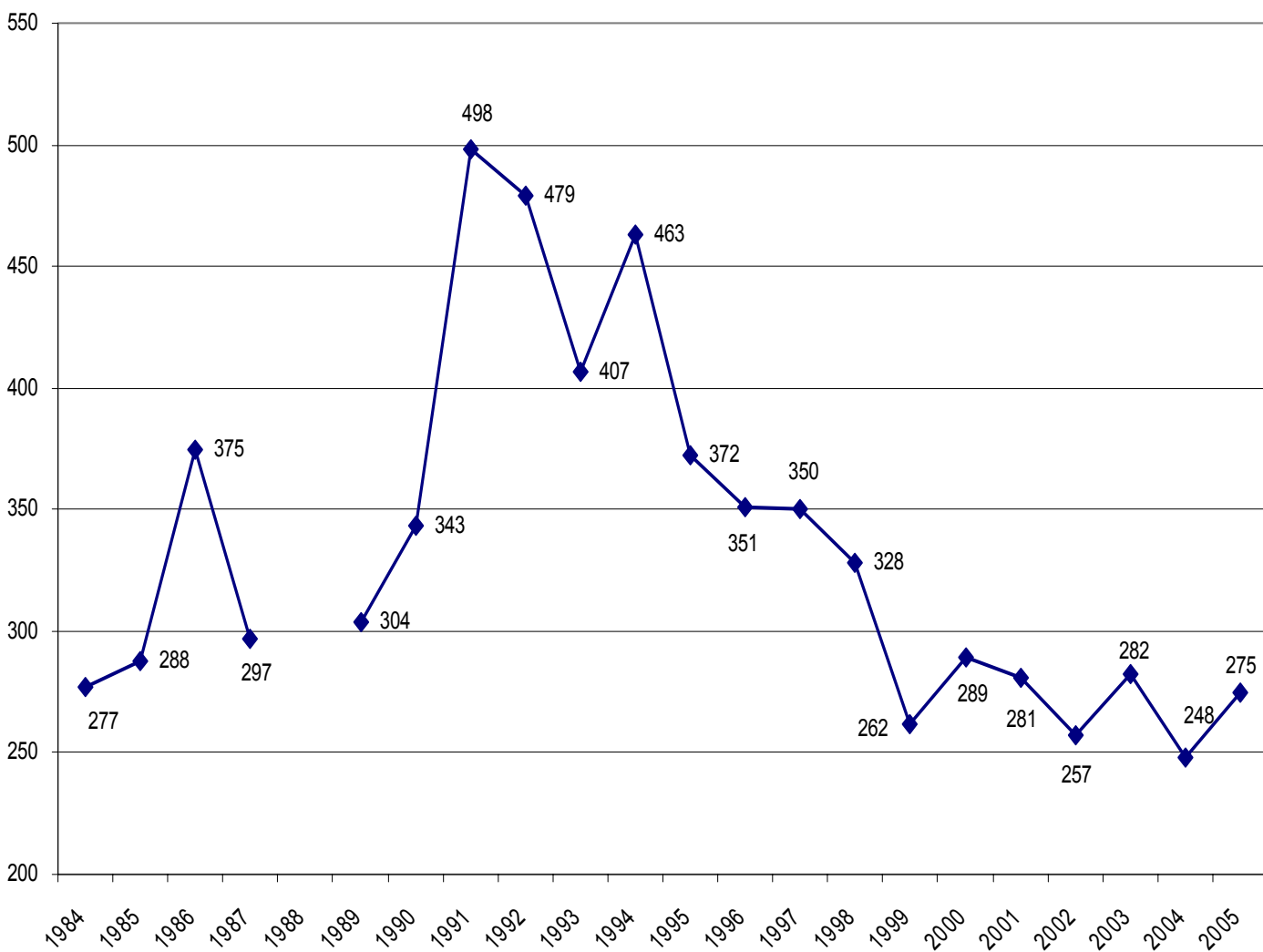
ANNUAL MURDER COMPARISON IN TAMPA

No Data Available for 1988



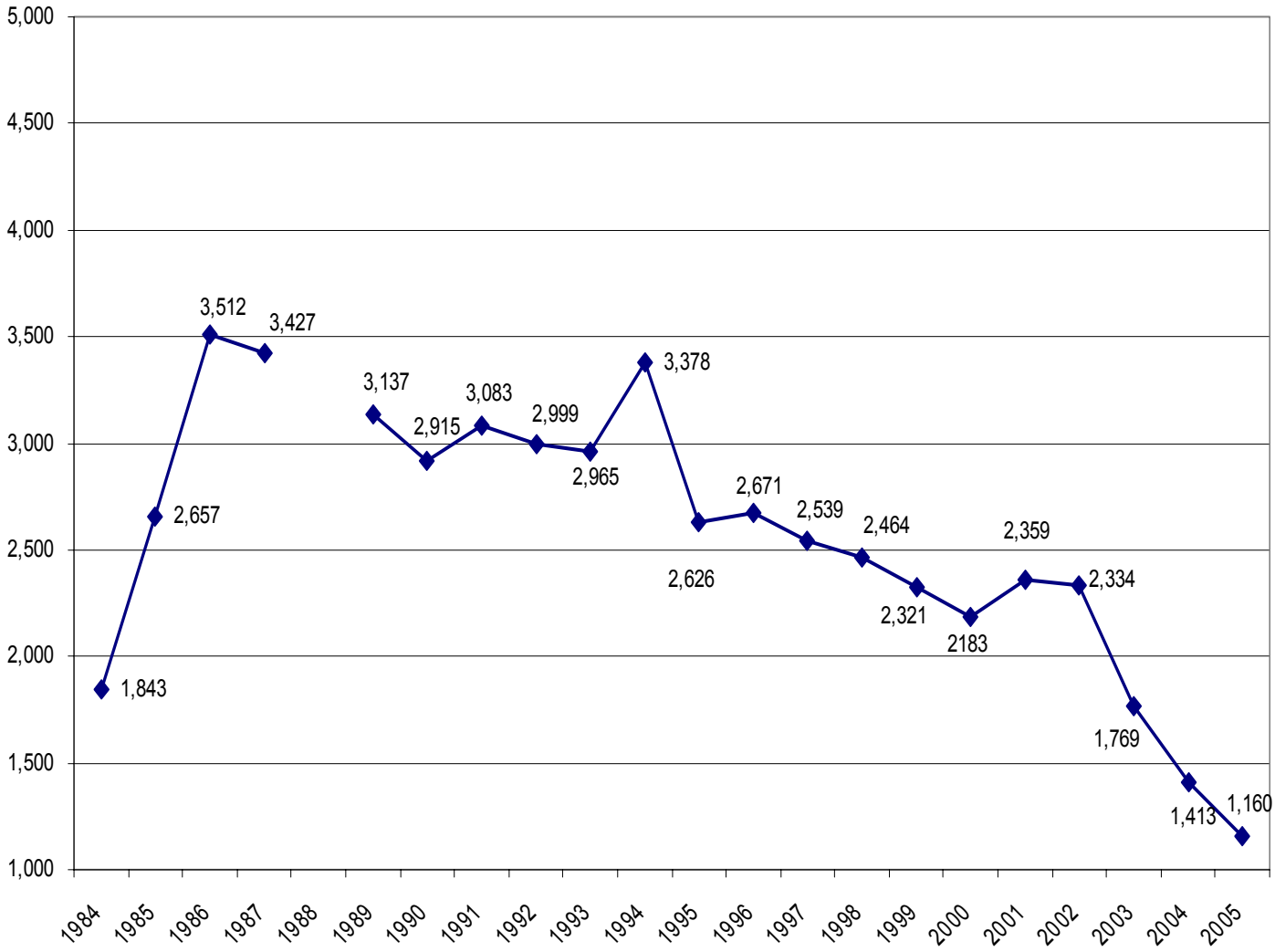
ANNUAL SEXUAL BATTERY COMPARISON IN TAMPA

No Data Available for 1988



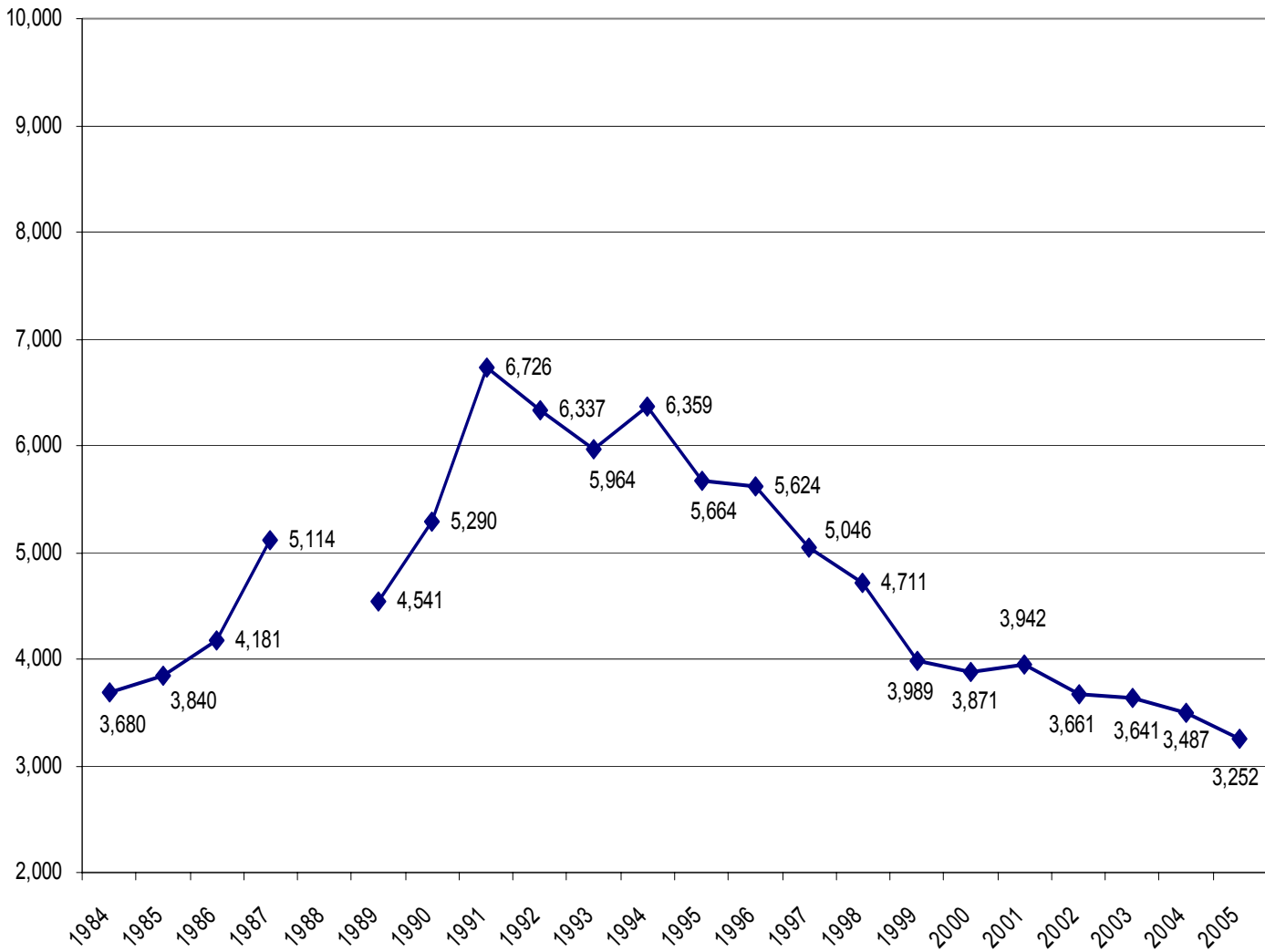
ANNUAL ROBBERY COMPARISON IN TAMPA

No Data Available for 1988



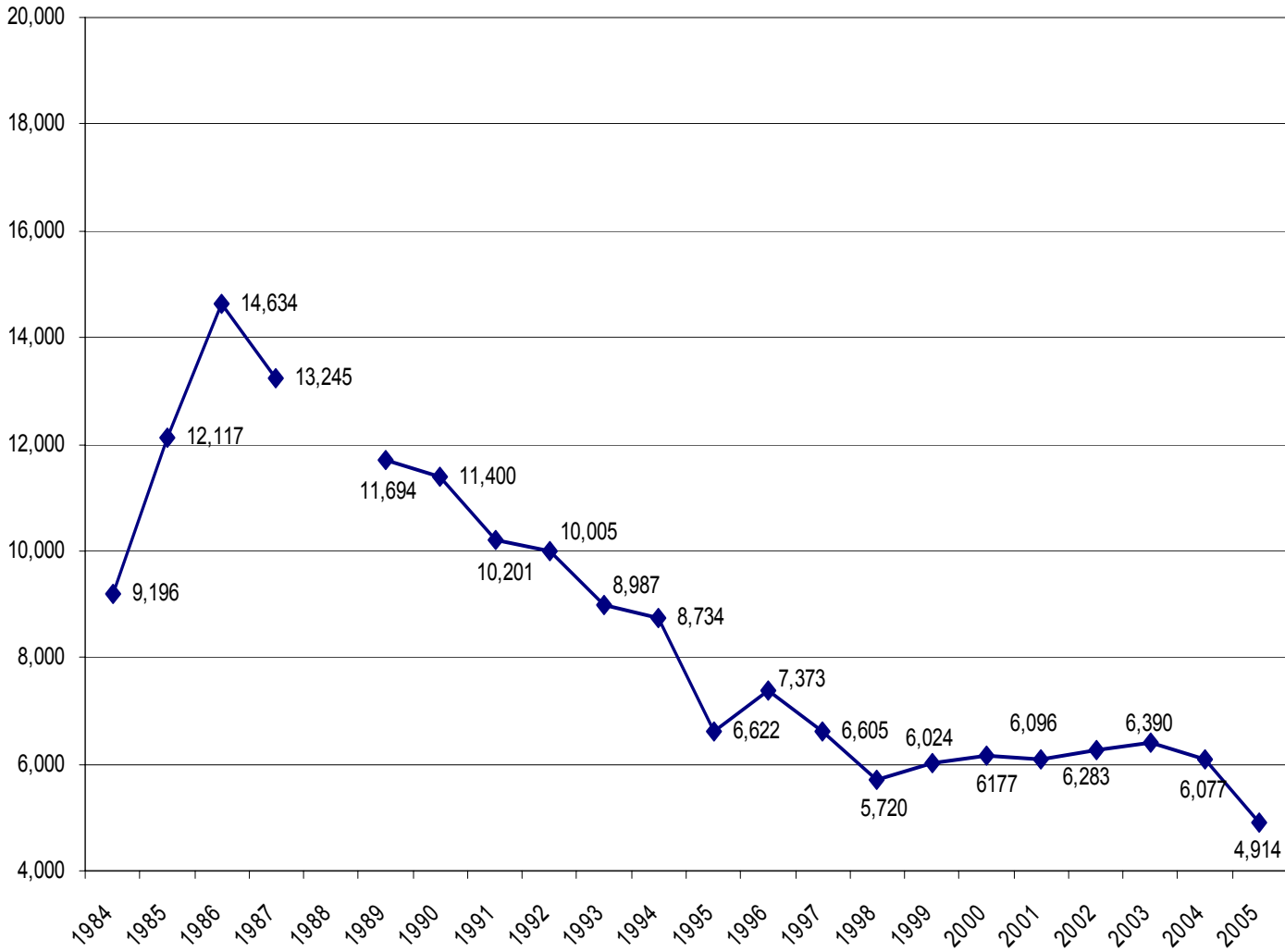
ANNUAL AGGRAVATED ASSAULT COMPARISON IN TAMPA

No Data Available for 1988



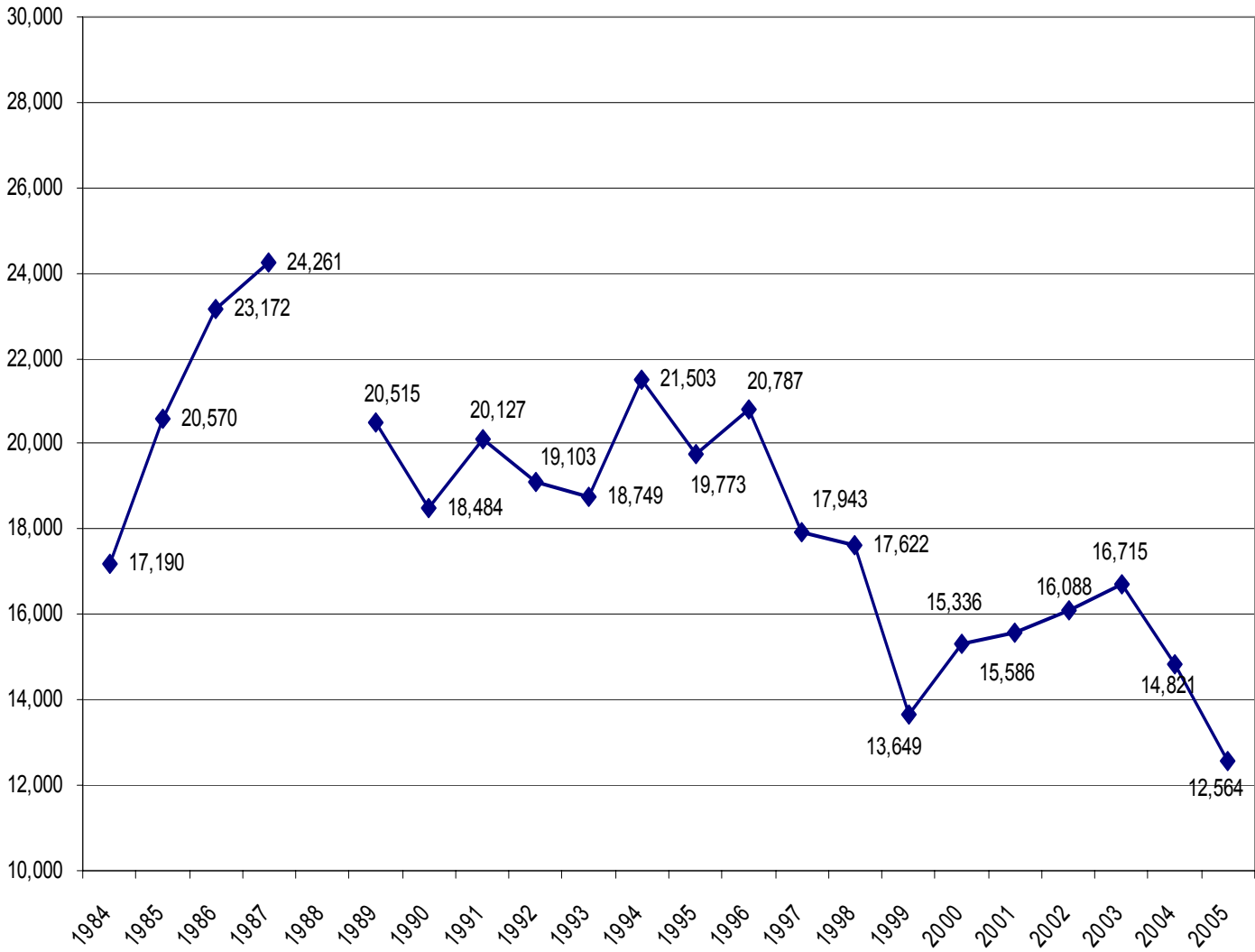
ANNUAL BURGLARY COMPARISON IN TAMPA

No Data Available for 1988



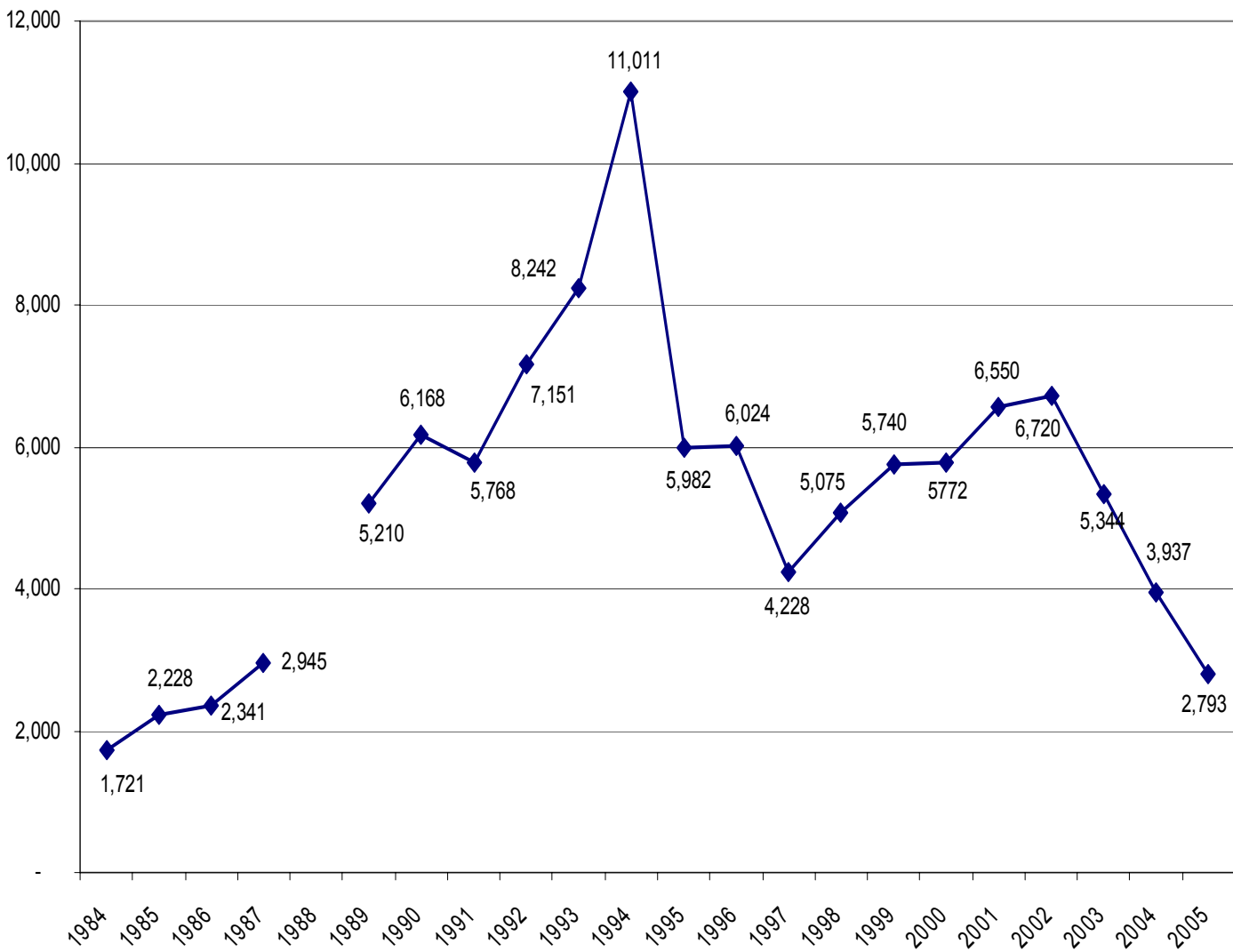
ANNUAL LARCENY COMPARISON IN TAMPA

No Data Available for 1988

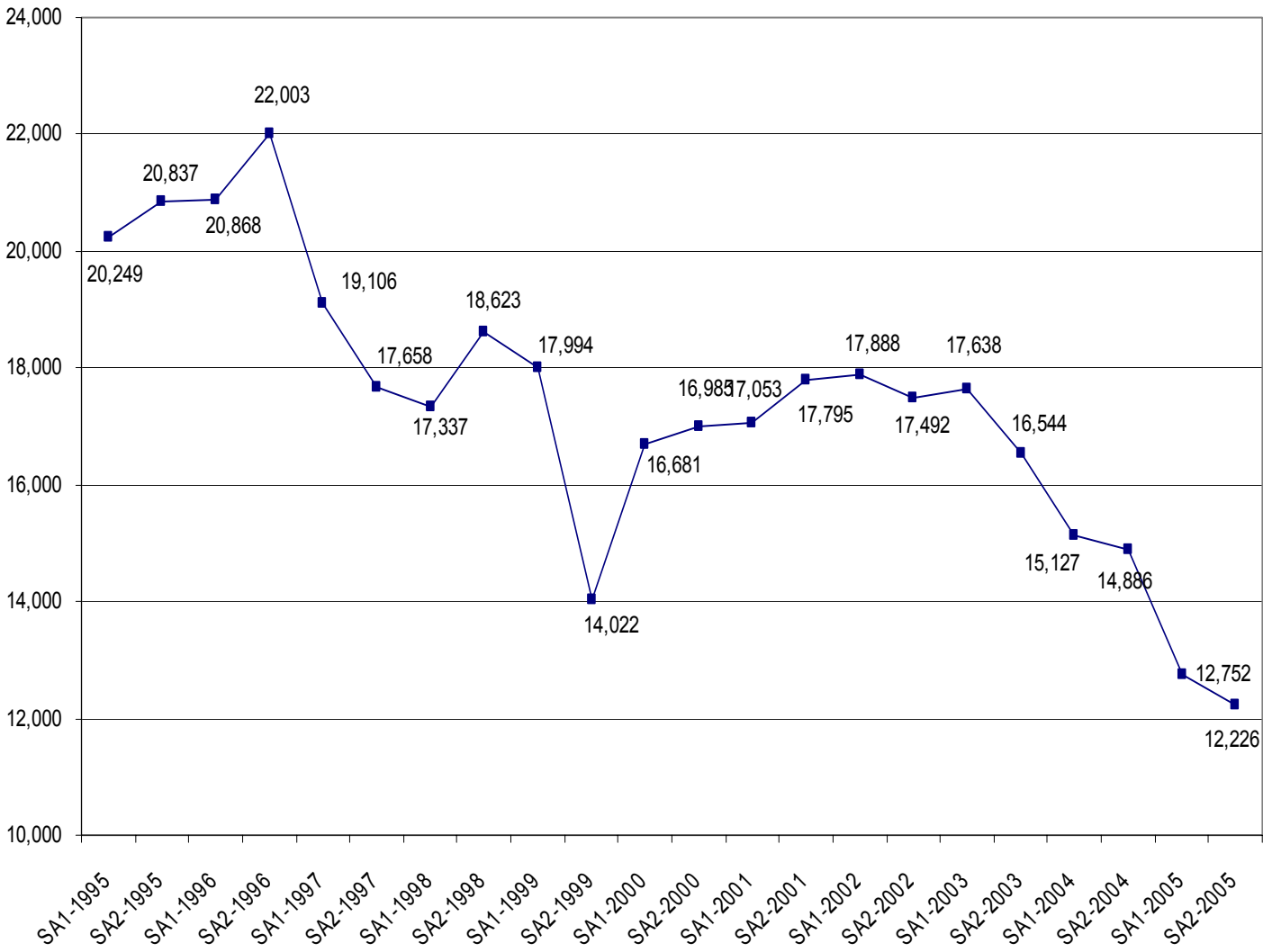


ANNUAL VEHICLE THEFT COMPARISON IN TAMPA

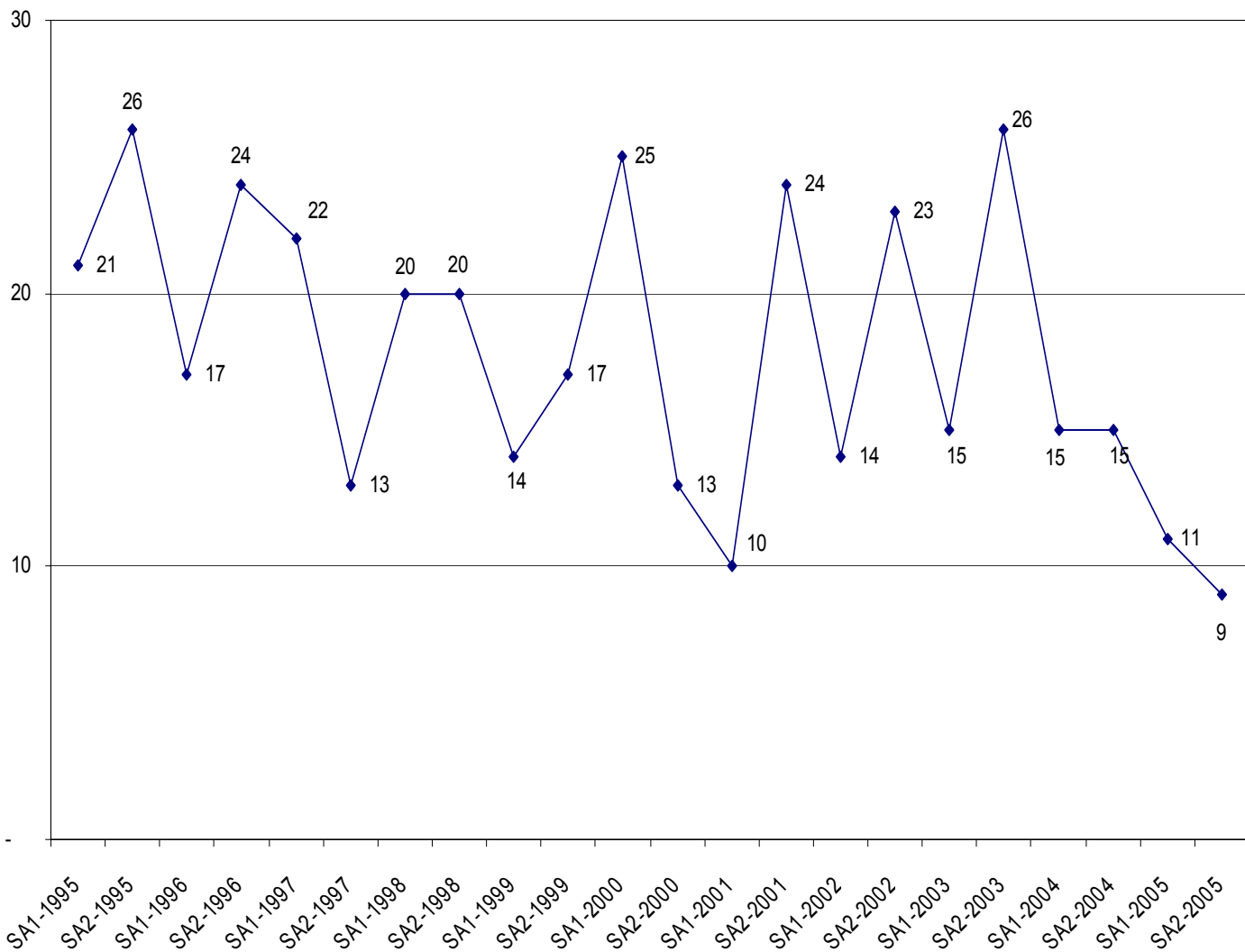
No Data Available for 1988



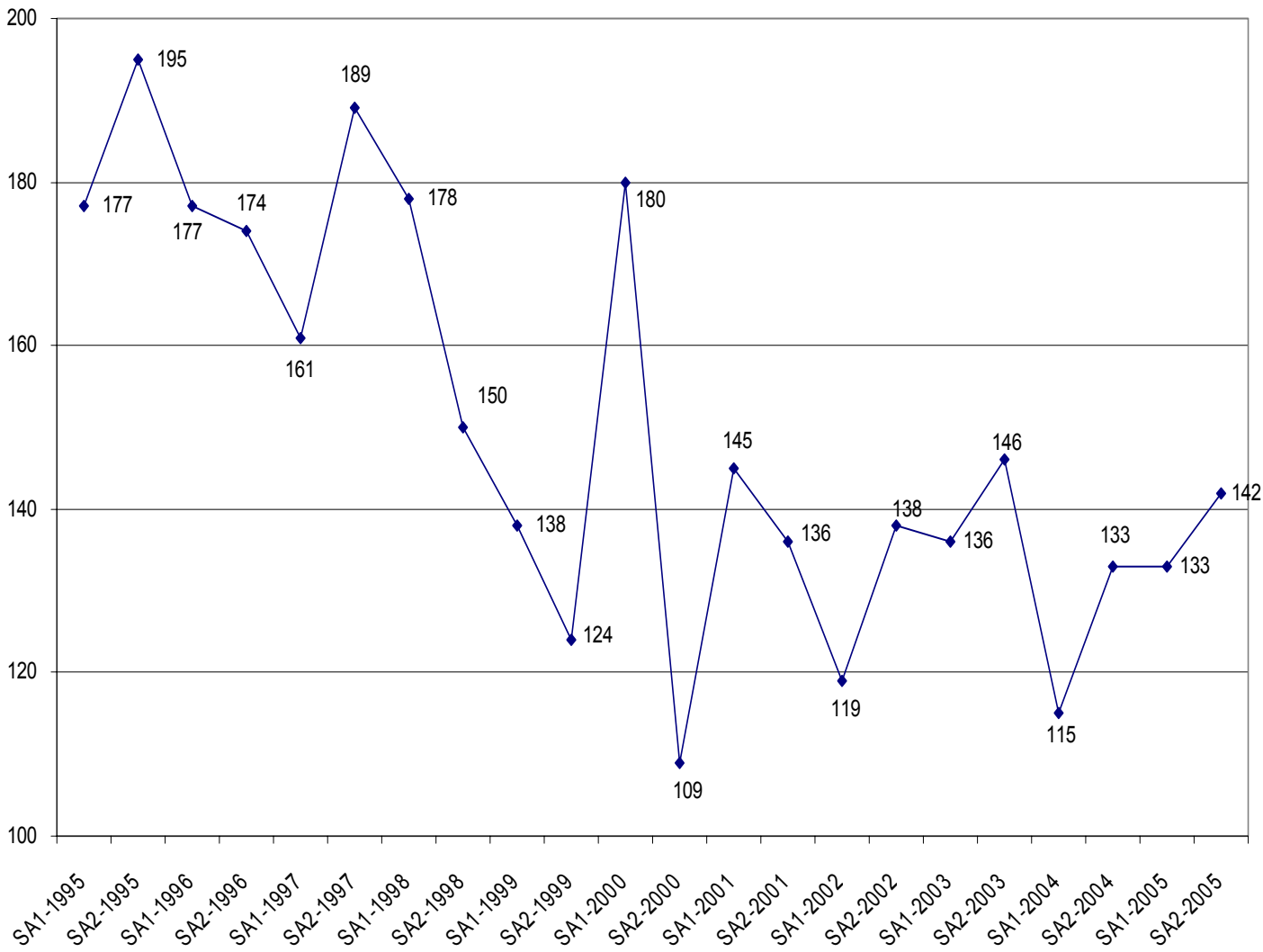
SEMI-ANNUAL TOTAL PART I CRIME COMPARISON IN TAMPA



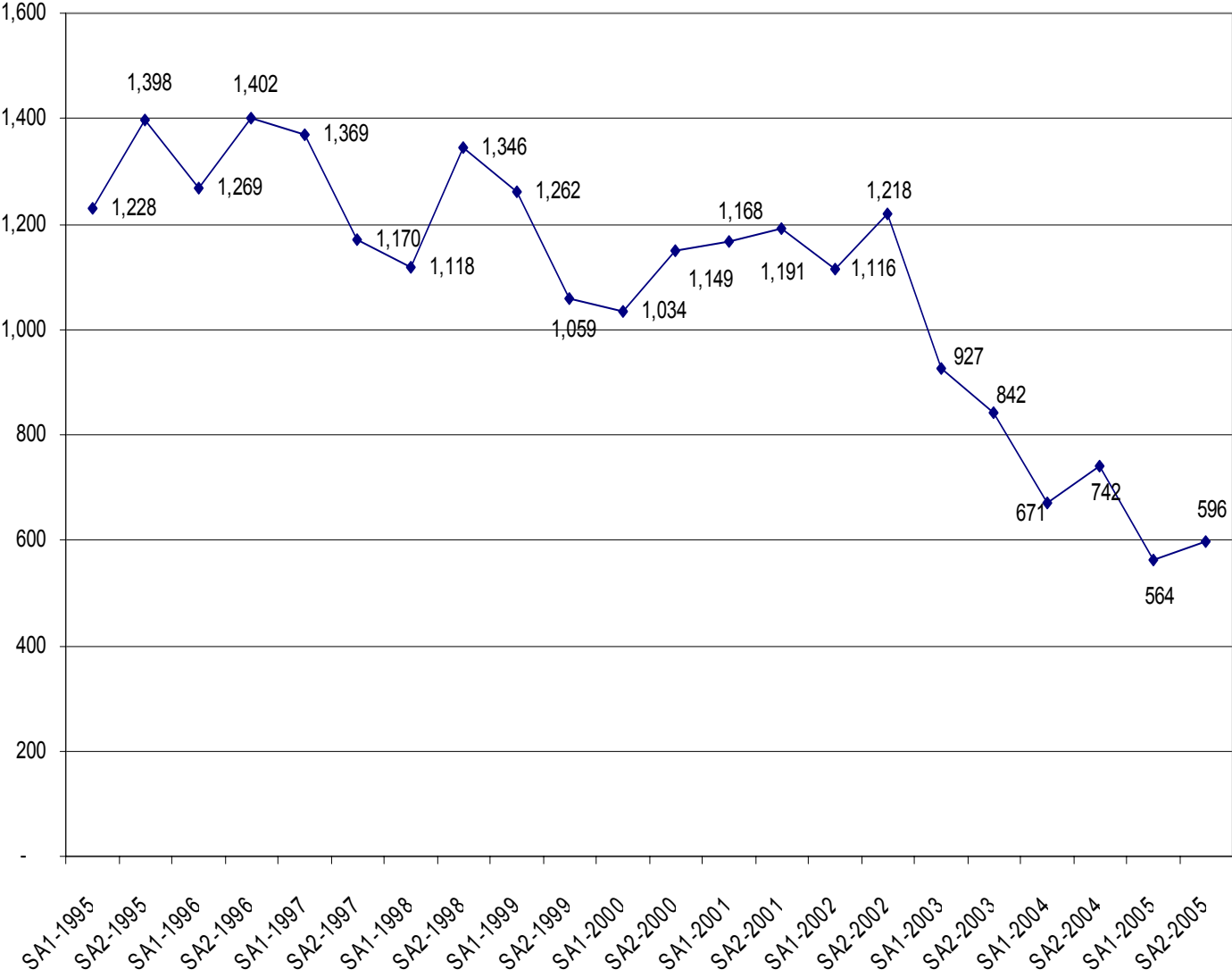
SEMI-ANNUAL MURDER COMPARISON IN TAMPA



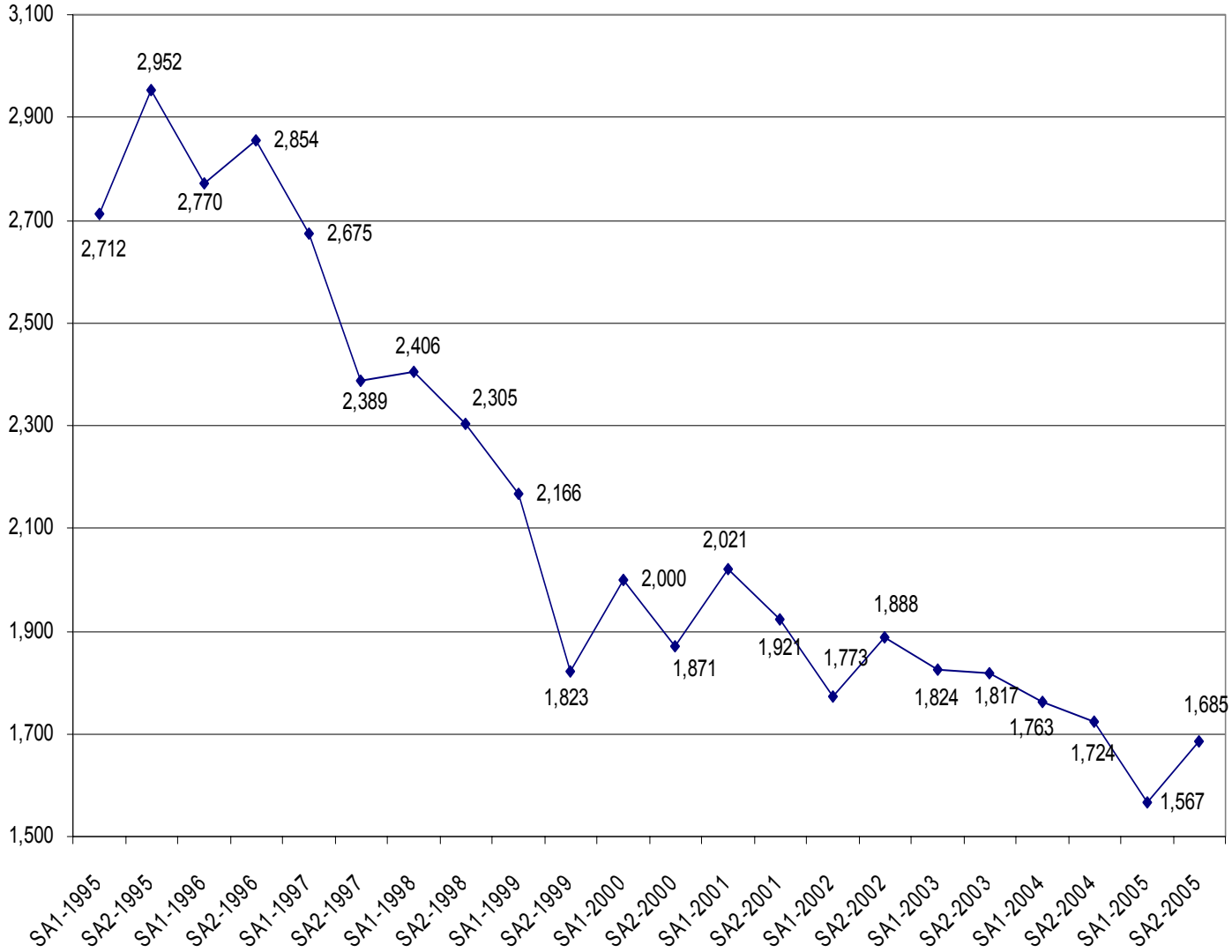
SEMI-ANNUAL SEXUAL ASSAULT COMPARISON IN TAMPA



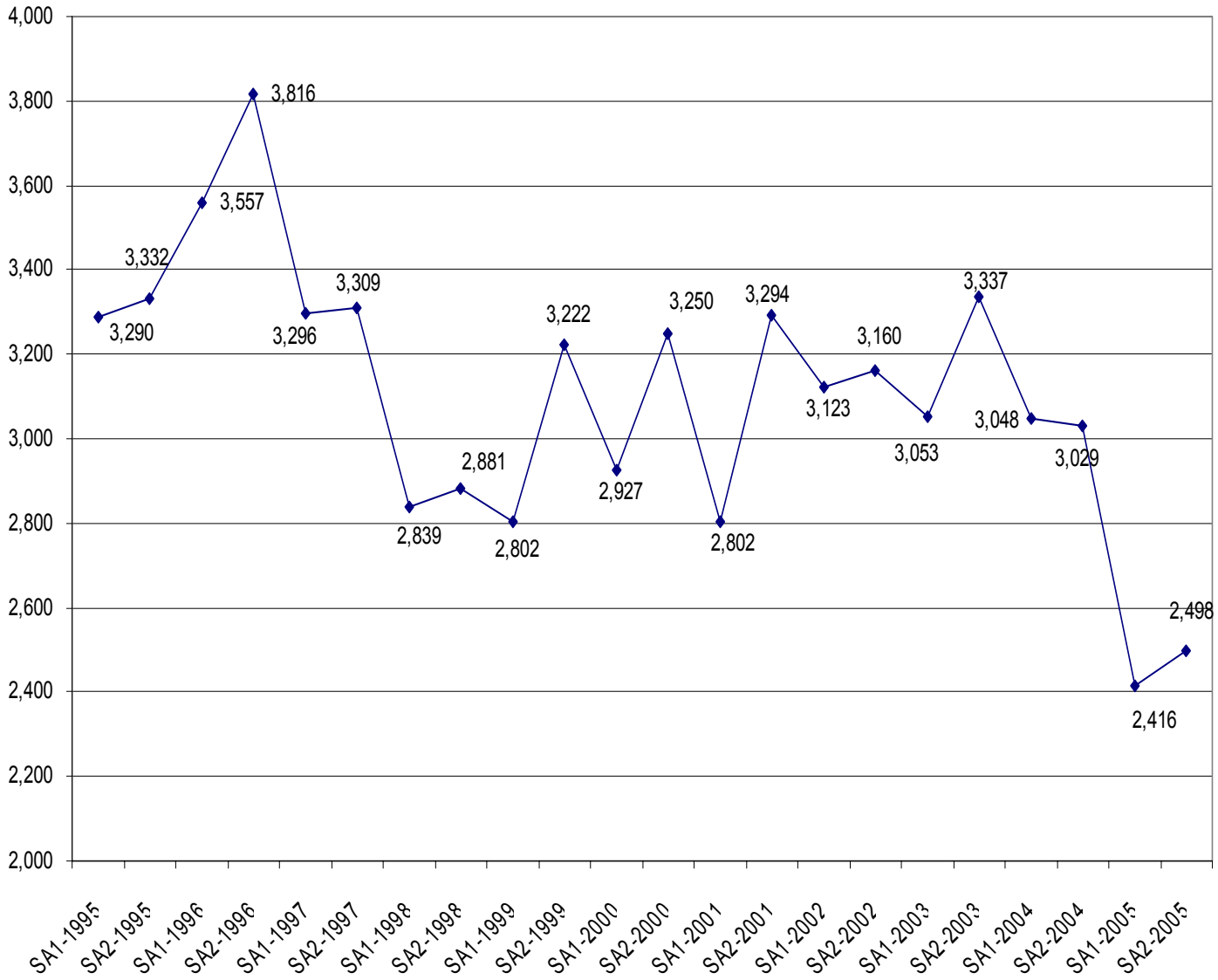
SEMI-ANNUAL ROBBERY COMPARISON IN TAMPA



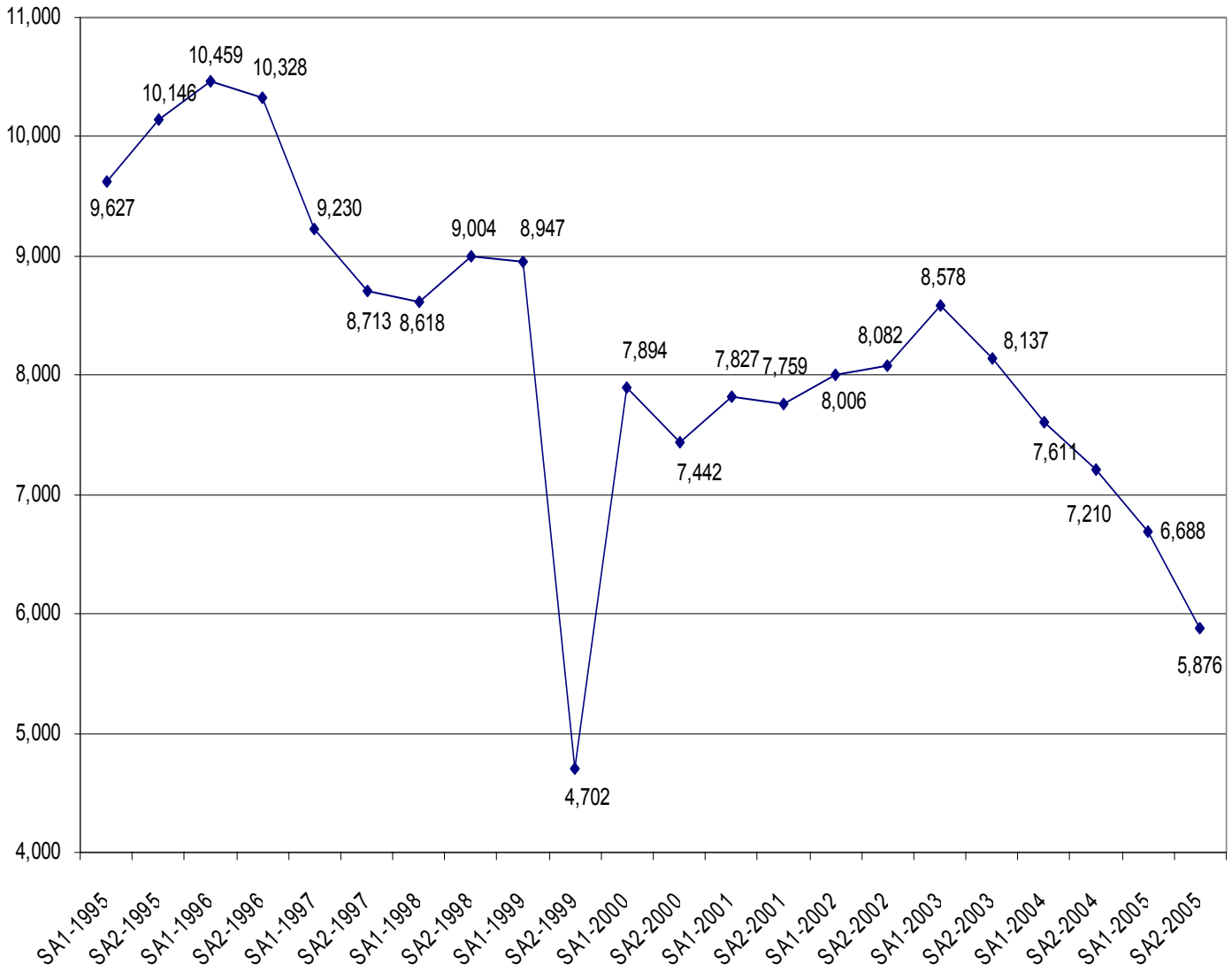
SEMI-ANNUAL AGGRAVATED ASSAULT COMPARISON IN TAMPA



SEMI-ANNUAL BURGLARY COMPARISON IN TAMPA



SEMI-ANNUAL LARCENY COMPARISON IN TAMPA



SEMI-ANNUAL VEHICLE THEFT COMPARISON IN TAMPA

