

TAMPA POLICE DEPARTMENT 2006 SEMI-ANNUAL CRIME REPORT



STEPHEN HOGUE
Chief of Police

Prepared by:
Analytical Crime Mapping Unit
August 2006

**TAMPA POLICE DEPARTMENT
2006 SEMI-ANNUAL CRIME REPORT
SUMMARY**

There were 1,407 fewer Part 1 Index crimes in the first half of 2006 compared to the first half of 2005. This significant difference equates to an 11.0 % decrease in Part 1 Crimes in the City of Tampa. Part 1 Index crimes include both violent and non-violent crime categories.

Violent crimes were up by 124 occurrences for the first half of 2006 compared to the first half of 2005. This represents a 5.5 % increase in violent crimes.

Robbery was slightly up by 2.7 % in the first half of 2006.

There were 4 more murders in the first half of 2006 compared to the same time period last year. This equates to a 36.4 % increase.

Aggravated Assault offenses increased by 9.1 %.

Sexual Battery decreased significantly by 27.8 % over the same period last year with 37 less offenses being reported.

Non-violent crimes significantly decreased by 1,531 offenses. This equates to a 14.6 % reduction in non-violent crimes over the same period in 2005.

Larceny offenses including auto burglaries decreased by 18.7 % for the first half of 2006 compared to the first half of 2005.

Auto Burglaries declined by 11.3 % during the first half of 2006 (225 less) over the same period last year.

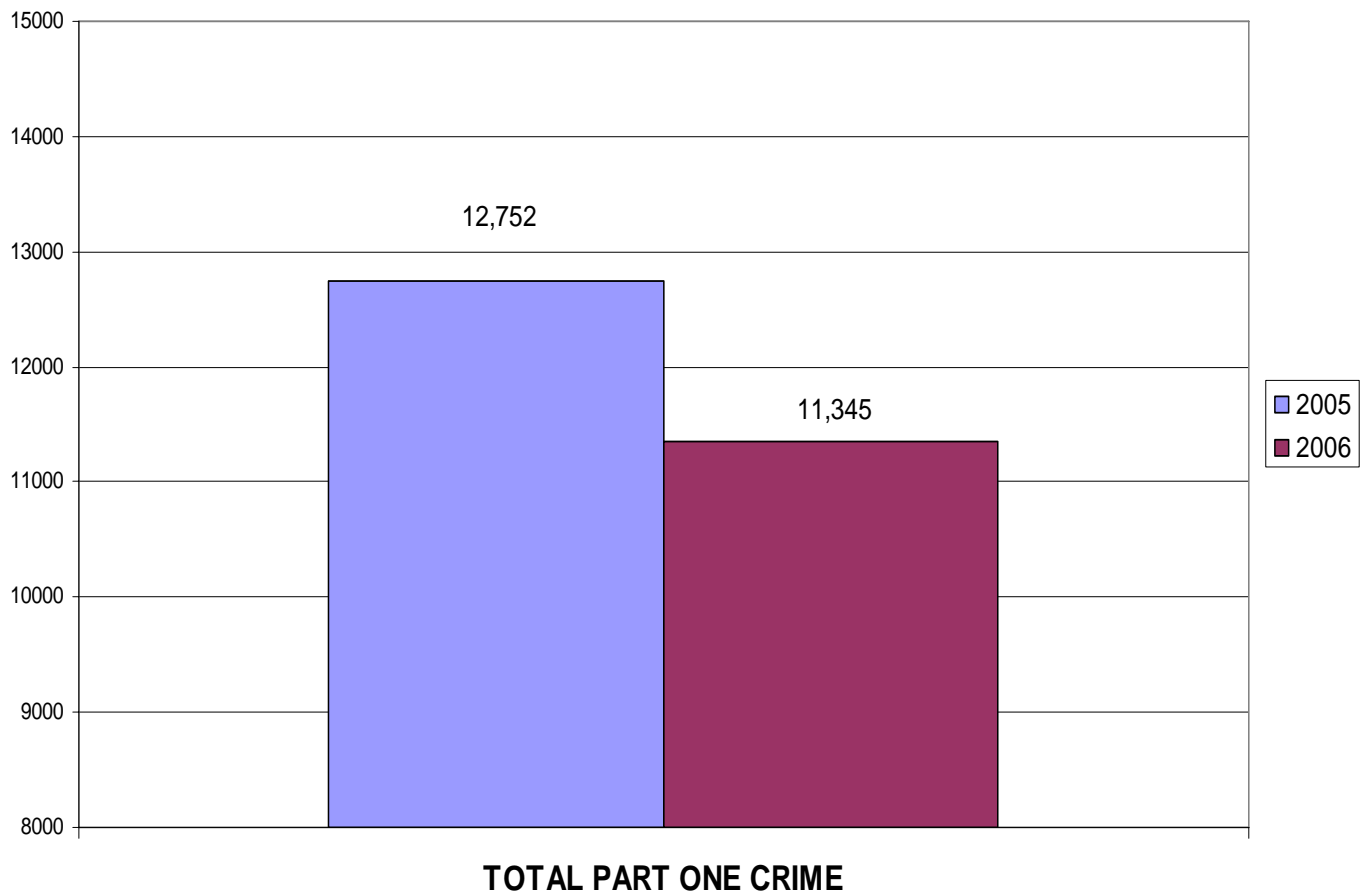
Burglaries were down by 169 occurrences or a 7 % decrease over the same period last year.

There were 113 less reported auto thefts in the first half of 2006 compared to the first half of 2005, a decrease of 8.2%.

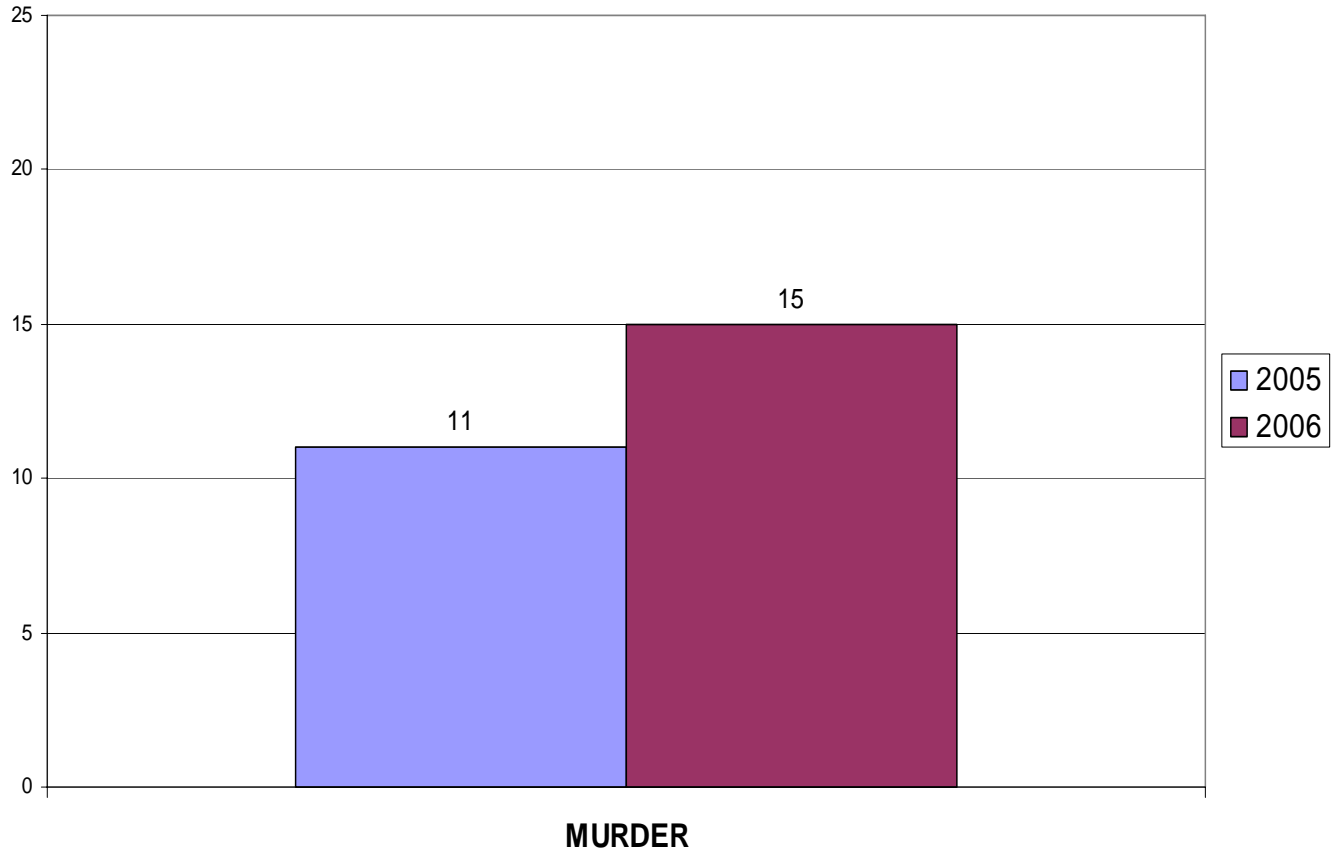
**TAMPA POLICE DEPARTMENT
2006 SEMI-ANNUAL CRIME REPORT**

VIOLENT	2005	2006	# DIFF.	% DIFF.
Murder	11	15	4	36.4%
Sexual Battery	133	96	-37	-27.8%
Robbery	564	579	15	2.7%
Aggravated Assault	1,567	1,709	142	9.1%
TOTAL VIOLENT	2,275	2,399	124	5.5%
NON-VIOLENT	2004	2005	# DIFF.	% DIFF.
Burglary	2,416	2,247	-169	-7.0%
Larceny	6,688	5,439	-1249	-18.7%
Vehicle Theft	1,373	1,260	-113	-8.2%
TOTAL NON-VIOLENT	10,477	8,946	-1531	-14.6%
TOTAL PART ONE CRIME	12,752	11,345	-1,407	-11.0%

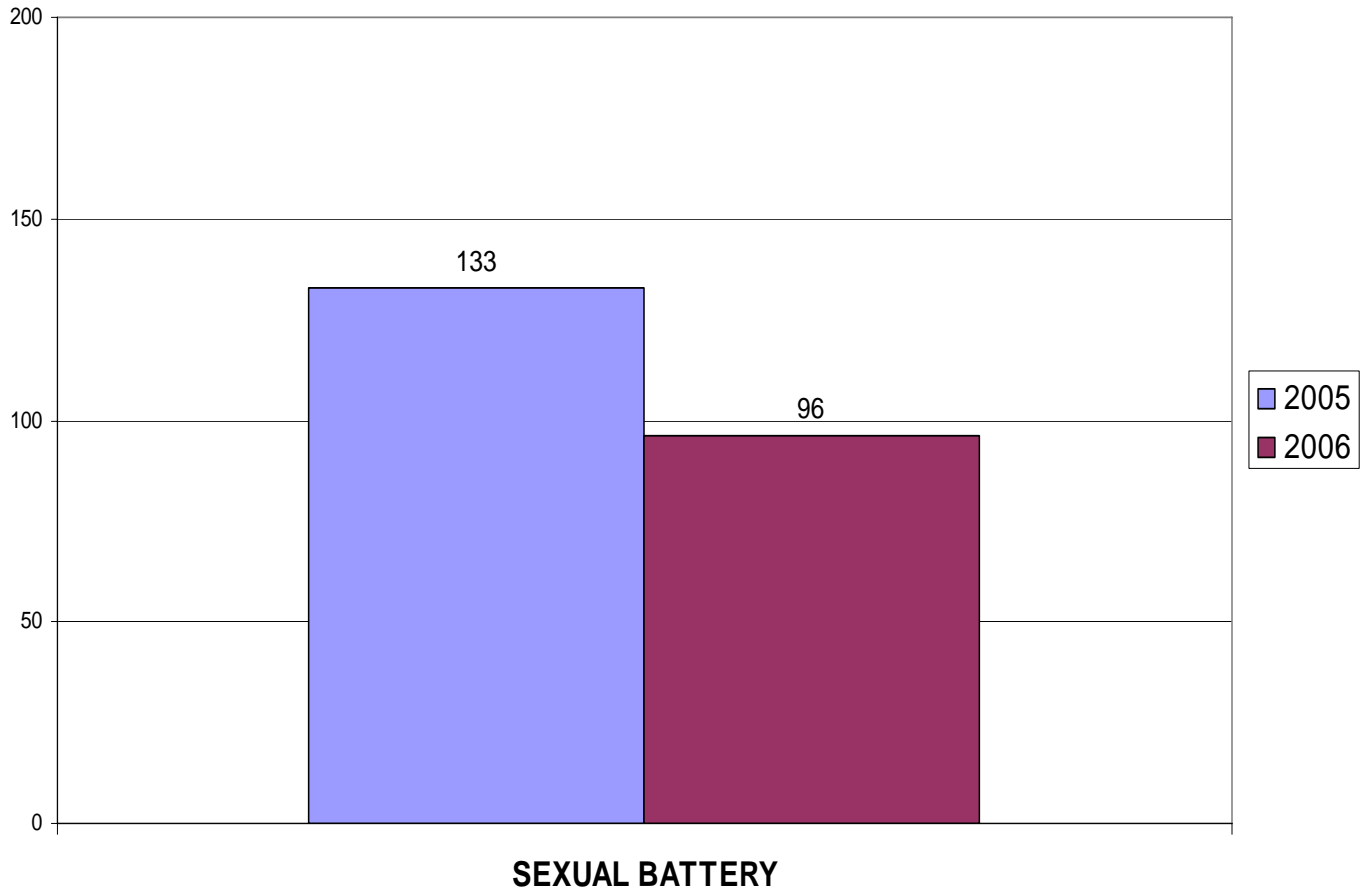
TAMPA POLICE DEPARTMENT 2006 SEMI-ANNUAL CRIME REPORT



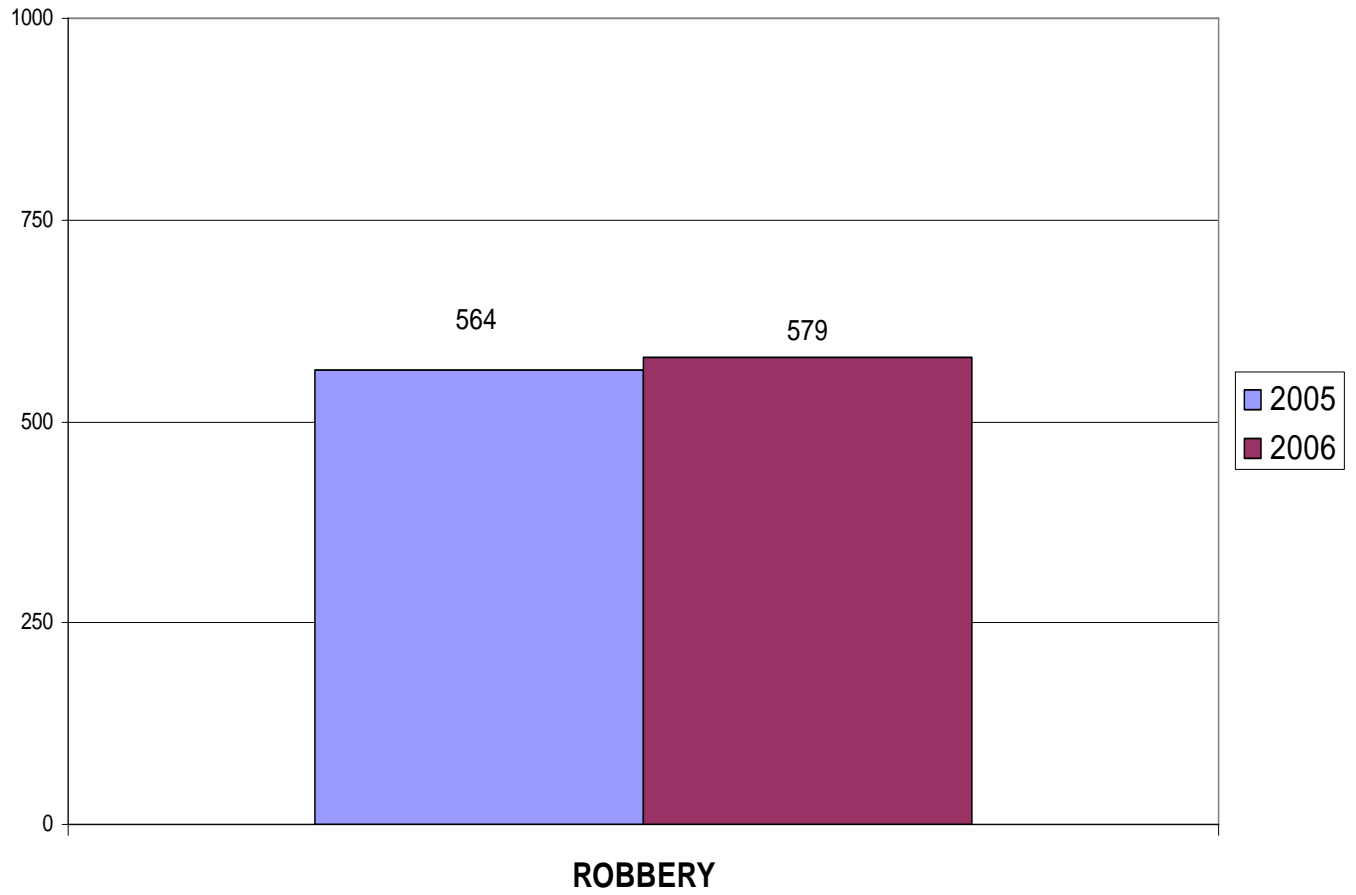
**TAMPA POLICE DEPARTMENT
2006 SEMI-ANNUAL CRIME REPORT**



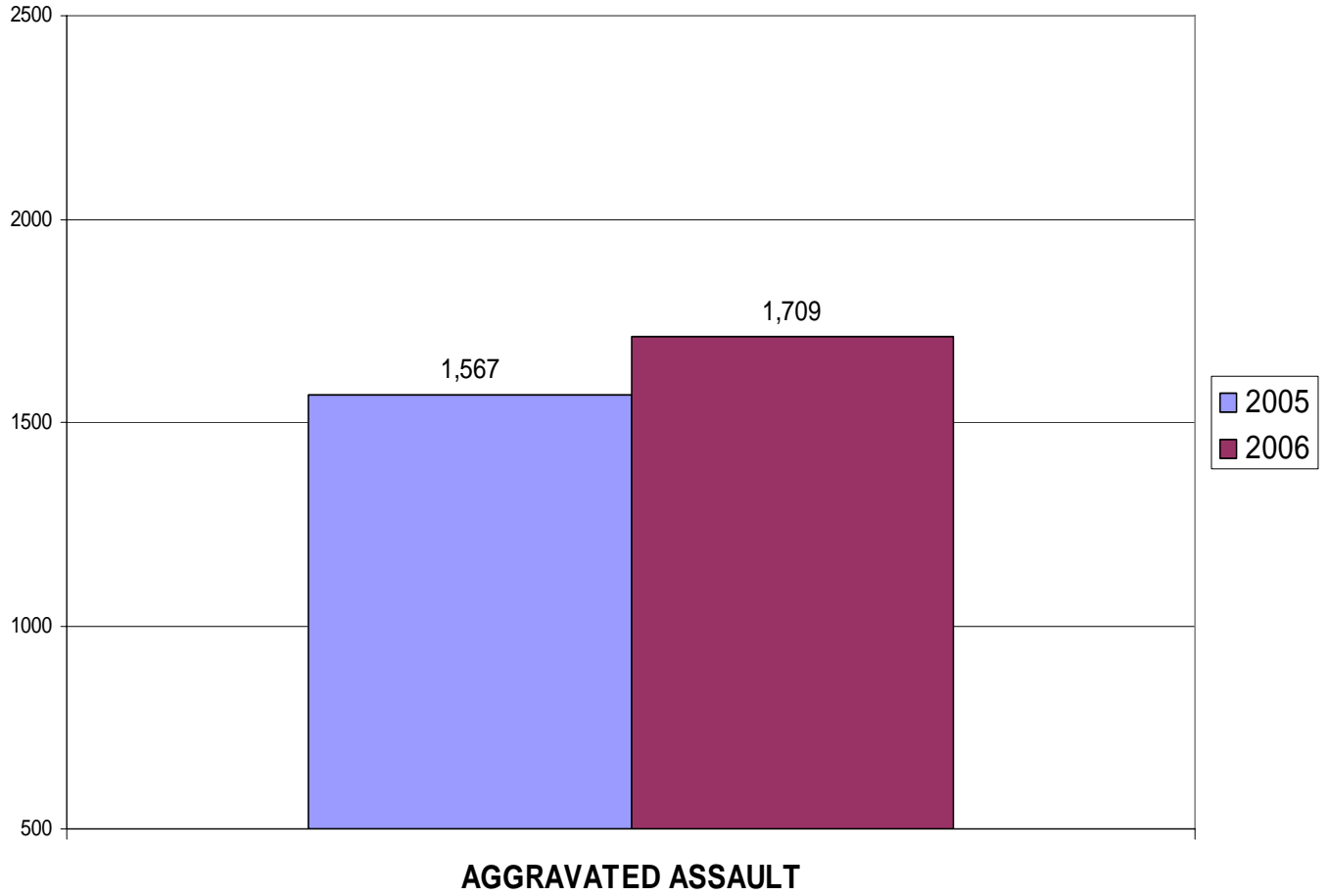
**TAMPA POLICE DEPARTMENT
2006 SEMI-ANNUAL CRIME REPORT**



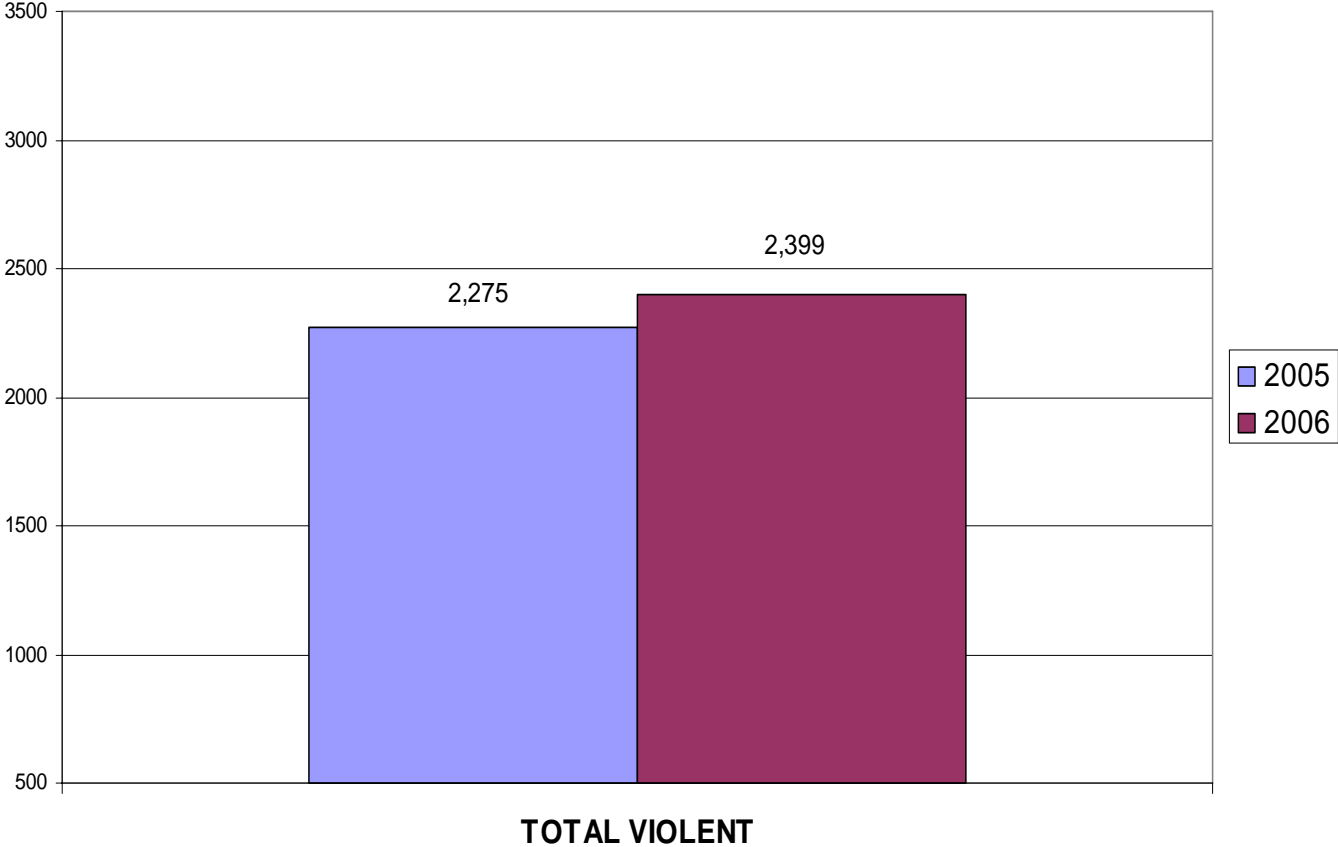
**TAMPA POLICE DEPARTMENT
2006 SEMI-ANNUAL CRIME REPORT**



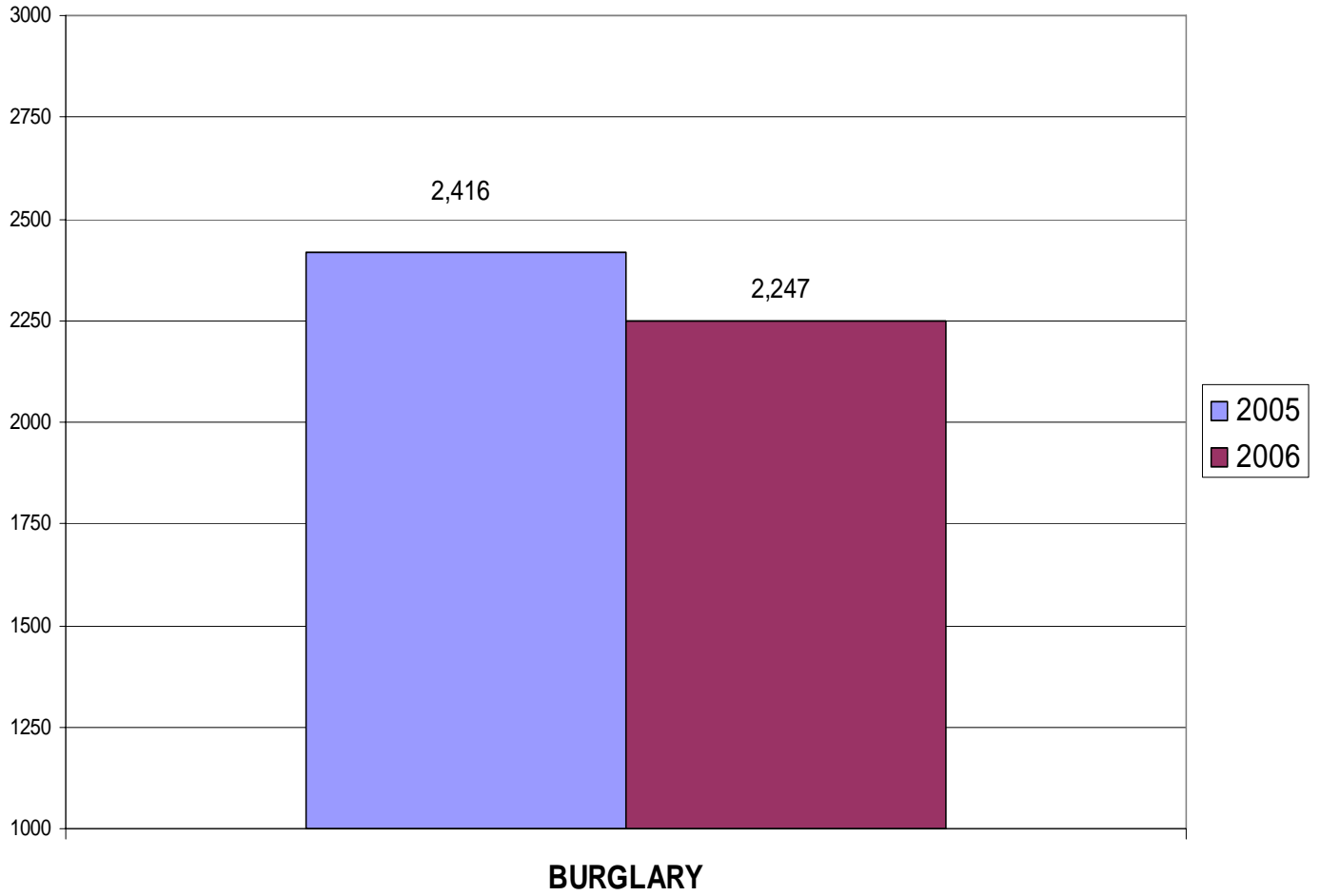
**TAMPA POLICE DEPARTMENT
2006 SEMI-ANNUAL CRIME REPORT**



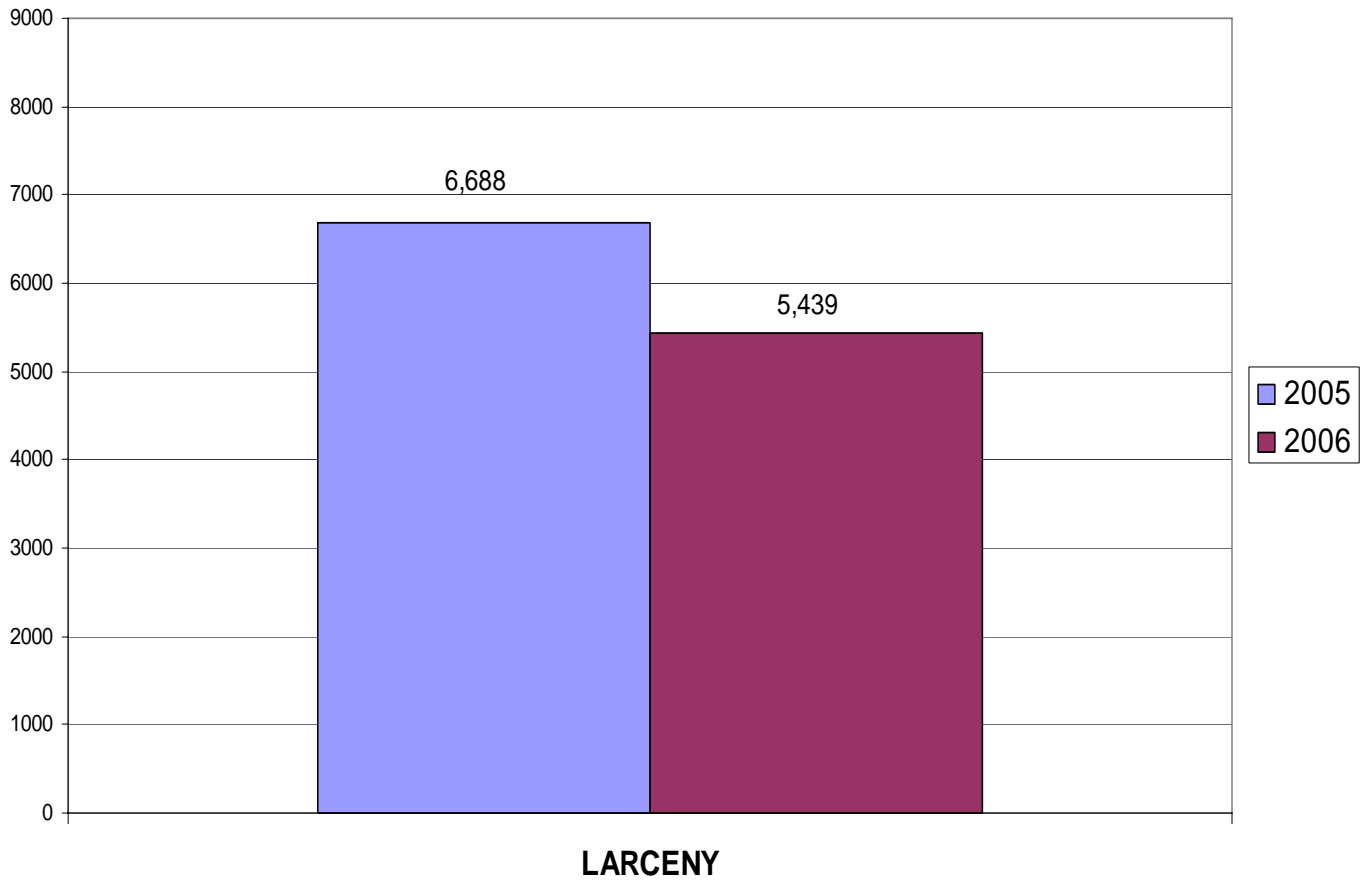
**TAMPA POLICE DEPARTMENT
2006 SEMI-ANNUAL CRIME REPORT**



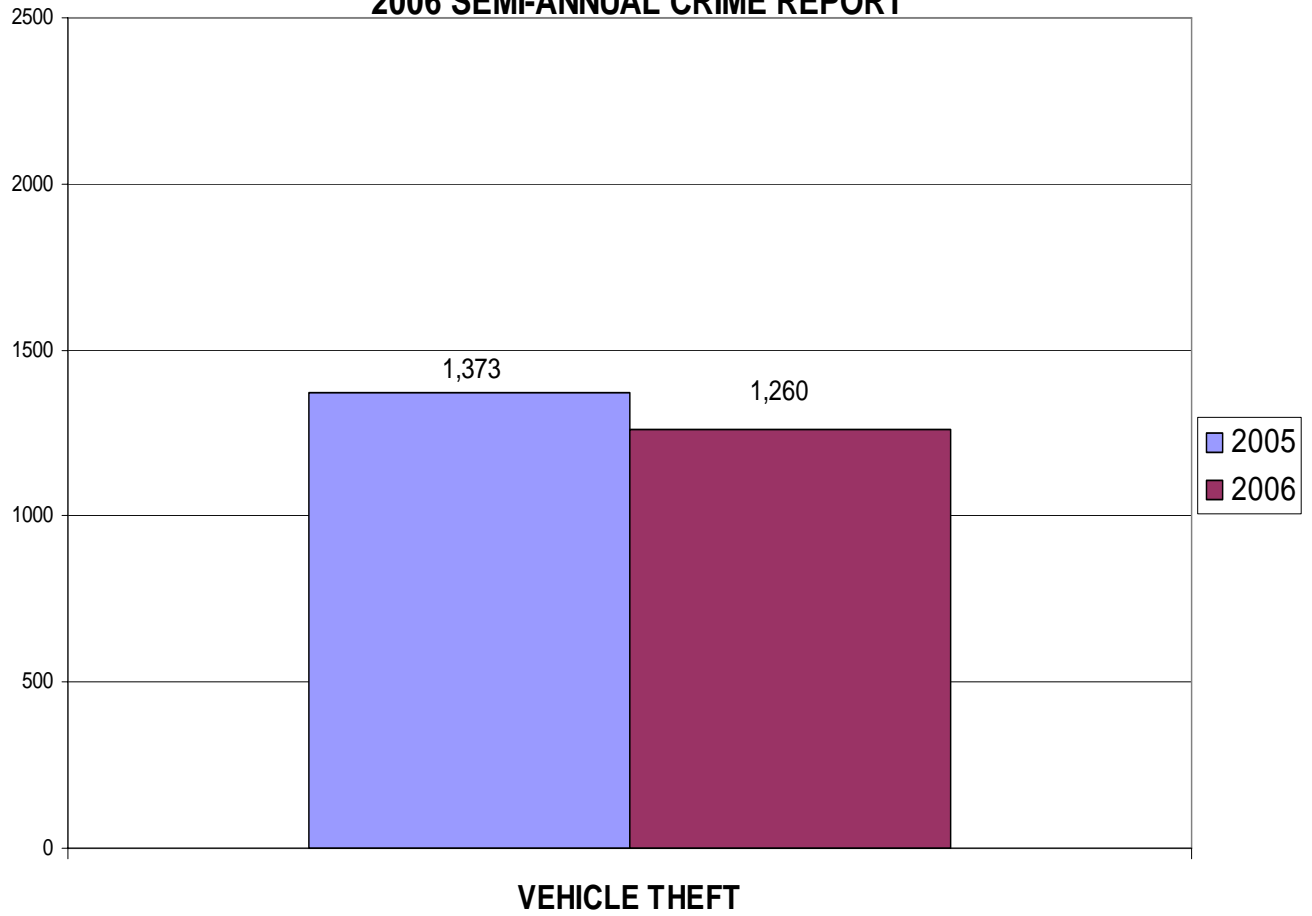
**TAMPA POLICE DEPARTMENT
2006 SEMI-ANNUAL CRIME REPORT**



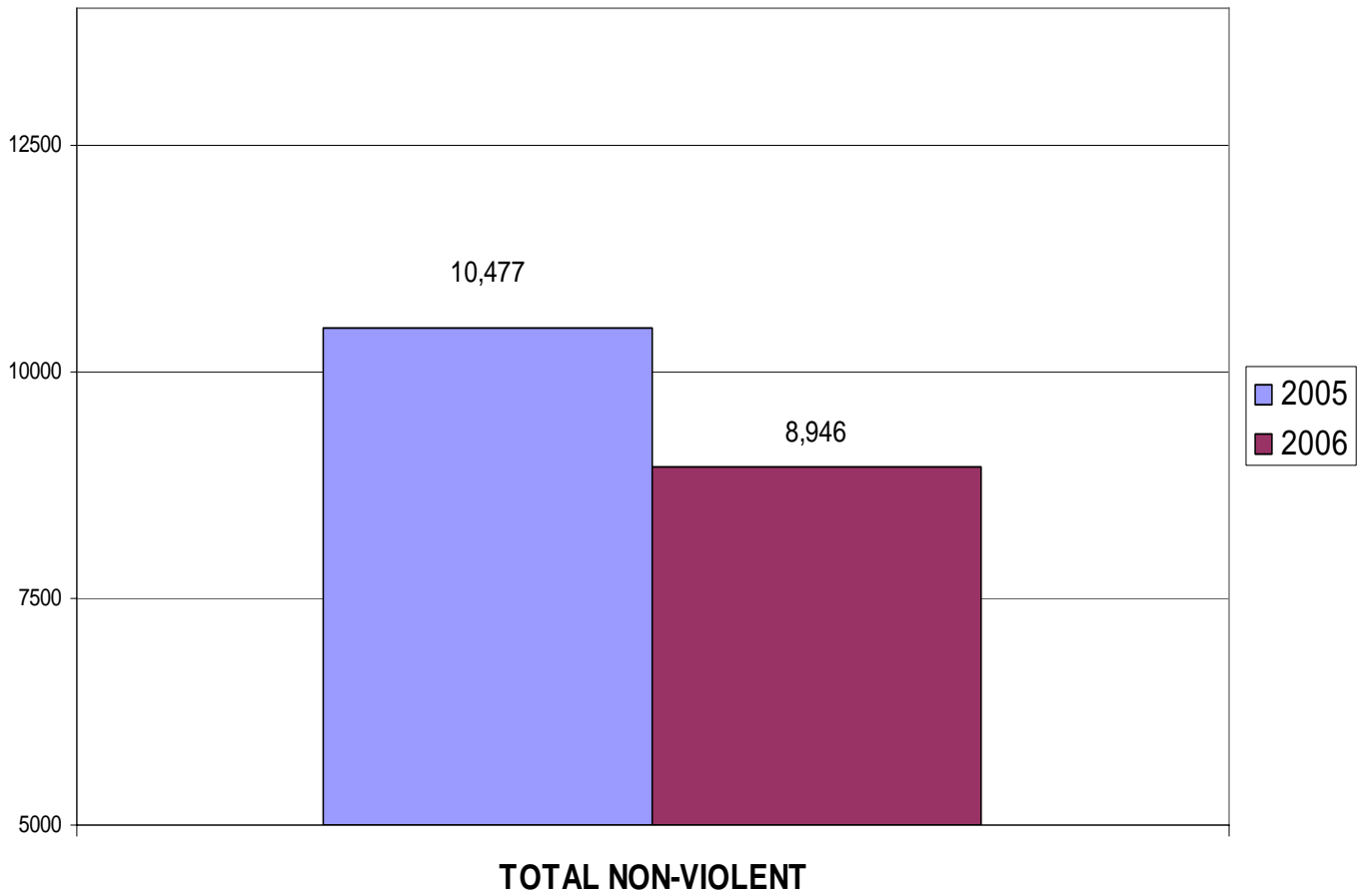
**TAMPA POLICE DEPARTMENT
2006 SEMI-ANNUAL CRIME REPORT**



**TAMPA POLICE DEPARTMENT
2006 SEMI-ANNUAL CRIME REPORT**



**TAMPA POLICE DEPARTMENT
2006 SEMI-ANNUAL CRIME REPORT**



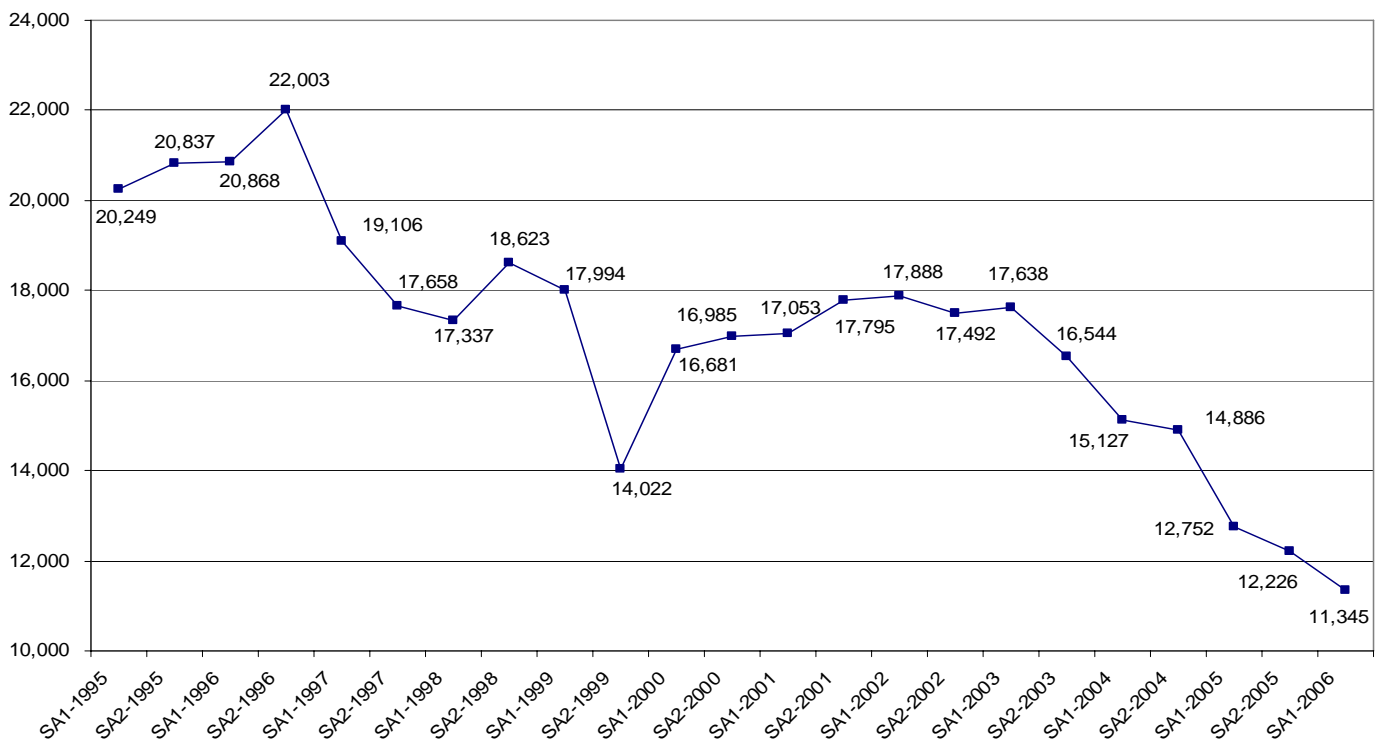
TAMPA POLICE DEPARTMENT 2006 Semi-Annual Crime Report Domestic Violence by Offense			
	<i>2005</i>	<i>2006</i>	<i>Percent Change</i>
MURDER	2	2	0.0%
MANSLAUGHTER	0	1	
FORCIBLE RAPE	22	14	-36.4%
FORCIBLE SODOMY	2	1	-50.0%
FORCIBLE FONDLING	13	2	-84.6%
AGGRAVATED ASSAULT	413	451	9.2%
AGGRAVATED STALKING	13	9	-30.8%
SIMPLE ASSAULT	1,281	1,210	-5.5%
THREAT/INTIMIDATION	0	0	
SIMPLE STALKING	0	0	
TOTAL	1,746	1,690	-3.2%

Domestic Violence by Arrest			
	<i>2005</i>	<i>2006</i>	<i>Percent Change</i>
MURDER	3	2	-33.3%
MANSLAUGHTER	0	1	
FORCIBLE RAPE	12	7	-41.7%
FORCIBLE SODOMY	1	0	-100.0%
FORCIBLE FONDLING	5	0	-100.0%
AGGRAVATED ASSAULT	335	338	0.9%
AGGRAVATED STALKING	11	5	-54.5%
SIMPLE ASSAULT	907	830	-8.5%
THREAT/INTIMIDATION	0	0	
SIMPLE STALKING	0	0	
TOTAL	1,274	1,183	-7.1%

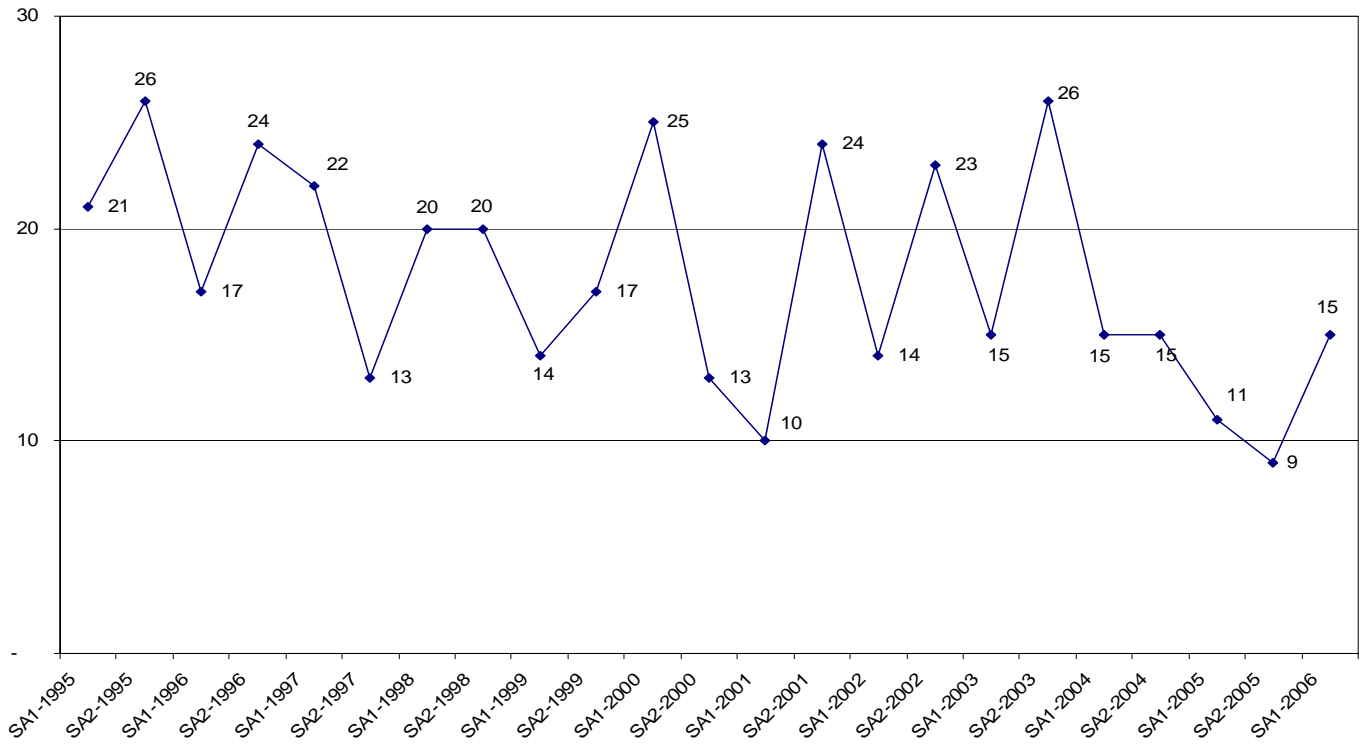
**TAMPA POLICE DEPARTMENT
2006 Semi-Annual Crime Report
Arrest Information**

	<i>SA 1-2005</i>	<i>SA 1-2006</i>	<i>#DIFF</i>	<i>%DIFF</i>
ADULTS	23,070	23,174	104	0.5%
JUVENILES	2,279	2,792	513	22.5%
MALES	19,660	20,095	435	2.2%
FEMALES	5,689	5,871	182	3.2%
TOTAL	25,349	25,966	617	2.4%

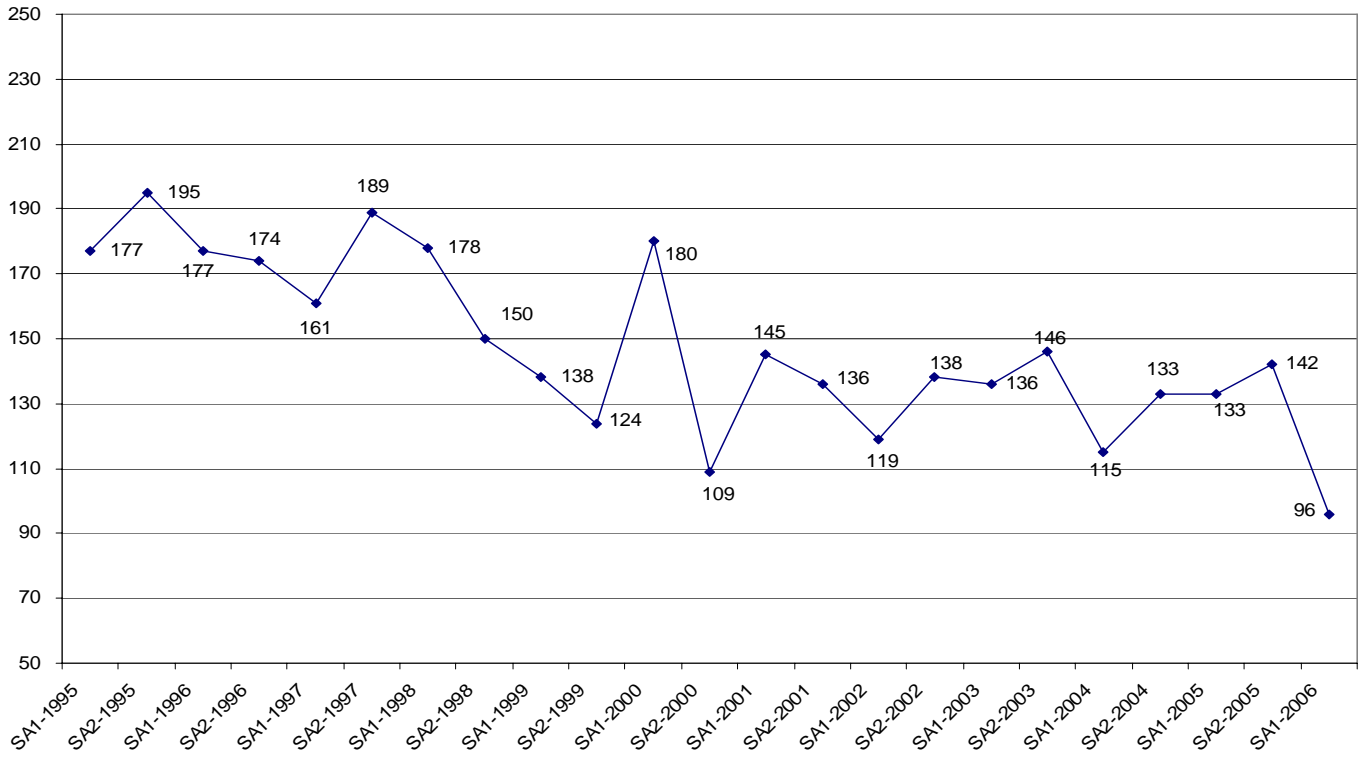
SEMI-ANNUAL TOTAL PART I CRIME COMPARISON IN TAMPA



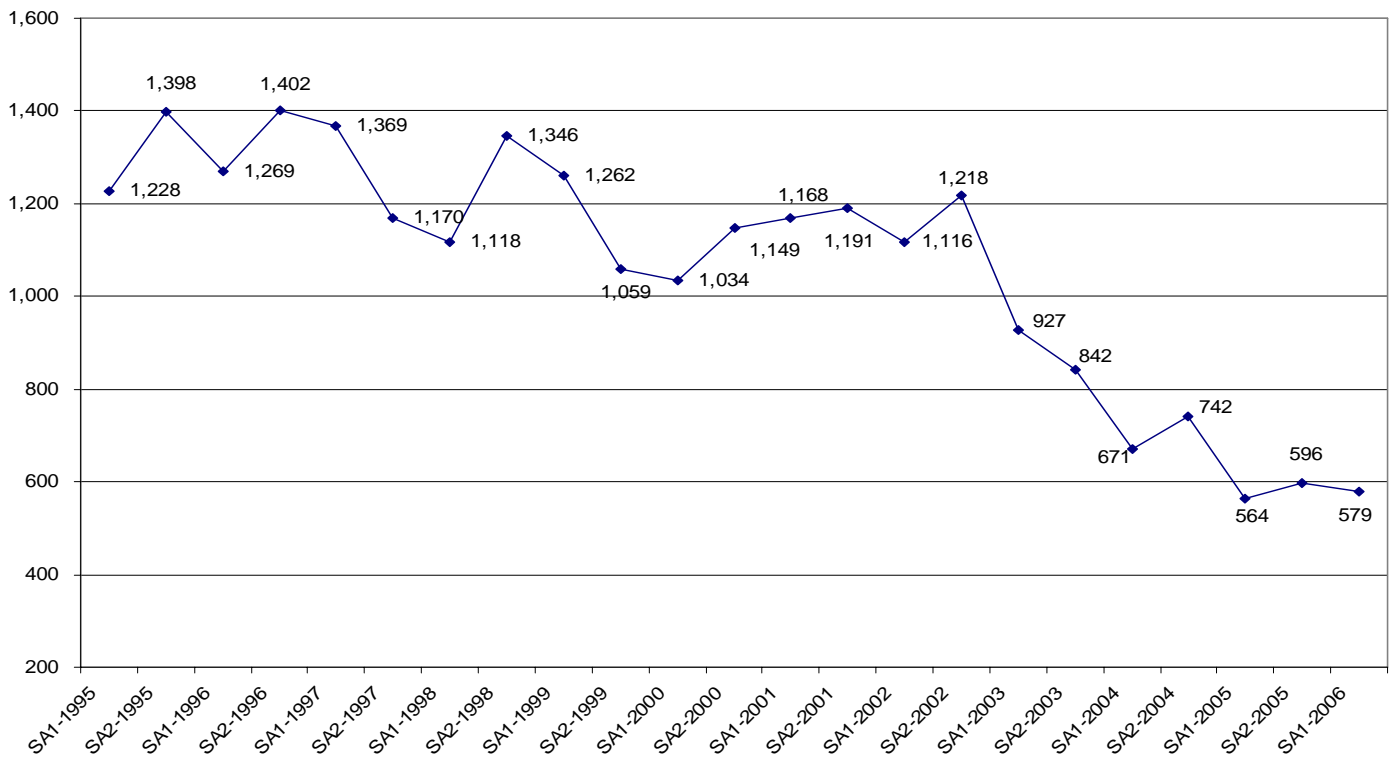
SEMI-ANNUAL MURDER COMPARISON IN TAMPA



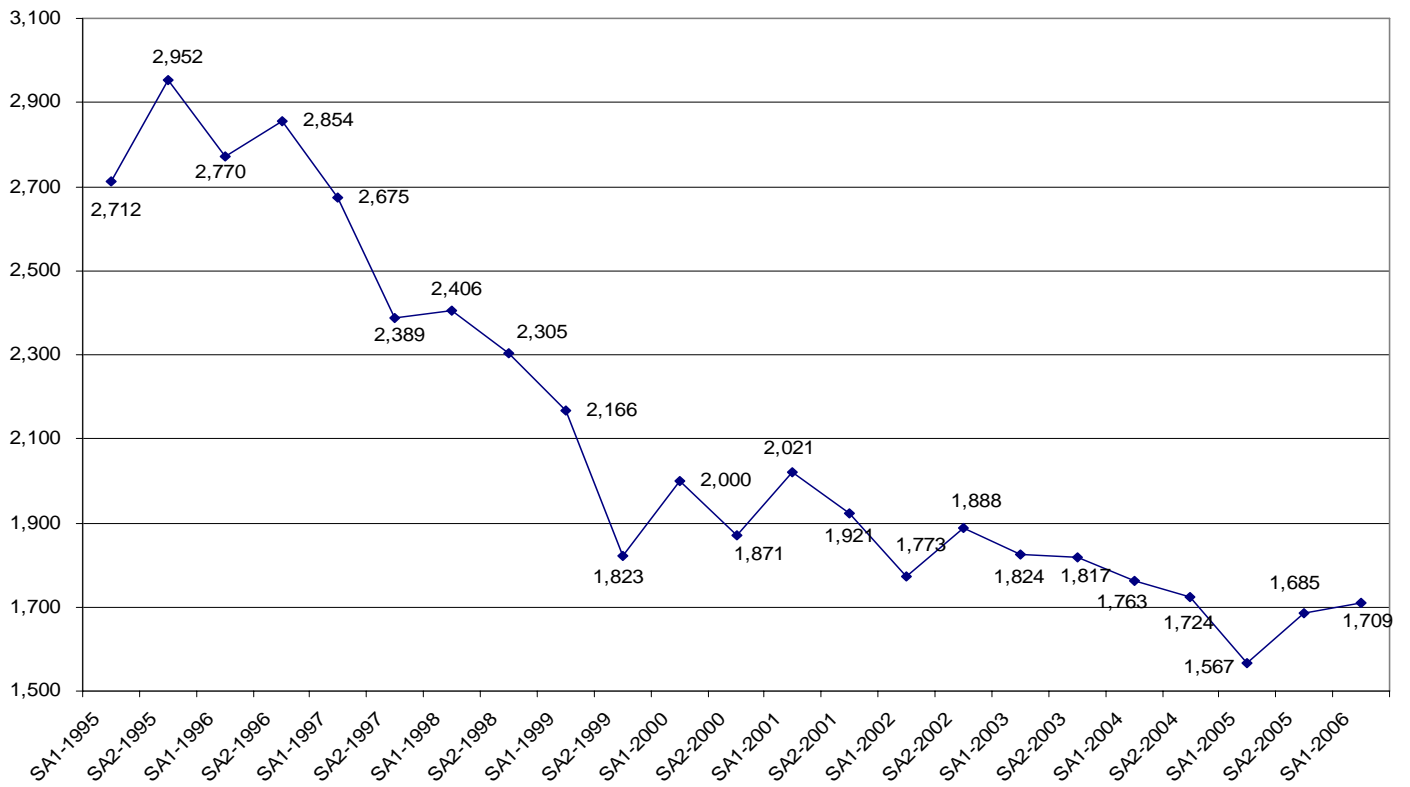
SEMI-ANNUAL SEXUAL ASSAULT COMPARISON IN TAMPA



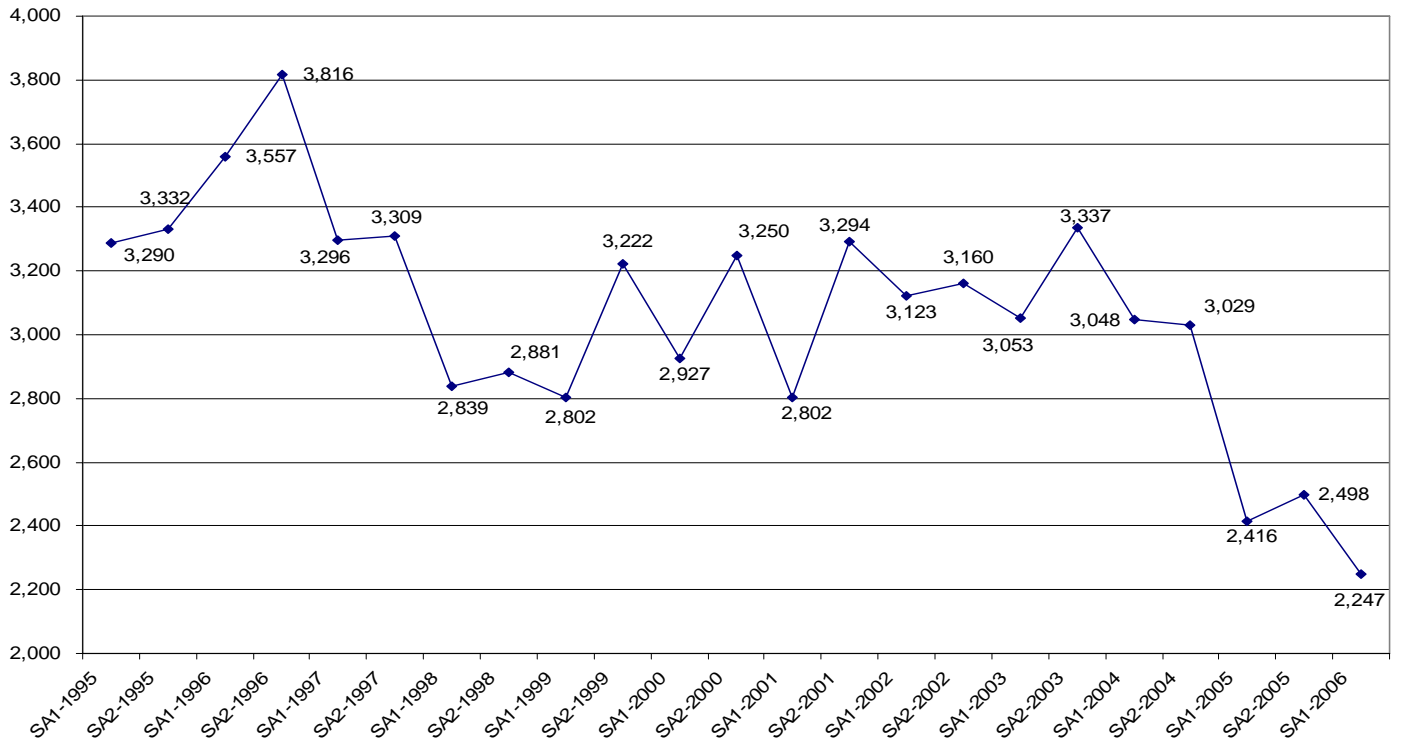
SEMI-ANNUAL ROBBERY COMPARISON IN TAMPA



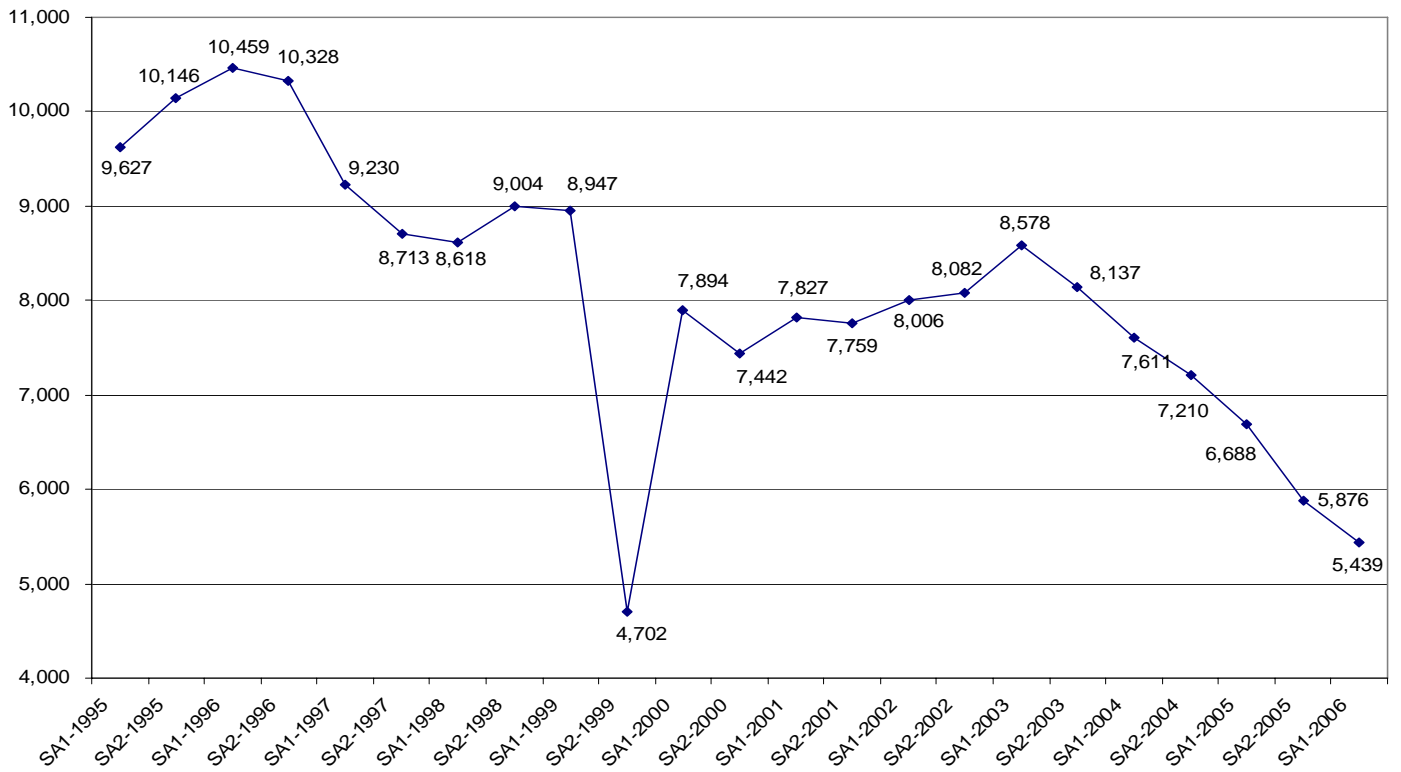
SEMI-ANNUAL AGGRAVATED ASSAULT COMPARISON IN TAMPA



SEMI-ANNUAL BURGLARY COMPARISON IN TAMPA



SEMI-ANNUAL LARCENY COMPARISON IN TAMPA



SEMI-ANNUAL VEHICLE THEFT COMPARISON IN TAMPA

