

# **TAMPA POLICE DEPARTMENT 2007 SEMI-ANNUAL CRIME REPORT**



**STEPHEN HOGUE**  
**Chief of Police**

**Prepared by:**  
**Analytical Crime Mapping Unit**  
**October 2007**

**TAMPA POLICE DEPARTMENT  
2007 SEMI-ANNUAL CRIME REPORT  
SUMMARY**

There were 978 fewer Part 1 Index crimes in the first half of 2007 compared to the first half of 2006. This significant difference equates to an 8.6 % decrease in Part 1 Crimes in the City of Tampa. Part 1 Index crimes include both violent and non-violent crime categories.

Violent crimes were down by 557 occurrences for the first half of 2007 compared to the first half of 2006. This represents a substantial 23.2 % decrease in violent crimes.

Robbery was slightly up by 2.1 % in the first half of 2007.

There were 4 more murders in the first half of 2007 compared to the same period last year. This equates to a 26.7 % increase.

Aggravated Assault offenses significantly decreased by 32.8 % from 1,709 during the first half of 2006 to 1,148 halfway in 2007.

Sexual Battery decreased by 12.5 % over the same period last year with 12 less offense reported.

Non-violent crimes decreased by 421 offenses. This equates to a 4.7 % reduction in non-violent crimes over the same period in 2006.

Larceny offenses including auto burglaries slightly decreased by 1.4 % for the first half of 2007 compared to the first half of 2006.

Auto Burglary increased by 13.3 % during the first half of 2007 (235 more) over the same period last year.

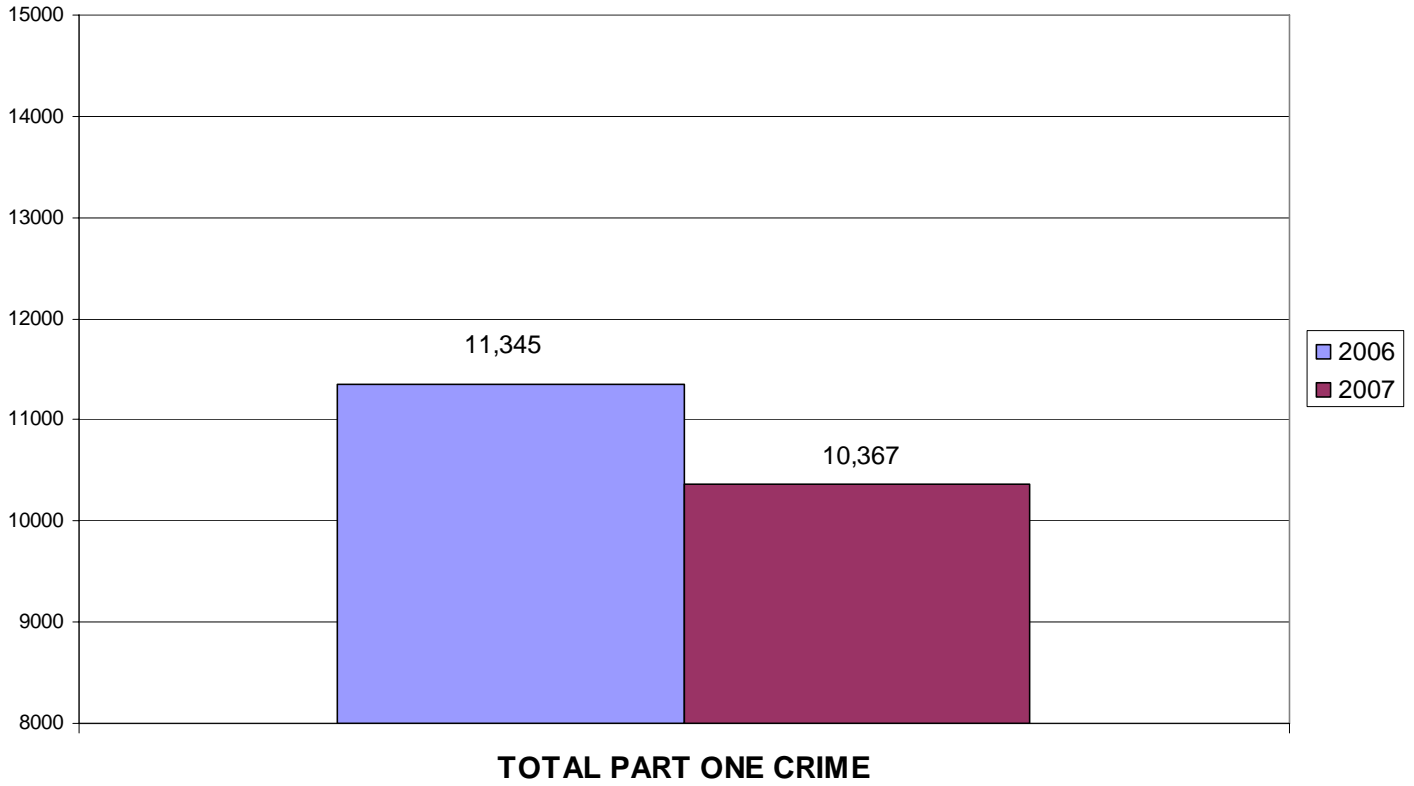
Burglaries were down by 138 occurrences or a 6.1 % decrease over the same period last year.

There were 209 less reported auto thefts in the first half of 2007 compared to the first half of 2006, a decrease of 16.6 %

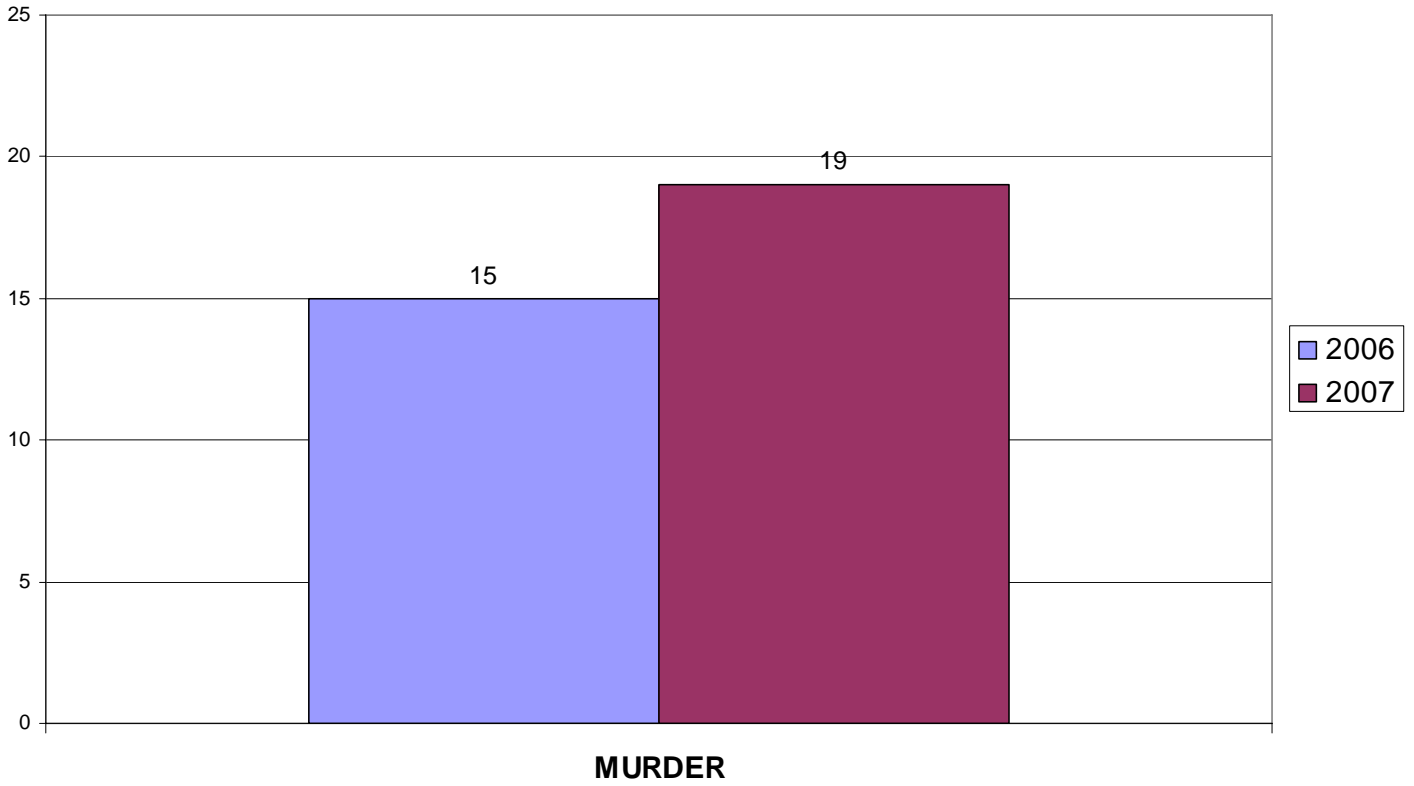
**TAMPA POLICE DEPARTMENT  
2007 SEMI-ANNUAL CRIME REPORT**

<b>VIOLENT</b>	<b>2006</b>	<b>2007</b>	<b># DIFF.</b>	<b>% DIFF.</b>
Murder	15	19	4	26.7%
Sexual Battery	96	84	-12	-12.5%
Robbery	579	591	12	2.1%
Aggravated Assault	1,709	1,148	-561	-32.8%
<b>TOTAL VIOLENT</b>	<b>2,399</b>	<b>1,842</b>	<b>-557</b>	<b>-23.2%</b>
<b>NON-VIOLENT</b>	<b>2006</b>	<b>2007</b>	<b># DIFF.</b>	<b>% DIFF.</b>
Burglary	2,247	2,109	-138	-6.1%
Larceny	5,439	5,365	-74	-1.4%
Vehicle Theft	1,260	1,051	-209	-16.6%
<b>TOTAL NON-VIOLENT</b>	<b>8,946</b>	<b>8,525</b>	<b>-421</b>	<b>-4.7%</b>
<b>TOTAL PART ONE CRIME</b>	<b>11,345</b>	<b>10,367</b>	<b>-978</b>	<b>-8.6%</b>

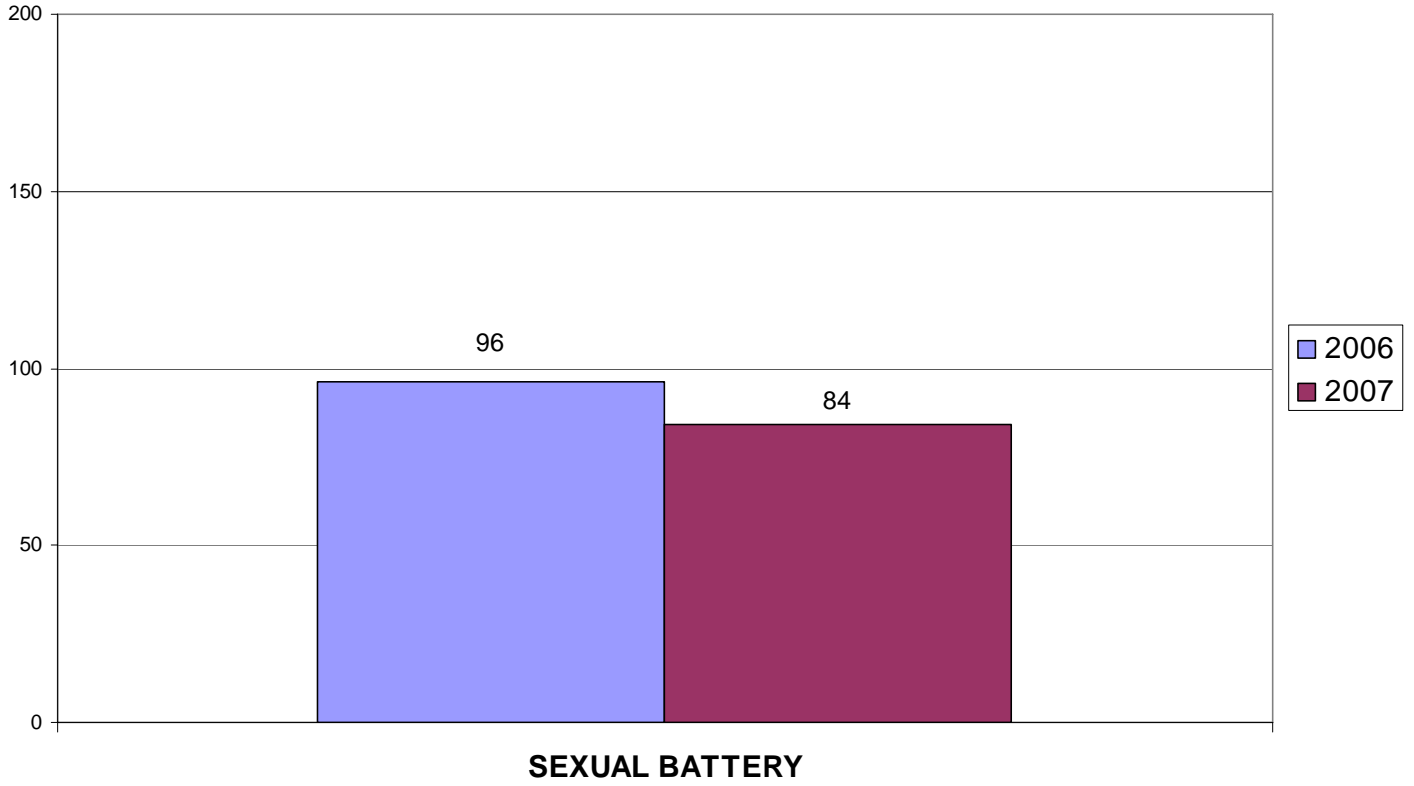
**TAMPA POLICE DEPARTMENT  
2007 SEMI-ANNUAL CRIME REPORT**



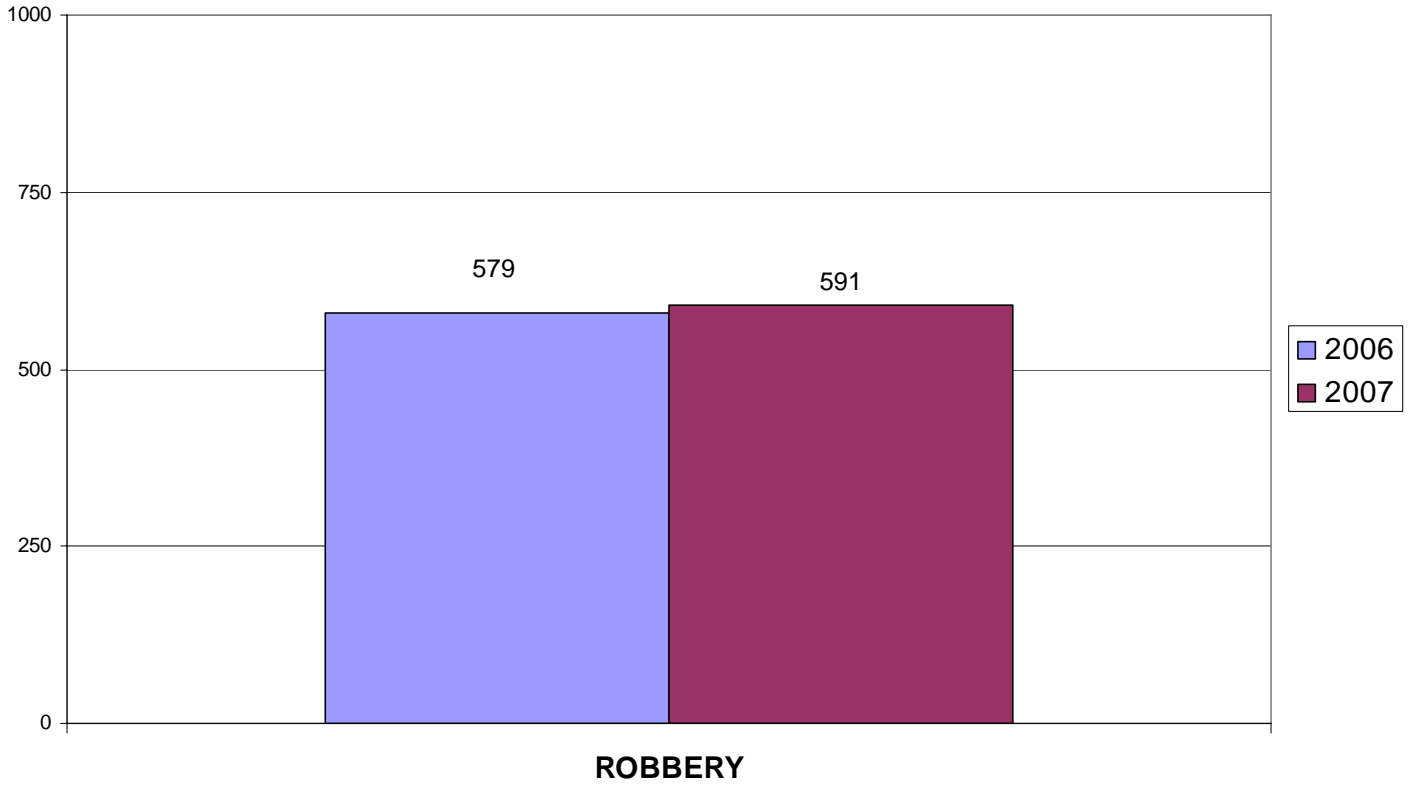
**TAMPA POLICE DEPARTMENT  
2007 SEMI-ANNUAL CRIME REPORT**



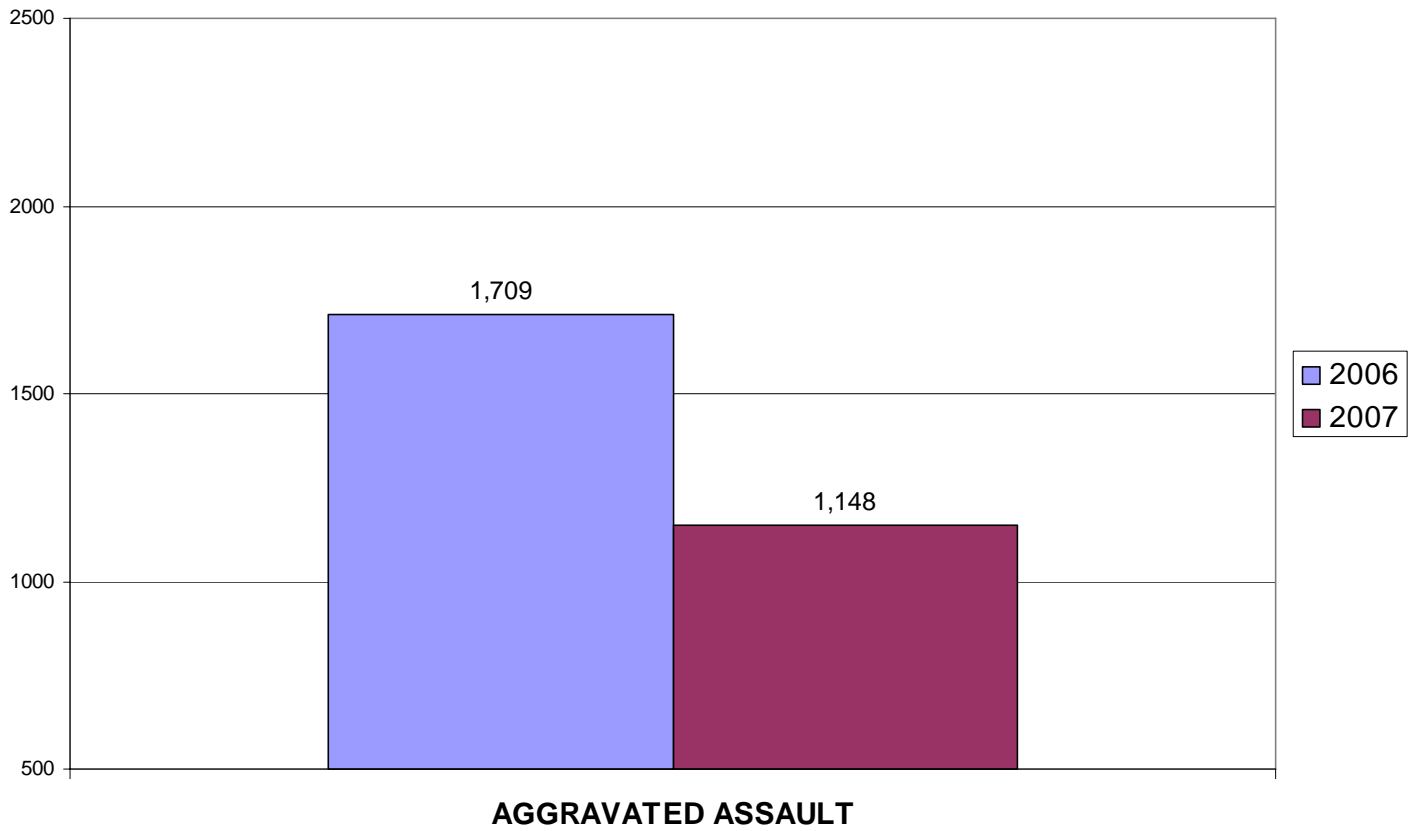
**TAMPA POLICE DEPARTMENT  
2007 SEMI-ANNUAL CRIME REPORT**



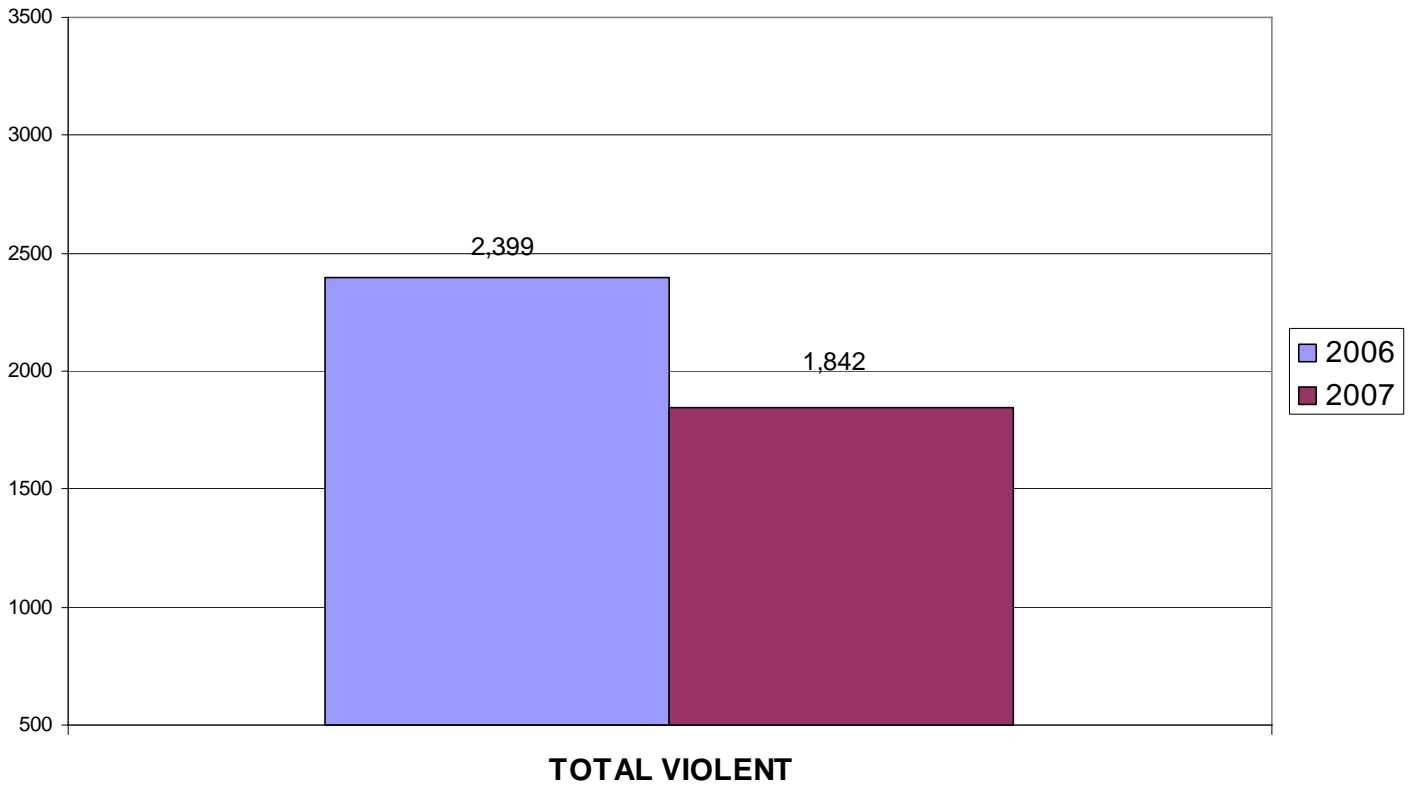
**TAMPA POLICE DEPARTMENT  
2007 SEMI-ANNUAL CRIME REPORT**



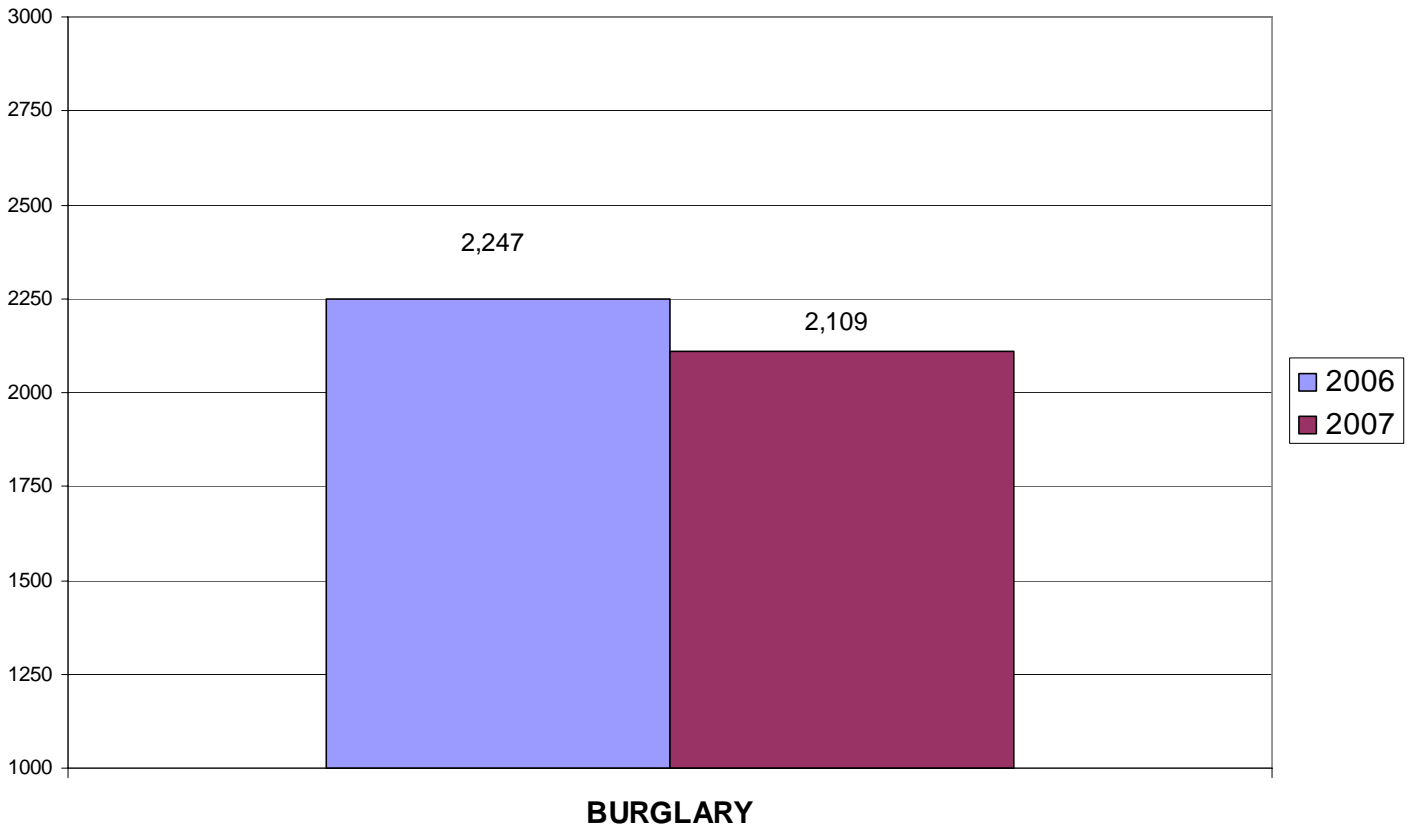
## TAMPA POLICE DEPARTMENT 2007 SEMI-ANNUAL CRIME REPORT



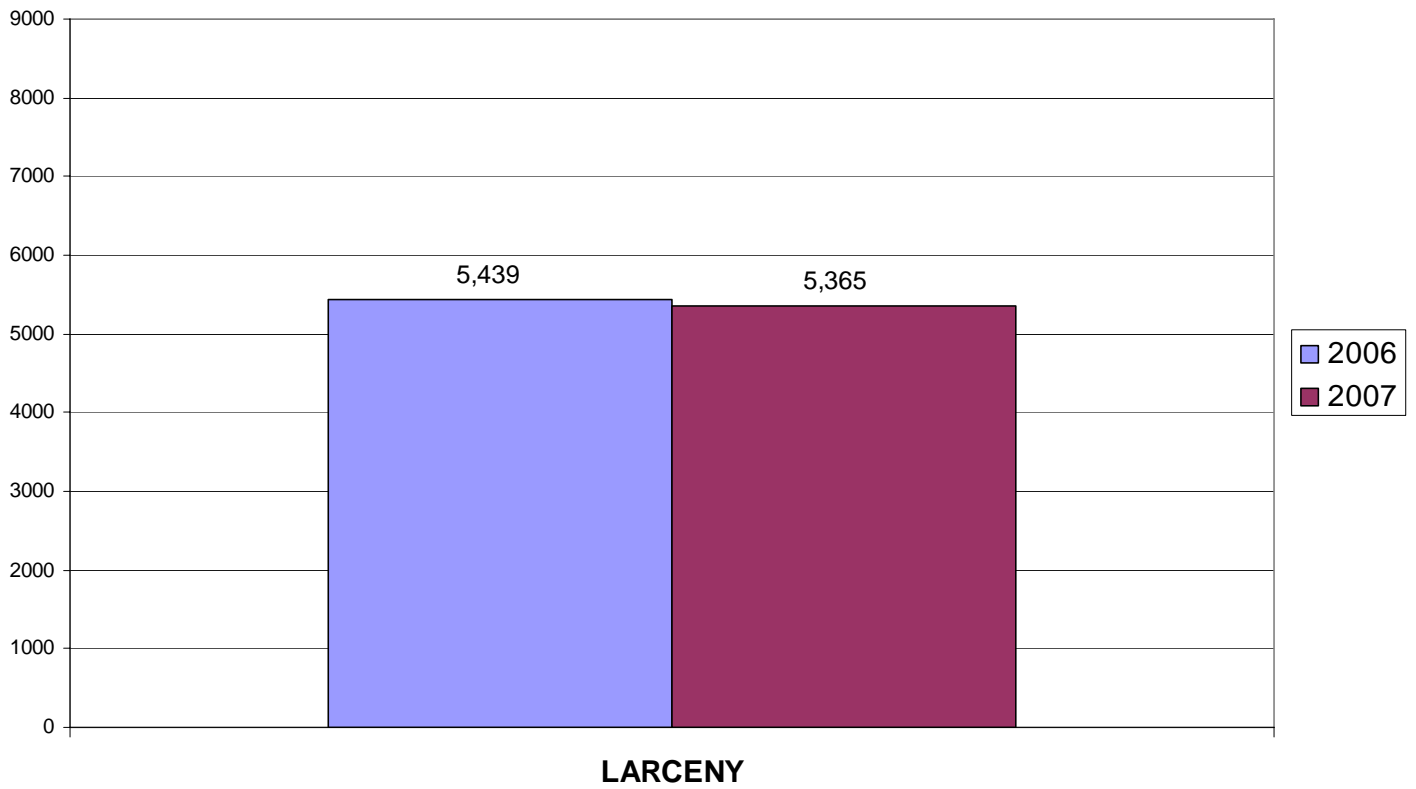
**TAMPA POLICE DEPARTMENT  
2007 SEMI-ANNUAL CRIME REPORT**



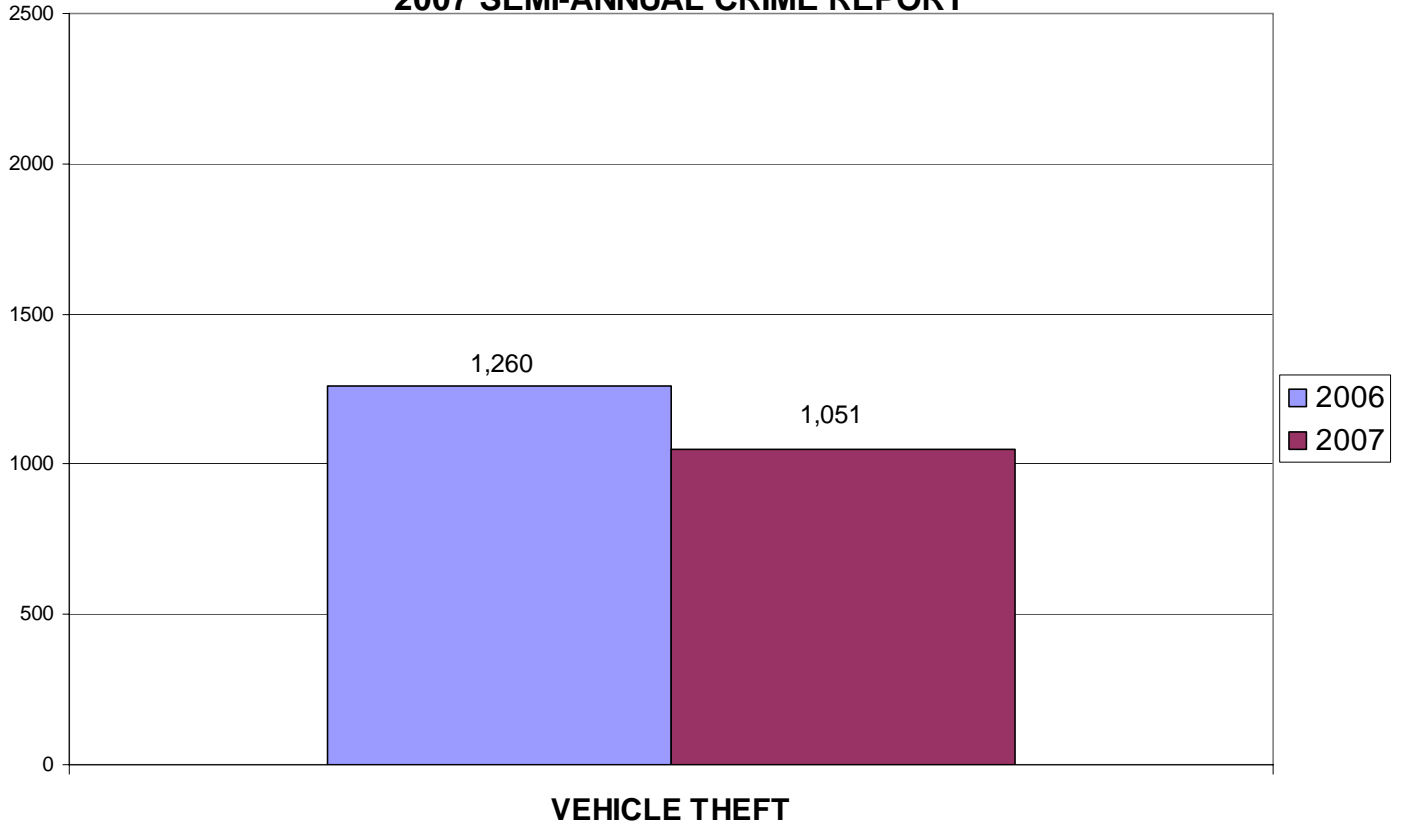
**TAMPA POLICE DEPARTMENT  
2007 SEMI-ANNUAL CRIME REPORT**



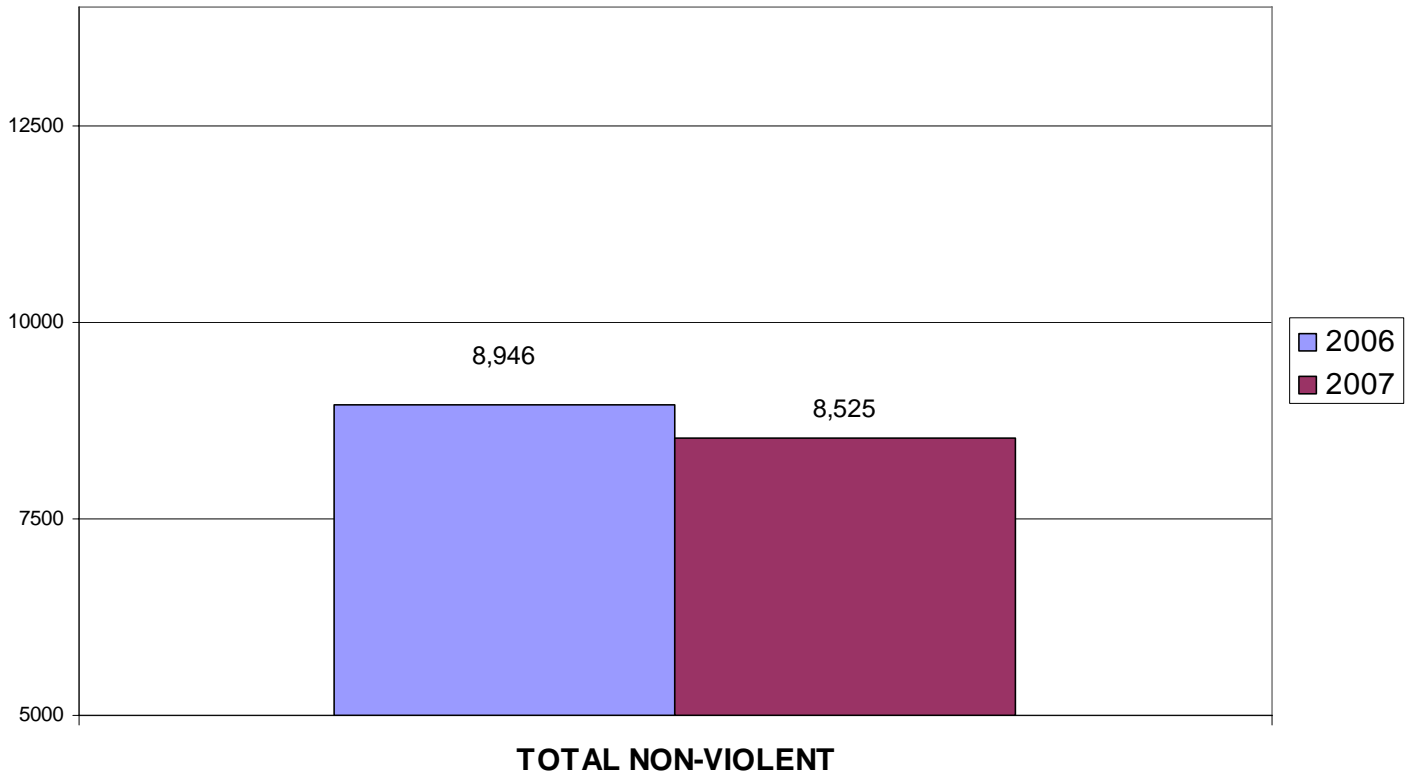
**TAMPA POLICE DEPARTMENT  
2007 SEMI-ANNUAL CRIME REPORT**



**TAMPA POLICE DEPARTMENT  
2007 SEMI-ANNUAL CRIME REPORT**



**TAMPA POLICE DEPARTMENT  
2007 SEMI-ANNUAL CRIME REPORT**



**TAMPA POLICE DEPARTMENT  
2007 Semi-Annual Crime Report  
Domestic Violence by Offense**

	<i>2006</i>	<i>2007</i>	<i>Percent Change</i>
MURDER	2	3	50.0%
MANSLAUGHTER	1	0	
FORCIBLE RAPE	14	8	-42.9%
FORCIBLE SODOMY	1	2	100.0%
FORCIBLE FONDLING	2	3	50.0%
AGGRAVATED ASSAULT	451	278	-38.4%
AGGRAVATED STALKING	9	0	-100.0%
SIMPLE ASSAULT	1,210	1,312	8.4%
THREAT/INTIMIDATION	0	0	
SIMPLE STALKING	0	0	
<b>TOTAL</b>	<b>1,690</b>	<b>1,606</b>	<b>-5.0%</b>

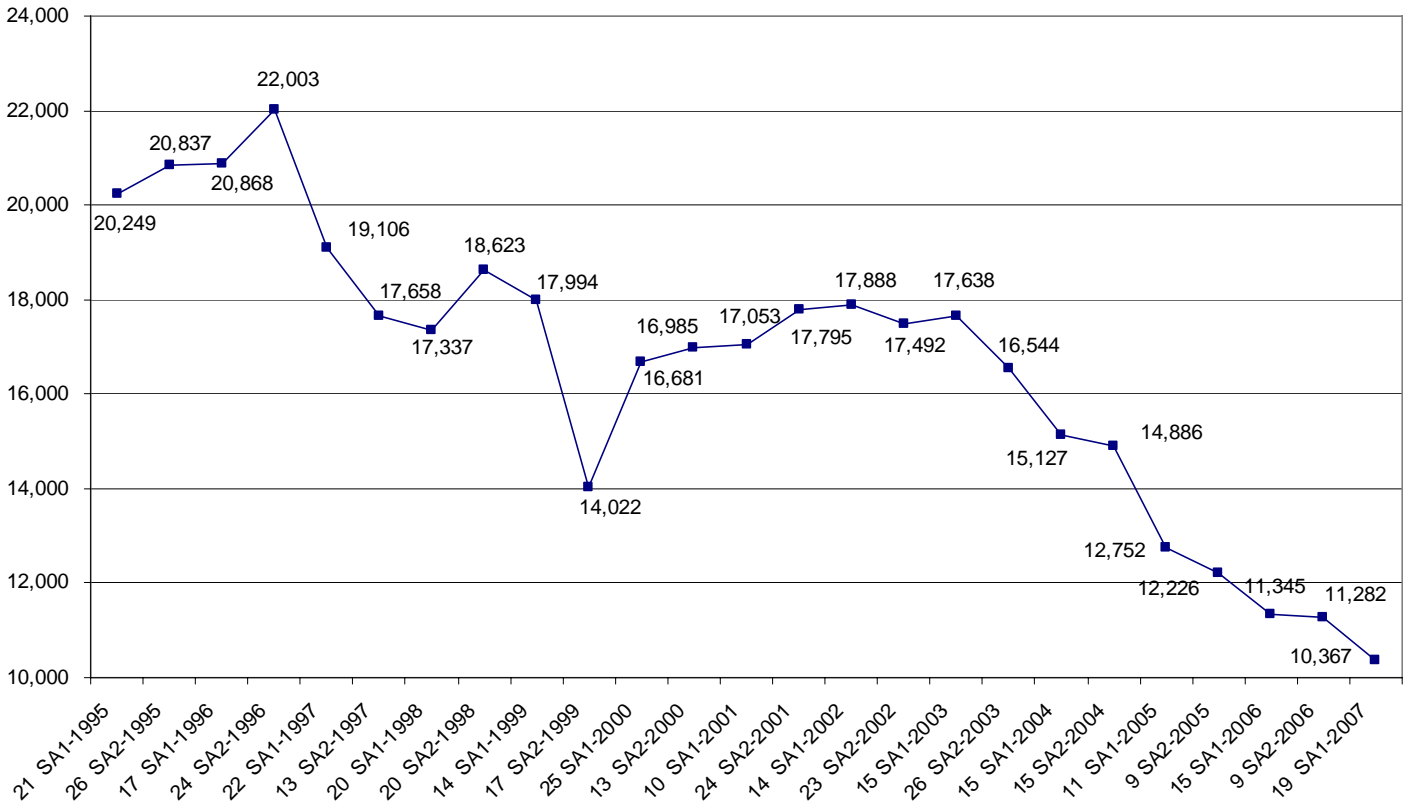
**Domestic Violence by Arrest**

	<i>2006</i>	<i>2007</i>	<i>Percent Change</i>
MURDER	2	3	50.0%
MANSLAUGHTER	1	0	-100.0%
FORCIBLE RAPE	7	7	0.0%
FORCIBLE SODOMY	0	2	
FORCIBLE FONDLING	0	2	
AGGRAVATED ASSAULT	338	244	-27.8%
AGGRAVATED STALKING	5	0	-100.0%
SIMPLE ASSAULT	830	923	11.2%
THREAT/INTIMIDATION	0	0	
SIMPLE STALKING	0	0	
<b>TOTAL</b>	<b>1,183</b>	<b>1,181</b>	<b>-0.2%</b>

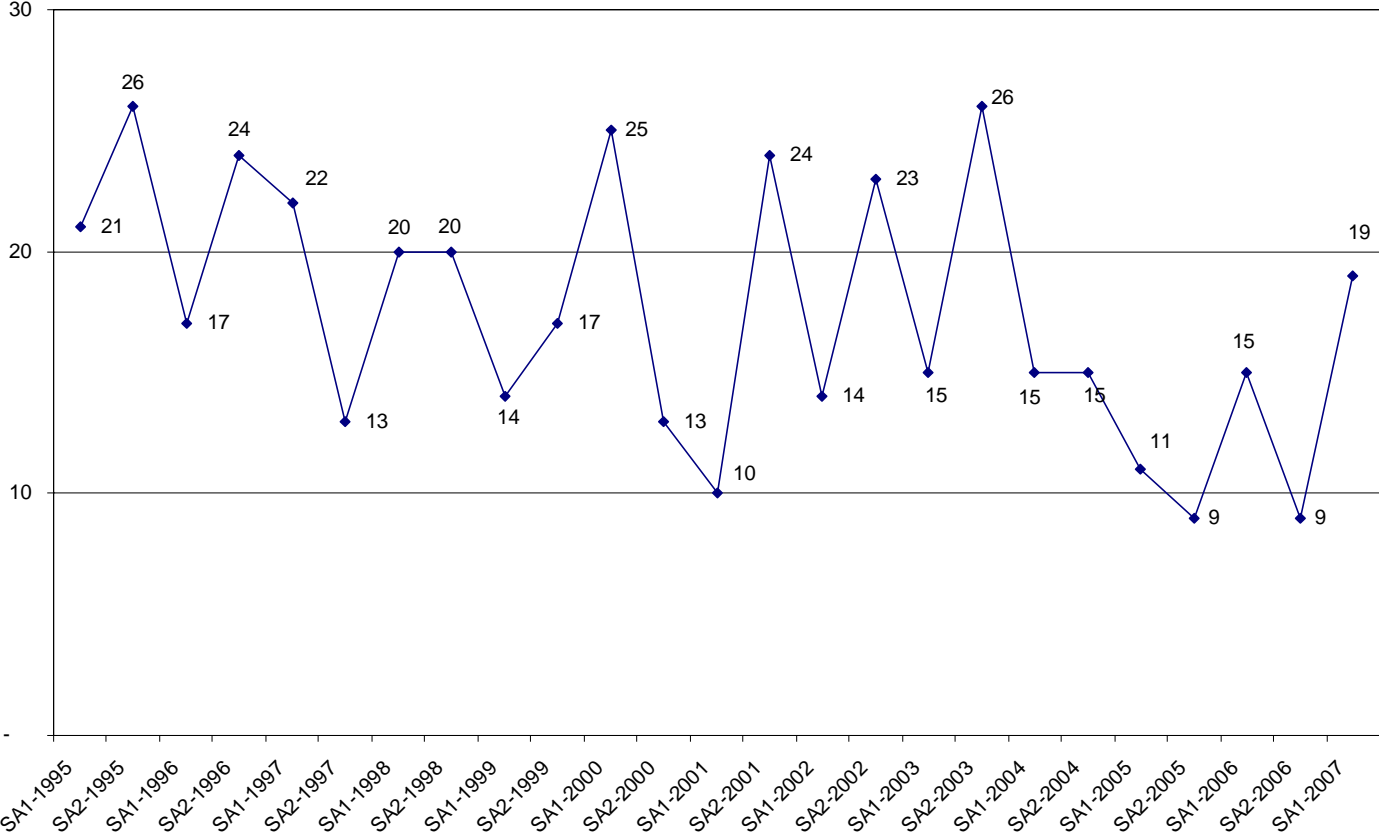
**TAMPA POLICE DEPARTMENT  
2007 Semi-Annual Crime Report  
Arrest Information**

	<i>SA1-2006</i>	<i>SA1-2007</i>	<i>#DIFF</i>	<i>%DIFF</i>
<b>ADULTS</b>	23,174	22,282	-892	-3.8%
<b>JUVENILES</b>	2,792	2,676	-116	-4.2%
<b>MALES</b>	20,095	19,375	-720	-3.6%
<b>FEMALES</b>	5,871	5,583	-288	-4.9%
<b>TOTAL</b>	<b>25,966</b>	<b>24,958</b>	<b>-1,008</b>	<b>-3.9%</b>

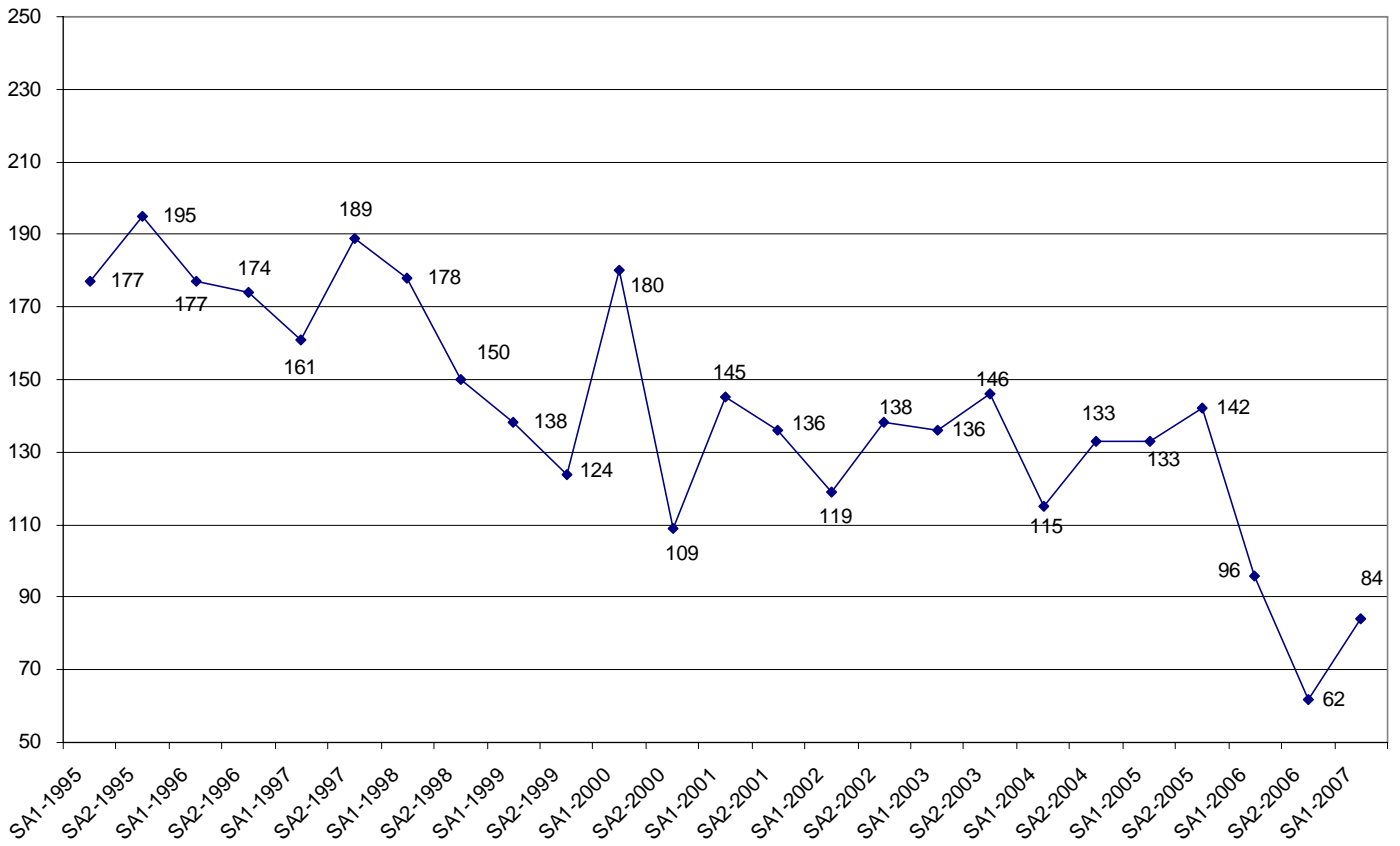
### SEMI-ANNUAL TOTAL PART I CRIME COMPARISON IN TAMPA



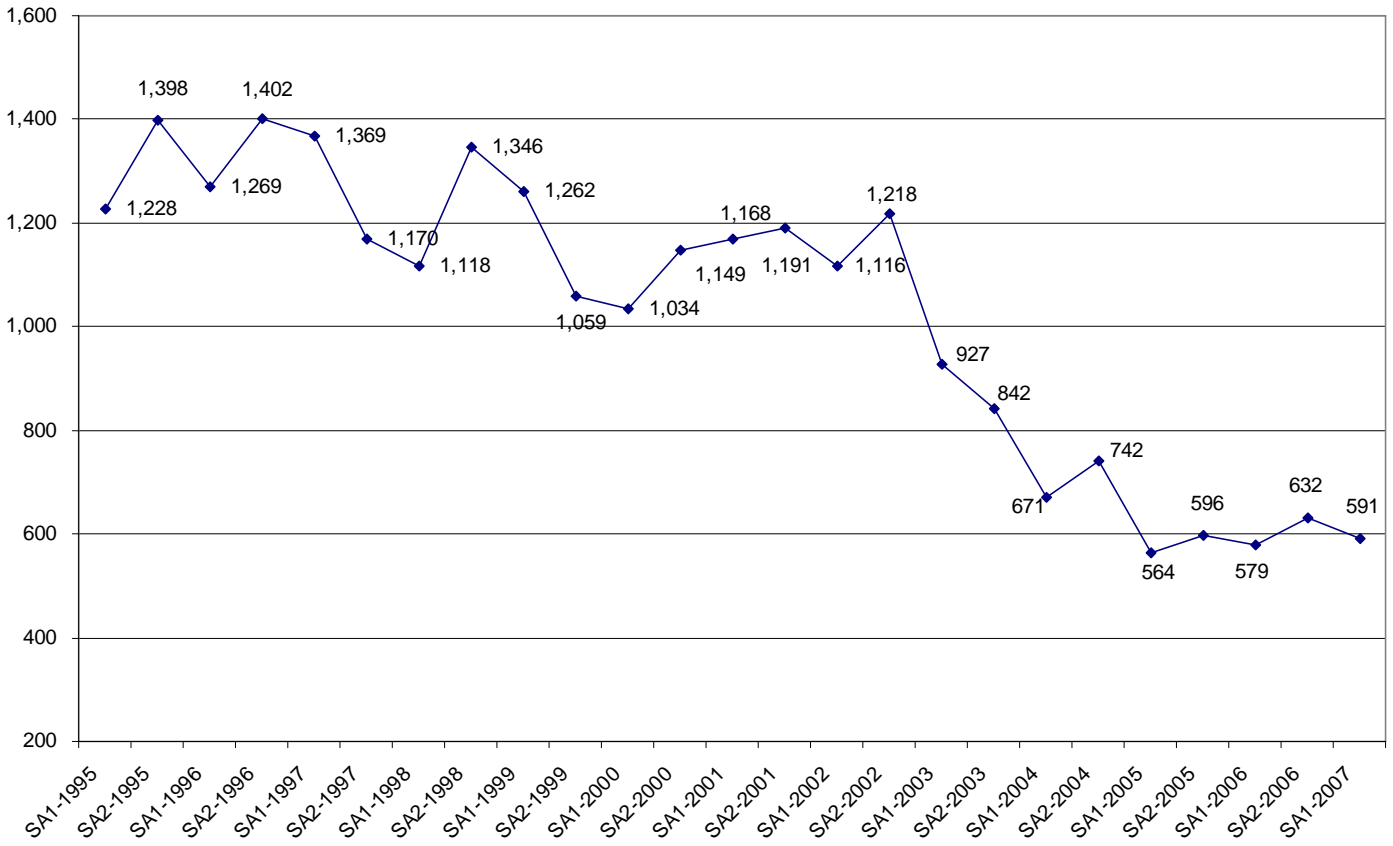
**SEMI-ANNUAL MURDER COMPARISON IN TAMPA**



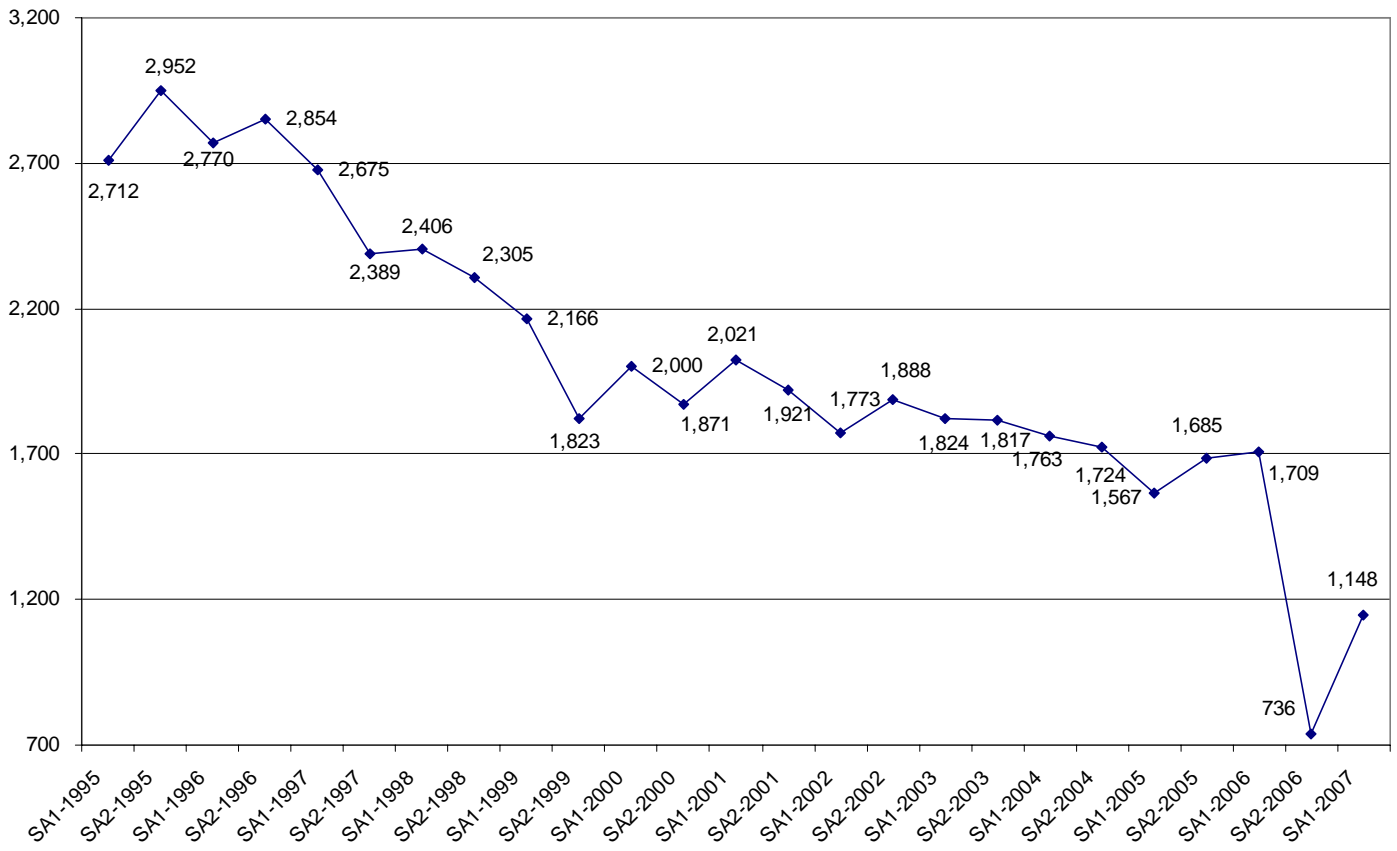
### SEMI-ANNUAL SEXUAL ASSAULT COMPARISON IN TAMPA



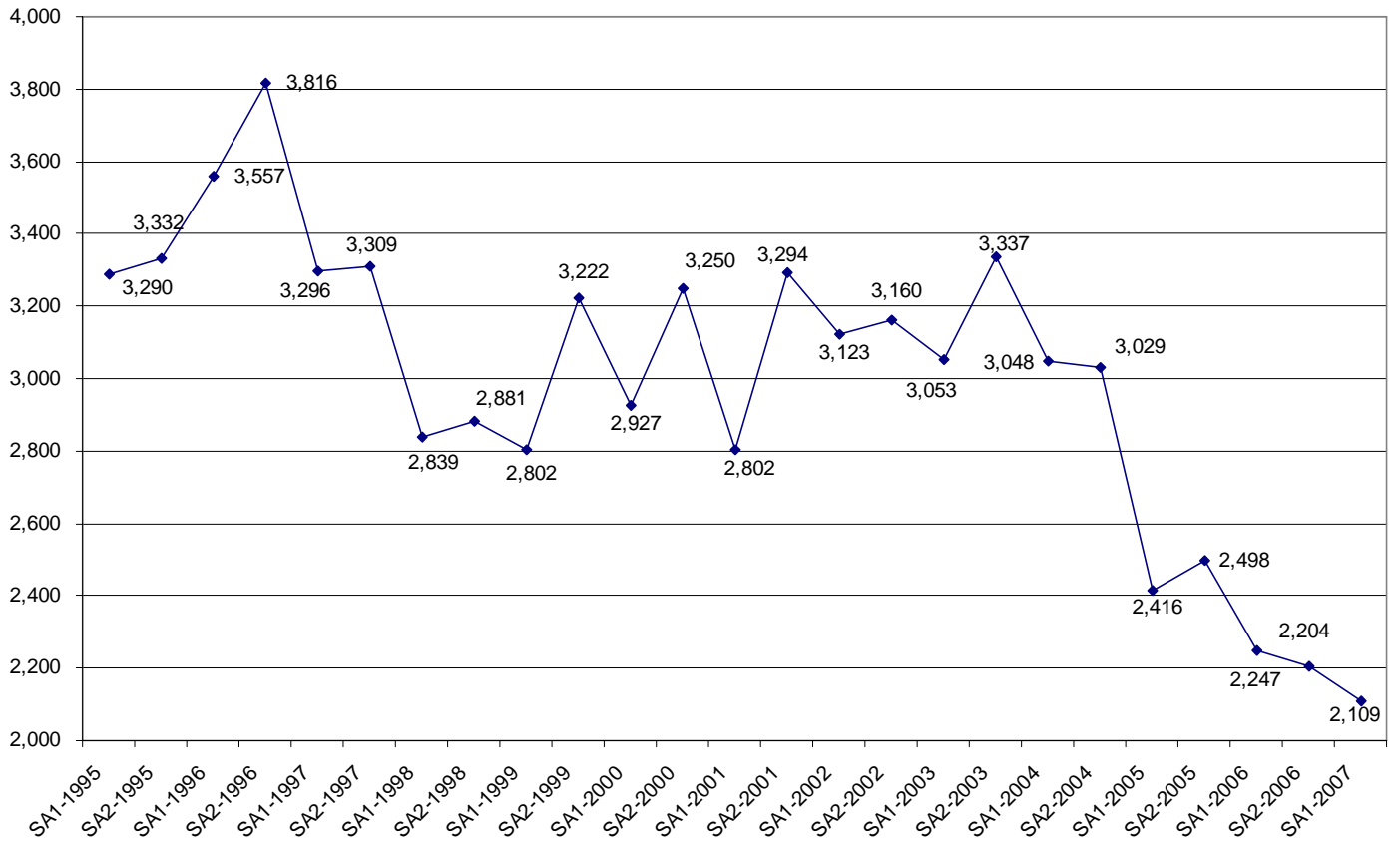
### SEMI-ANNUAL ROBBERY COMPARISON IN TAMPA



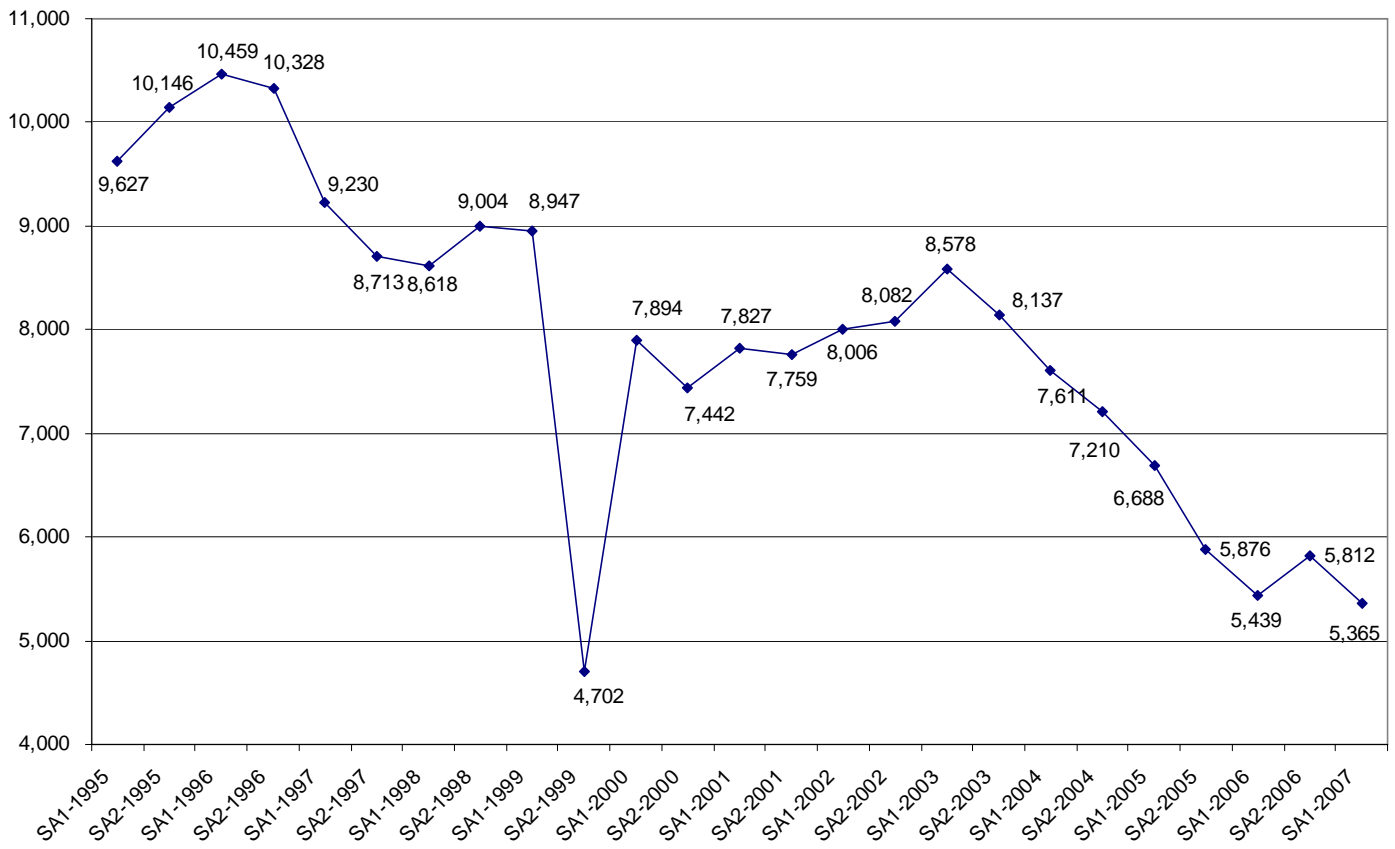
### SEMI-ANNUAL AGGRAVATED ASSAULT COMPARISON IN TAMPA



### SEMI-ANNUAL BURGLARY COMPARISON IN TAMPA



### SEMI-ANNUAL LARCENY COMPARISON IN TAMPA



### SEMI-ANNUAL VEHICLE THEFT COMPARISON IN TAMPA

