

TAMPA POLICE DEPARTMENT 2002 ANNUAL CRIME REPORT



**Bennie R. Holder
Chief of Police**

Prepared by:
Office of the Assistant Chief of Police
The Planning Bureau
March 2003

2002
TAMPA POLICE DEPARTMENT
ANNUAL CRIME REPORT
SUMMARY

There were 532 more Part I index crimes in 2002 from 2001. Part I index crime was slightly up 1.5% in Tampa in 2002 compared to 2001.

Violent crime was down by 327 occurrences in 2002 compared to 2001. This equates to a 4.9% decrease in violent crime.

Non-violent crime was up 859. This equates to a 3.0% increase compared to 2001.

There were three more Murders in 2002 compared to 2001, which equated to an 8.8% increase.

Sexual Battery was down 8.5% and Aggravated Assault was down 7.1%.

Robbery was down 1.1%.

Larceny had a slight increase of 3.2% for 2002 compared to 2001.

Burglaries and Vehicle Thefts both had increases

Burglaries were up by 187 occurrences. This is an increase of 3.1%.

There were 170 more reported auto thefts in 2002 compared to 2001, a slight increase of 2.6%

**TAMPA POLICE DEPARTMENT
ANNUAL 2002 CRIME REPORT**

	<u>2001</u>	<u>2002</u>	<u># DIFF.</u>	<u>% DIFF.</u>
MURDER	34	37	3	8.8%
SEXUAL BATTERY	281	257	-24	-8.5%
ROBBERY	2,359	2,334	-25	-1.1%
AGGRAVATED ASSAULT	3,942	3,661	-281	-7.1%
TOTAL VIOLENT	6,616	6,289	-327	-4.9%
BURGLARY	6,096	6,283	187	3.1%
LARCENY	15,586	16,088	502	3.2%
VEHICLE THEFT	6,550	6,720	170	2.6%
TOTAL NON-VIOLENT	28,232	29,091	859	3.0%
TOTAL PART ONE CRIME	34,848	35,380	532	1.5%

**DOMESTIC VIOLENCE
BY OFFENSE**

	<u>2001</u>	<u>2002</u>	<u>PERCENT CHANGE</u>
MURDER	7	5	-28.6%
MANSLAUGHTER	1	1	0.0%
FORCIBLE RAPE	44	45	2.3%
FORCIBLE SODOMY	3	4	33.3%
FORCIBLE FONDLING	8	7	-12.5%
AGGRAVATED ASSAULT	1,091	898	-17.7%
AGGRAVATED STALKING	16	27	68.8%
SIMPLE ASSAULT	3,262	2,878	-11.8%
THREAT/INTIMIDATION	0	0	
SIMPLE STALKING	0	0	
TOTAL	4,432	3,865	-12.8%

**DOMESTIC VIOLENCE
ARRESTS**

	<u>2001</u>	<u>2002</u>	<u>PERCENT CHANGE</u>
MURDER	4	5	25%
MANSLAUGHTER	1	1	0%
FORCIBLE RAPE	26	21	-19%
FORCIBLE SODOMY	1	0	-100%
FORCIBLE FONDLING	3	7	133%
AGGRAVATED ASSAULT	747	604	-19%
AGGRAVATED STALKING	12	16	33%
SIMPLE ASSAULT	2,007	1,735	-14%
THREAT/INTIMIDATION	0	0	
SIMPLE STALKING	0	0	
TOTAL	2,801	2,389	-15%

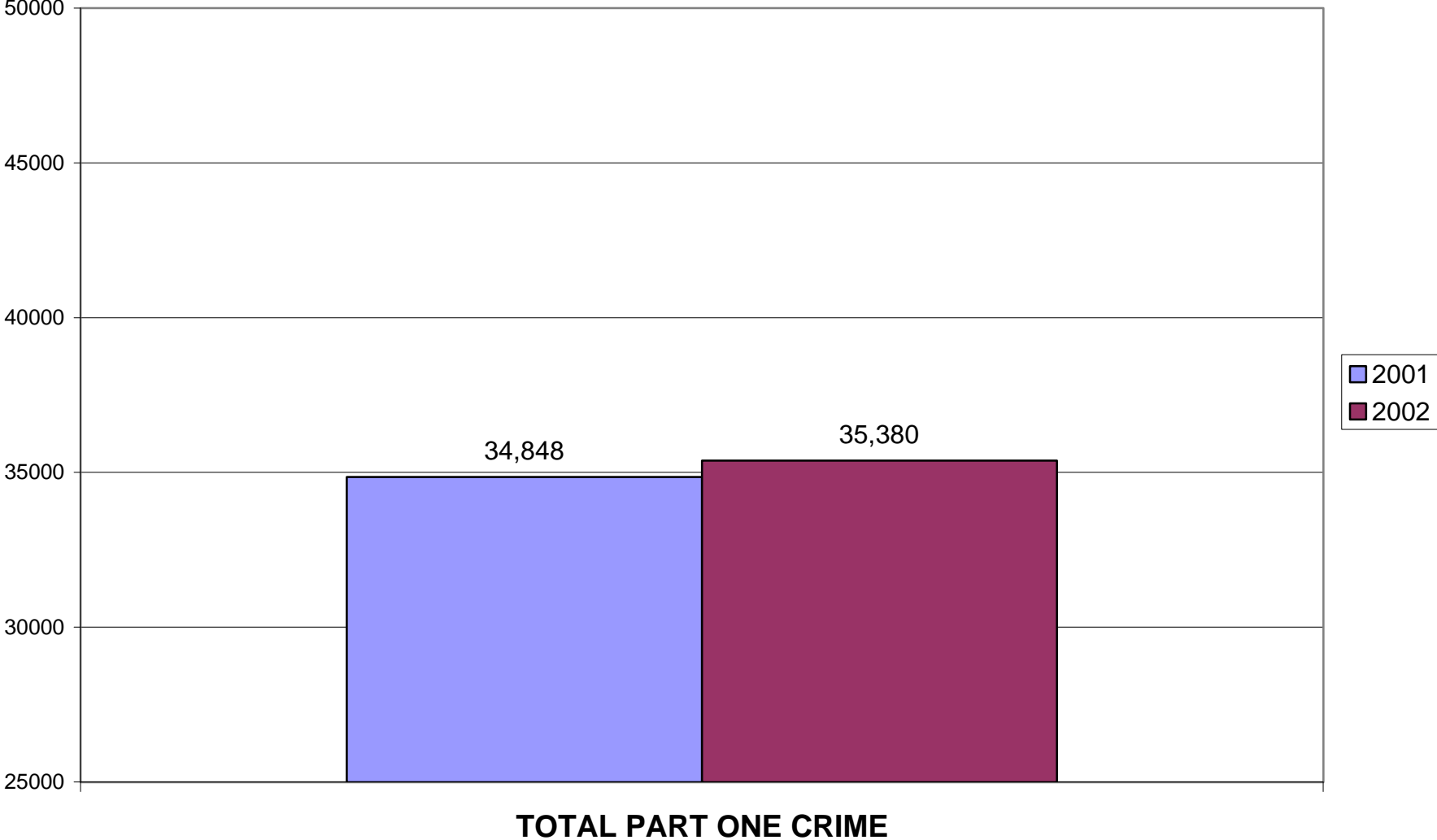
CRIME RATES
Per 100,000 Population

YEAR	POPULATION	RATE
1995	285,153	14,417.52
1996	289,337	14,816.98
1997	290,886	12,638.63
1998	293,390	12,256.72
1999	297,505	10,761.50
2000	303,447	11,094.50
2001	308,005	11,314.10
2002	308,005	11,486.83

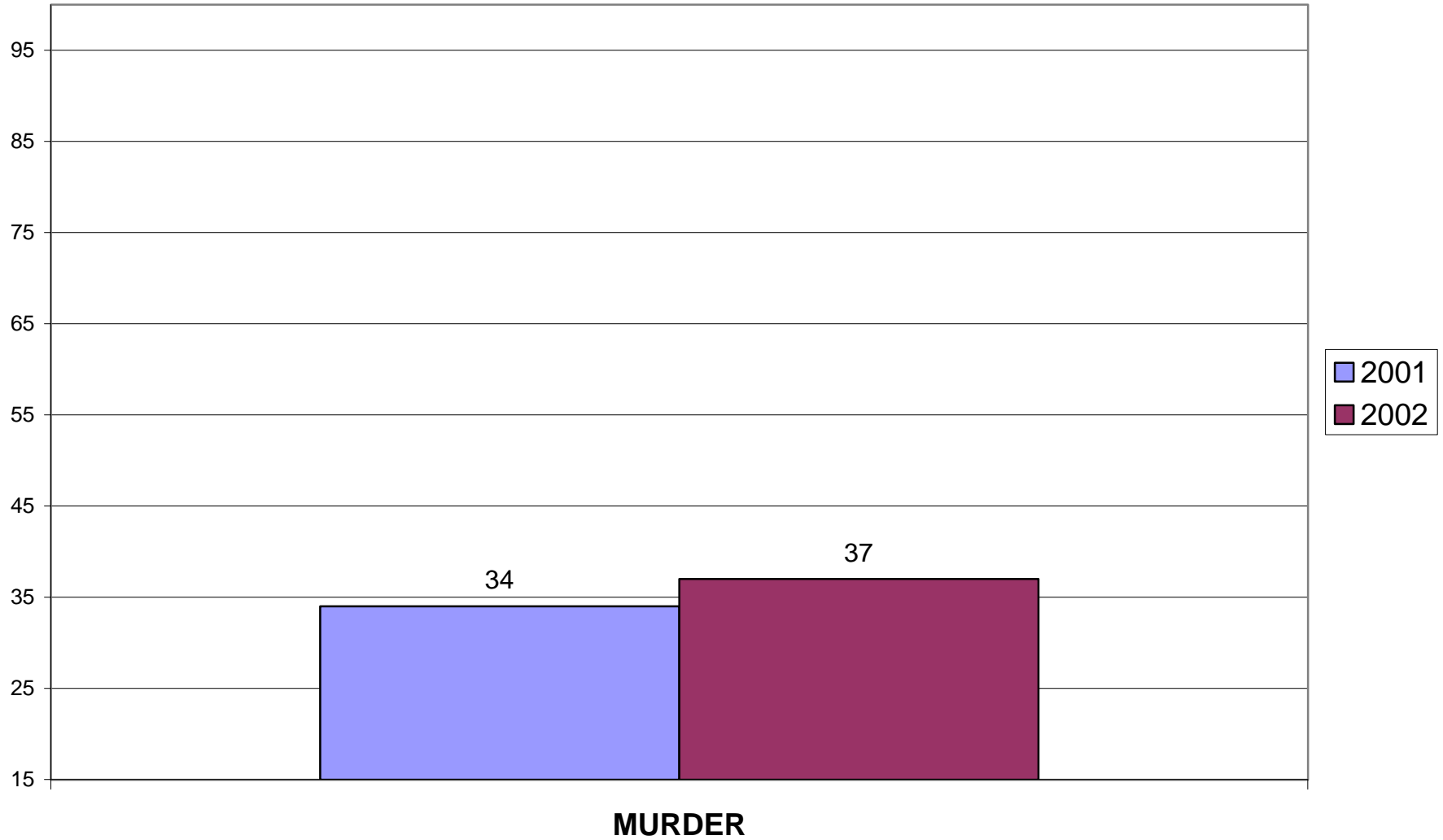
ARREST INFORMATION

	<u>2001</u>	<u>2002</u>	<u>DIFFERENCE</u>	<u>PERCENT CHANGE</u>
ADULT	19,289	23,913	4,624	24%
JUVENILE	3,061	2,987	-74	-2%
MALE	17,582	18,774	1,192	7%
FEMALE	4,768	5,139	371	8%
<u>TOTAL</u>	<u>22,350</u>	<u>23,913</u>	<u>1,563</u>	<u>7%</u>

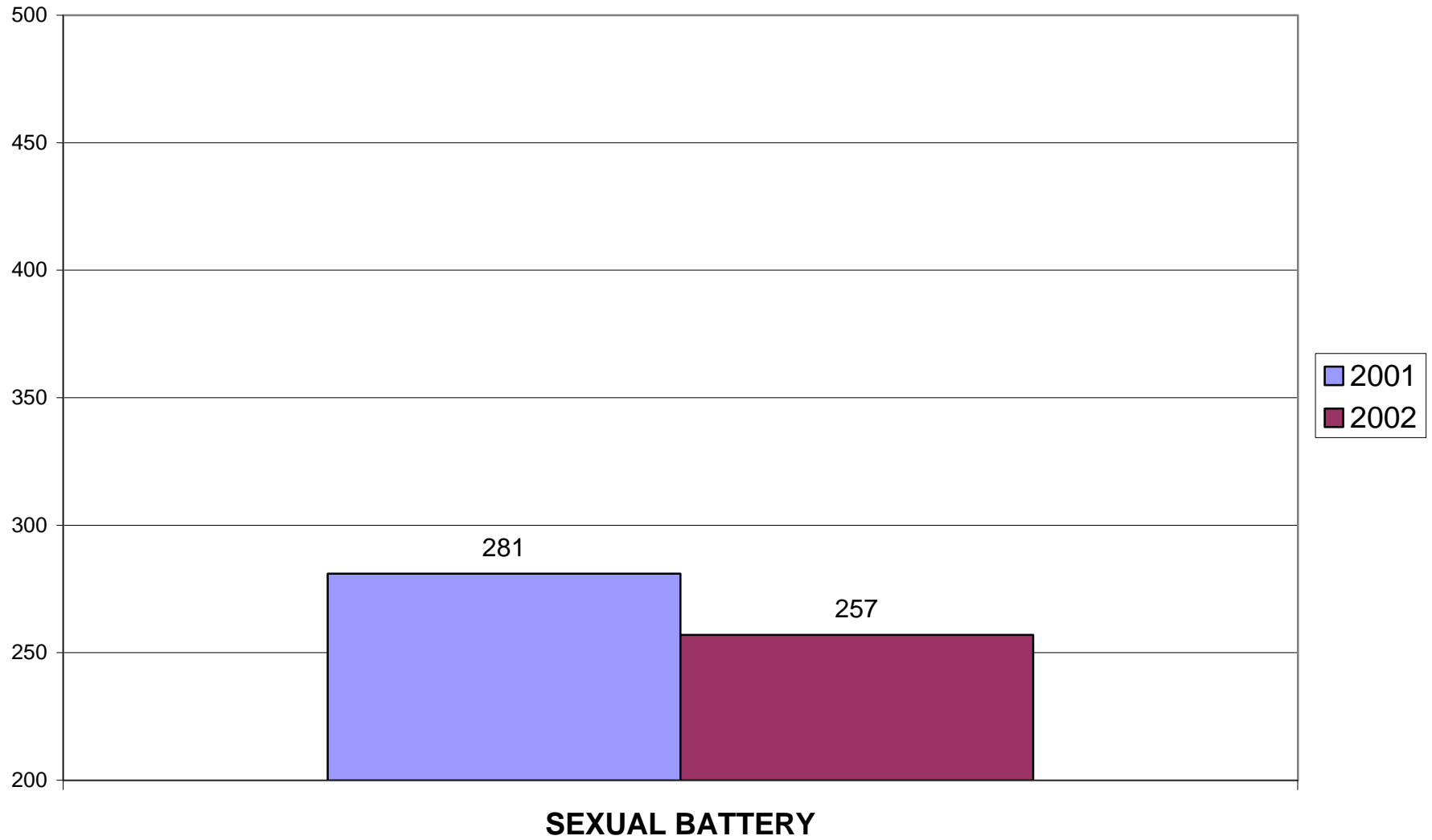
TAMPA POLICE DEPARTMENT 2002 ANNUAL CRIME REPORT



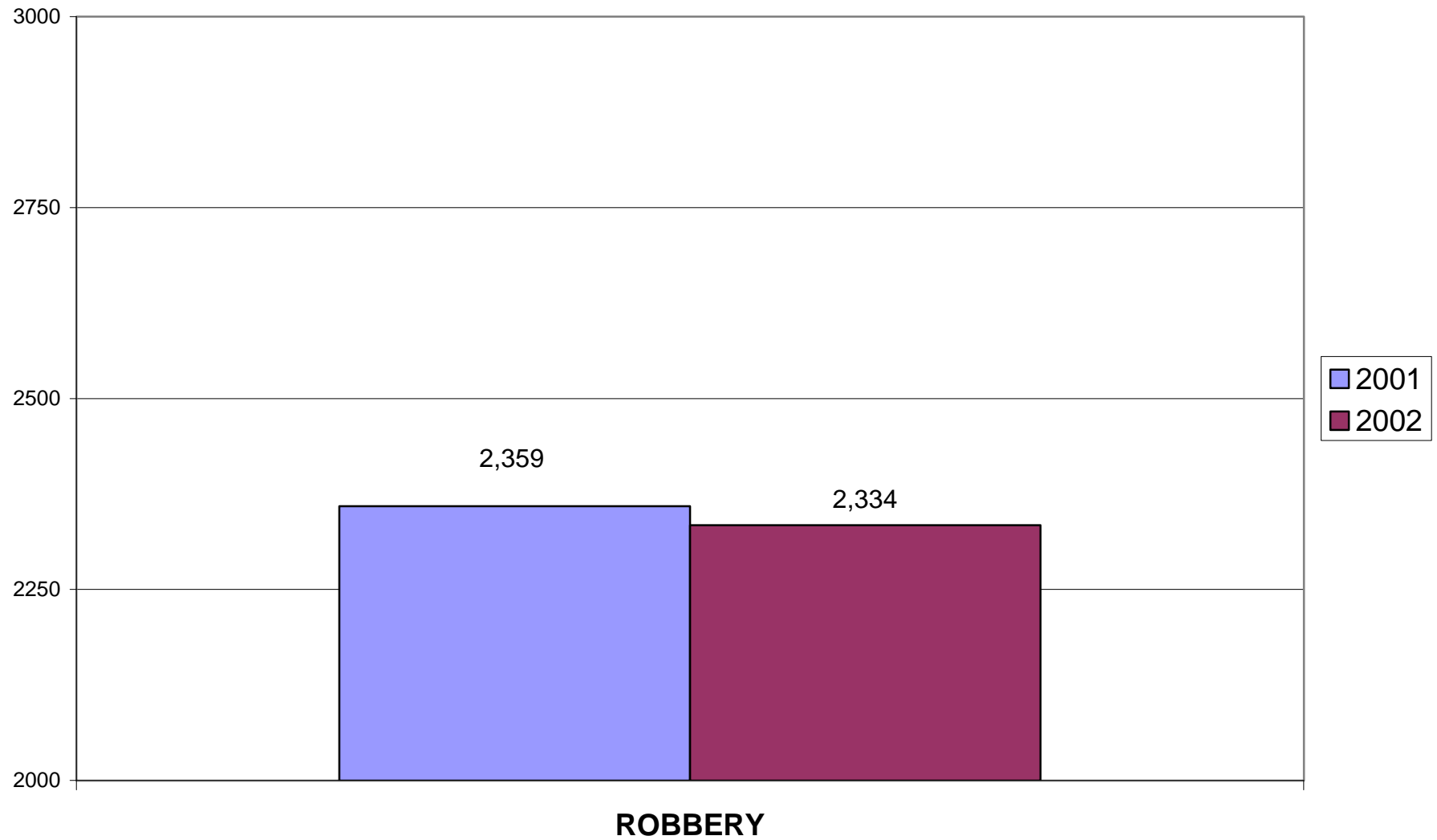
TAMPA POLICE DEPARTMENT 2002 ANNUAL CRIME REPORT



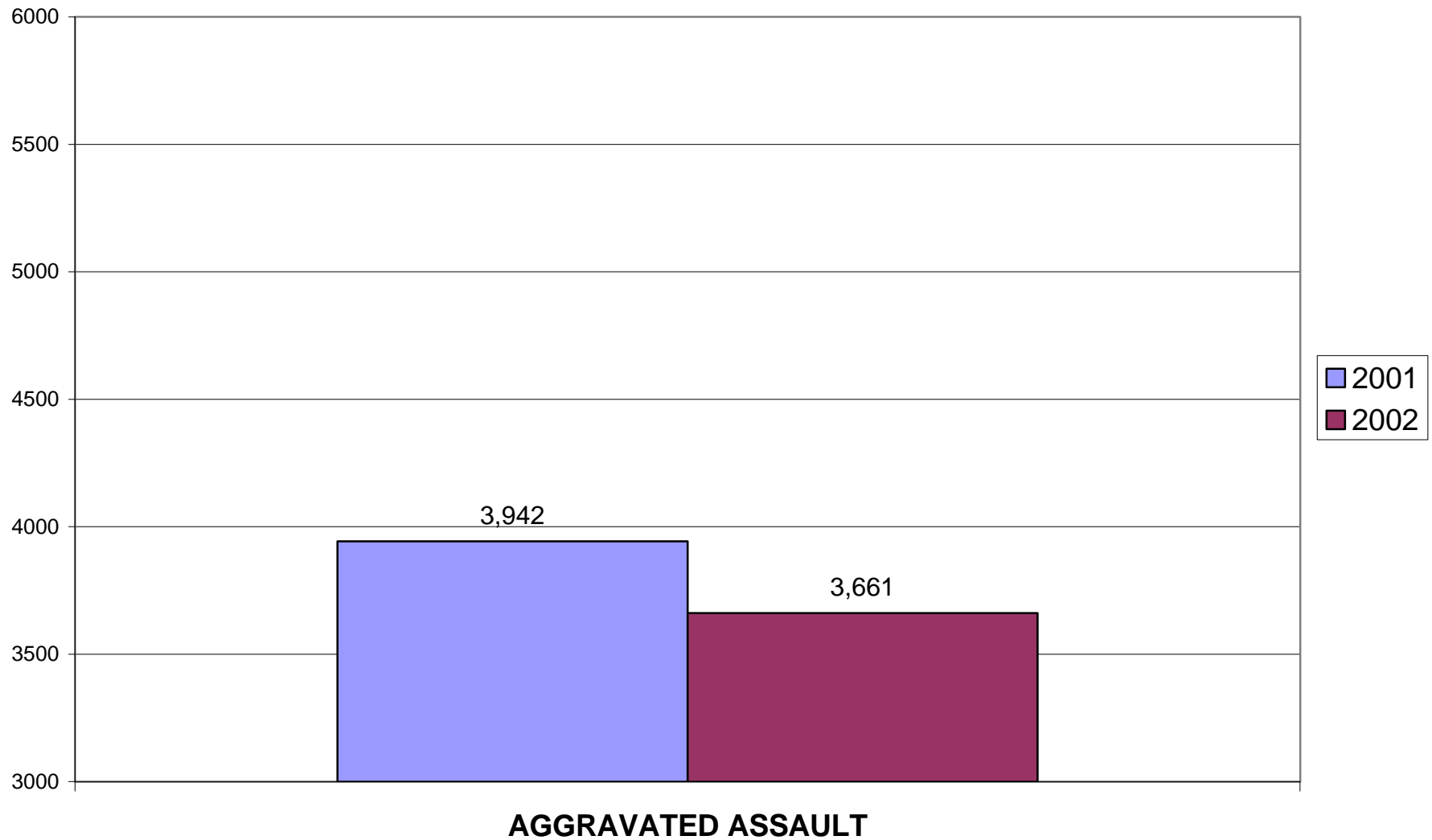
TAMPA POLICE DEPARTMENT 2002 ANNUAL CRIME REPORT



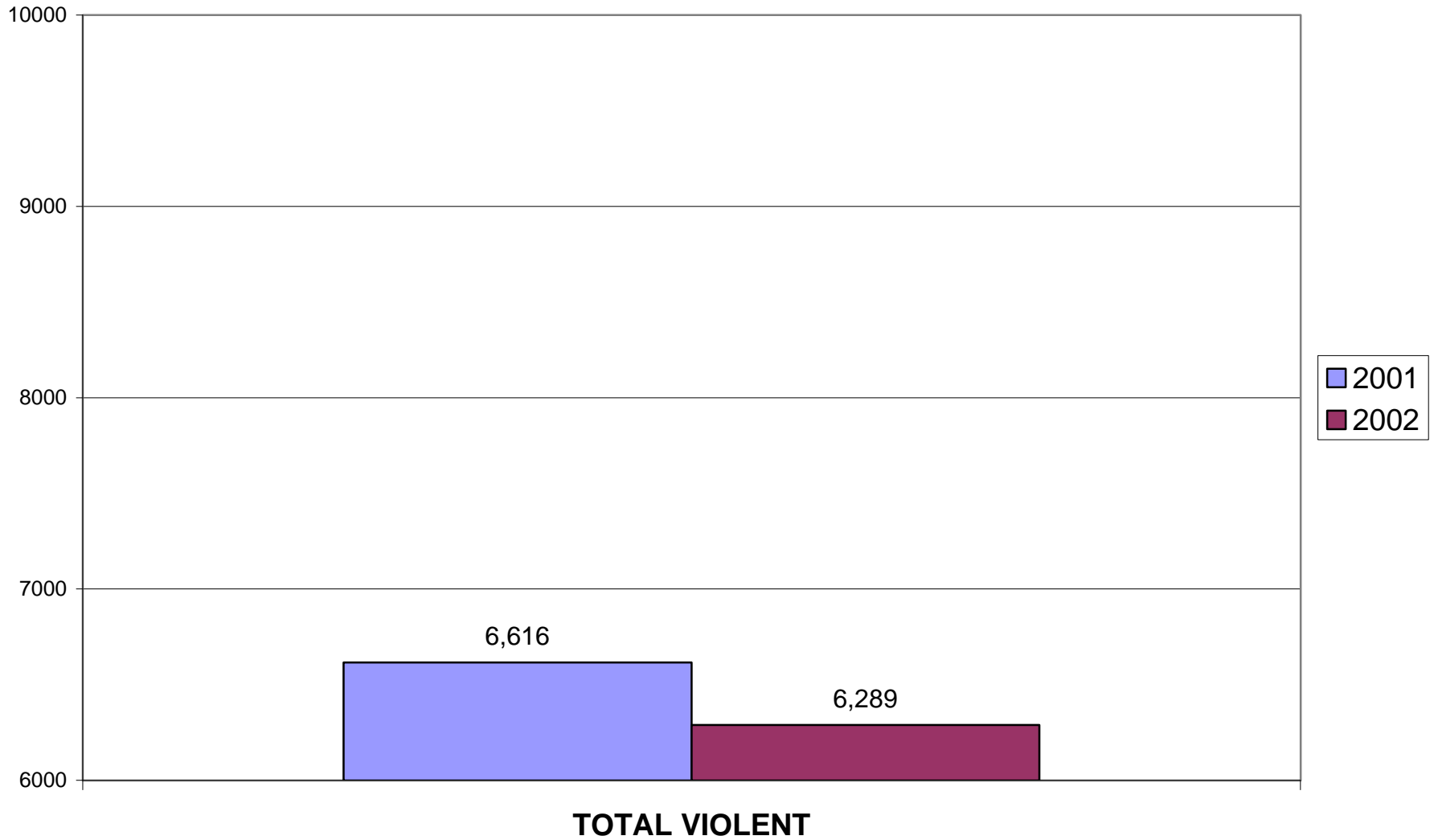
TAMPA POLICE DEPARTMENT 2002 ANNUAL CRIME REPORT



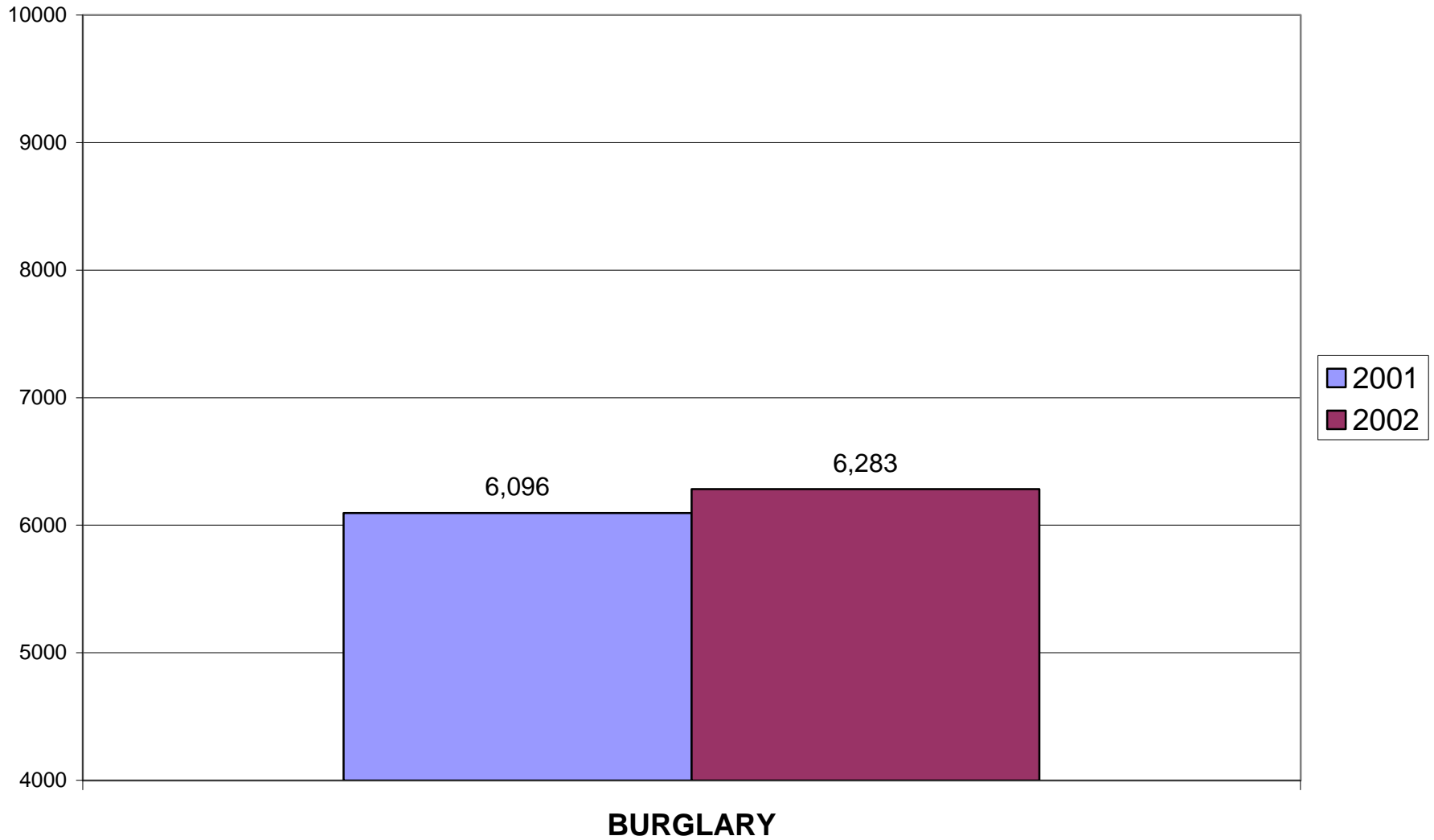
TAMPA POLICE DEPARTMENT 2002 ANNUAL CRIME REPORT



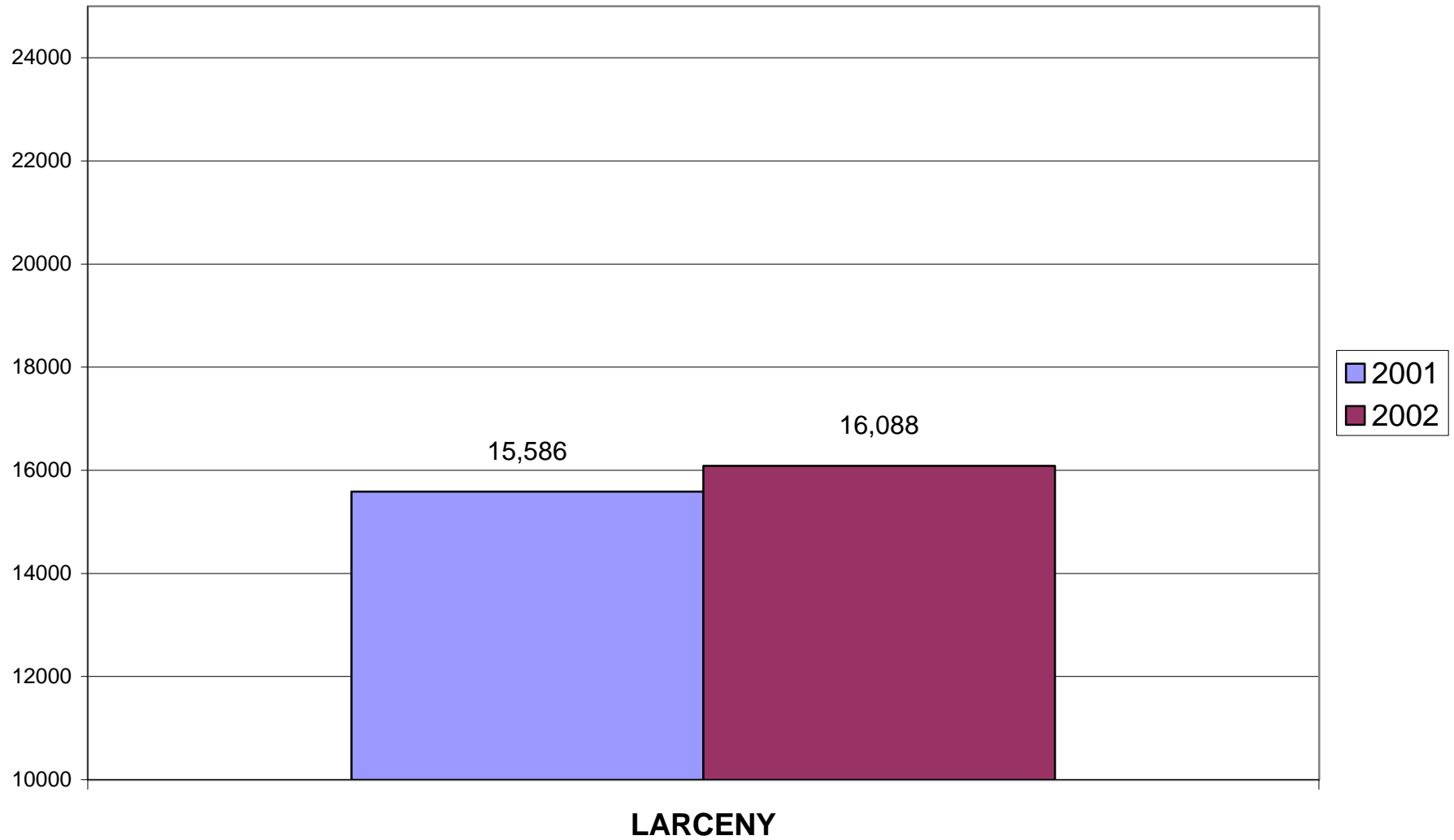
TAMPA POLICE DEPARTMENT 2002 ANNUAL CRIME REPORT



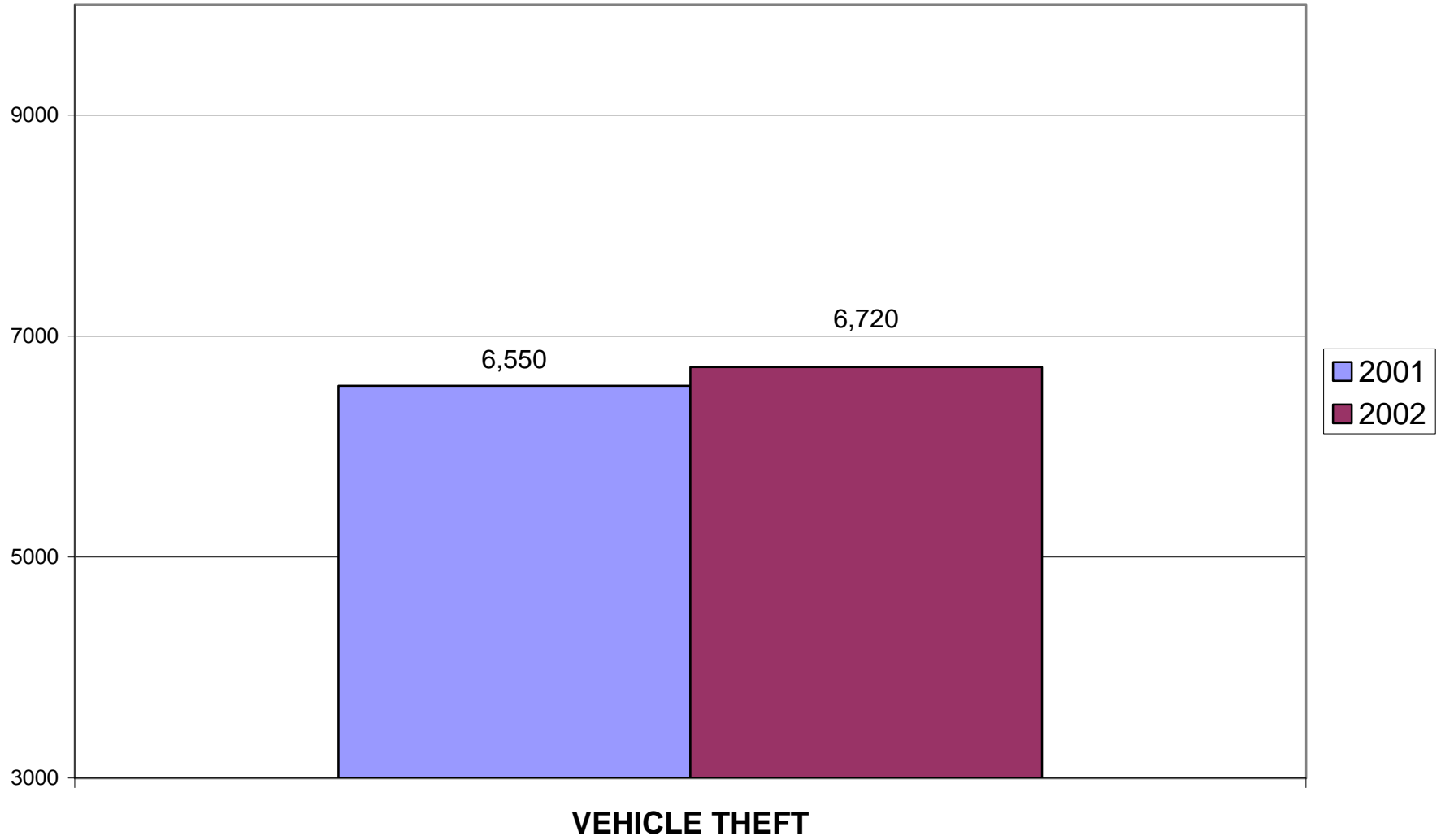
TAMPA POLICE DEPARTMENT 2002 ANNUAL CRIME REPORT



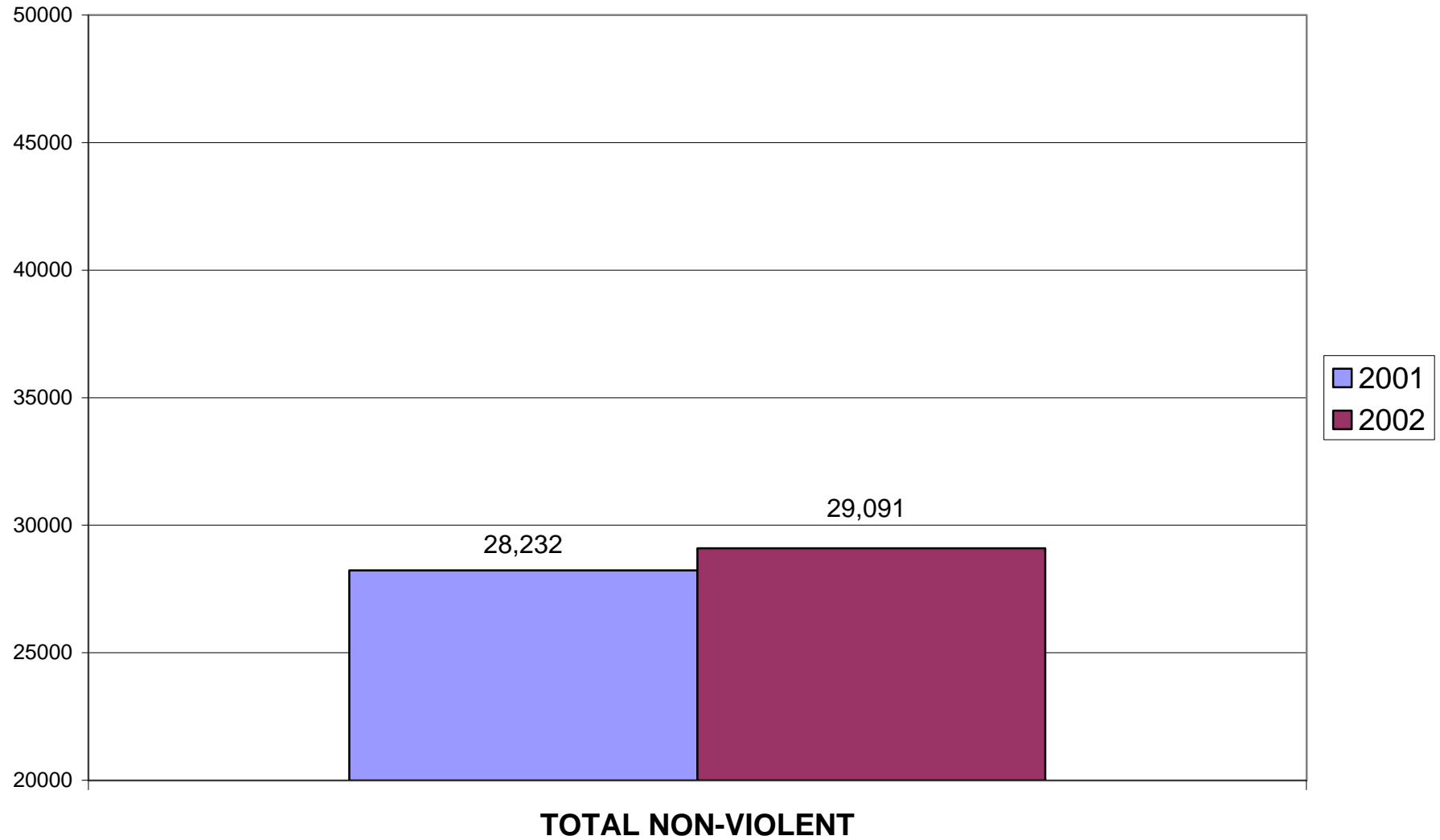
TAMPA POLICE DEPARTMENT 2002 ANNUAL CRIME REPORT



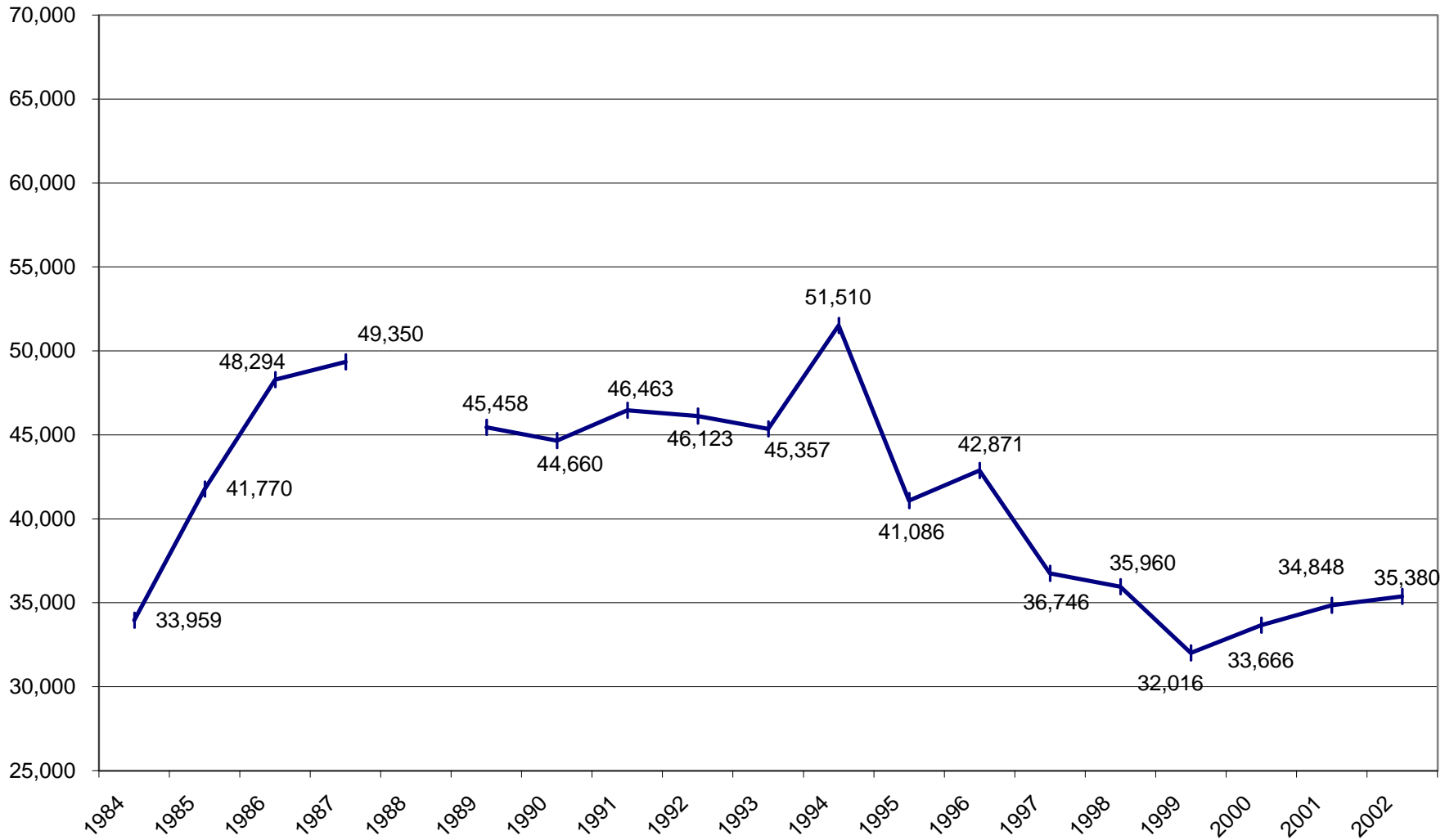
TAMPA POLICE DEPARTMENT 2002 ANNUAL CRIME REPORT



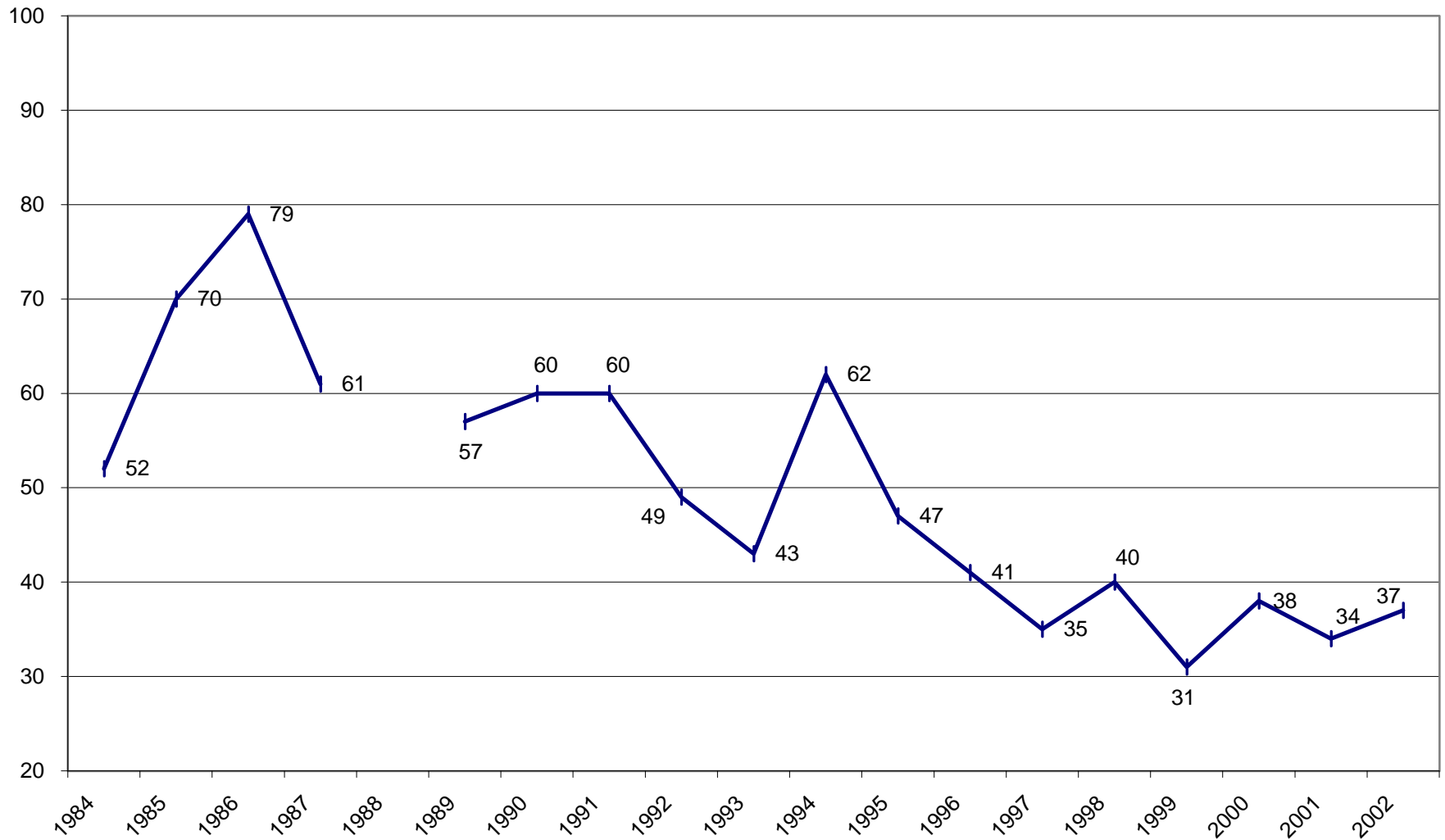
TAMPA POLICE DEPARTMENT 2002 ANNUAL CRIME REPORT



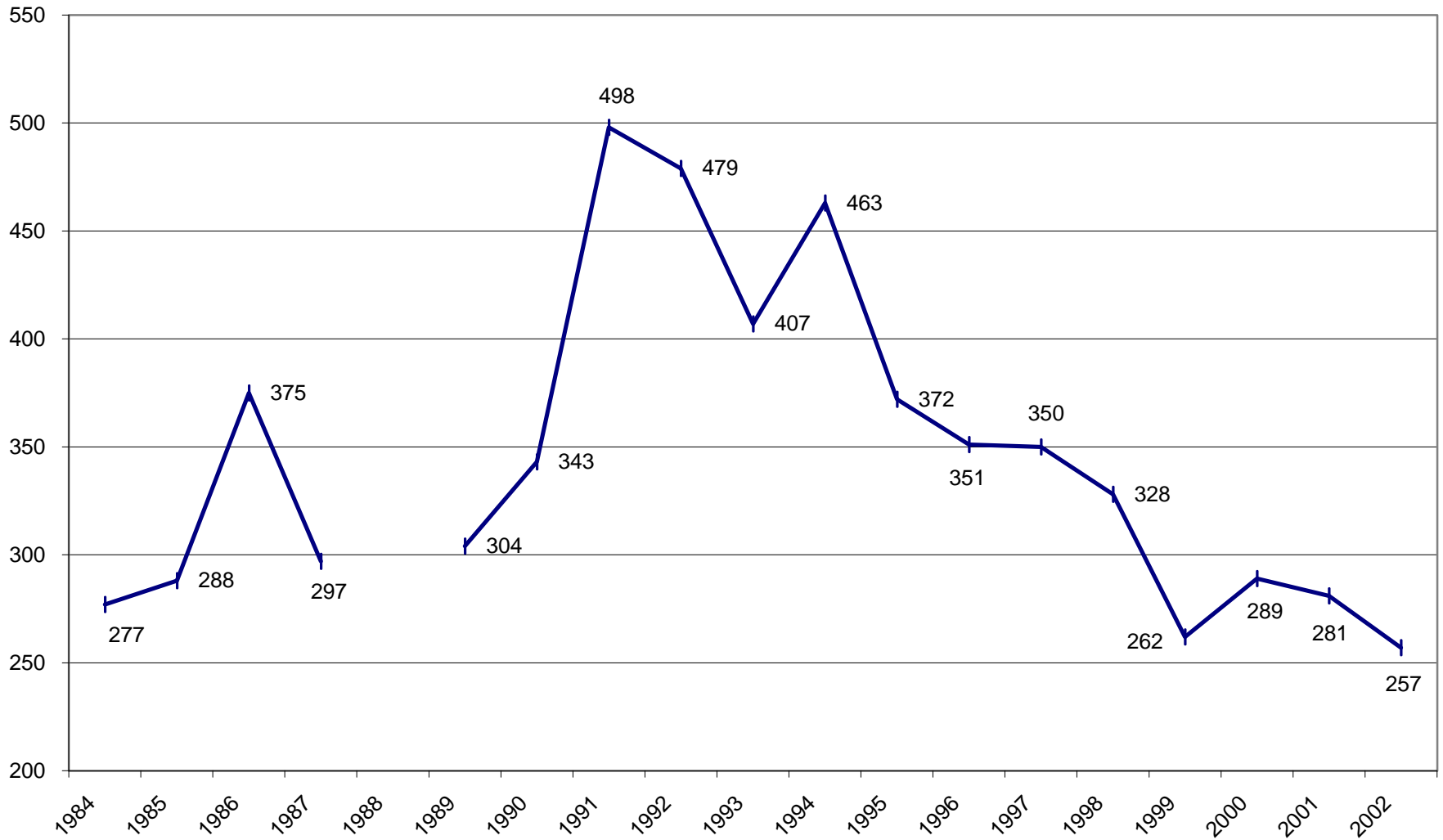
ANNUAL TOTAL PART 1 CRIME COMPARISON IN TAMPA
No Data Available for 1988



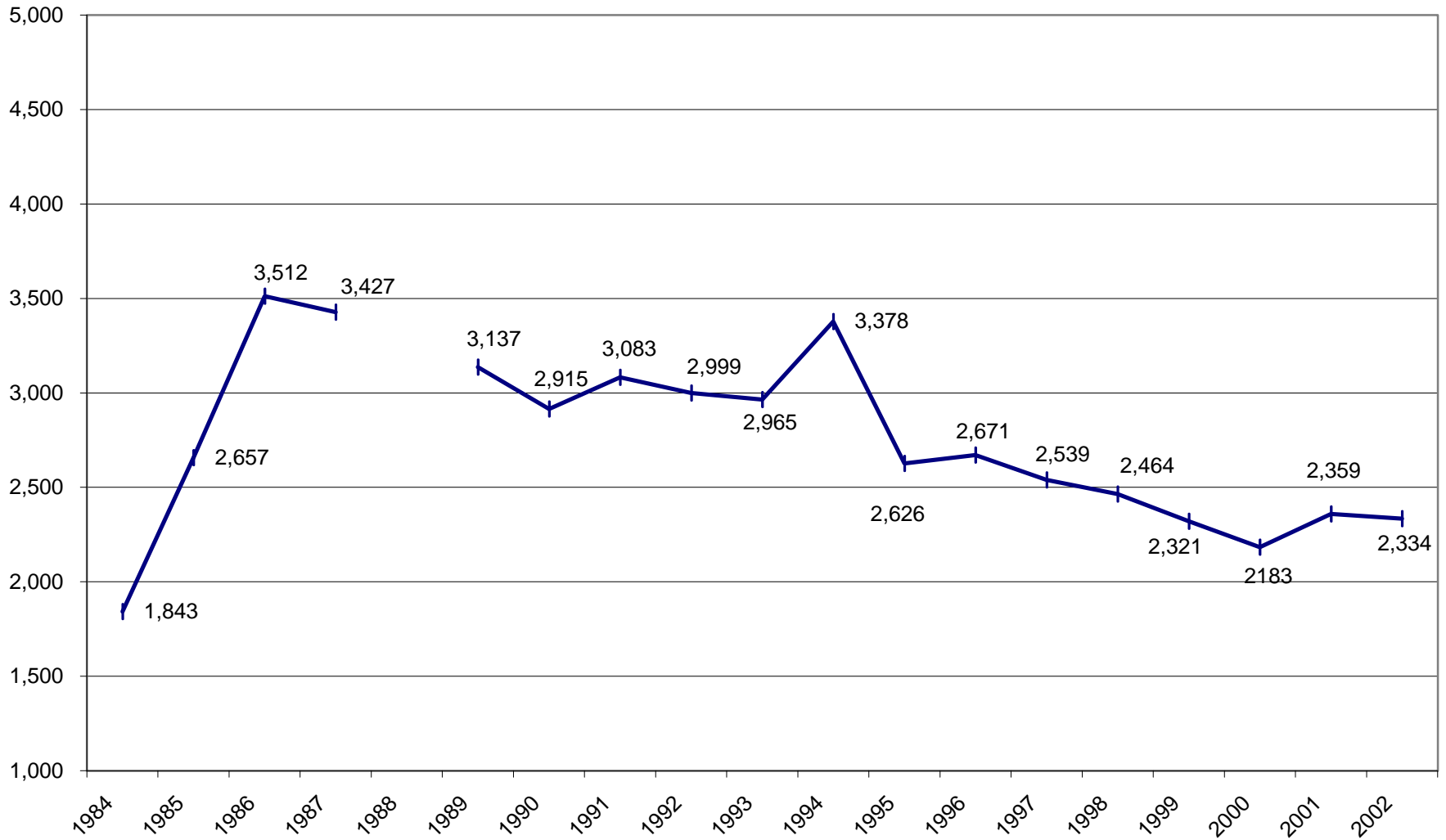
ANNUAL MURDER COMPARISON IN TAMPA
No Data Available for 1988



ANNUAL SEXUAL BATTERY COMPARISON IN TAMPA
No Data Available for 1988

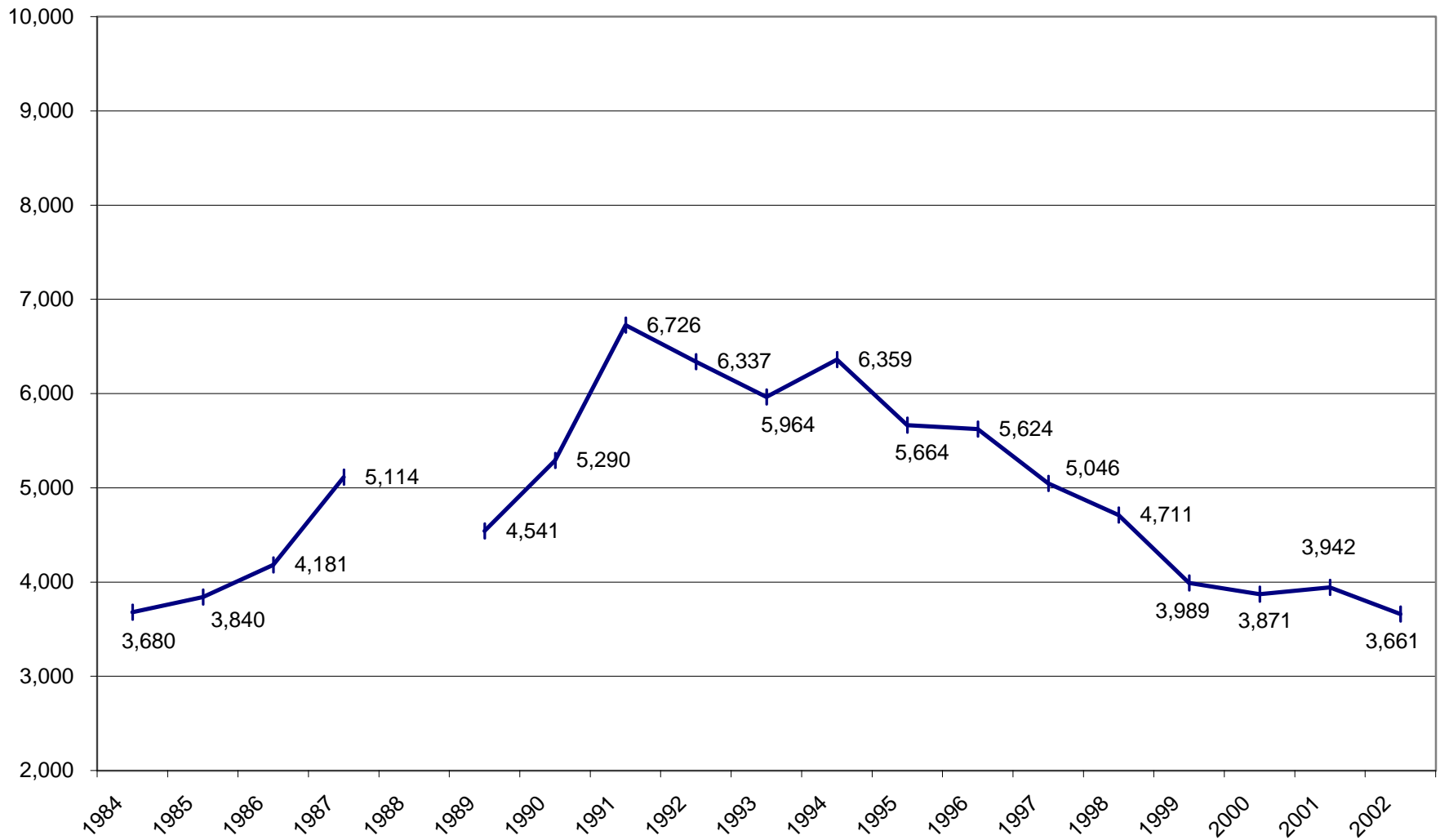


ANNUAL ROBBERY COMPARISON IN TAMPA
No Data Available for 1988

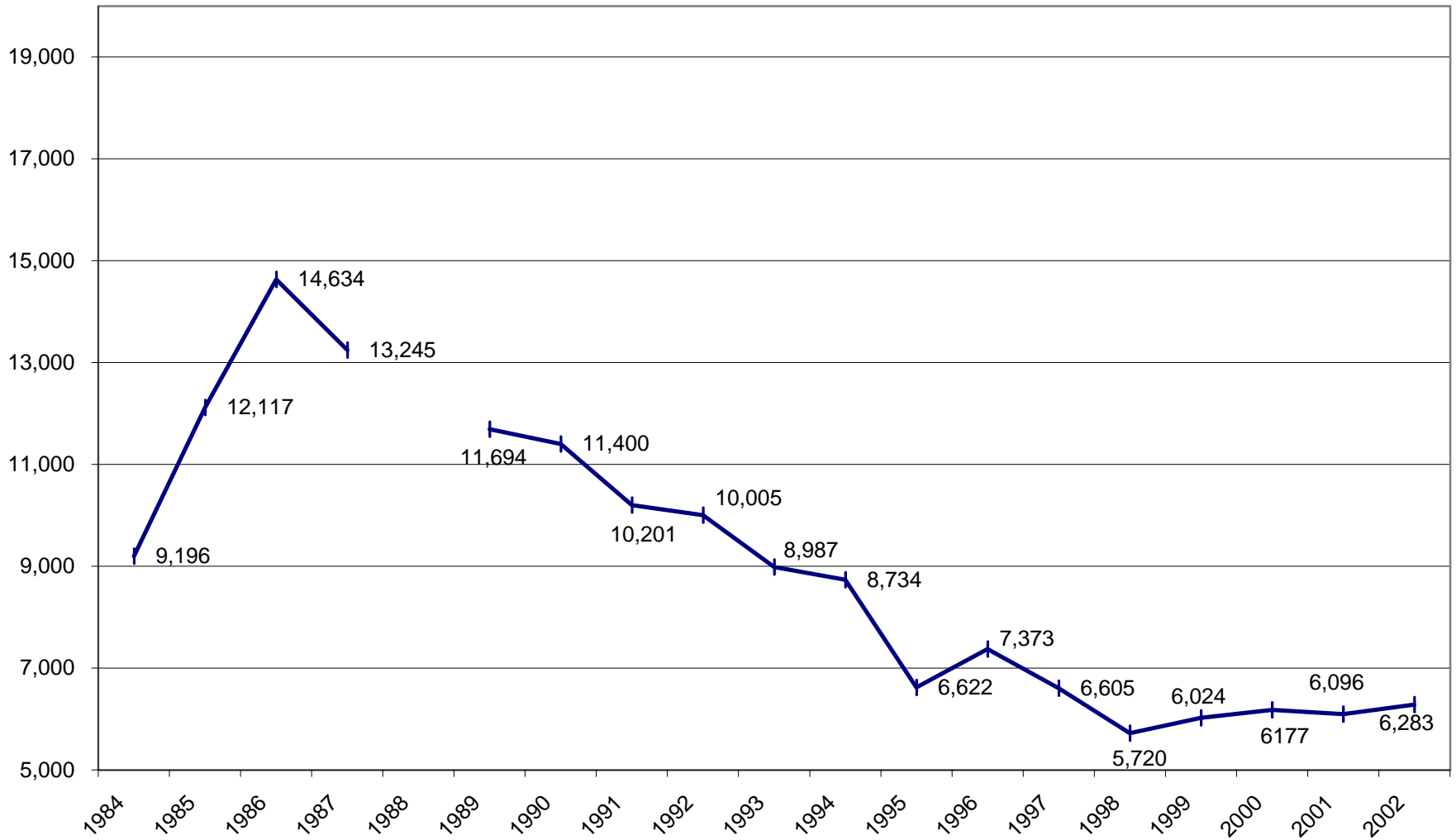


ANNUAL AGGRAVATED ASSAULT COMPARISON IN TAMPA

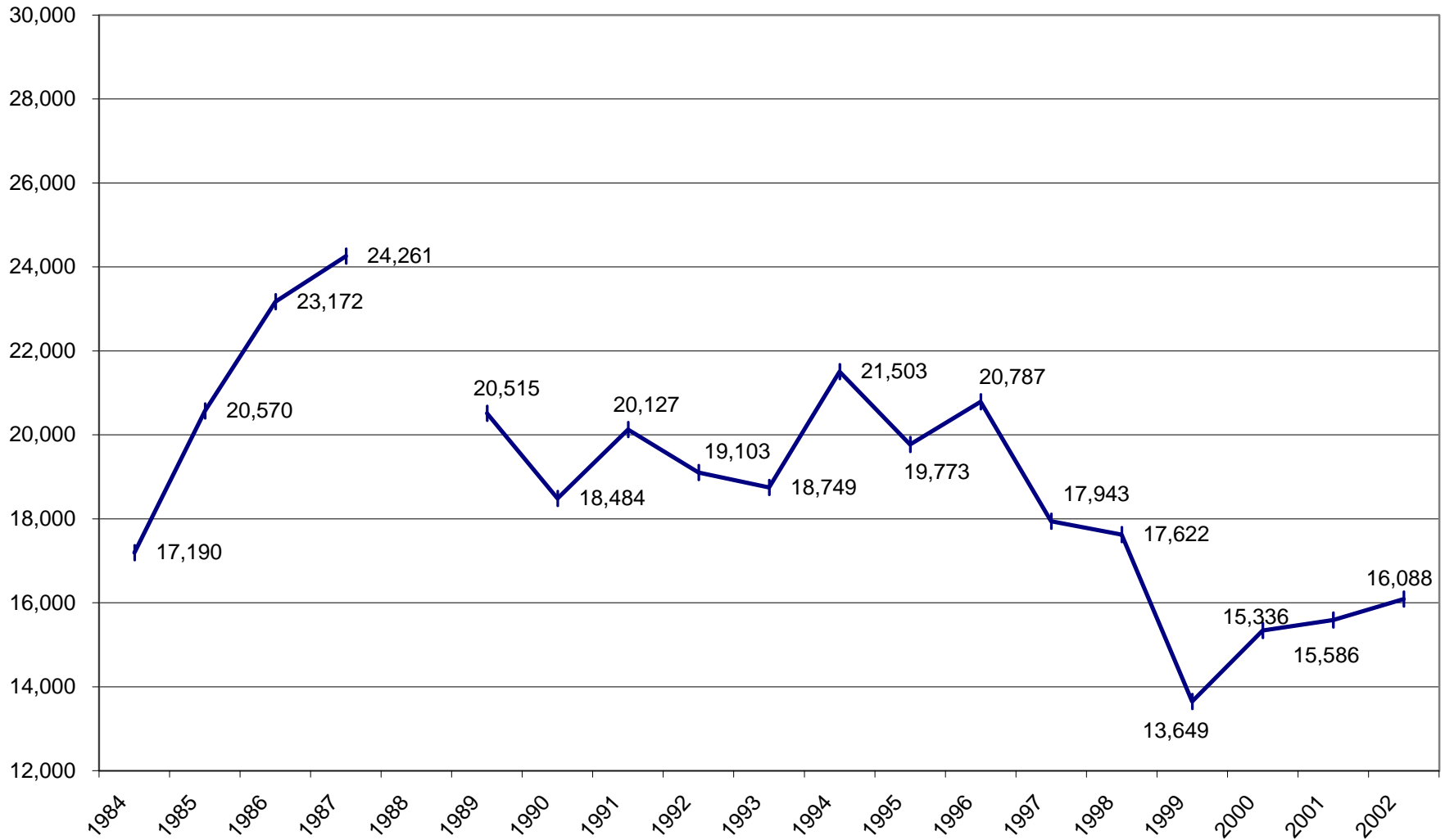
No Data Available for 1988



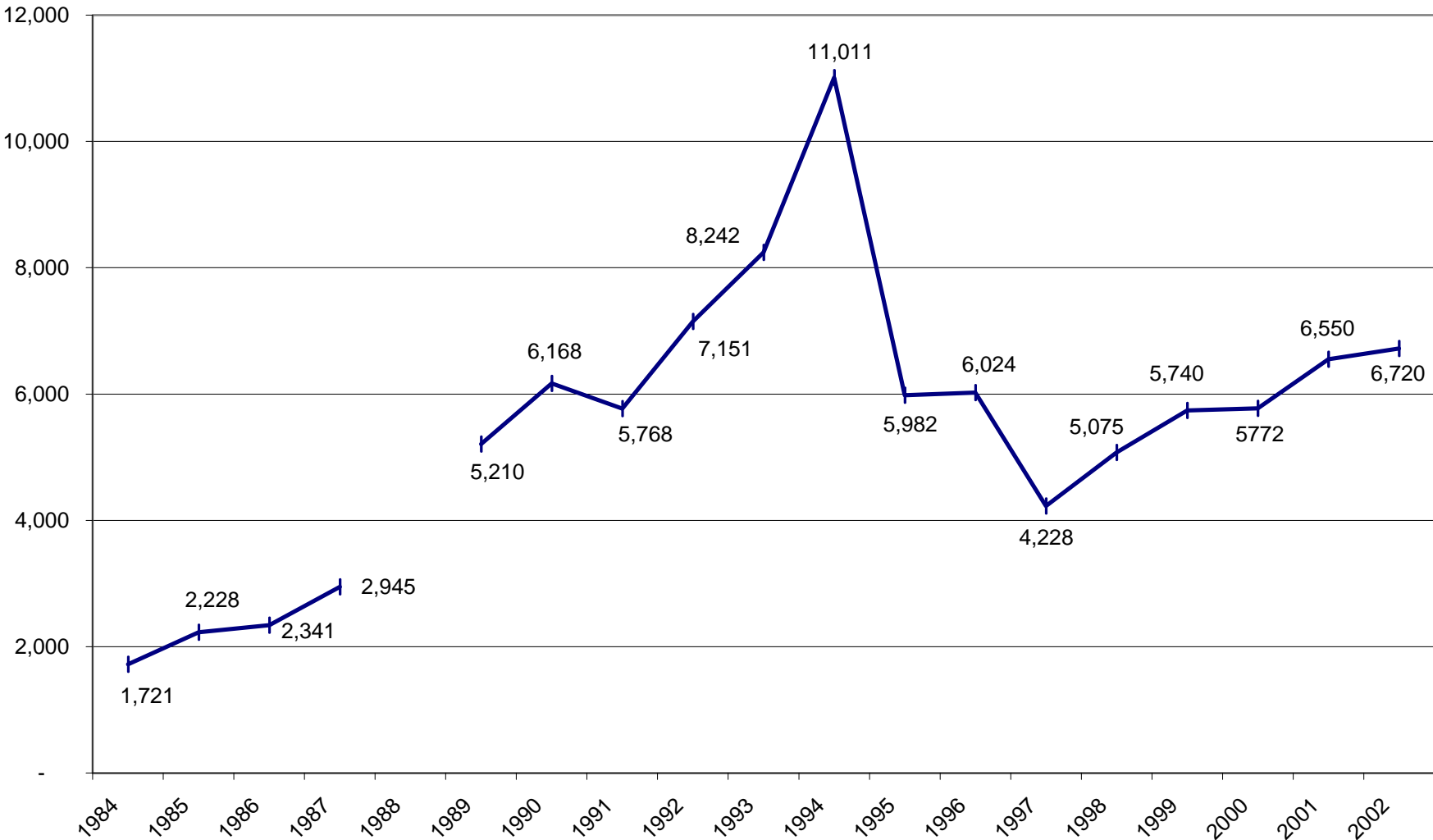
ANNUAL BURGLARY COMPARISON IN TAMPA
No Data Available for 1988



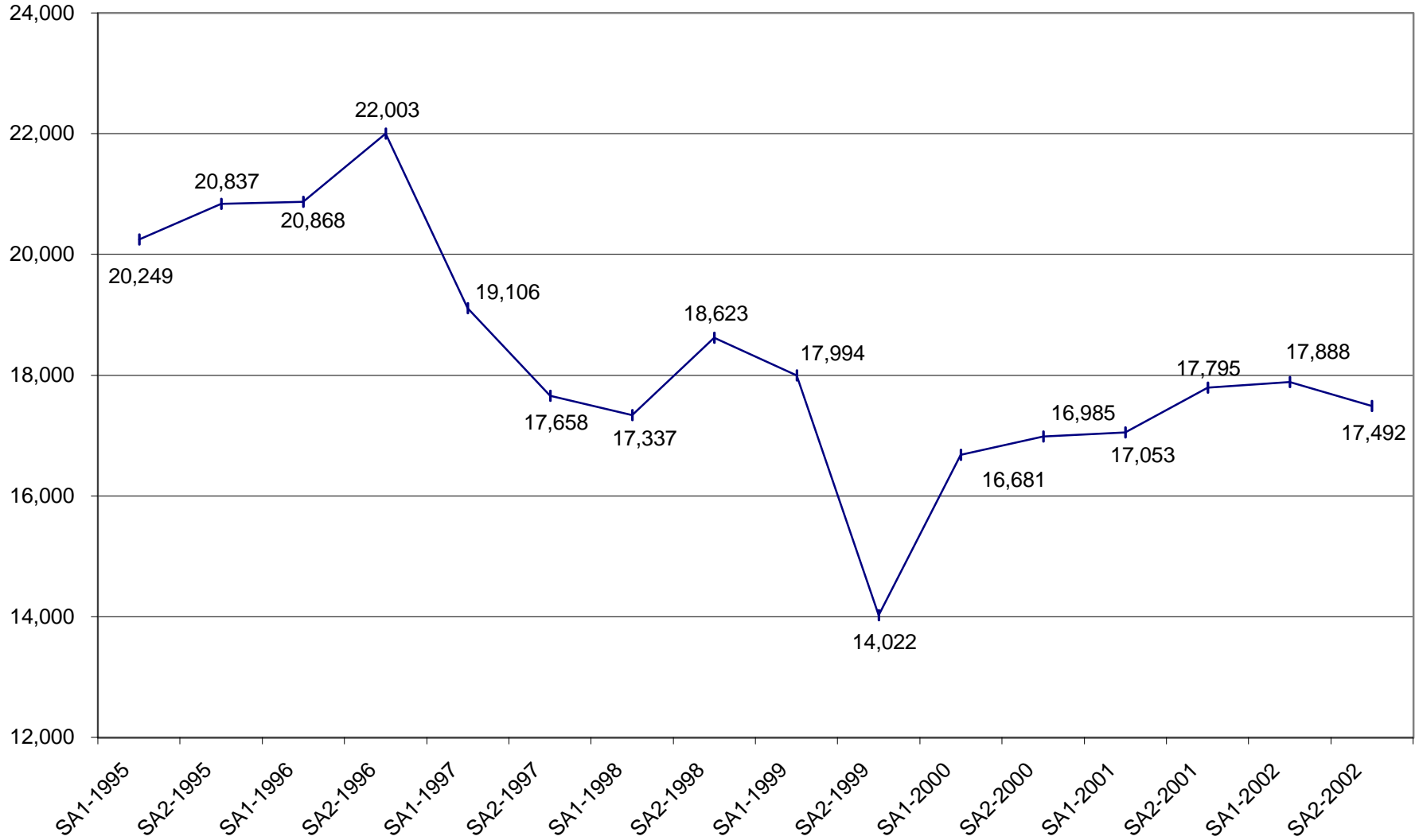
ANNUAL LARCENY COMPARISON IN TAMPA
No Data Available for 1988



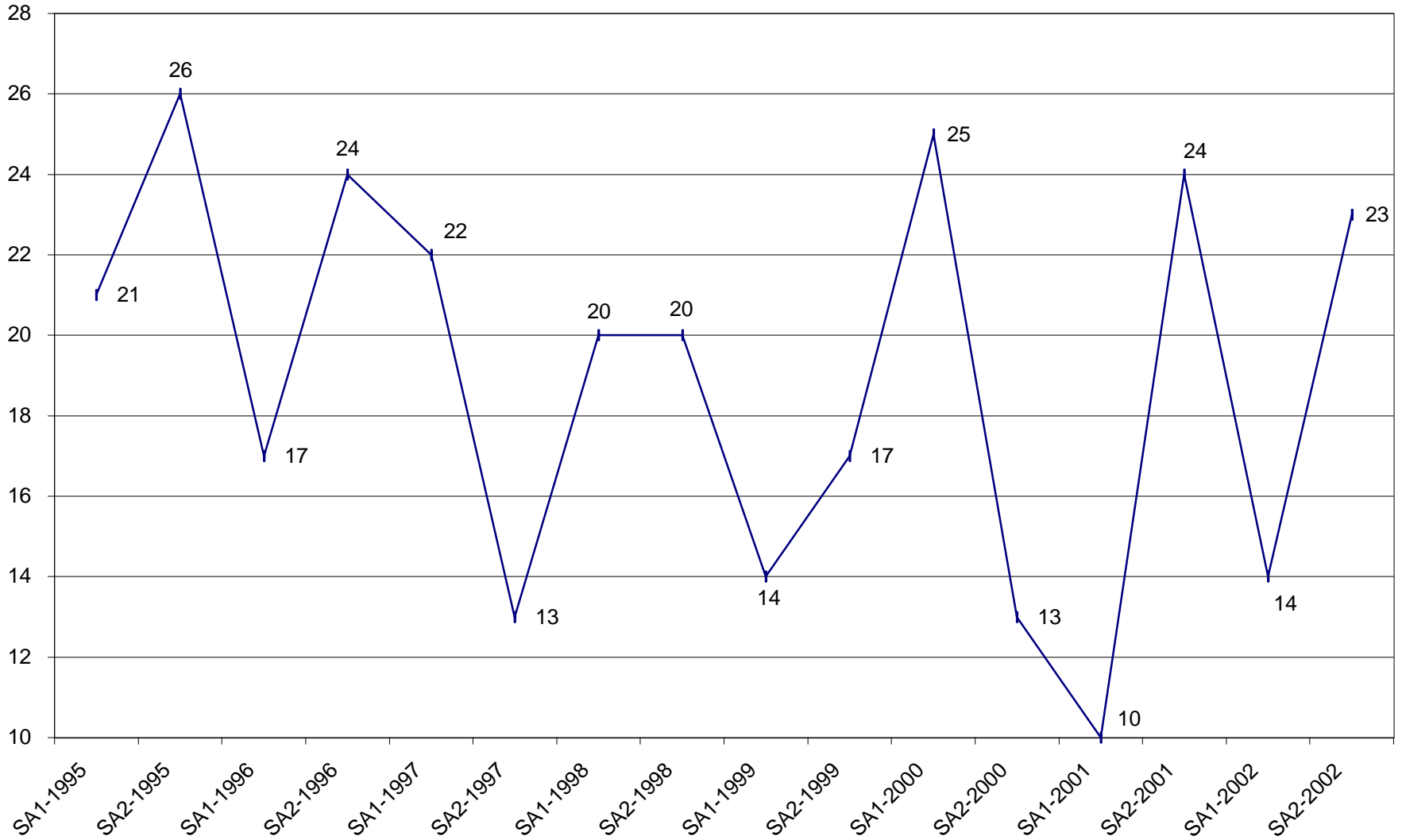
ANNUAL VEHICLE THEFT COMPARISON IN TAMPA
No Data Available for 1988



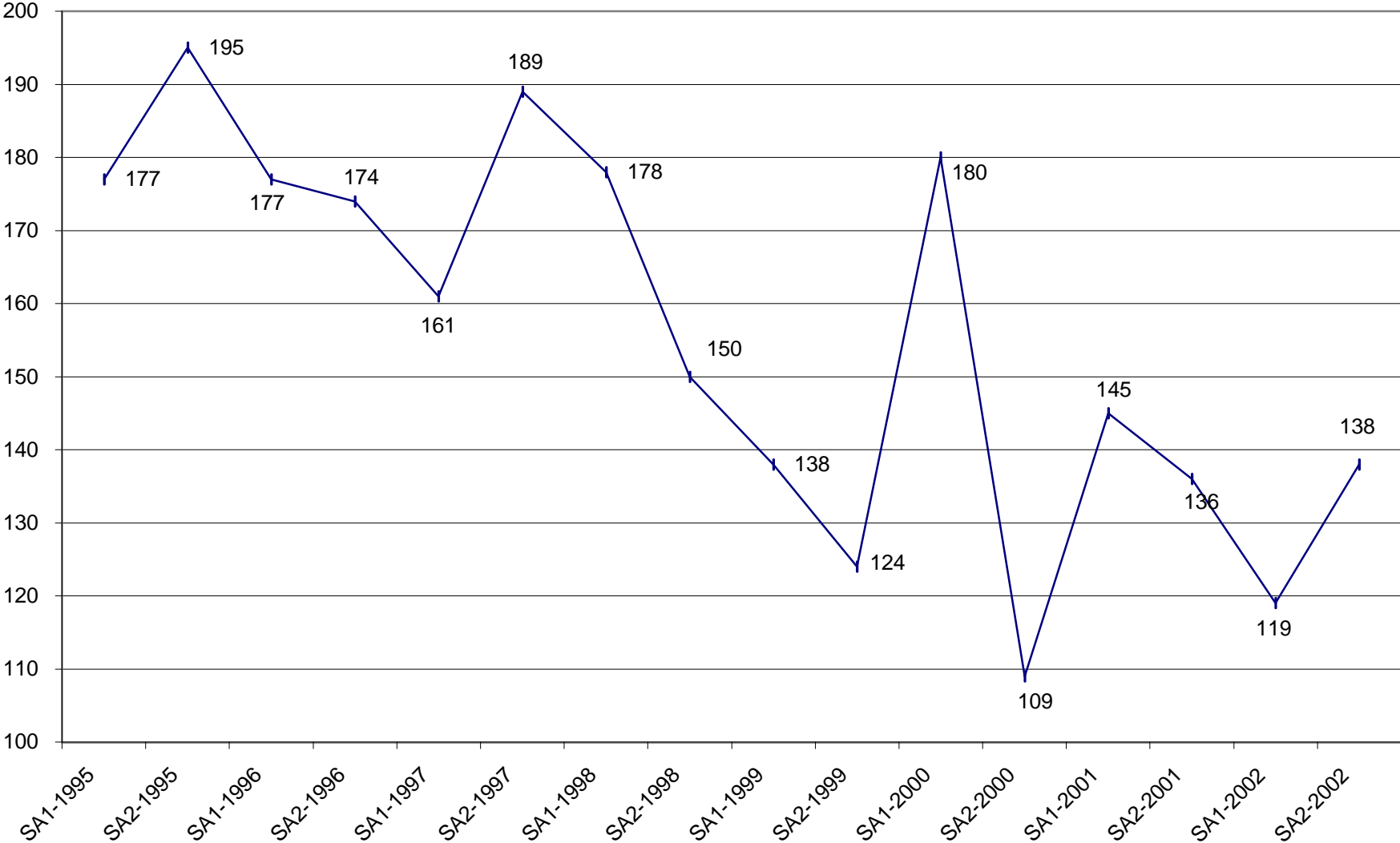
SEMI-ANNUAL TOTAL PART I CRIME COMPARISON IN TAMPA



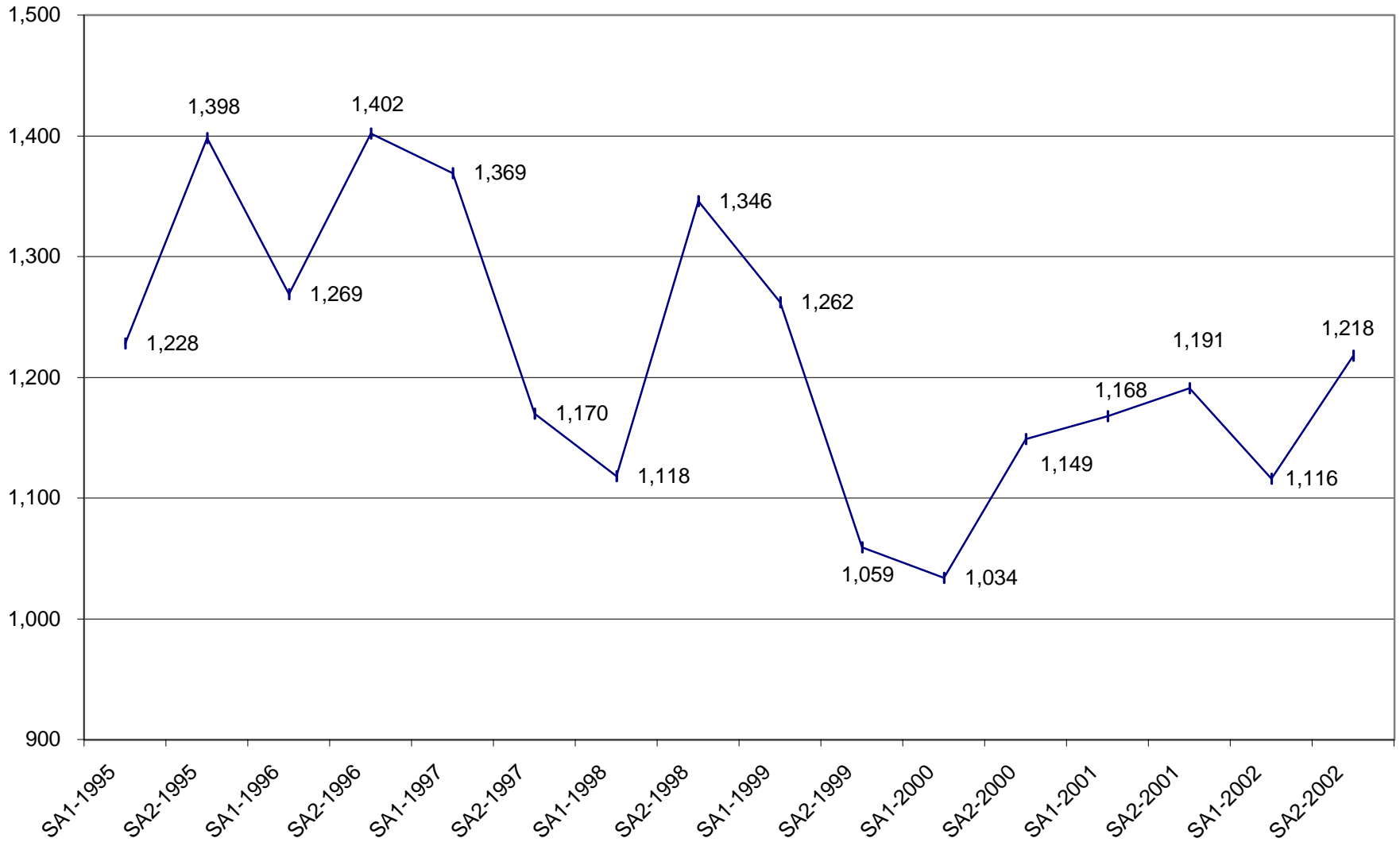
SEMI-ANNUAL MURDER COMPARISON IN TAMPA



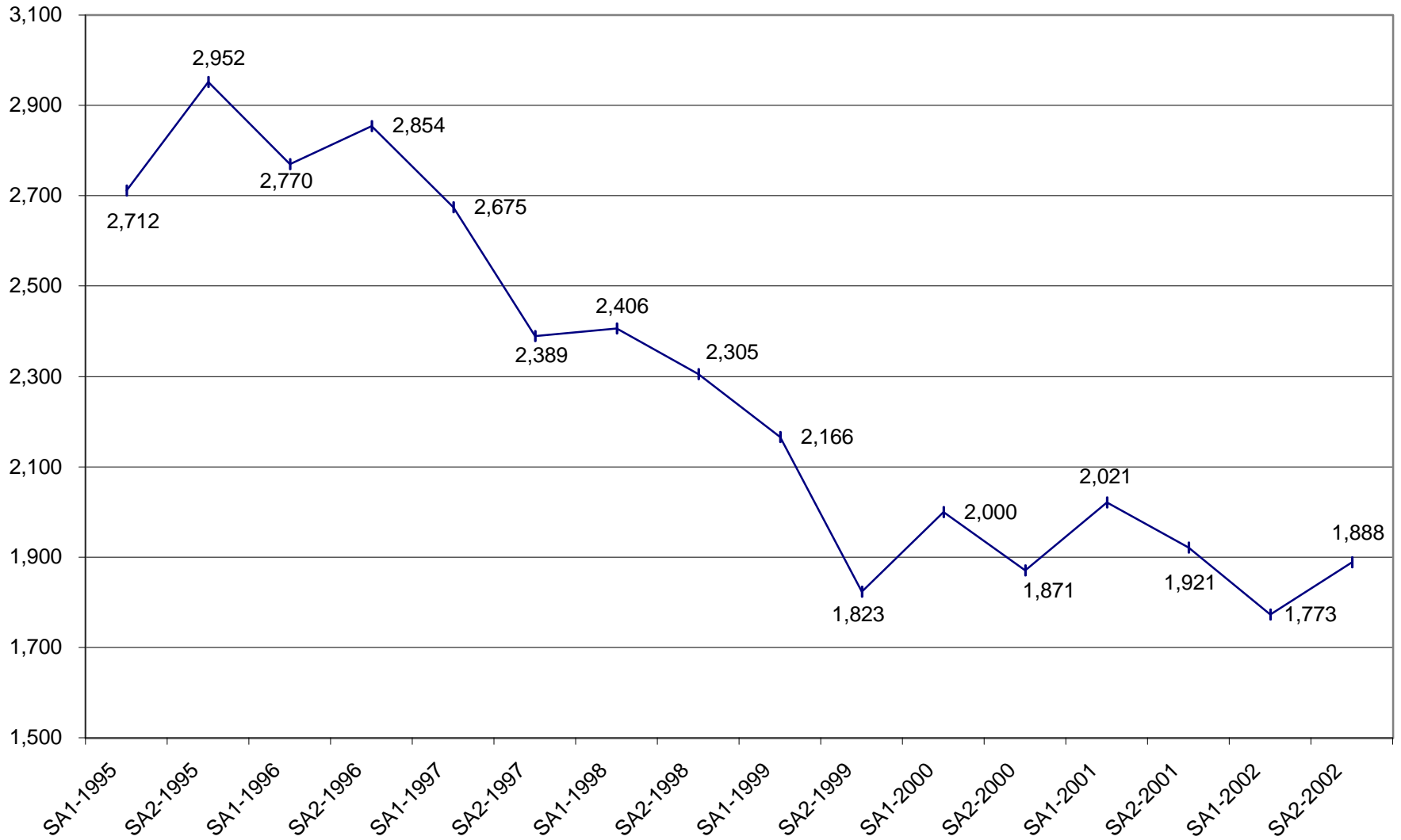
SEMI-ANNUAL SEXUAL ASSAULT COMPARISON IN TAMPA



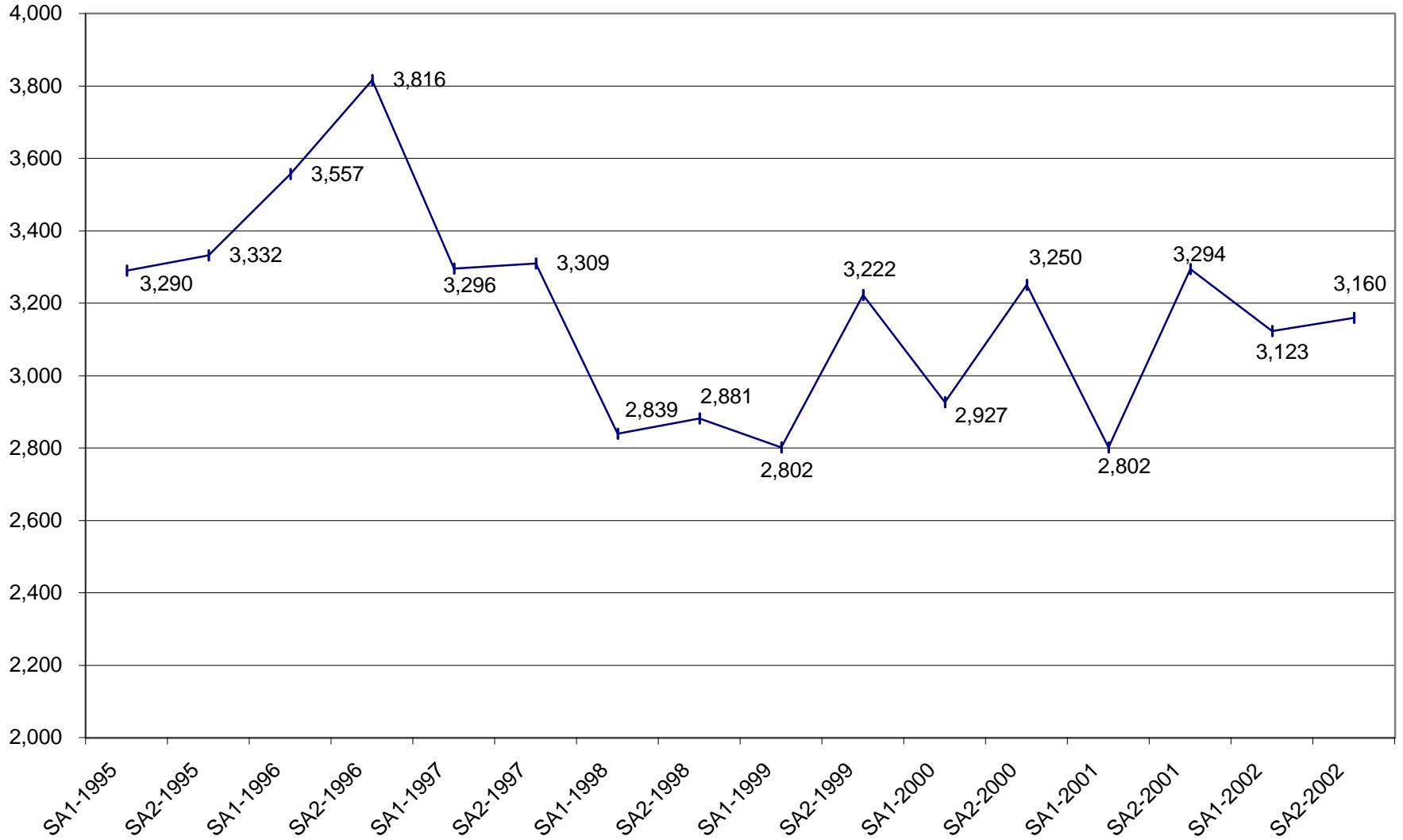
SEMI-ANNUAL ROBBERY COMPARISON IN TAMPA



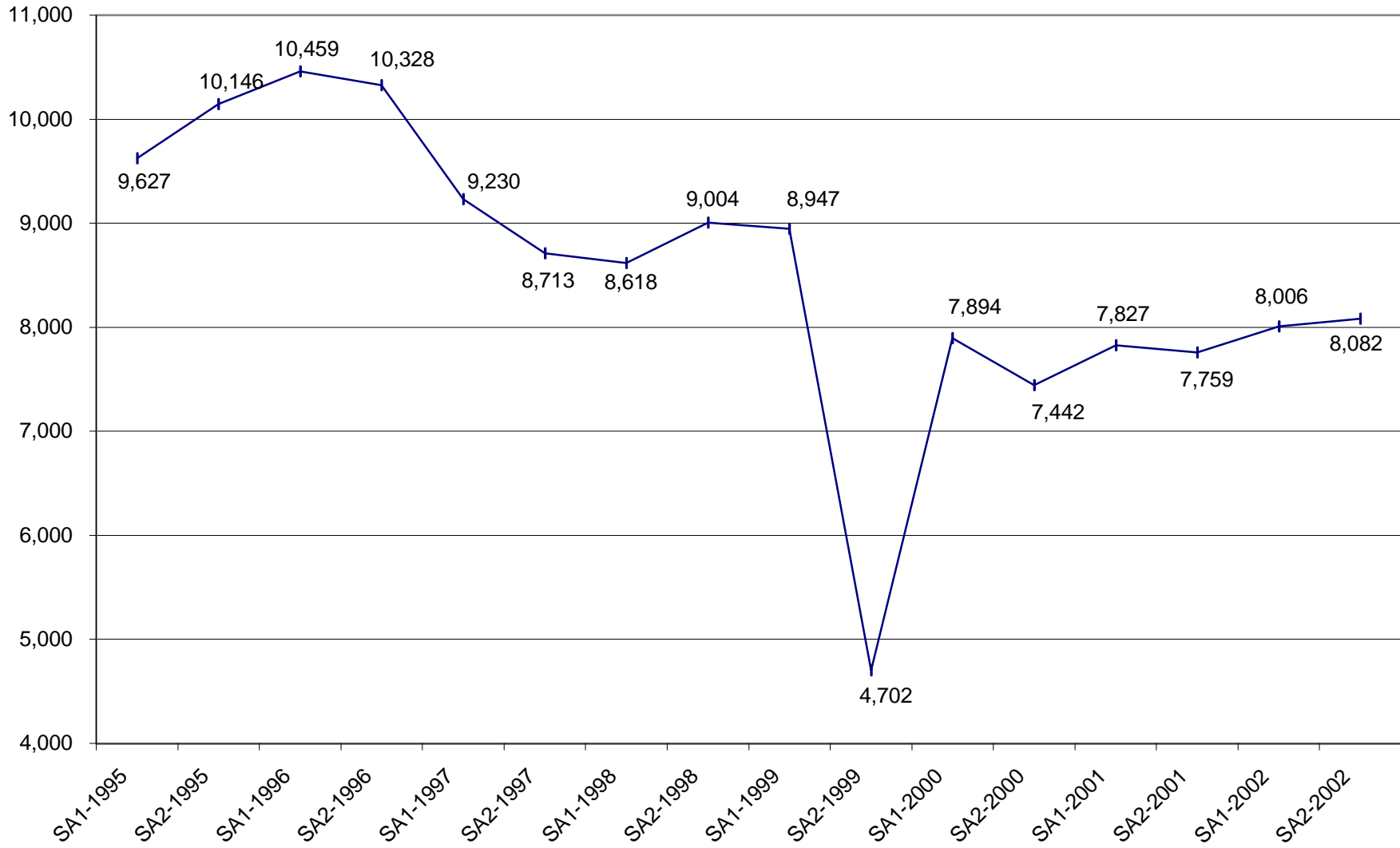
SEMI-ANNUAL AGGRAVATED ASSAULT COMPARISON IN TAMPA



SEMI-ANNUAL BURGLARY COMPARISON IN TAMPA



SEMI-ANNUAL LARCENY COMPARISON IN TAMPA



SEMI-ANNUAL VEHICLE THEFT COMPARISON IN TAMPA

