

City of Tampa Transportation Impact Fee Update Study



Tindale-Oliver
&
Associates, Inc.
Planning and Engineering

City Council Presentation
September 24, 2009



Overview



- Background
- Population and Employment Growth
- Technical Study Results
- Projects Needs



Background

Previous TIF Studies

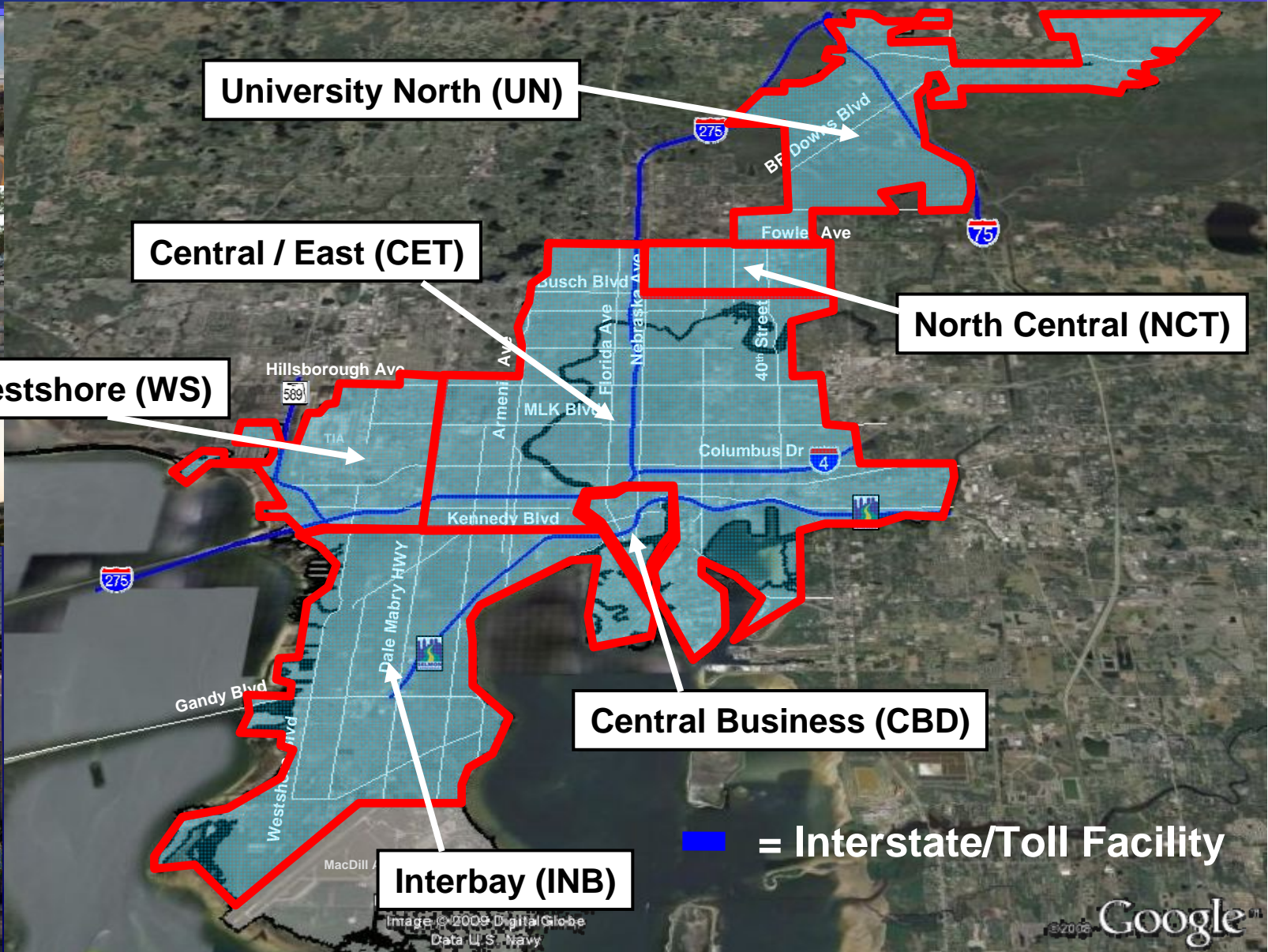


- Adopted in 1986
 - Established six impact fee districts
 - Single fee for all districts
- Updated in 1989
 - Varied fee by district
 - Cost variation by district
 - Trip Length variation by district
 - Interstate Travel Credit variation by district



Background

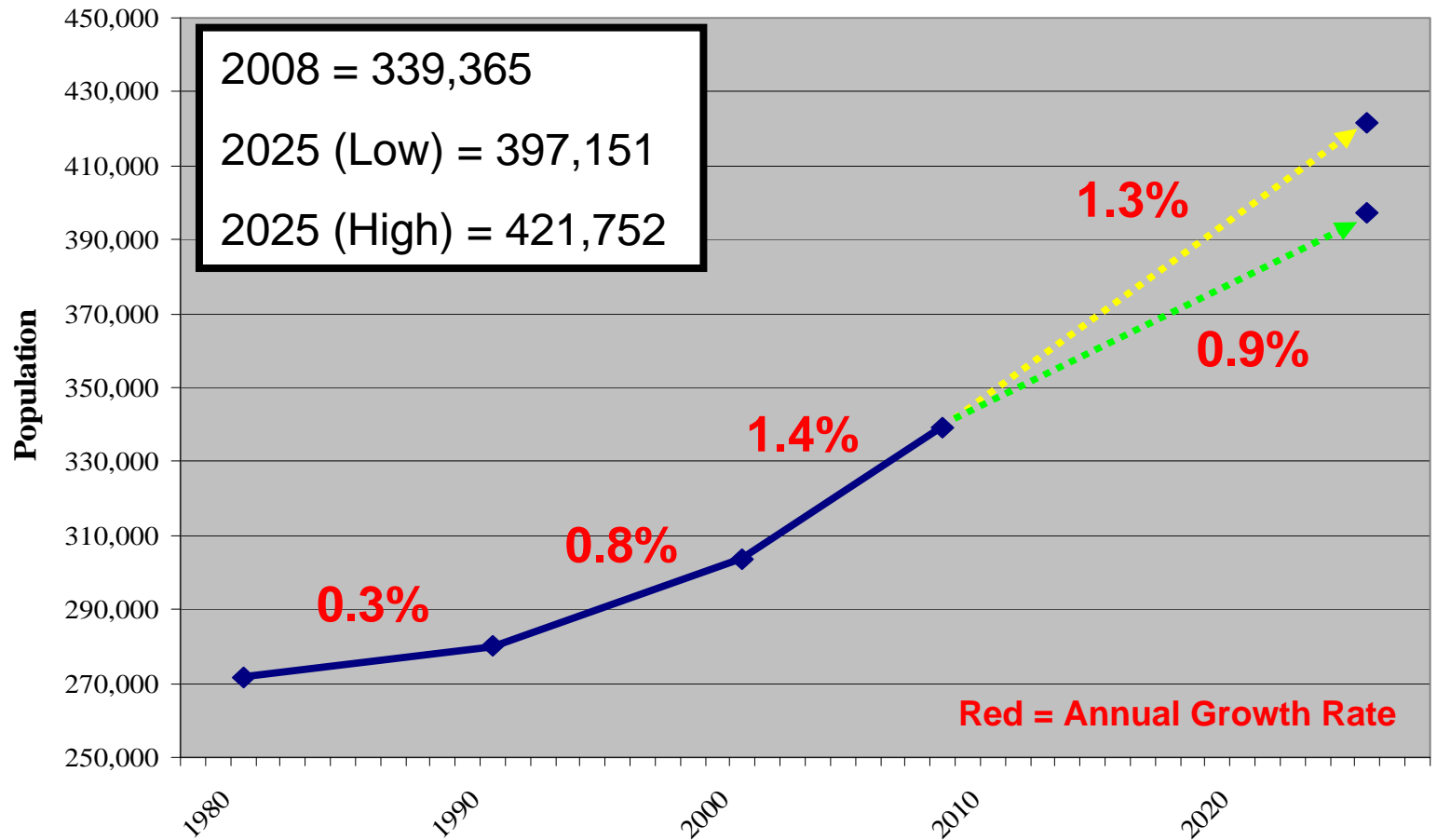
Impact Fee Districts





Population and Employment Growth

Total Population Growth



2008 = BEBR Estimate

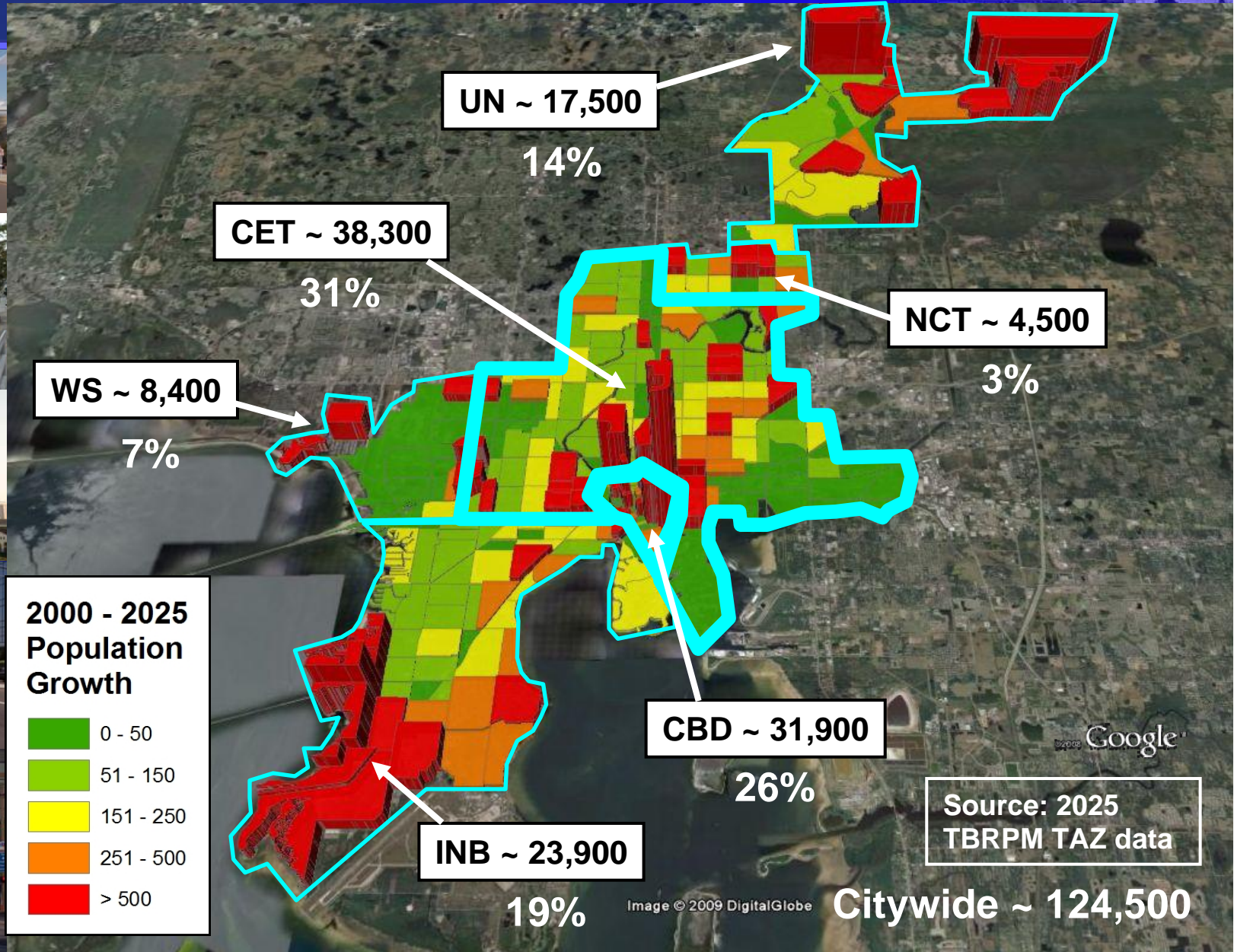
2025 (Low) = TOA projection based on historical growth rates, the economic downturn and discussions with Alan Baker

2025 (High) = Projection based on 2025 TBRPM TAZ population data



Population and Employment Growth

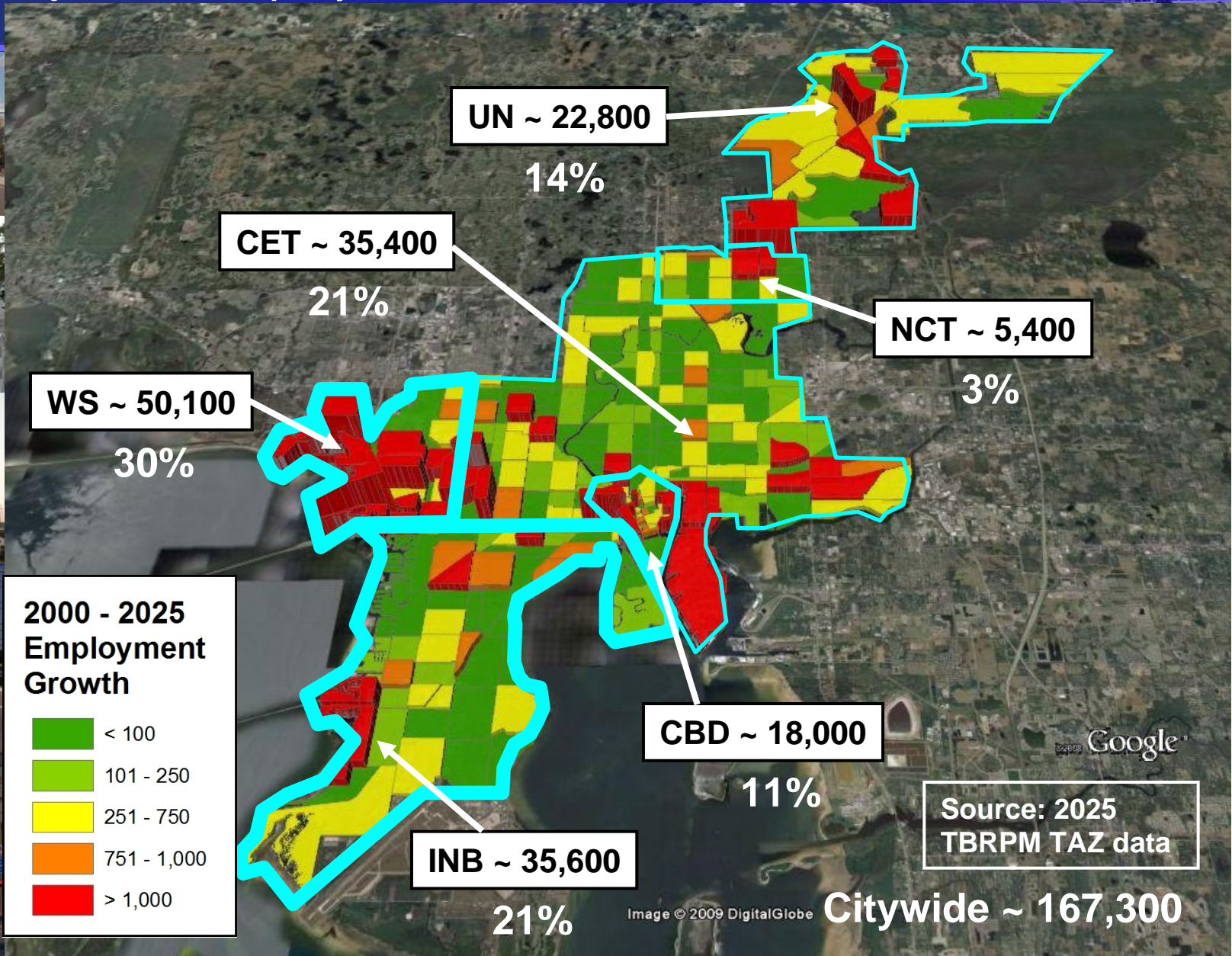
Projected Population Increase (at 1.3%) from 2000-2025





Population and Employment Growth

Projected Employment Increase from 2000-2025





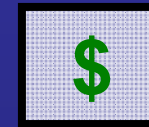
Technical Study Results

Impact Fee Options



1) Current Fee

Cost



Interstate



2) Calculated Fee



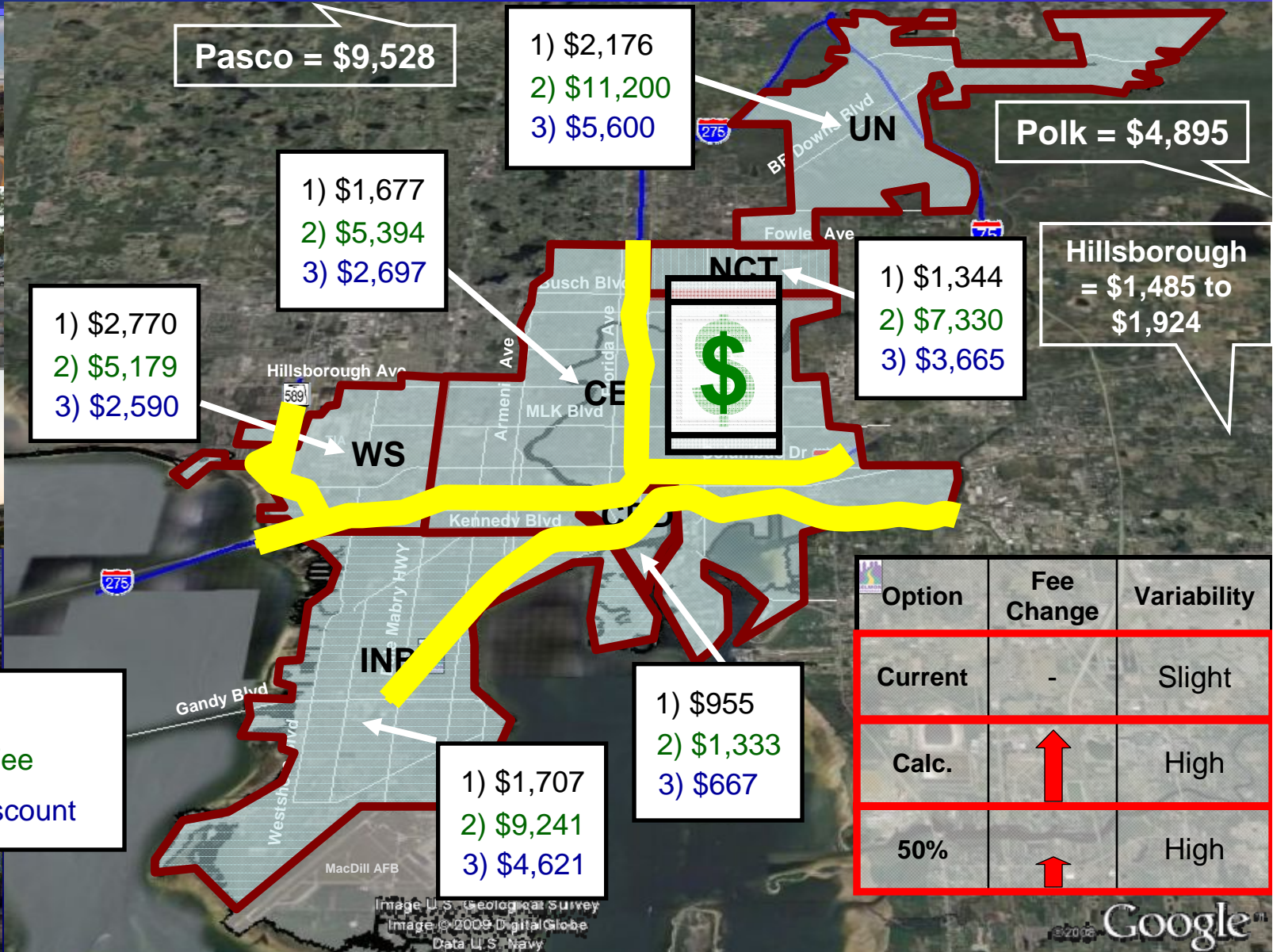
3) Calculated Fee,
50% Discount





Technical Study Results

Single Family Residential – Fee Rates



Pasco = \$9,528

1) \$2,176
 2) \$11,200
 3) \$5,600

Polk = \$4,895

1) \$1,677
 2) \$5,394
 3) \$2,697

1) \$2,770
 2) \$5,179
 3) \$2,590

1) \$1,344
 2) \$7,330
 3) \$3,665

Hillsborough = \$1,485 to \$1,924



1) \$955
 2) \$1,333
 3) \$667

1) \$1,707
 2) \$9,241
 3) \$4,621

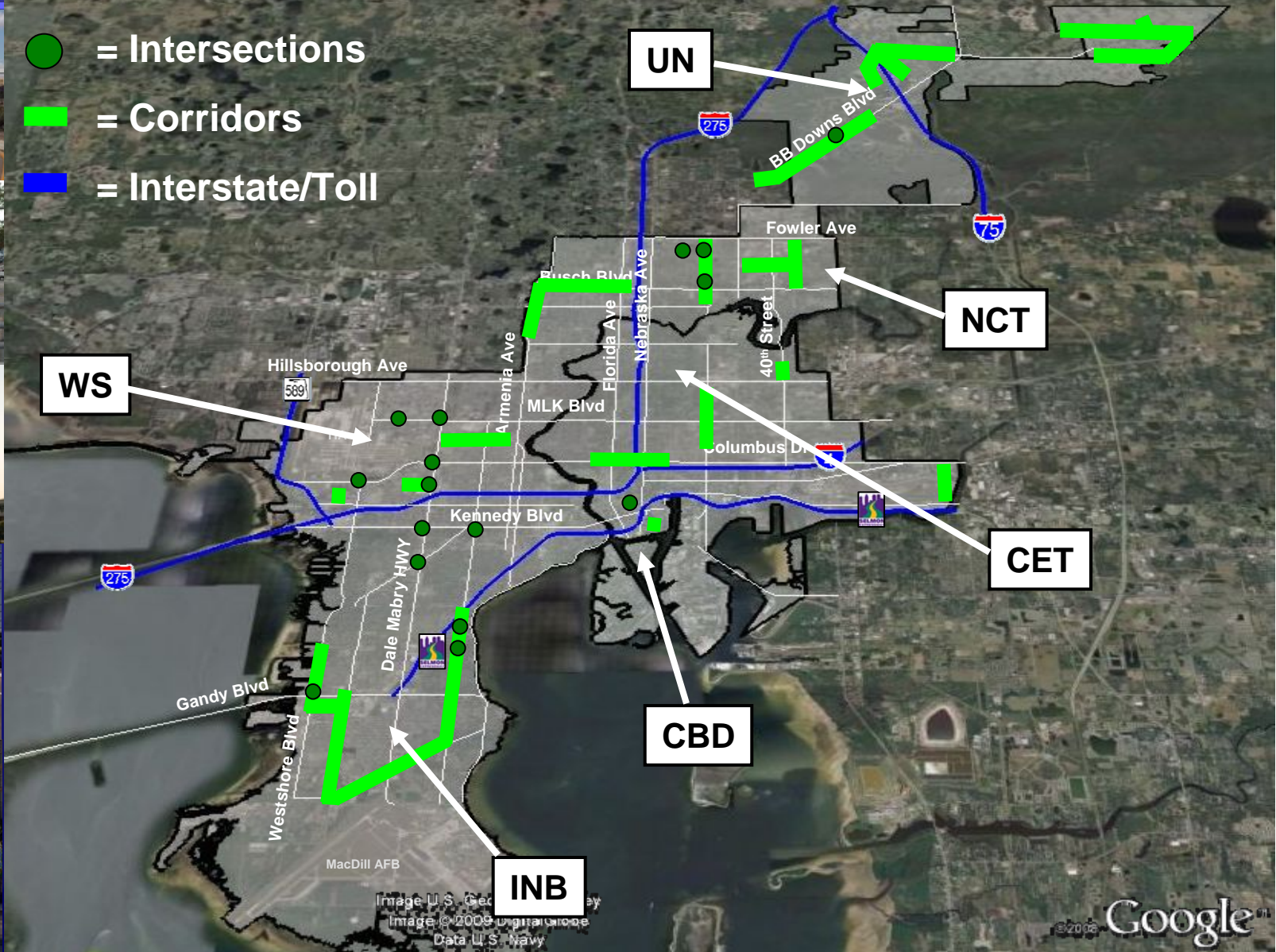
Option	Fee Change	Variability
Current	-	Slight
Calc.	↑	High
50%	↑	High

Image U.S. Geological Survey
 Image © 2009 DigitalGlobe
 Data U.S. Navy



Roadway Improvement Projects: Project Needs (2025)

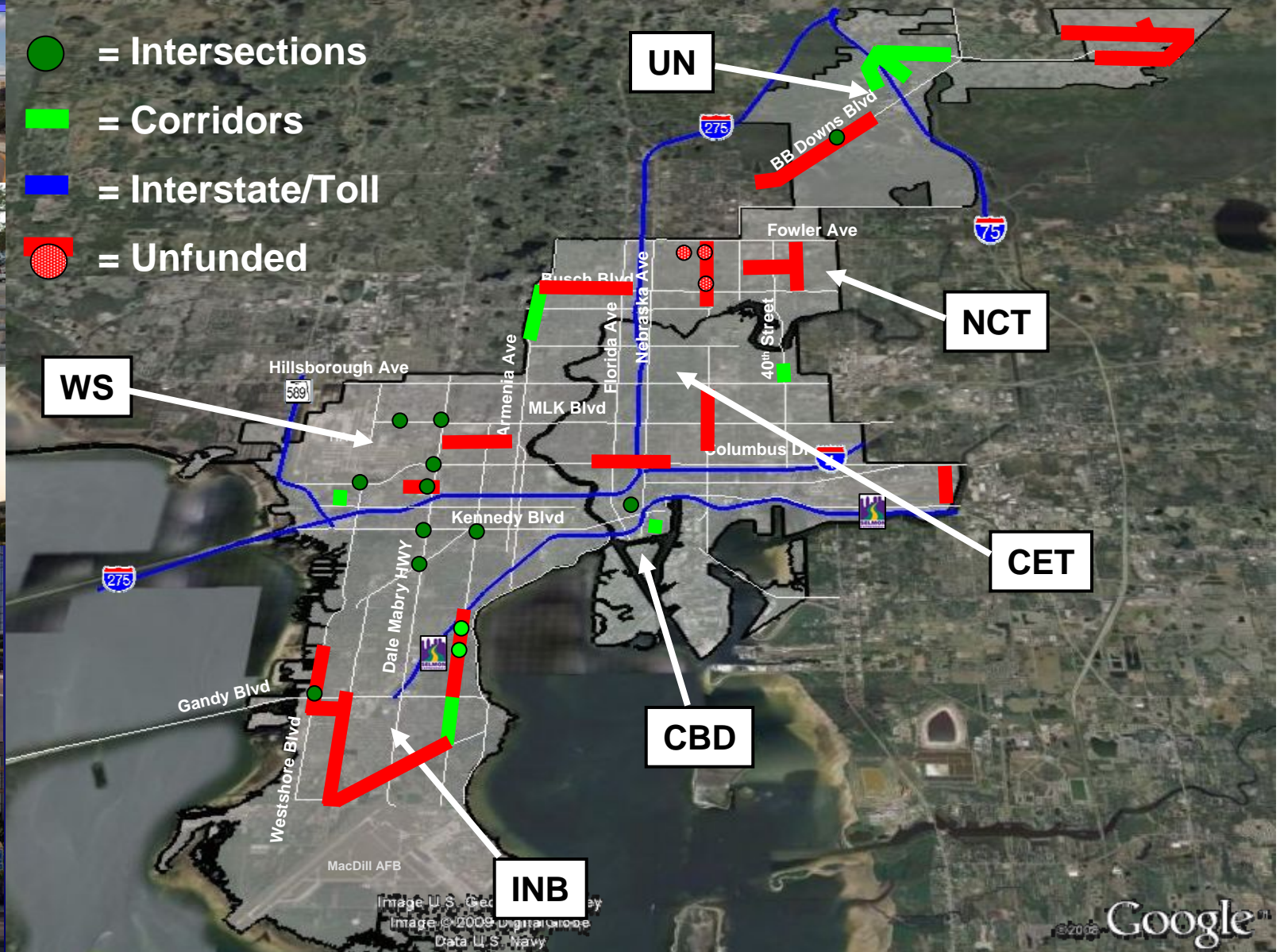
- = Intersections
- = Corridors
- = Interstate/Toll





Roadway Improvement Projects: Existing Fee (2009-2025)

- = Intersections
- = Corridors
- = Interstate/Toll
- = Unfunded

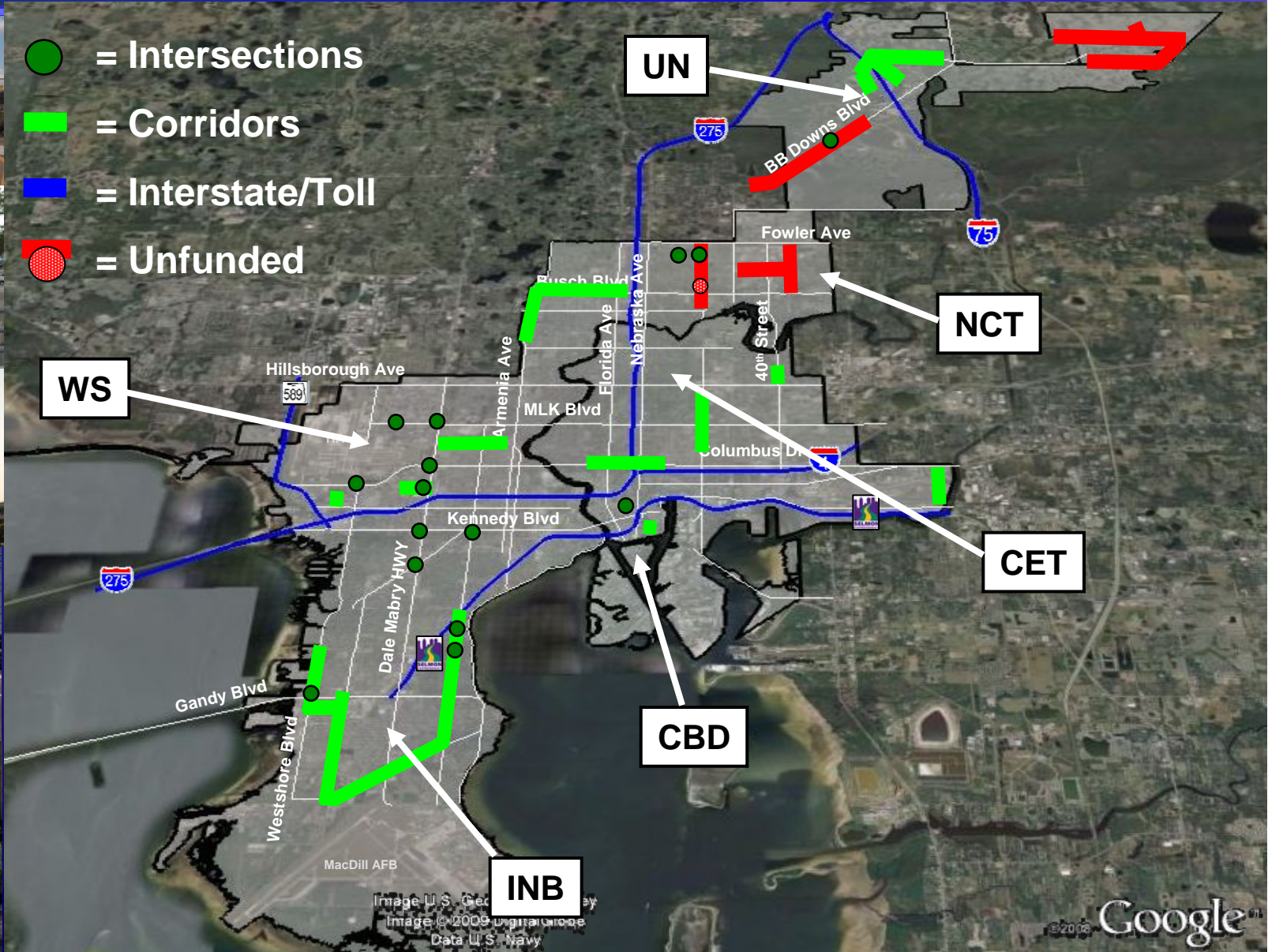




Roadway Improvement Projects: Calculated Fee (2009-2025)



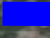



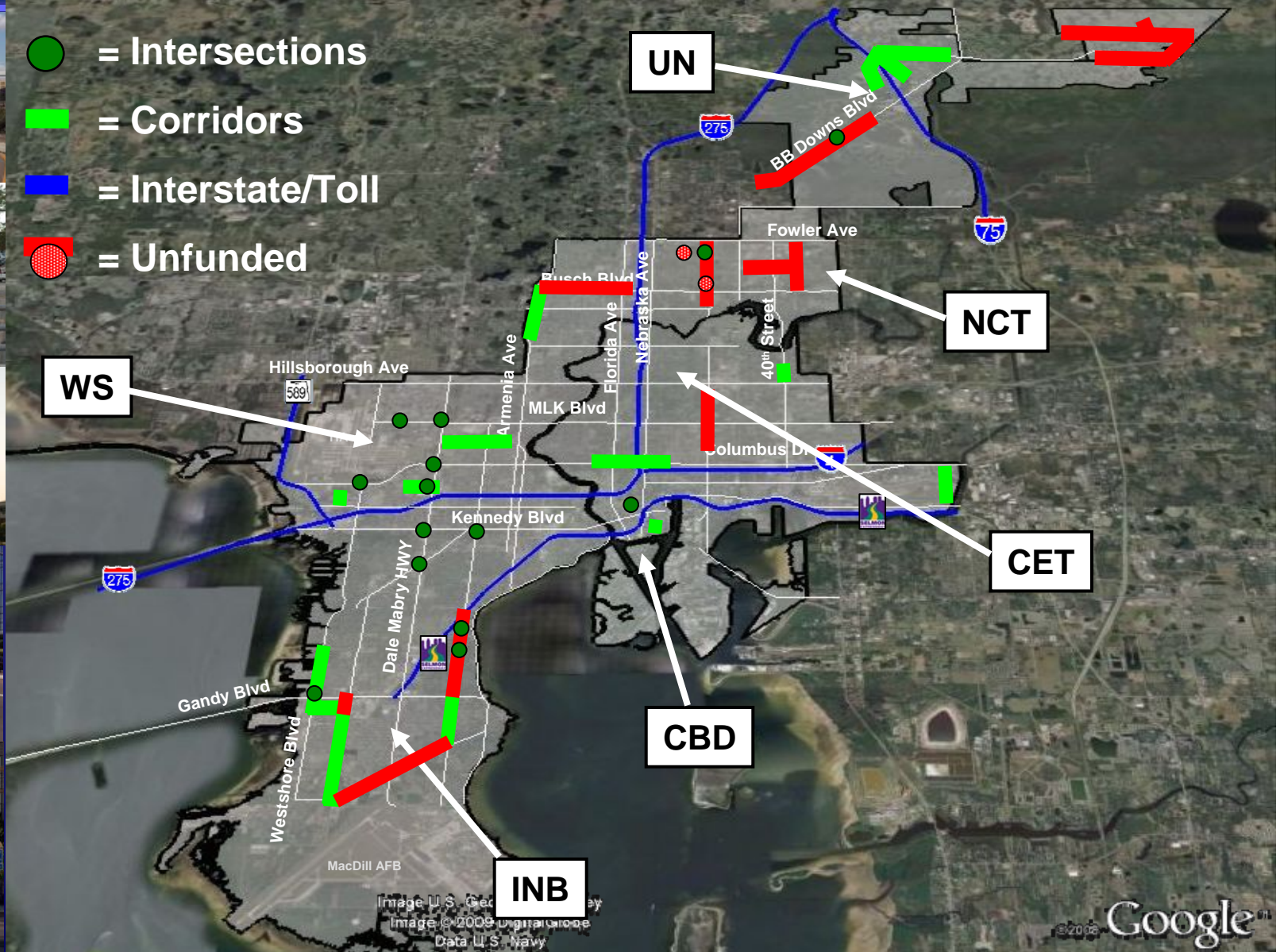
- = Intersections
- = Corridors
- = Interstate/Toll
- = Unfunded





Roadway Improvement Projects: Calculated Fee, 50% Discount (2009-2025)

-  = Intersections
-  = Corridors
-  = Interstate/Toll
-  = Unfunded





Study Uses



- TCEA
- Comprehensive Plan / Capital Element
- Senate Bill 360 Mobility Plan
- Future Mobility/Impact Fee Study



THE END