



CITY OF TAMPA

Bob Buckhorn, Mayor

CONTRACT ADMINISTRATION DEPARTMENT

David L. Vaughn, AIA, Director

ADDENDUM NO. 3

DATE: April 8, 2015

Contract 14-C-00025; Howard F. Curren AWTP Junction Chamber No. 1 Conduit Repairs

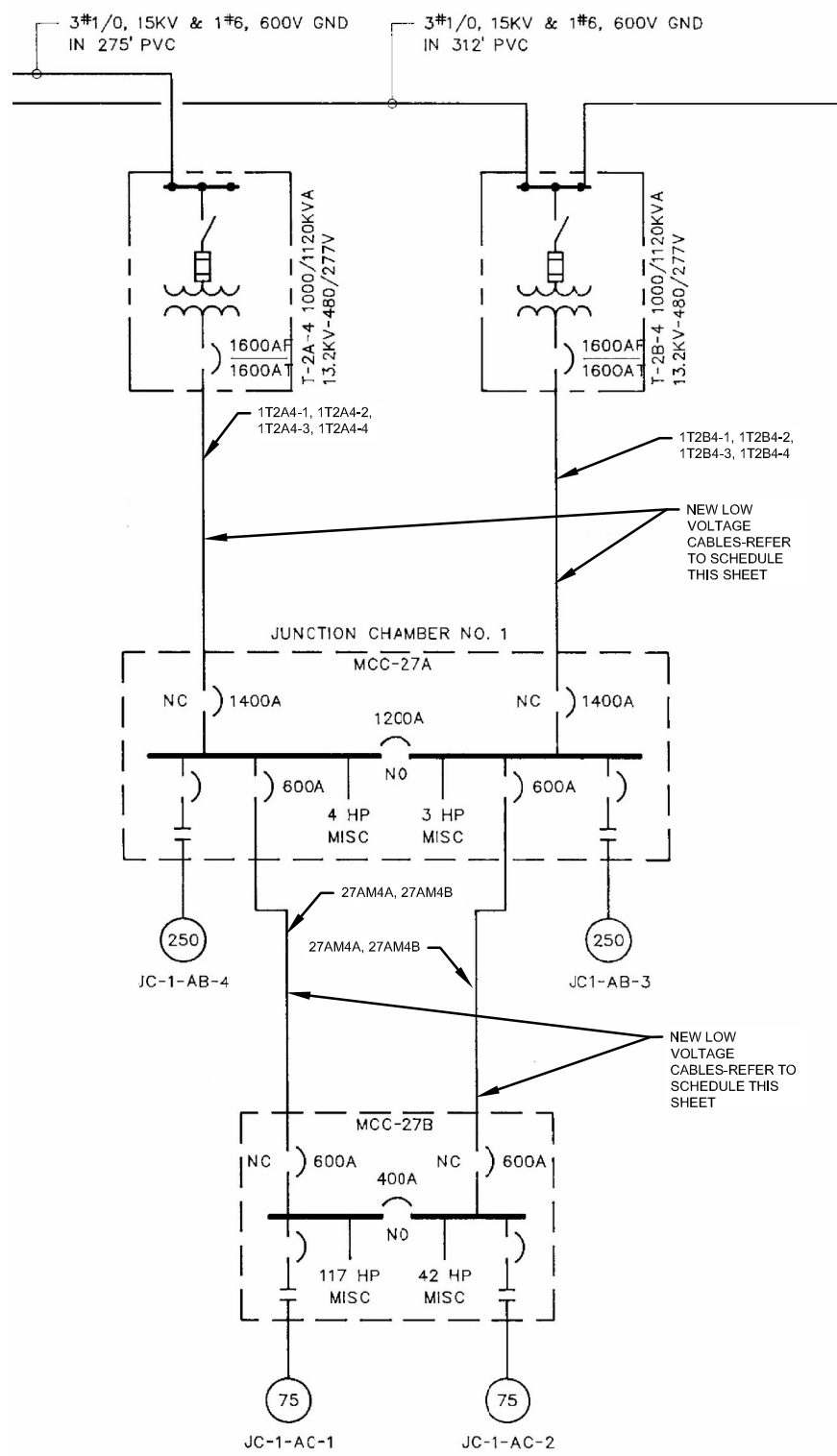
Bidders on the above referenced project are hereby notified that the following addendum is made to the Contract Documents. BIDS TO BE SUBMITTED SHALL CONFORM TO THIS NOTICE.

- Item 1: Replace Sheets D-03 Demolition Details II, and E-03 Electrical One-Line Diagram with the attached revised Sheets D-03 and E-03.
- Item 2: Add attached Sheet BE7 Junction Chamber No.1 Expansion Electrical Lighting Plan for reference.
- Item 3: Demolition and Electrical One-Line Diagram clarification: Sheets D-03 Demolition Details II, E-03 One-Line Diagram and supplemental drawing BE7 Junction Chamber No.1 Expansion Electrical Lighting Plan: The conductors in the 2" conduit are not for CT metering equipment, but for 2-20A/1P circuits #19 and #21, feeding light fixtures and receptacles in the transformer yard; the circuits originate at Panel LP-27Aas shown on Sheet BE7.
- Item 4: Video Scoping Clarification: Video scoping shall be recorded. The 2-inch conduits are exempted from the video scoping requirements.
- Item 5: Components and Fittings of the Outdoor Conduit System Clarification: All components and fittings, including Meyer hubs, of the outdoor conduit system shall be PVC coated aluminum unless no supplier offers the product.

All other provisions of the Contract Documents and Specifications not in conflict with this Addendum shall remain in full force and effect. Questions are to be e-mailed to ContractAdministration@tampagov.net.

Jim Greiner

Jim Greiner, P.E., Contract Management Supervisor



MODIFIED ONE-LINE DIAGRAM
NOT TO SCALE

NEW LOW VOLTAGE CABLE REPLACEMENT SCHEDULE				
CONDUIT NO.	NO. OF CONDUCTORS	APPROX. LENGTH(ft)	FROM	TO
IT2A4-1	3-500 KCMIL & 1-2/0 GND	150	TRANSFORMER T-2A-4	MCC-27A(SIDE A)
IT2A4-2	3-500 KCMIL & 1-2/0 GND	150	TRANSFORMER T-2A-4	MCC-27A(SIDE A)
IT2A4-3	3-500 KCMIL & 1-2/0 GND	150	TRANSFORMER T-2A-4	MCC-27A(SIDE A)
IT2A4-4	3-500 KCMIL & 1-2/0 GND	170	TRANSFORMER T-2A-4	MCC-27A(SIDE A)
IT2B4-1	3-500 KCMIL & 1-2/0 GND	170	TRANSFORMER T-2B-4	MCC-27A(SIDE B)
IT2B4-1	3-500 KCMIL & 1-2/0 GND	170	TRANSFORMER T-2B-4	MCC-27A(SIDE B)
IT2B4-1	3-500 KCMIL & 1-2/0 GND	170	TRANSFORMER T-2B-4	MCC-27A(SIDE B)
IT2B4-1	3-500 KCMIL & 1-2/0 GND	170	TRANSFORMER T-2B-4	MCC-27A(SIDE B)
27AM4A	3-350 KCMIL & 1-1/0 GND	180	MCC-27A(SIDE A)	MCC-27B
27AM4B	3-350 KCMIL & 1-1/0 GND	180	MCC-27A(SIDE A)	MCC-27B
27AM9A	3-350 KCMIL & 1-1/0 GND	200	MCC-27A(SIDE B)	MCC-27B
27AM9B	3-350 KCMIL & 1-1/0 GND	200	MCC-27A(SIDE B)	MCC-27B
CIRCUITS #19 & #21	REPLACE IN-KIND*	350	LP-27A (REFERENCE SUPPLEMENTAL RECORD DRAWING BE7 FOR LOCATION)	TRANSFORMER YARD

1
1

* Size and amount of existing conductors are unknown; therefore, the Contractor shall remove and replace existing conductors with like size and amount.

NO.	DATE	REVISIONS
1	04-02-2015	ADDENDUM 1

DESIGNED BY: K. ITSCHNER
DRAWN BY: K. ITSCHNER
CHECKED BY: W. HUGHES
DATE: 07/24/2014
FILE NAME: 260603-E-03.dwg

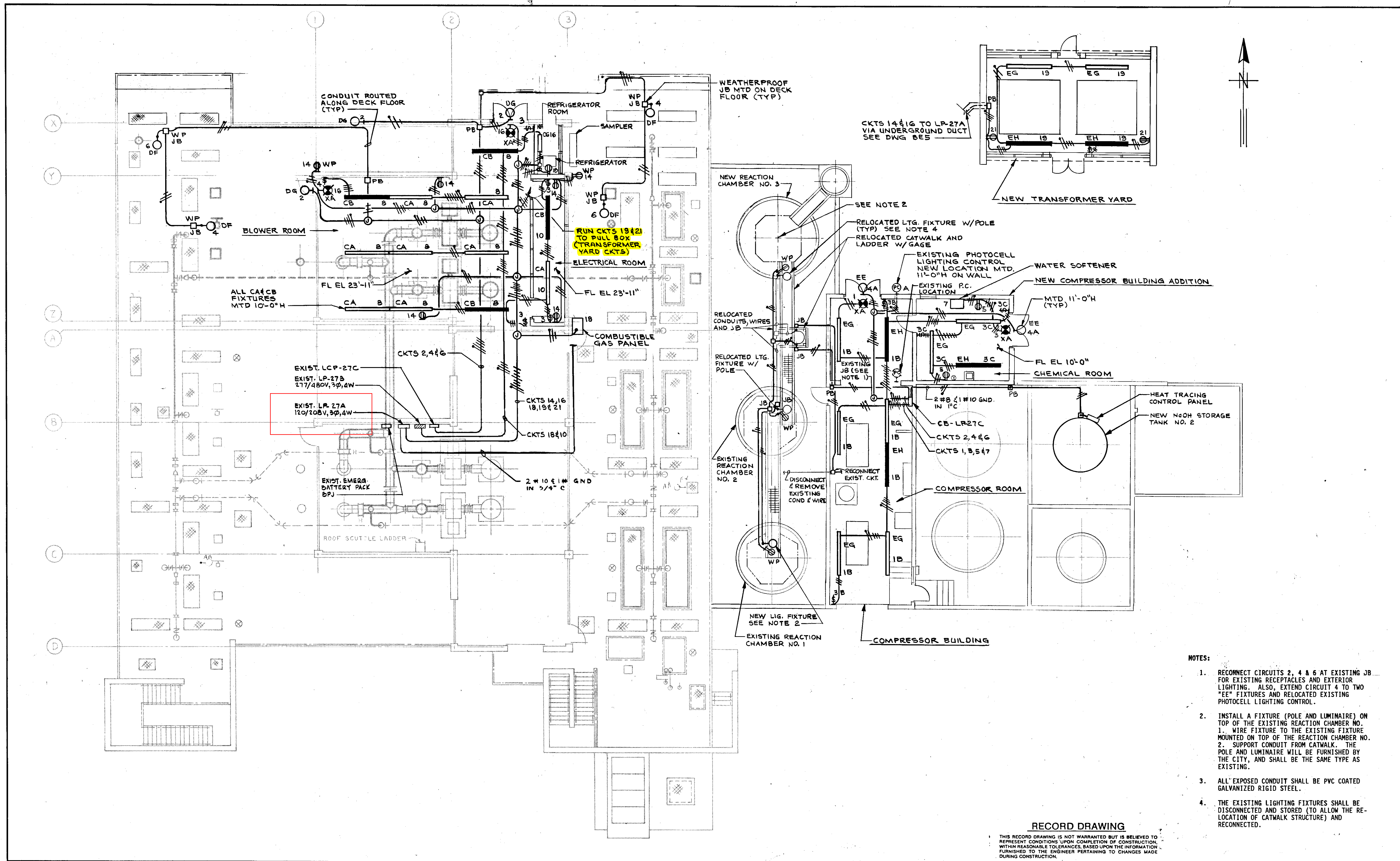
ISSUE CERTIFICATION
FL ENG. LICENSE NO. RICHARD R. CREAVALLE, P.E., 59855

CITY of TAMPA
HOWARD F. CURREN
ADVANCED WASTEWATER TREATMENT PLANT

HOWARD F. CURREN AWTP
JUNCTION CHAMBER No. 1
CONDUIT REPAIRS

ELECTRICAL
ONE-LINE DIAGRAM

W.O. SHEET
E-03



CKTS 14 & 16 TO LP-27A VIA UNDERGROUND DUCT SEE DWG BES

RUN CKTS 18 & 21 TO PULL BOX (TRANSFORMER YARD CKTS)

EXIST. LP-27A 120/208V, 3Ø, 4W

- NOTES:
1. RECONNECT CIRCUITS 2, 4 & 6 AT EXISTING JB FOR EXISTING RECEPTACLES AND EXTERIOR LIGHTING. ALSO, EXTEND CIRCUIT 4 TO TWO "EE" FIXTURES AND RELOCATED EXISTING PHOTOCELL LIGHTING CONTROL.
 2. INSTALL A FIXTURE (POLE AND LUMINAIRE) ON TOP OF THE EXISTING REACTION CHAMBER NO. 1. WIRE FIXTURE TO THE EXISTING FIXTURE MOUNTED ON TOP OF THE REACTION CHAMBER NO. 2. SUPPORT CONDUIT FROM CATWALK. THE POLE AND LUMINAIRE WILL BE FURNISHED BY THE CITY, AND SHALL BE THE SAME TYPE AS EXISTING.
 3. ALL EXPOSED CONDUIT SHALL BE PVC COATED GALVANIZED RIGID STEEL.
 4. THE EXISTING LIGHTING FIXTURES SHALL BE DISCONNECTED AND STORED (TO ALLOW THE RELOCATION OF CATWALK STRUCTURE) AND RECONNECTED.

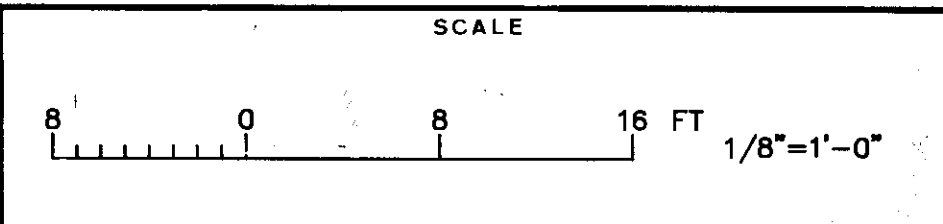
RECORD DRAWING

THIS RECORD DRAWING IS NOT WARRANTED BUT IS BELIEVED TO REPRESENT CONDITIONS UPON COMPLETION OF CONSTRUCTION, WITHIN REASONABLE TOLERANCES, BASED UPON THE INFORMATION FURNISHED TO THE ENGINEER PERTAINING TO CHANGES MADE DURING CONSTRUCTION.

GREELEY AND HANSEN ENGINEERS
4350 WEST CYPRESS STREET
TAMPA, FLORIDA 33607-4135

DESIGNED LPF
DRAWN PN
CHECKED SSH

APPROVED	DATE		
2	7/27/91	REC DWG	REVISION



CITY OF TAMPA, FLORIDA
HOOKERS POINT WASTEWATER TREATMENT PLANT EXPANSION
PHASE I DIVISION 5H3A
PREAERATION AND FILTRATE PUMPING EQUIPMENT

JUNCTION CHAMBER NO. 1 EXPANSION
ELECTRICAL
LIGHTING PLAN

PROJ NO. 2026
DWG BE7
SHEET 62 OF 64
DATE AUGUST 1991 REV 2