



CITY OF TAMPA

Bob Buckhorn, Mayor

CONTRACT ADMINISTRATION DEPARTMENT

David L. Vaughn, AIA, Director

ADDENDUM NO. 1

DATE: December 3, 2013

Contract 14-C-00017; Cole Community Lake Lighting Improvements – Sheltered Market

Bidders on the above referenced project are hereby notified that the following addendum is made to the Contract Documents. BIDS TO BE SUBMITTED SHALL CONFORM TO THIS NOTICE.

Item 1: Replace the Cover, Sheets E.1 and E.2 dated 10-31-13 with the attached Cover, Sheets E.1 and E.2 dated 11-12-13.

Item 2: Attached for reference is the pre-bid meeting sign-in sheet.

All other provisions of the Contract Documents and Specifications not in conflict with this Addendum shall remain in full force and effect. Questions are to be e-mailed to ContractAdministration@tampagov.net.


Jim Greiner

Jim Greiner, P.E., Contract Management Supervisor

RHCA

ROBINSON, HORNER, CILIBERTO
RHC AND ASSOCIATES, INC.

P.O. BOX 4505
TAMPA, FLA. 33677
TEL. (813) 254-0907
FAX. (813) 254-0744

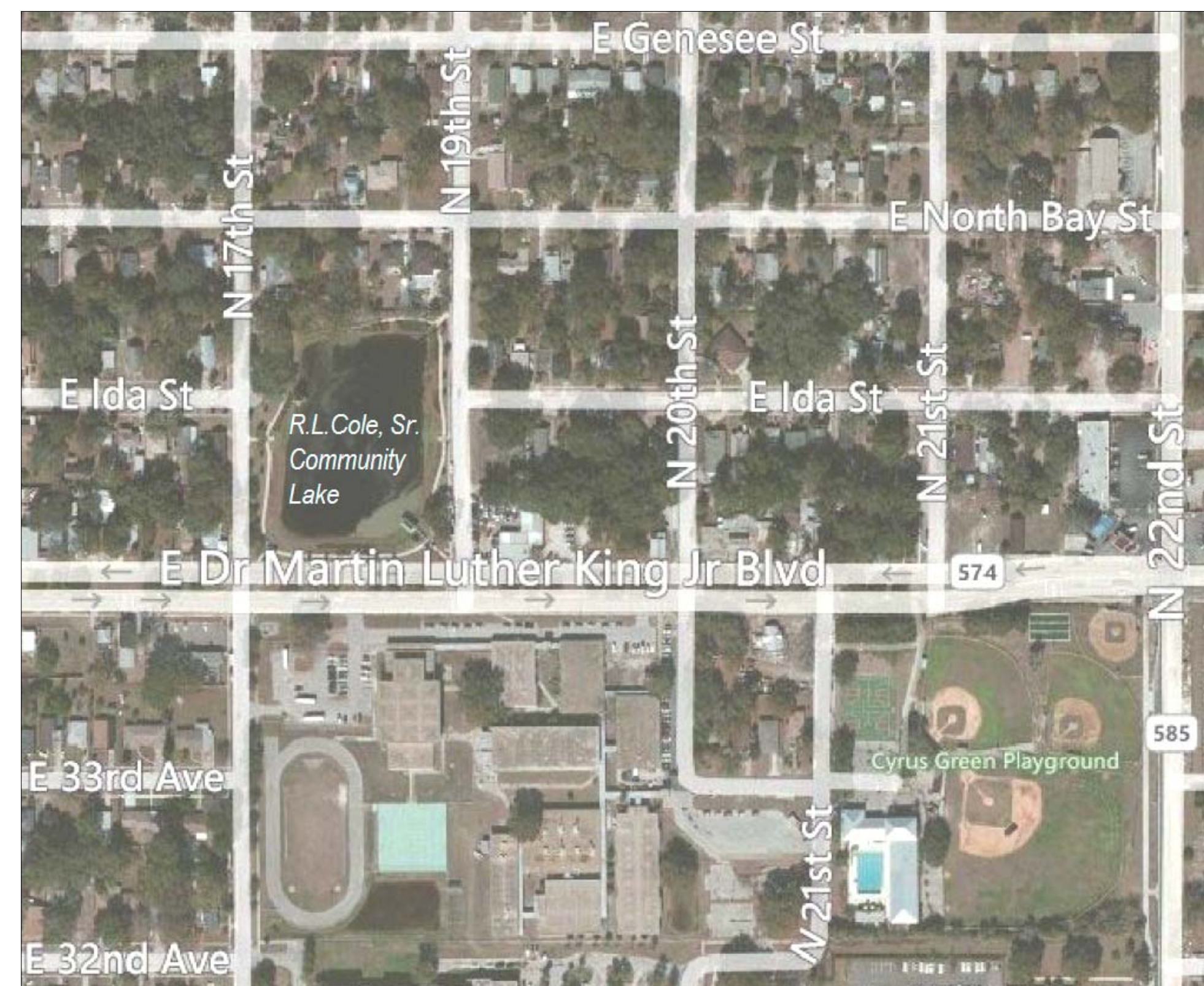


**EAST TAMPA COMMUNITY
REDEVELOPMENT AGENCY**

SHEET INDEX	
	COVER PAGE
E-1	WALKWAY LIGHTING LUMINAIRE SITE PLAN
E-2	WALKWAY LIGHTING ELECTRICAL SITE PLAN
-	
-	
-	



CITY OF TAMPA
BOB BUCKHORN - MAYOR



PARKS AND RECREATION DEPT.
PEG BORS, LANDSCAPE ARCHITECT III

PEDESTRIAN WALKWAY LIGHTING PROJECT

DEPT. PROJECT NO.: TFVC11

RHCA PROJECT NO.: CE-049

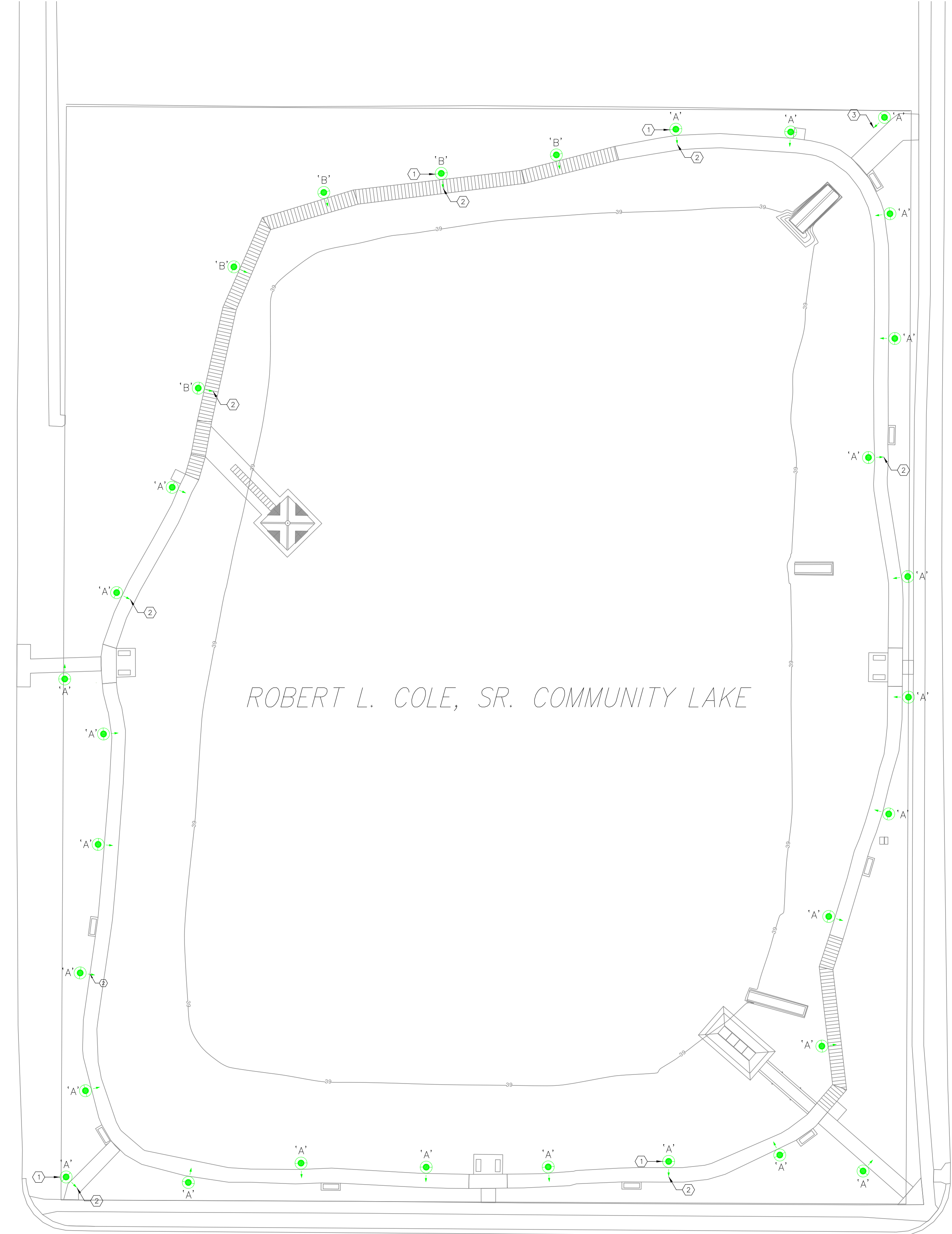
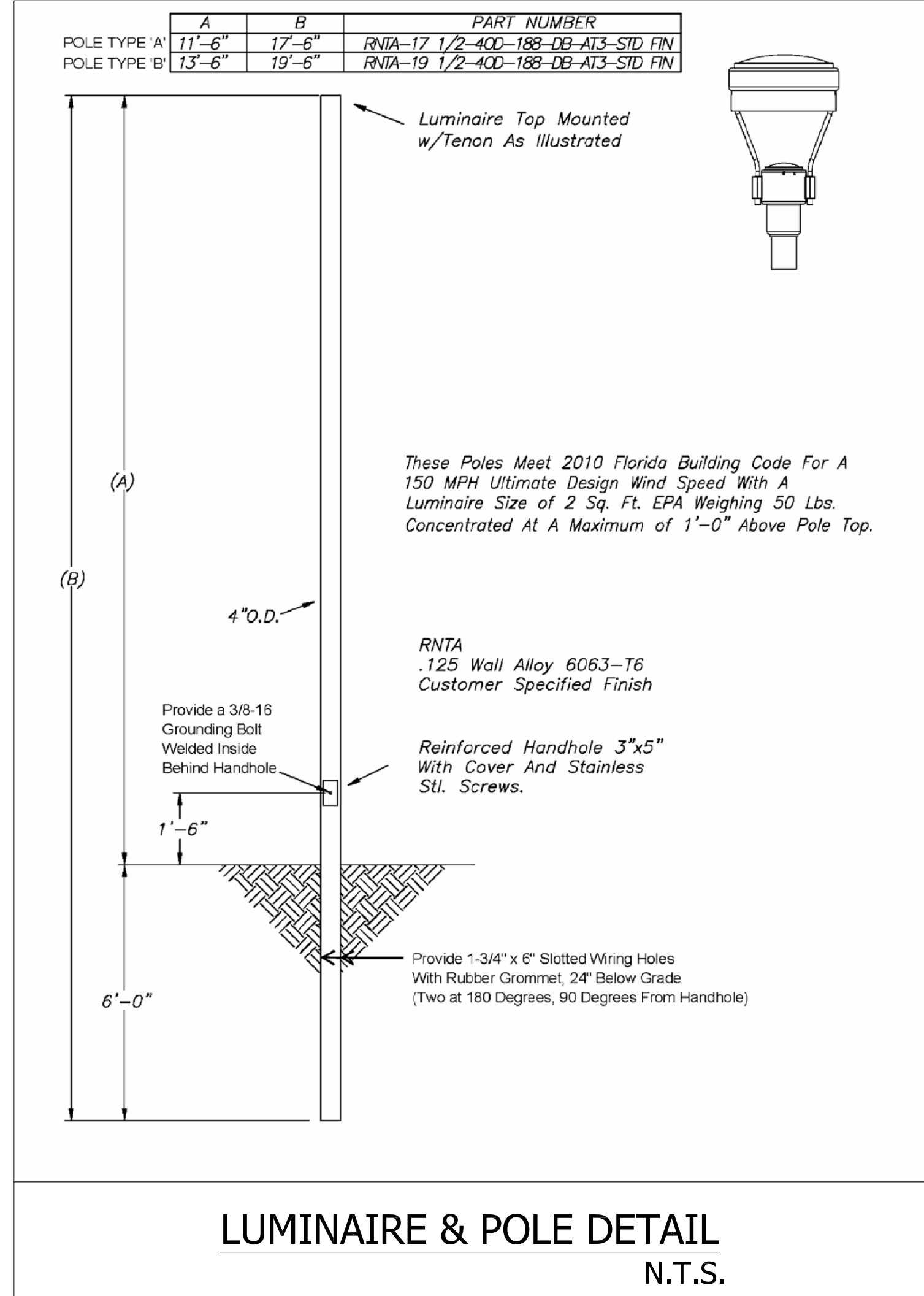
FOR:

ROBERT L. COLE, SR. COMMUNITY LAKE

1798 E. DR. MARTIN LUTHER KING, JR. BLVD.
TAMPA, FLORIDA 33610

November 12, 2013

PHASE 1 - TASK 4 - 100% FINAL DESIGN



WALKWAY LIGHTING LUMINAIRE & POLE SCHEDULE						
TYPE	MANUFACTURER	CATALOG NUMBER	LAMP(S)	VOLT	MOUNTING	REMARKS
A	VISIONAIRE LIGHTING (ARIA SIZE 1 LED) (LUMINAIRE)	ARI-1-L-T2-42LC-350-4K-UNV-PT-BK-DF-PB-10KV	42 350MA LED-4000°K	240	POST-TOP	20" DIAMETER, TWIN BAR, CAST ALUMINUM LED LUMINAIRE WITH BLACK POWDER COAT FINISH TO MATCH THE POLE
	VISIONAIRE LIGHTING (POLE)	RNTA-17-1/2-400-188-DB-AT3-STD FIN; BLACK POWDER COAT FINISH (17'-6" O.H.)	---	---	DIRECT-BURIAL WITH EMBEDMENT FOR 14" M.H.	ROUND, STRAIGHT ALUMINUM POLE WITH SLOTTED WIRING HOLES, GROUNDING LUG AND HANDHOLE (REFER TO DETAIL)
B	VISIONAIRE LIGHTING (ARIA SIZE 1 LED) (LUMINAIRE)	ARI-1-L-T2-42LC-350-4K-UNV-PT-BK-DF-PB-10KV	42 350MA LED-4000°K	240	POST-TOP	SAME AS TYPE "A" EXCEPT ON LONGER POLE FOR LOWER GRADE AT LAKE BANK BELOW BOARDWALK AT NORTH END
	VISIONAIRE LIGHTING (POLE)	RNTA-19-1/2-400-188-DB-AT3-STD FIN; BLACK POWDER COAT FINISH (19'-6" O.H.)	---	---	DIRECT-BURIAL WITH EMBEDMENT FOR 14" M.H.	ROUND, STRAIGHT ALUMINUM POLE WITH SLOTTED WIRING HOLES, GROUNDING LUG AND HANDHOLE (REFER TO DETAIL)

- LIGHTING PLAN NOTES:**
- LUMINAIRE POLE LOCATION SHALL BE APPROXIMATELY 30" FROM THE CENTER OF THE POLE TO THE EDGE OF THE ADJACENT WALKWAY. THIS SHALL BE TYPICAL FOR ALL LUMINAIRES.
 - LUMINAIRE AIMING/ORIENTATION SHALL BE, AS IMPLIED BY ARROW, PERPENDICULAR TO THE ADJACENT WALKWAY UNLESS OTHERWISE NOTED. HANDHOLE SHALL FACE THE PATHWAY FOR TYPE "A" POLE AND HANDHOLE SHALL FACE AWAY FROM THE BOARDWALK FOR TYPE "B" POLE.
 - LUMINAIRE AIMING/ORIENTATION SHALL BE, AS IMPLIED BY ARROW, PARALLEL TO THE ADJACENT WALKWAY. HANDHOLE SHALL FACE THE PATHWAY.



RHCA CONSULTING ENGINEERS
ROBINSON, HORNER, CILIBERTO
RHC AND ASSOCIATES, INC.
P.O. BOX 4505
TAMPA, FLA. 33677
FLPE CA-5888

CITY OF TAMPA - EAST TAMPA COMMUNITY REDEVELOPMENT AGENCY
PARKS AND RECREATION DEPT.
PEDESTRIAN WALKWAY LIGHTING PROJECT

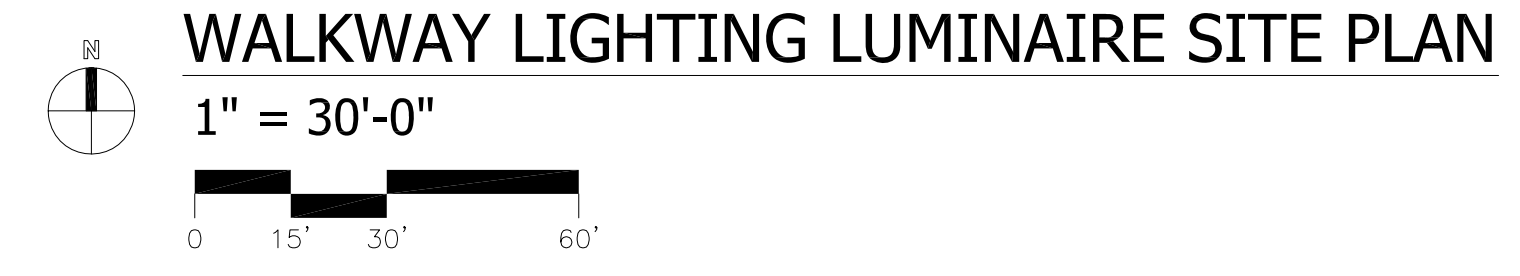
FOR:
ROBERT L. COLE, Sr. COMMUNITY LAKE
1798 E. DR. MARTIN LUTHER KING, Jr., BLVD.
TAMPA, FLORIDA 33610

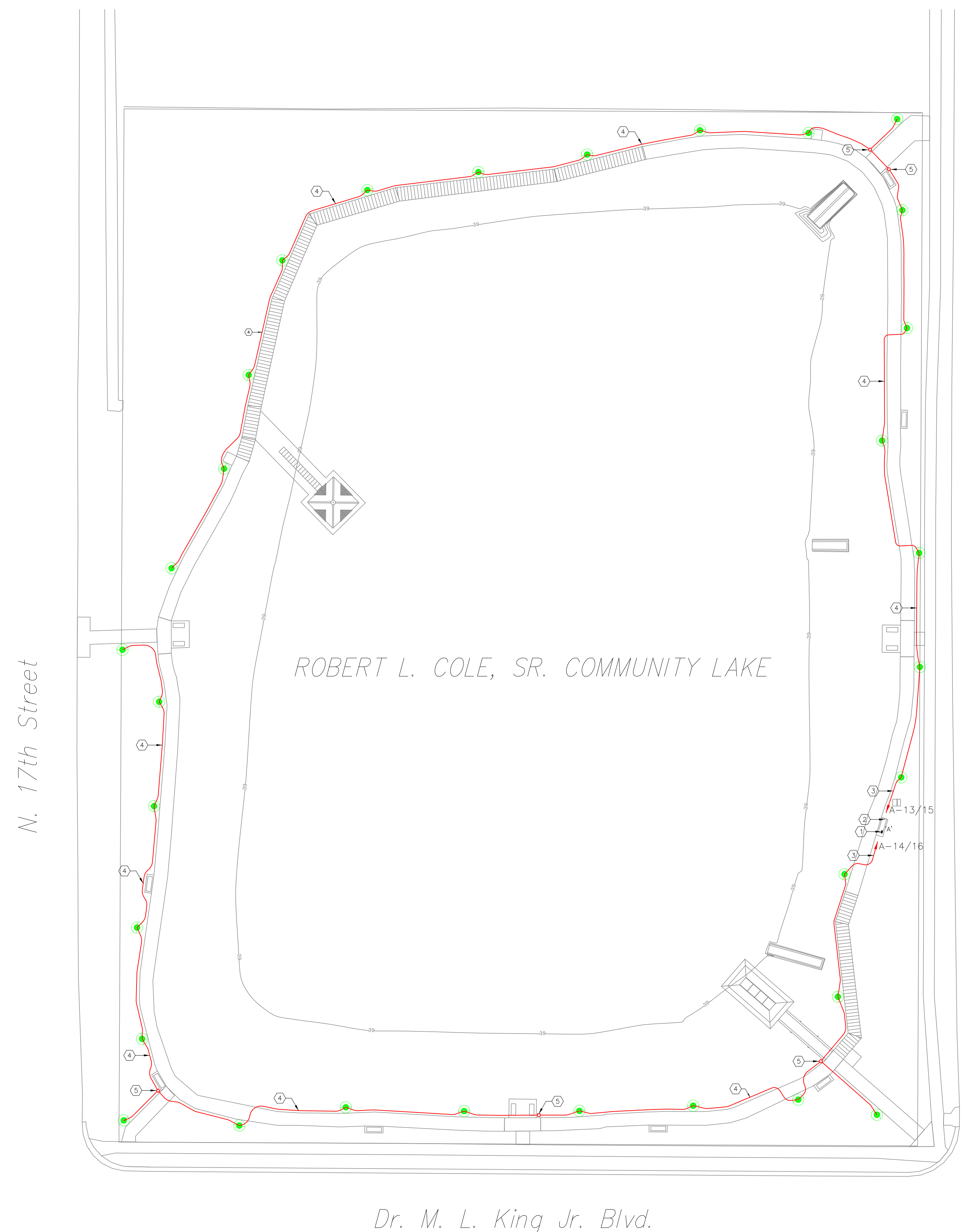
ELECTRICAL ENGINEER: Road Lee
Reg. No. 2276

WALKWAY LIGHTING LUMINAIRE SITE PLAN				
Project No.	Checked	Approved	RL	Revised
Scale	AS NOTED	Drawn	RL	File Name
Scale	AS NOTED	Drawn	RL	RHCA - CE-049
Scale	AS NOTED	Drawn	RL	PHASE 1 - TASK 4 100% SUBMITTAL
Scale	AS NOTED	Drawn	RL	11-12-13
Scale	AS NOTED	Drawn	RL	Revision

Date: 11-12-13
Sheet No. 1 OF 2
E.1

ALL DRAWING AND WRITTEN MATERIAL APPEARING HEREIN CONSTITUTE ORIGINAL AND UNPUBLISHED WORK OF RHCA. COPYRIGHT © 2013. WORK MAY NOT BE DUPLICATED, USED OR DISCLOSED WITHOUT WRITTEN CONSENT OF RHCA.





EXISTING PANEL SCHEDULE

PANEL 'A': SIEMENS LOAD CENTER ; 120/240 VOLTS, 1Ø, 3W ; 100 AMP MAIN CIRCUIT BREAKER ; VERIFY/PROVIDE EQUIPMENT GROUND BAR ; SURFACE ENCLOSURE

EQUIPMENT SERVED	CIRCUIT BREAKER			KVA/PHASE		CIRCUIT		CIRCUIT BREAKER			EQUIPMENT SERVED		
	POLE	AMPS	FRAME	A	B	NO.	NO.	A	B	POLE		AMPS	FRAME
RECEPTACLES	1	20	QP	0.8		1	2	0.9		2	60	QP	SUB-PANEL "B"
LIGHTING	1	20	QP	0.4	0.4	3	4						
CABINET GFI RECEPTACLE	1	20	QP	0.2		5	6			1		QP	SPACE
IRRIGATION CABINET	1	20	QP		0.4	7	8			1		QP	SPACE
POND PUMP	1	20	QP	1.0		9	10			1		QP	SPACE
SPACE	1					11	12			1			SPACE
NORTH WALKWAY LIGHTING	2	20	QP	0.5		13	14	0.4		2	20	QP	SOUTH WALKWAY LIGHTING
				0.5		15	16		0.4				
SUB-TOTAL KVA				2.5	1.3			1.3	1.3				

TOTAL CONNECTED LOAD = 6.4 KVA (27 AMPS/PHASE BALANCED)

- ### ELECTRICAL PLAN NOTES:
- 1 EXISTING PANEL "A" LOCATION INSIDE ELECTRICAL EQUIPMENT CABINET. VERIFY EXISTING SPARE CONDUIT STUB-OUTS FROM CONCRETE BASE FOR TWO NEW CIRCUITS FOR WALKWAY LIGHTING. PROVIDE NEW LIGHTING CONTACTOR: 4 POLE, 20 AMP, ENCLOSED, ELECTRICALLY-HELD, SIEMENS CLASS LC, INSIDE CABINET FOR THE NEW WALKWAY LIGHTING CIRCUITS HOME RUNS. CONNECT COIL TO 24 VOLT MOTOROLA IRRINET MIR SYSTEM FOR REMOTE CONTROL. PROVIDE HAND-OFF-AUTO SWITCH AND PILOT LIGHT IN CONTACTOR COVER.
 - 2 EXISTING MOTOROLA IRRINET MIR SYSTEM EQUIPMENT LOCATION IN CABINET NEAR ELECTRICAL EQUIPMENT CABINET. COORDINATE INTERCONNECTION OF MIR 24 VOLT SYSTEM TO THE WALKWAY LIGHTING CONTACTOR WITH THE CITY OF TAMPA. VERIFY MIR SPARE CABLE CONDUCTORS FOR EXISTING PUMP AND GAZEBO LIGHTING FOR USE FOR CONTROL OF WALKWAY LIGHTING CONTACTOR.
 - 3 HOME RUN WIRING SHALL BE 2 #10 + #10 GROUND IN 3/4" CONDUIT, MINIMUM 24" BELOW FINISHED GRADE, TO CIRCUIT INDICATED THROUGH THE LIGHTING CONTACTOR.
 - 4 WIRING RUN BETWEEN POLE HANDHOLES SHALL BE 2 #10 + #10 GROUND IN 3/4" CONDUIT, MINIMUM 24" BELOW FINISHED GRADE. WIRING SHALL BE RUN WITHOUT THE USE OF PULL BOXES BETWEEN POLES UNLESS OTHERWISE NOTED. WHERE NOTED, PROVIDE PULL BOX ADJACENT TO WALKWAY, CONCRETE PADS FOR BENCHES AND OTHER EQUIPMENT. ROUTE CONDUIT PARALLEL AND CLOSE TO ADJACENT WALKWAY TO MINIMIZE THE DISTURBANCE OF ANY PLANT MATERIAL AND/OR IRRIGATION LINES WHILE EXERCISING CAUTION TO PREVENT UNDERMINING OF WALKWAY PAVEMENT. CONDUIT CROSSING WALKWAYS SHALL BE BORED UNDER WITHOUT THE USE OF EXCESSIVE WATER TO MINIMIZE THE DISTURBANCE OF BASE MATERIAL. PROVIDE #6 COPPER GROUND CONDUCTOR FROM GROUND LUG INSIDE HANDHOLE TO EXOTHERMICALLY-WELDED CONNECTION TO 8" X 5/8" LONG COPPER-CLAD DRIVEN GROUND ROD AT EACH POLE. PROVIDE ERTECH PART NUMBER T418E LIGHTWEIGHT POLYMER CONCRETE INSPECTION WELL, ATOP EACH GROUND ROD, FLUSH IN GRADE. THIS SHALL BE TYPICAL FOR ALL WALKWAY LIGHTING WIRING.
 - 5 PROVIDE PULL BOX WHICH SHALL BE 8 INCH SQUARE X 7 INCH DEEP, FLUSH IN GRADE, CARLON PART NUMBER E989SSX-UPC. INSTALL CONDUIT INTO THREADED FITTINGS AT BOTTOM.

ALL DRAWING AND WRITTEN MATERIAL APPEARING HEREIN CONSTITUTE ORIGINAL AND UNPUBLISHED WORK OF RHCA. COPYRIGHT © 2013. WORK MAY NOT BE DUPLICATED, USED OR DISCLOSED WITHOUT WRITTEN CONSENT OF RHCA.

WALKWAY LIGHTING ELECTRICAL SITE PLAN

1" = 30'-0"

RHCA CONSULTING ENGINEERS

ROBINSON, HORNOR, COLIBERTO
RHC AND ASSOCIATES, INC.

P.O. BOX 4505
TAMPA, FLA. 33677

TEL: (813) 254-0907
FAX: (813) 254-0744

CITY OF TAMPA - EAST TAMPA COMMUNITY REDEVELOPMENT AGENCY

PARKS AND RECREATION DEPT.

PEDESTRIAN WALKWAY LIGHTING PROJECT

FOR:
ROBERT L. COLE, Sr. COMMUNITY LAKE
1798 E. DR. MARTIN LUTHER KING, Jr., BLVD.
TAMPA, FLORIDA 33610

Drawing Title	WALKWAY LIGHTING LUMINAIRE SITE PLAN			
Project No.	Checked	Approved	Revised	
Scale	AS NOTED	File Name	RHCA - CC-049	11-12-13
Revision	PHASE I - TASK 4 100% SUBMITTAL			

Date: 11-12-13
Sheet No. 2 OF 2

E.2

CONTRACT 14-C-00017; COLE COMMUNITY LAKE LIGHTING IMPS. - PRE-BID CONF. 12/03/2013

E-Mail to Register as a Plan Holder and E-Mail All Questions to: ContractAdministration@tampagov.net

Sign-In Sheet Please Print

City of Tampa, Contract Administration Department

	Name	Organization	E-Mail OR Phone
1	Jim Greiner, PE	Tampa Contract Administration Dept.	Jim.Greiner@tampagov.net
2	Jonathan Dodson	Dodson Const	(813) 831-2093
3	Ryan Powell	MCS OF TAMPA	813.967.6084
4	Thomas A Hester	COT Contract Administration	813.274.8442
5			
6			
7			
8			
9			
10			
11			
12			
13			
14			
15			
16			
17			
18			
19			
20			
21			
22			
23			
24			
25			
26			
27			
28			
29			
30			
31			
32			
33			
34			
35			
36			