



CITY OF TAMPA

Bob Buckhorn, Mayor

CONTRACT ADMINISTRATION DEPARTMENT

Michael W. Chucran, Director

ADDENDUM NO. 1

DATE: February 12, 2016

12-C-00058; Channel District: 12th Street Wastewater Pump Station Improvements - **Rebid**

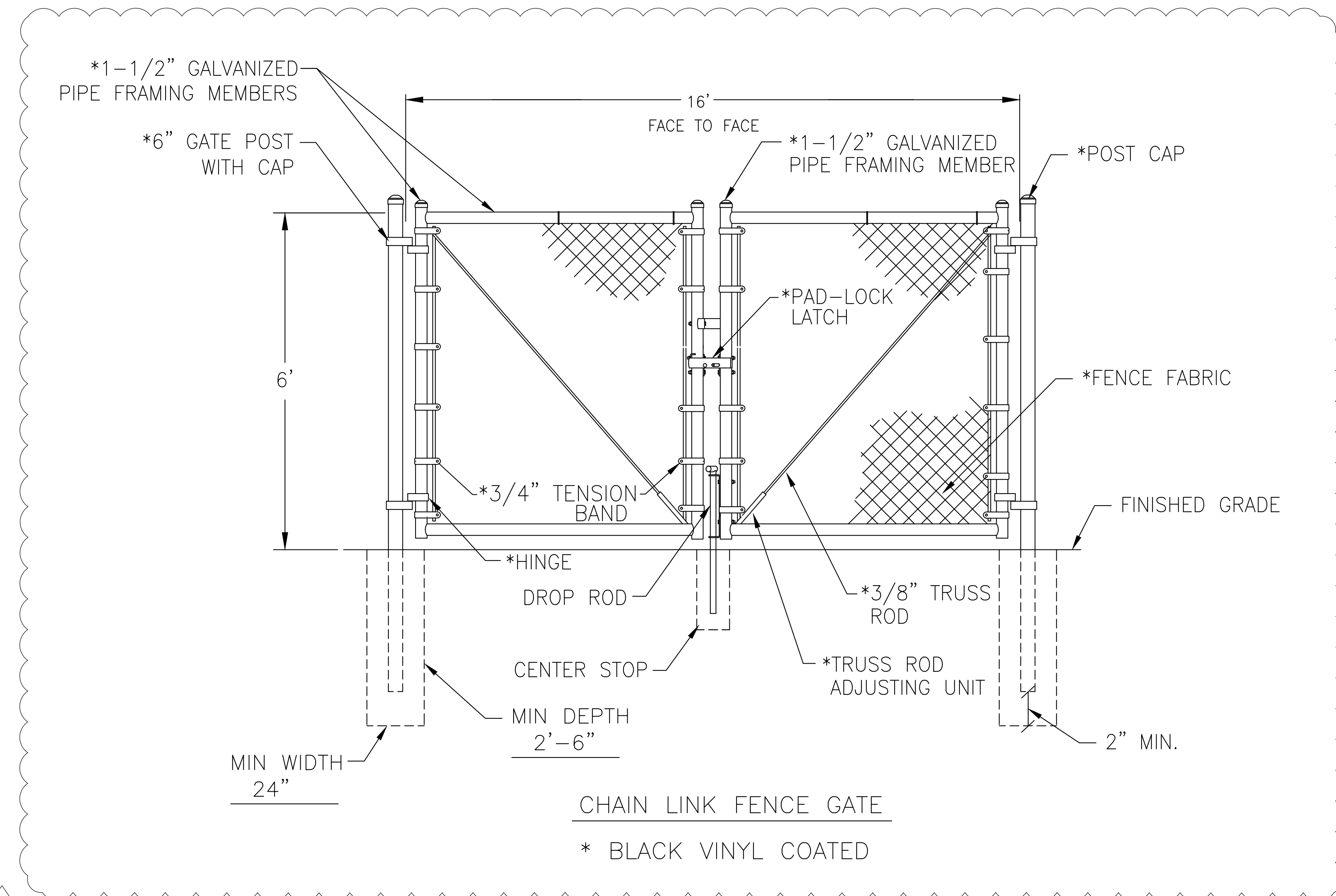
Bidders on the above referenced project are hereby notified that the following addendum is made to the Contract Documents. BIDS TO BE SUBMITTED SHALL CONFORM TO THIS NOTICE.

- Item 1: Specifications: Previous Bid Addenda 2 through 5 are inserted in the front of the Specifications for inclusion as part of the Bid/Contract Documents. The Re-bid Specifications have been conformed to previously issued Addendum 1.
- Item 2: Plans, Sheet No. 015 – Miscellaneous Details, Chain Link Fence Gate: **REPLACE** Sheet No. 015 – Miscellaneous Details with attached Sheet No. 015 indicated to have Revision No. 3 (dated 01/22/2016) for added black vinyl coating. **PROVIDE** black vinyl coating equal to Class 2B, thermally fused and bonded on minimum 9 GA core wire fabric, posts, etc.
- Item 3: Plans, Sheet No. E-1 – Electrical Site Plan: **REPLACE** Sheet No. E-1 – Electrical Site Plan with the attached Sheet No. E-1 indicated to have Revision No. 1 (dated 12/16/15) to re-route conduits.

All other provisions of the Contract Documents and Specifications not in conflict with this Addendum shall remain in full force and effect. Questions are to be e-mailed to Contract Administration@tampagov.net.

Jim Greiner

Jim Greiner, P.E., Contract Management Supervisor

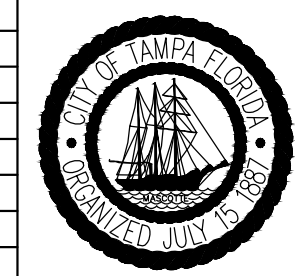


3

NOTES:

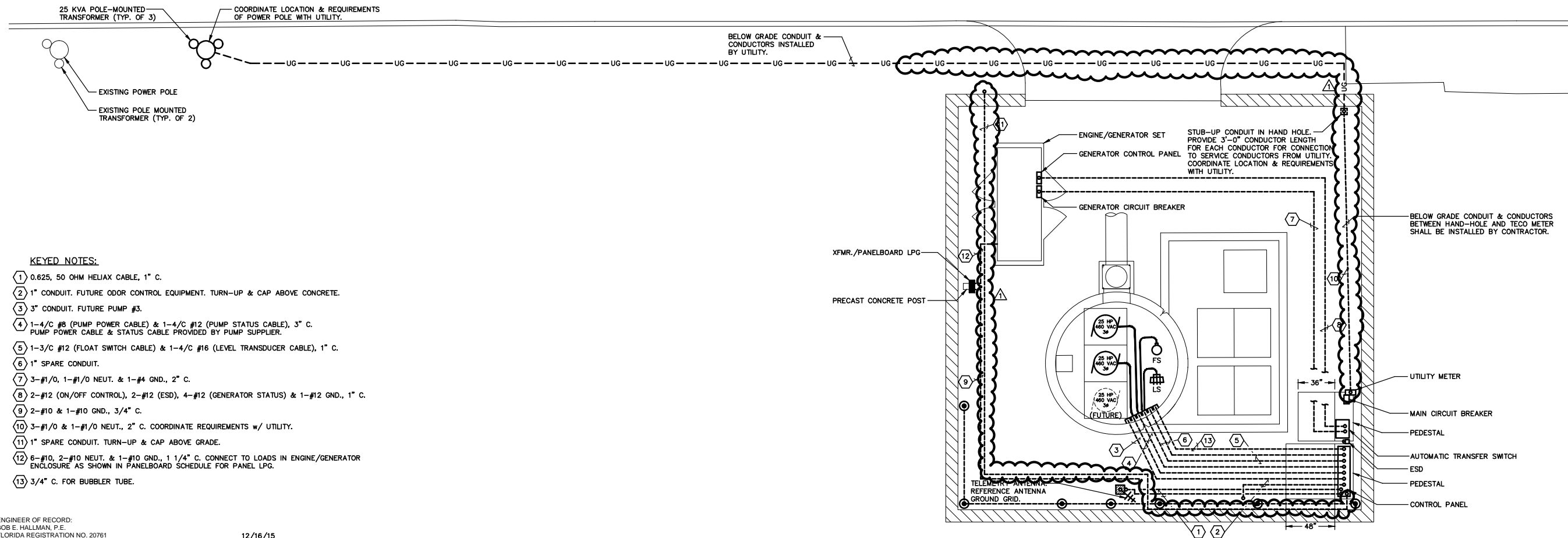
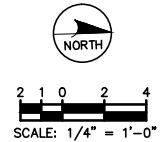
1. ALL FOOTINGS FOR FENCE POSTS SHALL BE 3,000PSI CONCRETE. FOOTINGS SHALL BE A DIAMETER 4 TIMES THE LARGEST CROSS-SECTION OF THE POST AND THE DEPTH SHALL BE A MINIMUM OF 24" PLUS AN ADDITIONAL 3" FOR EACH ONE (1) FOOT INCREASE IN FENCE HEIGHT OVER 4 FEET.
2. INSTALLATION OF FENCE SYSTEMS SHALL FOLLOW ASTM F-567 'STANDARD PRACTICE FOR INSTALLATION OF CHAIN-LINK FENCES'.

Drawn: ELR	Date: 10/2012	01/22/2016	ADDED BLACK VINYL COATING	JA
Designed: ELR	Date: 10/2012			
Checked: JDJ	Date: 10/2012			
Reviewed: HS	Date: 10/2012			
Approved:	Date:			
Approved:	Date:	No:	Date:	Revision:
				By:



Field Book:	
Atlas Sheet:	
File No.	Index No.
Job No. 04915	005-015
Scale: AS NOTED	
SHEET 015	

12TH STREET



KEYED NOTES:

- ① 0.625, 50 OHM HELIAX CABLE, 1" C.
- ② 1" CONDUIT. FUTURE ODOR CONTROL EQUIPMENT. TURN-UP & CAP ABOVE CONCRETE.
- ③ 3" CONDUIT. FUTURE PUMP #3.
- ④ 1-4/C #8 (PUMP POWER CABLE) & 1-4/C #12 (PUMP STATUS CABLE), 3" C. PUMP POWER CABLE & STATUS CABLE PROVIDED BY PUMP SUPPLIER.
- ⑤ 1-3/C #12 (FLOAT SWITCH CABLE) & 1-4/C #16 (LEVEL TRANSDUCER CABLE), 1" C.
- ⑥ 1" SPARE CONDUIT.
- ⑦ 3-#1/0, 1-#1/0 NEUT. & 1-#4 GND., 2" C.
- ⑧ 2-#12 (ON/OFF CONTROL), 2-#12 (ESD), 4-#12 (GENERATOR STATUS) & 1-#12 GND., 1" C.
- ⑨ 2-#10 & 1-#10 GND., 3/4" C.
- ⑩ 3-#1/0 & 1-#1/0 NEUT., 2" C. COORDINATE REQUIREMENTS W/ UTILITY.
- ⑪ 1" SPARE CONDUIT. TURN-UP & CAP ABOVE GRADE.
- ⑫ 6-#10, 2-#10 NEUT. & 1-#10 GND., 1 1/4" C. CONNECT TO LOADS IN ENGINE/GENERATOR ENCLOSURE AS SHOWN IN PANELBOARD SCHEDULE FOR PANEL LPG.
- ⑬ 3/4" C. FOR BUBBLER TUBE.

ENGINEER OF RECORD:
BOB E. HALLMAN, P.E.
FLORIDA REGISTRATION NO. 20761
12/16/15

EDT Engineering Design Technologies Corp.
P.O. Box 152403
Tampa, FL 33684-2403
813.289.8080
813.282.9194 FAX
engineering@edt1.com

Certificate of Authorization Number: 4795

Stantec
Stantec Consulting Services
2205 North 20th Street, Tampa, FL 33605
Phone 813-223-9500 • Fax 813-223-9500
Certificate of Authorization #27013 •
www.stantec.com

BOB E. HALLMAN, P.E.
FLORIDA REGISTRATION NO. 20761

Drawn:	RWB	Date:	05/15
Designed:	SS	Date:	05/15
Checked:	BEH	Date:	05/15
Reviewed:	BEH	Date:	05/15
Approved:	Date:	12/16/15	RE-ROUTE CONDUITS
Approved:	Date:	No:	Date:



CITY OF TAMPA
ECONOMIC AND URBAN
DEVELOPMENT DEPARTMENT

**CHANNEL DISTRICT
12TH STREET PUMP STATION**
ELECTRICAL SITE PLAN

Field Book:	
Atlas Sheet:	
File No.:	Index No.:
Job No. 01021WM	
Scale: 1/4" = 1'-0"	
SHEET E-1/016	