



CITY OF TAMPA

Bob Buckhorn, Mayor

CONTRACT ADMINISTRATION DEPARTMENT

David L. Vaughn, AIA, Director

ADDENDUM NO. 1

DATE: June 10, 2013

Contract 13-C-00004; Howard F. Curren AWTP Miscellaneous Sluice Gates Replacement

Bidders on the above referenced project are hereby notified that the following addendum is made to the Contract Documents. BIDS TO BE SUBMITTED SHALL CONFORM TO THIS NOTICE.

Item 1: Insert the attached information as referenced in Specific Provisions Section
SP-138 – Record Drawings.

All other provisions of the Contract Documents and Specifications not in conflict with this Addendum shall remain in full force and effect. Questions are to be e-mailed to ContractAdministration@tampagov.net.

Jim Greiner

Jim Greiner, P.E., Contract Management Supervisor

SLUICE GATE SCHEDULE

Gate Designation Number	Size Inches	Type	Service	No. Regd.	Elevation at CL Gate	Operating Head Feet at CL Gate	Direction of Head	Closure	Operator	Remarks
<u>Filter Building</u>										
FB-SG-1,2	36 x 60	DO,SC	ND	2	15.00	4.00	U	Std.	EO	(1)
<u>Post Aeration-Chlorination Tanks</u>										
CA-SG-1,2,3,4	60 x 72	RS	ND	4	3.00	10.73	S & U	FB	EO	
CA-SG-5,6	12 x 12	RS	ND	2	-2.33	16.06	S	FB	HO	
CA-SG-7,8	24 x 24	RS	ND	2	1.00	12.73	S	FB	HO	
<u>Aerobic Digestion Tanks</u>										
ST-SG-1,2,3,4	12 x 12	RS	ND	4	4.00	18.00	S	FB	HO	

(1) Battery-operated for emergency service.

OPERATION AND MAINTENANCE MANUAL
SLUICE GATES

FOR: Hookers Point Sewage Treatment Plant
Tampa, Florida

CONTRACTOR: Economy Mechanical Industries, Inc.
Doraville, Georgia

SHOP ORDER: 66097-2

SERIAL NO. 66097-2-9-7

RODNEY HUNT COMPANY
ORANGE, MASSACHUSETTS

December 27, 1977

; Contract 4H-6

Item #1 Filter Building - Gates FB-SG1 & 2

Two (2) - 60" x 36", Series 125, Flange frame, self-contained sluice gates arranged for inverted operation, cast iron construction, fully bronze mounted, suitable for seating or unseating head service. Stainless steel operating stem. Electric operator mounted on gate yoke, sized for the proper operation of the gate at 12" per minute with 460 volt, 3 phase, 60 cycle current. Unit complete with weather-proof motor, gearing, two train geared limit switch, double torque switch, auxiliary handwheel, integral reversing controller, integrally mounted pushbutton station 3B/2L, mechanical dial position indicator, control voltage transformer with fused secondary, strip heaters and a galvanized stem cover. Wall thimble, 12" deep, "F" section. Silicon bronze studs, nuts and anchor bolts.

Item #2 Chlorination Tanks - Gates CA-SG1 thru 4

Four (4) - 60" x 72", Series HY-Q-120, Flange frame, flush bottom closing sluice gates, cast iron construction, fully bronze mounted, suitable for a seating or unseating head of 10.73 ft. Stainless steel operating stem arranged for a centerline of gate to base of floorstand dimension of 16.0 ft. Operating stem complete with thrust nut and stem guides. Electric floorstand operator sized for the proper operation of the gate at 12" per minute with 460 volts, 3 phase, 60 cycle current. Unit complete with weatherproof motor, gearing, two train geared limit switch, double torque switch, handwheel for auxiliary operation, integral reversing controller, integrally mounted pushbutton station 3B/2L, mechanical dial position indicator, control voltage transformer with fused secondary, strip heaters and a galvanized stem cover all mounted on a cast iron pedestal. Wall thimble, 12" deep, "F" section, Silicon bronze studs, nuts and anchor bolts.

Item #3 - Chlorination Tanks - Gates CA-SG5 & 6

Two (2) - 12" diameter, Series HY-Q-260, flange frame, flush bottom closing sluice gates, cast iron construction, fully bronze mounted, suitable for seating head service. Gates to bolt to 125# pipe flange by others. Stainless steel operating stem arranged for a centerline of gate to base of floorstand dimension of 21'-4". Operating stem complete with stop collar, thrust nut, coupling and stem guides. Handwheel operated floorstand, Rodney Hunt Model S-2600 complete with clear plastic indicating stem cover. Silicon bronze attaching studs, nuts and anchor bolts.

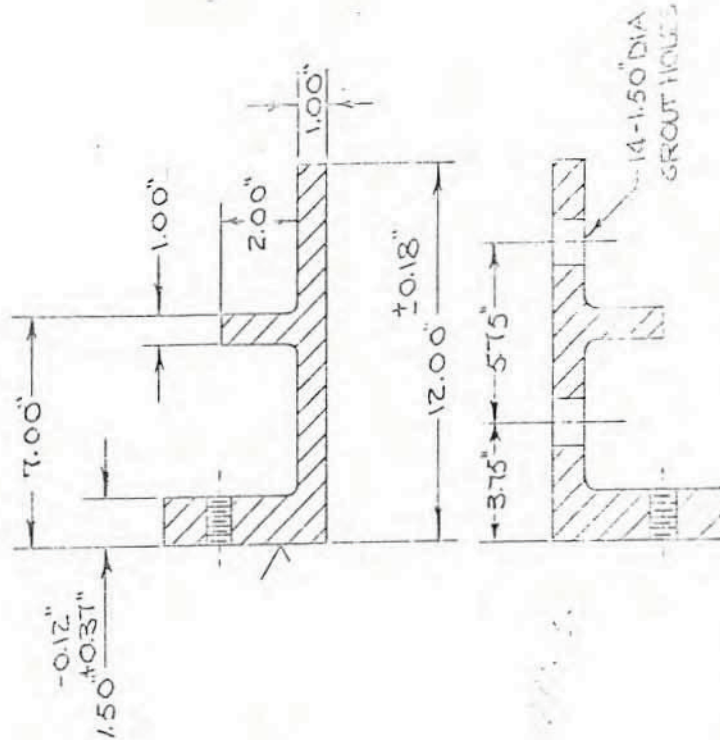
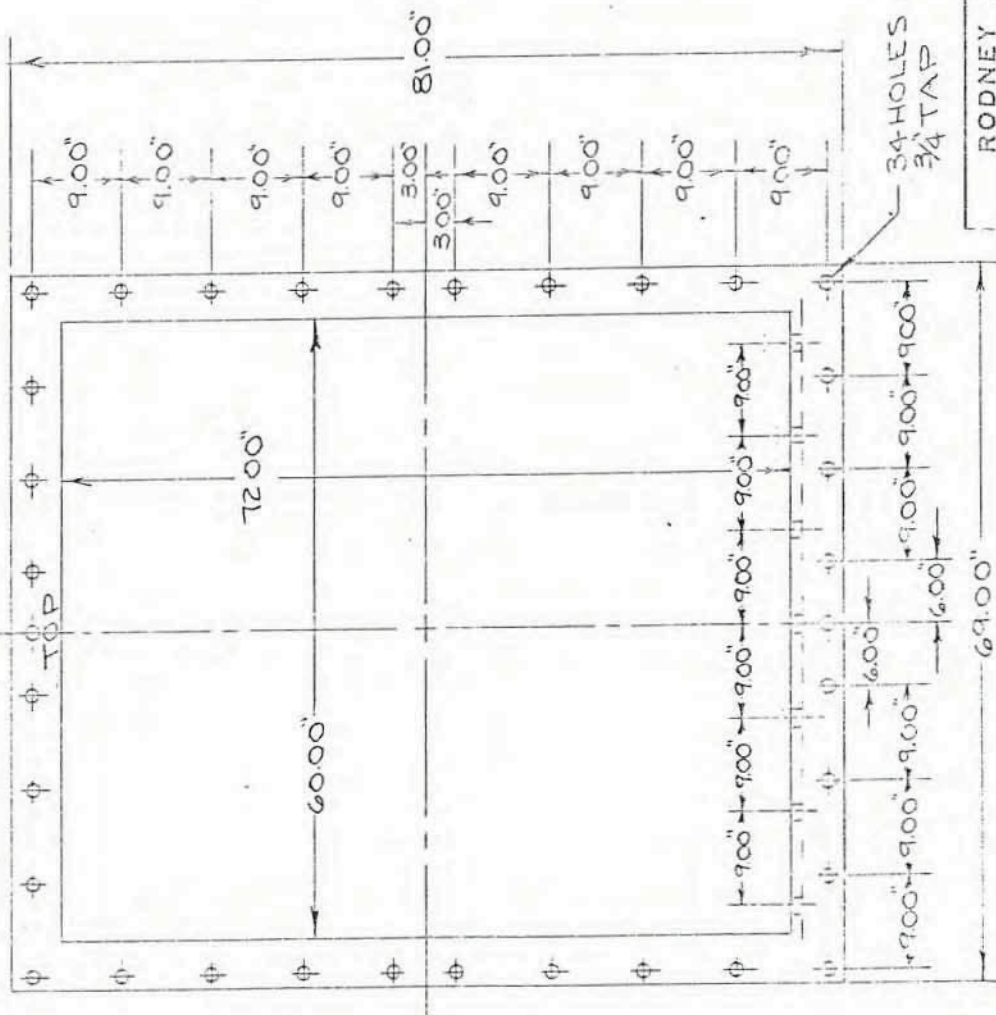
Item #4 - Chlorination Tanks - Gates CA-SG7 & 8

Two (2) - 24" x 24", Series HY-Q-220, flange frame, flush bottom closing sluice gates, cast iron construction, fully bronze mounted, suitable for seating head service. Stainless steel operating stem arranged for a centerline of gate to base of floorstand dimension of 13'-6". Operating stem complete with stop collar, thrust nut and stem guides. Crank operated two speed floorstand Rodney Hunt Model S-5001 complete with clear plastic indicating stem cover. Wall thimble, 12" deep, "F" Section. Silicon bronze studs, nuts and anchor bolts.

Item #5 - Aerobic Digestion Tanks - Gates ST-SG1 through 4

Four (4) - 12" diameter, Series HY-Q-260, flange frame, flush bottom closing sluice gates, cast iron construction, fully bronze mounted, suitable for seating head service. Gates designed to mount to 125# pipe flange by others. Stainless steel operating stem arranged for a centerline of gate to base of floorstand dimension of 23'-0". Operating stem complete with stop collar, thrust nut, coupling and stem guides. Handwheel floorstand, Rodney Hunt Model S-2600 complete with clear plastic indicating stem cover. Silicon bronze attaching studs, nuts and anchor bolts.

NOTES



C.T. PATTERN NO. 2-3513-10

RODNEY HUNT COMPANY, ORANGE, MASS., 01304

TEMPLATE NO. B-060122

THIS PRINT IS THE PROPERTY OF RODNEY HUNT COMPANY. THOSE WHO ACCEPT THIS PRINT AGREE THAT IT SHALL NOT BE GIVEN, LOANED, EXHIBITED OR COPIED AND THAT IT SHALL BE RETURNED UPON REQUEST TO RODNEY HUNT COMPANY. NOVEL AND PATENTABLE FEATURES SHOWN ARE PROTECTED BY U.S. AND OR FOREIGN PAT. AND PAT. APPL. NO.

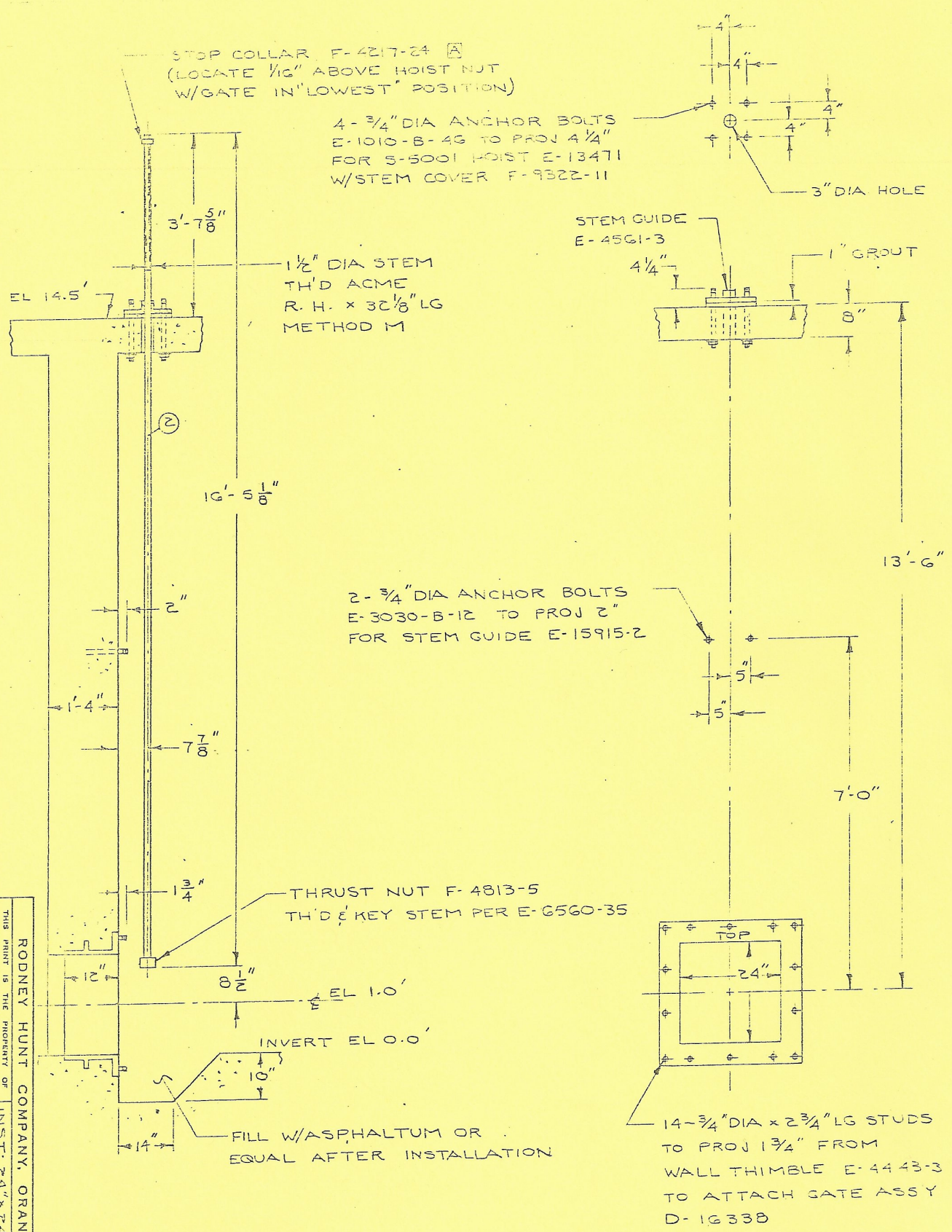
ALT.	CHANGE	BY	CHKD.	DATE	ALT.	CHANGE	BY	CHKD.	DATE

FOUNDRY

DRAWN	W.P.	DESIGNED		DATE	
CHECKED		APPROVED		BY	
ORDER NO.		DWG. NO.			

F SECT - 12" DEEP

CHANGE	BY	CHKD	DATE	ALT.
CHANGE	BY	CHKD	DATE	ALT.
CHANGE	BY	CHKD	DATE	ALT.
CHANGE	BY	CHKD	DATE	ALT.

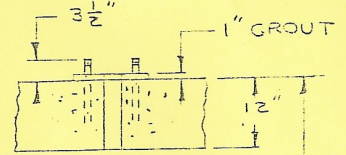


ORDER ITEM # 4 ~ CA 50-7 & 8
 TWO (2) UNITS REQ'D FOR
 POST AERATION-CHLORINATION TANKS
 HOOKER POINT DIV 4H-G
 CITY OF TAMPA, FLA

THIS PRINT IS THE PROPERTY OF
 RODNEY HUNT COMPANY, ORANGE, MASS. 01
 INST: 24" x 24" SLUDGE CA
 SERIES HY-0-200 FDI
 TITAN SE
 DRAWN DJS DESIGN... DATE

NOTES

4- 3/4" DIA ANCHOR BOLTS
 E-3030-B-13 TO PROJ 3 1/2"
 FOR S-2200 HOIST E-2398
 W/18" HANDWHEEL D-7505-3
 STEM COVER F-8803-5



EL 19.0'

1 1/2" DIA STEM
 TH'D ACME
 L.H. x 19 3/16" LG
 METHOD M

3'-3 1/2"

14'-7 1/2"

6'-3"

21'-4"

5'-11"

COUPLING E-6565-5
 TH'D & KEY STEM PER E-6560-5

2- 3/4" DIA ANCHOR BOLTS
 E-3030-B-12 TO PROJ 2"
 FOR STEM GUIDE E-15915-2

THRUST NUT F-4545-A-5
 TH'D & PIN STEM PER F-8824-5

6'-10"

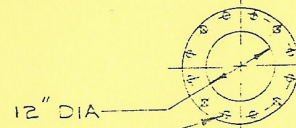
3'-0"

9'-5"

EL - 2.33'

PIPE FLANGE
 (BY OTHERS)

FILL W/ ASPHALTUM OR
 EQUAL AFTER INSTALLATION



12" DIA
 12- 7/8" DIA TAPPED HOLES
 ON A 17" DIA B.C. (125)
 EQUALLY SP'D - STRADDLE IN
 12- 7/8" DIA x 3 3/8" LG STUDS
 TO ATTACH GATE ASSY
 D-13523-7

ORDER ITEM #3 ~ CA 56566
 TWO (2) UNITS REQ'D FOR
 POST AERATION & CHLORINATION TANKS
 HOOKERS POINT DIV 4H-G
 CITY OF TAMPA, FLA.

FOR MAT'L S SEE SPECIFICATION SHEET GG097-2

CHANGE	BY	DATE	CHANGE	BY	DATE
1	JA	5/21/70			
2					
3					
4					
5					

THIS PRINT IS THE PROPERTY OF RODNEY HUNT COMPANY. THOSE WHO ACCEPT THIS PRINT AGREE THAT IT SHALL NOT BE GIVEN, LOANED, EXHI- BITED, COPIED AND THAT IT SHALL BE RETURNED TO THE COMPANY AND THAT THE HUNT COMPANY MODEL AND PATENT- ABLE FEATURES SHOWN ARE PROTECT- ED BY U.S. AND OR FOREIGN PAT. AND PAT. PERS.	RODNEY HUNT COMPANY, ORANGE, MASS., 01364 INST: 12" DIA SLUICE GATE SERIES HY-G-RGS FOR TITAN SEC.
DRAWN DRS CHECKED [] DESIGNED [] APPROVED []	DATE: 2-9-70

NOTES



OPERATION AND MAINTENANCE MANUAL
SLUICE GATES

FOR: Hookers Point Wastewater Treatment Plant
Tampa, Florida

CONTRACTOR: Vogel Bros. Building Co.

P. O. No: 1031-2

SHOP ORDER: 45661-2

SERIAL NO. 45661-2-4- 4

RODNEY HUNT COMPANY
Orange, Massachusetts

DATE: OCT 10 1984

45661-2

ORDER ACKNOWLEDGEMENT

DATE: July 2, 1984

OUR ORDER: 45661-2 084001 084002 082003

YOUR ORDER: #1031-2

SOLD TO: Vogel Bros. Building Co. 21045
P.O. Box 5200
Lakeland, FL 33803

SHIP TO: LATER

PROJECT: Hookers Point WWTP
Tampa, FL

WE ARE SUPPLYING THE FOLLOWING EQUIPMENT

Item #1 - Plan Sheet 3

Location: Reclaimed Water Pump Station
Quantity: Two (2) Sluice Gates
Size: 18" x 24"
Gate: Cast iron with bronze seat facings and wedges
Hoist: Floor mounted, crank operated with gate position
 indication on stem cover
Stem: Stainless steel with stem guides and stem cover
Wall thimble: 16" deep, F section
Fasteners: Stainless steel studs, nuts and anchor bolts

Item #2 - Plan Sheet #3

Location: Reclaimed Water Pump Station
Quantity: Two (2) Sluice Gates
Size: 18" x 24"
Gate: Cast iron with bronze seat facings and wedges
Hoist: Floor mounted, crank operated with gate position indication on stem cover
Stem: Stainless steel with stem guides and stem cover
Wall thimble: None provided
Fasteners: Stainless steel Expansion anchor bolts

F.O.B. Orange, MA with freight prepaid and allowed to Tampa, FL

Identification Numbers 016-012-01-0000

Location northeast

Equipment Description Reclaimed Water Pump Station

Equipment	Sluice Gate Valve		
Manufacturer	Rodney Hunt		
Serial Number			
Frame			
HP			
RPM			
Volts			
Amps			
Phase			
Cycle			
Model Part Number	45661-1	E310772	
Type Stem	Stainless Steel w/stem guide & stem cover		
Drive Hoist S5002	Floor mounted, crank operated w/gate position on stem cover		
Bearing Type			
Installation Fastners	Stainless Steel Studs, Nuts & Anchor Bolts		
Capacity			
Code			
Packing Size			
Impeller			
Size	18"x24"		
Gate	Cast Iron w,bronze seat facings & wedges		
Wall thimble	16" deep, F section		
Lubricant			
Interval			
Maint. Requirement			
Inspection Requirement			
Inspection Interval			

EQUIPMENT

RECORD

Identification Numbers 016-012-02-0000

Location: northwest

Equipment Description Reclaimed Water Pump Station

Equipment	Sluice Gate Valve		
Manufacturer	Rodney Hunt		
Serial Number			
Frame			
HP			
RPM			
Volts			
Amps			
Phase			
Cycle			
Model	Part Number	45661-2	E31076-1
Type	Stem	Stainless Steel w/stem guide & stem cover	
Drive	Hoist S5002	Floor mounted, cranck operated w/gate position indication on stem cov	
Bearing Type			
Installation Fasteners	Stainless Steel Studs, Nuts & Anchor Bolts		
Capacity			
Code			
Packing Size			
Impeller			
Size	18"x24"		
Gate	Cast Iron w/bronze seat facings & wedges		
Wall thimble	16" deep, F section		
Lubricant			
Interval			
Maint. Requirement			
Inspection Requirement			
Inspection Interval			

Identification Numbers 016-012-03-0000

Equipment Description Reclaimed Water Pump Station

Equipment	Sluice Gate Valve		
Manufacturer	Rodney Hunt		
Serial Number			
Frame			
HP			
RPM			
Volts			
Amps			
Phase			
Cycle			
Model Part Number	45661-2	E31076-1	
Type Stem	Stainless Steel w/stem guide & stem cover		
Drive Hoist S5002	Floor mounted, crank operated w/gate position indication on stem cover		
Bearing Type			
Installation Fasteners	Stainless Steel studs, nuts & anchor bolts		
Capacity			
Code			
Packing Size			
Impeller			
Size	18"x24"		
Gate	Cast iron w/bronze seat facings & wedges		
Wall thimble	16" deep, F section		
Lubricant			
Interval			
Maint. Requirement			
Inspection Requirement			
Inspection Interval			

EQUIPMENT

RECORD

Identification Numbers 016-012-04-0000

Location southwest

Equipment Description Reclaimed Water Pump Station

Equipment	Sluice Gate Valve		
Manufacturer	Rodney Hunt		
Serial Number			
Frame			
HP			
RPM			
Volts			
Amps			
Phase			
Cycle			
Model	Part Number	45661-1	E310772
Type	Stem	Stainless Steel w/stem guide & stem cover	
Drive	Hoist S5002 Floor Mounted, crank operated w/gate position on stem cover		
Bearing Type			
Installation Fastners	Stainless Steel Studs, nuts & anchor bolts		
Capacity			
Code			
Packing Size			
Impeller			
Size	18"x24"		
Gate	Cast iron w/bronze seat facings & wedges		
Wall thimble	16" deep, F section		
Lubricant			
Interval			
Maint. Requirement			
Inspection Requirement			
Inspection Interval			

LIST OF DRAWINGS
HOOKERS POINT WWTP
RODNEY HUNT SHOF ORDER 45661-2



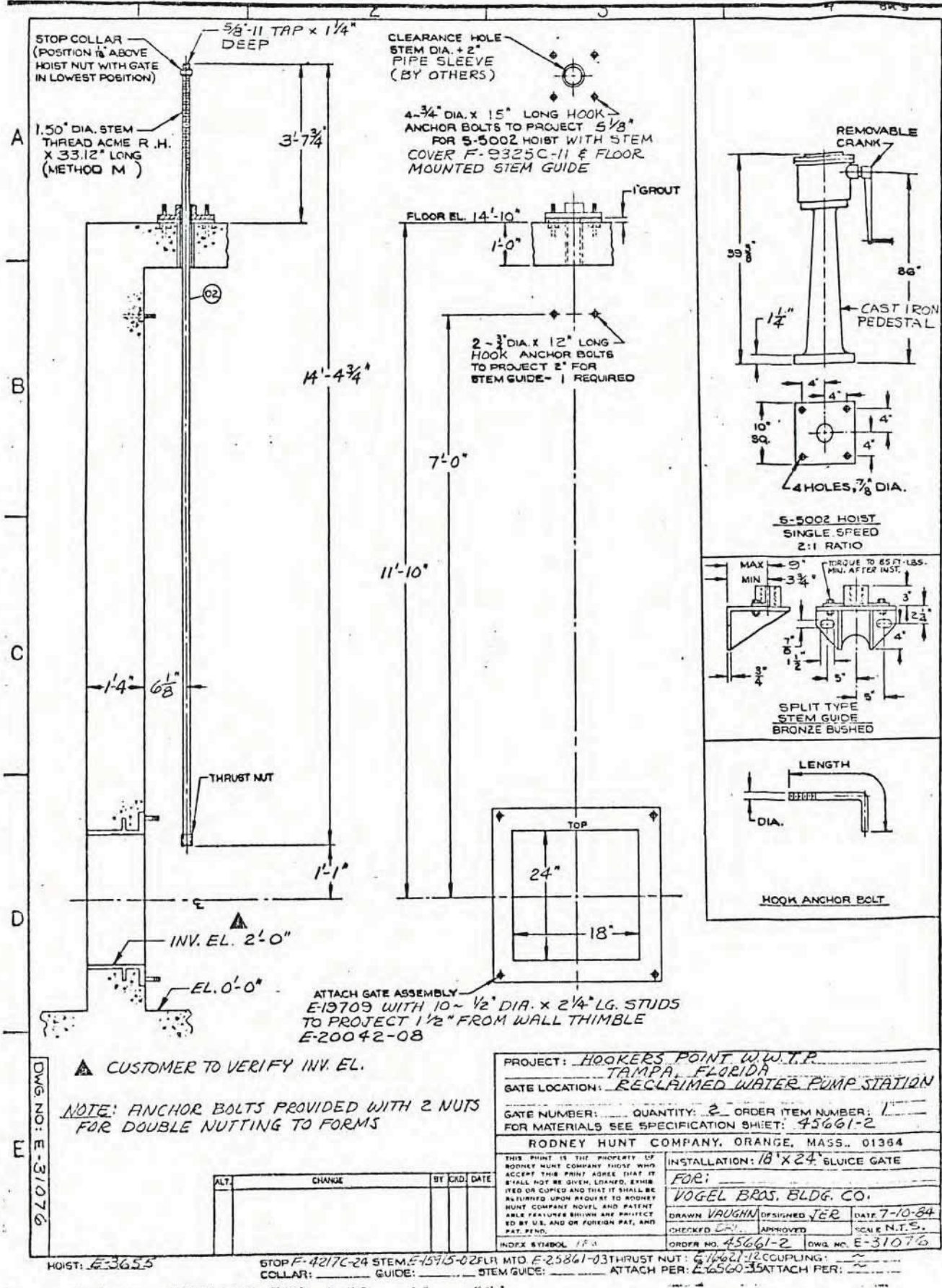
Material Specification Sheet

Item #1 - Reclaimed Water Pump Station

E-31076	Installation:	18" x 24" Sluice Gate
E-19709	Assembly:	18" x 24" Sluice Gate
E-20042-08	Detail:	18" x 24" Wall Thimble, "F" Section, 16" Deep
E-3655	Assembly:	Type S-5002 Hoist
E-15915-02	Assembly:	Stem Guide
E-25861-03	Detail:	Floor Mounted Stem Guide
F-9325C-11	Assembly:	Pipe Cover

Item #2 - Reclaimed Water Pump Station

E-31077	Installation:	18" x 24" Sluice Gate
E-19709	Assembly:	18" x 24" Sluice Gate
E-3655	Assembly:	Type S-5002 Hoist
E-15915-02	Assembly:	Stem Guide
E-25861-03	Detail:	Floor Mounted Stem Guide
F-9325C-11	Assembly:	Pipe Cover



STOP COLLAR
(POSITION 1/2" ABOVE
HOIST NUT WITH GATE
IN LOWEST POSITION)

5/8"-11 TAP x 1/4"
DEEP

A 1.50" DIA. STEM
THREAD ACME R.H.
X 33.12" LONG
(METHOD M)

3'-7 3/4"

B 14'-4 3/4"

C 7'-0"

1'-1"

THRUST NUT

D INV. EL. 2'-0"

EL. 0'-0"

E ATTACH GATE ASSEMBLY
E-13709 WITH 10-1/2" DIA. x 2 1/4" LG. STUDS
TO PROJECT 1/2" FROM WALL THIMBLE
E-20042-08

CLEARANCE HOLE
STEM DIA. + 2"
PIPE SLEEVE
(BY OTHERS)

4-3/4" DIA. x 15" LONG HOOK-
ANCHOR BOLTS TO PROJECT 5/8"
FOR S-5002 HOIST WITH STEM
COVER F-9325C-11 & FLOOR
MOUNTED STEM GUIDE

FLOOR EL. 14'-10"

1-0"

1" GROUT

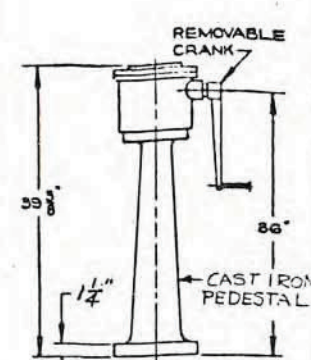
2-3/8" DIA. x 12" LONG
HOOK ANCHOR BOLTS
TO PROJECT 2" FOR
STEM GUIDE - 1 REQUIRED

11'-10"

TOP

24"

18"



REMOVABLE
CRANK

39 3/8"

86"

1 1/4"

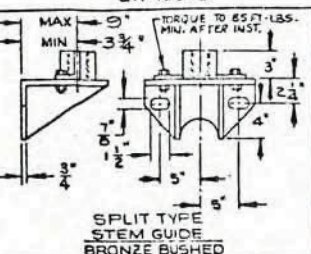
CAST IRON
PEDESTAL

10" SQ.

4" x 4"

4 HOLES, 7/8" DIA.

S-5002 HOIST
SINGLE SPEED
2:1 RATIO



SPLIT TYPE
STEM GUIDE
BRONZE BUSHED

MAX 9"

MIN 3 3/4"

TORQUE TO 657-
LBS.-
MIN. AFTER INST.

3"

1 1/2"

4"

5"

5"

LENGTH

DIA.

HOOK ANCHOR BOLT

▲ CUSTOMER TO VERIFY INV. EL.

NOTE: ANCHOR BOLTS PROVIDED WITH 2 NUTS
FOR DOUBLE NUTTING TO FORMS

PROJECT: HOOKERS POINT W.W.T.P.
TAMPA, FLORIDA

GATE LOCATION: RECLAIMED WATER PUMP STATION

GATE NUMBER: _____ QUANTITY: 2 ORDER ITEM NUMBER: 1
FOR MATERIALS SEE SPECIFICATION SHEET: 45661-2

RODNEY HUNT COMPANY, ORANGE, MASS., 01364

INSTALLATION: 18" x 24" GLUCE GATE

FOR:
VOGEL BROS. BLDG. CO.

DRAWN VAUGHN DESIGNED JEK DATE 7-10-84

CHECKED CR APPROVED _____ SCALE N.T.S.

INDEX SYMBOL 11.3 ORDER NO. 45661-2 DWG. NO. E-31076

ALT.	CHANGE	BY	CHKD.	DATE

HOIST: E-3655 STOP F: 4217C-24 STEM: E-13715-02 FLR MTD: E-25861-03 THRUST NUT: E-11621-12 COUPLING: E-26560-35

COLLAR: _____ GUIDE: _____ STEM GUIDE: _____ ATTACH PER: _____ ATTACH PER: _____

DWG. NO. E-31076

