



CITY OF TAMPA

Bob Buckhorn, Mayor

CONTRACT ADMINISTRATION DEPARTMENT

David L. Vaughn, AIA, Director

ADDENDUM NO. 1

DATE: June 25, 2014

Contract 14-C-00043; Hyde Park Gateway Improvements

Bidders on the above referenced project are hereby notified that the following addendum is made to the Contract Documents. BIDS TO BE SUBMITTED SHALL CONFORM TO THIS NOTICE.

- Item 1: Replace Drawing Nos. E102, L120 and L301 with the attached Drawing Nos. E102, L120 and L301.
- Item 2: Attached for reference is the Pre-bid meeting Sign-in sheet.

All other provisions of the Contract Documents and Specifications not in conflict with this Addendum shall remain in full force and effect. Questions are to be e-mailed to ContractAdministration@tampagov.net.

Jim Greiner

Jim Greiner, P.E., Contract Management Supervisor

PANEL SH				CIRCUIT BREAKER TYPE 277 / 480 V., 3 PH., 4W. SQUARE-D NF NEMA 3R ENCLOSURE				100A. MAIN CIRCUIT BREAKER SURFACE MTD. - NEMA 3R			
CKT. NO.	NO. OF POLES	TRIP AMPS	VOLT AMPS	LOAD	CKT. NO.	NO. OF POLES	TRIP AMPS	VOLT AMPS	LOAD		
1	3	70	9667	AQUASTAR FOUNTAIN (AF)	2	3	25	2860	15 KVA TRANSFORMER		
3	-	-	9667	-	4	-	-	1040	-		
5	-	-	9667	-	6	-	-	-	-		
7	1	-	-	SPACE	8	1	20	250	SITE LIGHTING		
9	1	-	-	SPACE	10	1	-	-	SPACE		
11	1	-	-	SPACE	12	1	-	-	SPACE		
13	1	-	-	SPACE	14	1	-	-	SPACE		
15	1	-	-	SPACE	16	1	-	-	SPACE		
17	1	-	-	SPACE	18	1	-	-	SPACE		

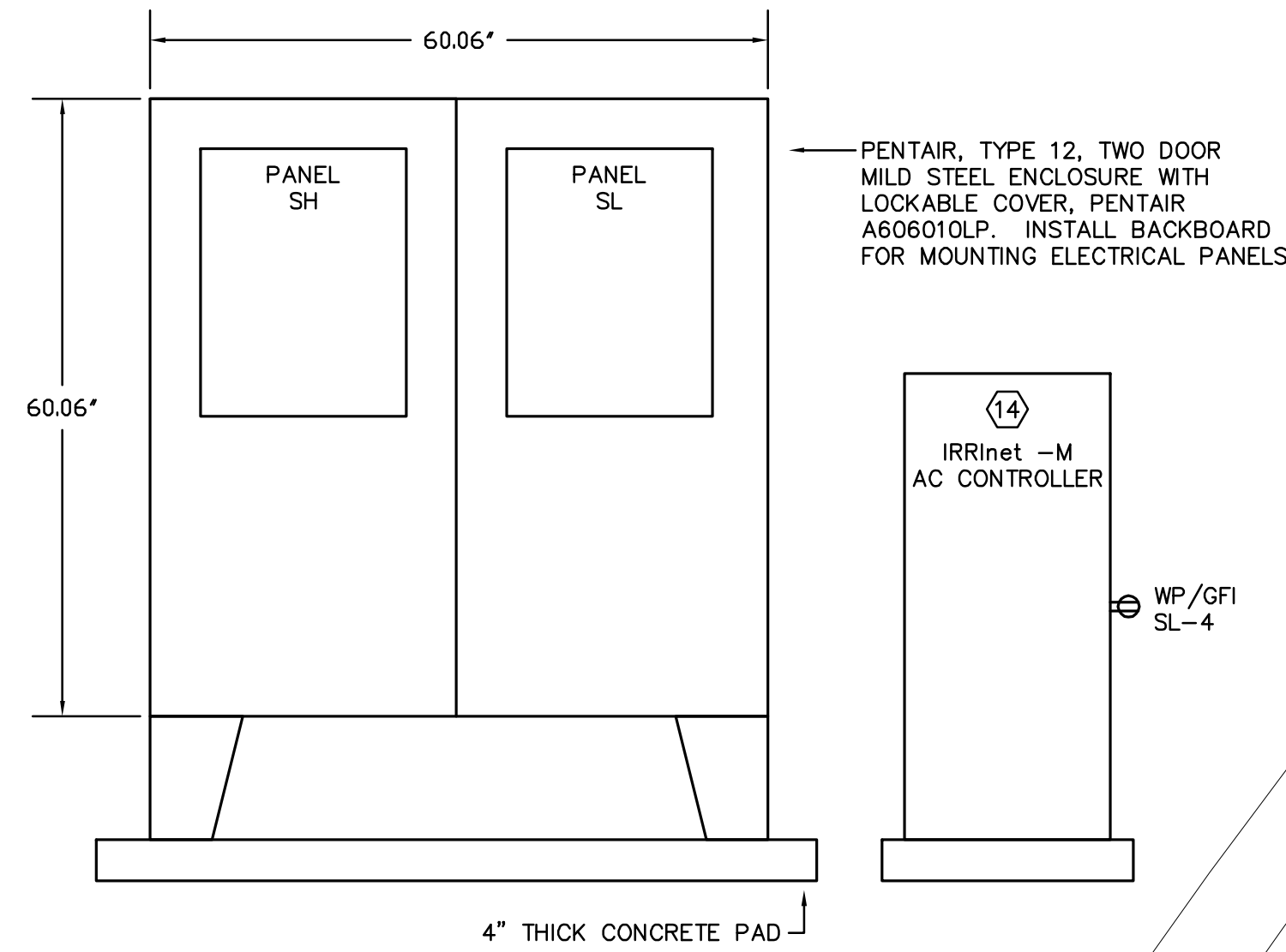
ALL BREAKERS SHALL HAVE A MINIMUM OF 14,000 A.I.C. SYMMETRICAL AT 480 VOLTS

LIGHTING @ 125% = 2,812 VA
 FOUNTAINS @ 100% = 30,721 VA
 MIR CONTROLLER @ 100% = 180 VA
 TOTAL = 33,533 VA (40 AMPS)

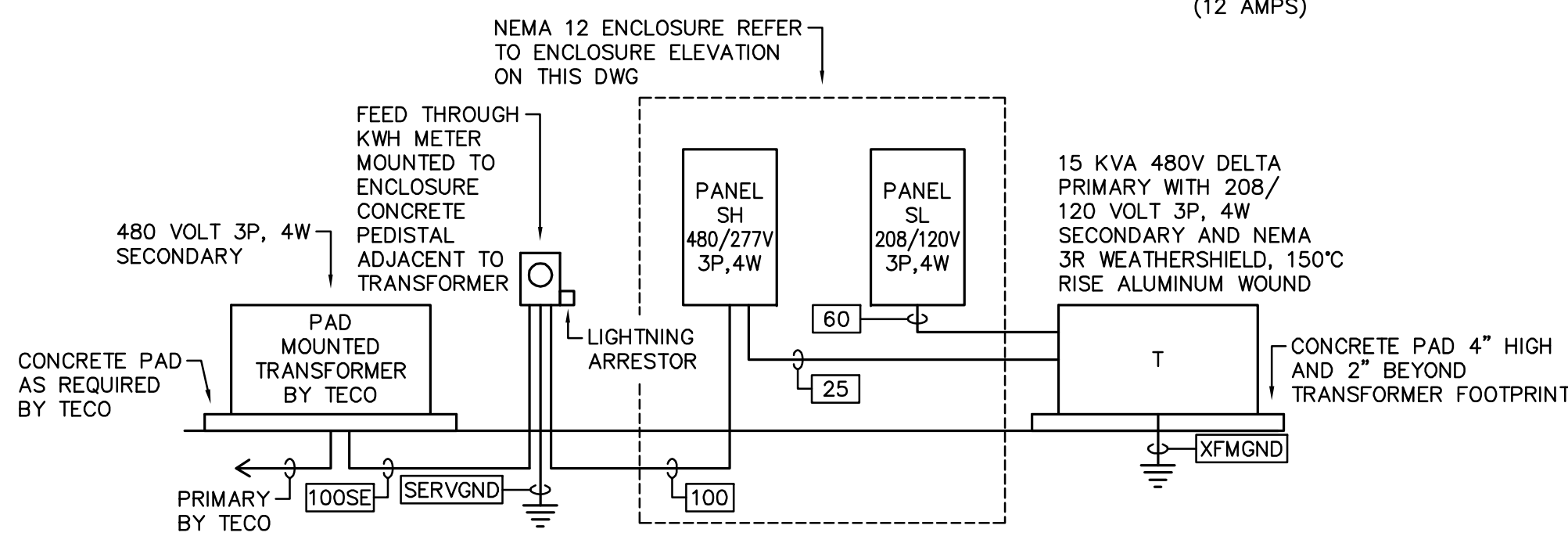
PANEL SL				CIRCUIT BREAKER TYPE 120 / 208 V., 3 PH., 4W. SQUARE -D NQ NEMA 3R ENCLOSURE				60A. MAIN CIRCUIT BREAKER SURFACE MTD. - NEMA 3R			
CKT. NO.	NO. OF POLES	TRIP AMPS	VOLT AMPS	LOAD	CKT. NO.	NO. OF POLES	TRIP AMPS	VOLT AMPS	LOAD		
1	2	20	860	GENESIS FOUNTAIN (GF) VIA BUCK	2	1	25	2000	AQUASTAR LIGHTING (AF LTG)		
3	-	-	860	BOOST XFMR	4	1	20	180	MIR CONTROLLER		
5	1	-	-	SPACE	6	1	-	-	SPACE		
7	1	-	-	SPACE	8	1	-	-	SPACE		
9	1	-	-	SPACE	10	1	-	-	SPACE		
11	1	-	-	SPACE	12	1	-	-	SPACE		
13	1	-	-	SPACE	14	1	-	-	SPACE		
15	1	-	-	SPACE	16	1	-	-	SPACE		
17	1	-	-	SPACE	18	1	-	-	SPACE		

ALL BREAKERS SHALL HAVE A MINIMUM OF 10,000 A.I.C. SYMMETRICAL AT 240 VOLTS

LIGHTING @ 125% = 2,500 VA
 FOUNTAINS @ 100% = 1,720 VA
 MIR CONTROLLER @ 100% = 180 VA
 TOTAL = 4,400 VA (12 AMPS)



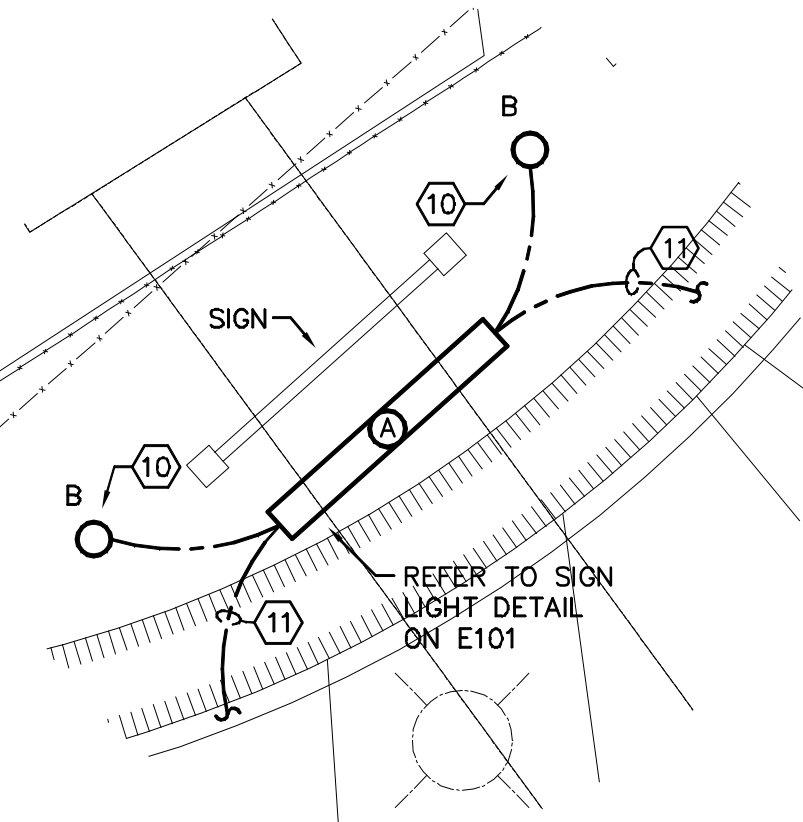
ENCLOSURE ELEVATION
 SCALE: 3/4"=1'-0" /13153



ELECTRICAL RISER DIAGRAM
 SCALE: NTS /13153

RISER NOTES:

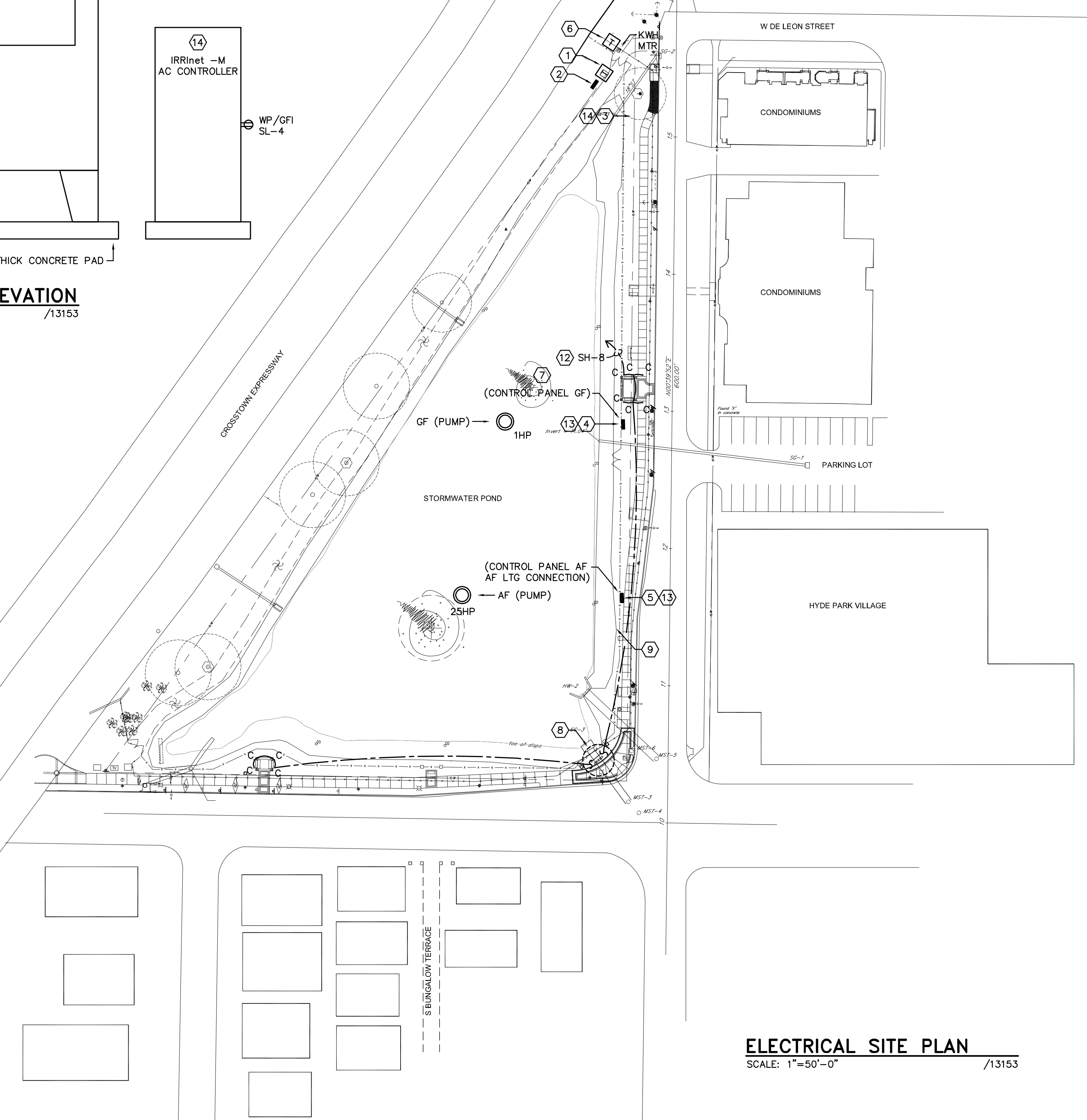
- [100SE] - 100 AMP SERVICE LATERAL. 1 1/2" CONDUIT WITH 4 #3.
- [SERVGN] - 1 #8 SERVICE GROUNDING ELECTRODE GROUND AND BONDED IN ACCORDANCE WITH THE NATIONAL ELECTRIC CODE 250, PART III.
- [100] - 100 AMP 3P, 4W FEEDER - 1 1/2" CONDUIT WITH 4 #3 AND 1 #8 EQUIPMENT GROUND.
- [25] - 25 AMP 3P, 4W FEEDER - 3/4" CONDUIT WITH 3 #10 AND 1 #10 EQUIPMENT GROUND.
- [60] - 60 AMP 3P, 4W FEEDER - 1" CONDUIT WITH 4 #6 AND 1 #8 EQUIPMENT GROUND.
- [XFMGND] - 1 #8 TO MAIN SERVICE GROUND.



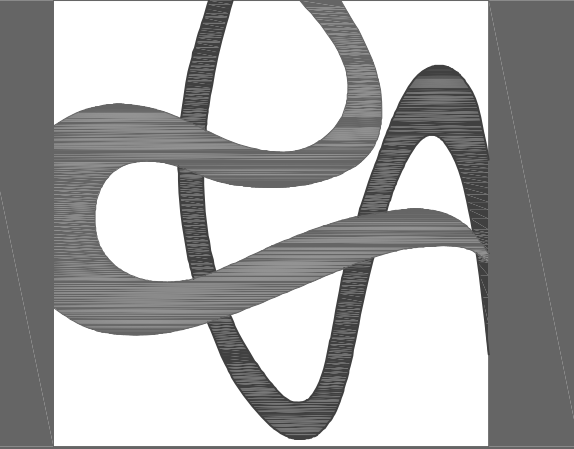
ENLARGED SIGN DETAIL
 SCALE: NTS /13153

KEYED NOTES:

- (1) EXISTING TRANSFORMER.
- (2) EXISTING DISTRIBUTION CABINET FOR CROSSTOWN LIGHTING.
- (3) NEW DISTRIBUTION EQUIPMENT, MOUNTED IN NEW NEMA 3R ENCLOSURE, REFER TO RISER DIAGRAM.
- (4) GENESIS FOUNTAIN CONTROL PANEL, COMPLETE WITH CORD TO CONNECT REMOTE PUMP.
- (5) AQUASTAR FOUNTAIN CONTROL PANEL, COMPLETE WITH CORD TO CONNECT REMOTE PUMP. CONTROL PANEL HAS TERMINAL BLOCK CONNECTION FOR AF LTG.
- (6) NEW PAD MOUNTED TRANSFORMER.
- (7) INSTALL SQUARE-D 250SV43B BUCK BOOST TRANSFORMER TO INCREASE VOLTAGE 10% FOR 230 VOLT SINGLE PHASE FOUNTAIN PUMP "GF". TRANSFORMER SHALL BE NEMA 3R RATED AND MOUNTED TO 4" SQUARE CONCRETE PEDISTAL @ 24" AFF. TRANSFORMER/PEDISTAL SHALL BE ADJACENT TO CONTROL PANEL GF.
- (8) REFER TO ENLARGED SIGN DETAIL ON THIS DRAWING.
- (9) REMOVE EXISTING FOUNTAIN PUMP CONTROL PANEL AND ASSOCIATED METER AND SECONDARY BACK TO UTILITY POLE.
- (10) MOUNT AT BASE OF PALM TREE TO ILLUMINATE PALM TREE.
- (11) TIE INTO AND CONTROL WITH TYPE C FIXTURES.
- (12) BREAK CIRCUIT THROUGH CITY OF TAMPA'S CONTROLLER FOR CONTROL. COORDINATE WITH THE CITY.
- (13) CONTROL WITH CITY OF TAMPA'S CONTROLLER. COORDINATE WITH THE CITY. PROVIDE ALL REQUIRED CONTROL WIRING AND CONDUIT. MOUNT DISCONNECTING MEANS ADJACENT TO 4" SQUARE CONCRETE PEDISTAL @ 24" AFF.
- (14) CITY OF TAMPA'S CONTROLLER. COORDINATE EXACT LOCATION OF RECEPTACLE WITH CITY OF TAMPA.



ELECTRICAL SITE PLAN
 SCALE: 1"=50'-0" /13153



SWANN AVENUE FOUNTAIN PARK

CITY OF TAMPA
 PUBLIC WORKS
 DEPARTMENT
 &
 HYDE PARK
 NEIGHBORHOOD
 ASSOCIATION

MICHAEL WOMACK P.E. 49040

NOTIFY LANDSCAPE ARCHITECT IMMEDIATELY IN EVENTS OF DISCREPANCIES, OMISSIONS, AND/OR CONFLICTS IN THE DRAWINGS OR SPECIFICATIONS. THE CONTRACTOR IS NOT AUTHORIZED TO SCALE THE DRAWINGS. ALL QUESTIONS IN REFERENCE TO CONTRACT DOCUMENTS SHALL BE IMMEDIATELY DIRECTED TO THE LANDSCAPE ARCHITECT.

DCA PROJECT NO.: 13-005
 DRAWN BY: DS
 CHECKED BY: RGE
 CAD File:

100% CONSTRUCTION DOCUMENTS

Description 2014-05-27 00/00/00

REVISIONS:

Drawing Title:

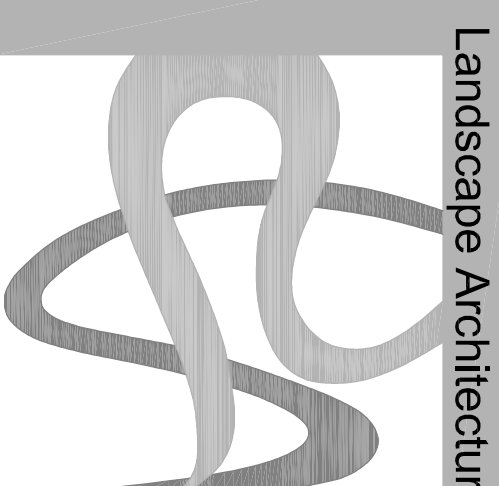
ELECTRICAL SITE PLAN

Drawing No.:

E102

D.B. JOB #13153

DIAMONDBACK ENGINEERING
 1801 North Himes Avenue
 Tampa, Florida 33607
 Tel: (813) 350-0880 * Fax: (813) 350-0883
 REG. NO. EB9758



Urban | Environmental Design

**DAVID CONNER
AND ASSOCIATES**

100 Madison St. Suite 200 • Tampa, FL 33602
Tel: (813)258-1997 • Facsimile: (813)254-4194
LIC0000319 • LAM001327

PROFESSIONAL OF RECORD:
DAVID CONNER
FLORIDA LICENSE LANDSCAPE ARCHITECT
0001327

**SWANN AVENUE
FOUNTAIN PARK**

CITY OF TAMPA
PUBLIC WORKS
DEPARTMENT
**HYDE PARK
&
NEIGHBORHOOD
ASSOCIATION**

NOTIFY LANDSCAPE ARCHITECT IMMEDIATELY IN EVENTS OF OVERTAKING, OMISSIONS, AND/OR CONFLICTS IN THE DRAWINGS. THE ARCHITECT'S WORK IS AUTHORIZED TO SCALE THE DRAWINGS. ALL QUESTIONS IN REGARDS TO THE DRAWINGS SHOULD BE IMMEDIATELY DIRECTED TO THE LANDSCAPE ARCHITECT.

DCA PROJECT NO.: 13-005
DRAWN BY: JS/DC
CHECKED BY: DC
CADD FILE:

**100%
CONSTRUCTION
DOCUMENTS**

2014-05-27

REVISIONS:

Drawing Title:

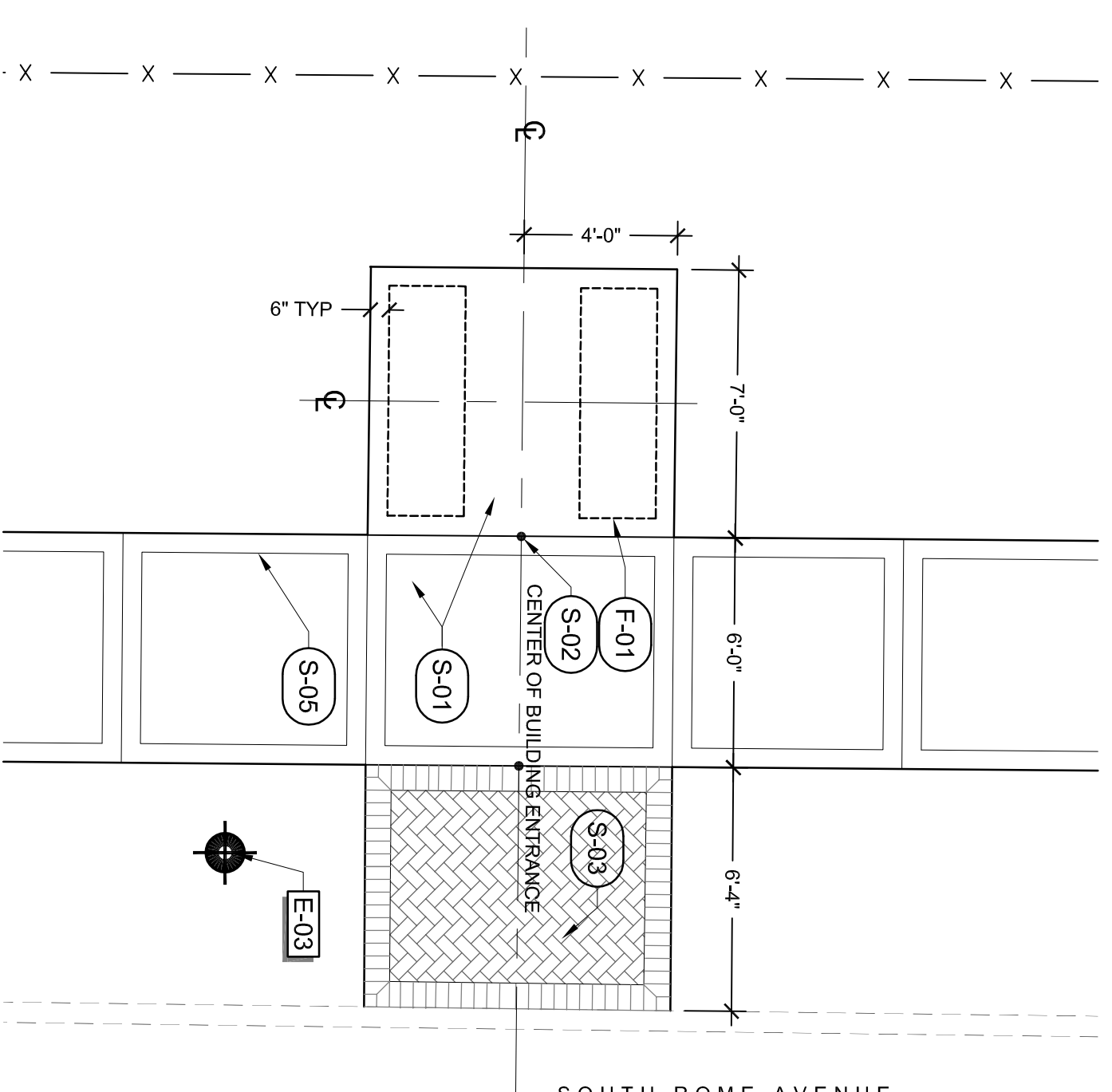
**HARDSCAPE
ENLARGEMENT
PLANS AND
DETAILS**

Drawing No.:

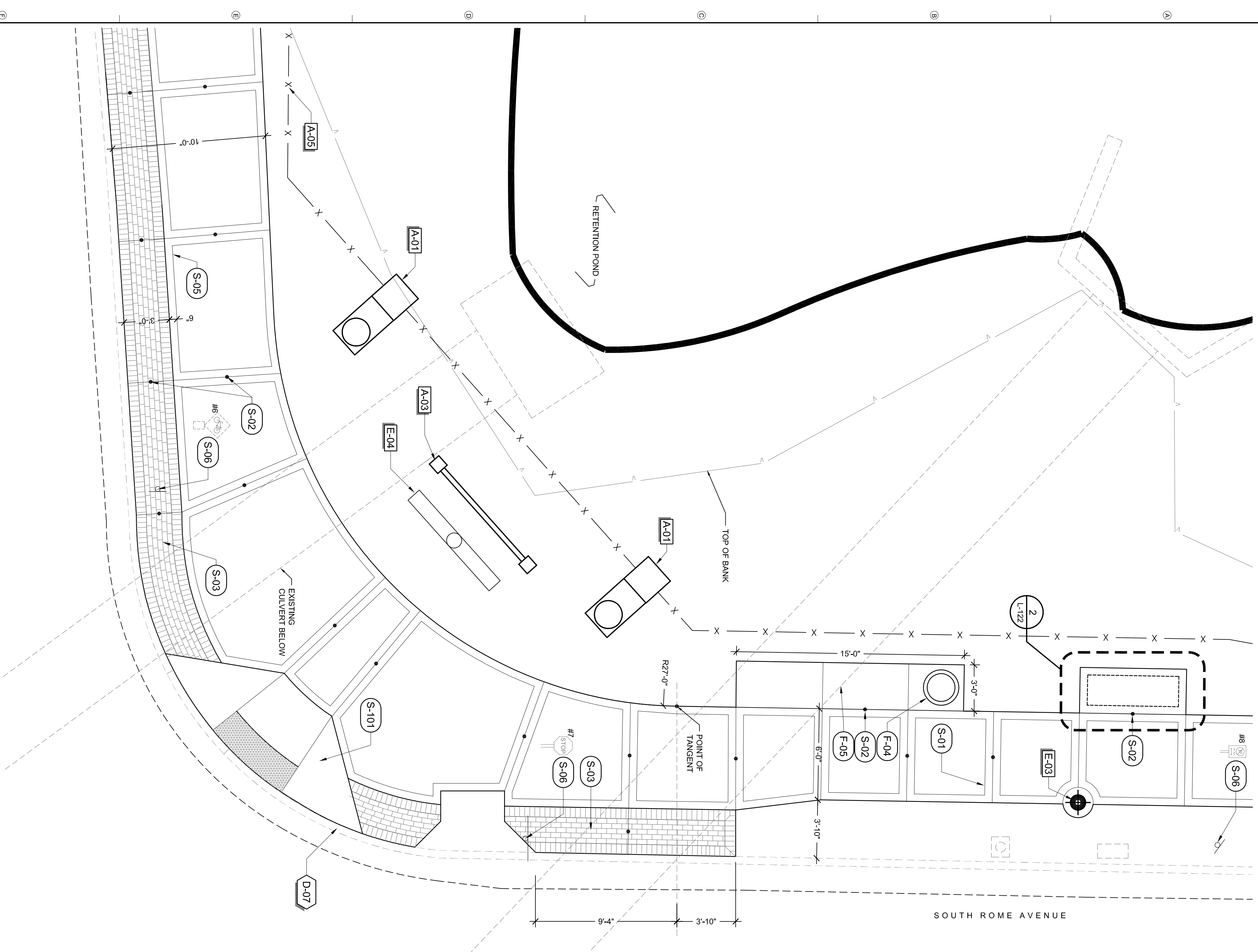
L120

REFERENCE NOTES SCHEDULE

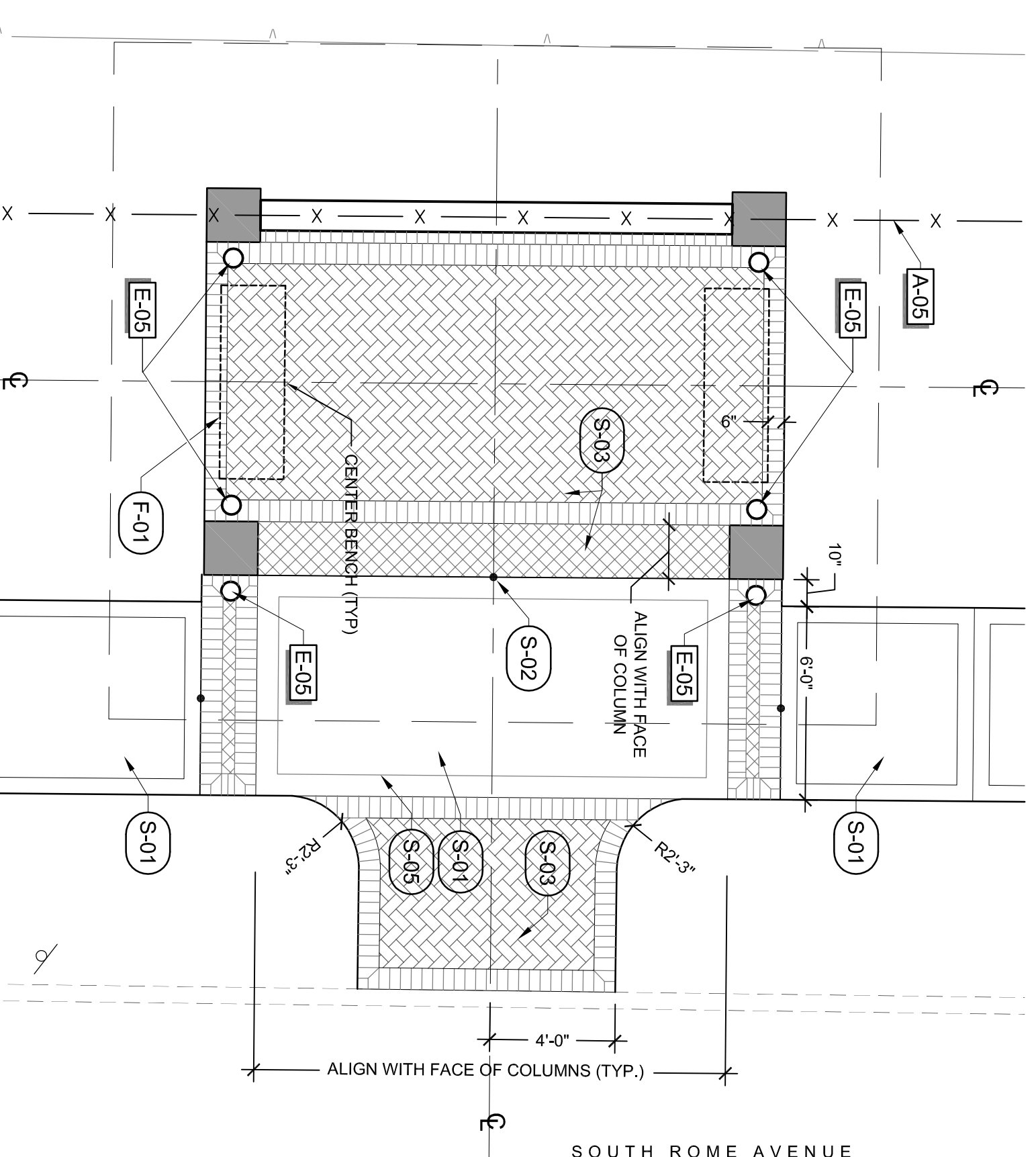
SYMBOL	ARCHITECTURAL DESCRIPTION
A-01	Brick/Stone Pier and Urn - See Architectural Plans
A-02	Swann Avenue Pavilion - See Architectural Plans
A-03	Corner Sign - See Architectural Plans
A-04	Bench and Backdrop Plans - See Architectural Plans
A-05	New Decorative Steel Fencing - See Architectural Plans
D-07	DEMOLITION
E-03	Refer to CMI drawings for curb removal
E-04	ELECTRICAL
E-05	TECO streetlights - Contractor to coordinate w/ TECO
E-06	Lighting Fixture - See Electrical Plans
E-07	Flush Mounted Well Light - See Electrical Plans
F-01	FURNISHINGS
F-02	Bench - See Sheet L122/Detail #2 - owner provided contractor installed
F-03	Special Bench Provided By Owner - owner provided contractor installed
F-04	Trash Receptacle - See Sheet L122/Detail #3 - owner provided contractor installed
F-05	Concrete Pad Area For Magazine Racks - Racks NIC
S-01	SITE IMPROVEMENTS
S-02	Concrete Sidewalk - See Sheet L121/Detail #3 for Finish Information, Refer to CMI for other information
S-03	Expansion Joint - See CMI Plans
S-04	Unit Paver on Concrete Base - See Sheet L121/Detail #4
S-05	Troled Joint to Match Hyde Park Typical
S-06	Proposed relocated sign location - refer to number reference from demolition plans. See specifications for hardware modifications.
S-10	Accessible Curb Ramp at Swann and Rome - See Civil Plans



2 SEATING @ 600 ROME AVE BUILDING - ENLARGEMENT AREA
1/4" = 1'-0"



1 SWANN AVENUE & ROME AVENUE INTERSECTION - ENLARGEMENT AREA
1/4" = 1'-0"



3 ROME AVENUE PAVILION SEATING AREA - ENLARGEMENT PLAN
1/4" = 1'-0"

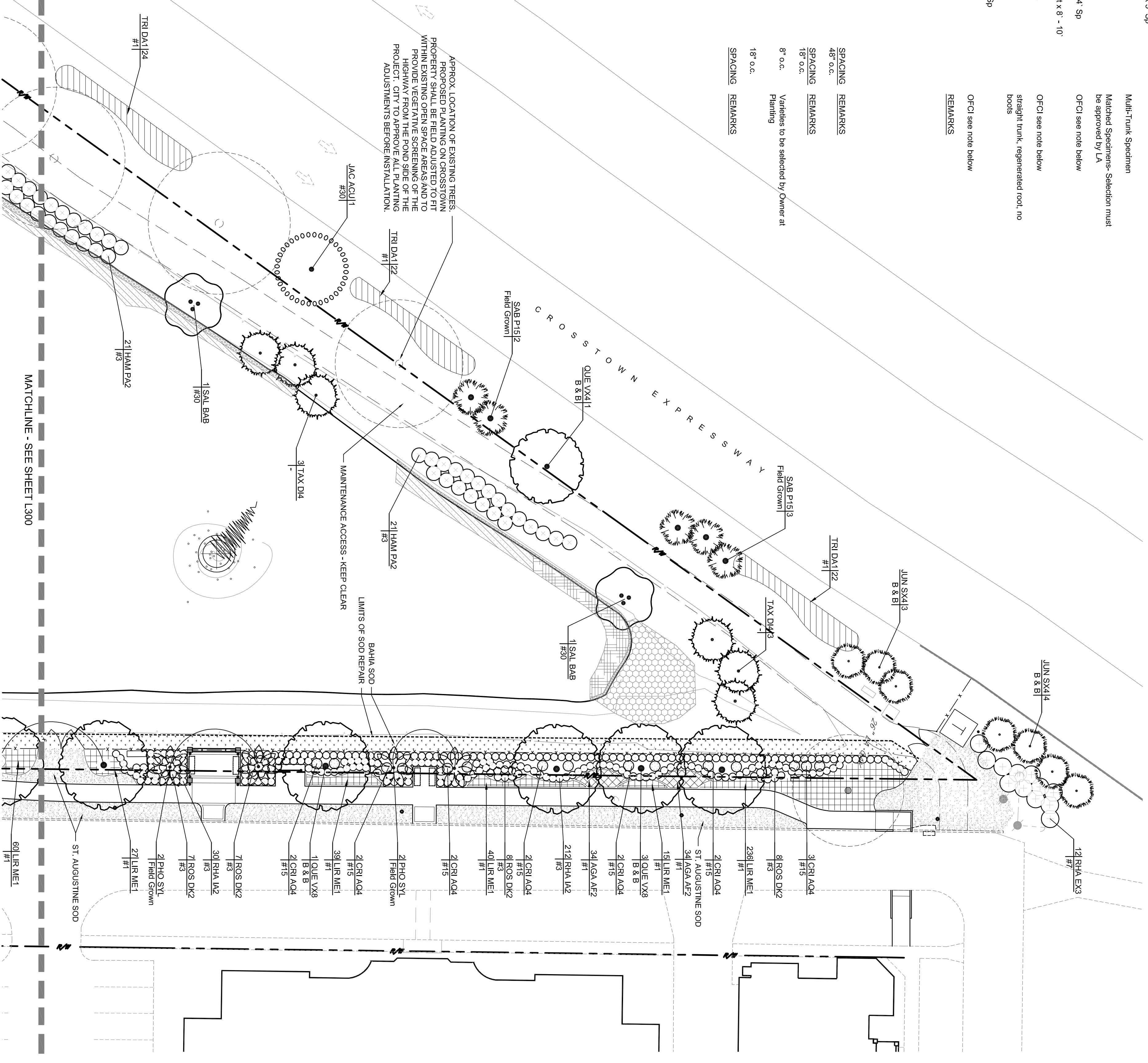
PLANT SCHEDULE

TREES	QTY	BOTANICAL NAME	COMMON NAME	CONT	CAL	SIZE	REMARKS
JAC ACU	2	Jacaranda mimosifolia	Jacaranda	#15	4'Cal	9' - 11' Ht	
JUN SX4	7	Juniperus silicicola	Southern Red Cedar	B & B	4'Cal	8' - 10' Ht x 5' Sp	
LAG MU3	4	Lagerstroemia indica 'Muskegee'	Muskegee Crape Myrtle	#45		10' - 12' Ht	Multi-Trunk Specimen
PHO SYL	8	Phoenix syvestris	Wild Date Palm	Field Grown		15' CT	Matched Specimens- Selection must be approved by UA
QUE W2	2	Quercus virginiana	Southern Live Oak	B & B	10" Cal	32' Ht x 24' Sp	OFICI see note below
QUE VX4	2	Quercus virginiana	Southern Live Oak	B & B	4'Cal	16' - 18' Ht x 8' - 10'	OFICI see note below
QUE VX8	9	Quercus virginiana	Southern Live Oak	B & B	8" Cal	26' - 28' Ht	OFICI see note below
SAB P15	5	Sabal palmetto	Cabbage Palm	Field Grown	N/A	15' CT	slight trunk, regenerated root, no buds
SAL BAB	3	Salix bbylonica	Weeping Willow	#15	1.75'Cal	8' Ht x 6' Sp	
TAX D14	9	Taxodium distichum	Bald Cypress	-			OFICI see note below
SHRUBS	QTY	BOTANICAL NAME	COMMON NAME	CONT	SIZE	REMARKS	
CRI A04	29	Criminum asaticum 'Queen Emma'	Queen Emma Crinum Lily	#15	48" Ht x 36" Sp		
HAM P12	59	Hamelia patens	Fire Bush	#3	24" Ht x 24" Sp		
RHA I12	577	Rhaphelepis indica 'Alba'	Dwarf Indian Hawthorn	#3	15" Ht x 15" Sp		
RHA EX3	12	Rhapis excotha	Lady Palm	#7	3' - 4' Ht x 3' - 3.5' Sp		
ROS DK2	30	Rosa x Double Knockout'	Knockout Rose	#3	18" Ht x 18" Sp		
SHRUB AREAS	QTY	BOTANICAL NAME	COMMON NAME	CONT	SIZE	REMARKS	
TRI D11	112	Tripsolan dactyloides	Falanchee Grass	#1	15" Ht x 10" Sp		SPACING 48' o.c.
GROUND COVERS	QTY	BOTANICAL NAME	COMMON NAME	CONT	SIZE	REMARKS	
AGA AF2	179	Agapanthus africanus 'Blue'	Blue Lily of the Nile	#1	15" Ht x 15" Sp		SPACING 18' o.c.
ANN U1L	228	Annalis	Annalis	6" pot	8" OC		8" o.c. Variables to be selected by Owner at Planting
LIR ME1	619	Liriope muscari 'Emerald Goddess'	Lily Turf	#1	12" Ht x 12" Sp		18" o.c.
SOOSEED	QTY	BOTANICAL NAME	COMMON NAME	CONT	SIZE	REMARKS	
BAY A1B	4,435 sf	Bahia 'Yaguire'	Argentine Bahia Grass	sod			SPACING 18' o.c.
STE AUG	5,115 sf	Stenotaphrum secundatum 'Floriam'	'Floriam' St. Augustine Sod	sod			SPACING 18' o.c.

LITTORAL PLANT SCHEDULE

LITTORAL PLANT	QTY	BOTANICAL NAME	CONT	SIZE
Pink Mully Grass	46	Muhlenbergia capillans	#1	15" Ht x 10" Sp
Fire Flag	240	Thalia geniculata	#1	24" Ht x 10" Sp
Carina	441	Carina floccida	#1	15" Ht x 10" Sp
Pinksweed	500	Portulandra cordata	#1	12" Ht x 6" Sp

NOTE:
 OFCI shall indicate plant material that has been purchased by the owner and is to be installed by the contractor. The contractor shall arrange for delivery, acceptance, installation and warranty in accordance with the specifications. For the purposes of bidding, delivery and warranty cost, the plant materials shall be provided by the following suppliers:
 • (9) cypress trees (5 ea @ 18" - 20" Ht/ B&B and 4 ea @ 12-14" Ht. B&B have been purchased by Warren Trees in Plant City Florida.)
 • (2) 10" live oak trees will be purchased by a grower in or near Morrison Florida.
 • (9) 3" live oaks trees will be purchased by a grower in or near Morrison Florida.



DAVID CONNER AND ASSOCIATES
 Urban | Environmental Design

100 Madison St, Suite 200 - Tampa, FL 33602
 Tel: (813)256-1997 - Fax: (813)254-4194
 LCO0000319 - LNO001327

PROFESSIONAL OF RECORD:
 DAVID CONNER
 FLORIDA LICENSE LANDSCAPE ARCHITECT
 0001327

SWANN AVENUE FOUNTAIN PARK
 CITY OF TAMPA PUBLIC WORKS DEPARTMENT
 HYDE PARK & NEIGHBORHOOD ASSOCIATION

DCA PROJECT NO.: 13-005
 DRAWN BY: JGDG
 CHECKED BY: DC
 CAD FILE:

NOTIFY LANDSCAPE ARCHITECT IMMEDIATELY IN WRITING OF ANY DISCREPANCIES OR OMISSIONS IN THESE DRAWINGS OR SPECIFICATIONS. THE CONTRACTOR IS NOT AUTHORIZED TO SCALE THE DRAWINGS. ALL QUESTIONS IN REGARD TO THESE DRAWINGS OR SPECIFICATIONS SHOULD BE IMMEDIATELY DIRECTED TO THE LANDSCAPE ARCHITECT.

100%
 CONSTRUCTION DOCUMENTS
 2014-05-27

REVISIONS:

Drawing Title:
PLANTING PLAN

Drawing No.:
L301

Landscape Architecture

CONTRACT 14-C-00043; HYDE PARK GATEWAY IMPS. - Pre-Bid Conf. 06/24/2014

E-Mail to Register as a Plan Holder and E-Mail All Questions to; ContractAdministration@tampagov.net

Sign-In Sheet Please Print

City of Tampa, Contract Administration Department

	Name	Organization	E-Mail OR Phone
1	Jim Greiner, PE	Tampa Contract Administration Dept.	Jim.Greiner@tampagov.net
2	Thomas A. Hester	Contract Administration	thomas.hester@tampagov.net
3	Daniel V Hoch	Certus Builders	dchumler@certusbuilders.com
4	FRED INGRAM	CORNERSTONE SOLUTIONS GROUP	FINGRAM@CORNERSTONE SOLUTIONS GROUP.COM
5	CARLOS SERRANO	PILLAR CONSTRUCTION GROUP	BSUTON@PILLAR GROUP FL .COM
6	Debra Kleet	Kleet Const Inc	DKleet@aol.com
7	PATRICK ERWIN	GREEN CONSTRUCTION TECH	get-gc@bell-south.net
8	José MORALES	CENTRAL FLORIDA LANDSCAPING	813-623-1771
9	ROLANDO LUIS	NELCO DEVELOPMENT	813-3907705 ROLANDO NIELLO CONSTRUCTION.COM
10	Jannet Varon	JVA Construction, Inc	jannet.varon@jvaconstruction.com
11	BARRY DUCKWORTH	Bayshore Contracting	TDSCORP3@Tampa Bay-RR.COM
12	DAVID FLORES	FLORES CO	DAVID@FLORESCO.COM
13			
14			
15			
16			
17			
18			
19			
20			
21			
22			
23			
24			
25			
26			
27			
28			
29			
30			
31			
32			
33			
34			
35			
36			