



# CITY OF TAMPA

Bob Buckhorn, Mayor

CONTRACT ADMINISTRATION DEPARTMENT

Michael W. Chucran, Director

## ADDENDUM NO. 2

**DATE: August 25, 2016**

Contract 16-C-00021; Harbour Island Pumping Station Rehabilitation

Bidders on the above referenced project are hereby notified that the following addendum is made to the Contract Documents. BIDS TO BE SUBMITTED SHALL CONFORM TO THIS NOTICE.

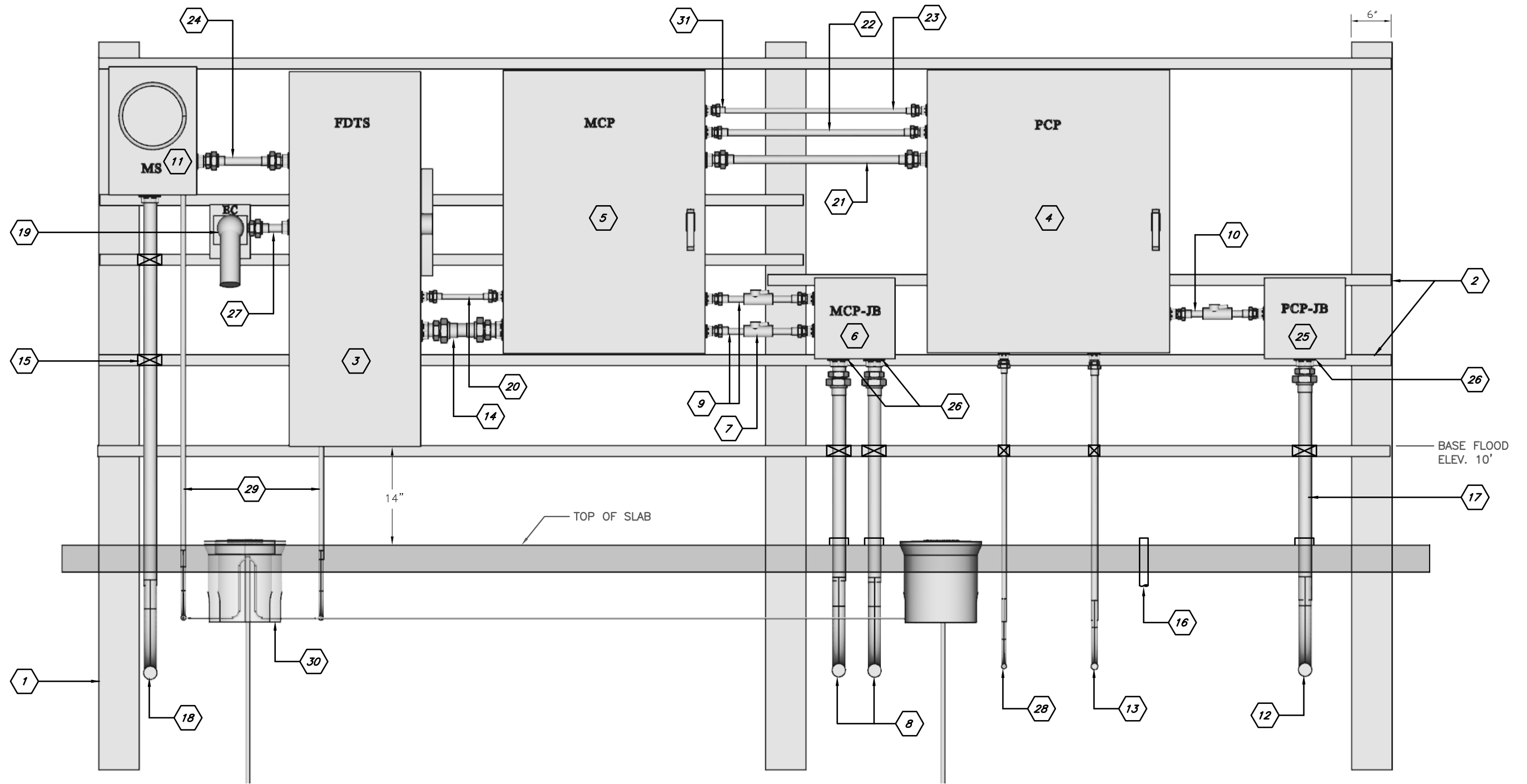
Item 1: Replace plan sheet nos. E-2, E-4 and E-5 with the attached plan sheet nos. E-2, E-4 and E-5. Sheets are revised by correcting the Scale.

All other provisions of the Contract Documents and Specifications not in conflict with this Addendum shall remain in full force and effect. Questions are to be e-mailed to [ContractAdministration@tampagov.net](mailto:ContractAdministration@tampagov.net).

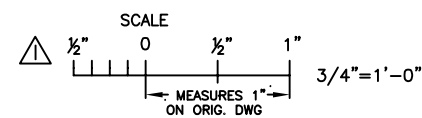
*Jim Greiner*

\_\_\_\_\_  
Jim Greiner, P.E., Contract Management Supervisor

User: ss13 Drawing Name: K:\WasteWater Projects\Harbour Island PS\Design\Plans\Drafting\DWG\Harbour Island Electrical Equipment Lineup.dwg  
 Layout: Aug 24, 2016 - 3:06pm



ELECTRICAL EQUIPMENT LINE UP FRONT-VIEW



NOTE: SEE KEYED NOTES ON SHEET E6.

ROMAN KORCHAK, P.E., #42626  
 ELECTRICAL DIVISION HEAD  
 WASTEWATER DEPARTMENT

No.	DATE	REVISIONS
3		
2		
1	8/24/16	REVISION I

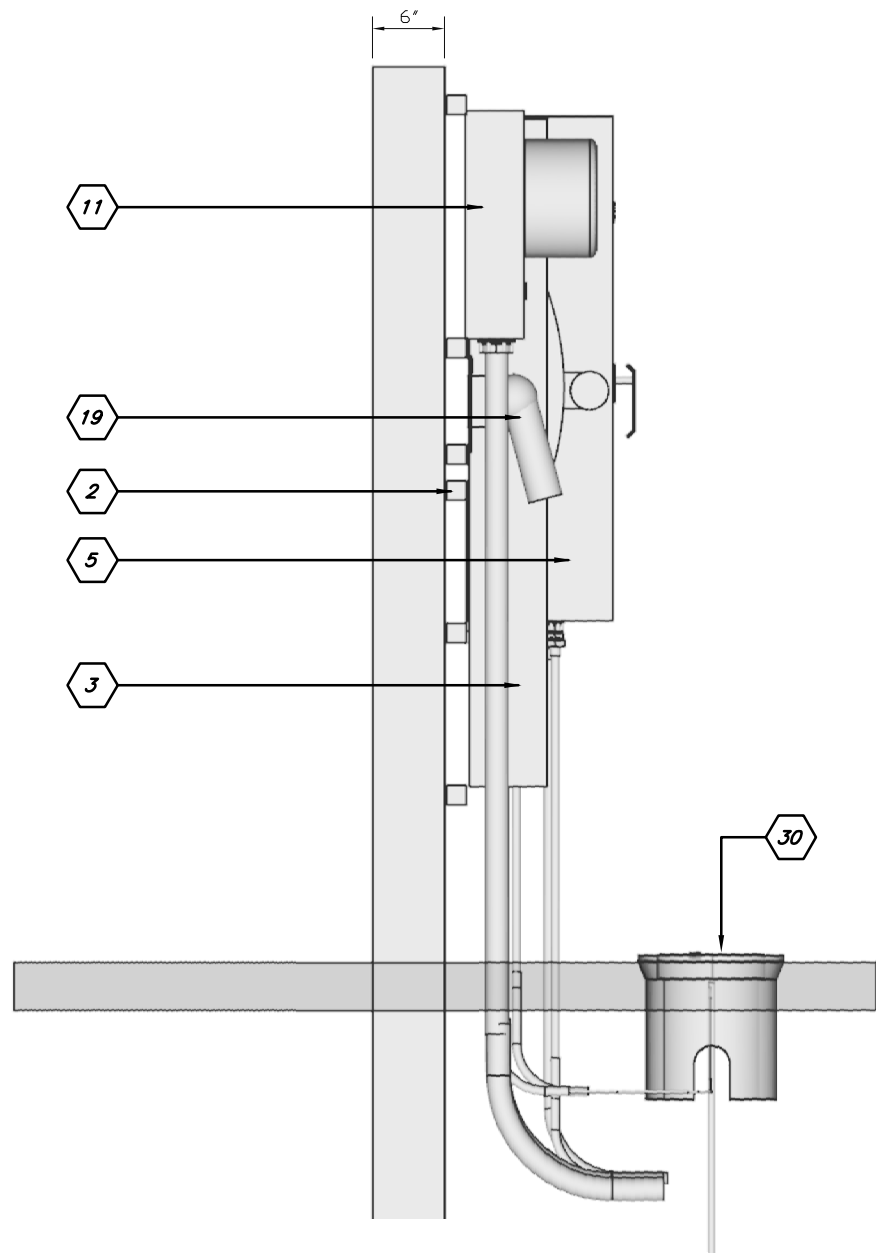
DES: LRG  
 DRN: RDK/JHJ  
 CKD:  
 DATE: 6/30/16

CITY of TAMPA  
 WASTEWATER DEPARTMENT

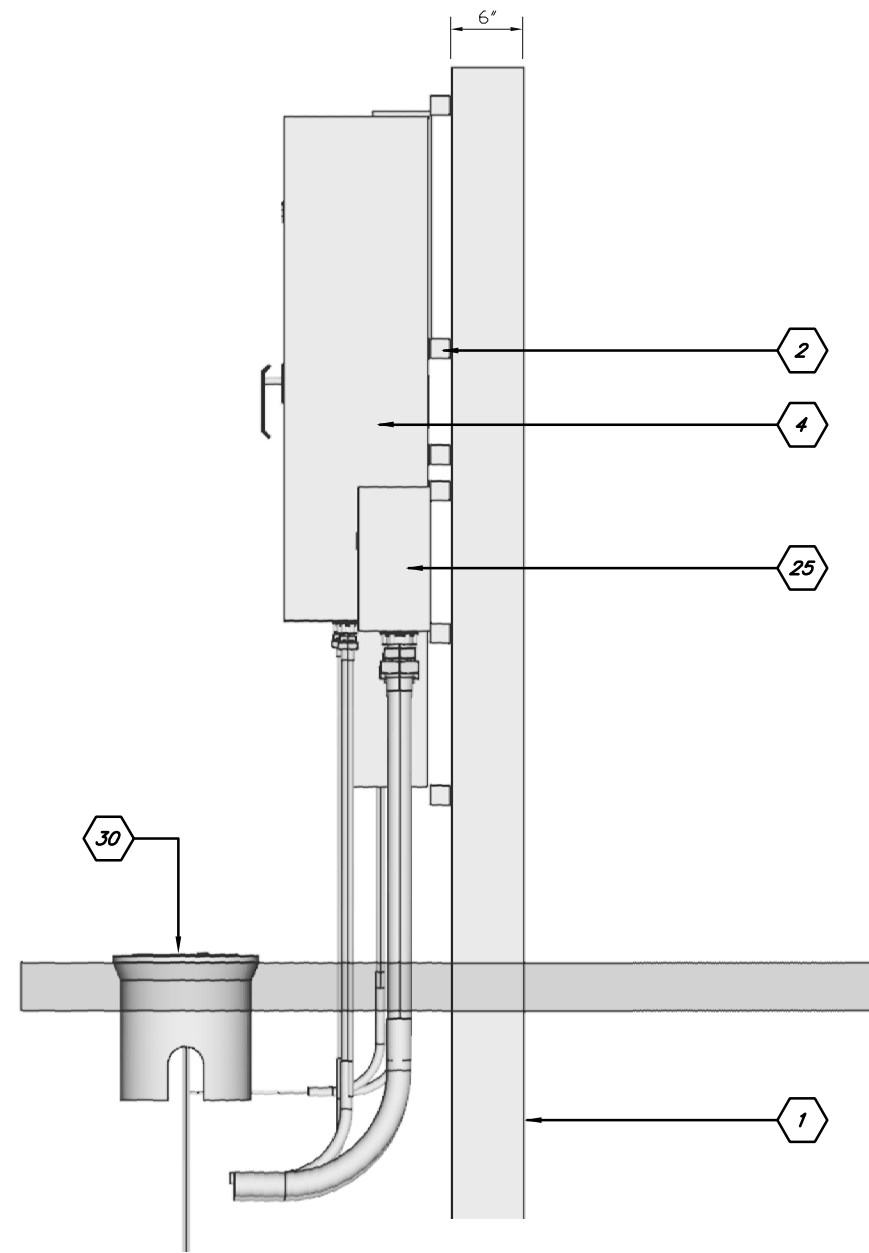
HARBOUR ISLAND PS REHABILITATION  
 ELECTRICAL EQUIPMENT LINE UP FRONT-VIEW

W.O. 0000  
 SHEET  
**E2**

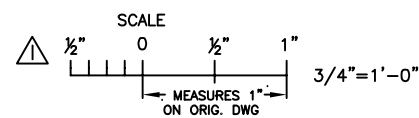
User: ss13 Drawing Name: K:\WasteWater Projects\Harbour Island PS\Design\Plans\Drafting\DWG\Harbour Island Electrical Equipment Lineup.dwg Layout: Aug 24, 2016 - 3:06pm



LEFT SIDE VIEW



RIGHT SIDE VIEW



**NOTE:** SEE KEYED NOTES ON SHEET E6.

ROMAN KORCHAK, P.E., #42626  
ELECTRICAL DIVISION HEAD  
WASTEWATER DEPARTMENT

No.	DATE	REVISIONS
3		
2		
△	8/24/16	REVISION 1

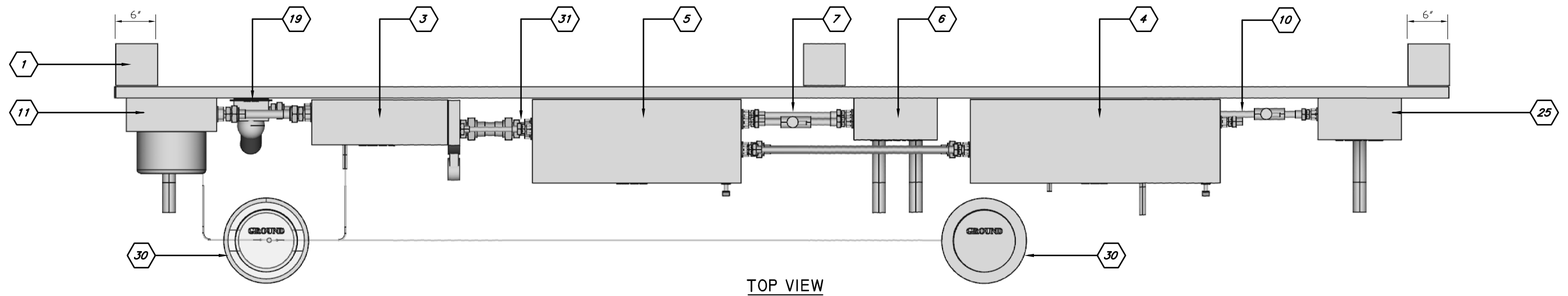
DES: LRG  
DRN: RDK/JHJ  
CKD:  
DATE: 6/30/16

**CITY of TAMPA**  
WASTEWATER DEPARTMENT

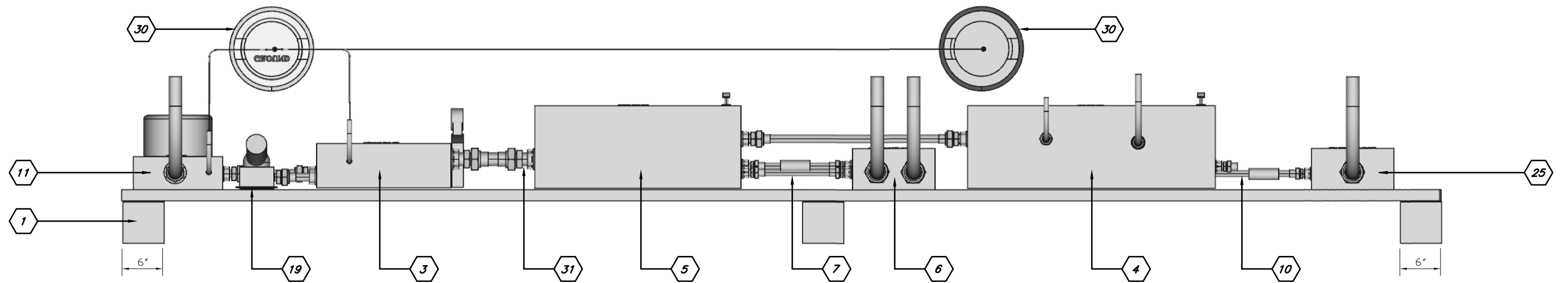
HARBOUR ISLAND PS REHABILITATION  
ELECTRICAL EQUIPMENT LINE UP  
SIDE VIEWS

W.O. 0000  
SHEET  
**E4**

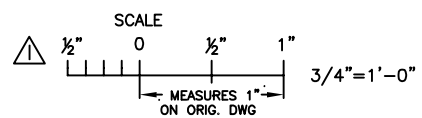
User: ss13 Drawing Name: K:\WasteWater Projects\Harbour Island PS\Design Plans\Drafting\DWG\Harbour Island Electrical Equipment Lineup.dwg Layout: Aug 24, 2016 - 3:06pm



TOP VIEW



BOTTOM VIEW



**NOTE:** SEE KEYED NOTES ON SHEET E6.

ROMAN KORCHAK, P.E., #42626  
ELECTRICAL DIVISION HEAD  
WASTEWATER DEPARTMENT

No.	DATE	REVISIONS
3		
2		
1	8/24/16	REVISION I

DES: LRG  
DRN: RDK/JHJ  
CKD:  
DATE: 6/30/16

**CITY of TAMPA**  
WASTEWATER DEPARTMENT

HARBOUR ISLAND PS REHABILITATION  
ELECTRICAL EQUIPMENT LINE UP  
TOP & BOTTOM VIEWS

W.O. 0000  
SHEET  
**E5**