



CITY OF TAMPA

Bob Buckhorn, Mayor

CONTRACT ADMINISTRATION DEPARTMENT

Michael W. Chucran, Director

ADDENDUM NO. 3

DATE: August 25, 2016

Contract 16-C-00021; Harbour Island Pumping Station Rehabilitation

Bidders on the above referenced project are hereby notified that the following addendum is made to the Contract Documents. BIDS TO BE SUBMITTED SHALL CONFORM TO THIS NOTICE.

Item 1: Replace plan sheet nos. E-2, E-4 and E-5 with the attached plan sheet nos. E-2, E-4 and E-5.

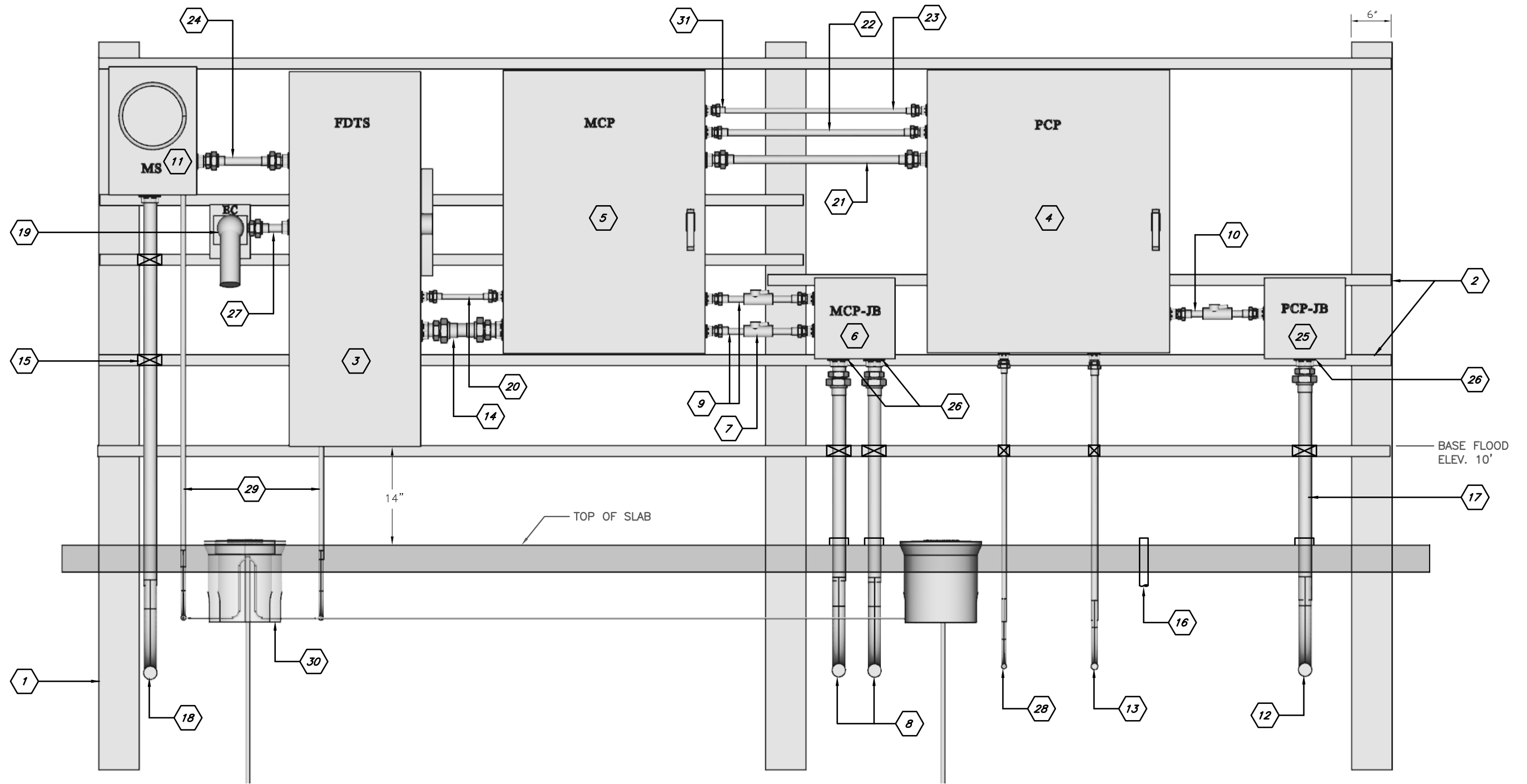
Plans sheets issued to correct the previous drawing scales.

All other provisions of the Contract Documents and Specifications not in conflict with this Addendum shall remain in full force and effect. Questions are to be e-mailed to ContractAdministration@tampagov.net.

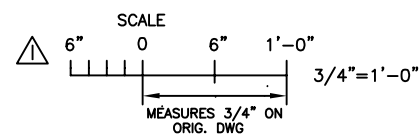
Jim Greiner

Jim Greiner, P.E., Contract Management Supervisor

User: ss13 Drawing Name: K:\WasteWater Projects\Harbour Island PS\Design\Plans\Drafting\DWG\Harbour Island Electrical Equipment Lineup.dwg
 Layout: Aug 24, 2016 - 3:28pm



ELECTRICAL EQUIPMENT LINE UP FRONT-VIEW



NOTE: SEE KEYED NOTES ON SHEET E6.

ROMAN KORCHAK, P.E., #42626
 ELECTRICAL DIVISION HEAD
 WASTEWATER DEPARTMENT

No.	DATE	REVISIONS
3		
2		
1	8/24/16	REVISION I

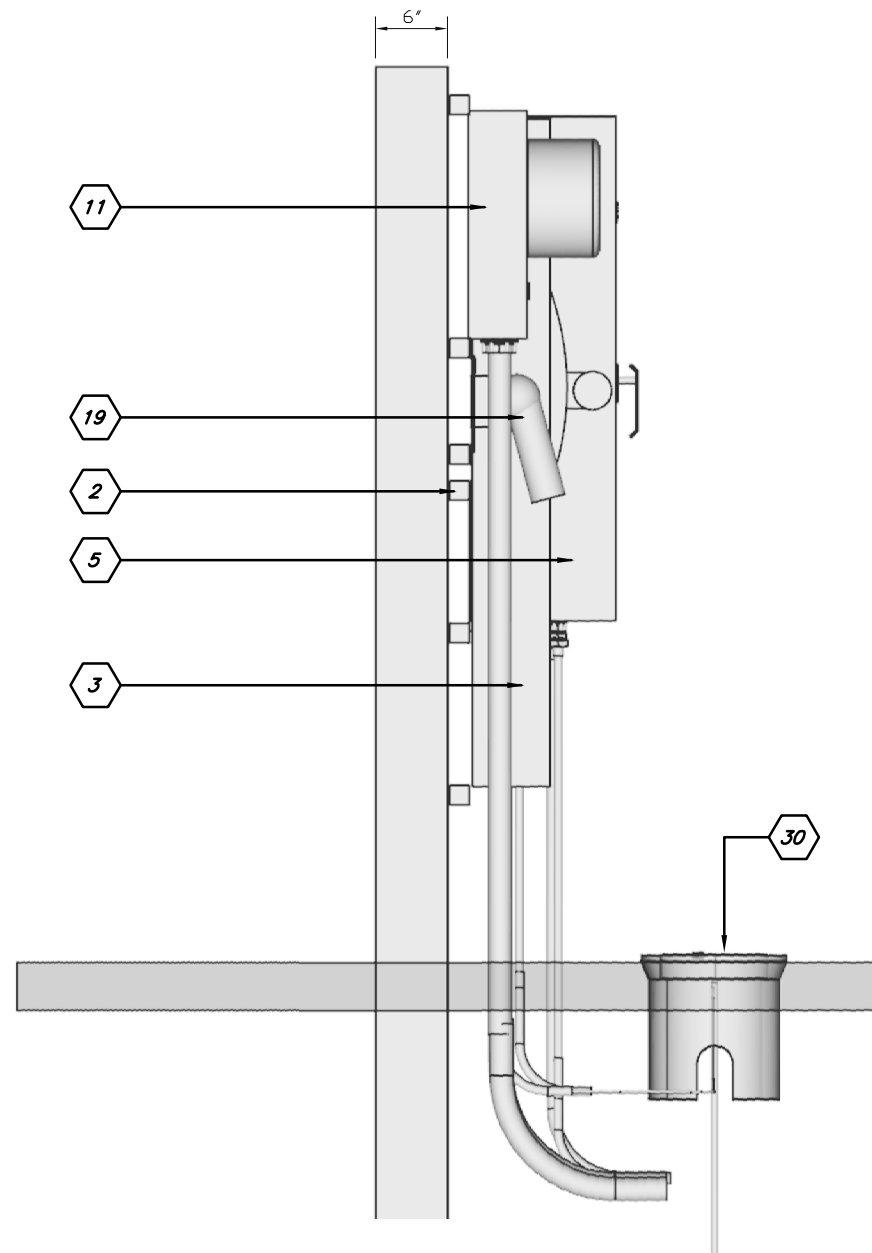
DES: LRG
 DRN: RDK/JHJ
 CKD:
 DATE: 6/30/16

CITY of TAMPA
 WASTEWATER DEPARTMENT

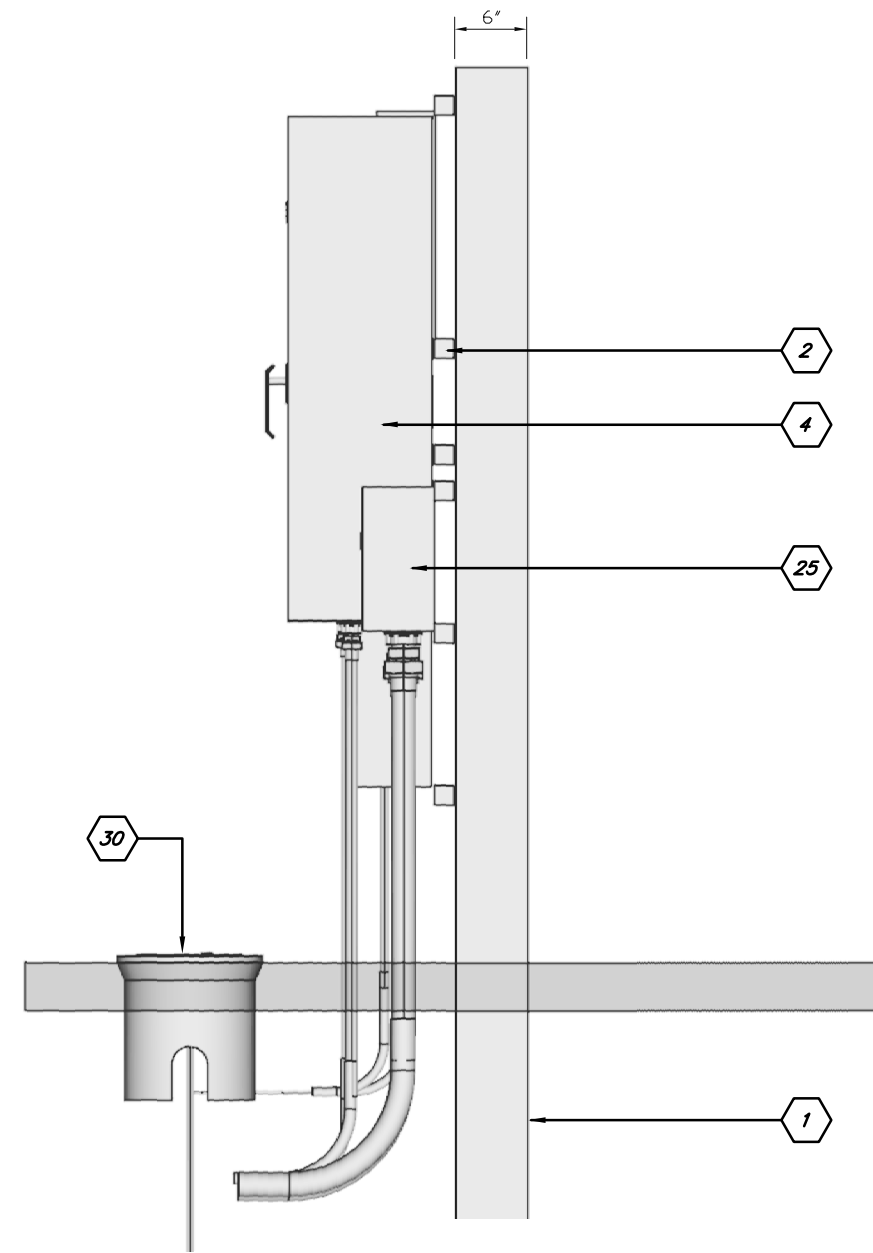
HARBOUR ISLAND PS REHABILITATION
 ELECTRICAL EQUIPMENT LINE UP FRONT-VIEW

W.O. 0000
 SHEET
E2

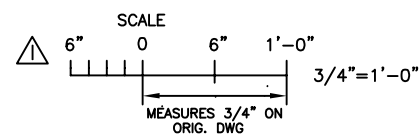
User: ss13 Drawing Name: K:\WasteWater Projects\Harbour Island PS\Design\Plans\Drafting\DWG\Harbour Island Electrical Equipment Lineup.dwg Layout: Aug 24, 2016 - 3:28pm



LEFT SIDE VIEW



RIGHT SIDE VIEW



NOTE: SEE KEYED NOTES ON SHEET E6.

ROMAN KORCHAK, P.E., #42626
ELECTRICAL DIVISION HEAD
WASTEWATER DEPARTMENT

No.	DATE	REVISIONS
3		
2		
△	8/24/16	REVISION 1

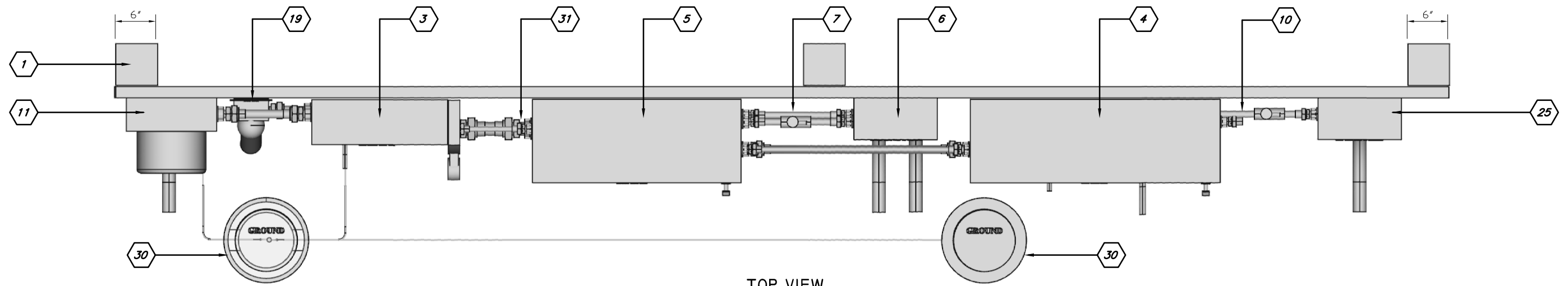
DES: LRG
DRN: RDK/JHJ
CKD:
DATE: 6/30/16

CITY of TAMPA
WASTEWATER DEPARTMENT

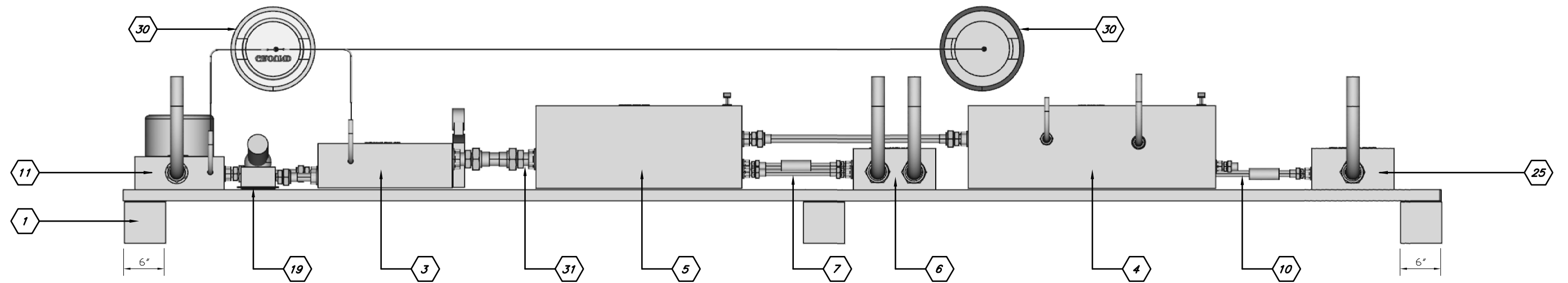
HARBOUR ISLAND PS REHABILITATION
ELECTRICAL EQUIPMENT LINE UP
SIDE VIEWS

W.O. 0000
SHEET
E4

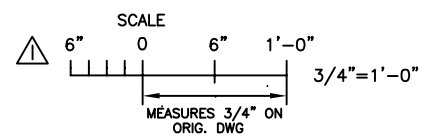
User: ss13 Drawing Name: K:\WasteWater Projects\Harbour Island PS\Design\Plans\Drafting\DWG\Harbour Island Electrical Equipment Lineup.dwg
 Layout: Aug 24, 2016 - 3:28pm



TOP VIEW



BOTTOM VIEW



NOTE: SEE KEYED NOTES ON SHEET E6.

ROMAN KORCHAK, P.E., #42626
 ELECTRICAL DIVISION HEAD
 WASTEWATER DEPARTMENT

No.	DATE	REVISIONS
3		
2		
1	8/24/16	REVISION I

DES: LRG
 DRN: RDK/JHJ
 CKD:
 DATE: 6/30/16

CITY of TAMPA
WASTEWATER DEPARTMENT

HARBOUR ISLAND PS REHABILITATION
 ELECTRICAL EQUIPMENT LINE UP
 TOP & BOTTOM VIEWS

W.O. 0000
 SHEET
E5