

The Enclosed Document Is Provided For Your Convenience.

Please Email ALL Questions:

[MailTo:ContractAdministration@TampaGov.net](mailto:ContractAdministration@TampaGov.net)

Please Let Us Know If You Plan To Bid

City of Tampa
Contract Administration Department
306 E. Jackson St. #280A4N
Tampa, FL 33602
(813)274-8456

GENERAL STRUCTURAL NOTES

SCOPE OF WORK

1. WORK DETAILED ON THE DRAWINGS AND APPLICABLE ITEMS DESCRIBED IN THE GENERAL STRUCTURAL NOTES.

DRAWINGS AND SPECIFICATIONS

1. DO NOT SCALE DRAWINGS FOR DIMENSIONS NOT GIVEN.
2. ADVISE ENGINEER OF DIMENSIONAL DISCREPANCIES.
3. VERIFY ALL EXISTING FIELD CONDITIONS AND DIMENSIONS PRIOR TO COMMENCING CONSTRUCTION.
4. THE CONTRACTOR SHALL PERFORM NO PORTION OF THE WORK AT ANY TIME WITHOUT CONTRACT DOCUMENTS OR, WHERE REQUIRED, APPROVED SHOP DRAWINGS, PRODUCT DATA OR SAMPLES FOR SUCH PORTION OF THE WORK.

CONSTRUCTION SAFETY

1. THESE DRAWINGS DO NOT INCLUDE PROVISIONS TO SATISFY SAFETY REQUIREMENTS. CONTRACTOR IS SOLELY RESPONSIBLE FOR ENSURING SAFETY DURING CONSTRUCTION AND FOR CONFORMANCE TO ALL APPLICABLE OSHA STANDARDS AND OTHER APPLICABLE CODES. JOBSITE VISITS BY ENGINEER SHALL NOT CONSTITUTE APPROVAL, AWARENESS OR LIABILITY FOR ANY HAZARDOUS CONDITIONS.

SHORING AND SUPPORT

1. WHEN REMOVAL OF STRUCTURAL ELEMENTS FOR MODIFICATIONS MAY CAUSE TEMPORARY WEAKNESS, EXCESSIVE DEFLECTIONS OR STRUCTURAL INSTABILITY, SHORING OR OTHER SUITABLE SUPPORTS SHALL BE PROVIDED UNTIL COMPLETION AND ADEQUATE CURING OF MODIFICATIONS.
2. THE CONTRACTOR SHALL SUBMIT CUT SHEETS WITH CERTIFIED CAPACITIES FOR SHORING TO BE USED. SHORING PLANS SHALL BE PREPARED, SIGNED AND SEALED BY AN ENGINEER REGISTERED IN THE STATE OF FLORIDA.

VALUE ENGINEERING

1. ANY CHANGES TO THE STRUCTURE OR DESIGN SHALL HAVE BEEN REVIEWED AND APPROVED IN WRITING BY THE ENGINEER PRIOR TO COMMENCING WORK ON ITEMS AFFECTED.

FIELD MODIFICATIONS

1. ANY CHANGES TO THE STRUCTURE SHALL HAVE BEEN REVIEWED AND APPROVED IN WRITING BY THE ENGINEER PRIOR TO COMMENCING WORK ON ITEMS AFFECTED.
2. ANY CHANGES MADE WITHOUT PRIOR APPROVAL ARE SUBJECT TO REVIEW BY THE ENGINEER. CONTRACTOR SHALL PROVIDE SKETCHES, PHOTOGRAPHS AND WRITTEN DESCRIPTION OF EACH DEVIATION FROM THE PLANS FOR THE ENGINEER'S REVIEW.

BUILDING CODES AND SPECIFICATIONS

1. FLORIDA BUILDING CODE 2010 WITH LATEST UPDATES.
2. MINIMUM DESIGN LOADS FOR BUILDINGS AND OTHER STRUCTURES ASCE 7-10.
3. BUILDING CODE REQUIREMENTS FOR STRUCTURAL CONCRETE ACI 318-08.
4. AISC MANUAL OF STEEL CONSTRUCTION, 13TH EDITION.
5. AWS STRUCTURAL WELDING CODE D1-1.

DESIGN LOADS

1. DEAD LOADS
 - A. TABLE C3-1: MINIMUM DESIGN LOADS, ASCE 7-10

STRUCTURAL STEEL

1. STEEL CHANNELS, ANGLES, PLATES, AND BARS CONFORM TO ASTM A36.
2. ALL WELDS SHALL BE MADE WITH E70 LOW HYDROGEN ELECTRODES, BY QUALIFIED WELDERS AS PER AWS D1.1 REQUIREMENTS.
3. RETURN ALL WELDS AT CORNERS TWICE THE NOMINAL WELD SIZE MINIMUM.
4. ALL STRUCTURAL STEEL SHALL RECEIVE TWO SHOP COATS OF PRIMER PAINT CONFORMING TO THE PERFORMANCE REQUIREMENTS OF FEDERAL SPECIFICATION TT-P-636 OR EQUAL, U.O.N.
5. WELDS NOT OTHERWISE DESIGNATED SHALL BE 1/4 IN. MINIMUM FILLET WELDS.
6. ALL STRUCTURAL STEEL THAT IS EXPOSED TO THE EXTERIOR ENVIRONMENT SHALL BE GALVANIZED AS PER ASTM A123, U.O.N.

NO.	REVISIONS	
	DATE	COMMENTS
1		
2		
3		
4		

HILLSBOROUGH RIVER GIRDER REPAIRS
 CITY OF TAMPA WATER DEPT.
 306 EAST JACKSON STREET
 TAMPA, FLORIDA 33602



3454 coveck avenue, suite 100, tampa, florida 33614
 telephone: 813.999.7209 fax: 813.931.1320
 email: info@billerreinhardt.com
 State of Florida Certificate of Authorization No. 9149

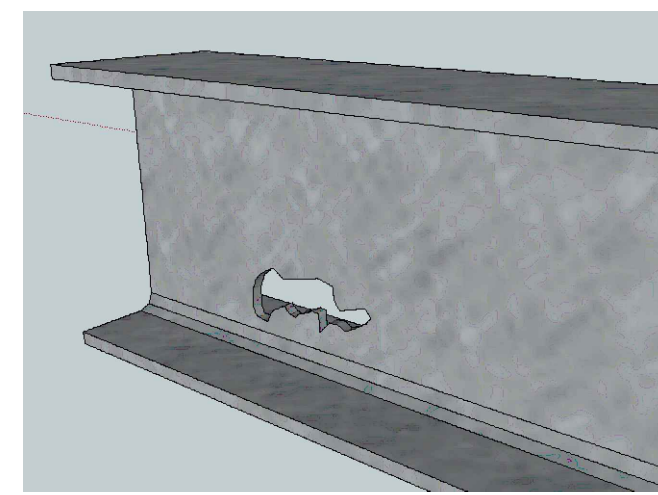
TO THE BEST OF THE ENGINEER'S KNOWLEDGE, THE PLANS AND SPECIFICATIONS COMPLY WITH THE APPLICABLE BUILDING AND RELATED CODES.

ROBERT J. REINHART
 FL P.E. NO. 50076

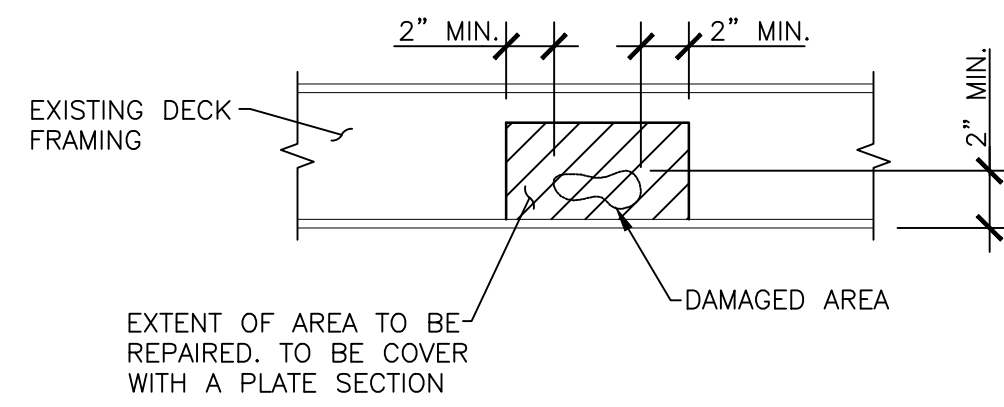
GENERAL NOTES

DATE: 02/24/14 DRAWN BY: KC RC
 JOB NO: 13-772 DESIGN BY: RR SM

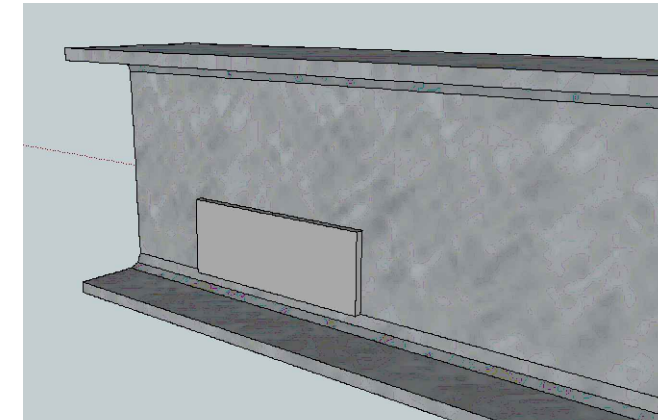
SHEET NO.
S-1



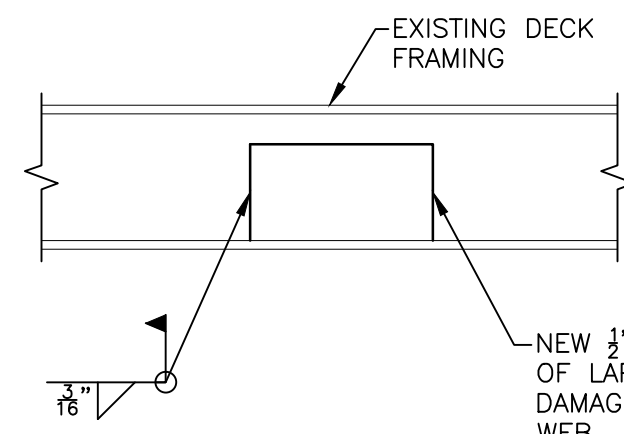
TYPICAL STRINGER PRIOR TO REPAIR



EXTENT OF AREA TO BE REPAIRED, TO BE COVERED WITH A PLATE SECTION

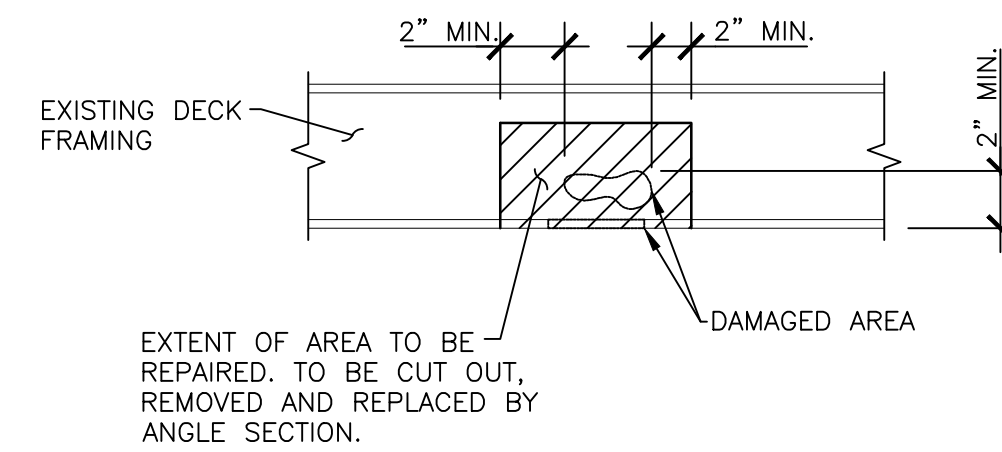


TYPICAL STRINGER WEB REPAIR

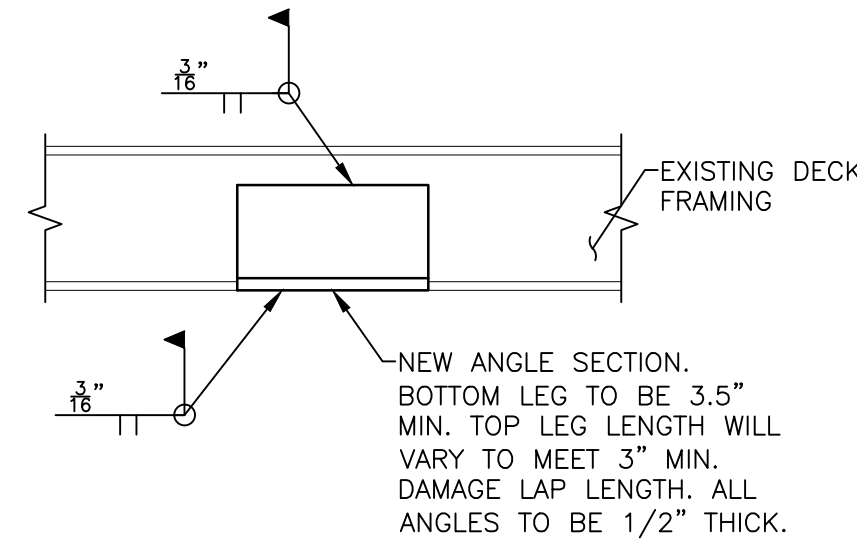


NEW 1/2" THICK PLATE SECTION, 2" OF LAP BETWEEN UNDAAGED AND DAMAGED SECTION, BOTH SIDES OF WEB

1 REPAIR OF WEB SECTION
S-2 SCALE: 1-1/2" = 1'-0"

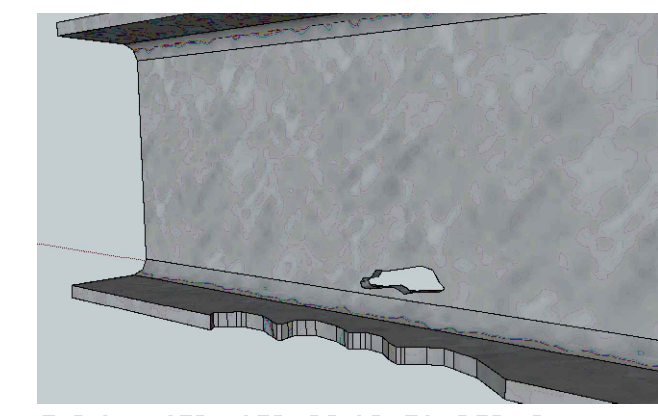


EXTENT OF AREA TO BE REPAIRED, TO BE CUT OUT, REMOVED AND REPLACED BY ANGLE SECTION.

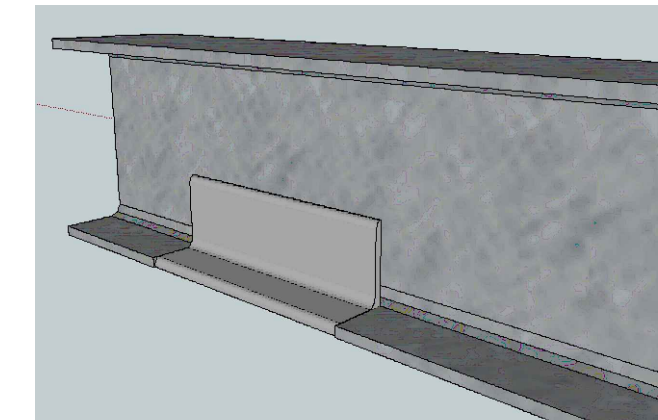


NEW ANGLE SECTION, BOTTOM LEG TO BE 3.5" MIN. TOP LEG LENGTH WILL VARY TO MEET 3" MIN. DAMAGE LAP LENGTH. ALL ANGLES TO BE 1/2" THICK.

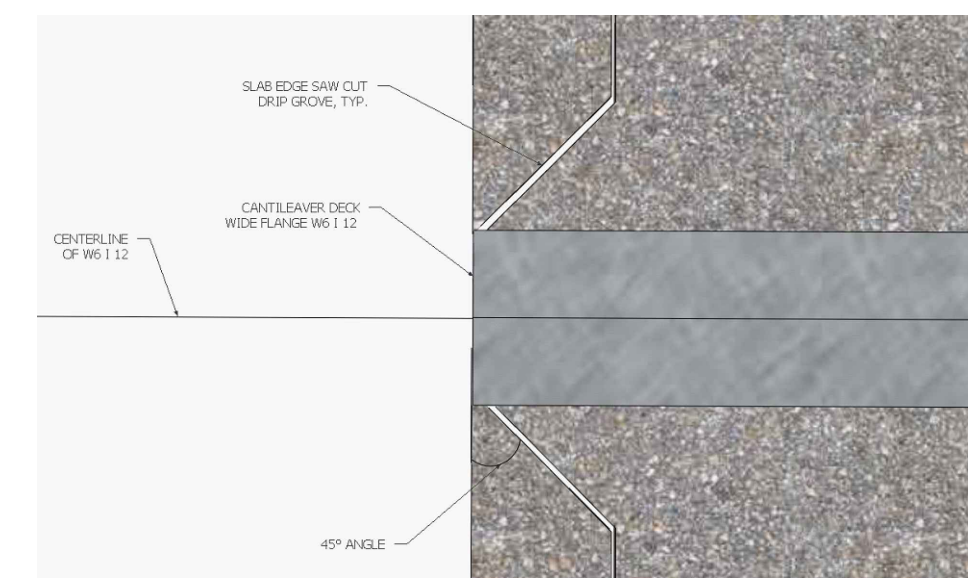
2 REPAIR OF WEB AND FLANGE SECTION
S-2 SCALE: 1-1/2" = 1'-0"



TYPICAL STRINGER PRIOR TO REPAIR



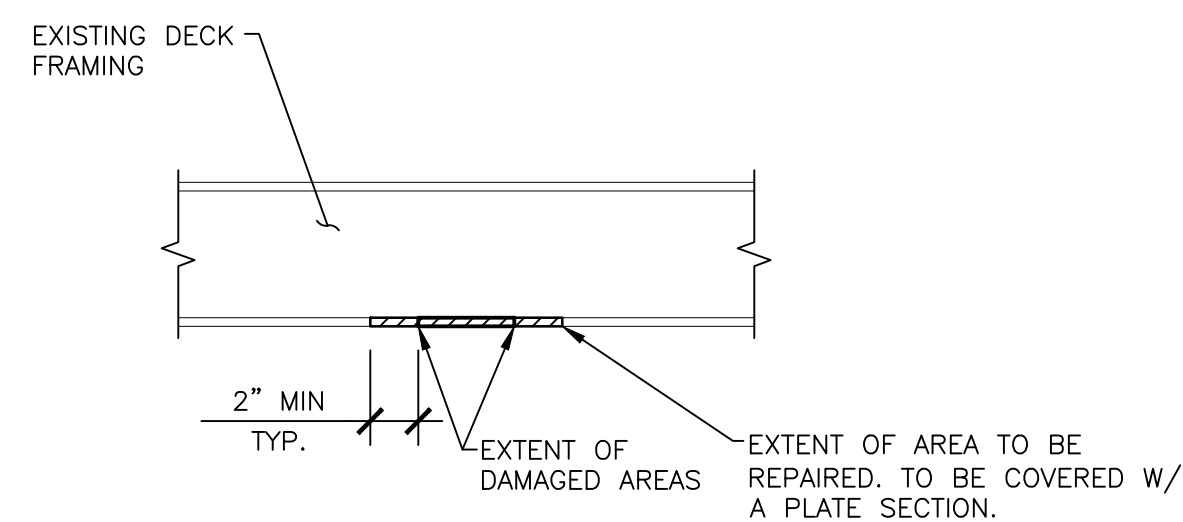
TYPICAL WEB AND FLANGE REPAIR



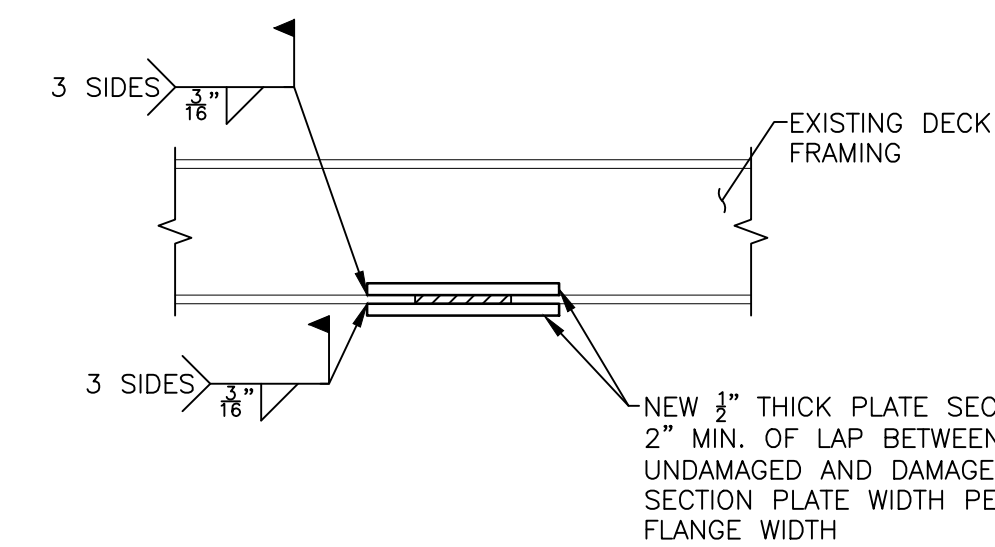
DRIP NOTCH EDGE DETAIL (UNDERSIDE PLAN VIEW)



DRIP EDGE DETAIL (SECTION CUT)

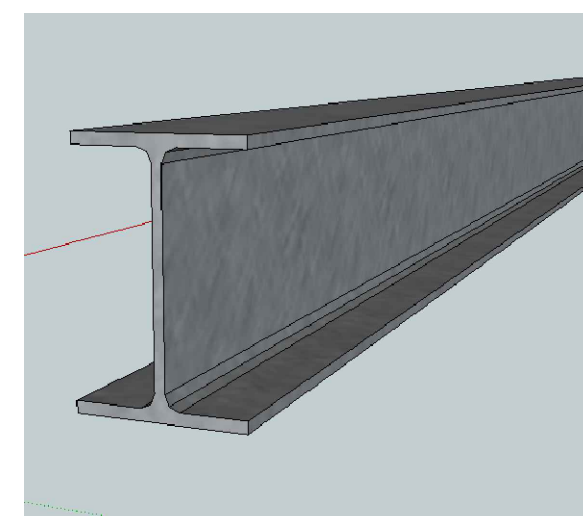


EXTENT OF DAMAGED AREAS
EXTENT OF AREA TO BE REPAIRED, TO BE COVERED W/ A PLATE SECTION.

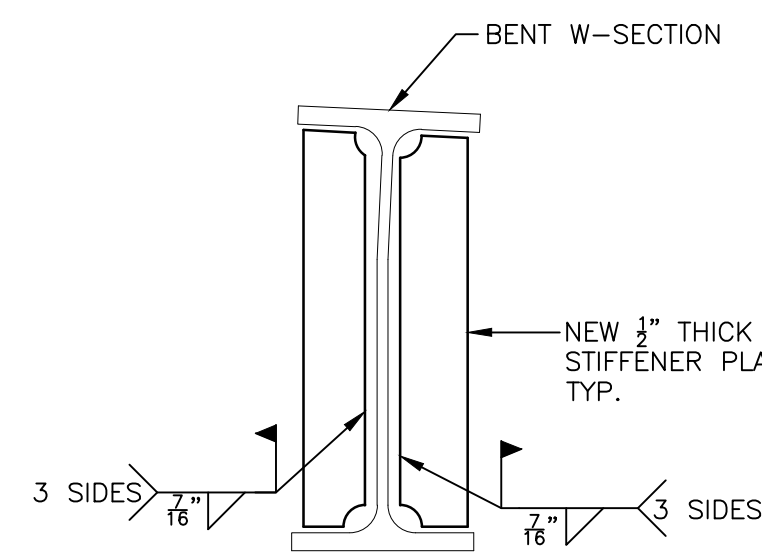
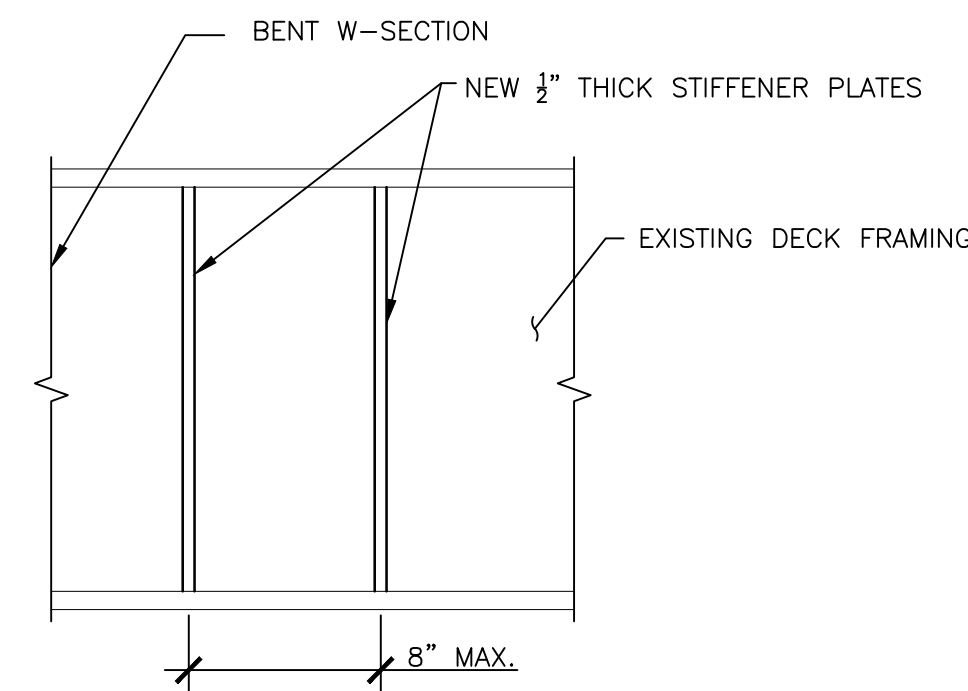


NEW 1/2" THICK PLATE SECTION, 2" MIN. OF LAP BETWEEN UNDAAGED AND DAMAGED SECTION PLATE WIDTH PER FLANGE WIDTH

3 REPAIR OF FLANGE SECTION
S-2 SCALE: 1-1/2" = 1'-0"

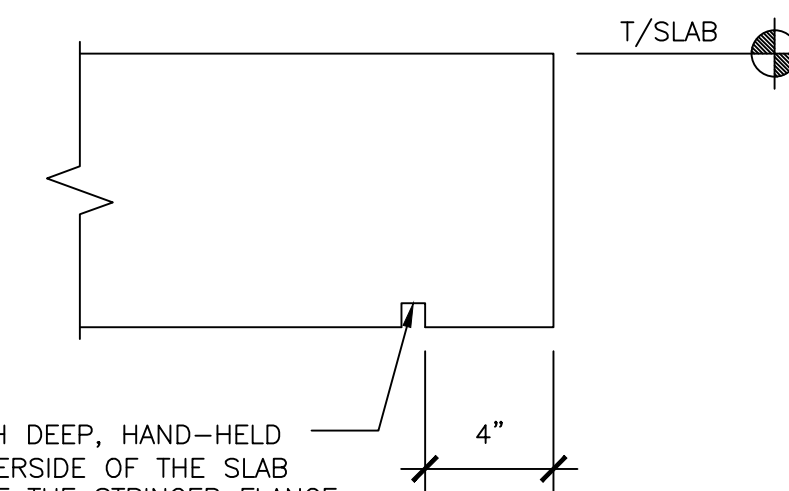


TYPICAL GIRDER SECTION



NEW 1/2" THICK STIFFENER PLATE, TYP.

4 BENT WEB REPAIR
S-2 SCALE: 1-1/2" = 1'-0"



SAW-CUT (1/8-INCH TO 1/4-INCH DEEP, HAND-HELD DREMEL®-TYPE SAW) ON THE UNDERSIDE OF THE SLAB STARTING AT THE EXTERIOR END OF THE STRINGER FLANGE AT A 45-DEGREE ANGLE INWARD TO ABOUT 4 INCHES FROM THE DECK EDGE THEN RUN PARALLEL TO THE DECK EDGE. THE SAW-CUT WOULD THEN ANGLE BACK OUT TOWARD THE DECK EXTERIOR EDGE APPROACHING THE NEXT END OF THE STRINGER FLANGE.

5 DRIP COVE/GROOVE
S-2 SCALE: N.T.S.

REVISIONS		NO.	DATE	COMMENTS

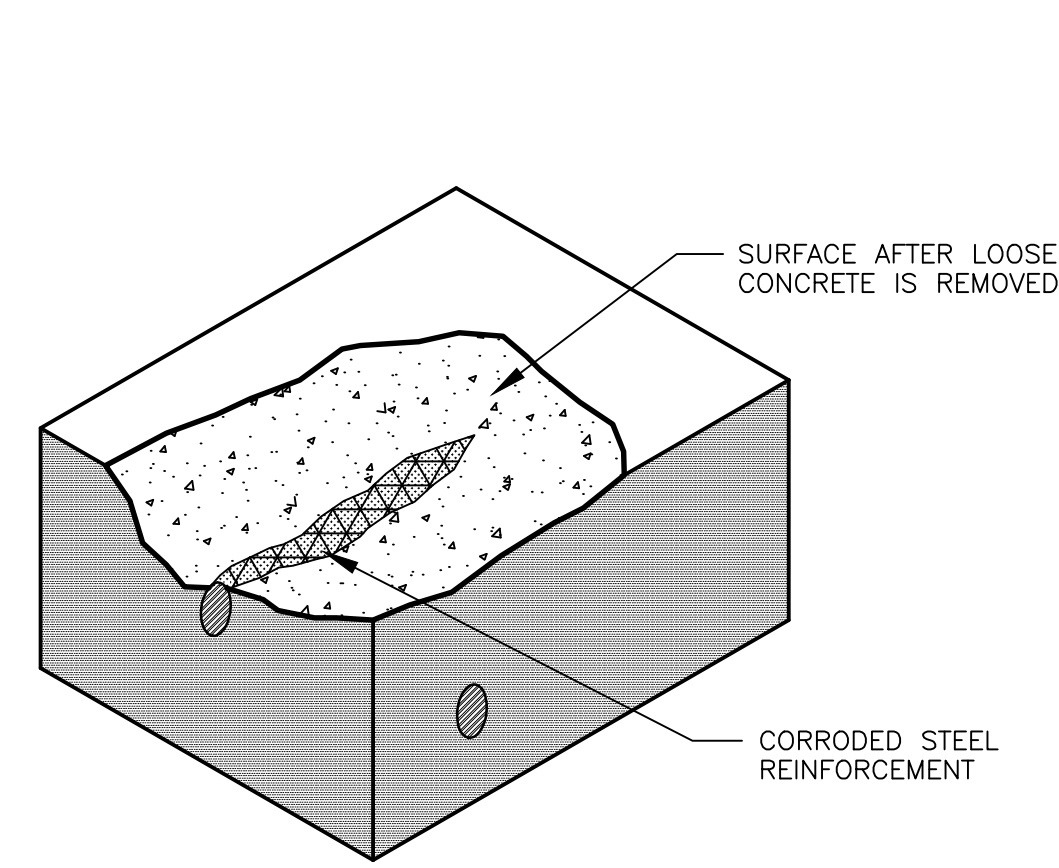
HILLSBOROUGH RIVER GIRDER REPAIRS
CITY OF TAMPA WATER DEPT.
306 EAST JACKSON STREET
TAMPA, FLORIDA 33602

billerreinhardt
STRUCTURAL GROUP, INC.
3454 Cowell Avenue, Suite 100, Tampa, Florida 33614
Telephone: 813.999.7202 Fax: 813.931.1320
email: info@billerreinhardt.com
State of Florida Certificate of Authorization No. 9149

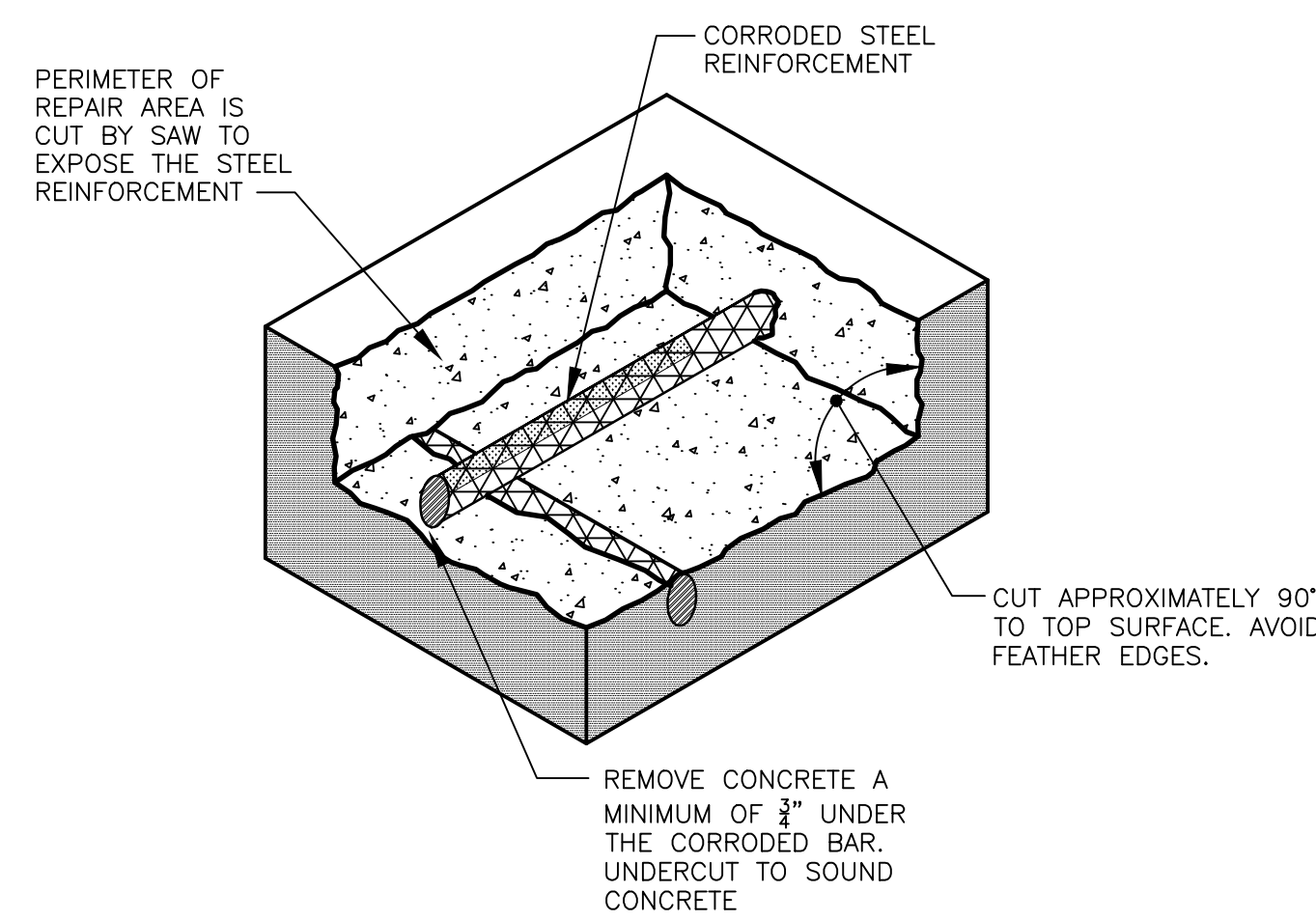
TO THE BEST OF THE ENGINEER'S KNOWLEDGE, THE PLANS AND SPECIFICATIONS COMPLY WITH THE APPLICABLE FEDERAL BUILDING CODES
ROBERT J. REINHART
FL P.E. NO. 50076

REPAIR DETAILS
DATE: 02/24/14 DRAWN BY: KC RC
JOB NO: 13-772 DESIGN BY: RR SM

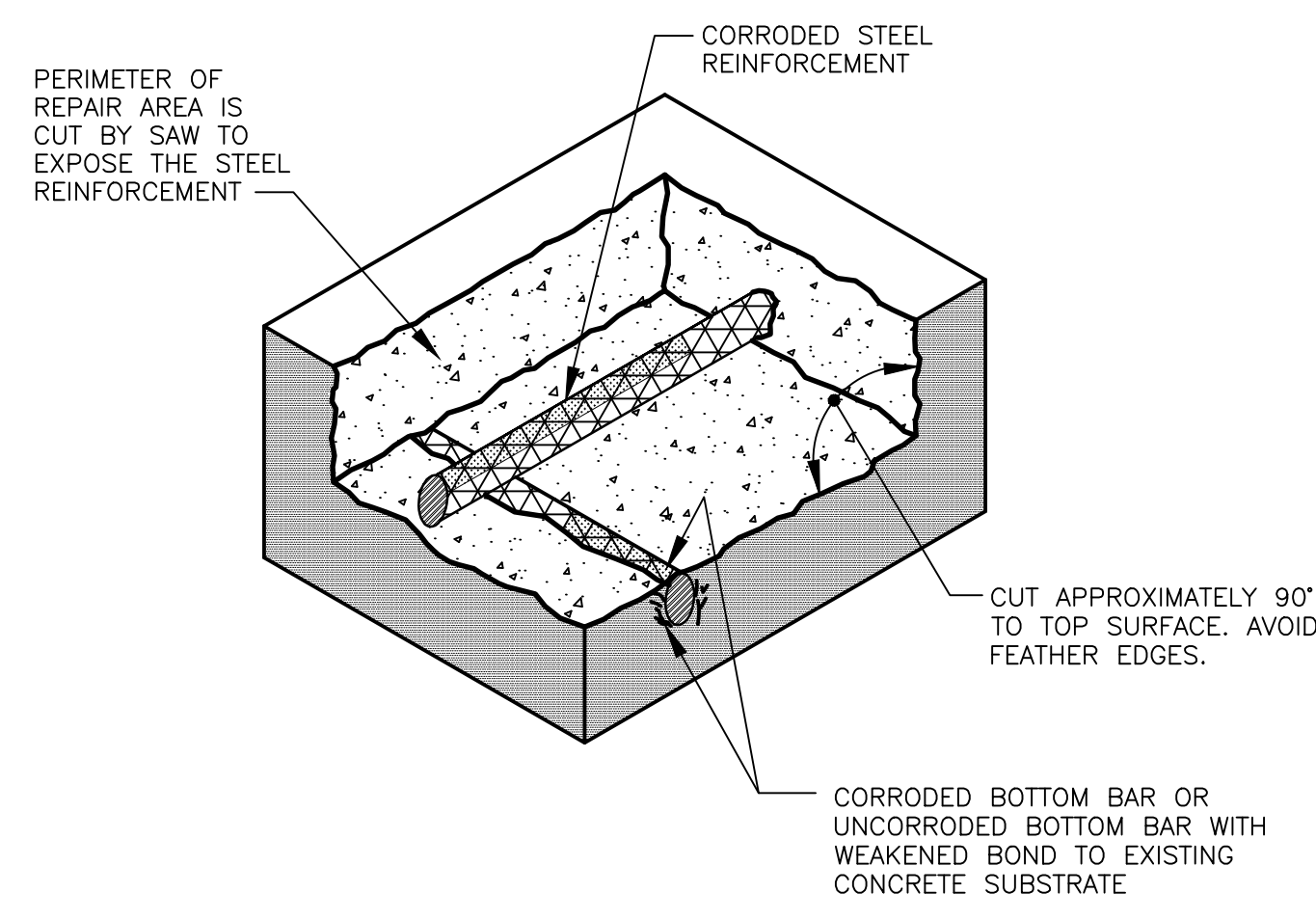
SHEET NO.
S-2



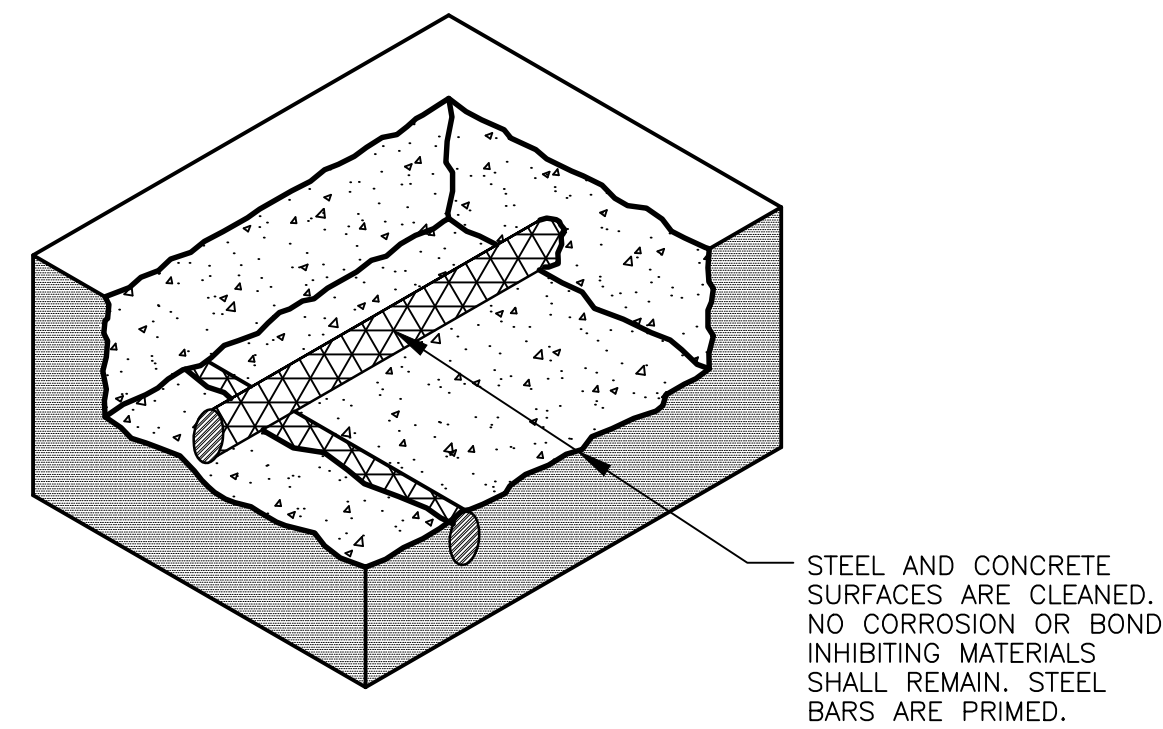
SURFACE PREPARATION WHEN CORRODED REINFORCEMENT IS ENCOUNTERED.



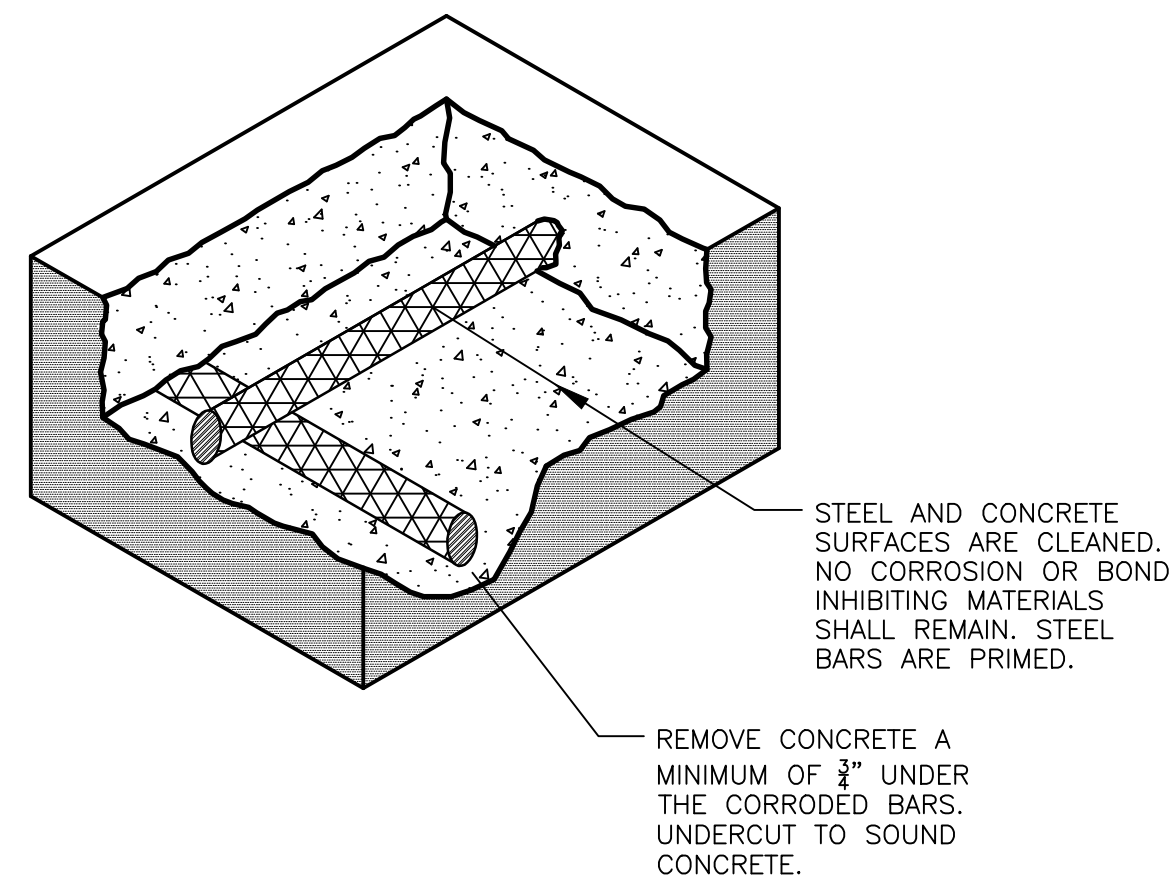
SURFACE PREPARATION WHEN CORRODED REINFORCEMENT IS ENCOUNTERED AT TOP BARS ONLY.



SURFACE PREPARATION WHEN CORRODED REINFORCEMENT IS ENCOUNTERED AT TOP AND BOTTOM BARS.

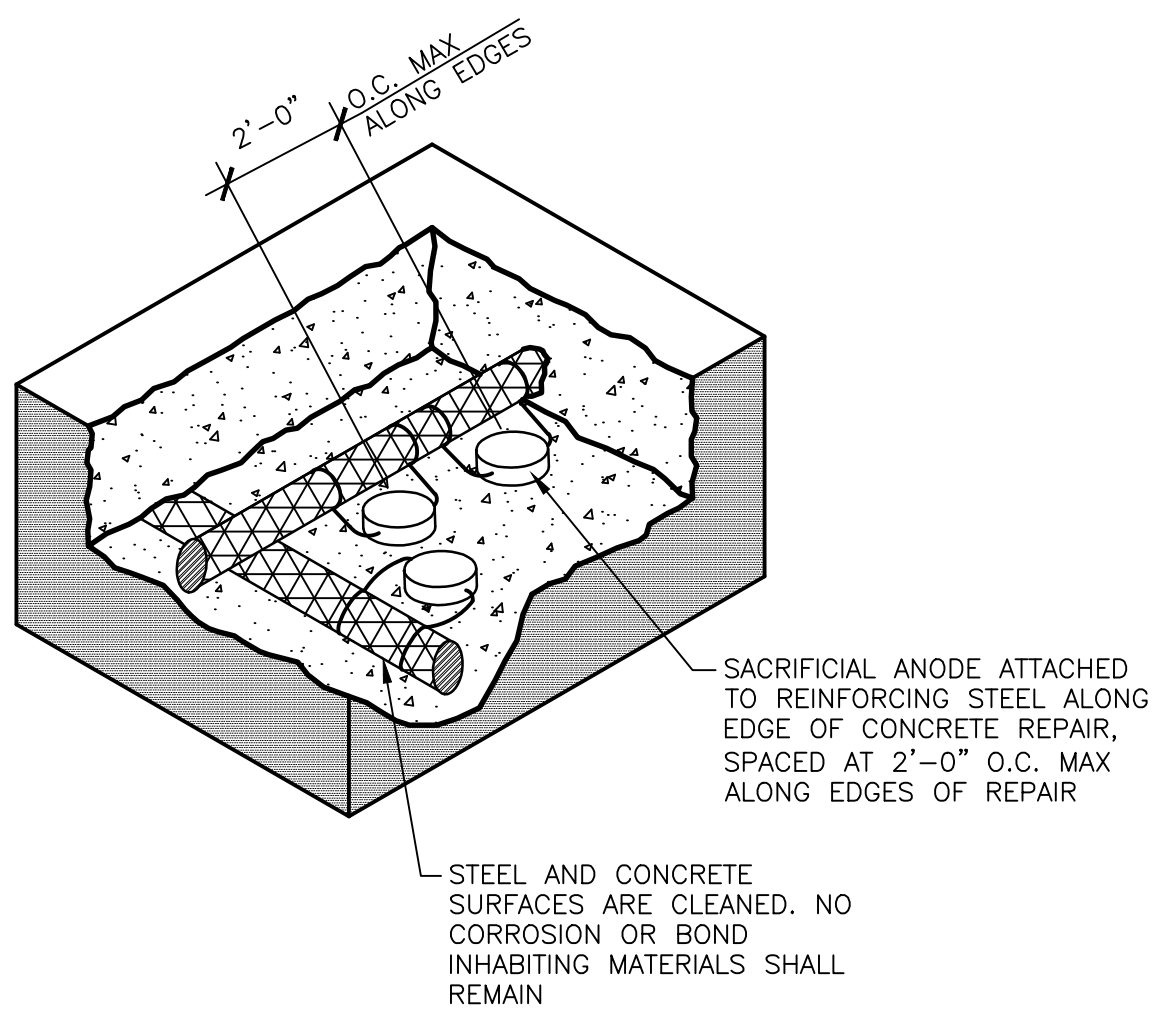


SURFACE PREPARATION WHEN CORRODED REINFORCEMENT IS ENCOUNTERED AT TOP BARS ONLY.



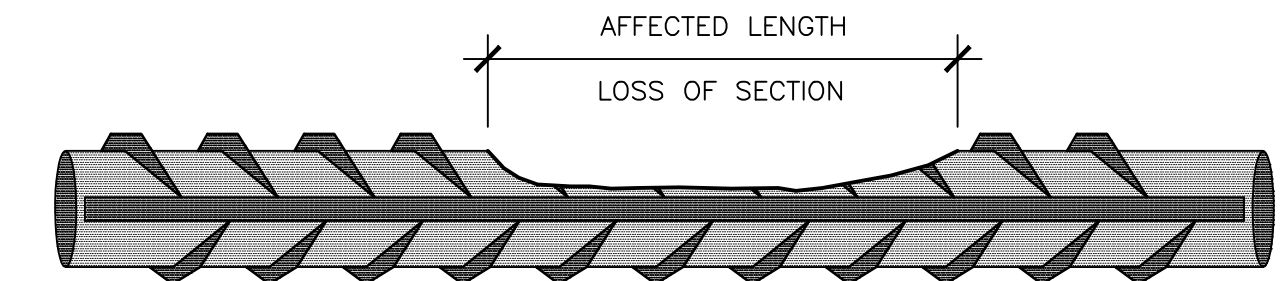
SURFACE PREPARATION WHEN CORRODED REINFORCEMENT IS ENCOUNTERED AT TOP AND BOTTOM BARS.

SURFACE PREPARATION DETAILS
SCALE: N.T.S.

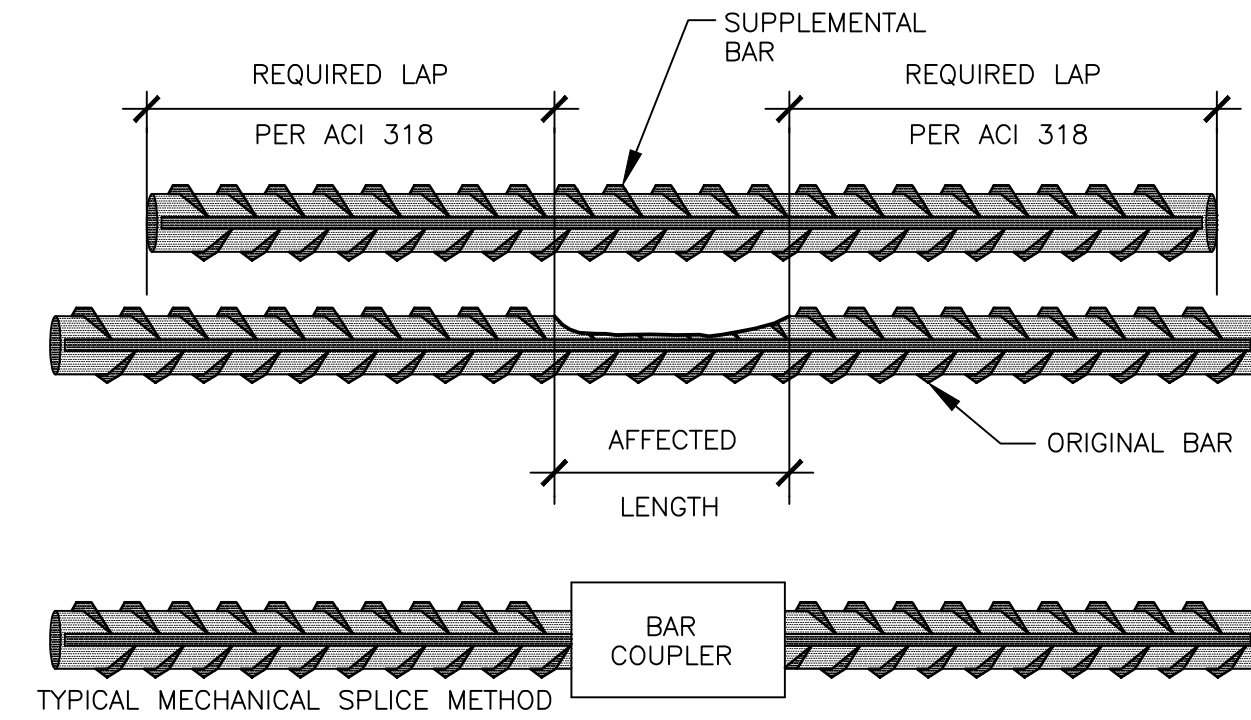


NOTES:

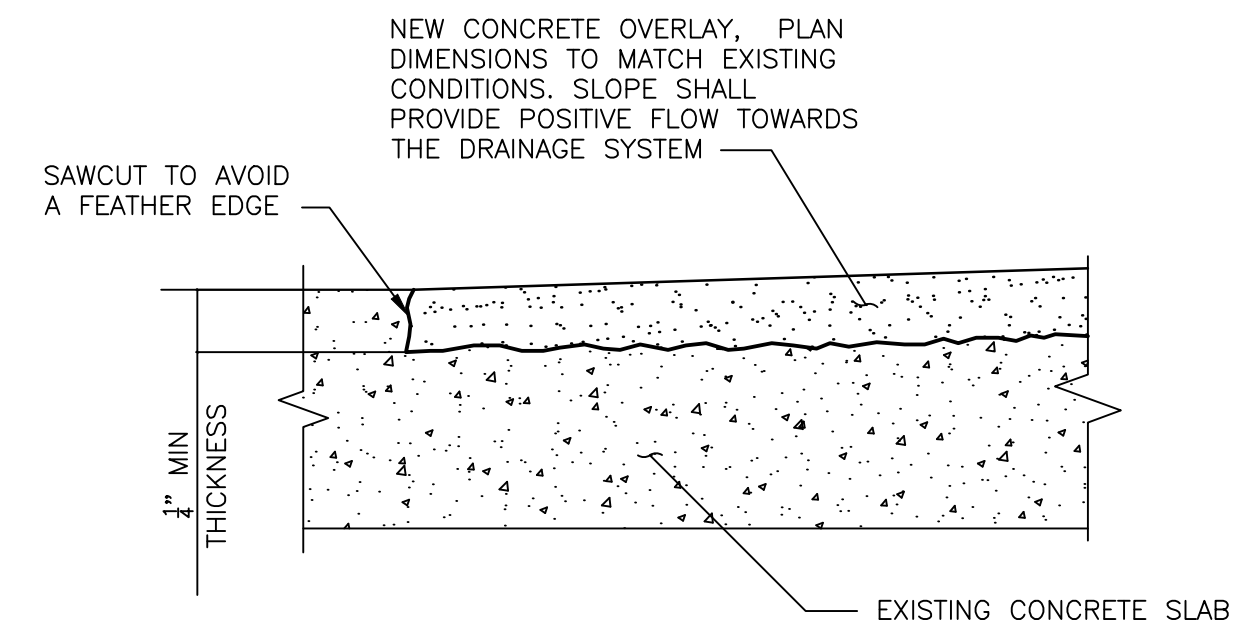
1. EXPOSE CORRODED STEEL REINFORCEMENT UNTIL UNOXIDIZED, UNCORRODED STEEL WITH SOUND BOND TO THE EXISTING CONCRETE SUBSTRATE IS ENCOUNTERED.
2. CLEARANCE BETWEEN UNDERCUT STEEL REINFORCEMENT AND SOUND CONCRETE SUBSTRATE SHALL BE 3/8" MINIMUM OR 1/2" LARGER THAN THE LARGEST AGGREGATE IN THE CONCRETE REPAIR MORTAR.
3. THE CONTRACTOR SHALL PROVIDE ADEQUATE SHORING PRIOR TO CONCRETE DEMOLITION.



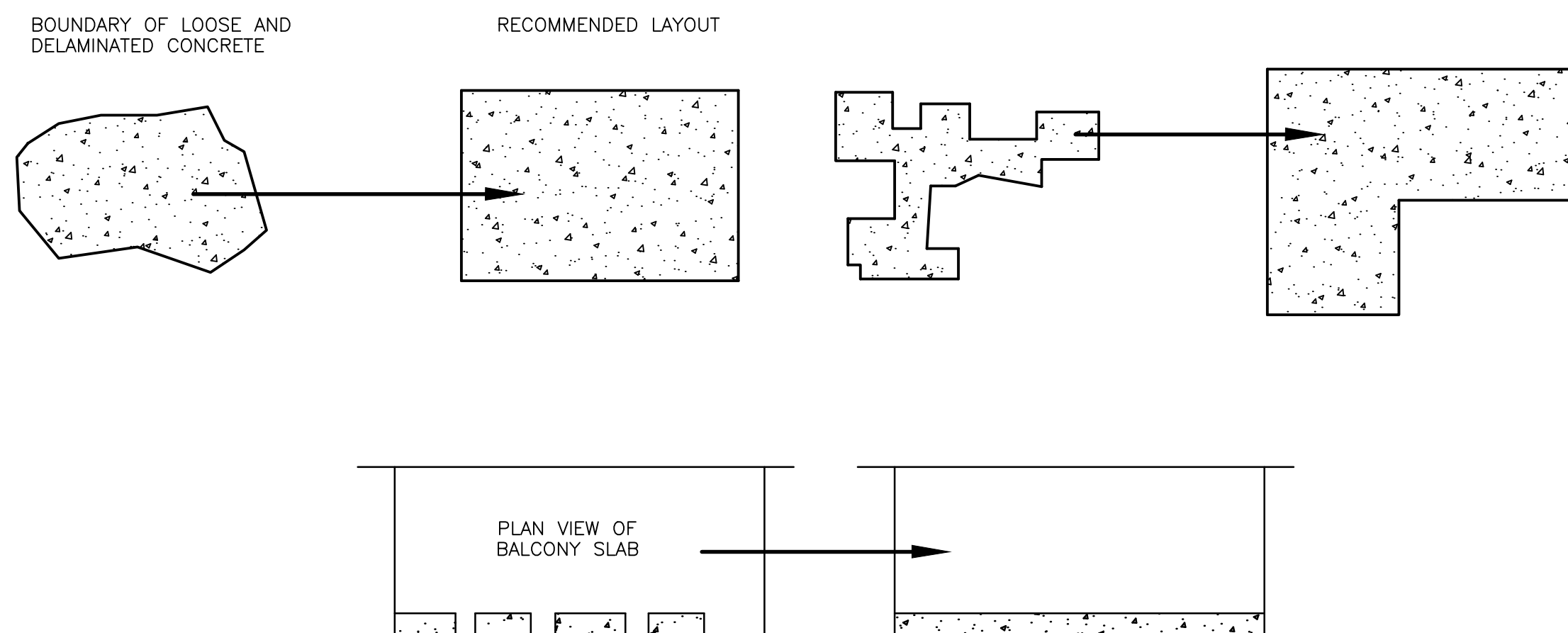
1. IF THE REINFORCING STEEL HAS LOST MORE THAN 25% OF ITS CROSS SECTION (OR 20% IF TWO OR MORE ADJACENT BARS ARE AFFECTED), THEN REINFORCING STEEL REPAIR IS REQUIRED.
2. WHEN DAMAGE TO REINFORCING STEEL IS UNCOVERED, CONSULT WITH THE STRUCTURAL ENGINEER.
3. IF REPAIRS ARE REQUIRED FOR THE REINFORCING STEEL, ONE OF THE FOLLOWING METHODS SHOULD BE USED:
A. SUPPLEMENTAL BAR OVER AFFECTED LENGTH. NEW BAR MAY BE MECHANICALLY SPLICED TO AFFECTED BAR OR PLACED PARALLEL TO EXISTING BAR.
B. COMPLETE BAR REPLACEMENT.



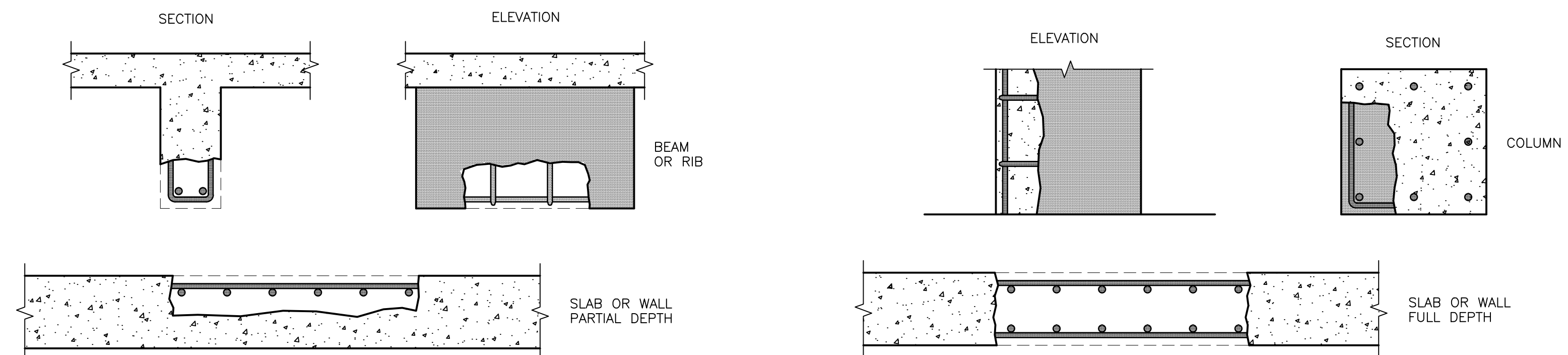
REINFORCING STEEL REPAIR SECTION LOSS DETAIL
SCALE: N.T.S.



NEW CONCRETE OVERLAY DETAIL
SCALE: N.T.S.



PLAN VIEW



ELEVATION & SECTION VIEW

NO.	DATE	COMMENTS

HILLSBOROUGH RIVER GIRDER REPAIRS
CITY OF TAMPA WATER DEPT.
306 EAST JACKSON STREET
TAMPA, FLORIDA 33602

billerreinhardt
STRUCTURAL GROUP, INC.
3454 coveille avenue, 100 Tampa, Florida 33614
Telephone: 813.999.7202 Fax: 813.931.1320
email: b@billerreinhardt.com
State of Florida Certificate of Authorization No. 9149

TO THE BEST OF THE ENGINEER'S KNOWLEDGE, THE PLANS AND SPECIFICATIONS COMPLY WITH THE APPLICABLE FEDERAL, STATE AND LOCAL CODES.
ROBERT J. REINHART
FL P.E. NO. 50076

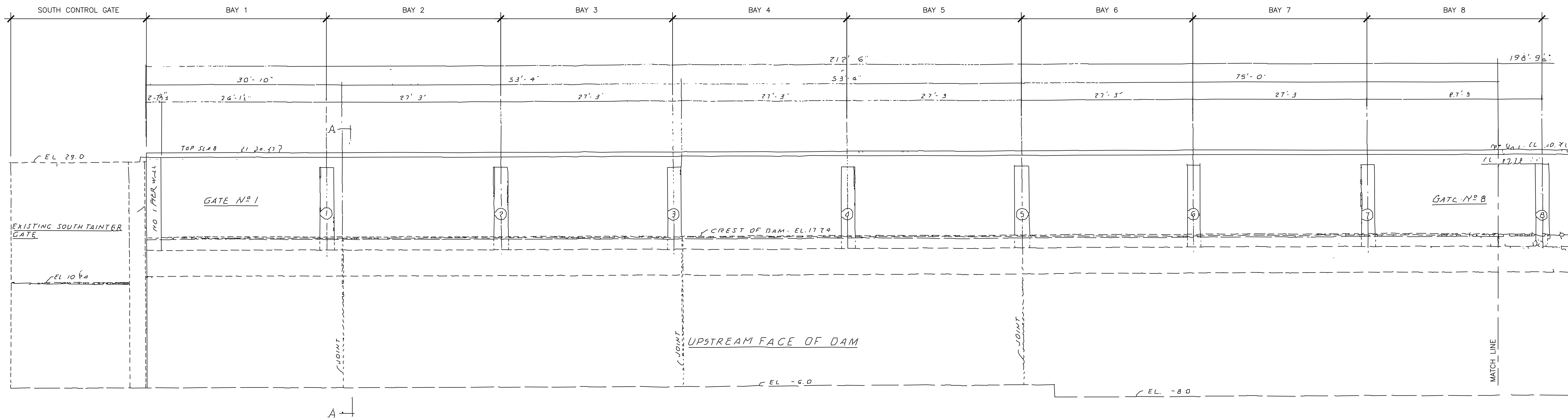
REPAIR DETAILS

DATE: 02/24/14 DRAWN BY: KC RC
JOB NO: 13-772 DESIGN BY: RR SM

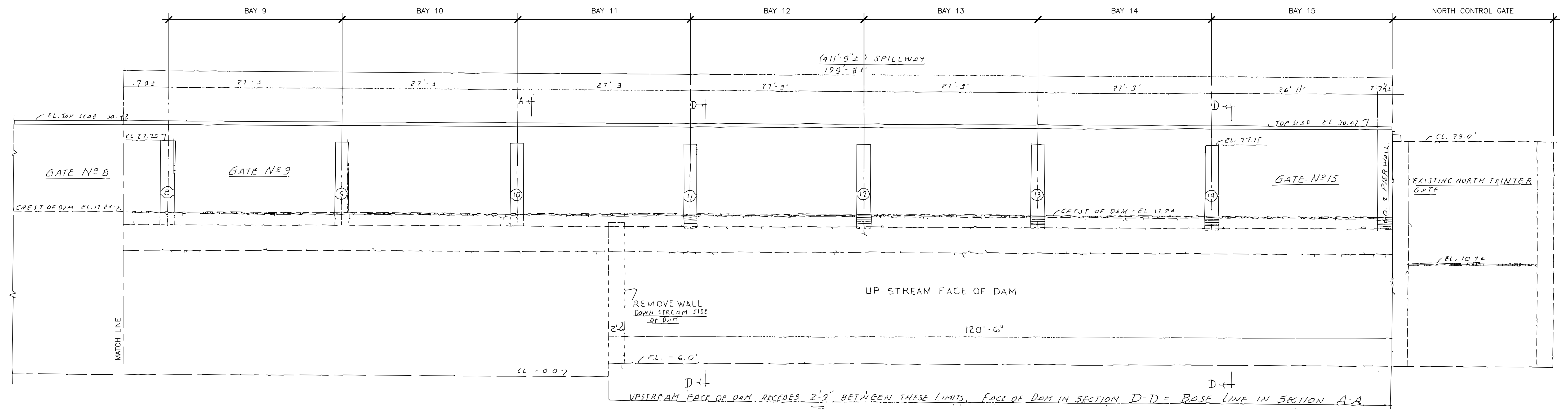
SHEET NO.

S-3

GEOMETRY OF CONCRETE REPAIRS
SCALE: N.T.S.



1 ELEVATION-SOUTH PORTION HILLSBOROUGH RIVER DAM
 S-4 SCALE: 1/8" = 1'-0"



2 ELEVATION-NORTH PORTION HILLSBOROUGH RIVER DAM
 S-4 SCALE: 1/8" = 1'-0"

NO.	DATE	COMMENTS

**HILLSBOROUGH RIVER
 GIRDER REPAIRS**
 CITY OF TAMPA WATER DEPT.
 306 EAST JACKSON STREET
 TAMPA, FLORIDA 33602

billerreinhardt
 STRUCTURAL GROUP, INC.
 3434 cowell avenue, suite 100, Tampa, Florida 33614
 telephone: 813.999.7200 fax: 813.931.1320
 email: info@billerreinhardt.com
 State of Florida Certificate of Authorization No. 9149

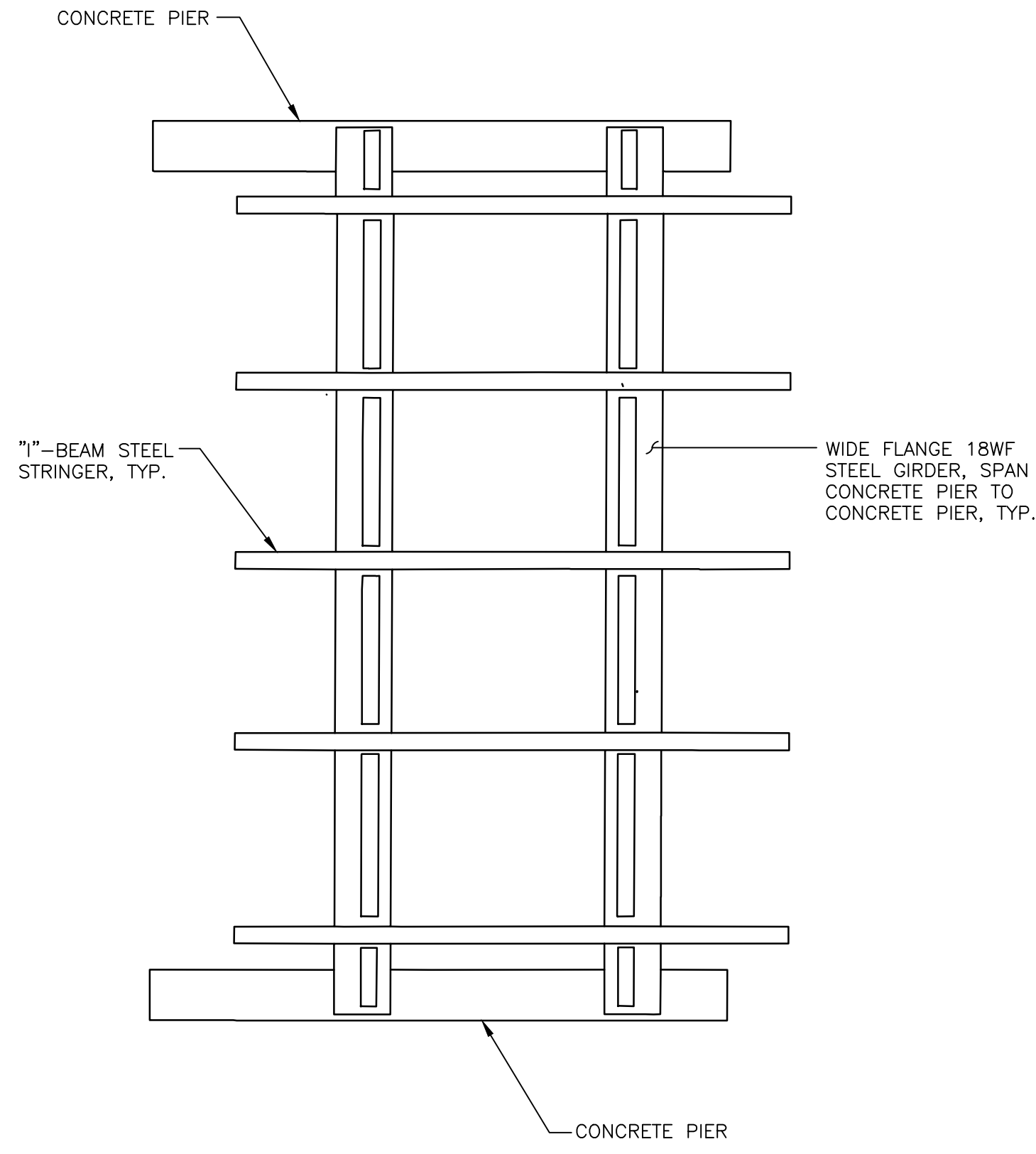
TO THE BEST OF THE ENGINEER'S KNOWLEDGE
 THE PLANS AND SPECIFICATIONS COMPLY WITH
 THE APPLICABLE FEDERAL, STATE AND LOCAL CODES

ROBERT J. REINHART
 E.L.P.E. NO. 50076

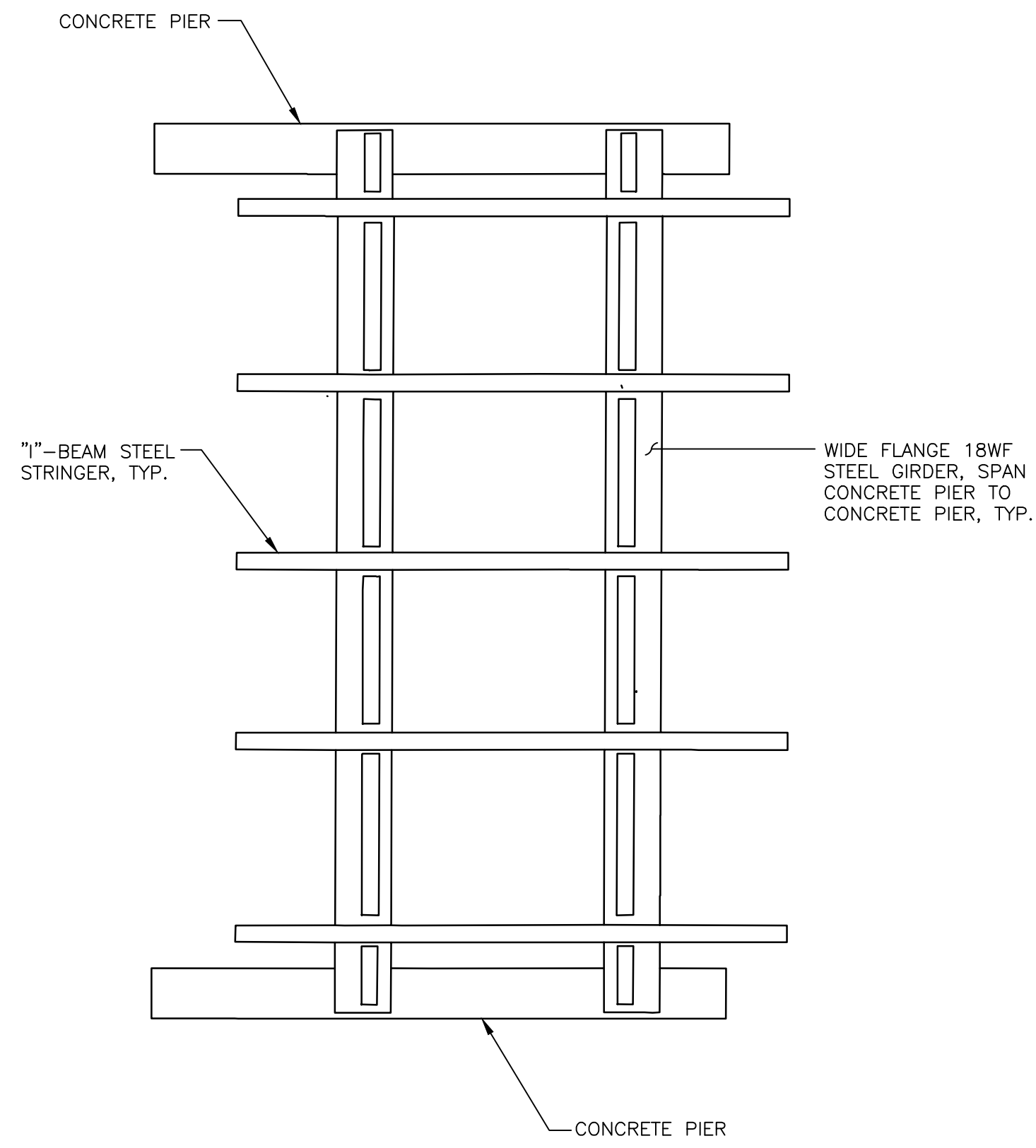
ELEVATIONS

DATE: 02/24/14 DRAWN BY: KC RC
 JOB NO: 13-772 DESIGN BY: RR SM

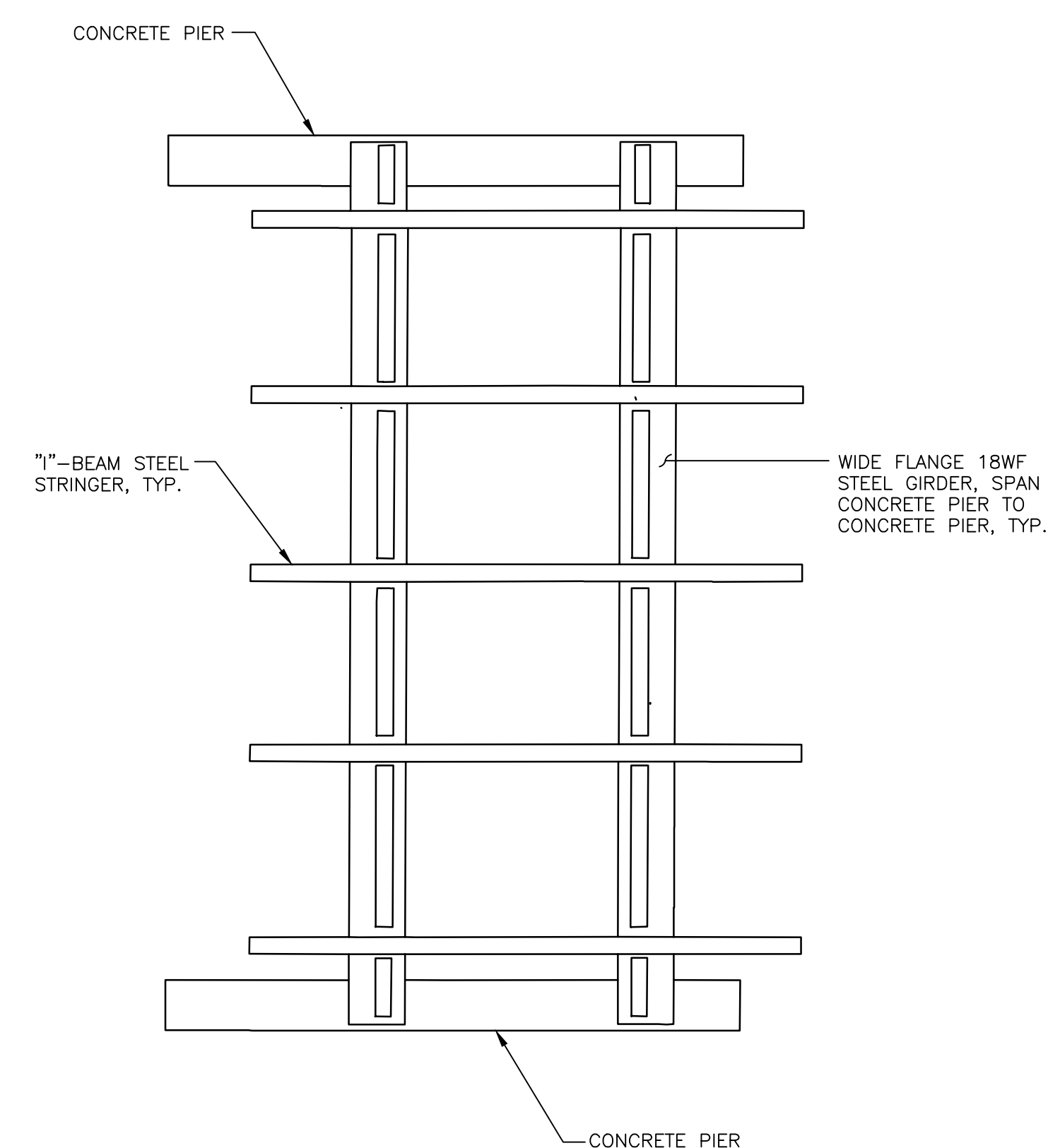
SHEET NO.
S-4



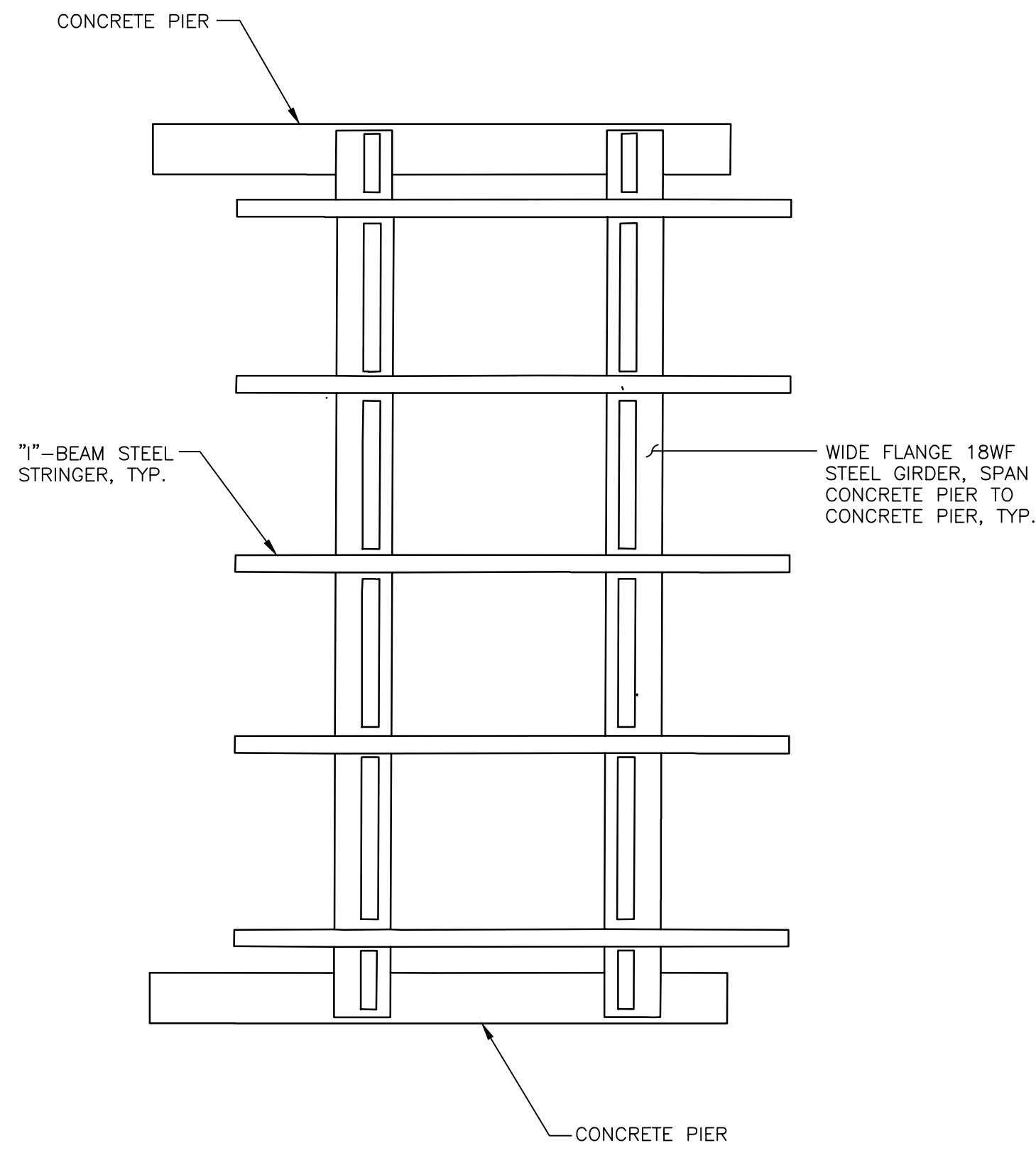
1 **BAY 1**
S-5 SCALE: N.T.S.



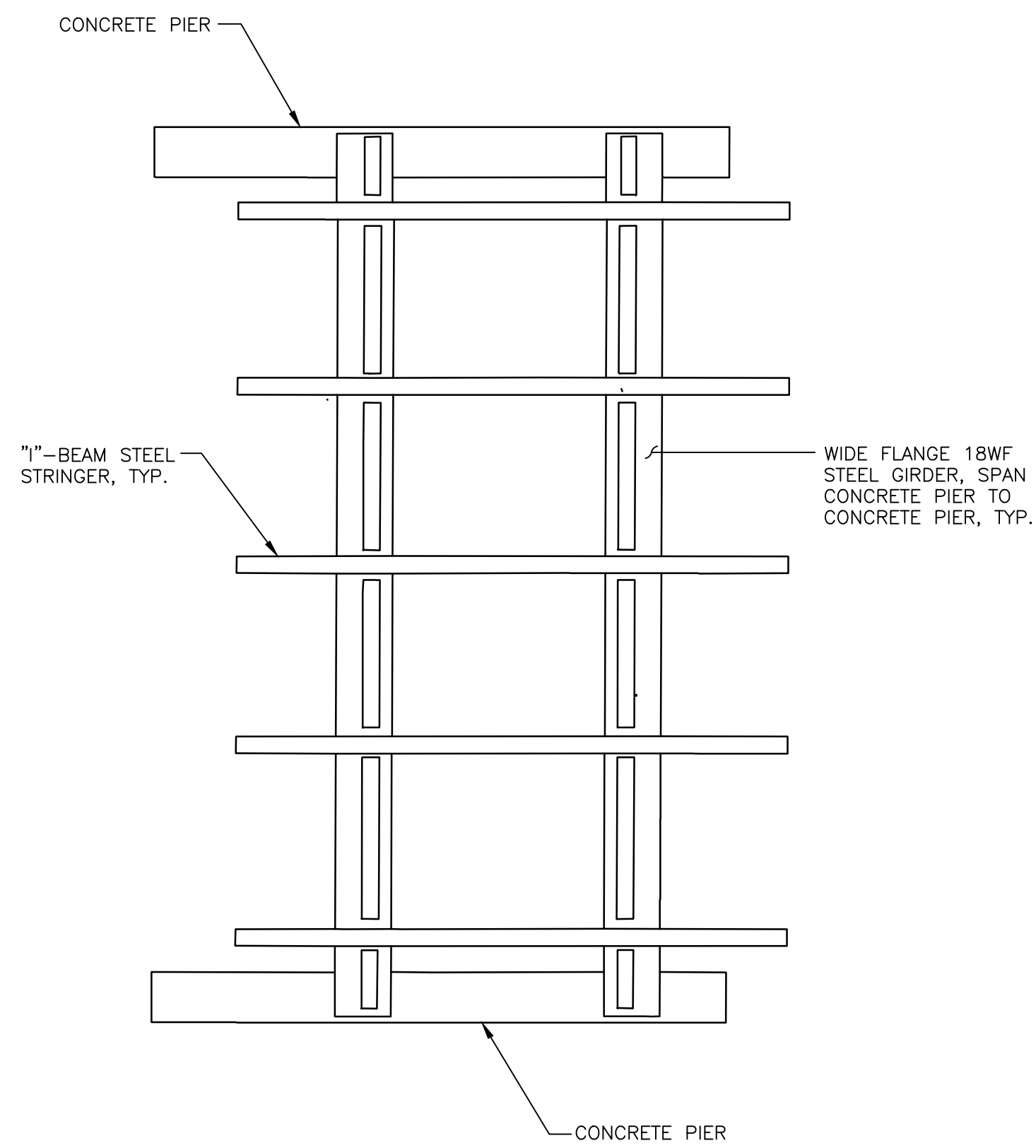
2 **BAY 2**
S-5 SCALE: N.T.S.



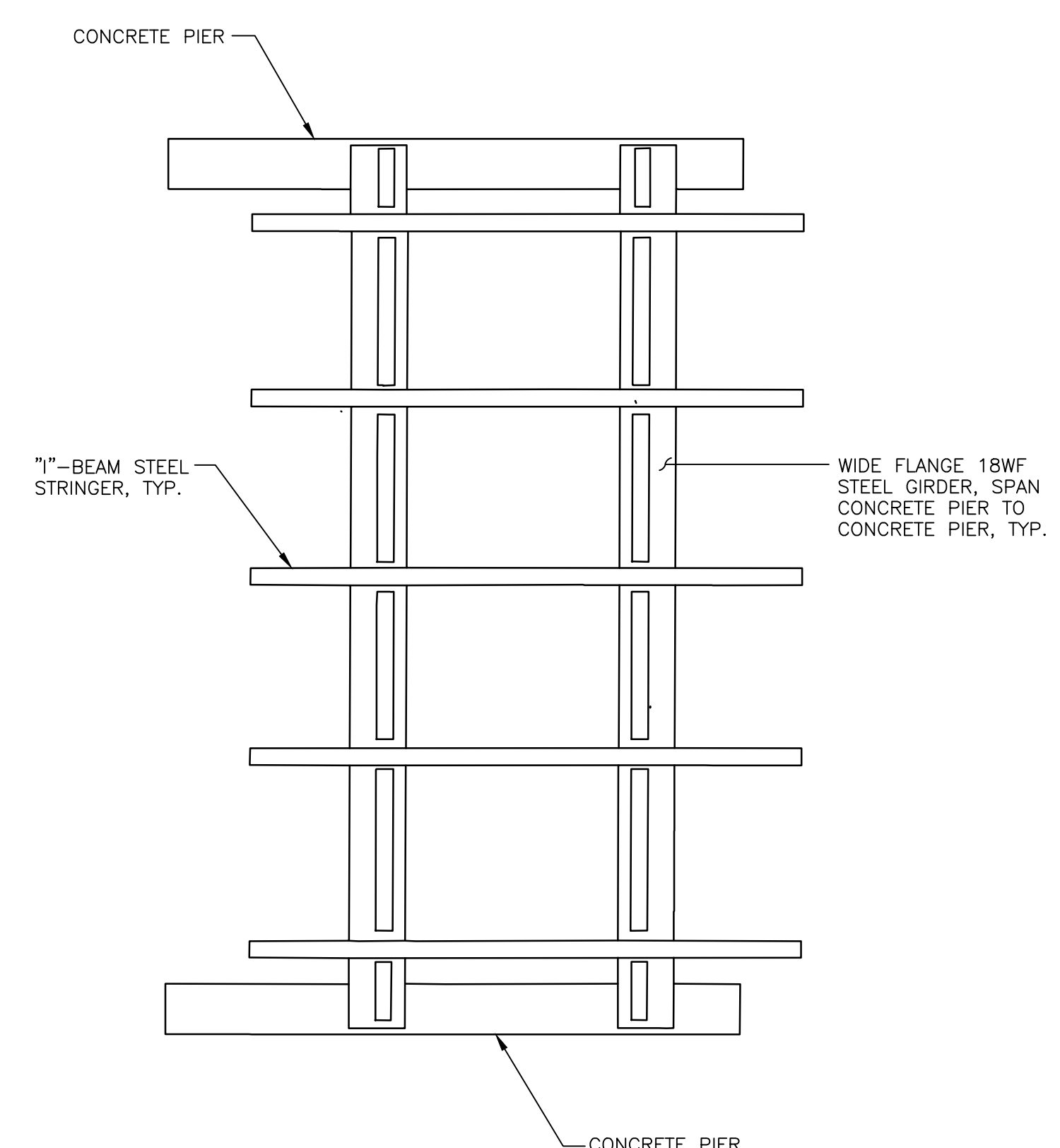
3 **BAY 3**
S-5 SCALE: N.T.S.



4 **BAY 4**
S-5 SCALE: N.T.S.



5 **BAY 5**
S-5 SCALE: N.T.S.



6 **BAY 6**
S-5 SCALE: N.T.S.

NO.	DATE	COMMENTS

**HILLSBOROUGH RIVER
GIRDER REPAIRS**
CITY OF TAMPA WATER DEPT.
306 EAST JACKSON STREET
TAMPA, FLORIDA 33602

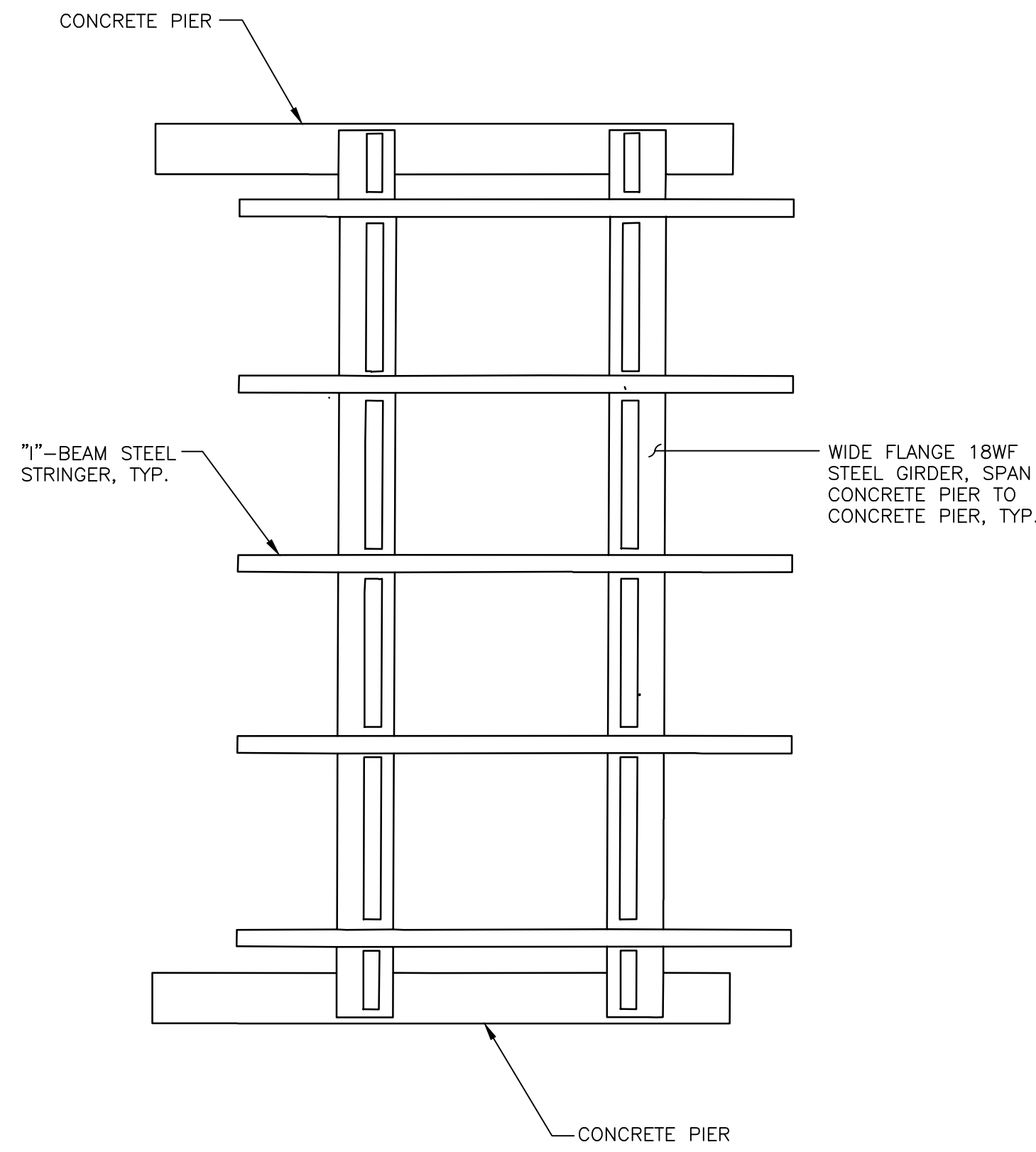
billerreinhardt
STRUCTURAL GROUP, INC.
3434 cowell avenue, suite 100, Tampa, Florida 33614
telephone: 813.999.7209 fax: 813.931.1320
email: info@billerreinhardt.com
State of Florida Certificate of Authorization No. 9149

TO THE BEST OF THE ENGINEER'S KNOWLEDGE,
THE PLANS AND SPECIFICATIONS COMPLY WITH
THE APPLICABLE FEDERAL BUILDING CODES

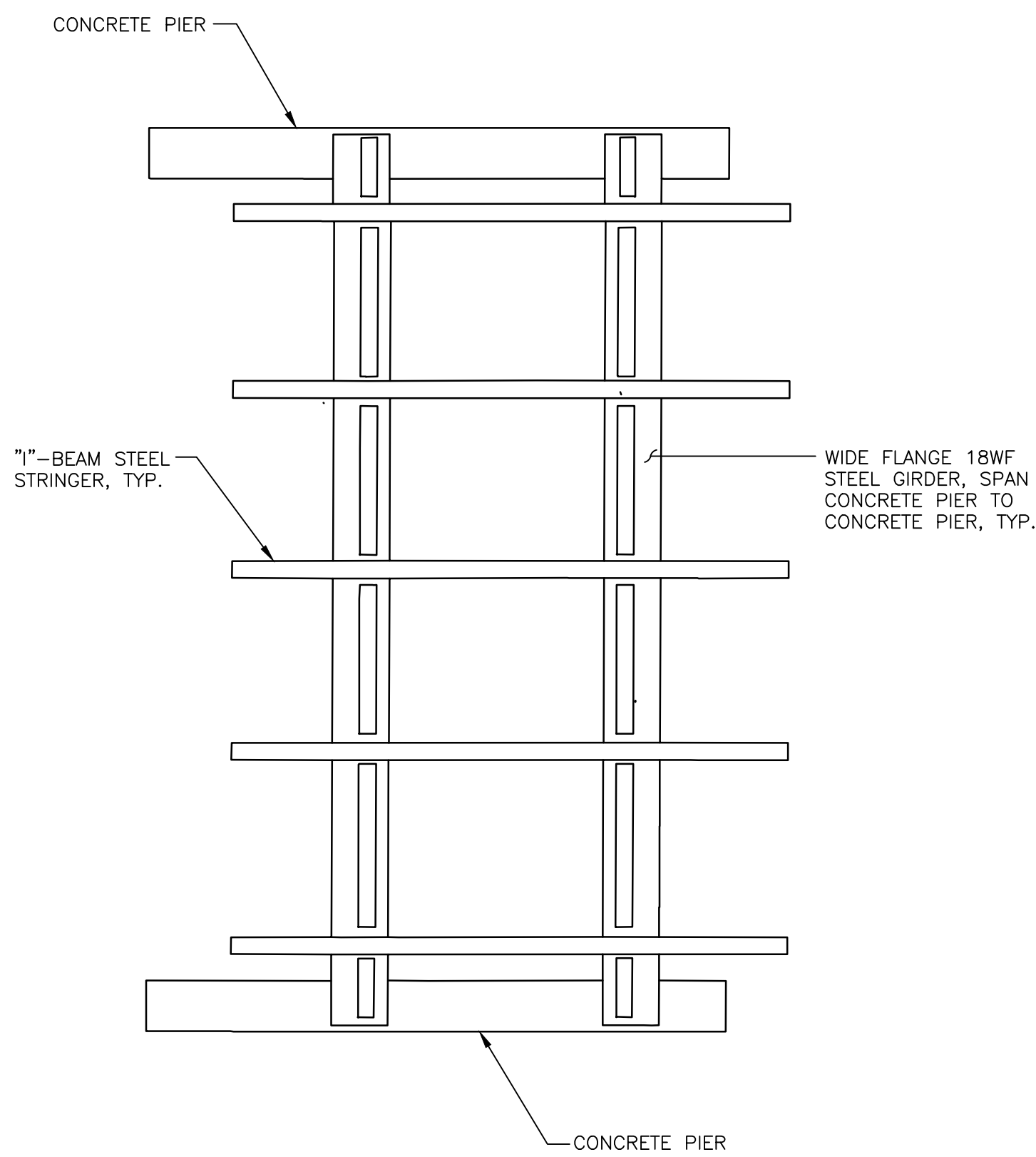
ROBERT J. REINHART
FL P.E. NO. 50076

PARTIAL PLAN
DATE: 02/24/14 DRAWN BY: KC RC
JOB NO: 13-772 DESIGN BY: RR SM

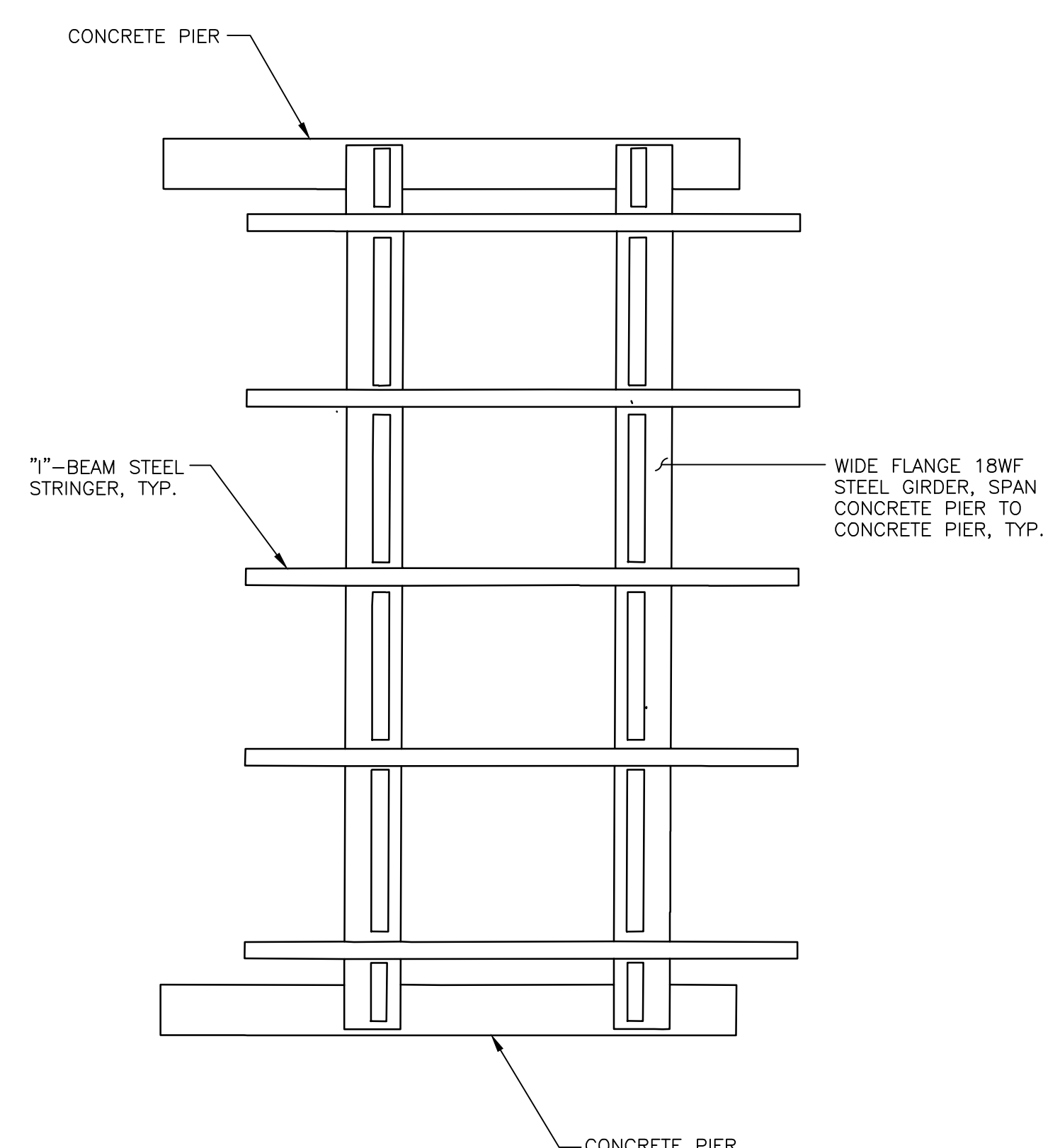
SHEET NO.
S-5



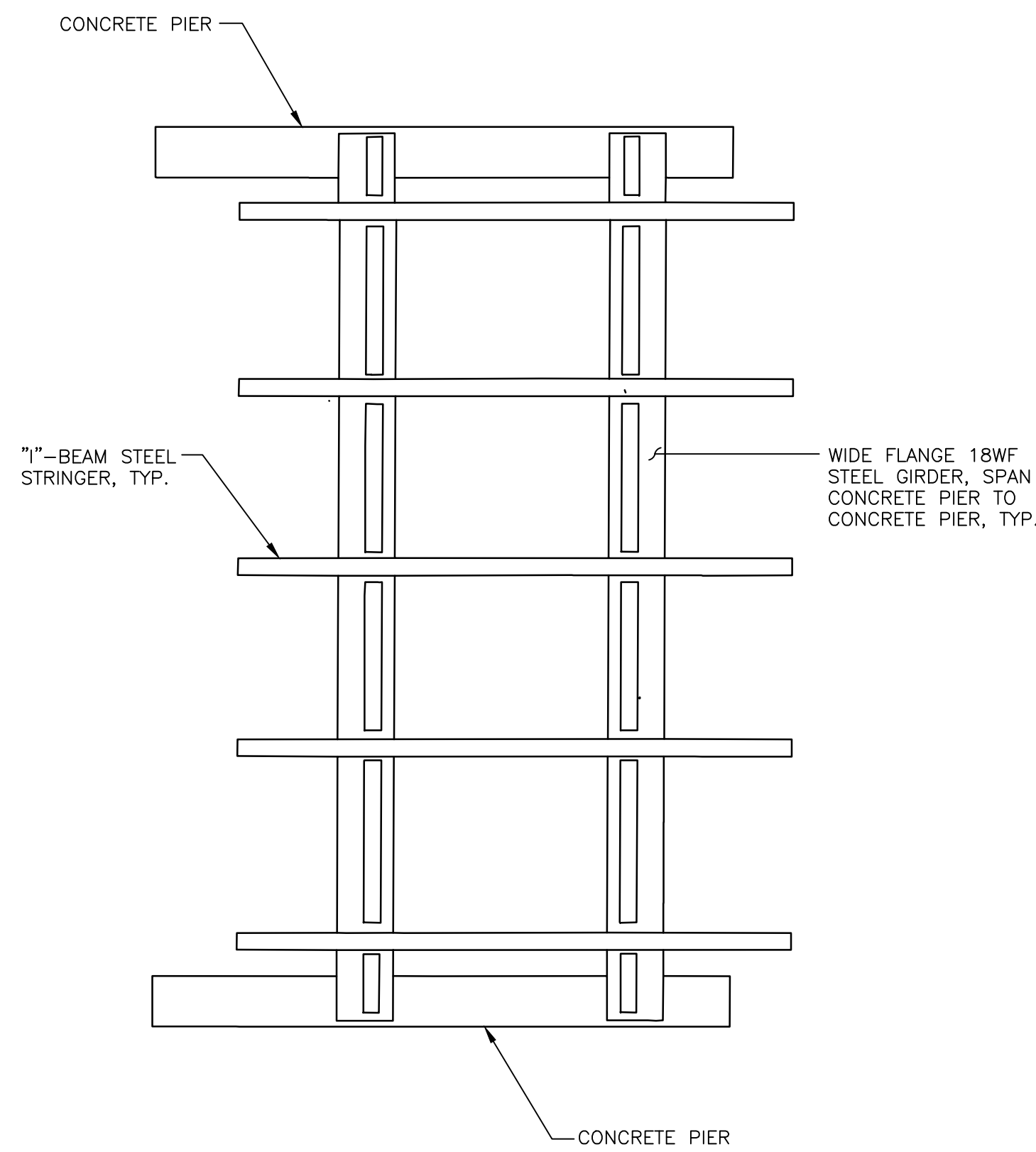
1 **BAY 7**
S-6 SCALE: N.T.S.



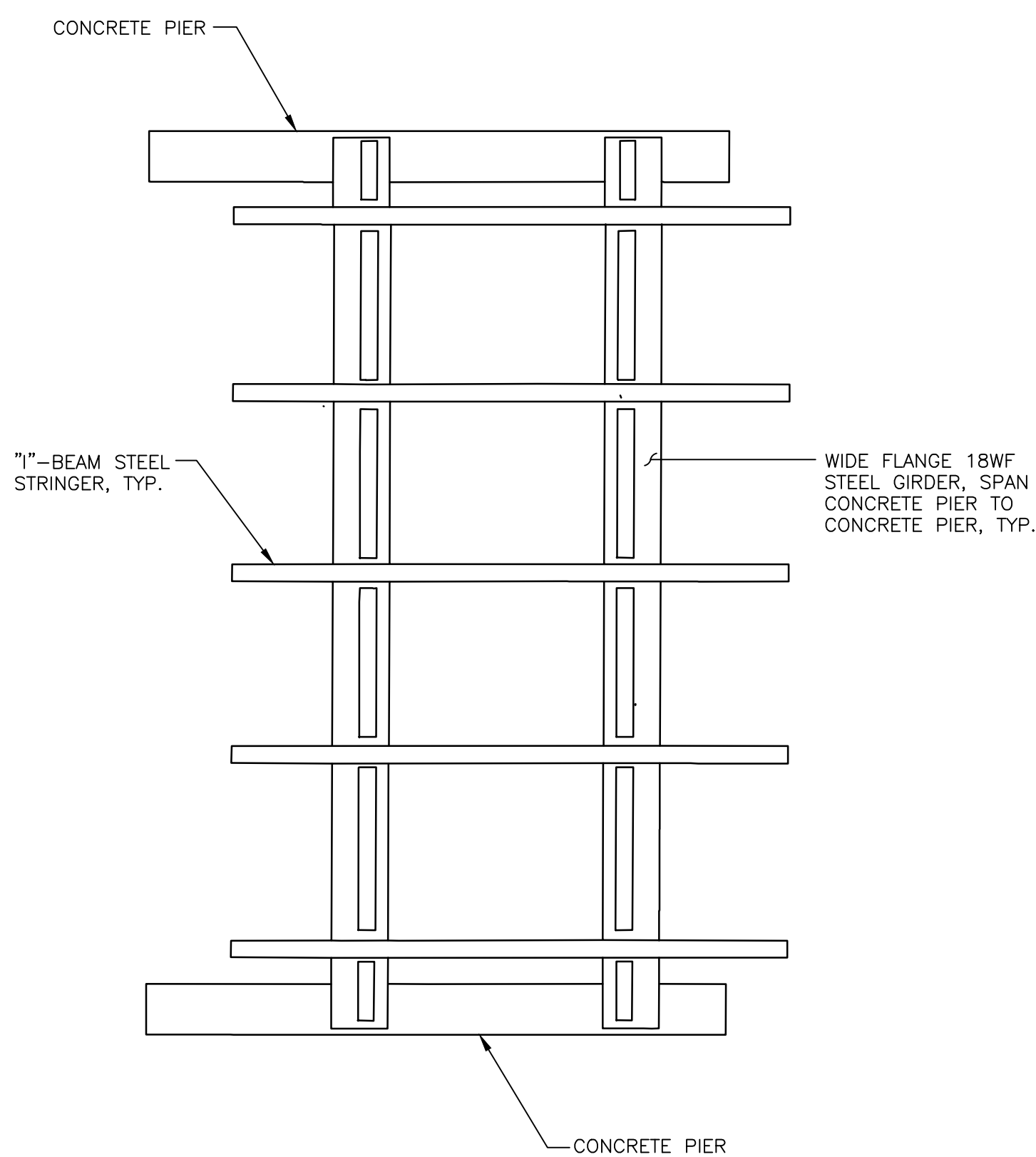
2 **BAY 8**
S-6 SCALE: N.T.S.



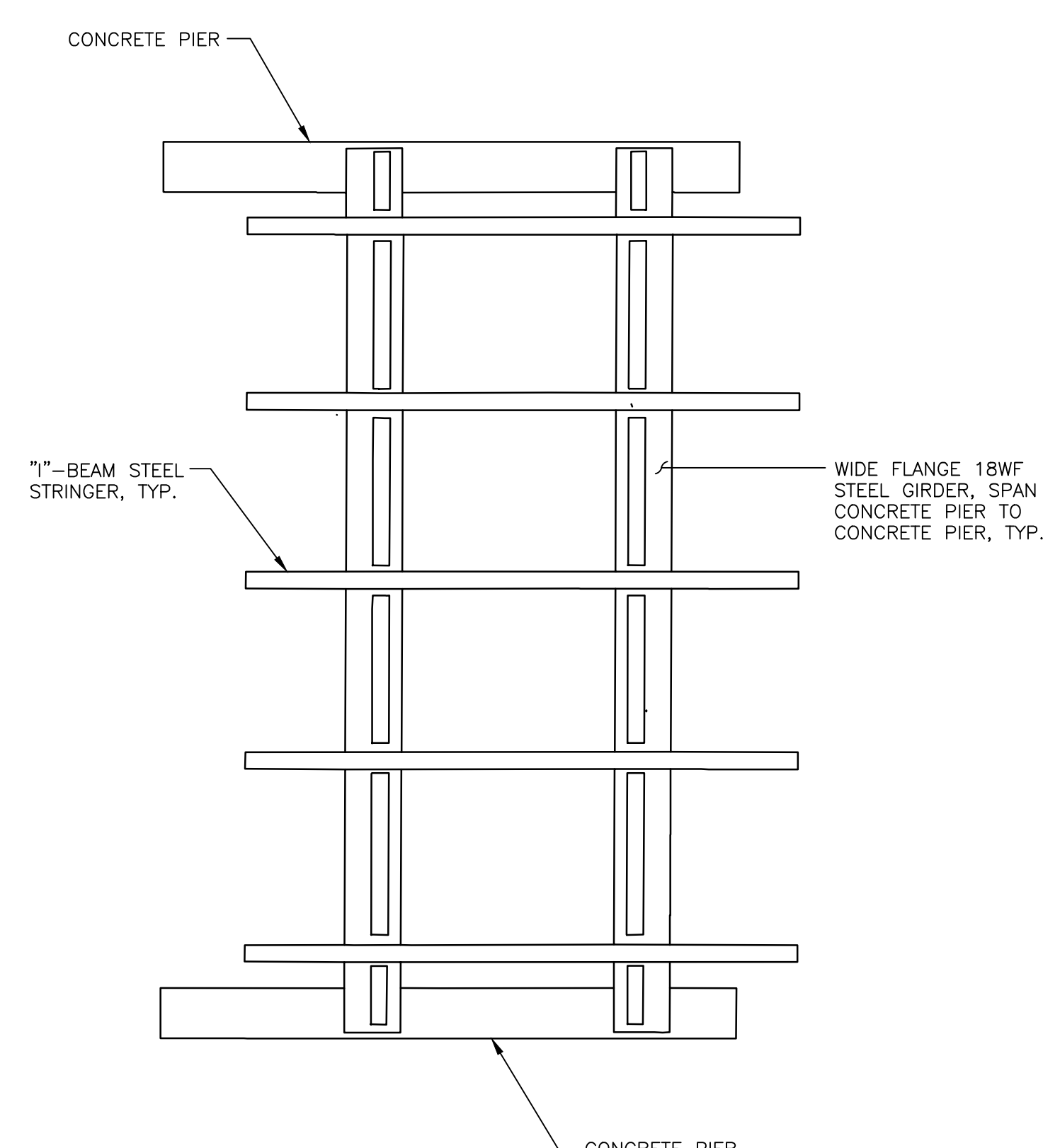
3 **BAY 9**
S-6 SCALE: N.T.S.



4 **BAY 10**
S-6 SCALE: N.T.S.



5 **BAY 11**
S-6 SCALE: N.T.S.



6 **BAY 12**
S-6 SCALE: N.T.S.

NO.	DATE	COMMENTS

**HILLSBOROUGH RIVER
GIRDER REPAIRS**
CITY OF TAMPA WATER DEPT.
306 EAST JACKSON STREET
TAMPA, FLORIDA 33602

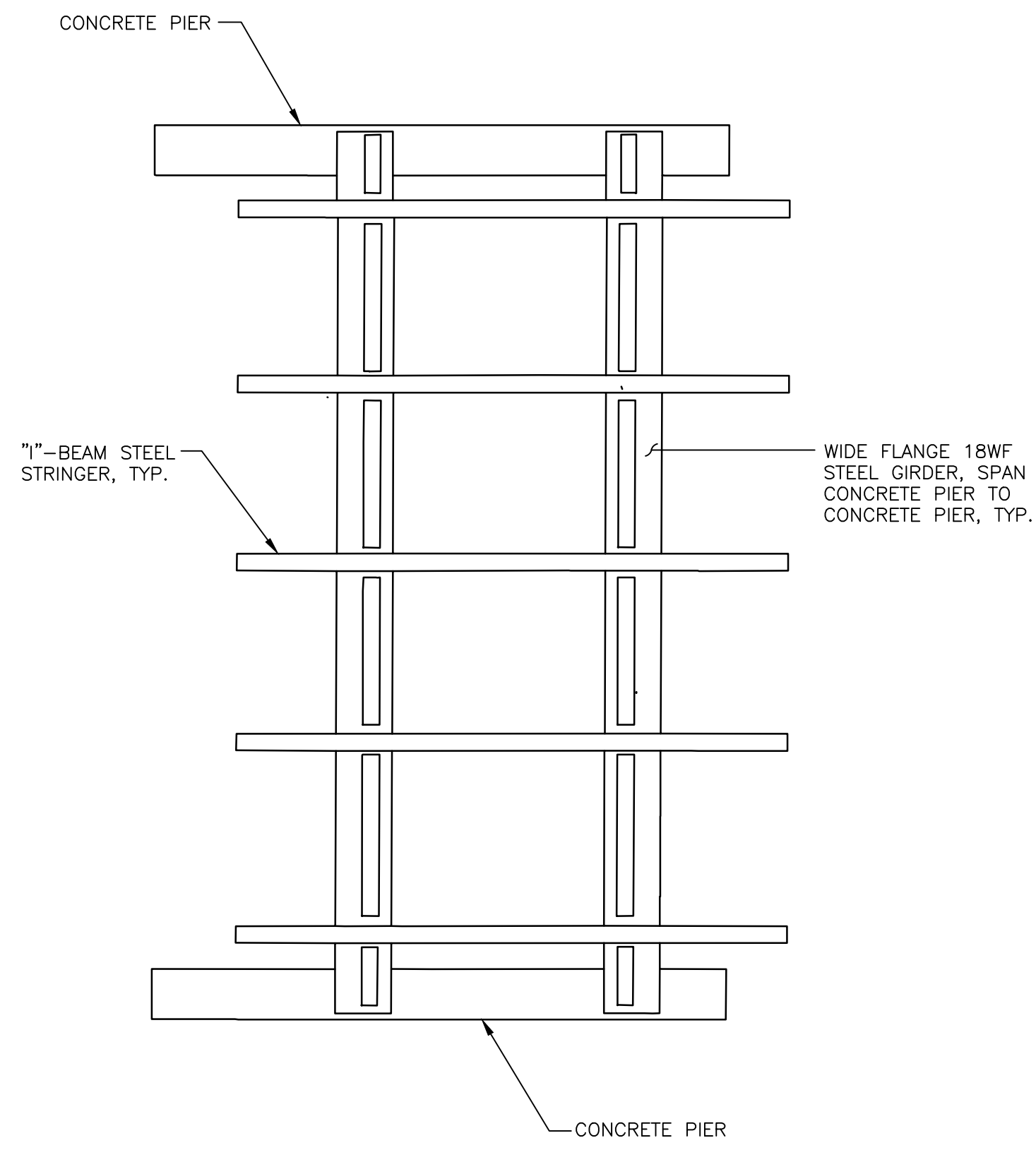
billerreinhardt
STRUCTURAL GROUP, INC.
3434 cowell avenue, suite 100, Tampa, florida 33614
telephone: 813.999.7209 fax: 813.931.1320
email: info@billerreinhardt.com
State of Florida Certificate of Authorization No. 9149

TO THE BEST OF THE ENGINEER'S KNOWLEDGE,
THE PLANS AND SPECIFICATIONS COMPLY WITH
THE APPLICABLE FEDERAL BUILDING CODES

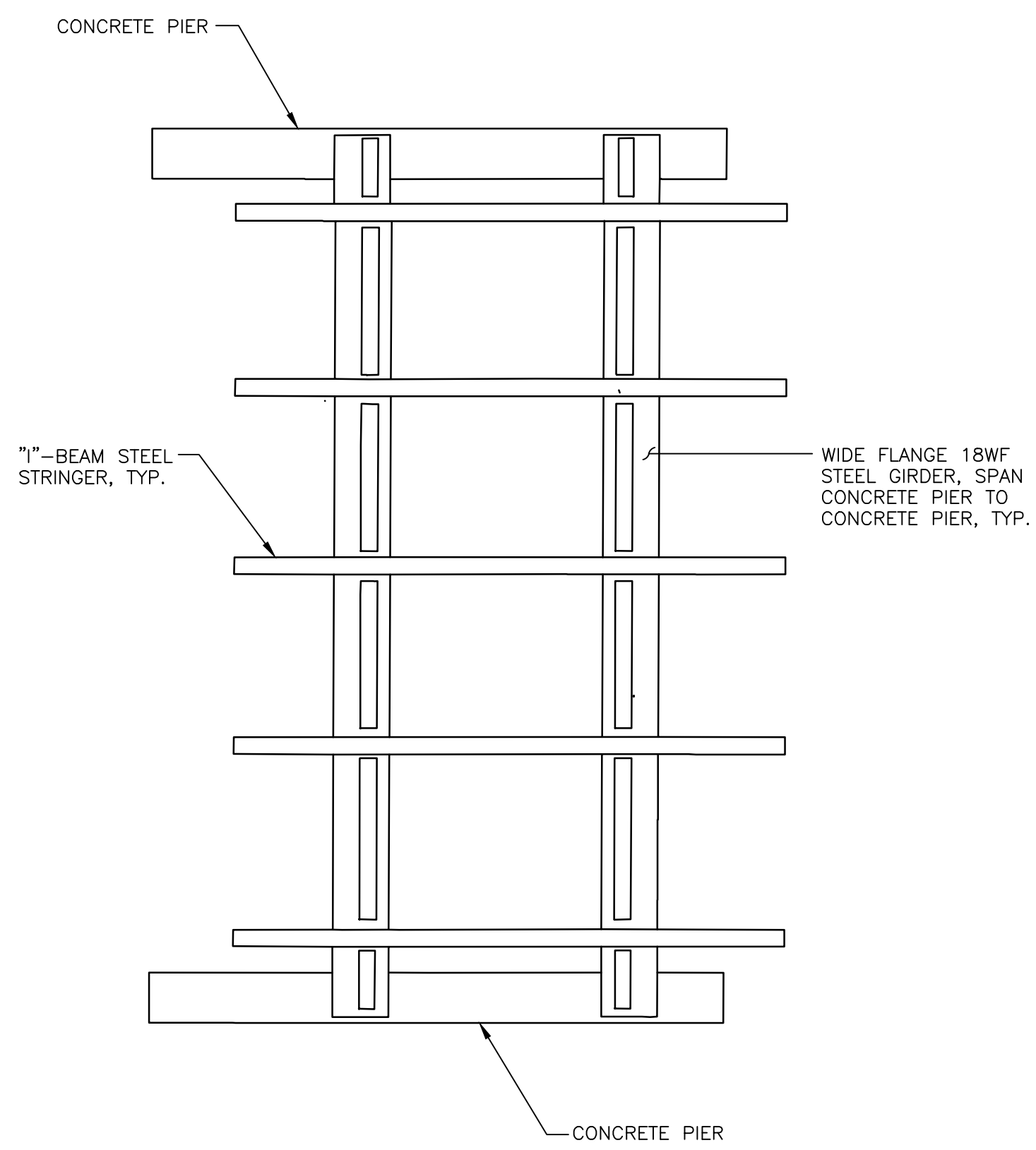
ROBERT J. REINHART
FL P.E. NO. 50076

PARTIAL PLAN
DATE: 02/24/14 DRAWN BY: KC RC
JOB NO: 13-772 DESIGN BY: RR SM

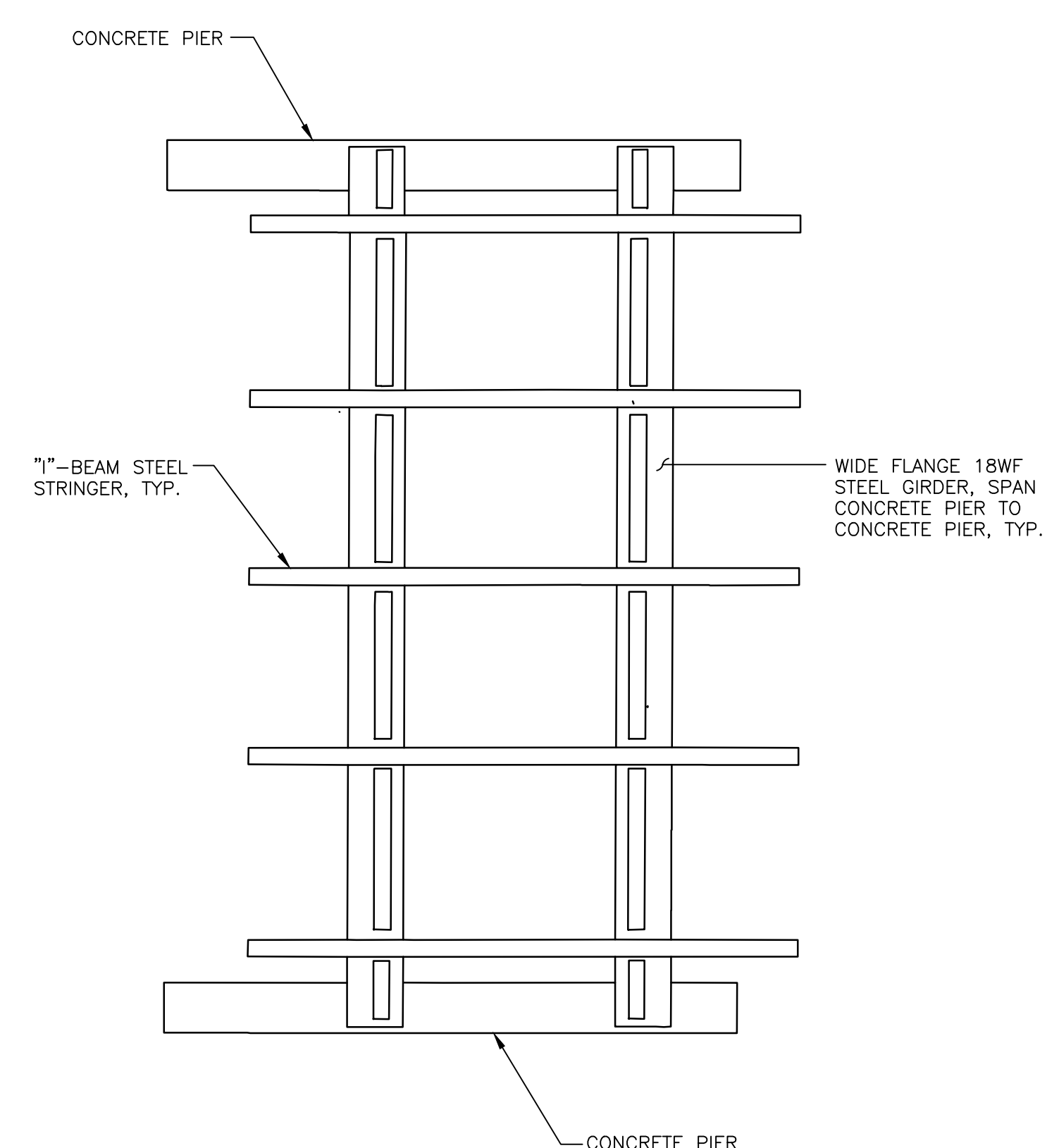
SHEET NO.
S-6



1 BAY 13
S-7 SCALE: N.T.S.



2 BAY 14
S-7 SCALE: N.T.S.



3 BAY 15
S-7 SCALE: N.T.S.

REVISIONS		COMMENTS
NO.	DATE	
△		
△		
△		

**HILLSBOROUGH RIVER
GIRDER REPAIRS**
CITY OF TAMPA WATER DEPT.
306 EAST JACKSON STREET
TAMPA, FLORIDA 33602

billerreinhardt
STRUCTURAL GROUP, INC.
3434 Colwell Avenue, Suite 100, Tampa, Florida 33614
Telephone: 813.999.7200 Fax: 813.931.1320
e-mail: bill@billerreinhardt.com
State of Florida Certificate of Authorization No. 9149

TO THE BEST OF THE ENGINEER'S KNOWLEDGE,
THE PLANS AND SPECIFICATIONS COMPLY WITH
THE APPLICABLE STRUCTURAL BUILDING CODES

ROBERT J. REINHART
FL P.E. NO. 50076

PARTIAL PLAN
DATE: 02/24/14 DRAWN BY: KC RC
JOB NO: 13-772 DESIGN BY: RR SM

SHEET NO.
S-7