

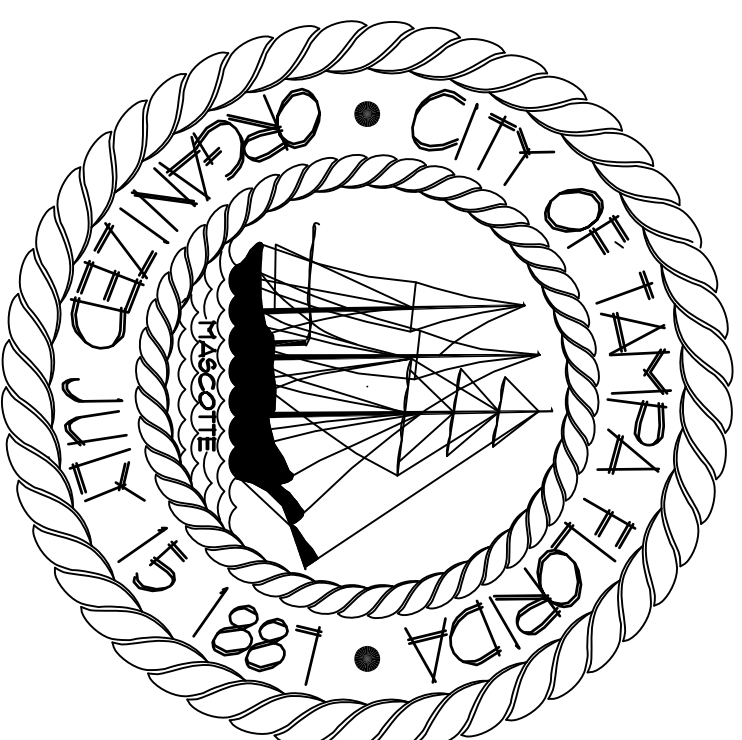
**The Enclosed Document Is Provided For Your Convenience.**

**Please Email ALL Questions:**

**[MailTo:ContractAdministration@TampaGov.net](mailto:ContractAdministration@TampaGov.net)**

**Please Let Us Know If You Plan To Bid**

City of Tampa  
Contract Administration Department  
306 E. Jackson St. #280A4N  
Tampa, FL 33602  
(813)274-8456



# BELMONT HEIGHTS LITTLE LEAGUE UPGRADES

## 2101 E. M.L.K. BLVD. TAMPA, FLORIDA 33610

### ABBREVIATIONS

AF	above finished floor	N9LL	insulate (d), (cm)
ADJT	adjustable	JT	joint
AC	air conditioning	JST	joist
ALT	alternate	LAV	lavatory
AB	anchor bolt	LIT	light
BIT	bituminous	M	manhole
BLKs	blocking	MO	masonry opening
BLKS	built up roofing	MECH	metal
CI/PC	cast-in-place concrete	NOD	nodular
CLG	calling tile	NC	not in contract
CLT	clearance	NTS	not to scale
CLR	column	PLA5	plaster
COL	column	PTC	pressure
CONC	concrete	PTC	polyvinyl chloride
CON	concrete masonry unit	PCF	pounds per cubic foot
CONT	control joint, continue	PFL	pounds per linear foot
CJ	dampproofing	PSI	pounds per square foot
DP	dead load	PC	precast concrete
DET	detail	PC	precast concrete
DM	dimension	PC	precast concrete
DR	door	PC	precast concrete
DRS	downdraft	PC	precast concrete
DUG	drawing	PC	precast concrete
DF	drinking fountain	PC	precast concrete
DFEC	drinking fountain electrical water cooler	PC	precast concrete
ELC	elevation	PC	precast concrete
EL	elevation	PC	precast concrete
EQ	existing	PC	precast concrete
EXST	existing	PC	precast concrete
EX	existing joint	PC	precast concrete
FE	finished floor elevation	PC	precast concrete
FF	finished floor line	PC	precast concrete
FLG	finishing	PC	precast concrete
FLD	finishing	PC	precast concrete
FTG	finishing	PC	precast concrete
FGB	furnished by others	PC	precast concrete
GAV	gauge, gauge	PC	precast concrete
GA	galvanized	PC	precast concrete
GC	general contractor	PC	precast concrete
GC	general contractor	PC	precast concrete
GB	grab bar	PC	precast concrete
GTPULL	gypsum dry wall	PC	precast concrete
HH	handhole	PC	precast concrete
HDU	handicapped	PC	precast concrete
HC	hollow core	PC	precast concrete
HT	hose bibb	PC	precast concrete
HT	hose bibb	PC	precast concrete

### SYMBOLS

**RESTROOM ACCESSORY**

**DRAWING NOTE**

**DOOR NUMBER**

**ROOM TITLE**

**SECTION CUT**

**WINDOW TYPE**

**ROOM NUMBER**

**DETAIL**

**DESCRIPTIVE TITLE**

### PROJECT NOTES

- ALL CONSTRUCTION SHALL COMPLY WITH APPLICABLE CODES AND STANDARDS, INCLUDING BUT NOT LIMITED TO ALL STATE LAWS, LOCAL ORDINANCES, UTILITY COMPANY, FLORIDA ACCESSIBILITY CODE FOR BUILDING CONSTRUCTION, THE STANDARD MECHANICAL CODE, THE STANDARD PLUMBING CODE, THE OCCUPATIONAL SAFETY AND HEALTH ACT, NFPA AND THE CURRENTLY ADOPTED STANDARD BUILDING CODE.
- CONTRACTOR SHALL REMOVE ALL DEBRIS FROM THE PROJECT SITE AS REQUIRED TO MAINTAIN A SAFE AND ORDERLY WORK ENVIRONMENT.
- GENERAL CONTRACTOR SHALL VERIFY ALL DIMENSIONS AND EXISTING CONDITIONS PRIOR TO AND DURING CONSTRUCTION.
- DEMOLITION WORK SHALL NOT BE LIMITED TO THESE DOCUMENTS TO COMPLETE PROJECT AS ILLUSTRATED. REMOVE ITEMS NECESSARY TO ALLOW FOR NEW CONSTRUCTION.
- EXISTING SURFACES ( WALLS, CEILING, ETC. ) SHALL BE PROTECTED DURING CONSTRUCTION. THE CONTRACTOR SHALL CLEAN SURFACES AFTER CONSTRUCTION, REPAIR, PAINT AND OR REPLACE AREAS DAMAGED AS A RESULT OF PERFORMANCE OF THE WORK.
- ALL WORK SHALL BE COORDINATED WITH THE CITY OF TAMPA'S ARCHITECTURAL REPRESENTATIVE.

- THE CONTRACTOR SHALL SECURE ALL OPENINGS UNDER CONSTRUCTION AT THE END OF EACH WORKING DAY.
- ITEMS OR AREAS DAMAGED BY THE CONTRACTOR OR SUBCONTRACTORS SHALL BE REPAIRED OR REPLACED AT THE CONTRACTOR'S EXPENSE.
- IN GENERAL, ON SITE WORK SHALL NOT START UNTIL ALL MATERIAL IS AVAILABLE FOR INSTALLATION ONLY LIMITED WORK (NOT INTERFERING WITH THE USE OF THE KITCHEN) WILL BE ALLOWED PRIOR TO ALL MATERIAL BEING AVAILABLE TO MINIMIZE THE LENGTH OF TIME THE KITCHENS ARE OUT OF SERVICE.
- NO STORAGE IS AVAILABLE INSIDE STATION FOR CONTRACTOR USE.
- WORK CAN NOT INTERFERE WITH ONGOING OPERATIONS OF EACH STATION. COORDINATE EXTERIOR STORAGE/STAGING AREAS WITH C.O.T. REPRESENTATIVE.

### PROJECT NOTES

**FIRM NOTE**

COMMUNITY-PANEL NUMBER  
201005.00U

**FLOOD ZONE - A9**

### CODE REFERENCES

- CLASSIFICATION:  
• OCCUPANCY: GROUP B  
CONSTRUCTION TYPE:  
• TYPE III, A, SPRINKLERED
- EXIT REQUIREMENTS:  
• MINIMUM CORRIDOR WIDTH - 44"  
• MAXIMUM TRAVEL DISTANCE - 200 FT.  
• COMMON PATH OF TRAVEL - 75 FT.  
• DEAD END CORRIDOR - 20 FT.
- FIRE RATING/CONSTRUCTION OF:  
• INTERIOR BEARING WALLS - NC  
• ROOF & ROOFCEILING - NC  
• FLOOR - NC
- INTERIOR FINISHES:  
• ALL SPACES: CLASS "C" MATERIALS MINIMUM  
• FLAME SPREAD: 75 - 200  
• SMOKE DEVELOPED: 0 - 450

TO THE BEST OF OUR KNOWLEDGE, INFORMATION AND BELIEF, THESE DOCUMENTS COMPLY WITH CURRENTLY ADOPTED CODES.  
ALL PROPOSED CONSTRUCTION SHALL COMPLY WITH CURRENTLY ADOPTED CODES, STANDARDS AND ACTS WHICH INCLUDE, BUT ARE NOT LIMITED TO:  
• FLORIDA FIRE PREVENTION CODE 2007  
• FLORIDA BUILDING CODE 2008  
• FLORIDA STATUTE #33, WHICH INCLUDES:  
• STATE FIRE MARSHALL'S RULES AND REGULATIONS  
• NATIONAL ELECTRICAL CODE, 2008  
• NFPA 13, INSTALLATION OF SPRINKLER SYSTEMS  
• NFPA 20, INSTALLATION OF SECONDARY PUMPS  
• NFPA 24, PRIVATE FIRE SERVICE MAINS  
• NFPA 90A, INSTALLATION OF AIR-CONDITIONING AND VENTILATION SYSTEMS, 1996  
• NFPA 1 & 101 ( 2009 )

**WIND SPEED : 151 MPH**  
**EXPOSURE CATEGORY - B**  
**IMPORTANCE FACTOR - 1.15**  
**BUILDING CATEGORY - IV**

**CONTRACT ADMIN. FILE NUMBER**

**CONTRACT ADMIN. NUMBER**

14-C-55 / 0000000

### ARCHITECT

THOMAS A. HESTER, AIA - PROJECT ARCHITECT  
DPR #A931143  
306 E. JACKSON ST. - 4N  
TAMPA, FL 33602  
PHONE (813) 214-5678 / FAX (813) 214-8080

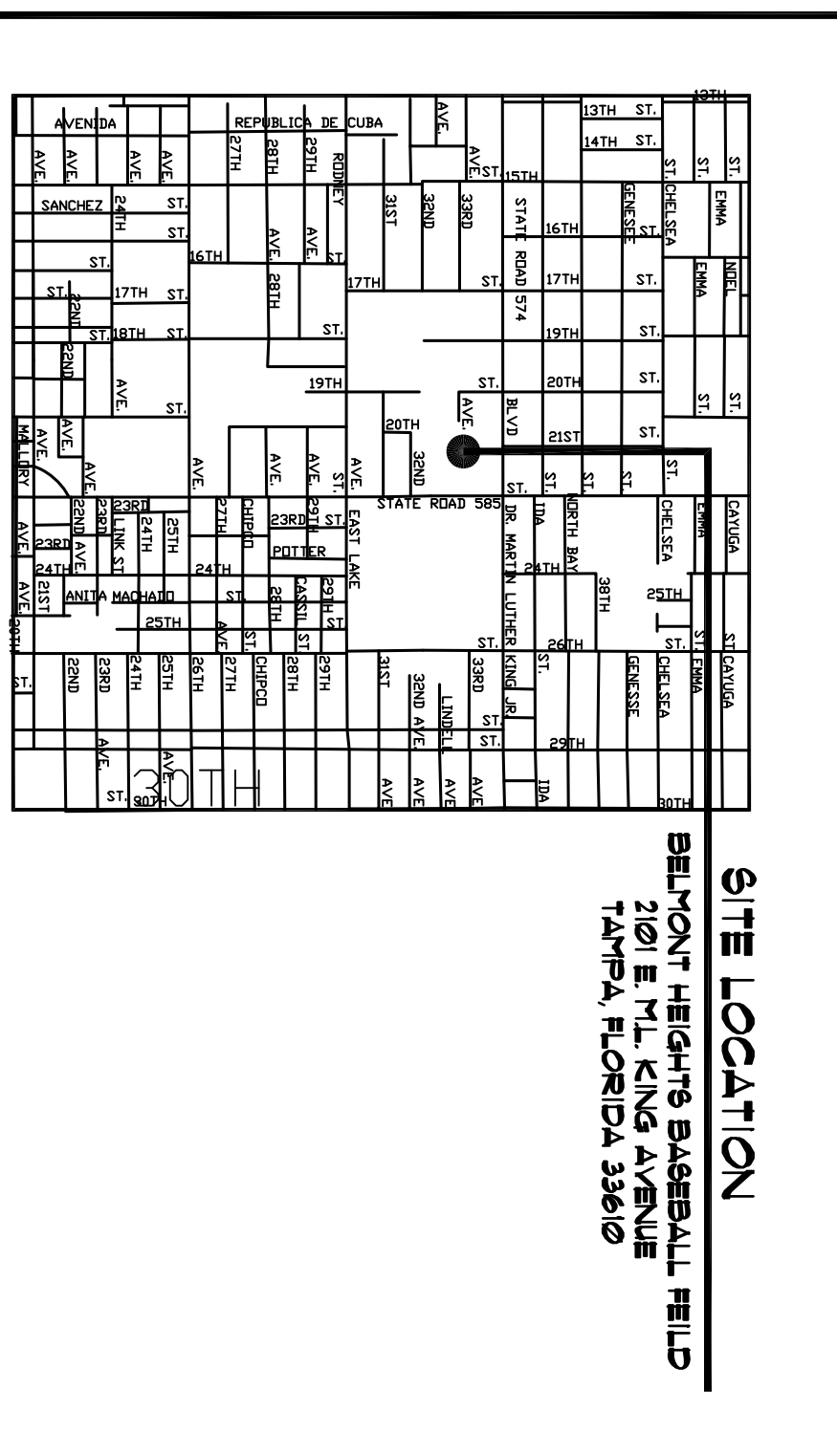
### CONSULTANTS

**INDEX**

**ARCHITECTURAL**

G-01 COVER SHEET / GENERAL INFORMATION  
A-11 SITE PLAN  
A-21 INFORMATION PLANS & ELEVATIONS  
A-22 ELECTRICAL RISER & NOTES

### LOCATION MAP



### LEGAL DESCRIPTION

SEC 7, T29S, R19E  
ATLAS SHEET NO. G-13

### SQUARE FOOTAGE

SHEET NUMBER  
**G-0.1**  
OF

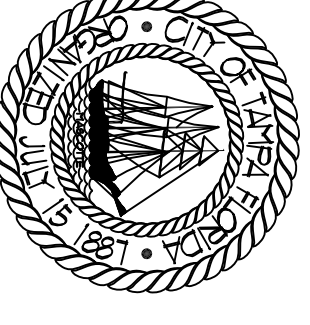
### ISSUE DATE

DECEMBER 19, 2014









**CITY OF TAMPA**  
 CONTRACT ADMINISTRATION  
 DEPARTMENT  
 PLANNING AND DESIGN DIVISION  
 305 E JACKSON STREET 4 NORTH  
 TAMPA, FLORIDA 33602  
 TEL: 813.274.8800  
 WWW.CITYOFTAMPA.COM

James E. Jackson, Jr., AIA, NOMA  
 City Architect  
 Edward D. Rice, AIA  
 Deputy City Architect  
 Kevin L. Hendon, AIA  
 Project Architect  
 Thomas A. Heiser, Sr., AIA, NOMA  
 Project Architect  
 David K. Pugh  
 Project Architect  
 Kerry C. Tillman  
 Design Technician  
 Jerry P. Sanders  
 Design Technician  
 Brian K. Thomas, LEED AP  
 Design Technician

**MEP CONSULTANT**

**STRUCTURAL CONSULTANT**

**CIVIL CONSULTANT**

**LANDSCAPE CONSULTANT**

**BEAUMONT HEIGHTS LITTLE LEAGUE**  
 UPRADDS  
 201 E. MILBING BLVD.  
 TAMPA, FLORIDA 33609

**DRPW FILE NUMBER**  
 X

**DRPW NUMBER**  
 X

**ISSUE DATE**  
 DECEMBER 19, 2014  
**DRAWN BY**  
 JERRY P. SANDERS

**REVISIONS**

**SEAL**

**SCALE VARIOUS**

**FLOOR PLANS**

**SHEET NUMBER**  
 A2.1

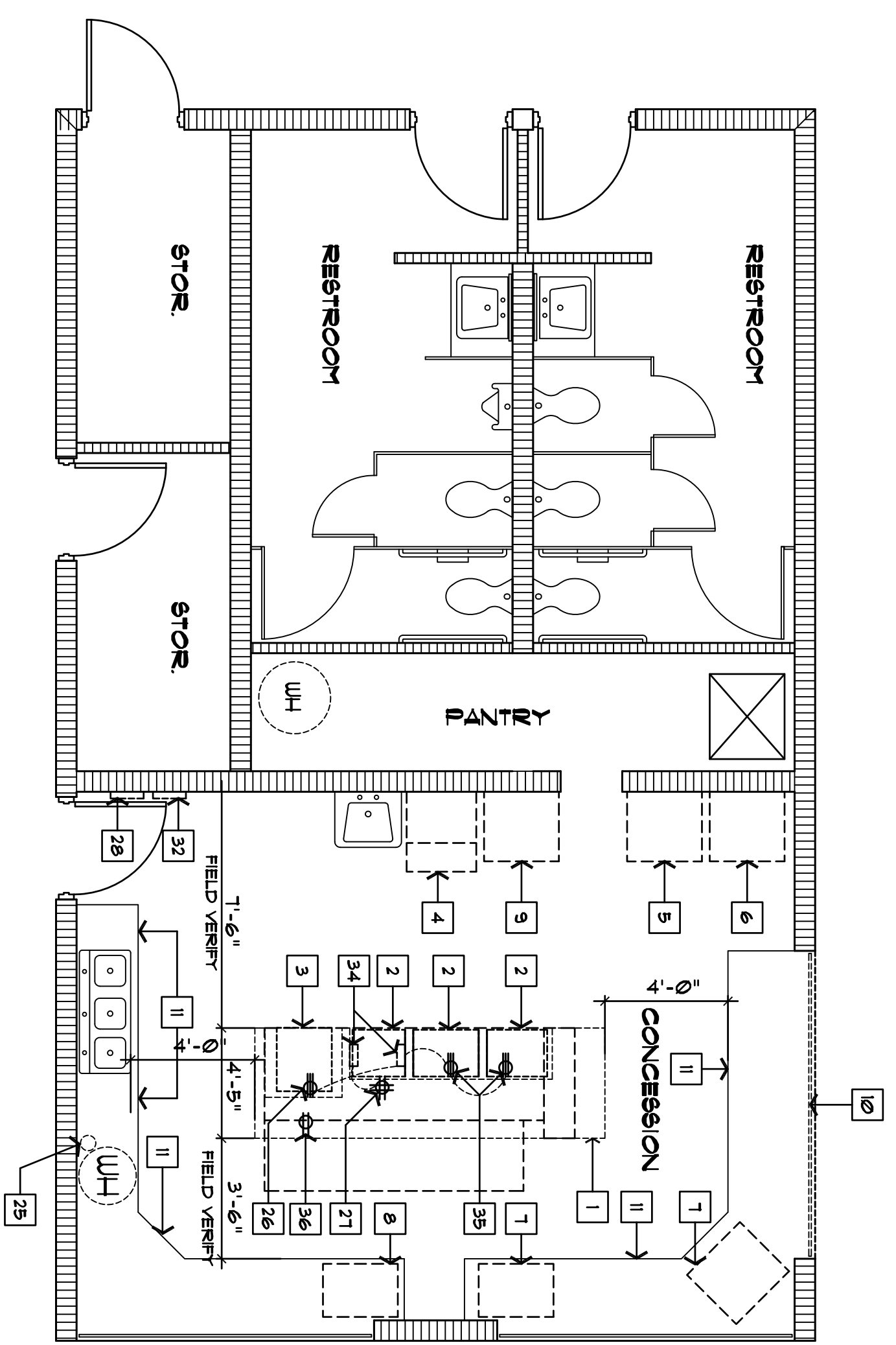
X OF X

**GENERAL NOTES**

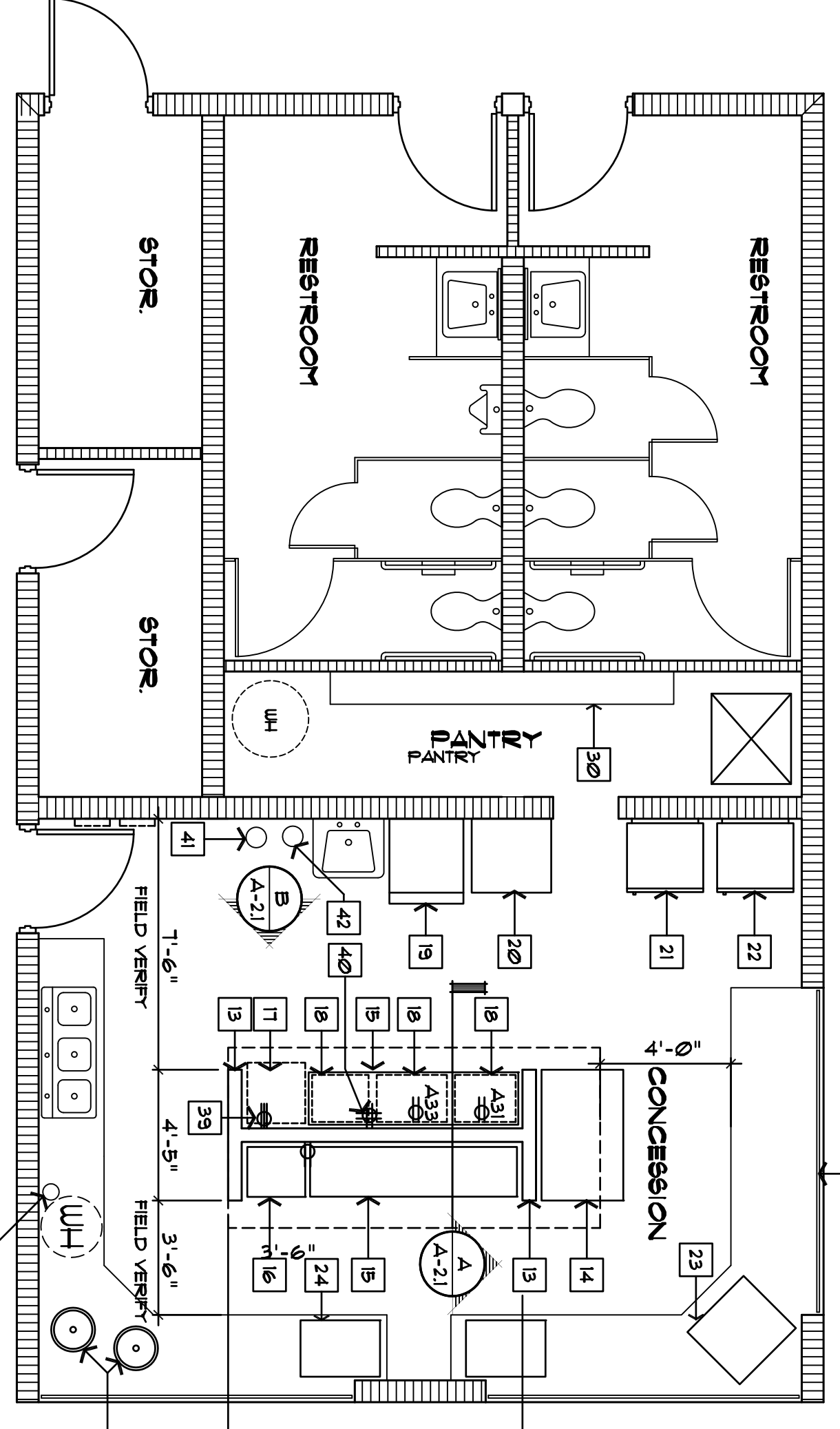
- COLOR FOR ALL APPLIANCES TO BE SELECTED FOR STANDARD RANGE OF COLORS.
- CONTRACTOR TO PROVIDE SHOP DRAWINGS FOR ALL ITEMS OF WORK NOT IN CONTRACT.
- 2ND FLOOR OF CONCESSION BUILDING

**KEY NOTES**

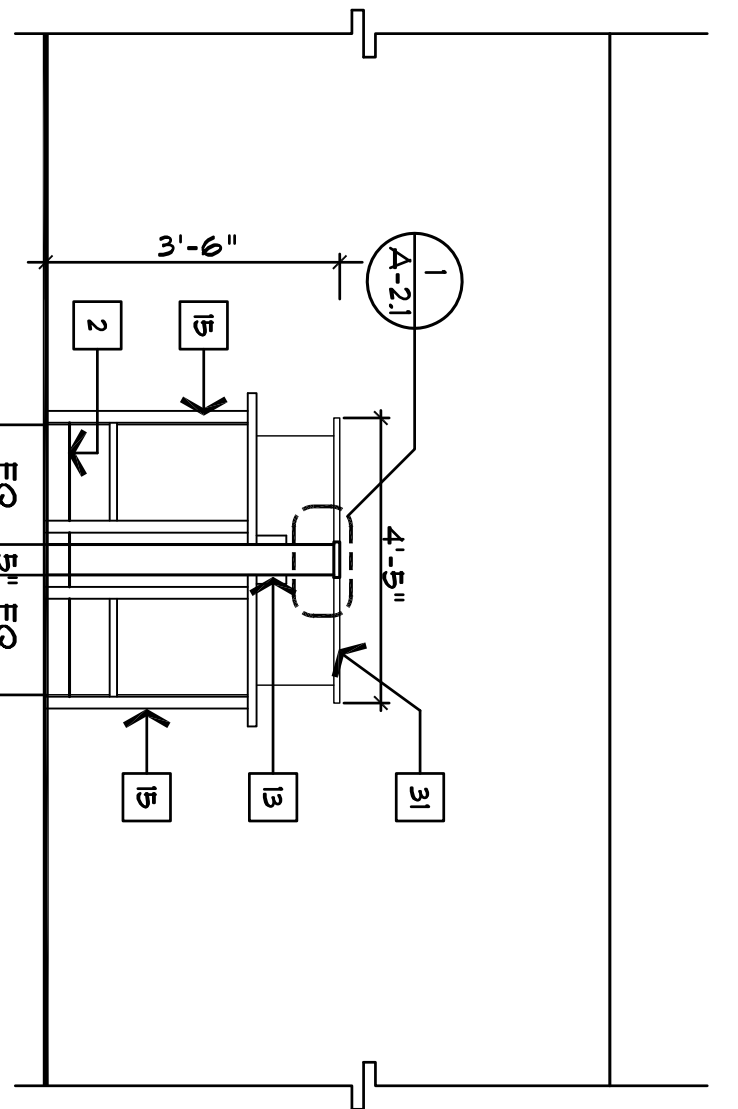
- REMOVE EXISTING COUNTER AND STORAGE
- REMOVE EXISTING DOUBLE FRIGERS (3)
- REMOVE EXISTING STOVE
- REMOVE EXISTING ICE MACHINE
- REMOVE EXISTING STAND - UP BEVERAGE COOLER
- REMOVE EXISTING REFRIGERATOR
- REMOVE EXISTING REFRIGERATOR
- REMOVE EXISTING COUNTER TOP DRINK WATERER
- REMOVE EXISTING CHEST FREEZER
- EXISTING ROLL-UP SHUTTER
- REMOVE EXISTING CABINET DOORS
- PROVIDE NEW SHUTTER 120V X 41H (VERIFY) SIMILAR TO WINDOW DOOR MODEL 8225 OR EQUAL
- NEW 42" HIGH PARTITION WITH 20 GAUGE 3 1/2" STUDS 16" OC. W/ 3/4" TYP. X STPBD. EA. SIDE PAINTED.
- NEW 30" X 48" STAINLESS STEEL WORK TABLE WITH UNDER SHELF AND 5" BACK SPLASH ADVANCE TABCO MODEL NO. K99 - 246 OR EQUAL.
- NEW 24" X 30" STAINLESS STEEL TABLE ADVANCE TABCO MODEL NO. K99 - 240 OR EQUAL.
- NEW ELECTRIC STOVE GE MODEL JB T60DN OR EQUAL.
- NEW ELECTRIC DOUBLE FRIGERS (3) ADVORAT MODEL DF / 61/7 OR EQUAL.
- NEW AUTOMATIC ICE MACHINE.
- MANITOUOC INDIGO SERIES MODEL 322 OR EQUAL.
- NEW UPRIGHT FREEZER GE MODEL NO. FLP1919VBUU OR EQUAL.
- NEW UPRIGHT BEVERAGE REFRIGERATOR HARBO MODEL NO. 9624T OR EQUAL.
- NEW REFRIGERATOR GE MODEL G6HF6GX OR EQUAL.
- NEW COUNTER TOP DRINK COOLER AHT MODEL NO. CTB80 OR EQUAL.
- NEW COUNTER TOP FOOD WATERER ADVORAT MODEL NO. HD - 36 OR OR EQUAL.
- EXISTING WALL MOUNTED ANSBL 57STEP TO REMAIN.
- EXISTING 220V RECEPTACLE TO BE RELOCATED IN NEW WALL.
- EXISTING 120V QUAD RECEPTACLE TO BE RELOCATED IN NEW WALL.
- EXISTING PANEL "A".
- VINTL BASE
- PROVIDE VINTL COATING WIRE SHELVES (B) ROWS WITH HEAVY DUTY BRACKET.
- 1" THICK BY 5" GRANITE SILL CONTINUES SET IN MASTIC.
- EXISTING PANEL "K"
- NEW 4-QUART COMMERCIAL CROCK POT U687 BEND MODEL NO. 84394
- REMOVE EXISTING UNDER COUNTER ELECTRICAL JUNCTION BOXES
- REMOVE EXISTING OUTLET AND CIRCUITS FROM UNDER COUNTER CAP CIRCUIT AT PANEL.
- EXISTING 120V DUPLEX RECEPTACLE TO BE RELOCATED IN NEW WALL.
- EXISTING HOOD
- P.T. 2X VALUER CONTINUOUS
- RELOCATED 220V OUTLET
- PROVIDE NEW TYPE "K" EXISTING/NEW UL RATED K 1516 IN STAINLESS STEEL CERTAI CONTAINER BY LARSEN OR EQUAL WITH WALL MOUNTED BRACKET.
- EXISTING FIRE EXTINGUISHER



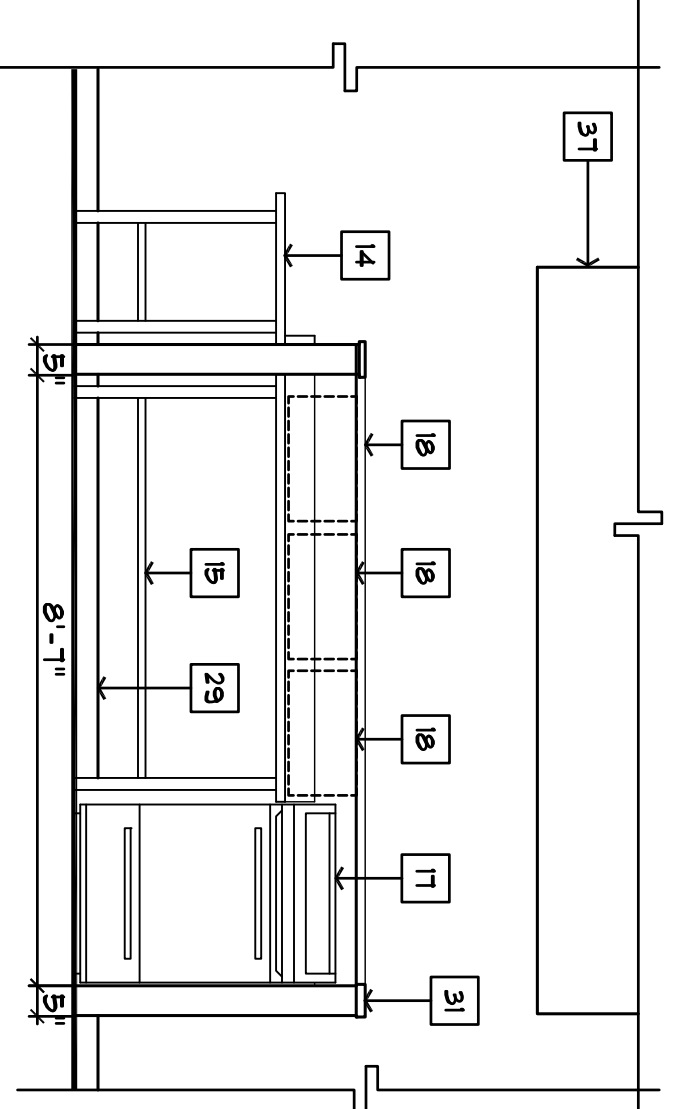
**FLOOR DEMOLITION PLAN**  
 SCALE 1/4" = 1'-0"



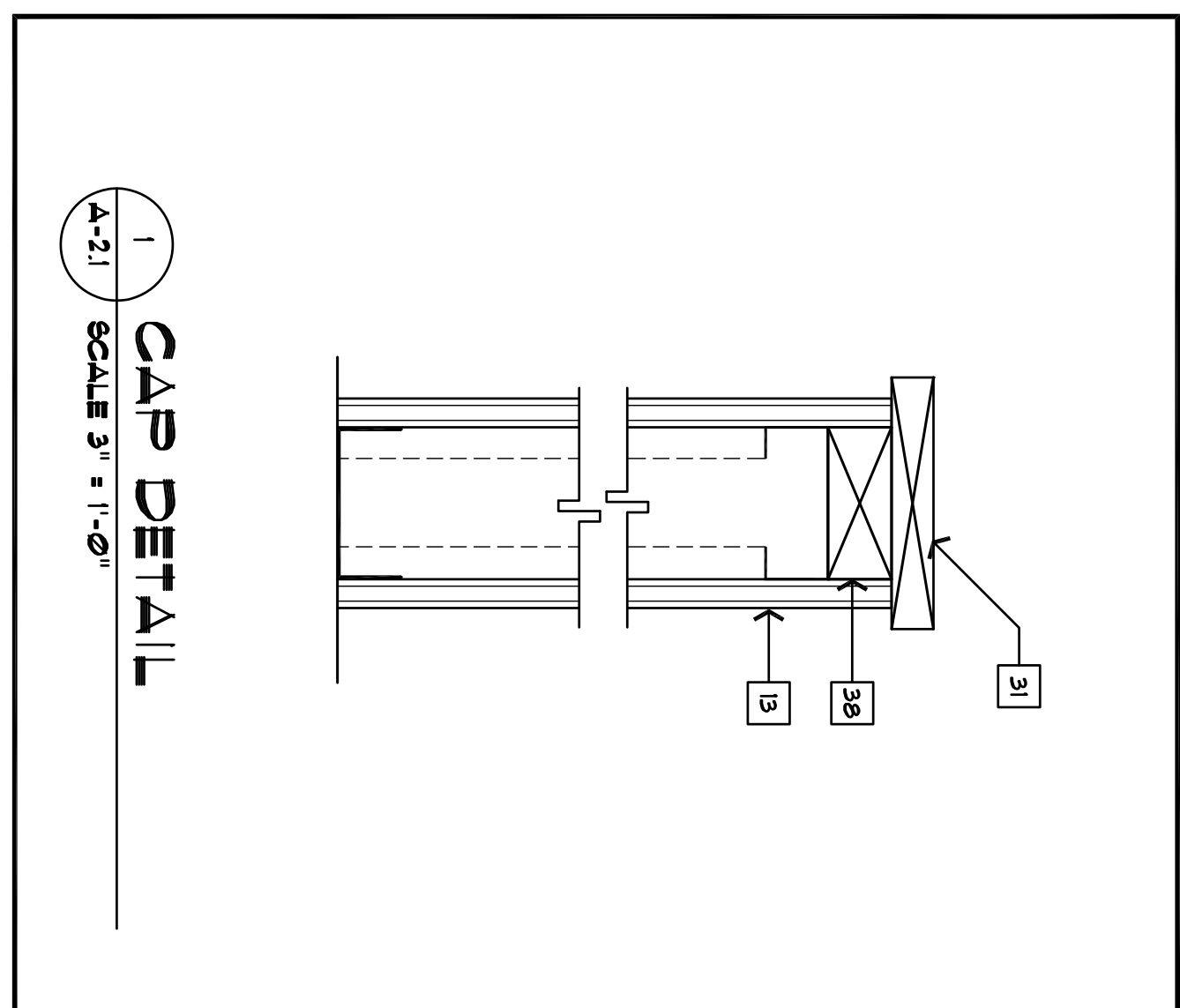
**FLOOR RENOVATION PLAN**  
 SCALE 1/4" = 1'-0"



**A ISLAND ELEVATION**  
 SCALE 3/8" = 1'-0"



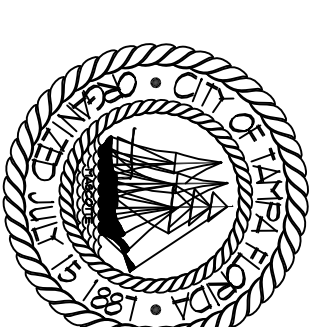
**B ISLAND ELEVATION**  
 SCALE 3/8" = 1'-0"



**1 CAP DETAIL**  
 SCALE 3/4" = 1'-0"

**GENERAL NOTES**

1 ELECTRICAL DRAWING FOR PURPOSES: DRAWING DOCUMENT



**CITY OF TAMPA**  
 CONTRACT ADMINISTRATION  
 PLANNING AND DESIGN DIVISION  
 305 E JACKSON STREET 4 NORTH  
 TAMPA, FLORIDA 33602  
 TEL: 813.274.8800  
 WWW.CITYOFTAMPA.ORG

**KEY NOTES**

James E. Jackson, P.E., AIA, NCMMA  
 City Architect  
 Edward D. Rice, AIA  
 Deputy City Architect  
 Keith L. Hendrix, AIA  
 Project Architect  
 Thomas A. Harter, Sr., AIA, NCMMA  
 Project Architect  
 David K. Pugh  
 Principal Electrical Drafting  
 Gregory C. Timpan  
 Designer  
 Jerry P. Sanders  
 Designer  
 Dennis Tomkowiak  
 Designer  
 Bryan K. Thomson, EED, AP  
 Designer

**MEP CONSULTANT**

**STRUCTURAL CONSULTANT**

**CIVIL CONSULTANT**

**LANDSCAPE CONSULTANT**

**BELMONT HEIGHTS LITTLE LEAGUE UPGRADES**  
 201 E. ALIX BLVD.  
 TAMPA, FLORIDA 33609

**DRW FILE NUMBER**

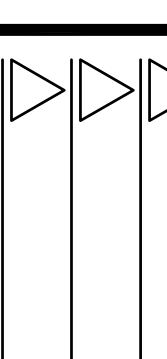
**DRW NUMBER**

**ISSUE DATE**

**DECEMBER 18, 2014**

**DRAWN BY**  
**JERRY P. SANDERS**

**REVISIONS**



**SEAL**

**SCALE N.T.S.**

**EXISTING ELECTRICAL INFO.**

**SHEET NUMBER**

**A.2.2**

**X OF X**

**PANEL ' A ' SCHEDULE**

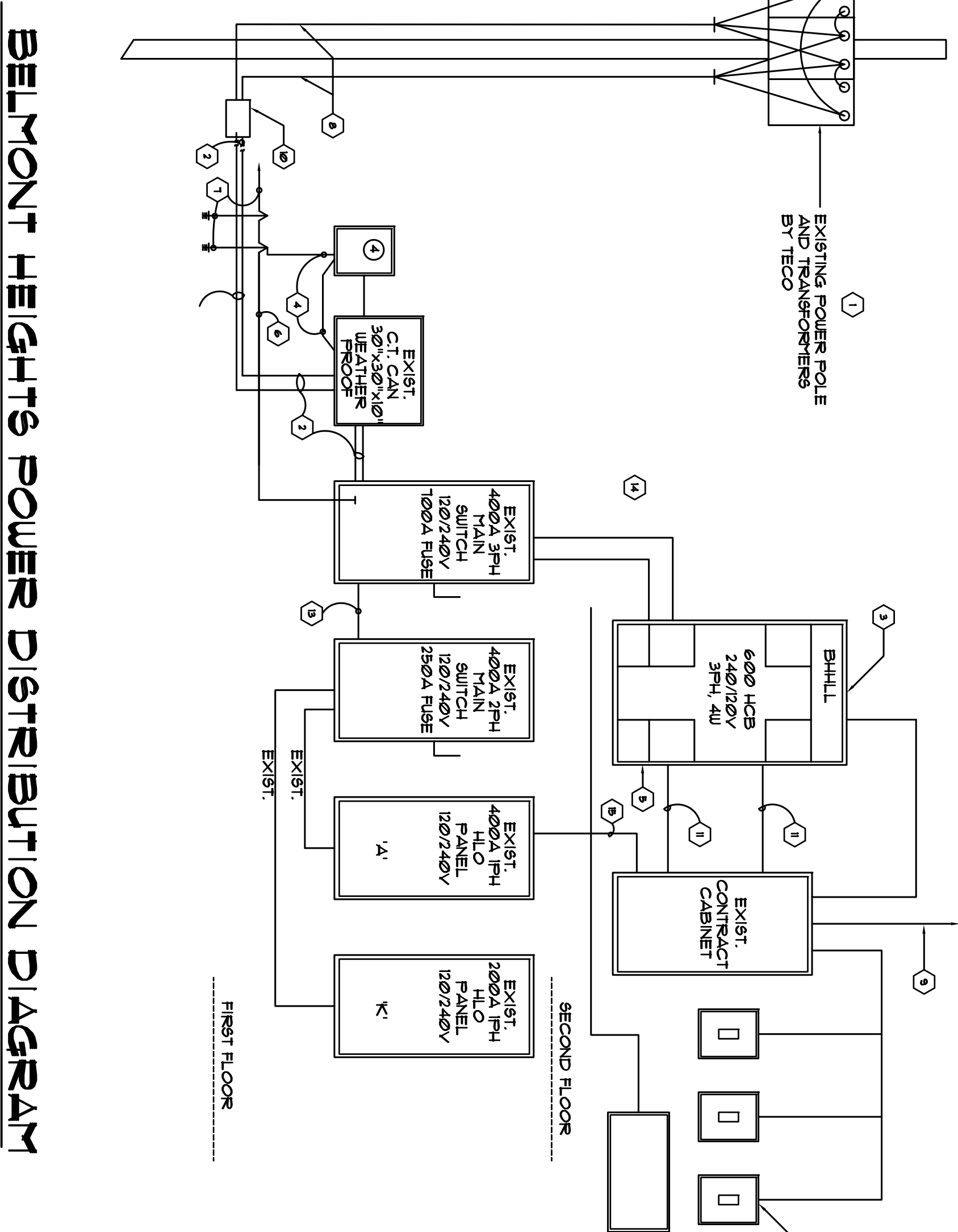
PANEL ' A ' 120/240 VV, 1Ø, 3W, 4ØØ A, M.L.C. W/ 1-125A/ 2 PHASE SUB - HEAD BREAKER 1ØØØØ A.I.C.

CKT No. POLES	AMPS	WIRE SIZE & CONDUIT	REMARKS	CKT	No. OF POLE	AMPS	WIRE SIZE & CONDUIT	REMARKS
1	20	#2 - 1/2" C	LIGHT KIT, 4 OVERLUNG	2	1	20	#2 - 1/2" C	LIGHTS - MEN TOILET
3	1	2Ø	LIGHTS - 2ND FL OVERLUNG	4	1	2Ø	#2 - 1/2" C	LIGHTS - WOMEN TOILET
5	1	2Ø	LIGHTS - GEN. PUMP RM	6	1	2Ø	#2 - 1/2" C	REC. 2ND FL. FILT RM
7	1	2Ø	LIGHTS - 2ND FL. FILT RM	8	1	2Ø	#2 - 1/2" C	REC. 2ND FL. GANP RM
9	2	3Ø	REC. 2ND FL. G.N. P. RM	1Ø	1	2Ø	#2 - 1/2" C	REC. 1ST FL. B. RM 4 UP
11	1	2Ø	SCORE BOARD 9R	12	1	2Ø	#2 - 1/2" C	REFRIGERATOR
13	1	2Ø	REC. KITCHEN	14	1	2Ø	#2 - 1/2" C	FREEZER
15	1	2Ø	ICE MAKER	16	1	2Ø	#2 - 1/2" C	DISHWASHER
17	1	2Ø	FOR COFFIN MACHINE	18	1	2Ø	#2 - 1/2" C	REC. KITCHEN
19	1	2Ø	TOILETS - EXPLAN. NO.1	2Ø	1	2Ø	#2 - 1/2" C	REC. P.A. 8V15TH
21	1	2Ø	HALLOW SCORE BOARD	22	2	3Ø	#2 - 1/2" C	HOOD
23	1	2Ø		24				
25	1	2Ø	#2 - 1/2" C	26	2	3Ø	#2 - 1" C	NEW BATTING CAGE LIGHTING
27	1	2Ø	#2 - 1/2" C	28				
29	1	2Ø	#2 - 1/2" C	3Ø	2	1Ø		GRABER
31	1	2Ø	#2 - 1/2" C	32				
33	1	2Ø	#2 - 1/2" C	34				UPSTAIRS A/C
35	1	2Ø	#2 - 1/2" C	36				
37	1	2Ø	#2 - 1/2" C	38				
39	2	4Ø	WATER HEATER	4Ø				

**PANEL ' K ' SCHEDULE**

PANEL ' K ' 120/240 VV, 1Ø, 3W, 2ØØ A, M.L.C. - 1ØØØØ A.I.C. W/ 2 POLE, 1Ø24Ø V

CKT No. POLES	AMPS	WIRE SIZE & CONDUIT	REMARKS	CKT	No. OF POLE	AMPS	WIRE SIZE & CONDUIT	REMARKS
1	1	2Ø	BATH HAND DRYER	2	2	3Ø	#2 - 1/2" C	#1 FRYER
3	1	2Ø	BATH HAND DRYER	4	2	3Ø	#2 - 1/2" C	#1 FRYER
5	1	2Ø	BATH HAND DRYER	6	2	3Ø	#2 - 1/2" C	RANGE
7	1	2Ø	HEAT LAMP	8	2	3Ø		RANGE
9	2	3Ø	HEAT LAMP	1Ø	2	3Ø		GRABER
11	2	3Ø	#1 FRYER	12				



**BELMONT HEIGHTS POWER DISTRIBUTION DIAGRAM**

**DISTRIBUTION KEY NOTES**

- EXISTING TAMPA ELECTRIC COMPANY POLE MOUNTED TRANSFORMER ( SECONDARY: 24Ø V/ 12ØV, 3 PHASE & WIRE, 6Ø HERTZ ) AVAILABLE SHORT CIRCUIT CURRENT ON SECONDARY SIDE BLUISH OF TRANSFORMER 31 221 AMPS, SYMMETRICAL. CALCULATED AVAILABLE SHORT CIRCUIT CURRENT AT LINE SIDE OF SERVICE ENTRANCE MAIN CIRCUIT BREAKER 16, 913 AMPS, SYMMETRICAL. MAXIMUM LET- THROUGH CURRENT ON LOAD SIDE OF SERVICE ENTRANCE MAIN CIRCUIT BREAKER 16, 913 AMPS, SYMMETRICAL. ALL CIRCUIT BREAKERS ARE 3Ø AND ALL SERVICE ENTRANCE MAIN CIRCUIT BREAKERS ARE 3Ø AND ALL TRANSFORMER BEING INSTALLED WITH UTILITY COMPANY PRIOR TO ORDERING EQUIPMENT OR COMMENCING WORK.
- EXISTING SERVICE ENTRANCE CONDUCTORS 2 SET EACH 4 #5Ø KCM THIN IN 3" CONDUIT.
- EXISTING MAIN DISTRIBUTION PANEL, " B"HALL, " SEE SCHEDULES ( 42, ØØ AMPS AIC 577M RATING) PROVIDE SERIES CONNECTION RATING BETWEEN MAIN BREAKERS, SUB-MAIN BREAKERS AND BRANCH CIRCUIT BREAKERS DOWNSIDE PER UL OR OTHER TESTING LABS, TESTING PROCEDURES
- EXISTING METER BY TECO PROVIDE 1 1/4" R3Ø CONDUIT, SURFACE MOUNTED ON BLDG NIPPLE TO C.T. CAN. GROUND METER CAN & C.T. CAN TO BUILDING SERVICE GROUND WITH #4 SOLID COPPER
- EXISTING LIGHTING SURGE ARRESTORS AND SURGE PROTECTORS, 8Ø KA PER PHASE, 5ØØV CLAMP VOLTAGE, SINGLE NIPPLE LINE TO GROUND, LINE TO NEUTRAL AND NEUTRAL TO GROUNDING RATING, CAPABLE OF PROTECTING AGAINST AND SURVIVING 2ØØ TRANSIENTS PER ANSI / IEEE CØ2.41 CATEGORY C, WITHOUT FAILURE OR DEGRADATION OF UL 1449 CLAMP VOLTAGE BY MORE THAN 1Ø%.
- EXISTING #3/Ø IN 3/4" C (R3Ø) MAIN BUILDING SERVICE GROUND WIRE. MAKE GROUND CONNECTION AS SHOWN FIELD COORDINATE EXACT LOCATION.
- EXISTING 3/4" 2Ø" 2Ø" LONG COPPER CLAD STEEL (SEE SPEC) GROUND RODS DRIVEN INTO GROUND AT 1Ø" Ø" (MIN) APART. MAKE GROUND CONNECTIONS TO MAIN BUILDING GROUND CONDUCTOR, AS SHOWN AND TO MAIN COLD WATER STEEL PIPE AND TO BUILDING STRUCTURAL REINFORCED RE-BARS.
- EXISTING POLE CONDUIT, 4 WIRING BY TECO.
- EXISTING (2) 3" Ø CONDUITS TO 3Ø" X 3Ø" X 8" UP PULL BOX ON OUTSIDE WALL.
- EXISTING HANDHOLE WITH TRAFFIC COVER FOR CONNECTION OF TECO WIRING TO CUSTOMER WIRING BY TECO. FINAL CONNECTIONS BY TECO.
- EXISTING 2" CONDUIT FOR LIGHTING CONTROL CONDUCTORS.
- EXISTING LIGHTING "ON OFF" SWITCHES AS SHOWN ON PLAN WITH 2#Ø THIN CONDUCTORS IN 3/4" CONDUIT PER SWITCH.
- EXISTING (4) 5ØØ KCM THIN CU 4 (1) 3" THIN IN 3" R3Ø CONDUIT NIPPLE COMPLETE WITH 1Ø" 1/4" R3Ø CONDUIT NIPPLE IN 3" R3Ø CONDUIT.
- EXISTING 2 SET (4) 5ØØ KCM THIN CU 1 (1) #1Ø THIN IN 3" R3Ø CONDUIT.
- EXISTING (4) 1ØØ VOLT 2Ø AMP CIRCUITS FROM EXISTING PANEL, (1) FOR CONTRACTOR CONTROLS, 4 (1) FOR EACH SCORE BOARD 2ØA GFCI UP REPLACABLE.