

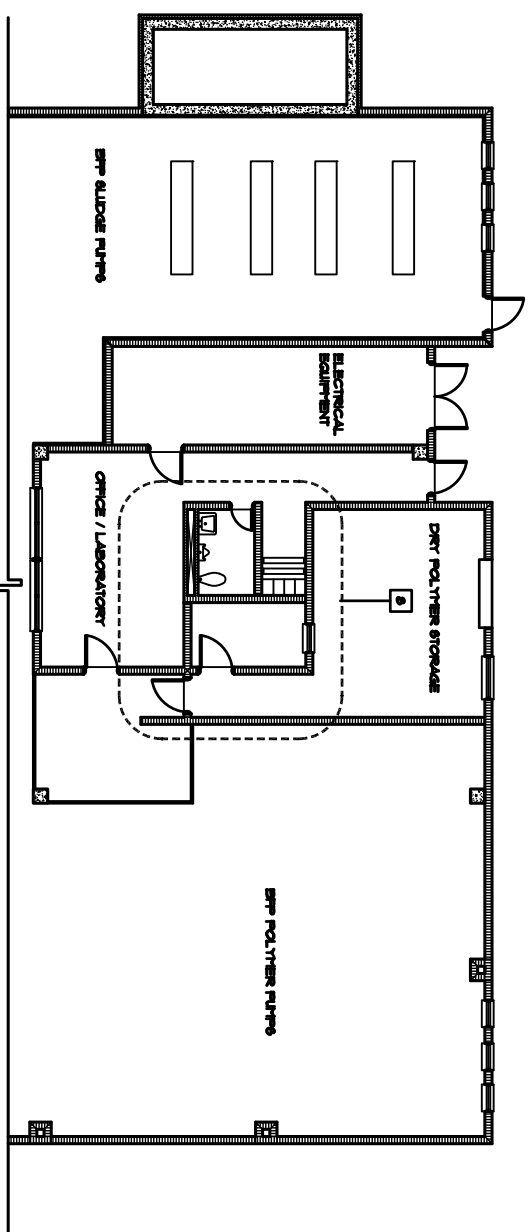
The Enclosed Document Is Provided For Your Convenience.

Please Email ALL Questions:

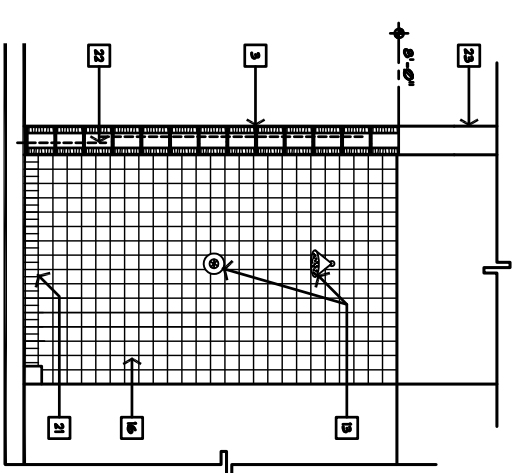
[MailTo:ContractAdministration@TampaGov.net](mailto:ContractAdministration@TampaGov.net)

Please Let Us Know If You Plan To Bid

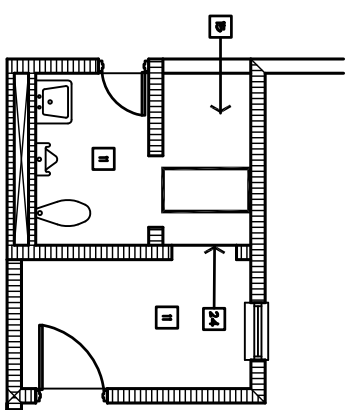
City of Tampa
Contract Administration Department
306 E. Jackson St. #280A4N
Tampa, FL 33602
(813)274-8456



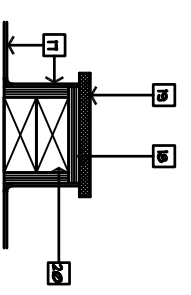
PARTIAL INFORMATION FLOOR PLAN (EAST HVAC AND BUILDING SPACE)
SCALE 1/4" = 1'-0"



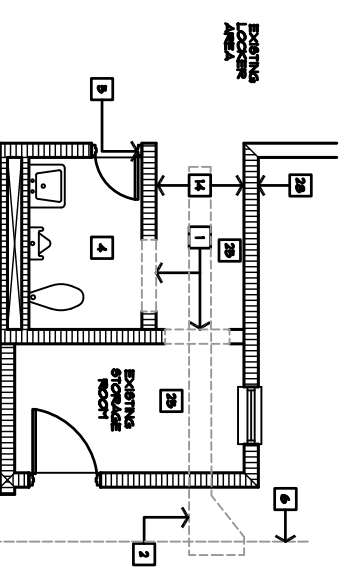
SHOWER ELEVATION
SCALE 1/4" = 1'-0"



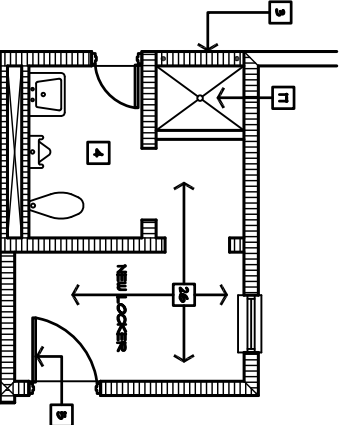
REFLECTED CEILING PLAN
SCALE 1/4" = 1'-0"



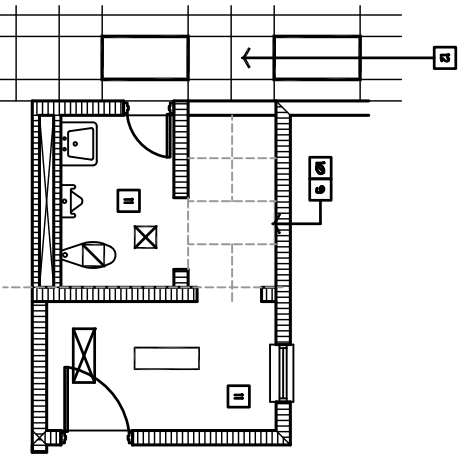
TYPICAL CURB DETAIL
SCALE 3" = 1'-0"



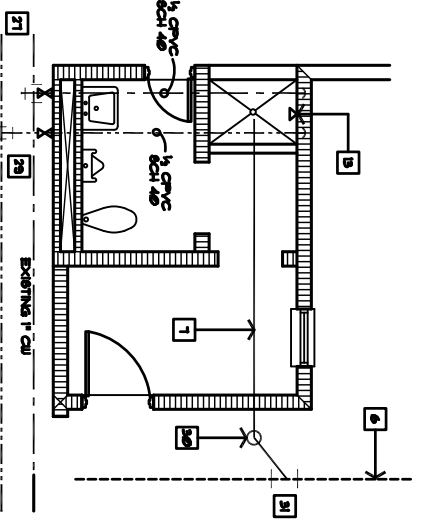
DEMO FLOOR PLAN
SCALE 1/4" = 1'-0"



NEW FLOOR PLAN
SCALE 1/4" = 1'-0"



DEMO REFLECTED CEILING PLAN
SCALE 1/4" = 1'-0"



PLUMBING FLOOR PLAN
SCALE 1/4" = 1'-0"

GENERAL NOTES

1. PAINT REQUIREMENTS FOR ALL WALLS AND SHOWER AREA CEILING.
- A. MASONRY BLOCK SHILLAR TO PORTER 899 ACRI - FULL ACRYLIC BLOCK FILTER.
- B. MASONRY WALLS - INTERIOR 899I GLO-96 COOR-899 ALTO-DI SWAHEL - SHILLAR TO PORTER 498 GL-TYPE SATIN SWAHEL WITH PORTER 498 UNDERCOAT AND FINISH PORTER 699 HI-HIDE FLAT.
- C. GYP-SUPL BOARD CEILING SHILLAR TO MASONRY PAINT REQUIREMENTS.
2. CALK AT CEILING TO WALL CONDITIONS WITH SILICON SEALANT SHILLAR TO BOORK-CHER - CALK 1599P OR EQUAL.

KEY NOTES

1. EXISTING WALL TO BE CUT.
2. CUT EXISTING FLOOR FOR PLUMBING.
3. NEW 8" CHU FILL WALL PAINT WALL SIDE.
4. EXISTING RESTROOM TO REMAIN.
5. EXISTING DOOR TO REMAIN.
6. EXISTING 4" WASTE LINE.
7. NEW 4" SCHEDULE 40 PVC WASTE LINE PATCH FLOOR OPENING WITH 4" 3000 PSI CONCRETE WITH FIBER FRESH.
8. AREA OF WORK.
9. EXISTING LIGHT TO BE RELOCATED SCHEDULED CEILING TO BE ADJUSTED REMOVED.
10. EXISTING 2x2 CEILING TILES TO BE REMOVED.
11. EXISTING CEILING TO REMAIN IN PLACE.
12. EXISTING LIGHT AND CEILING GRID AND TILE TO REMAIN.
13. SHOWER ASSEMBLY 211 2-11000 'TEMP - GUARD PRESSURE BALANCING SHOWER MIXING VALVE WITH WALL MOUNTED INTRONAL SHOWER HEAD, 1/2" R. BRNH 2899 - A SHOWER DRAIN 8" DIAMETER NICKEL BRONZE TOP, PROVIDE TRAP, SUPPLIES, STORES, ETC. FOR COMPLETE INSTALLATION.
14. EXISTING CHU WALLS TO BE CLEAN UP AND PREPARED FOR NEW WORK.
15. MORTURE RESISTANT 8x8' GYP. BOARD SCHEDULED ON HEAVY DUTY GRID RATED FOR INTERIOR APPLICATION BY USG INTERIOR OR EQUAL, 2" MIN. CARTRING CHANNELS 899I C-48 COMPOSED OF MAIN BEATS OR CROSS FIBERS FIBERS THAT INTERLOCK TO FORM A MODULAR SUPPORTING NETWORK.
16. PROVIDE CERAMIC WALL TILE 4 1/2" x 1 1/2" MODULAR SQUARE SHILLAR TO DAL-TILE OR EQUAL, COLOR AS SELECT FROM FULL RANGE OF STANDARD COLORS, PROVIDE SETTING MATERIALS AND GROUT FIBERS AND/ALIAS REQUIREMENTS, INSTALL ON THREE SIDES FULL HEIGHT.
17. PROVIDE 2" x 2" x 1/2" MOAIC FLOOR TILE SLIP RESISTANT, 12" x 21" MOUNTED SHEETS 2" x 2" 1/2" WALL BASE WITH COVE, COLOR AS SELECTED FROM FULL RANGE OF STANDARD COLORS, PROVIDE SETTING MATERIALS SEE NOTE 16.
18. 1/2" CRT. BD. - 899I TO DIMOROCK.
19. 1/2" x 8" WIDE TRAVERTINE SILL.
20. P.T. DOUBLE 3/4 CONTINUOUS SILL.
21. 2" x 2" MOAIC TILE BASE.
22. PROVIDE 8" DOUBL. 36" N LENGTH WITH ETCHED INTO SLABS 2" SET IN FRONT PROVIDE 1"8 VERTICAL TO URTHIN 1" COURSE OF TOP OF WALL.
23. EXISTING HEADER TO REMAIN ALIGN WALL WITH HEADER.
24. NEW CEILING TO EXISTING CEILING PROVIDE J BEAD.
25. EXISTING VCT TO BE REMOVED.
26. NEW 2x8" VNTL. COMPOSITION TILE SHILLAR TO AIRSTRONS OR EQUAL, PROVIDE WATER RESISTANT ADHESIVE OR EQUAL, COLOR SELECTED FROM STANDARD RANG OF COLORS.
27. EXISTING WATER HEATER ABOVE CEILING CONTRACTOR TO LOCATE THE IN SHOWER COMPONENTS AND WATER LINEA.
28. CUT CHU FACE SHELL TO FACILITATE SHOWER COMPONENTS AND WATER LINEA.
29. PROVIDE COPPER TO CPVC TRANSITION COMPONENTS AND GATE VALVE.
30. FLOOR CLEAN OUT SIZED TO MATCH EXISTING DRAIN WITH BRASS COVER FLATE.
31. CUT EXISTING WASTE LINE, PROVIDE GALVANIZED PIPE TO PVC TRANSITION COMPONENTS.



CITY OF TAMPA
ENGINEERING DEPARTMENT
PLANNING AND DESIGN DIVISION
201 S. HAYDEN STREET, 4TH FLOOR
TAMPA, FLORIDA 33602
TEL: 813.258.1100 FAX: 813.258.1100
WWW.CITYOFTAMPA.COM

John S. Johnson, P. E., M.ASCE
Chief Engineer
Robert D. Day, M.ASCE
Assistant Chief Engineer
Michael J. Hines, M.ASCE
Assistant Chief Engineer
Thomas A. Hines, P. E., M.ASCE
Assistant Chief Engineer
Gregory C. Hines
Assistant Chief Engineer
John K. Hines, M.ASCE
Assistant Chief Engineer
John K. Hines, M.ASCE
Assistant Chief Engineer

MAP CONSULTANT

STRUCTURAL CONSULTANT

CHIL CONSULTANT

LANDSCAPE CONSULTANT

DI WATER TREATMENT PLANT
DESIGNER: BILLY ANDERSON ASSOCIATES
TAMPA, FLORIDA

FILE NUMBER

PROJECT NUMBER

DATE DATE

DESIGNED BY

DRAWN BY

REVISIONS

PROFESSIONAL SEAL

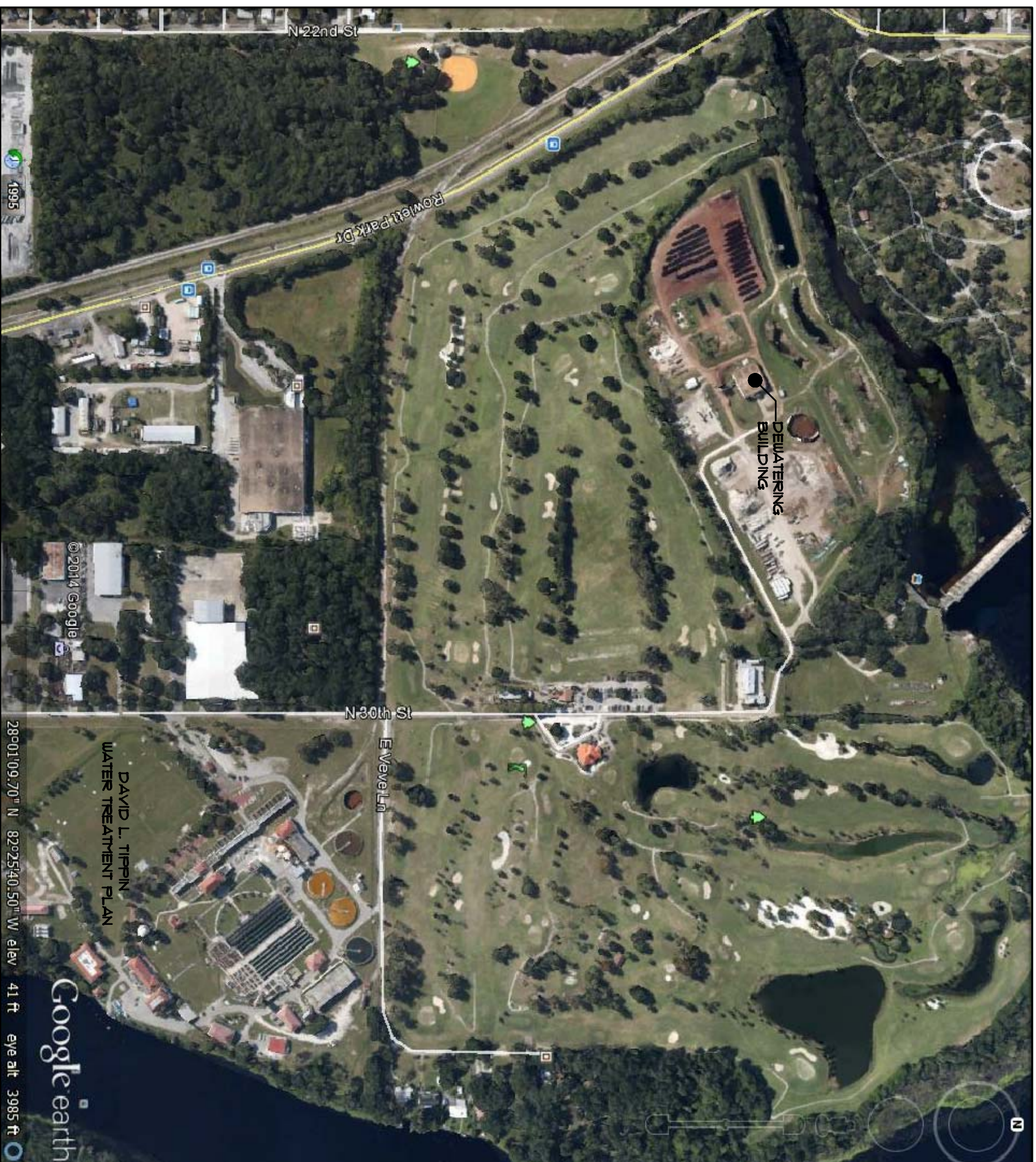
SCALE 1/4" = 1'-0"

SHEET NUMBER

A 21

1 OF 1





SITE PLAN
SCALE NTS

GENERAL NOTES



CITY OF TAMPA
COMMUNITY DEVELOPMENT
PLANNING AND DESIGN DIVISION
201 S. HOBSON STREET, 4TH FLOOR
TAMPA, FLORIDA 33602
TEL: 813.254.5000
WWW.CITYOFTAMPA.COM

KEY NOTES

John S. Johnson, Sr. AIA, NCMA
City Architect
Robert D. Bell, AIA
Project Architect
John F. Williams, AIA
Design Architect
Thomas A. Harris, Sr. AIA, NCMA
Project Architect
Darryl C. Thomas
Lead Landscape Architect
Dennis E. Thompson, LSAP CA
Landscape Architect

MAP CONSULTANT

STRUCTURAL CONSULTANT

CIVIL CONSULTANT

LANDSCAPE CONSULTANT

DT WATER TREATMENT PLANT
DESIGNED BY DAVID L. TIPPIN
TAMPA, FLORIDA

FILE NUMBER
X

PROJECT NUMBER
98-0-00078

DATE
DECEMBER 9, 2014

DRAWN BY
JENNIFER P. SANDERS

REVISIONS

△
△
△

PROFESSIONAL SEAL
X

SCALE
1"=1'-0"

SHEET NUMBER

A 11

1 OF 3

