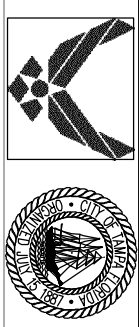


This document, together with the concepts and designs presented herein, as an instrument of service, is intended only for the specific purpose and client for which it was prepared. Reuse of and improper reliance on this document without written authorization and adaptation by Kimley-Horn and Associates, Inc. shall be without liability to Kimley-Horn and Associates, Inc.

No.	REVISIONS	DATE	BY



SCALE AS NOTED  
 DESIGNED BY: WJM  
 DRAWN BY: WJM  
 CHECKED BY:

**Murphy LaRocca Consulting Group, Inc.**  
 Kimley-Horn and Associates, Inc.  
 10117 Phoenicia Avenue, Suite 300, Tampa, FL 33610  
 PHONE: WWW.KIMLEY-HORN.COM CA 00080989

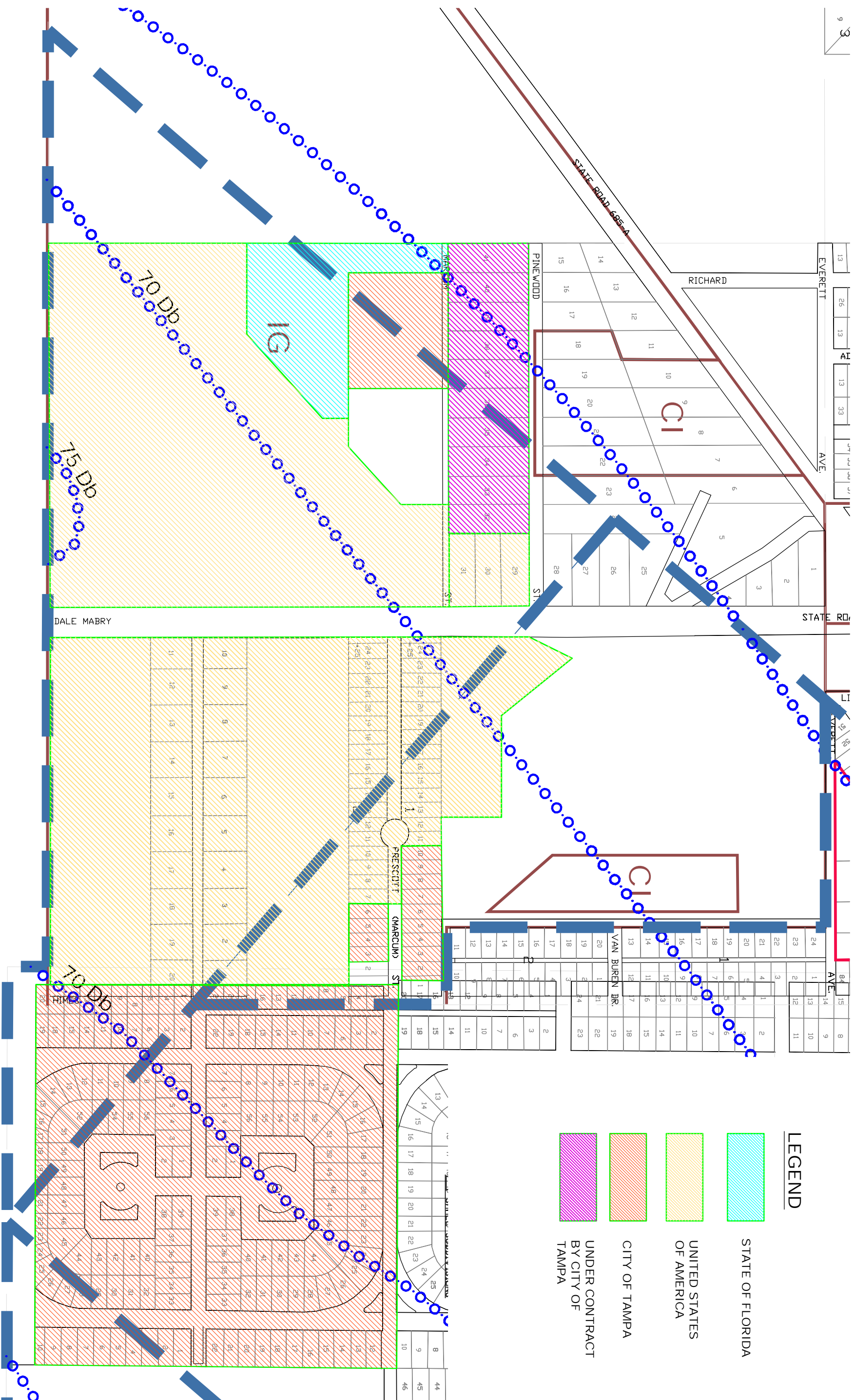
DATE: JUNE 16, 2006  
 PROJECT NO.: 048769005

**CITY OF TAMPA**  
**MACDILL AFB/CITY OF TAMPA**  
**JOINT LAND USE STUDY**  
 FLORIDA  
 HILLSBOROUGH

DESIGN ENGINEER:  
 William J. Mather  
 FLORIDA REGISTRATION NUMBER:  
 62846

**GOV'T OWNED PROPERTY**  
**NEAR CLEAR ZONE**  
**EXHIBIT 4-4**

SHEET NUMBER



**LEGEND**

[Light Blue Hatched Box]	STATE OF FLORIDA
[Yellow Hatched Box]	UNITED STATES OF AMERICA
[Light Orange Hatched Box]	CITY OF TAMPA
[Purple Hatched Box]	UNDER CONTRACT BY CITY OF TAMPA

