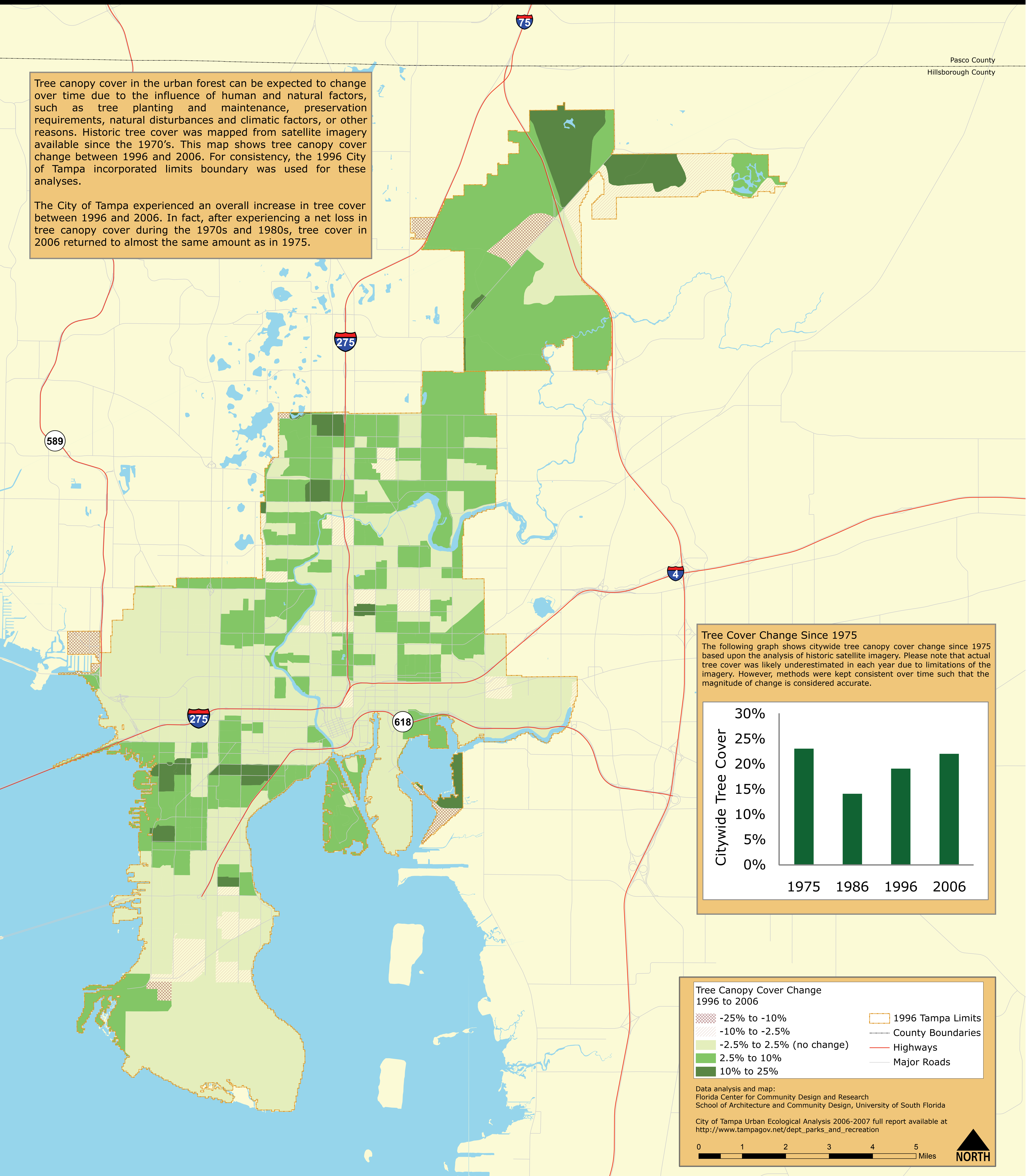


City of Tampa Historic Tree Canopy Change

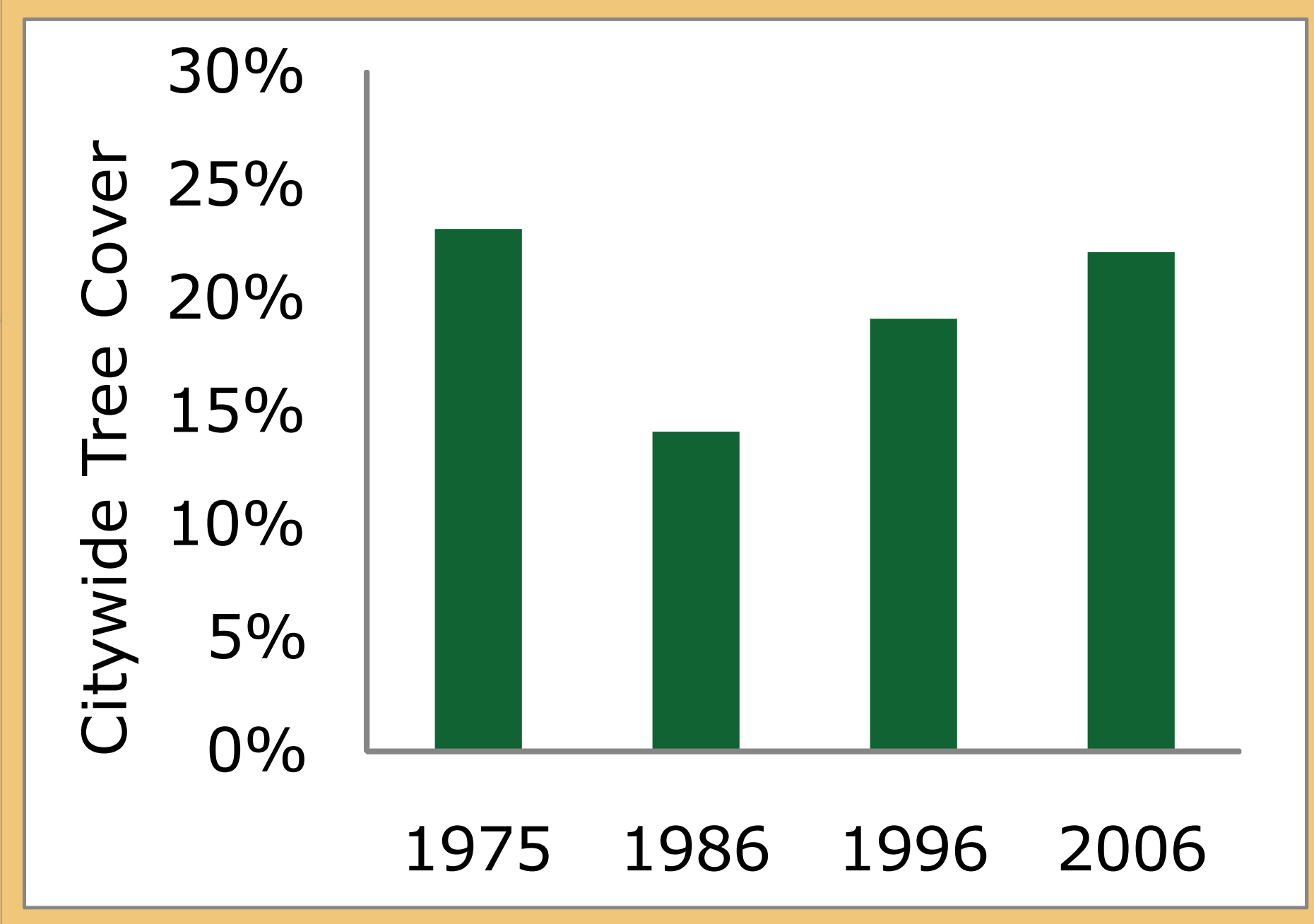
Pasco County
Hillsborough County

Tree canopy cover in the urban forest can be expected to change over time due to the influence of human and natural factors, such as tree planting and maintenance, preservation requirements, natural disturbances and climatic factors, or other reasons. Historic tree cover was mapped from satellite imagery available since the 1970's. This map shows tree canopy cover change between 1996 and 2006. For consistency, the 1996 City of Tampa incorporated limits boundary was used for these analyses.

The City of Tampa experienced an overall increase in tree cover between 1996 and 2006. In fact, after experiencing a net loss in tree canopy cover during the 1970s and 1980s, tree cover in 2006 returned to almost the same amount as in 1975.



Tree Cover Change Since 1975
The following graph shows citywide tree canopy cover change since 1975 based upon the analysis of historic satellite imagery. Please note that actual tree cover was likely underestimated in each year due to limitations of the imagery. However, methods were kept consistent over time such that the magnitude of change is considered accurate.



Tree Canopy Cover Change 1996 to 2006

- 25% to -10%
- 10% to -2.5%
- 2.5% to 2.5% (no change)
- 2.5% to 10%
- 10% to 25%
- 1996 Tampa Limits
- County Boundaries
- Highways
- Major Roads

Data analysis and map:
Florida Center for Community Design and Research
School of Architecture and Community Design, University of South Florida

City of Tampa Urban Ecological Analysis 2006-2007 full report available at http://www.tampagov.net/dept_parks_and_recreation

