

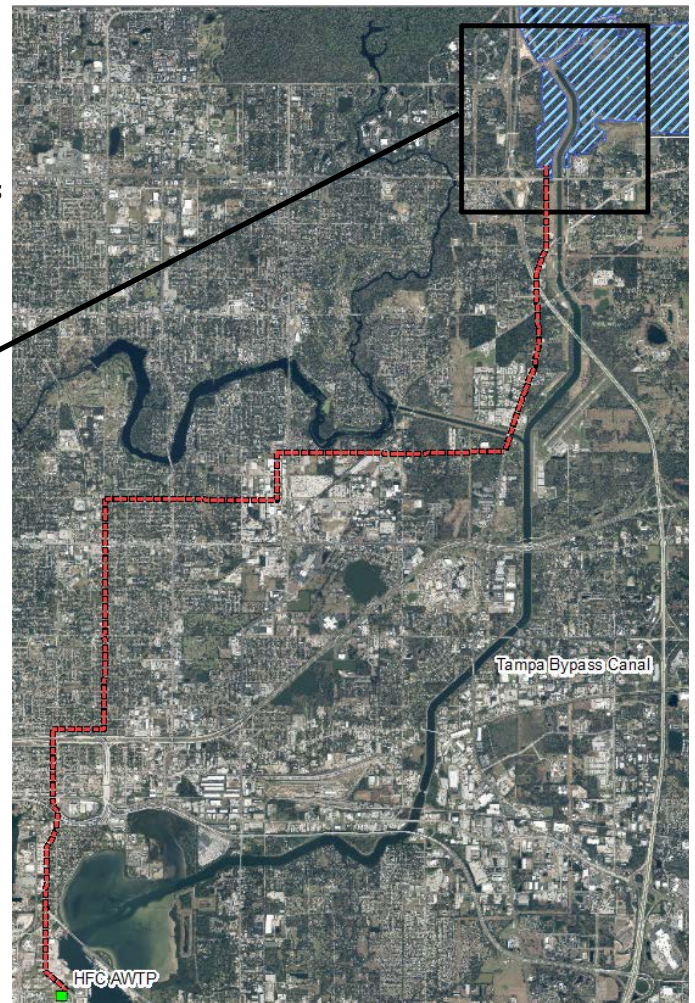
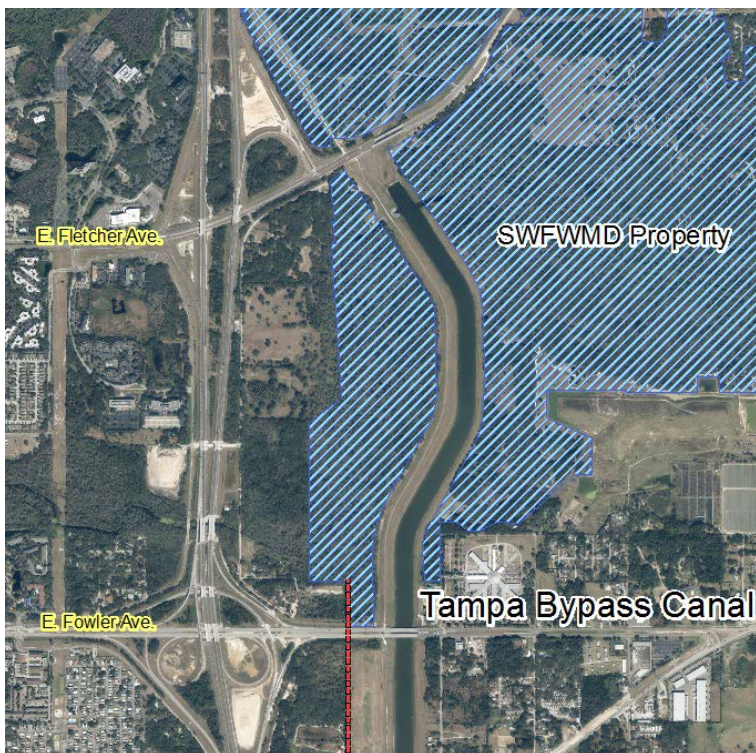
Tampa Augmentation Project

Fact Sheet – June 17, 2015

- **Project Concept:** Reclaimed water from Howard F. Curren Advanced Wastewater Treatment Plant (HFCAWTP) is delivered to Rapid Infiltration Basins (RIBs) and wetlands located adjacent to Tampa Bypass Canal (TBC) for improving groundwater and surface water levels which in turn will increase recharge to the TBC. This will allow additional surface water withdrawal from the TBC by City of Tampa or Tampa Bay Water.
- **Capital Investment Needed:** Storage and Pumping at HFCAWTP, Pipeline, RIBs, and Wetlands
- **Planning Level Cost Estimate:** \$260 Million (20 mgd)
- **Opportunities:**
 - No further treatment of reclaimed water required
 - Significant use of environmental buffer
 - Public acceptance and support
 - SWFWMD Cooperative Funding
- **Challenges:**
 - Water Use Permit modifications may be needed
 - Nutrient loading
- **Regulatory Agencies/Permitting Requirements:**
 - Florida Department of Environmental Protection
 - Southwest Florida Water Management District
 - Hillsborough County Environmental Protection Commission
 - US Army Corps of Engineers
- **Next Steps:**
 - Implementation Program
 - Hydraulic Analysis and Pipeline Route Study
 - Evaluation of future phase for additional water demand – up to 35-40 mgd
 - Partnership with Tampa Bay Water
 - Potential Lower Hillsborough River Minimum Flows Recovery Strategy Modifications

Planning Level Cost Estimate Breakdown

Implementation Program	\$3M
Storage and Pump Station	\$25M
Pipeline	\$120M
RIBs/Wetlands	\$60M
Subtotal	\$208M
Engineering (10%)	\$21M
Contingency (15%)	\$31M
Total	\$260M



Wetlands & Southwest Florida Water Management District Property

