



Upper Peninsula Flooding Relief (Dale Mabry Trunkline) City Project #: 1001017

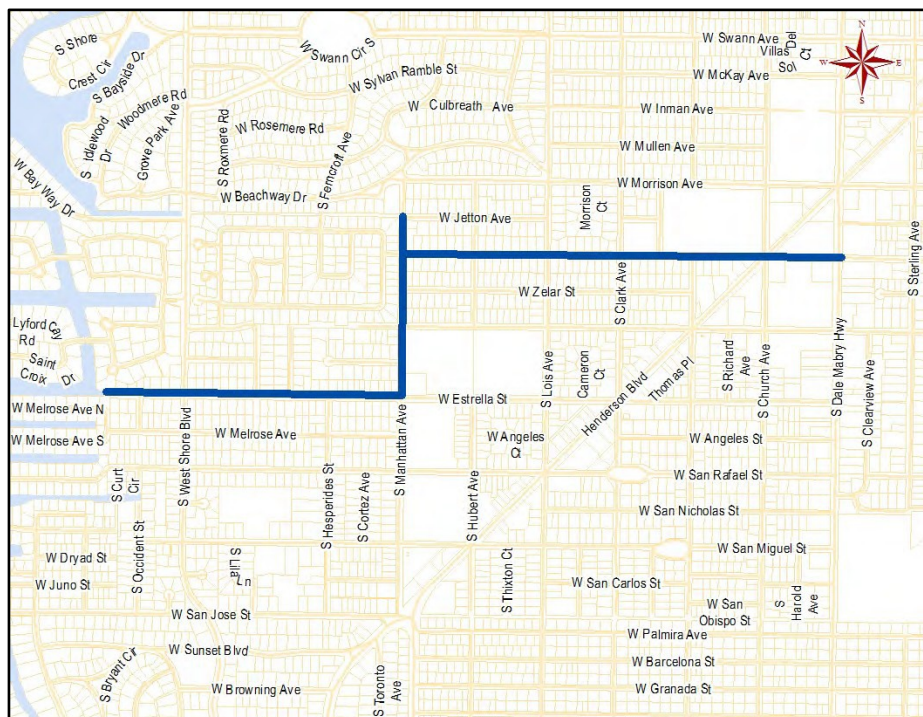
Project Description:

Upper Peninsula Regional Stormwater Improvements is a multi-year flood relief project covering approximately 3400 acres of South Tampa from Kennedy Boulevard southward to Euclid Avenue. Stormwater Engineering Division has developed a stormwater model and comprehensive study of the project area, with the goal of providing incremental improvements to the stormwater infrastructure. The main benefit of the project is to provide targeted relief in flood prone areas to address public safety.

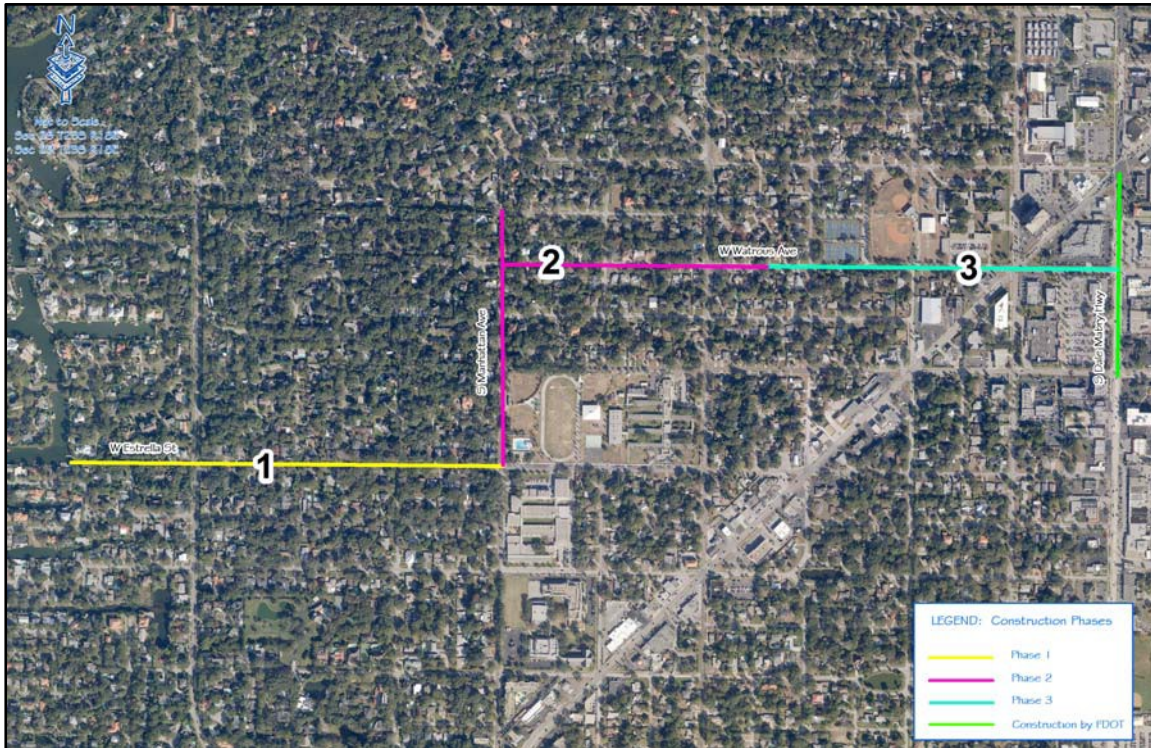
This project will alleviate the severe chronic flooding along Dale Mabry Highway between Henderson Blvd and Neptune Street. The highway is part of the primary evacuation route for South Tampa. Existing pipes will be connected to the trunkline thereby providing basin wide flooding relief.

Dale Mabry Trunkline project consists of the construction of a box culvert from Dale Mabry/Henderson/Neptune to a new outfall at Estrella Street. The system will also interconnect to improvements along the Watrous Canal, thus providing two outfalls for flooding relief.

Location Map:



Dale Mabry Trunkline Project Phases:



Summary of Project Costs:

Phase	Firm	Amount	Funding Source	Schedule	
				Start	Finish
Design/Build	Kimmins selected	\$37M	COT/SWFWMD	FY17	FY20

Timeline:

- Survey field work has been completed
- Geotechnical investigation has been completed
- Hydrologic/hydraulic modeling is 50% complete
- Formal tree assessment to commence on Oct. 20