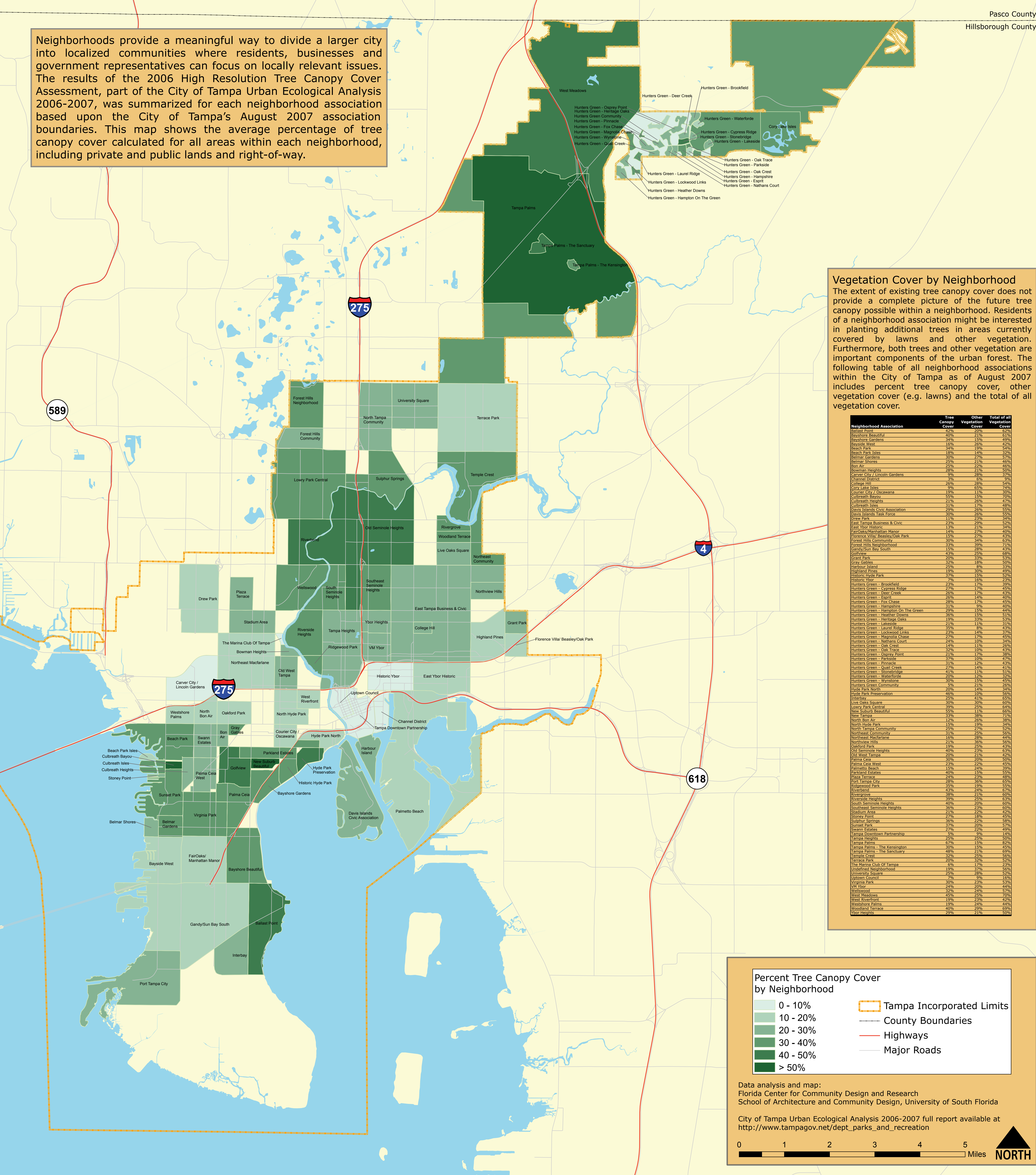


2006 City of Tampa Tree Canopy Cover Summarized by Neighborhood Association

Neighborhoods provide a meaningful way to divide a larger city into localized communities where residents, businesses and government representatives can focus on locally relevant issues. The results of the 2006 High Resolution Tree Canopy Cover Assessment, part of the City of Tampa Urban Ecological Analysis 2006-2007, was summarized for each neighborhood association based upon the City of Tampa's August 2007 association boundaries. This map shows the average percentage of tree canopy cover calculated for all areas within each neighborhood, including private and public lands and right-of-way.

Pasco County
Hillsborough County



Vegetation Cover by Neighborhood
The extent of existing tree canopy cover does not provide a complete picture of the future tree canopy possible within a neighborhood. Residents of a neighborhood association might be interested in planting additional trees in areas currently covered by lawns and other vegetation. Furthermore, both trees and other vegetation are important components of the urban forest. The following table of all neighborhood associations within the City of Tampa as of August 2007 includes percent tree canopy cover, other vegetation cover (e.g. lawns) and the total of all vegetation cover.

Neighborhood Association	Tree Canopy Cover	Other Vegetation Cover	Total of all Vegetation Cover
Ballast Point	42%	20%	62%
Bayshore Beautiful	40%	15%	55%
Bayshore Gardens	34%	15%	49%
Bayshore West	16%	30%	46%
Beach Park	34%	19%	54%
Beach Park Isles	18%	14%	32%
Belmar Gardens	30%	7%	37%
Belmar Shores	25%	21%	46%
Bon Air	25%	21%	46%
Bowman Heights	28%	21%	50%
Carver City / Lincoln Gardens	9%	28%	37%
Channel District	3%	6%	9%
College Hill	26%	28%	54%
Cory Lake Isles	9%	65%	74%
Courier City / Oscawana	19%	11%	30%
Culbreth Bayou	55%	15%	70%
Culbreth Bayou	21%	26%	47%
Culbreth Isles	31%	17%	48%
Davis Islands Civic Association	29%	26%	55%
Davis Islands Task Force	30%	26%	56%
Drew Park	11%	23%	34%
East Tampa Business & Civic	13%	21%	34%
East Ybor Historic	13%	21%	34%
Fair Oaks/Manhattan Manor	14%	27%	40%
Florence Villa / Beasley/Oak Park	15%	27%	42%
Forest Hills Neighborhood	30%	34%	63%
Forest Hills Community	33%	29%	62%
Gandy/Sun Bay South	15%	28%	43%
College Hill	42%	29%	71%
Grant Park	20%	33%	53%
Gray Gables	32%	18%	50%
Harbour Island	25%	8%	33%
Highland Pines	19%	30%	49%
Historic Hyde Park	37%	15%	52%
Historic Ybor	7%	16%	23%
Hunters Green - Brookfield	23%	17%	40%
Hunters Green - Deer Creek	26%	17%	43%
Hunters Green - Spirit	14%	14%	28%
Hunters Green - Fox Chase	28%	17%	45%
Hunters Green - Hampshire	31%	19%	50%
Hunters Green - Hampton On The Green	29%	15%	44%
Hunters Green - Heather Downs	36%	15%	51%
Hunters Green - Heritage Oaks	19%	33%	53%
Hunters Green - Lakeside	21%	11%	32%
Hunters Green - Laurel Ridge	30%	8%	38%
Hunters Green - Lockwood Links	27%	14%	41%
Hunters Green - Parkside	11%	10%	21%
Hunters Green - Pinnacle	31%	12%	43%
Hunters Green - Quiet Creek	27%	14%	41%
Hunters Green - Stonebridge	41%	11%	52%
Hunters Green - Waterford	20%	12%	32%
Hunters Green - Wynstone	30%	15%	45%
Hunters Green Community	5%	23%	28%
Hyde Park North	20%	14%	34%
Hyde Park Preservation	46%	10%	56%
Interbay	25%	41%	66%
Live Oaks Square	30%	30%	60%
Lovely Park Central	39%	25%	64%
New Suburb Beautiful	55%	11%	66%
New Tampa	33%	38%	71%
North Bon Air	12%	26%	38%
North Hyde Park	15%	27%	42%
North Tampa Community	15%	27%	42%
Northwest Community	31%	25%	56%
Northwest MacLachlan	18%	28%	46%
Northview Hills	21%	36%	56%
Oakford Park	19%	25%	43%
Old Seminole Heights	40%	23%	63%
Old West Tampa	20%	21%	41%
Palma Lea	30%	20%	50%
Palma Lea West	23%	22%	45%
Parkland Estates	15%	24%	39%
Parkland Estates	40%	15%	55%
Plaza Terrace	24%	23%	47%
Port Tampa City	28%	36%	64%
Ridgecroft Park	35%	19%	54%
Riverbend	43%	24%	67%
Rivergrove	38%	21%	59%
Riverside Heights	39%	21%	60%
South Seminole Heights	40%	20%	60%
Southwest Seminole Heights	36%	23%	59%
Stadium Area	21%	24%	45%
Stony Point	27%	18%	45%
Sulphur Springs	36%	22%	58%
Sunset Park	37%	20%	57%
Swann Estates	27%	22%	49%
Tampa Downtown Partnership	5%	9%	14%
Tampa Heights	25%	25%	50%
Tampa Palms	67%	15%	82%
Tampa Palms - The Kensington	30%	25%	55%
Tampa Palms - The Sanctuary	48%	21%	69%
Temple Crest	23%	25%	48%
Terrace Park	20%	32%	52%
The Marina Club of Tampa	6%	17%	23%
Undeveloped Neighborhood	19%	7%	26%
University Square	25%	28%	53%
Uptown Council	7%	9%	16%
Virginia Park	30%	23%	53%
VM Ybor	24%	28%	52%
Wellwood	32%	24%	56%
West Meadows	25%	25%	50%
West Riverfront	19%	23%	42%
Westshore Palms	19%	24%	44%
Woodland Terrace	40%	22%	62%
Ybor Heights	29%	21%	50%

Percent Tree Canopy Cover by Neighborhood

- 0 - 10%
- 10 - 20%
- 20 - 30%
- 30 - 40%
- 40 - 50%
- > 50%

- Tampa Incorporated Limits
- County Boundaries
- Highways
- Major Roads

Data analysis and map:
Florida Center for Community Design and Research
School of Architecture and Community Design, University of South Florida

City of Tampa Urban Ecological Analysis 2006-2007 full report available at http://www.tampagov.net/dept_parks_and_recreation

0 1 2 3 4 5 Miles **NORTH**